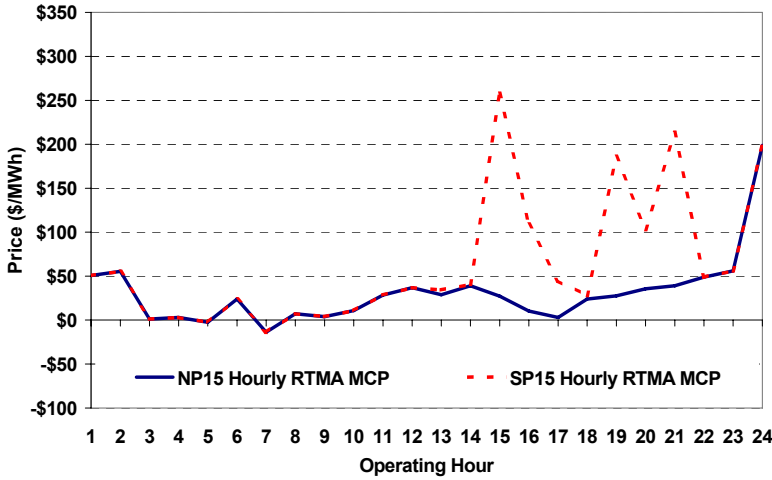
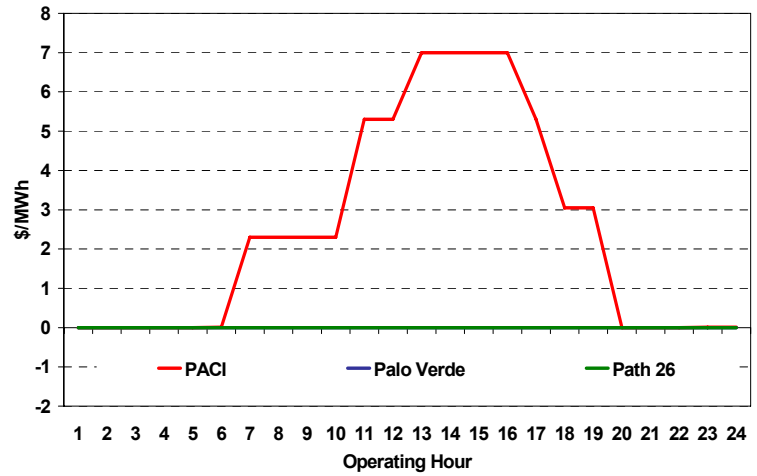


The content of this page is subject to change without notice. Decisions based on information contained herein are the visitor's responsibility.

Real-Time Hourly Average MCP



Selected Day Ahead Branch Group Congestion Prices



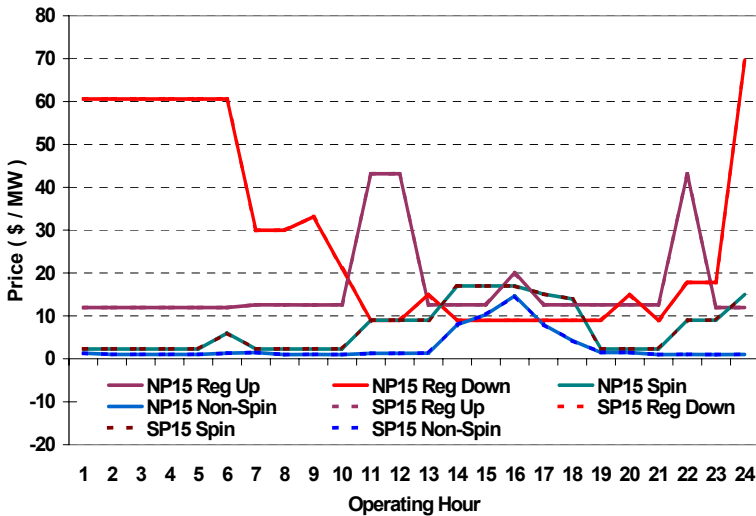
	NP15				SP15			
	Min	Max	Avg	Δ Avg.	Min	Max	Avg	Δ Avg.
RTMA MCP								
Peak	\$ (29.95)	\$ 75.00	\$ 24.35	\$ 1.78	\$ (29.95)	\$ 399.00	\$ 61.08	\$ 37.58
Off-Peak	\$ (29.95)	\$ 399.00	\$ 40.07	\$ 24.90	\$ (29.95)	\$ 399.00	\$ 40.07	\$ 24.90

Day-Ahead Inter-Zonal Congestion Market: 12-Jun, 2006

Branch Group	Congestion Cost		Total	Total Cost Percent
	Import	Export		
PACI	\$ 76,365	\$ -	\$ 76,365	100%

Branch Group	Percentage of Hours Being Congested (%)		Avg. Cong. Price (\$/MWh)	
	Import	Export	Import	Export
PACI	67	0	4	

Day Ahead A/S Market Clearing Prices



Intrazonal Congestion: Out-of-Sequence Redispatch Costs

	Inc MWh	Inc Redispatch Costs	Dec MWh	Dec Redispatch Costs
Peak	0	0	-50	514
Off-Peak	308	0	-200	0
Total	308	\$ -	-250	\$ 514

Loads:

Peak Load	31,932 MW	Average Load	27479 MW
Time of peak	14:37	Δ Peak from Prev. Day	3,096 MW

Day Ahead (DA) Market Summary: Ancillary Services (A/S) Capacity	Peak				Off-Peak			
	Min	Max	Avg.	Δ Avg.	Min	Max	Avg.	Δ Avg.
Regulation Up Price (\$/MW)	12.55	43.13	18.79	5.42	11.97	11.97	11.97	0.00
Regulation Down Price (\$/MW)	8.99	33.13	15.19	4.43	17.82	69.69	56.37	-7.69
Spinning Reserve Price (\$/MW)	2.31	17.00	8.27	-0.18	2.31	15.00	5.19	2.88
Non-Spinning Reserve Price (\$/MW)	0.99	14.70	3.67	2.45	1.00	1.33	1.09	-0.18
Regulation Up Bid Sufficiency Ratio*	79%	195%	130%	-42%	85%	196%	145%	-42%
Regulation Down Bid Sufficiency Ratio*	140%	290%	228%	-38%	96%	206%	111%	3%
Spinning Reserve Bid Sufficiency Ratio*	105%	182%	138%	-3%	134%	212%	187%	-24%
Non-Spinning Reserve Bid Sufficiency Ratio*	94%	194%	144%	-22%	151%	241%	221%	-20%
Total Cost of DA A/S (\$)			568,710	87,360				

* The Bid Sufficiency Ratio for a given market in a given hour is defined as the sum of capacity offers in MWs divided by the capacity requirement in MWs.