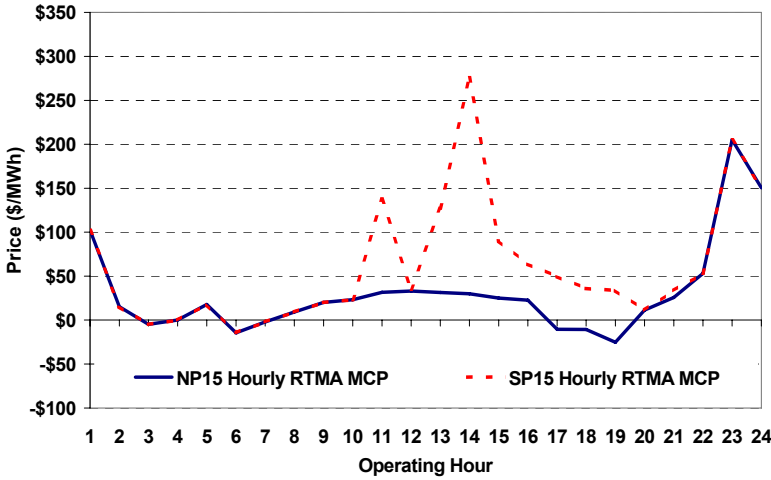
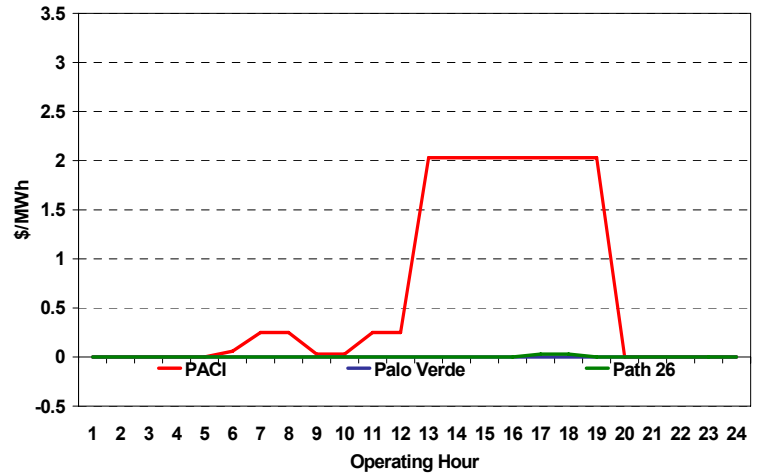


The content of this page is subject to change without notice. Decisions based on information contained herein are the visitor's responsibility.

### Real-Time Hourly Average MCP



### Selected Day Ahead Branch Group Congestion Prices



	NP15				SP15			
	Min	Max	Avg	Δ Avg.	Min	Max	Avg	Δ Avg.
<b>RTMA MCP</b>								
<b>Peak</b>	\$ (29.95)	\$ 230.00	\$ 18.19	\$ (6.16)	\$ (29.95)	\$ 399.00	\$ 52.83	\$ (8.25)
<b>Off-Peak</b>	\$ (29.95)	\$ 399.00	\$ 41.20	\$ 1.13	\$ (29.95)	\$ 399.00	\$ 41.20	\$ 1.13

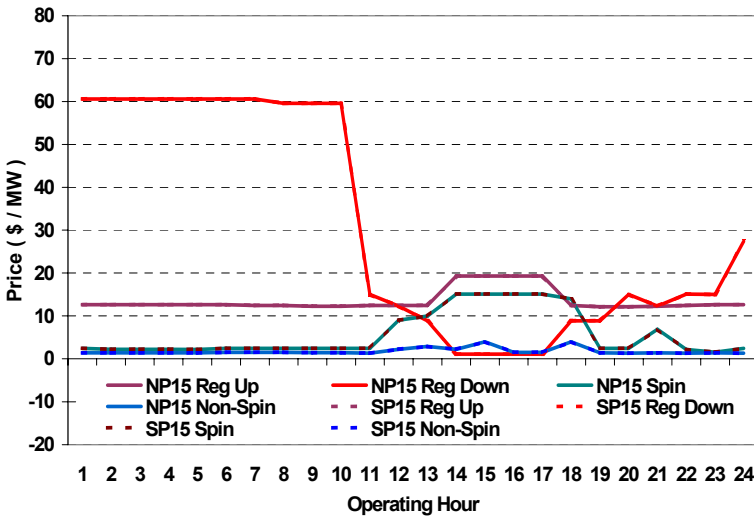
### Day-Ahead Inter-Zonal Congestion Market: 13-Jun, 2006

Branch Group	Congestion Cost		Total	Total Cost Percent
	Import	Export		
PACI	\$ 19,761	\$ -	\$ 19,761	78%
Path 26	\$ -	\$ 208	\$ 208	1%

Branch Group	Percentage of Hours Being Congested (%)		Avg. Cong. Price (\$/MWh)	
	Import	Export	Import	Export
PACI	58	0	1	
Path 26	0	8		0

### Day Ahead A/S Market Clearing Prices



### Intrazonal Congestion: Out-of-Sequence Redispatch Costs

	Inc MWh	Inc Redispatch Costs	Dec MWh	Dec Redispatch Costs
<b>Peak</b>	103	0	0	0
<b>Off-Peak</b>	0	0	0	0
<b>Total</b>	103	\$ -	0	\$ -

### Loads:

Peak Load	32,349 MW	Average Load	27912 MW
Time of peak	14:51	Δ Peak from Prev. Day	417 MW

Day Ahead (DA) Market Summary:	Peak				Off-Peak			
	Min	Max	Avg.	Δ Avg.	Min	Max	Avg.	Δ Avg.
<b>Ancillary Services (A/S) Capacity</b>								
Regulation Up Price (\$/MW)	12.13	19.29	14.10	-4.69	12.64	12.64	12.64	0.67
Regulation Down Price (\$/MW)	1.10	60.58	21.25	6.06	15.00	60.58	50.74	-5.63
Spinning Reserve Price (\$/MW)	2.22	15.13	7.49	-0.78	1.58	2.47	2.25	-2.95
Non-Spinning Reserve Price (\$/MW)	1.31	3.99	1.94	-1.73	1.32	1.52	1.39	0.30
Regulation Up Bid Sufficiency Ratio*	108%	223%	161%	32%	148%	157%	151%	6%
Regulation Down Bid Sufficiency Ratio*	143%	321%	247%	20%	94%	96%	95%	-16%
Spinning Reserve Bid Sufficiency Ratio*	103%	204%	145%	7%	204%	236%	224%	37%
Non-Spinning Reserve Bid Sufficiency Ratio*	118%	226%	159%	15%	226%	241%	237%	16%
<b>Total Cost of DA A/S (\$)</b>			<b>524,576</b>	<b>-44,134</b>				

\* The Bid Sufficiency Ratio for a given market in a given hour is defined as the sum of capacity offers in MWs divided by the capacity requirement in MWs.