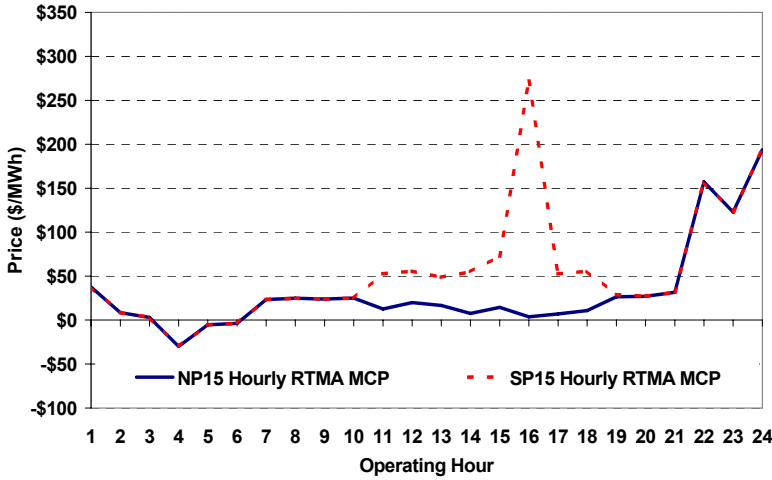
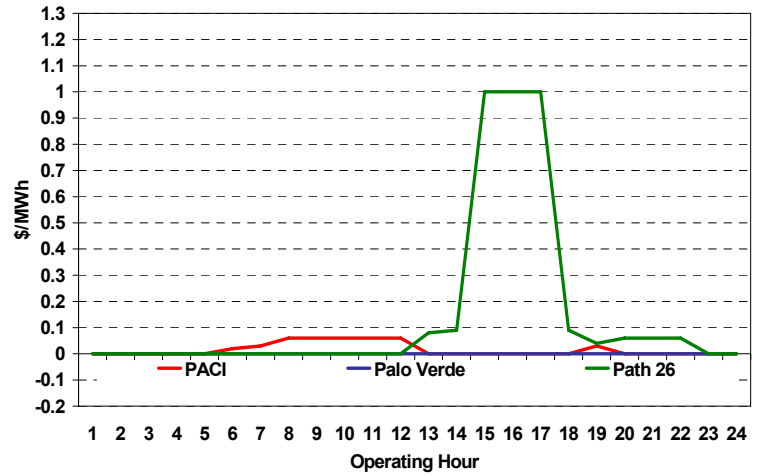


Real-Time Hourly Average MCP



Selected Day Ahead Branch Group Congestion Prices



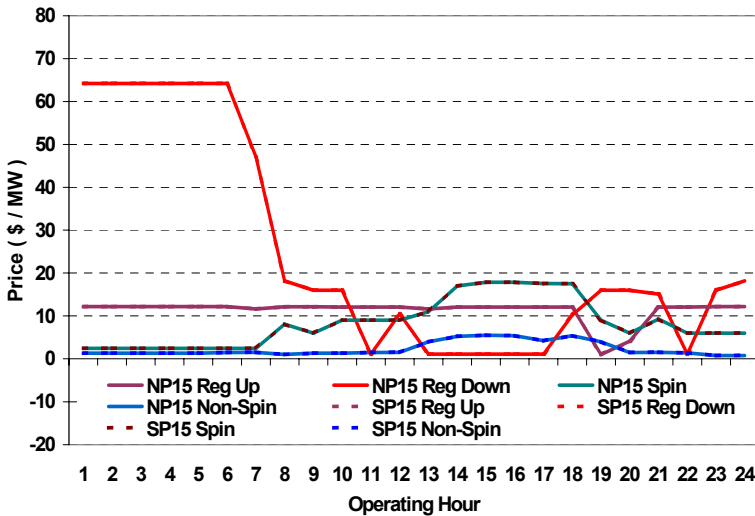
	NP15				SP15			
	Min	Max	Avg	Δ Avg.	Min	Max	Avg	Δ Avg.
RTMA MCP								
Peak	\$(29.95)	\$399.00	\$26.37	\$8.18	\$(29.95)	\$399.00	\$59.38	\$6.55
Off-Peak	\$(29.95)	\$399.00	\$30.24	\$(10.96)	\$(29.95)	\$399.00	\$30.24	\$(10.96)

Day-Ahead Inter-Zonal Congestion Market: 14-Jun, 2006

Branch Group	Congestion Cost		Total	Total Cost Percent
	Import	Export		
PACI	\$ 490	\$ -	\$ 490	4%
Path 26	\$ -	\$ 12,100	\$ 12,100	88%

Branch Group	Percentage of Hours Being Congested (%)		Avg. Cong. Price (\$/MWh)	
	Import	Export	Import	Export
PACI	33	0	0	
Path 26	0	42		0

Day Ahead A/S Market Clearing Prices



Intrazonal Congestion: Out-of-Sequence Redispatch Costs

	Inc MWh	Inc Redispatch Costs	Dec MWh	Dec Redispatch Costs
Peak	0	0	0	0
Off-Peak	0	0	0	0
Total	0	\$ -	0	\$ -

Loads:

Peak Load	33,707 MW	Average Load	28319 MW
Time of peak	15:28	Δ Peak from Prev. Day	1,358 MW

Day Ahead (DA) Market Summary:	Peak				Off-Peak			
	Min	Max	Avg.	Δ Avg.	Min	Max	Avg.	Δ Avg.
Ancillary Services (A/S) Capacity								
Regulation Up Price (\$/MW)	1.00	12.13	10.84	-3.26	12.17	12.17	12.17	-0.47
Regulation Down Price (\$/MW)	1.11	47.13	10.81	-10.45	15.99	64.23	52.45	1.70
Spinning Reserve Price (\$/MW)	2.44	17.85	10.79	3.29	2.44	6.00	3.33	1.09
Non-Spinning Reserve Price (\$/MW)	1.02	5.49	2.90	0.96	0.80	1.49	1.21	-0.18
Regulation Up Bid Sufficiency Ratio*	111%	184%	138%	-23%	46%	150%	124%	-27%
Regulation Down Bid Sufficiency Ratio*	159%	328%	297%	49%	85%	220%	125%	30%
Spinning Reserve Bid Sufficiency Ratio*	91%	186%	121%	-24%	134%	225%	200%	-24%
Non-Spinning Reserve Bid Sufficiency Ratio*	103%	195%	126%	-33%	138%	241%	214%	-23%
Total Cost of DA A/S (\$)			516,670	-7,906				

* The Bid Sufficiency Ratio for a given market in a given hour is defined as the sum of capacity offers in MWs divided by the capacity requirement in MWs.