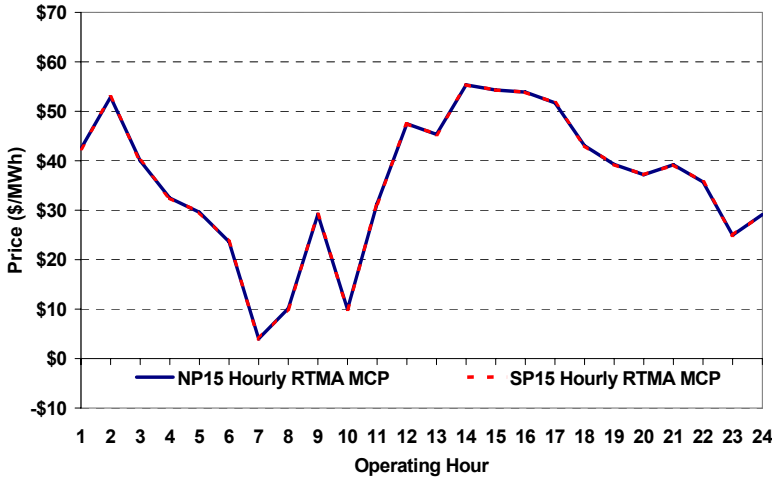
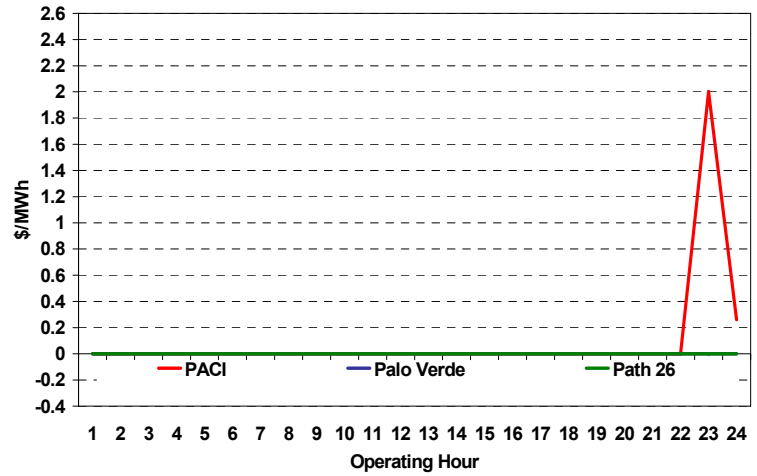


The content of this page is subject to change without notice. Decisions based on information contained herein are the visitor's responsibility.

Real-Time Hourly Average MCP



Selected Day Ahead Branch Group Congestion Prices



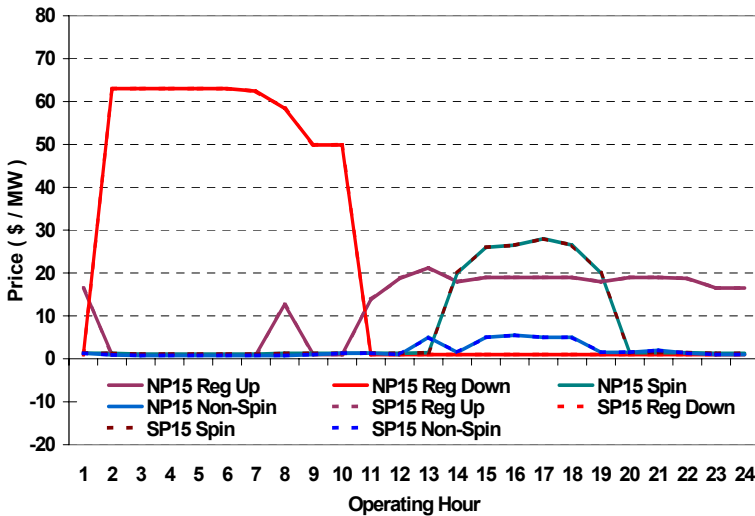
	NP15				SP15			
	Min	Max	Avg	Δ Avg.	Min	Max	Avg	Δ Avg.
Peak	\$ (0.50)	\$ 60.19	\$ 37.25	\$ (8.33)	\$ (0.50)	\$ 60.19	\$ 37.25	\$ (8.33)
Off-Peak	\$ (0.50)	\$ 64.15	\$ 34.76	\$ 16.48	\$ (0.50)	\$ 64.15	\$ 34.76	\$ 16.48

Day-Ahead Inter-Zonal Congestion Market: 24-Jun, 2006

Branch Group	Congestion Cost		Total	Total Cost Percent
	Import	Export		
PACI	\$ 5,198	\$ -	\$ 5,198	100%

Branch Group	Percentage of Hours Being Congested (%)		Avg. Cong. Price (\$/MWh)	
	Import	Export	Import	Export
PACI	8	0	1	

Day Ahead A/S Market Clearing Prices



Intrazonal Congestion: Out-of-Sequence Redispatch Costs

	Inc MWh	Inc Redispatch Costs	Dec MWh	Dec Redispatch Costs
Peak	0	0	-17	510
Off-Peak	0	0	0	0
Total	0	\$ -	-17	\$ 510

Loads:

Peak Load	37,679 MW	Average Load	30920 MW
Time of peak	15:19	Δ Peak from Prev. Day	-4,532 MW

Day Ahead (DA) Market Summary:	Peak				Off-Peak			
	Min	Max	Avg.	Δ Avg.	Min	Max	Avg.	Δ Avg.
Ancillary Services (A/S) Capacity								
Regulation Up Price (\$/MW)	1.00	21.21	14.89	-1.78	1.00	16.50	6.81	-7.66
Regulation Down Price (\$/MW)	1.00	62.42	14.54	9.18	1.00	63.01	39.76	-7.28
Spinning Reserve Price (\$/MW)	1.11	28.00	10.03	-3.48	1.11	1.31	1.21	-0.28
Non-Spinning Reserve Price (\$/MW)	0.80	5.49	2.48	-21.22	0.80	1.33	0.93	-0.06
Regulation Up Bid Sufficiency Ratio*	244%	467%	313%	44%	313%	332%	319%	33%
Regulation Down Bid Sufficiency Ratio*	266%	478%	404%	-46%	135%	265%	179%	3%
Spinning Reserve Bid Sufficiency Ratio*	123%	289%	178%	36%	204%	243%	232%	26%
Non-Spinning Reserve Bid Sufficiency Ratio*	136%	313%	187%	34%	185%	300%	269%	24%
Total Cost of DA A/S (\$)			568,146	-360,034				

* The Bid Sufficiency Ratio for a given market in a given hour is defined as the sum of capacity offers in MWs divided by the capacity requirement in MWs.