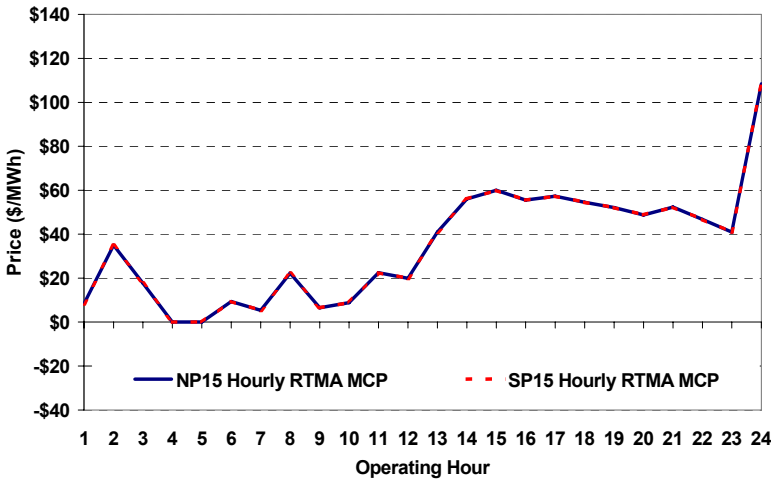
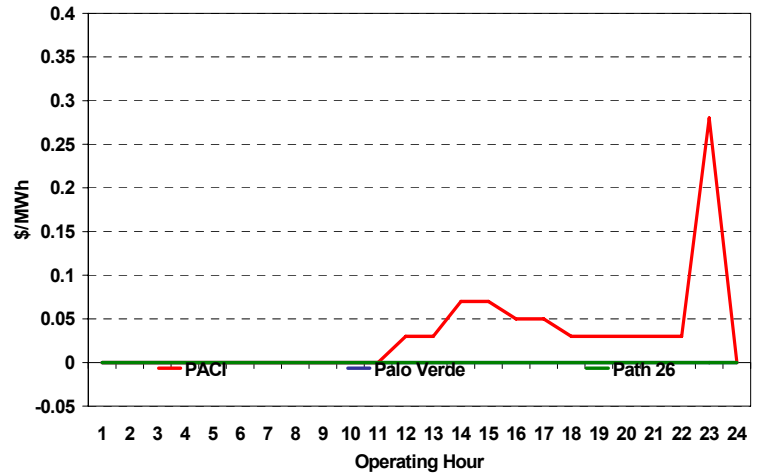


The content of this page is subject to change without notice. Decisions based on information contained herein are the visitor's responsibility.

Real-Time Hourly Average MCP



Selected Day Ahead Branch Group Congestion Prices



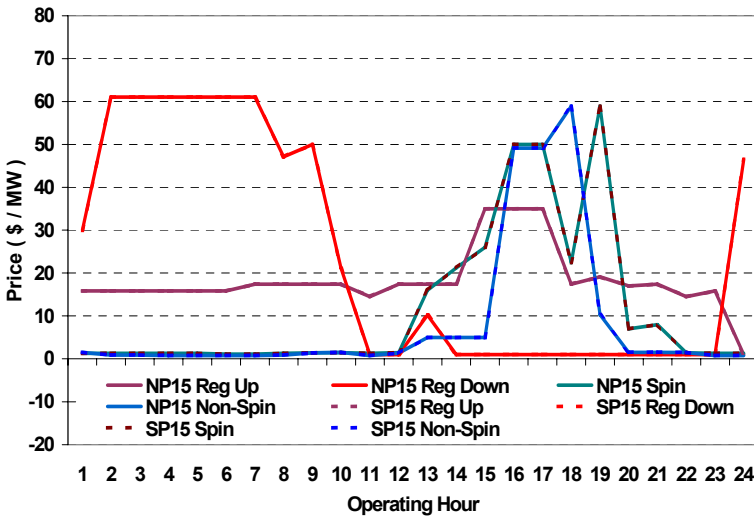
	NP15				SP15			
	Min	Max	Avg	Δ Avg.	Min	Max	Avg	Δ Avg.
RTMA MCP								
Hours 7-22	\$ (0.50)	\$ 62.29	\$ 39.06	\$ 1.81	\$ (0.50)	\$ 62.29	\$ 39.06	\$ 1.81
Hours 1-6, 23-24	\$ (0.50)	\$ 300.00	\$ 26.48	\$ (8.28)	\$ (0.50)	\$ 300.00	\$ 26.48	\$ (8.28)

Day-Ahead Inter-Zonal Congestion Market: 25-Jun, 2006

Branch Group	Congestion Cost		Total	Total Cost Percent
	Import	Export		
PACI	\$ 1,679	\$ -	\$ 1,679	100%

Branch Group	Percentage of Hours Being Congested (%)		Avg. Cong. Price (\$/MWh)	
	Import	Export	Import	Export
PACI	50	0	0	

Day Ahead A/S Market Clearing Prices



Intrazonal Congestion: Out-of-Sequence Redispatch Costs

	Inc MWh	Inc Redispatch Costs	Dec MWh	Dec Redispatch Costs
Peak	0	0	-116	5,386
Off-Peak	0	0	0	0
Total	0	\$ -	-116	\$ 5,386

Loads:

Peak Load	38,714 MW	Average Load	30801 MW
Time of peak	16:38	Δ Peak from Prev. Day	1,035 MW

Day Ahead (DA) Market Summary: Ancillary Services (A/S) Capacity	Peak				Off-Peak			
	Min	Max	Avg.	Δ Avg.	Min	Max	Avg.	Δ Avg.
Regulation Up Price (\$/MW)	14.50	35.00	20.43	5.54	1.00	15.83	13.98	7.16
Regulation Down Price (\$/MW)	1.00	61.01	12.53	-2.01	1.00	61.01	47.82	8.06
Spinning Reserve Price (\$/MW)	1.11	58.90	16.81	6.78	1.11	1.30	1.28	0.07
Non-Spinning Reserve Price (\$/MW)	0.80	58.90	12.10	9.63	0.80	1.53	0.92	-0.01
Regulation Up Bid Sufficiency Ratio*	176%	387%	233%	-80%	233%	373%	267%	-53%
Regulation Down Bid Sufficiency Ratio*	180%	575%	479%	75%	132%	334%	171%	-7%
Spinning Reserve Bid Sufficiency Ratio*	92%	250%	148%	-30%	212%	257%	226%	-6%
Non-Spinning Reserve Bid Sufficiency Ratio*	122%	300%	174%	-13%	208%	275%	253%	-17%
Total Cost of DA A/S (\$)			896,148	328,002				

* The Bid Sufficiency Ratio for a given market in a given hour is defined as the sum of capacity offers in MWs divided by the capacity requirement in MWs.