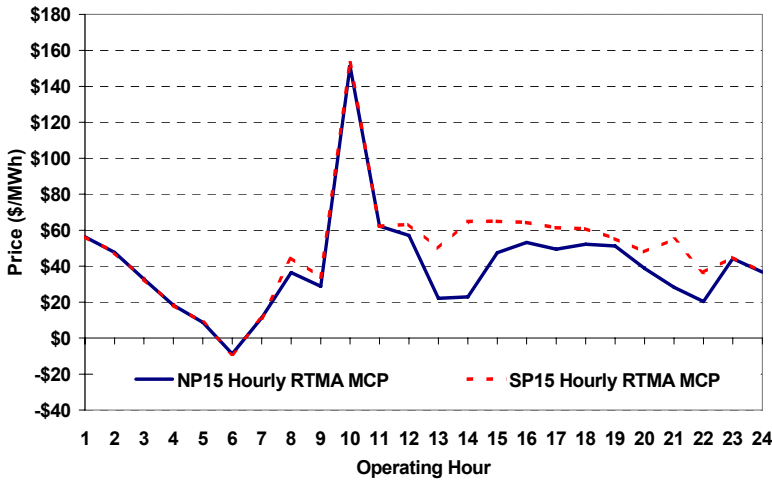
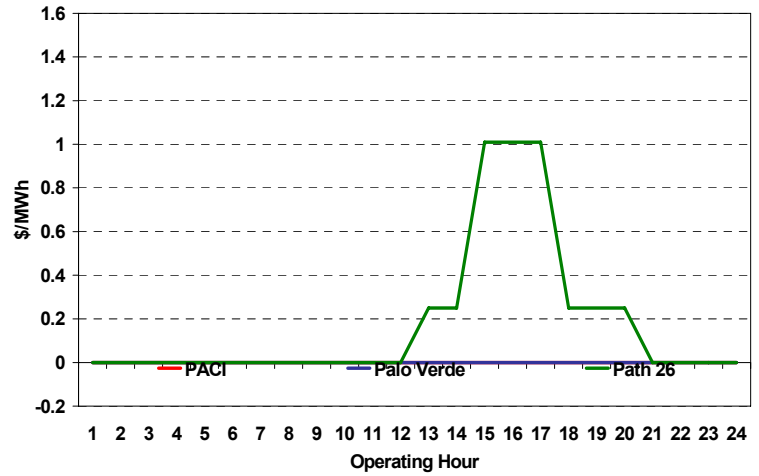


The content of this page is subject to change without notice. Decisions based on information contained herein are the visitor's responsibility.

### Real-Time Hourly Average MCP



### Selected Day Ahead Branch Group Congestion Prices



	NP15				SP15			
	Min	Max	Avg	Δ Avg.	Min	Max	Avg	Δ Avg.
<b>RTMA MCP</b>								
<b>Peak</b>	\$ (30.00)	\$ 399.98	\$ 46.32	\$ (4.54)	\$ (30.00)	\$ 399.98	\$ 58.50	\$ (1.79)
<b>Off-Peak</b>	\$ (30.00)	\$ 88.98	\$ 30.70	\$ (6.13)	\$ (30.00)	\$ 88.98	\$ 30.79	\$ (6.04)

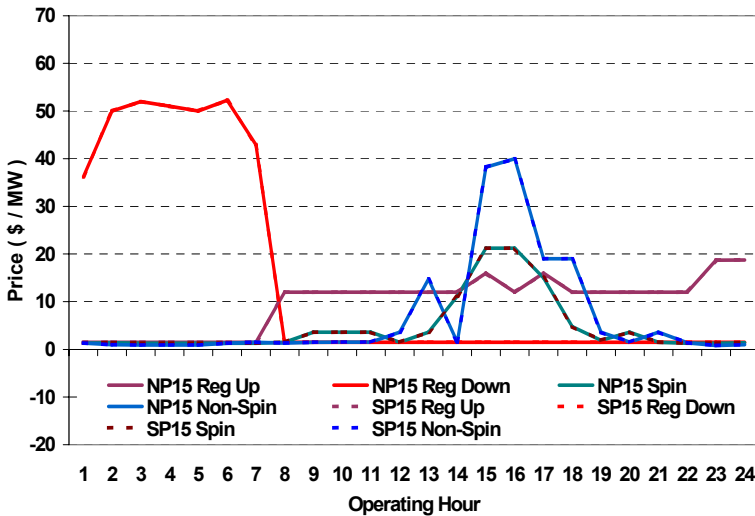
### Day-Ahead Inter-Zonal Congestion Market: 30-Jun, 2006

Branch Group	Congestion Cost		Total	Total Cost Percent
	Import	Export		
Path 26	\$ -	\$ 14,882	\$ 14,882	102%

Branch Group	Percentage of Hours Being Congested (%)		Avg. Cong. Price (\$/MWh)	
	Import	Export	Import	Export
Path 26	0	33		1

### Day Ahead A/S Market Clearing Prices



### Intrazonal Congestion: Out-of-Sequence Redispatch Costs

	Inc MWh	Inc Redispatch Costs	Dec MWh	Dec Redispatch Costs
<b>Peak</b>	0	0	-1,018	52,202
<b>Off-Peak</b>	0	0	0	0
<b>Total</b>	0	\$ -	-1,018	\$ 52,202

### Loads:

Peak Load	41,901 MW	Average Load	33660 MW
Time of peak	15:53	Δ Peak from Prev. Day	-1,940 MW

Day Ahead (DA) Market Summary:	Peak				Off-Peak			
	Min	Max	Avg.	Δ Avg.	Min	Max	Avg.	Δ Avg.
<b>Ancillary Services (A/S) Capacity</b>								
Regulation Up Price (\$/MW)	1.50	15.99	11.84	-6.19	1.50	18.75	5.81	-13.12
Regulation Down Price (\$/MW)	1.50	42.94	4.09	-0.81	1.50	52.24	36.81	-4.08
Spinning Reserve Price (\$/MW)	1.30	21.21	6.27	-3.39	1.30	1.40	1.33	0.02
Non-Spinning Reserve Price (\$/MW)	1.32	40.00	9.60	-2.50	0.80	1.33	1.02	-0.08
Regulation Up Bid Sufficiency Ratio*	266%	487%	400%	81%	313%	430%	342%	23%
Regulation Down Bid Sufficiency Ratio*	196%	389%	275%	-32%	186%	286%	213%	-13%
Spinning Reserve Bid Sufficiency Ratio*	136%	232%	191%	13%	204%	234%	220%	-30%
Non-Spinning Reserve Bid Sufficiency Ratio*	156%	303%	232%	51%	257%	320%	300%	27%
<b>Total Cost of DA A/S (\$)</b>			<b>505,750</b>	<b>-229,967</b>				

\* The Bid Sufficiency Ratio for a given market in a given hour is defined as the sum of capacity offers in MWs divided by the capacity requirement in MWs.