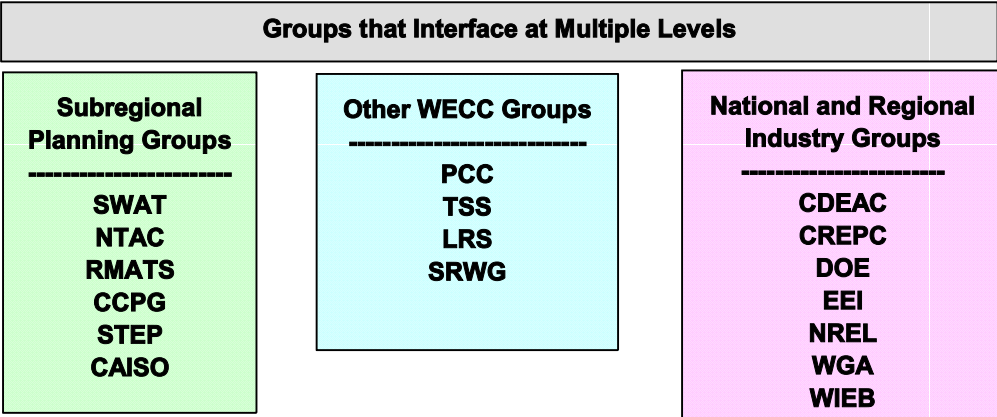
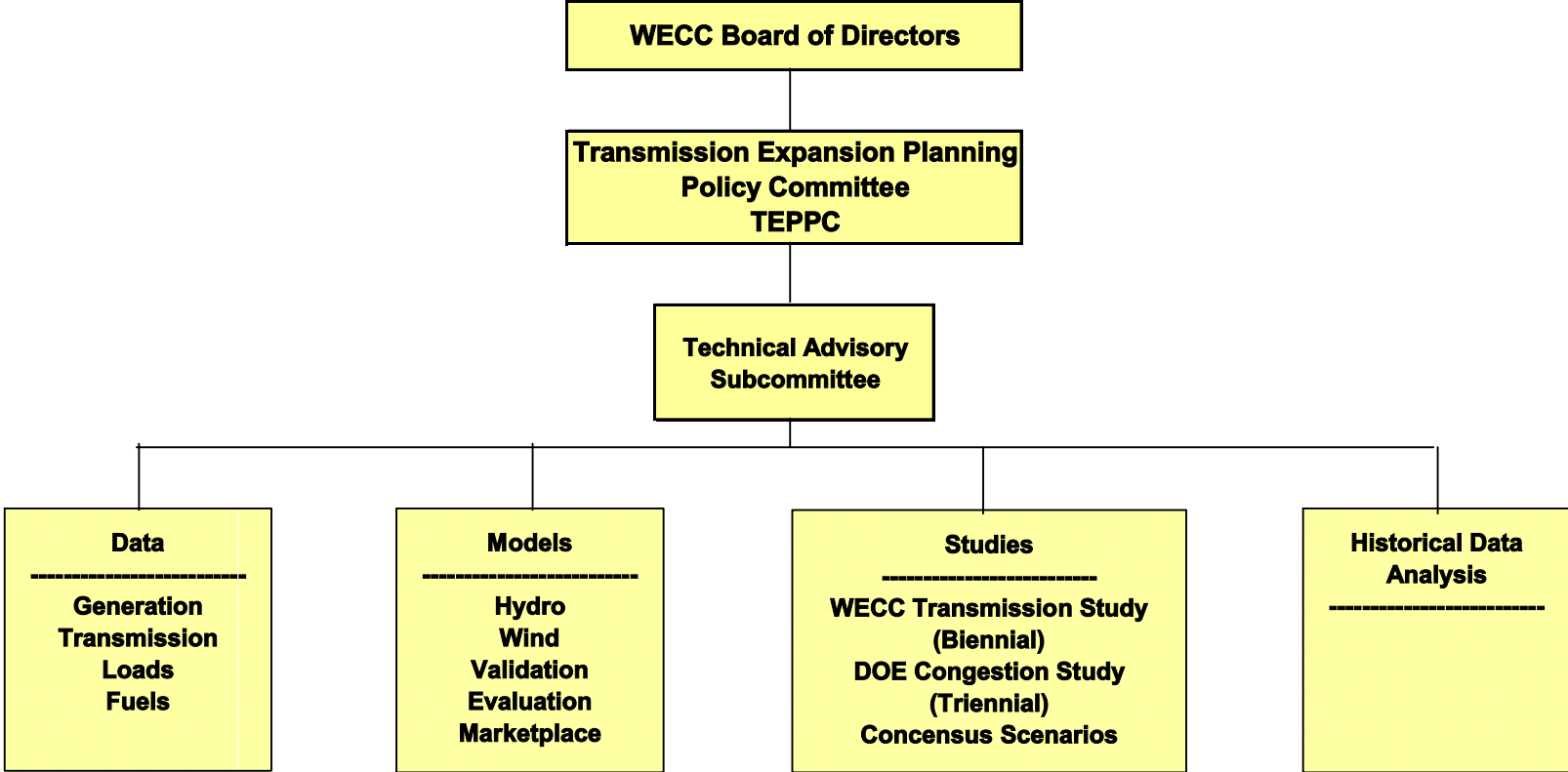


**WECC Transmission
Expansion Planning Policy
Committee (TEPPC)**

STEP Meeting

November 17, 2006

Bob Smith



TAS Meeting Oct 11, 2006

- Work Group chairs chosen
 - Data Work Group – Kurt Granat
 - Models Work Group – Gordon Dobson-Mack
 - Studies Work Group – Robert Stade
 - Historical Data Work Group – Chris Reese
- Work Groups are identifying tasks and schedules for work plan
- Next TAS Meeting Dec 13-14 in Phoenix

Future Events and Plans

- Models Work Group scheduled two webinars regarding planning models and modeling assumptions
 - 11/27/06 – Introduction to Production Cost Modeling by Jamie Austin
 - 12/04/06 – Generation and Transmission Interaction by Gordon Dobson-Mack and RAS by Donald Davies

Future Events and Plans

- TAS Goal to finish work plan by 12/14/06 TAS meeting
- TEPPC to approve work plan Feb 2007
- Target date for first TEPPC study report is Feb 2008