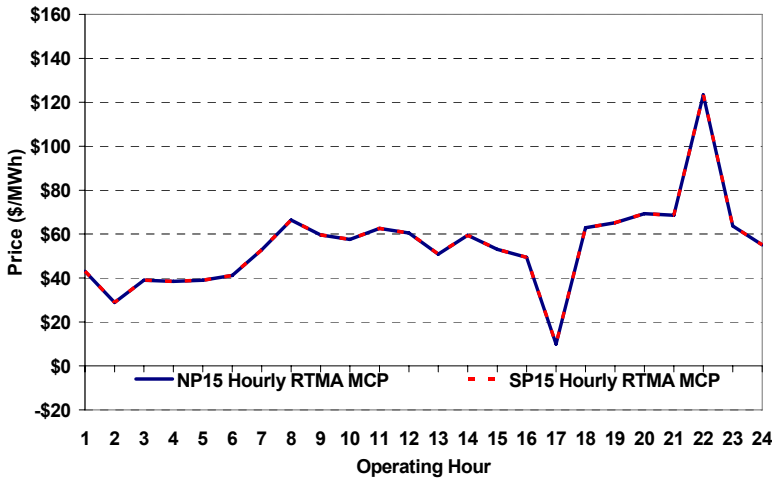
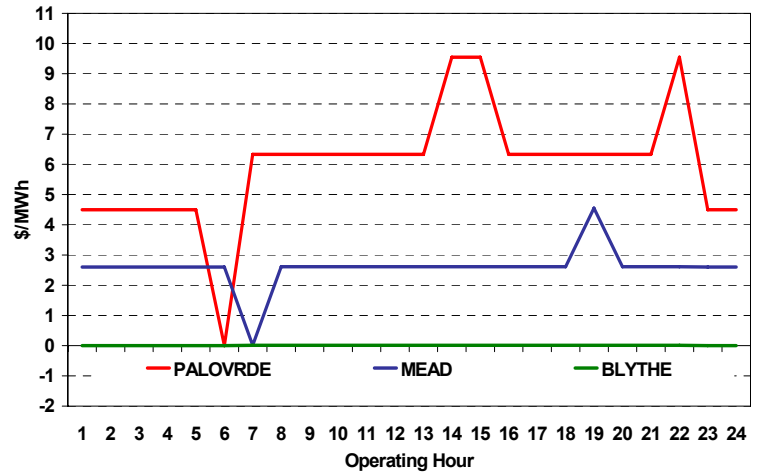


The content of this page is subject to change without notice. Decisions based on information contained herein are the visitor's responsibility.

Real-Time Hourly Average MCP



Selected Day Ahead Branch Group Congestion Prices

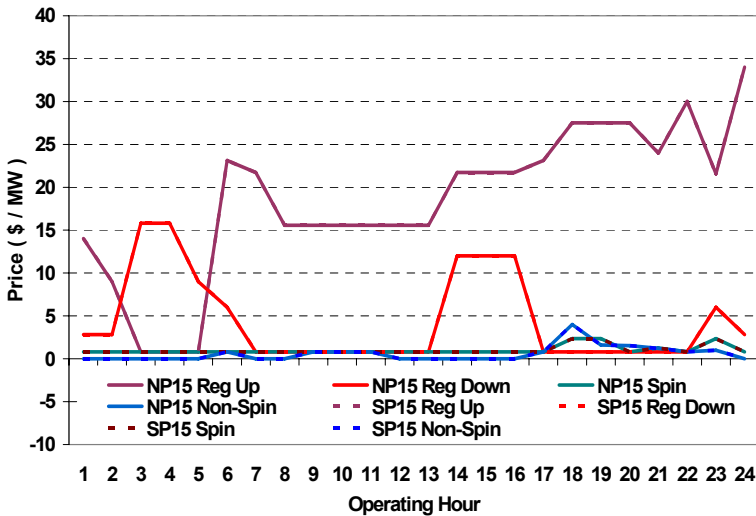


	NP15				SP15			
	Min	Max	Avg	Δ Avg.	Min	Max	Avg	Δ Avg.
Peak	\$ (30.00)	\$ 391.00	\$ 59.33	\$ 4.39	\$ (30.00)	\$ 391.00	\$ 59.33	\$ 4.39
Off-Peak	\$ 23.00	\$ 77.87	\$ 43.80	\$ (4.28)	\$ 23.00	\$ 77.87	\$ 43.80	\$ (4.28)

Day-Ahead Inter-Zonal Congestion Market: 17-Dec, 2007

Branch Group	Congestion Cost		Total	Total Cost Percent
	Import	Export		
PALOVRDE	\$ 355,677	\$ -	\$ 355,677	90%
MEAD	\$ 41,485	\$ -	\$ 41,485	10%
BLYTHE	\$ 29	\$ -	\$ 29	0%

Day Ahead A/S Market Clearing Prices



Intrazonal Congestion: Out-of-Sequence Redispatch Costs

	Inc MWh	Inc Redispatch Costs	Dec MWh	Dec Redispatch Costs
Peak	260	37,948	-6,575	29,091
Off-Peak	11	1,109	-787	1,708
Total	270	\$ 39,057	-7,363	\$ 30,798

Reliability: Must-Offer Unit Commitments

Commitment Type	Avg Hrlly P-Min MW	Daily Min-Load Cost
FERCMOO	0	\$0
RA	123	\$192,241
Totals	123	\$192,241

Loads:

Peak Load	34,110 MW	Average Load	27762 MW
Time of peak	17:57	Δ Peak from Prev. Day	3,054 MW

Day Ahead (DA) Market Summary: Ancillary Services (A/S) Capacity	Peak				Off-Peak			
	Min	Max	Avg.	Δ Avg.	Min	Max	Avg.	Δ Avg.
Regulation Up Price (\$/MW)	15.55	30.02	21.24	-3.29	0.81	34.00	13.01	-38.05
Regulation Down Price (\$/MW)	0.81	11.99	2.91	-4.24	2.82	15.81	7.64	0.07
Spinning Reserve Price (\$/MW)	0.81	2.35	1.03	-1.79	0.81	2.35	1.00	-0.46
Non-Spinning Reserve Price (\$/MW)	0.00	4.00	0.77	0.30	0.00	1.00	0.23	0.10
Regulation Up Bid Sufficiency Ratio*	170%	379%	311%	34%	175%	442%	346%	20%
Regulation Down Bid Sufficiency Ratio*	214%	368%	289%	-10%	217%	366%	268%	12%
Spinning Reserve Bid Sufficiency Ratio*	140%	211%	188%	-9%	173%	268%	233%	-4%
Non-Spinning Reserve Bid Sufficiency Ratio*	156%	278%	236%	-27%	203%	334%	305%	-5%
Total Cost of DA A/S (\$)			255,897	-218,405				

* The Bid Sufficiency Ratio for a given market in a given hour is defined as the sum of capacity offers in MWs divided by the capacity requirement in MWs.