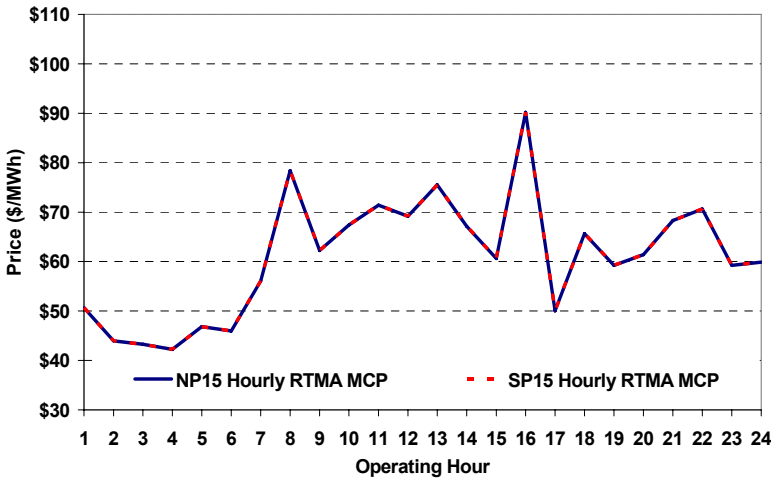
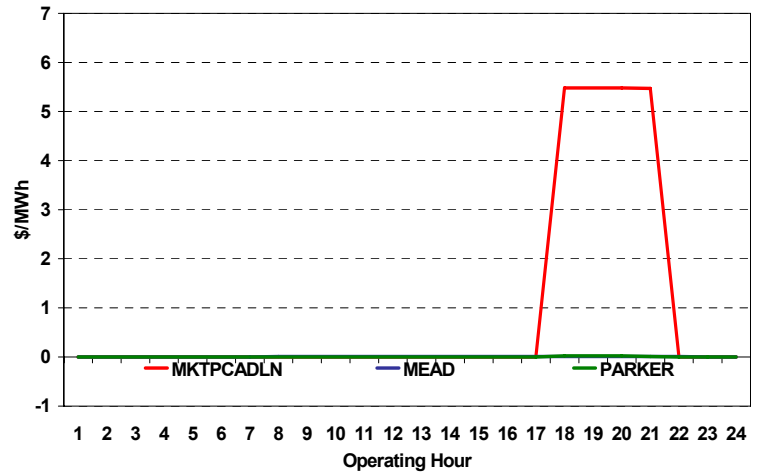


The content of this page is subject to change without notice. Decisions based on information contained herein are the visitor's responsibility.

Real-Time Hourly Average MCP



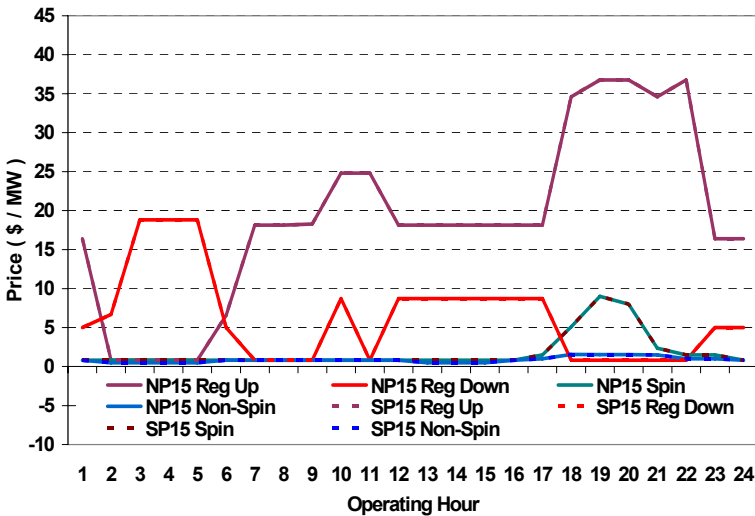
Selected Day Ahead Branch Group Congestion Prices



	NP15				SP15			
	Min	Max	Avg	Δ Avg.	Min	Max	Avg	Δ Avg.
Peak	\$ 29.07	\$ 169.08	\$ 66.50	\$ 7.17	\$ 29.07	\$ 169.08	\$ 66.50	\$ 7.17
Off-Peak	\$ (5.00)	\$ 234.00	\$ 50.29	\$ 6.49	\$ (5.00)	\$ 234.00	\$ 50.29	\$ 6.49

Day-Ahead Inter-Zonal Congestion Market: 18-Dec, 2007				
Branch Group	Congestion Cost		Total	Total Cost Percent
	Import	Export		
MKTPCADLN	\$ 9,269	\$ -	\$ 9,269	99%
MEAD	\$ 101	\$ -	\$ 101	1%
PARKER	\$ 11	\$ -	\$ 11	0%

Day Ahead A/S Market Clearing Prices



Intrazonal Congestion: Out-of-Sequence Redispatch Costs				
	Inc MWh	Inc Redispatch Costs	Dec MWh	Dec Redispatch Costs
Peak	351	17,693	-4,587	47,102
Off-Peak	45	3,116	-429	5,582
Total	395	\$ 20,809	-5,016	\$ 52,684

Reliability: Must-Offer Unit Commitments		
Commitment Type	Avg Hrlly P-Min MW	Daily Min-Load Cost
FERCMOO	0	\$0
RA	70	\$87,471
Totals	70	\$87,471

Loads:			
Peak Load	33,971 MW	Average Load	28161 MW
Time of peak	17:56	Δ Peak from Prev. Day	-139 MW

Day Ahead (DA) Market Summary:	Peak				Off-Peak			
	Min	Max	Avg.	Δ Avg.	Min	Max	Avg.	Δ Avg.
Ancillary Services (A/S) Capacity								
Regulation Up Price (\$/MW)	18.13	36.77	24.53	3.29	0.81	16.39	7.37	-5.64
Regulation Down Price (\$/MW)	0.81	8.72	4.27	1.36	5.00	18.81	10.39	2.75
Spinning Reserve Price (\$/MW)	0.81	9.00	2.22	1.19	0.81	1.50	0.90	-0.11
Non-Spinning Reserve Price (\$/MW)	0.50	1.55	0.95	0.18	0.50	1.00	0.68	0.45
Regulation Up Bid Sufficiency Ratio*	145%	369%	297%	-14%	222%	404%	334%	-12%
Regulation Down Bid Sufficiency Ratio*	197%	407%	303%	13%	173%	292%	224%	-44%
Spinning Reserve Bid Sufficiency Ratio*	123%	198%	176%	-12%	176%	231%	208%	-25%
Non-Spinning Reserve Bid Sufficiency Ratio*	156%	263%	230%	-6%	235%	293%	274%	-31%
Total Cost of DA A/S (\$)			298,273	42,376				

* The Bid Sufficiency Ratio for a given market in a given hour is defined as the sum of capacity offers in MWs divided by the capacity requirement in MWs.