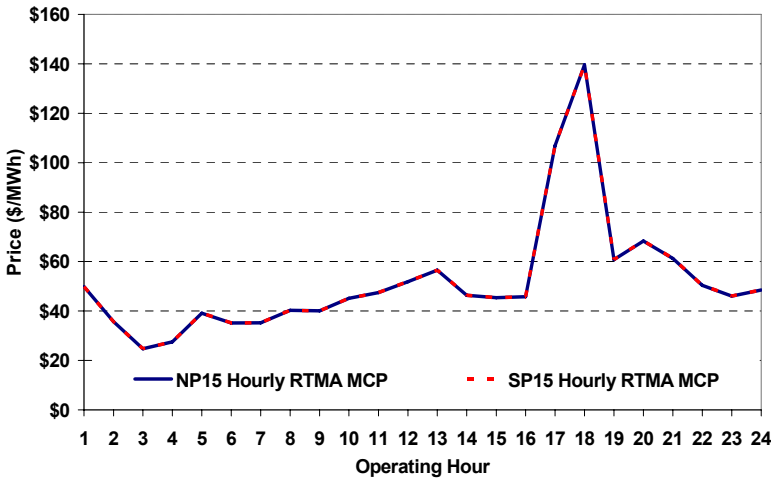
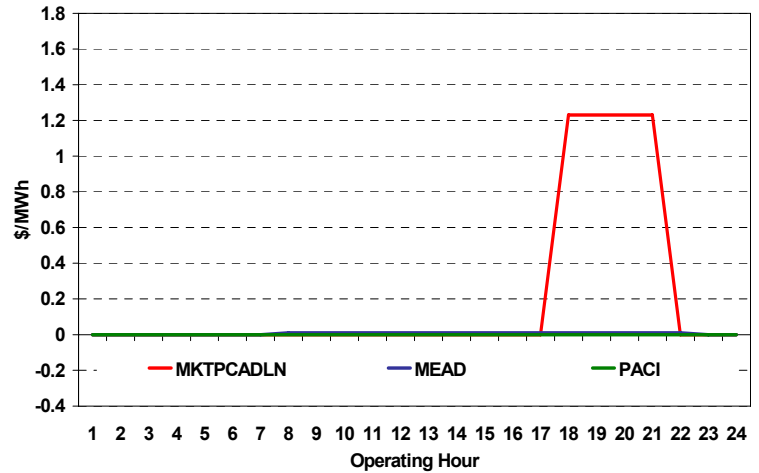


The content of this page is subject to change without notice. Decisions based on information contained herein are the visitor's responsibility.

Real-Time Hourly Average MCP



Selected Day Ahead Branch Group Congestion Prices

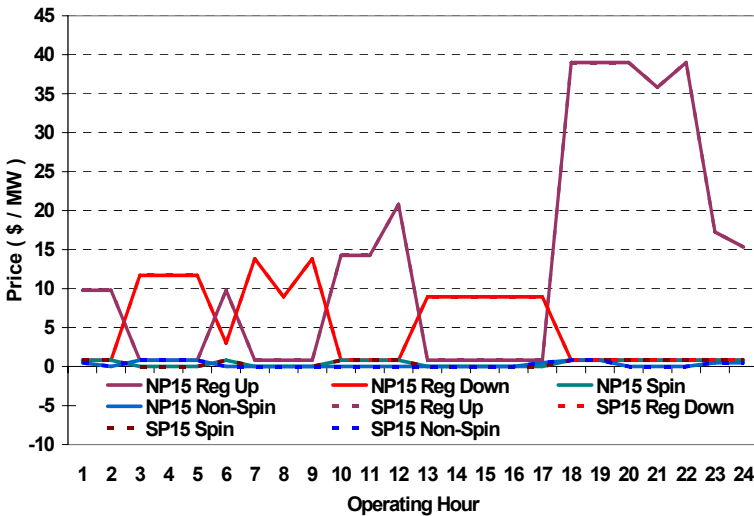


	NP15				SP15			
	Min	Max	Avg	Δ Avg.	Min	Max	Avg	Δ Avg.
Peak	\$ 23.99	\$ 268.79	\$ 53.89	\$ (9.31)	\$ 23.99	\$ 268.79	\$ 53.89	\$ (9.31)
Off-Peak	\$ 10.00	\$ 73.00	\$ 39.36	\$ (3.24)	\$ 10.00	\$ 73.00	\$ 39.36	\$ (3.24)

Day-Ahead Inter-Zonal Congestion Market: 29-Dec, 2007

Branch Group	Congestion Cost		Total	Total Cost Percent
	Import	Export		
MKTPCADLN	\$ 2,081	\$ -	\$ 2,081	95%
MEAD	\$ 101	\$ -	\$ 101	5%
PACI	\$ -	\$ -	\$ -	0%

Day Ahead A/S Market Clearing Prices



Intrazonal Congestion: Out-of-Sequence Redispatch Costs

	Inc MWh	Inc Redispatch Costs	Dec MWh	Dec Redispatch Costs
Peak	234	41,251	-257	2,422
Off-Peak	79	14,713	-446	3,255
Total	313	\$ 55,964	-703	\$ 5,677

Reliability: Must-Offer Unit Commitments

Commitment Type	Avg Hrlly P-Min MW	Daily Min-Load Cost
FERCMOO	0	\$0
RA	145	\$188,774
Totals	145	\$188,774

Loads:

Peak Load	29,545 MW	Average Load	24394 MW
Time of peak	18:11	Δ Peak from Prev. Day	-2,435 MW

Day Ahead (DA) Market Summary: Ancillary Services (A/S) Capacity	Peak				Off-Peak			
	Min	Max	Avg.	Δ Avg.	Min	Max	Avg.	Δ Avg.
Regulation Up Price (\$/MW)	0.81	39.00	15.48	1.92	0.81	17.26	8.05	1.76
Regulation Down Price (\$/MW)	0.81	13.83	5.49	2.19	0.81	11.70	5.17	0.69
Spinning Reserve Price (\$/MW)	0.00	0.81	0.41	-0.41	0.00	0.81	0.51	-0.30
Non-Spinning Reserve Price (\$/MW)	0.00	0.80	0.13	-0.06	0.00	0.80	0.49	0.26
Regulation Up Bid Sufficiency Ratio*	106%	375%	263%	17%	158%	385%	310%	-24%
Regulation Down Bid Sufficiency Ratio*	159%	324%	237%	-79%	162%	309%	206%	-45%
Spinning Reserve Bid Sufficiency Ratio*	123%	252%	191%	42%	149%	238%	211%	12%
Non-Spinning Reserve Bid Sufficiency Ratio*	159%	307%	248%	49%	210%	290%	270%	9%
Total Cost of DA A/S (\$)			200,970	56,108				

* The Bid Sufficiency Ratio for a given market in a given hour is defined as the sum of capacity offers in MWs divided by the capacity requirement in MWs.