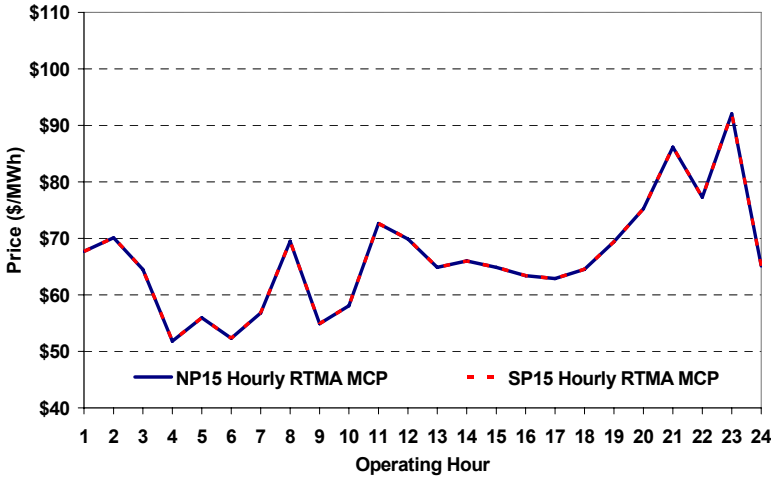
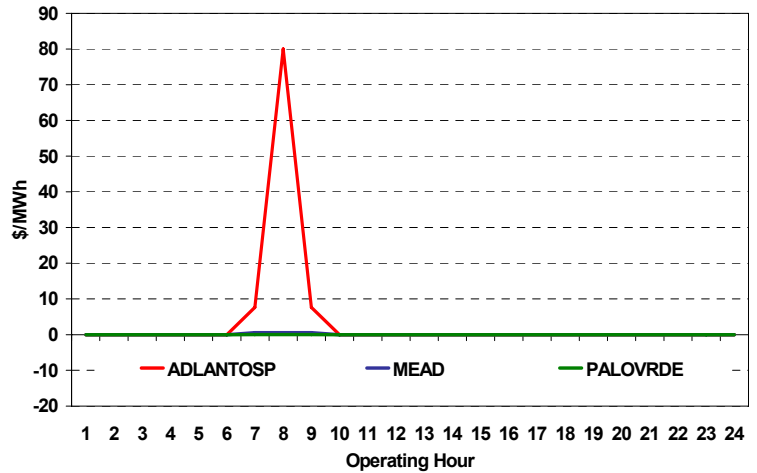


The content of this page is subject to change without notice. Decisions based on information contained herein are the visitor's responsibility.

Real-Time Hourly Average MCP



Selected Day Ahead Branch Group Congestion Prices

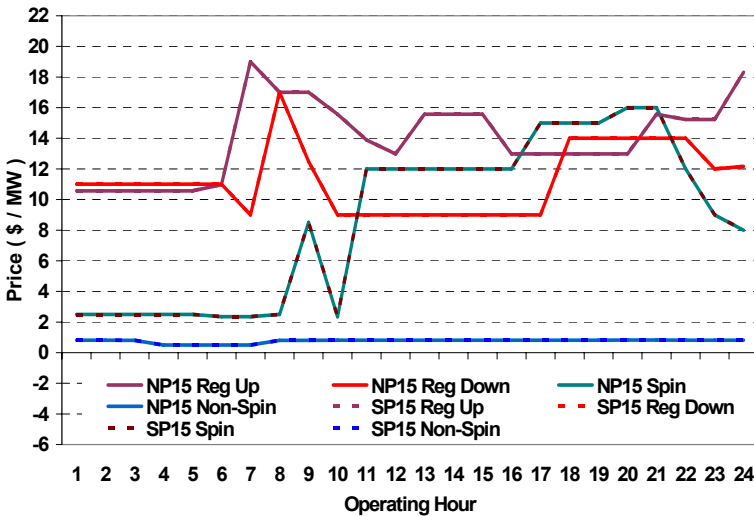


	NP15				SP15			
	Min	Max	Avg	Δ Avg.	Min	Max	Avg	Δ Avg.
RTMA MCP								
Hours 7-22	\$ (0.01)	\$ 110.35	\$ 67.48	\$(16.39)	\$ (0.01)	\$ 110.35	\$ 67.48	\$(16.39)
Hours 1-6, 23-24	\$ (0.01)	\$ 225.00	\$ 64.71	\$(9.79)	\$ (0.01)	\$ 225.00	\$ 64.71	\$(9.79)

Day-Ahead Inter-Zonal Congestion Market: 04-May, 2008

Branch Group	Congestion Cost		Total	Total Cost Percent
	Import	Export		
ADLANTOSP	\$ 8,861	\$ -	\$ 8,861	87%
MEAD	\$ 1,067	\$ -	\$ 1,067	11%
PALOVRDE	\$ 225	\$ -	\$ 225	2%

Day Ahead A/S Market Clearing Prices



Intrazonal Congestion: Out-of-Sequence Redispatch Costs

	Inc MWh	Inc Redispatch Costs	Dec MWh	Dec Redispatch Costs
Peak	66	11,758	-77	664
Off-Peak	82	17,498	-26	92
Total	149	\$ 29,255	-103	\$ 756

Reliability: Must-Offer Unit Commitments

Commitment Type	Avg Hrlly P-Min MW	Daily Min-Load Cost
FERCMOO	0	\$0
RA	53	\$153,909
Totals	53	\$153,909

Loads:

Peak Load	27,983 MW	Average Load	23690 MW
Time of peak	20:25	Δ Peak from Prev. Day	-19 MW

Day Ahead (DA) Market Summary: Ancillary Services (A/S) Capacity	Peak				Off-Peak			
	Min	Max	Avg.	Δ Avg.	Min	Max	Avg.	Δ Avg.
Regulation Up Price (\$/MW)	12.98	19.00	14.87	1.79	10.57	18.31	12.17	1.75
Regulation Down Price (\$/MW)	9.00	17.00	11.28	-1.67	11.00	12.17	11.27	0.85
Spinning Reserve Price (\$/MW)	2.35	16.00	11.04	2.74	2.35	9.00	3.98	-1.32
Non-Spinning Reserve Price (\$/MW)	0.50	0.82	0.79	0.01	0.50	0.81	0.69	-0.11
Regulation Up Bid Sufficiency Ratio*	144%	299%	189%	19%	112%	280%	233%	2%
Regulation Down Bid Sufficiency Ratio*	243%	416%	366%	-36%	265%	486%	338%	10%
Spinning Reserve Bid Sufficiency Ratio*	99%	222%	131%	1%	123%	210%	176%	6%
Non-Spinning Reserve Bid Sufficiency Ratio*	160%	281%	193%	-5%	177%	262%	231%	-3%
Total Cost of DA A/S (\$)				379,603				31,415

* The Bid Sufficiency Ratio for a given market in a given hour is defined as the sum of capacity offers in MWs divided by the capacity requirement in MWs.