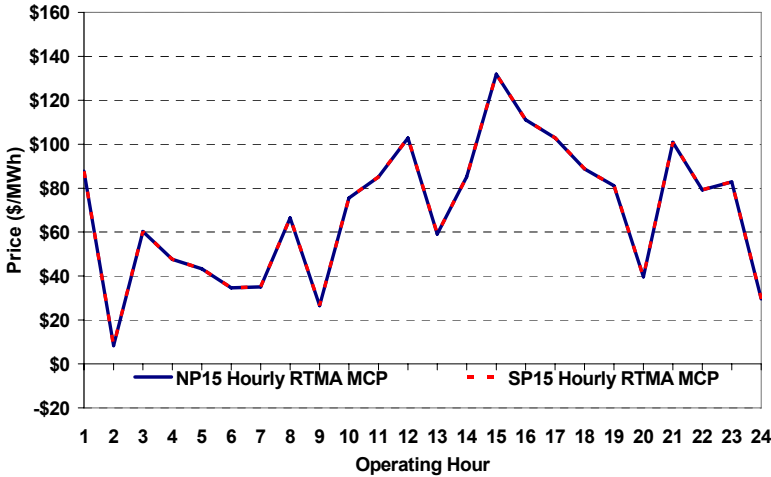
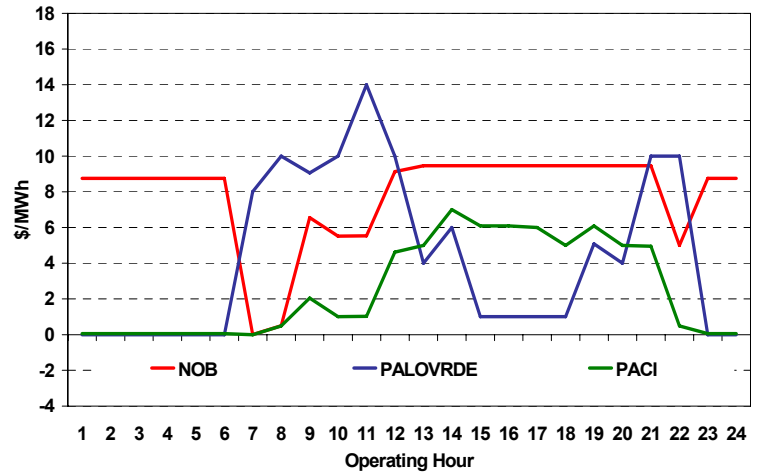


The content of this page is subject to change without notice. Decisions based on information contained herein are the visitor's responsibility.

Real-Time Hourly Average MCP



Selected Day Ahead Branch Group Congestion Prices

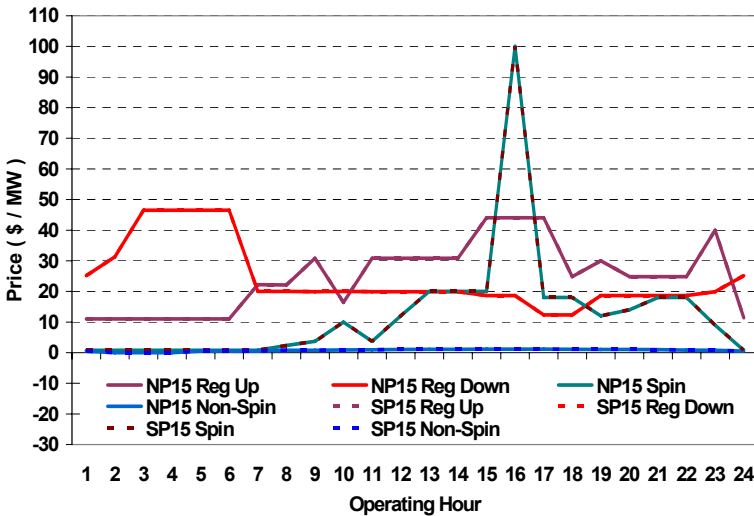


	NP15				SP15			
	Min	Max	Avg	Δ Avg.	Min	Max	Avg	Δ Avg.
RTMA MCP								
Peak	\$ (28.00)	\$ 300.00	\$ 78.96	\$ (11.05)	\$ (28.00)	\$ 300.00	\$ 78.96	\$ (11.05)
Off-Peak	\$ (4.00)	\$ 128.72	\$ 52.59	\$ (53.21)	\$ (4.00)	\$ 128.72	\$ 52.59	\$ (53.21)

Day-Ahead Inter-Zonal Congestion Market: 14-May, 2008

Branch Group	Congestion Cost		Total	Total Cost Percent
	Import	Export		
NOB	\$ 275,103	\$ -	\$ 275,103	31%
PALOVRDE	\$ 260,185	\$ -	\$ 260,185	29%
PACI	\$ 152,706	\$ -	\$ 152,706	17%

Day Ahead A/S Market Clearing Prices



Intrazonal Congestion: Out-of-Sequence Redispatch Costs

	Inc MWh	Inc Redispatch Costs	Dec MWh	Dec Redispatch Costs
Peak	5,211	239,399	-9,079	228,520
Off-Peak	190	28,750	-370	3,914
Total	5,401	\$ 268,149	-9,449	\$ 232,435

Reliability: Must-Offer Unit Commitments

Commitment Type	Avg Hrlly P-Min MW	Daily Min-Load Cost
FERCMOO	0	\$0
RA	335	\$773,580
Totals	335	\$773,580

Loads:

Peak Load	33,765 MW	Average Load	28850 MW
Time of peak	15:26	Δ Peak from Prev. Day	2,585 MW

Day Ahead (DA) Market Summary: Ancillary Services (A/S) Capacity	Peak				Off-Peak			
	Min	Max	Avg.	Δ Avg.	Min	Max	Avg.	Δ Avg.
Regulation Up Price (\$/MW)	16.41	44.06	29.77	6.62	11.00	40.00	14.67	-0.48
Regulation Down Price (\$/MW)	12.33	20.00	18.49	5.84	19.93	46.50	35.94	17.40
Spinning Reserve Price (\$/MW)	0.80	100.00	18.15	3.21	0.80	9.00	1.83	0.13
Non-Spinning Reserve Price (\$/MW)	0.50	1.16	0.98	0.17	0.00	0.81	0.35	0.09
Regulation Up Bid Sufficiency Ratio*	115%	260%	156%	26%	167%	346%	278%	29%
Regulation Down Bid Sufficiency Ratio*	138%	357%	259%	-14%	57%	196%	90%	-29%
Spinning Reserve Bid Sufficiency Ratio*	94%	188%	130%	1%	103%	176%	161%	3%
Non-Spinning Reserve Bid Sufficiency Ratio*	122%	241%	157%	-12%	156%	256%	238%	10%
Total Cost of DA A/S (\$)			701,852	200,478				

* The Bid Sufficiency Ratio for a given market in a given hour is defined as the sum of capacity offers in MWs divided by the capacity requirement in MWs.