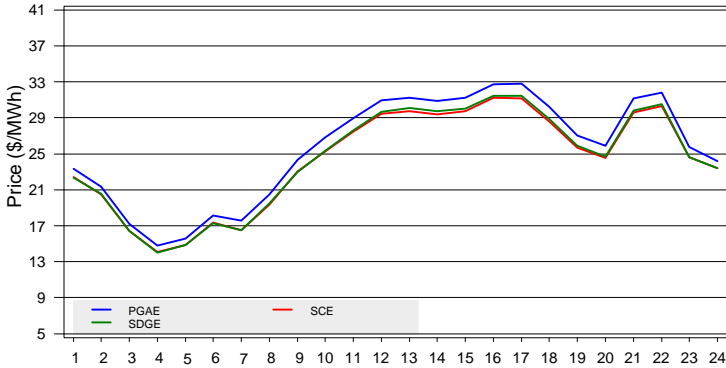
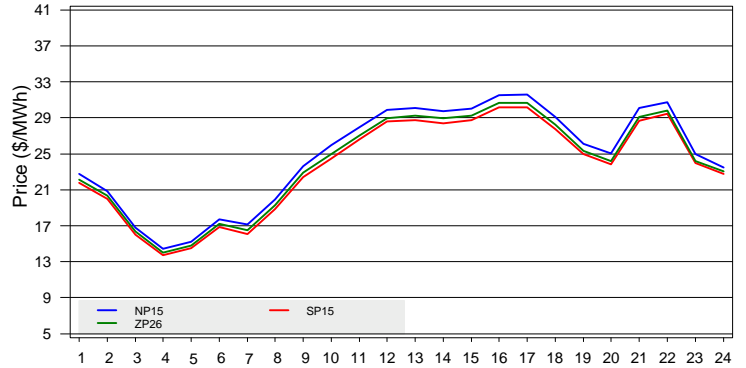


The information contained in this report is preliminary, subject to change without notice. No inference, decision, or conclusion should be made based on the information in this report or any series of these reports. Any questions regarding this report should be directed to CAISO Market Services.

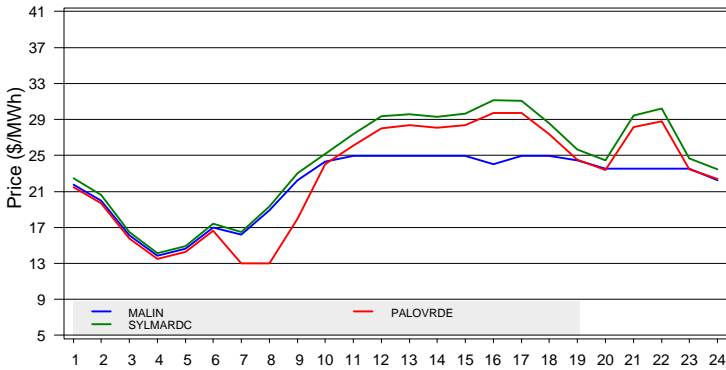
Default LAP LMP



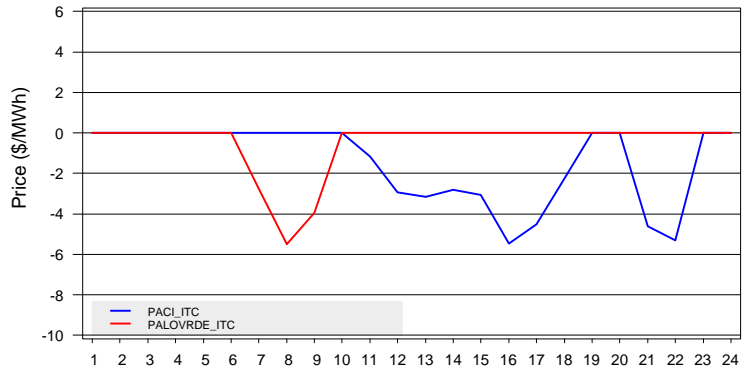
Trading Hub LMP



Selected Tie-Point LMP



Selected Inter-Tie Shadow Prices



LMP Statistics for On and Off-Peak Hours (\$/MWh)

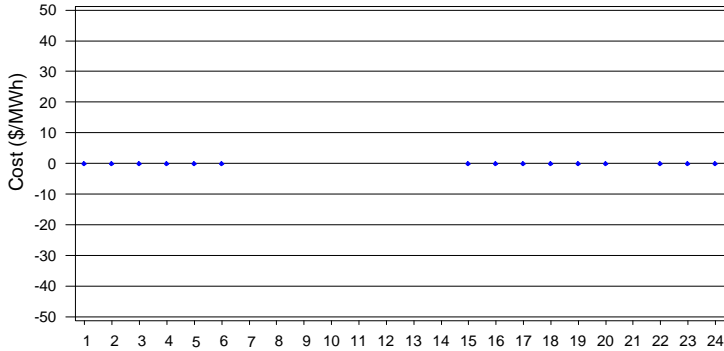
	NP15			SP15			ZP26			PGAE			SCE			SDGE		
	Max	Mean	Min	Max	Mean	Min	Max	Mean	Min	Max	Mean	Min	Max	Mean	Min	Max	Mean	Min
OFF	24.94	19.51	14.41	23.95	18.70	13.71	24.20	19.01	14.01	25.75	20.05	14.77	24.62	19.20	14.06	24.64	19.19	14.04
ON	31.59	27.40	17.12	30.18	26.11	16.06	30.69	26.57	16.50	32.81	28.37	17.57	31.22	26.94	16.47	31.46	27.13	16.48

Selected Inter-Tie Congestion Costs

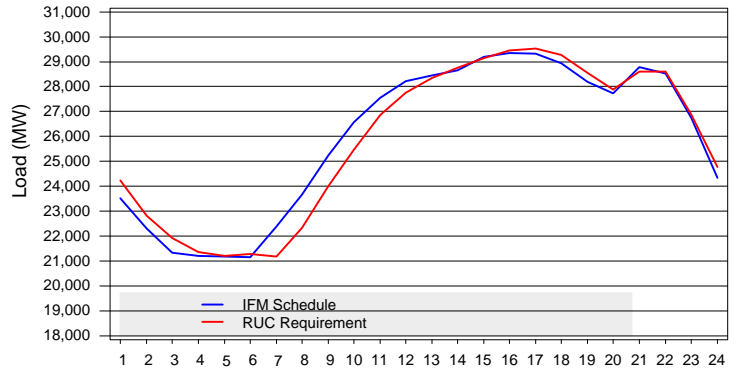
Inter-Tie	Import Costs	Export Costs	Total Costs	Total Cost Percent
PACI_ITC	\$108,612.40	\$0.00	\$108,612.40	76.55%
PALOVRDE_ITC	\$33,272.59	\$0.00	\$33,272.59	23.45%

The information contained in this report is preliminary, subject to change without notice. No inference, decision, or conclusion should be made based on the information in this report or any series of these reports. Any questions regarding this report should be directed to CAISO Market Services.

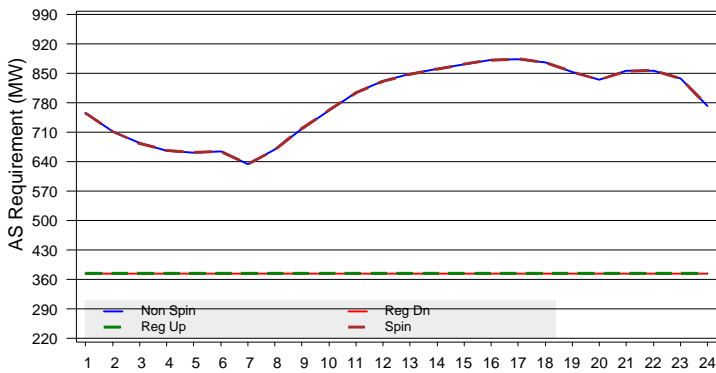
RUC Cost to Underscheduled Load



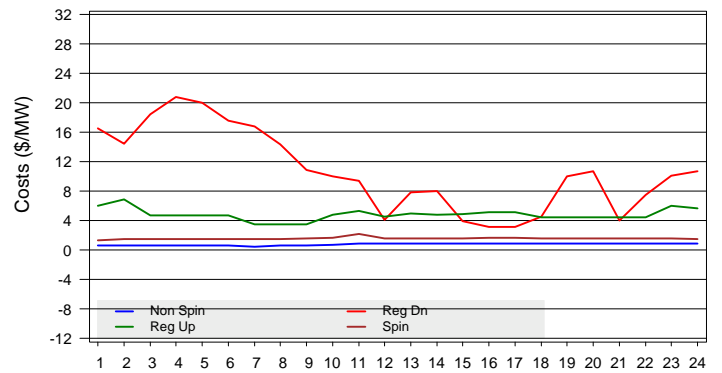
Cleared Quantity and RUC Requirements



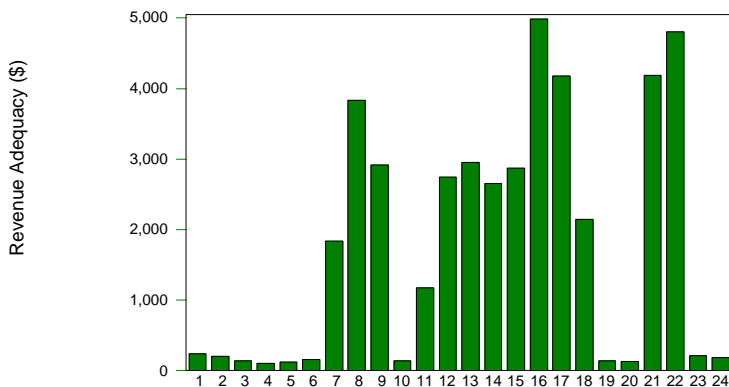
A/S System Requirement



Average A/S Costs



CRR Revenue Adequacy



CRR Statistics

	20JUN2009	Cumulative
Congestion Rent	\$161,962.23	\$3,180,912.55
CRR Payment	\$118,948.04	\$2,741,184.00
CRR Adequacy	\$43,014.19	\$439,728.54
Adequacy Ratio	136.2%	116.0%