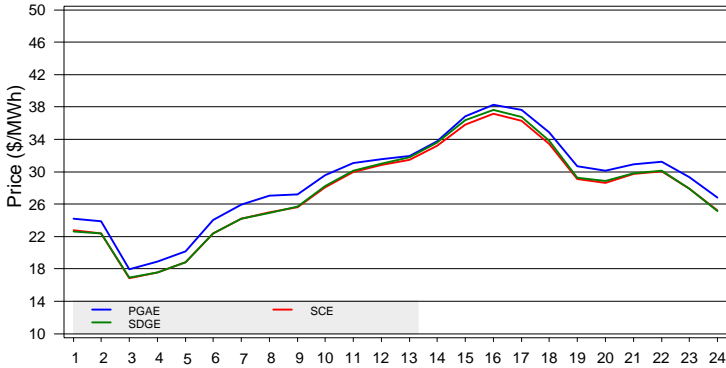
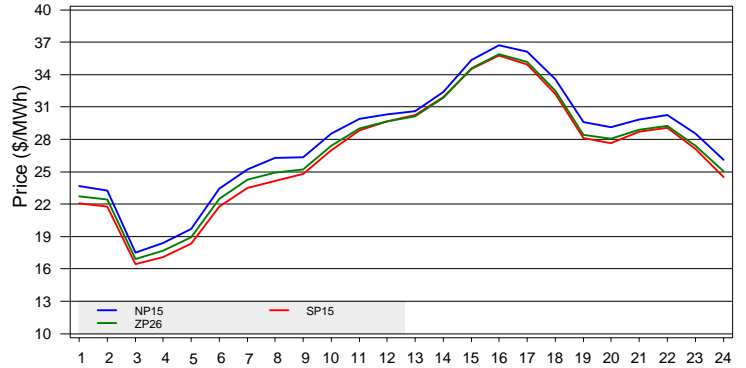


The information contained in this report is preliminary, subject to change without notice. No inference, decision, or conclusion should be made based on the information in this report or any series of these reports. Any questions regarding this report should be directed to CAISO Market Services.

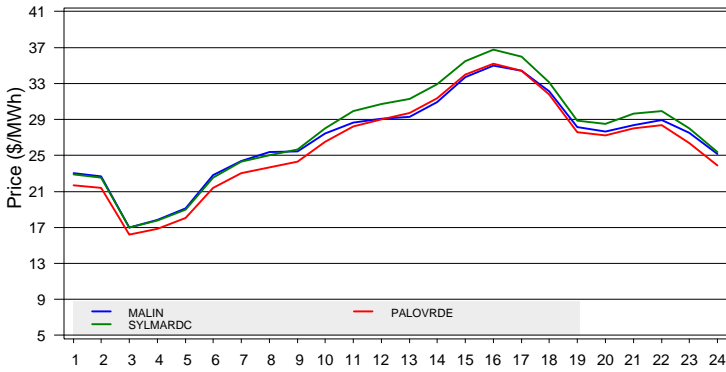
Default LAP LMP



Trading Hub LMP



Selected Tie-Point LMP



Selected Inter-Tie Shadow Prices

No Constraint is Binding

LMP Statistics for On and Off-Peak Hours (\$/MWh)

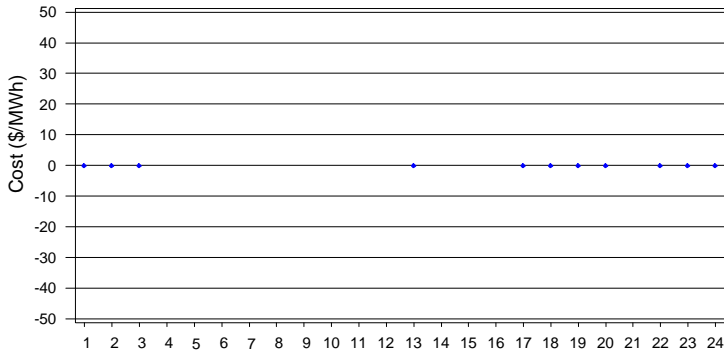
| | NP15 | | | SP15 | | | ZP26 | | | PG&E | | | SCE | | | SDGE | | |
|------------|-------|-------|-------|-------|-------|-------|-------|-------|-------|-------|-------|-------|-------|-------|-------|-------|-------|-------|
| | Max | Mean | Min | Max | Mean | Min | Max | Mean | Min | Max | Mean | Min | Max | Mean | Min | Max | Mean | Min |
| OFF | 28.56 | 22.58 | 17.51 | 27.09 | 21.14 | 16.42 | 27.41 | 21.70 | 16.89 | 29.34 | 23.16 | 17.94 | 27.94 | 21.75 | 16.88 | 27.90 | 21.72 | 16.91 |
| ON | 36.75 | 30.65 | 25.24 | 35.75 | 29.44 | 23.51 | 35.88 | 29.70 | 24.24 | 38.28 | 31.79 | 25.92 | 37.14 | 30.54 | 24.23 | 37.63 | 30.78 | 24.23 |

Selected Inter-Tie Congestion Costs

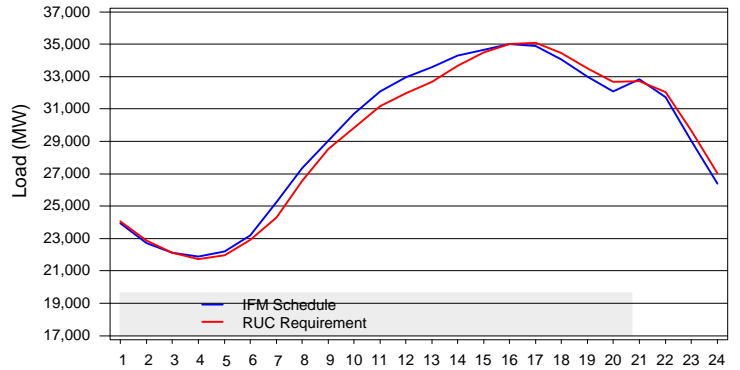
No Inter_Tie Congestion

The information contained in this report is preliminary, subject to change without notice. No inference, decision, or conclusion should be made based on the information in this report or any series of these reports. Any questions regarding this report should be directed to CAISO Market Services.

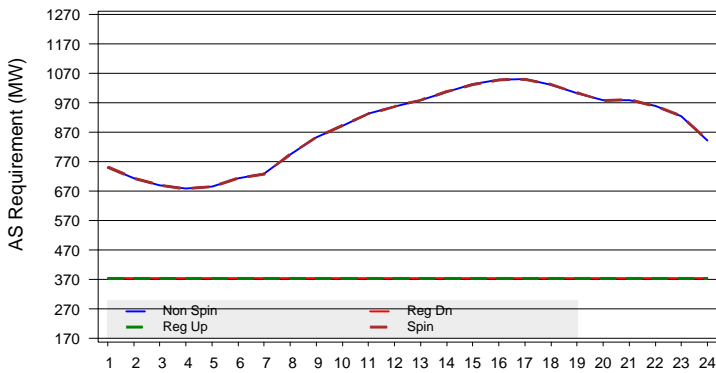
RUC Cost to Underscheduled Load



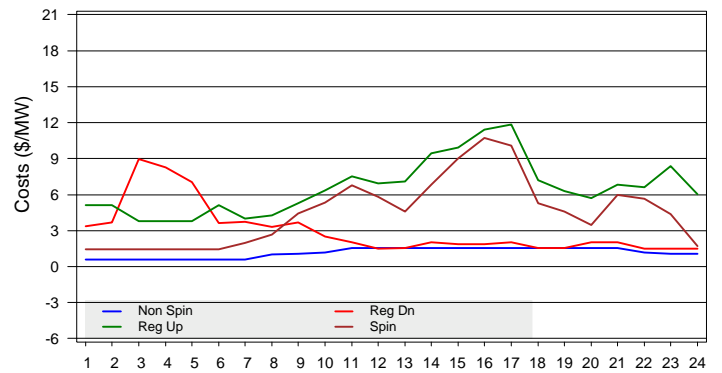
Cleared Quantity and RUC Requirements



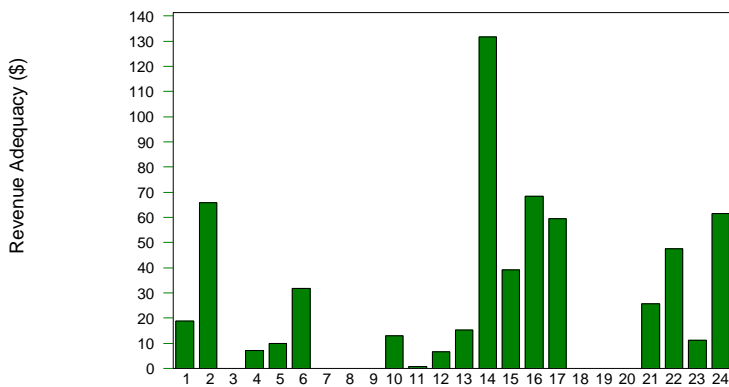
A/S System Requirement



Average A/S Costs



CRR Revenue Adequacy



CRR Statistics

| | 26JUN2009 | Cumulative |
|-----------------|------------|----------------|
| CONGESTION RENT | \$2,954.18 | \$4,224,756.09 |
| CRR PAYMENT | \$2,340.00 | \$4,269,381.16 |
| CRR ADEQUACY | \$614.18 | \$-44,625.07 |
| ADEQUACY RATIO | 126.25% | 98.95% |