

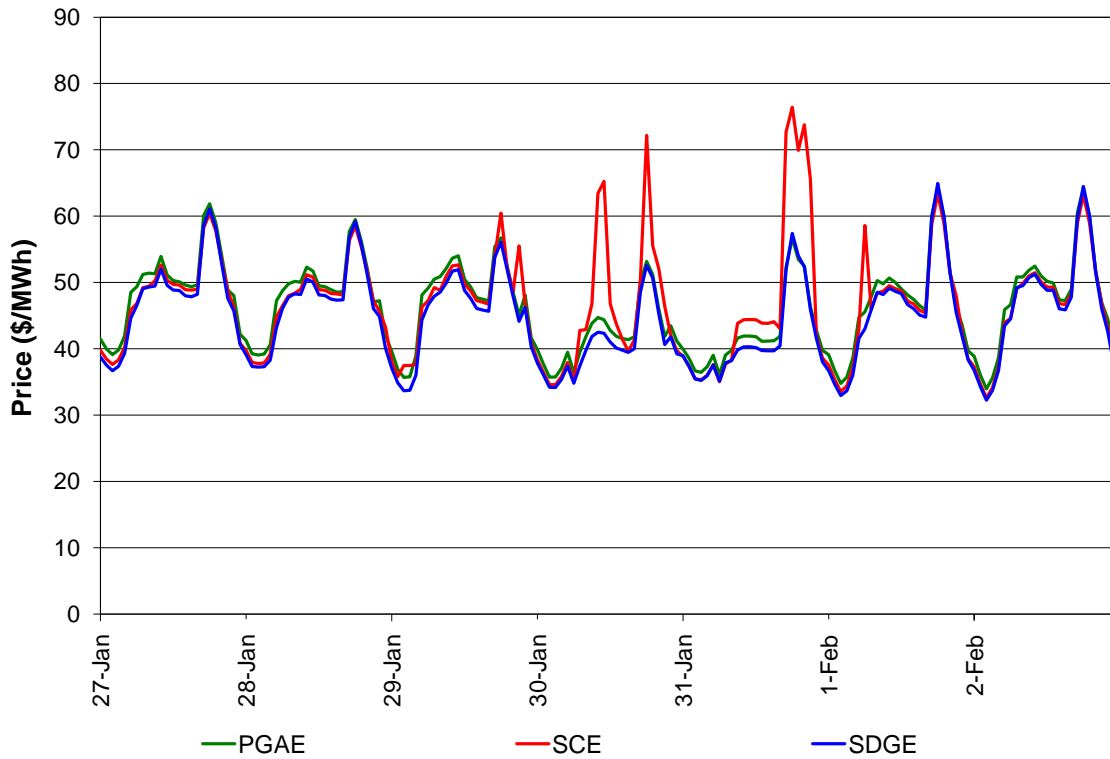
## Market Highlights<sup>1</sup> (January 27 – February 2)

- The average IFM DLAP LMP was \$45.92. The minimum and maximum LMPs were \$32.23 and \$76.44, respectively.
- The top three inter-ties congested in the IFM market were Palo Verde, Mead and IID-SCE. Congestion in this week was \$3.45 million.
- The average DA A/S prices were between \$0.23 and \$16.46.
- Approximately 95.43 percent of RUC requirement was met from RA units.
- The average real-time DLAP LMP was \$43.42, with minimum LMP of -\$35.76 and maximum LMP of \$993.68.
- Out of the total 2,016 five-minute intervals, 5 intervals saw DLAP prices above \$250 and 10 intervals saw prices below -\$30.

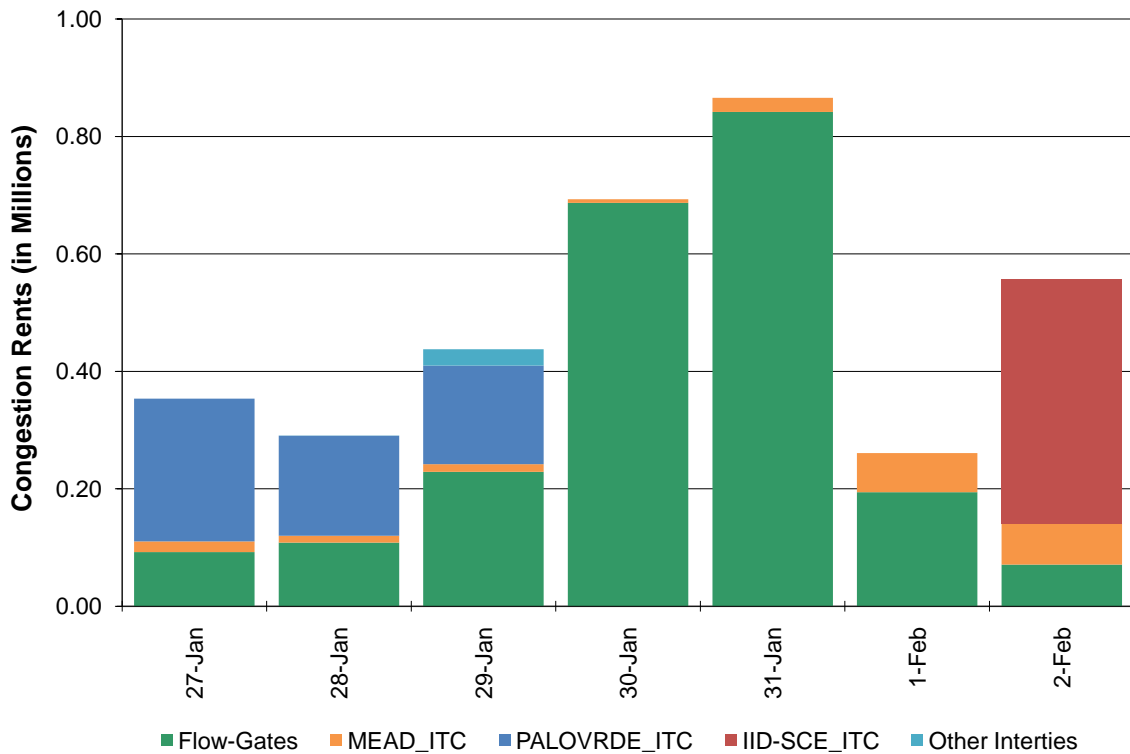
---

<sup>1</sup> A description of the metrics presented in this report is available at <http://www.caiso.com/205c/205cb4c74bc40.html>

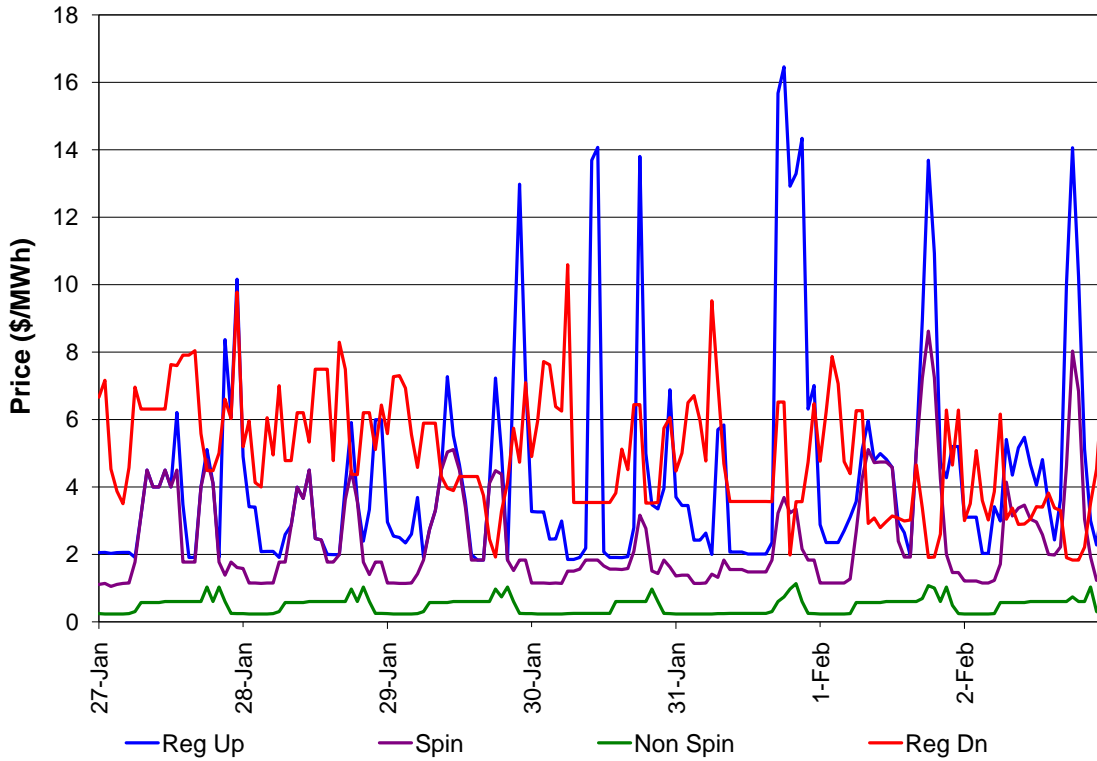
**Figure 1: Day-Ahead (IFM) LAP LMP**



**Figure 2: Day-Ahead Congestion Rents**



**Figure 3: Day-Ahead (IFM) Average A/S Price**



**Figure 4: Day-Ahead Average RUC Price**

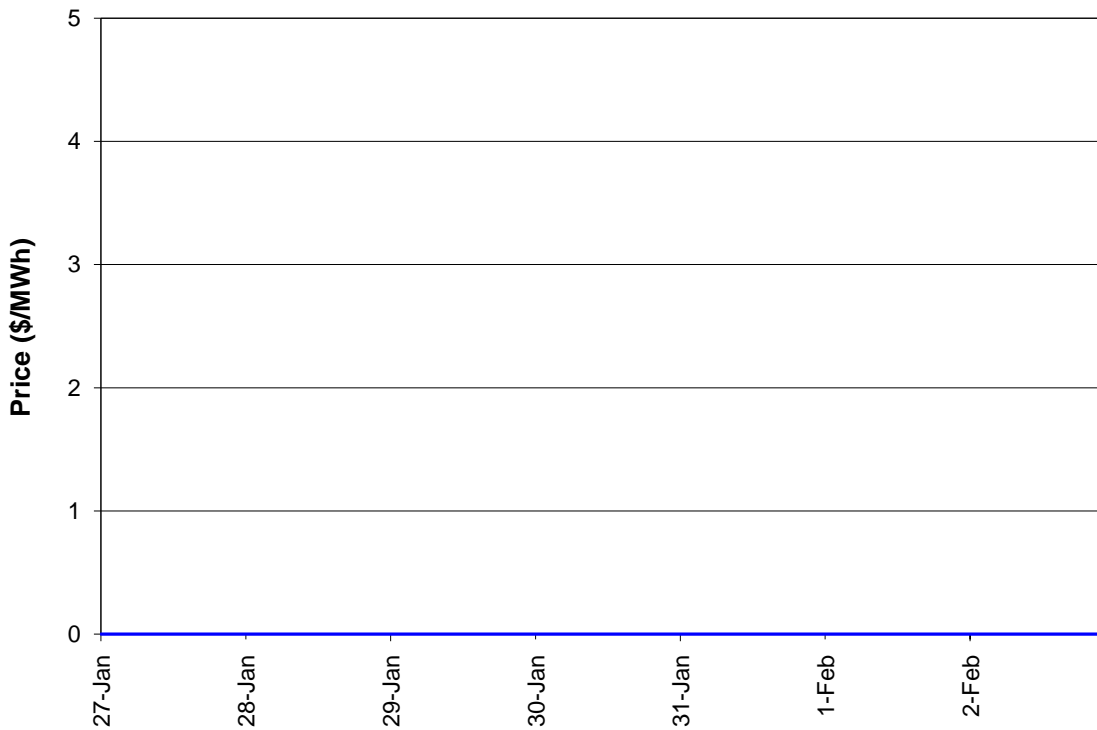


Figure 5: Real-Time (RTPD) Average A/S Price

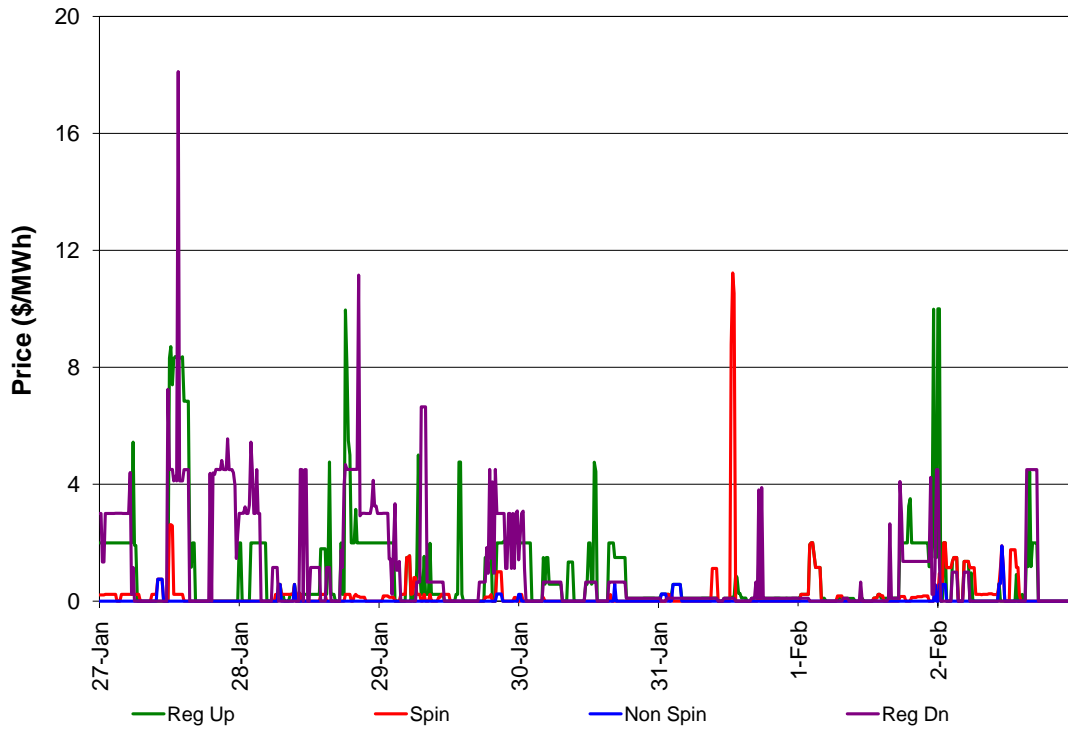


Figure 6: Real-Time (RTD) LAP LMP

