

Market Highlights¹ (February 10 – February 16)

- The average IFM DLAP LMP was \$45.52. The minimum and maximum LMPs were \$27.74 and \$73.59, respectively.
- The inter-ties congested in the IFM market were Mead and Palo Verde. Congestion rent in this week was \$2.16 million.
- The average DA A/S prices were between \$0.23 and \$20.48.
- Approximately 97.76 percent of RUC requirement was met from RA units.
- The average real-time DLAP LMP was \$48.13, with minimum LMP of -\$35.6 and maximum LMP of \$2500.
- Out of the total 2,016 five-minute intervals, 44 intervals saw DLAP prices above \$250 and 12 intervals saw prices below -\$30.

¹ A description of the metrics presented in this report is available at <http://www.caiso.com/205c/205cb4c74bc40.html>

Figure 1: Day-Ahead (IFM) LAP LMP

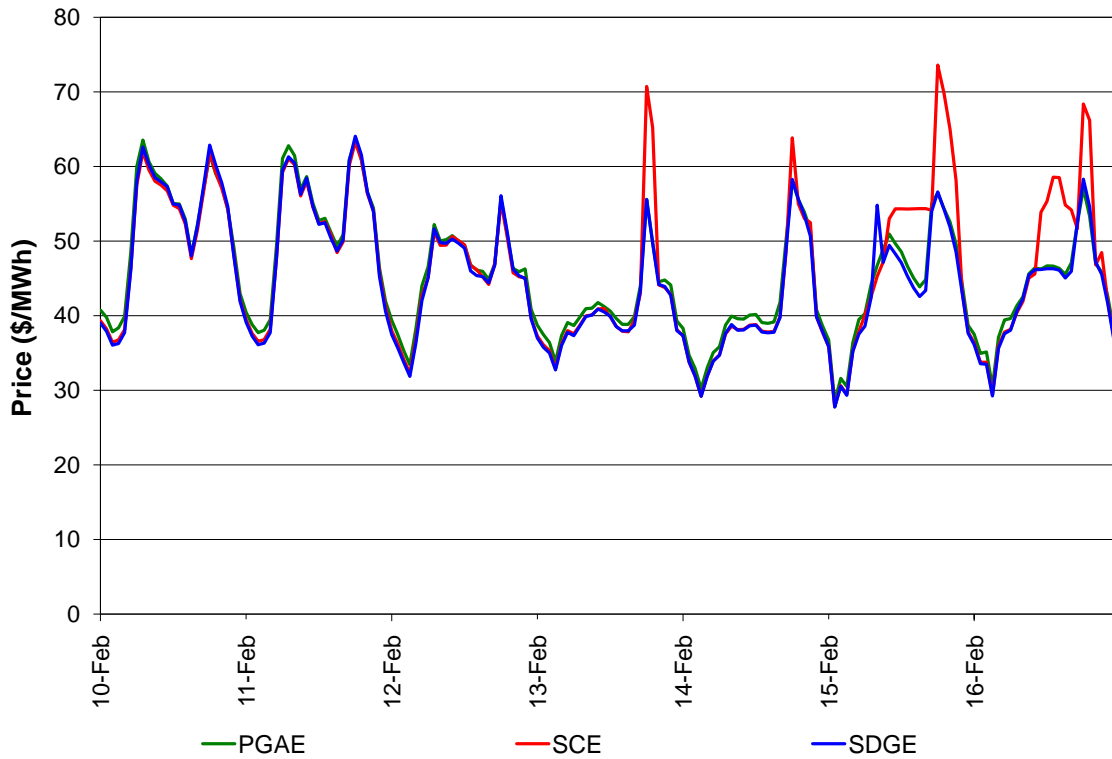


Figure 2: Day-Ahead Congestion Rents

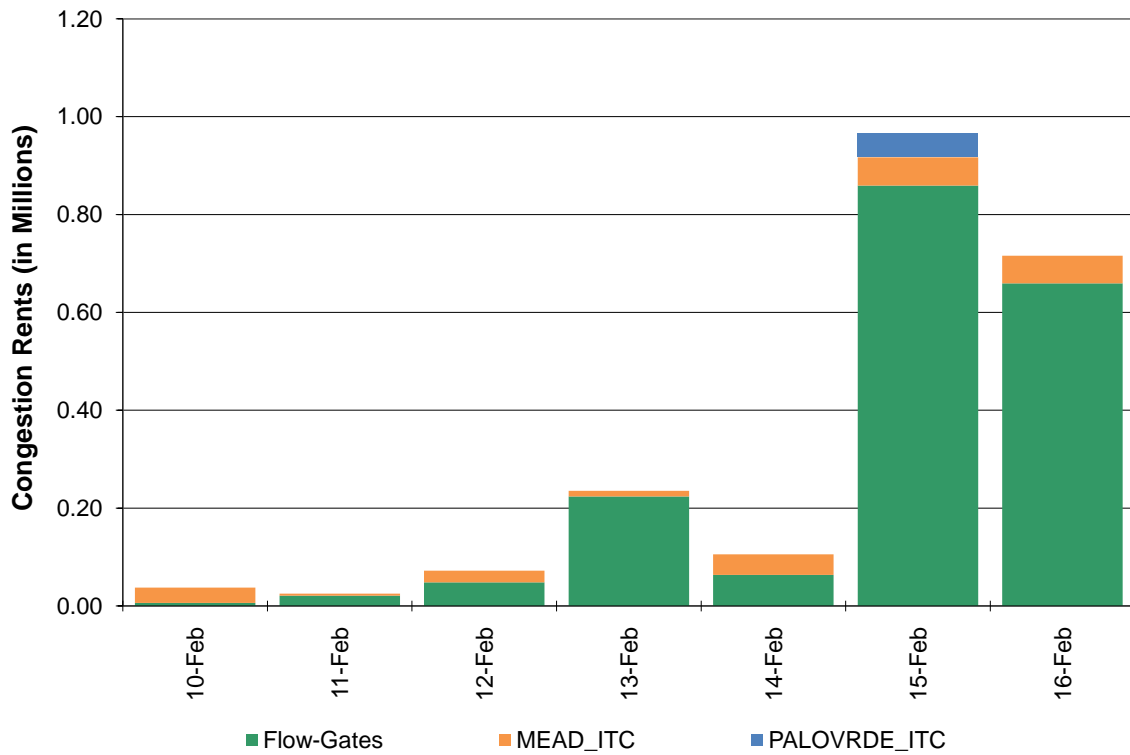


Figure 3: Day-Ahead (IFM) Average A/S Price

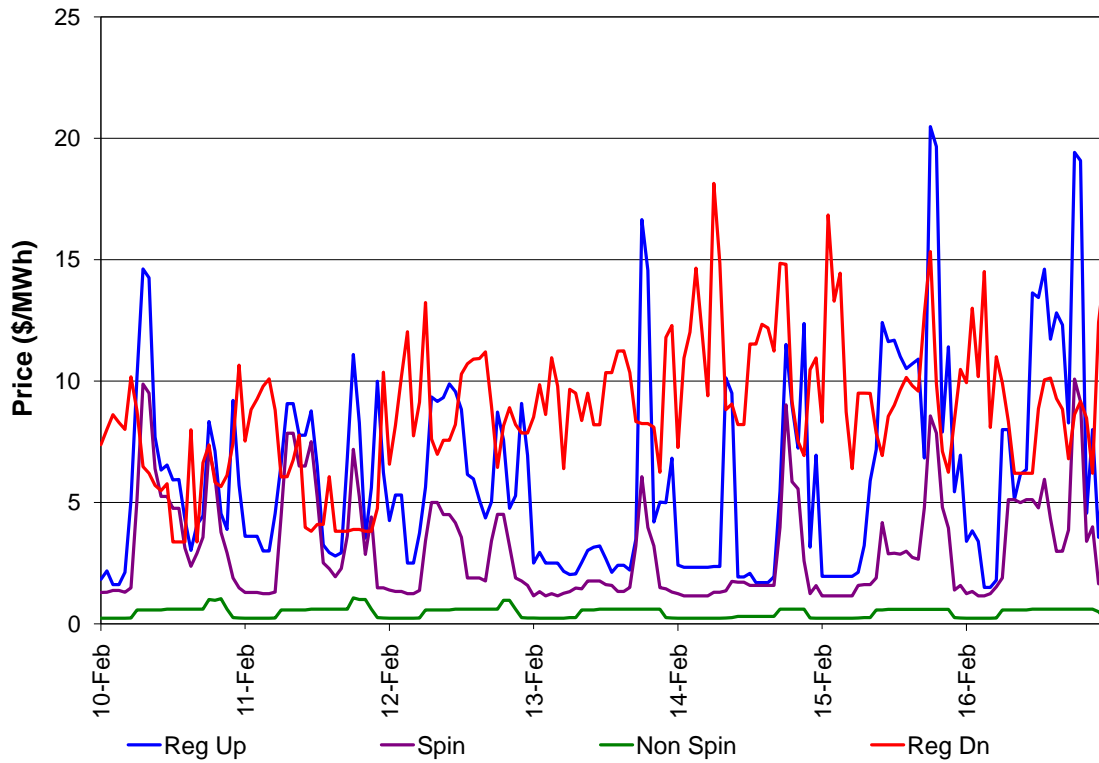


Figure 4: Day-Ahead Average RUC Price

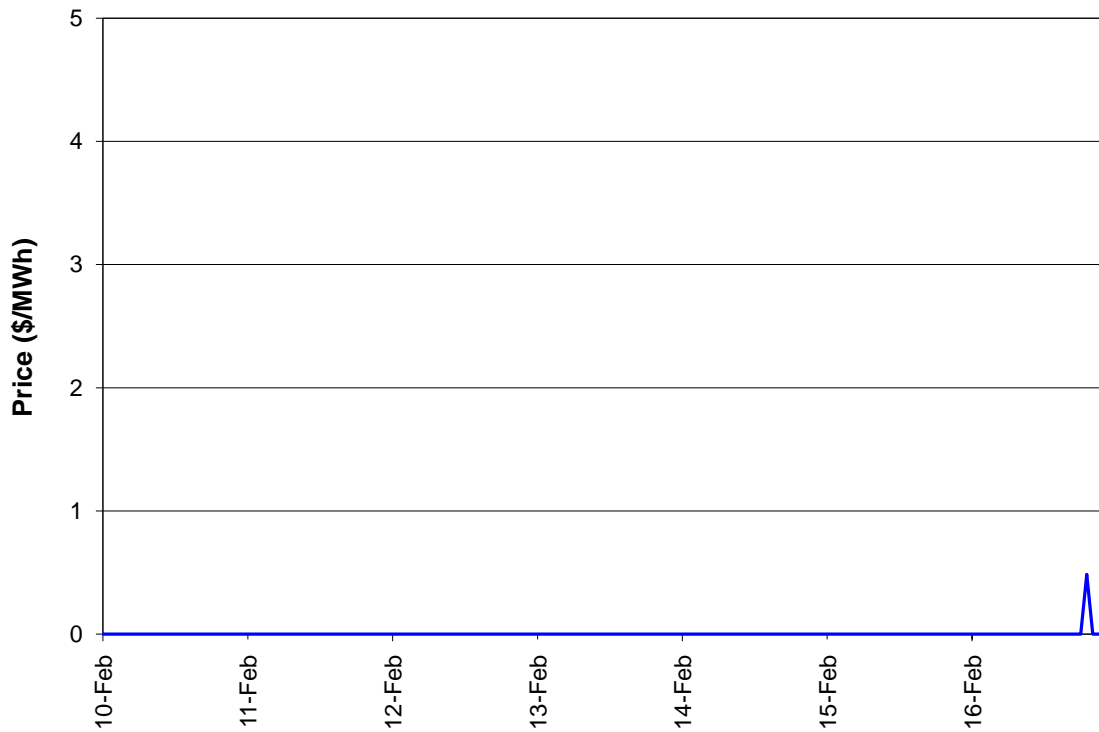


Figure 5: Real-Time (RTPD) Average A/S Price

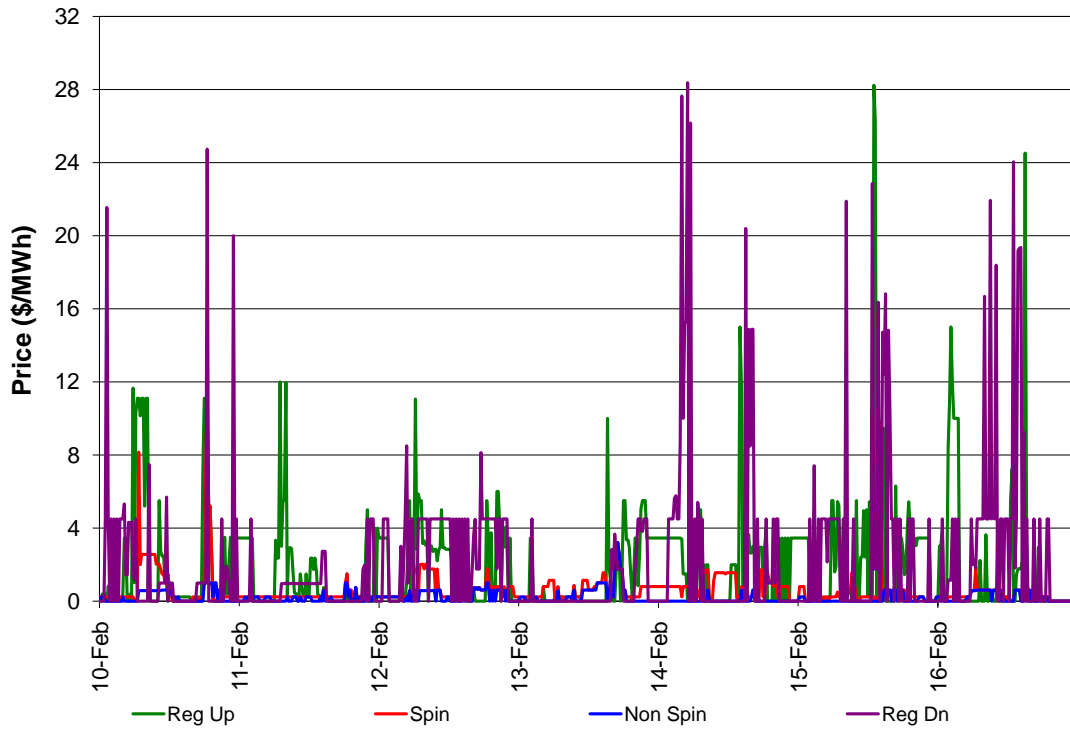


Figure 6: Real-Time (RTD) LAP LMP

