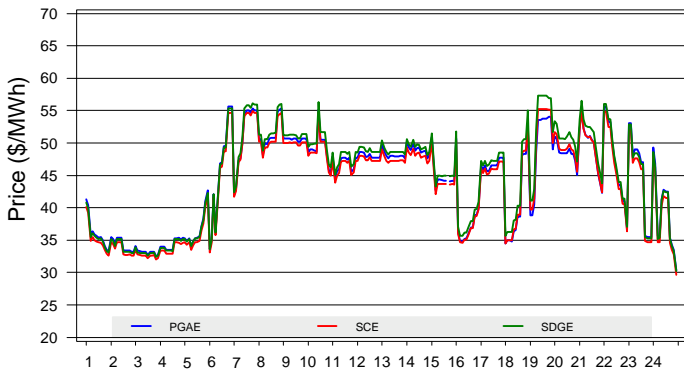


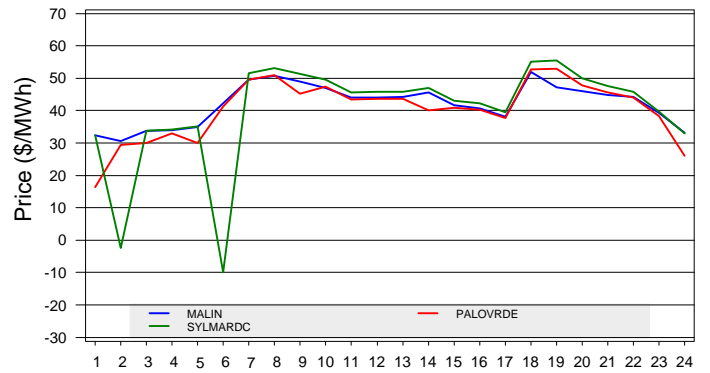
The information contained in this report is preliminary, subject to change without notice. No inference, decision, or conclusion should be made based on the information in this report or any series of these reports. Any questions regarding this report should be directed to CAISO Market Services.

(Note: An explanation of all metrics is available in the Real-Time Daily Market Watch Metric Catalog at <http://www.caiso.com/2426/2426bf61d950.html>)

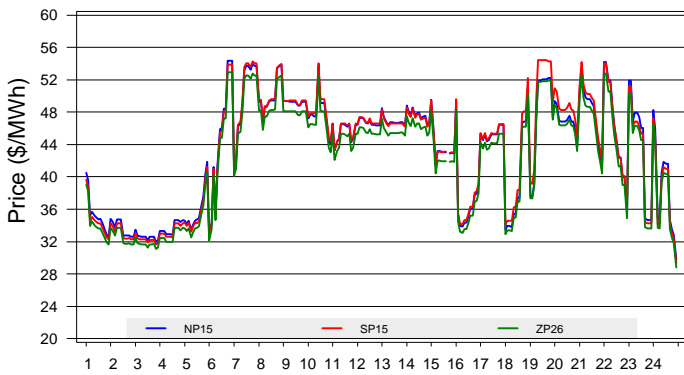
Default LAP LMPs



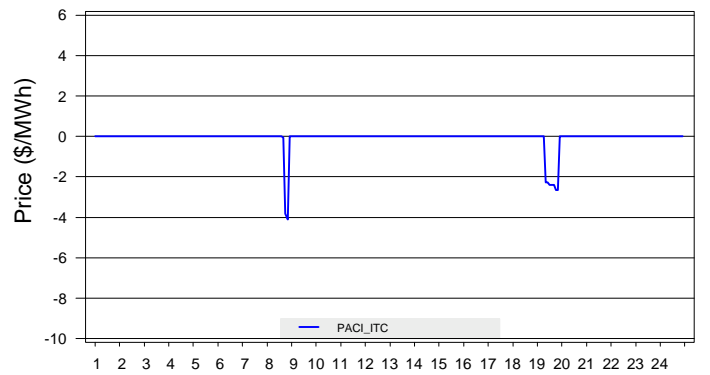
Hourly Average LMPs of Selected Inter-Ties (HASP DATA)



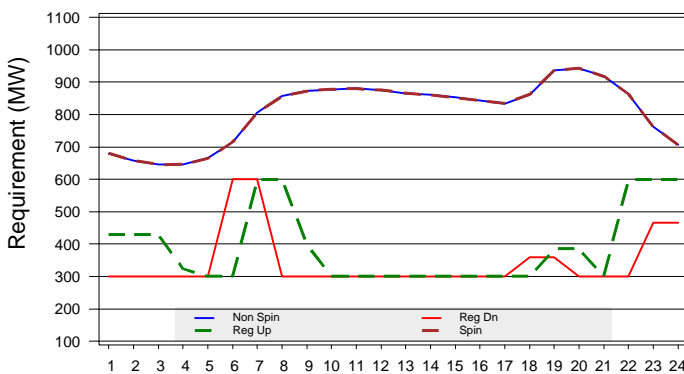
Trading Hub LMPs



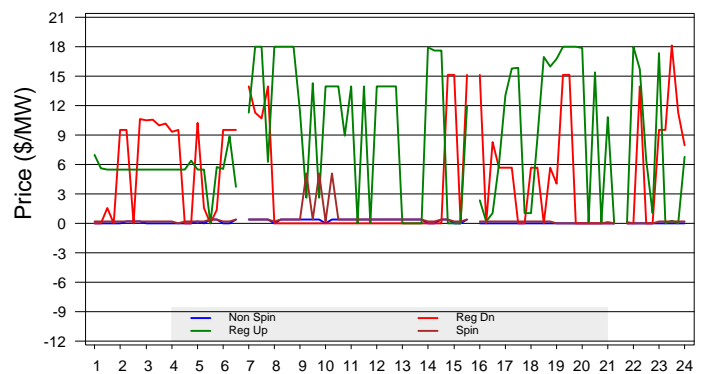
Selected Inter-Tie Shadow Prices



A/S Requirements



Average A/S Price



LMP Statistics for On and Off-Peak Hours (\$/MWh)

	NP15			SP15			ZP26			PG&E			SCE			SDGE		
	Max	Mean	Min	Max	Mean	Min	Max	Mean	Min	Max	Mean	Min	Max	Mean	Min	Max	Mean	Min
OFF	54.34	37.26	29.73	53.90	36.79	29.33	52.94	36.15	28.82	55.60	38.02	30.32	54.64	37.24	29.69	55.35	37.80	30.20
ON	54.20	46.14	33.45	54.46	46.54	34.07	52.76	45.15	32.91	55.67	47.44	34.45	55.28	47.17	34.51	57.36	48.52	35.63