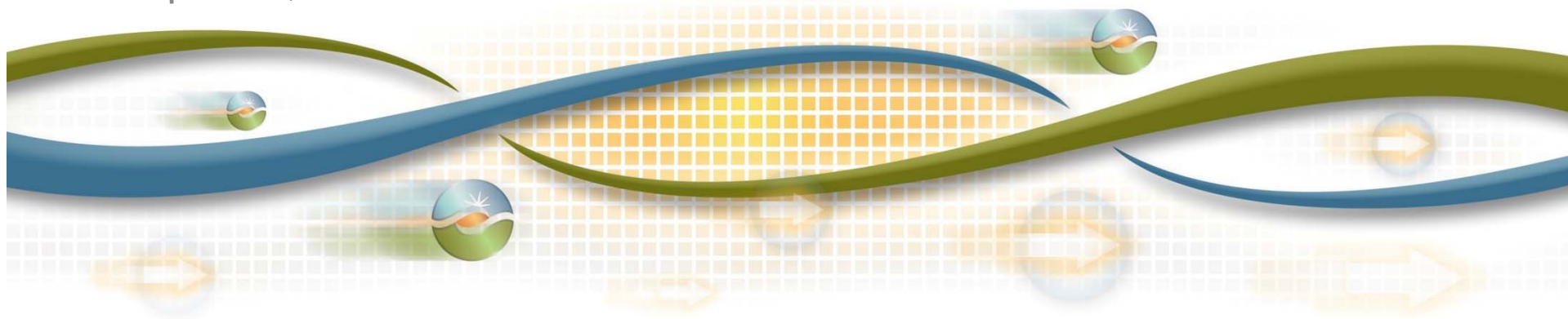




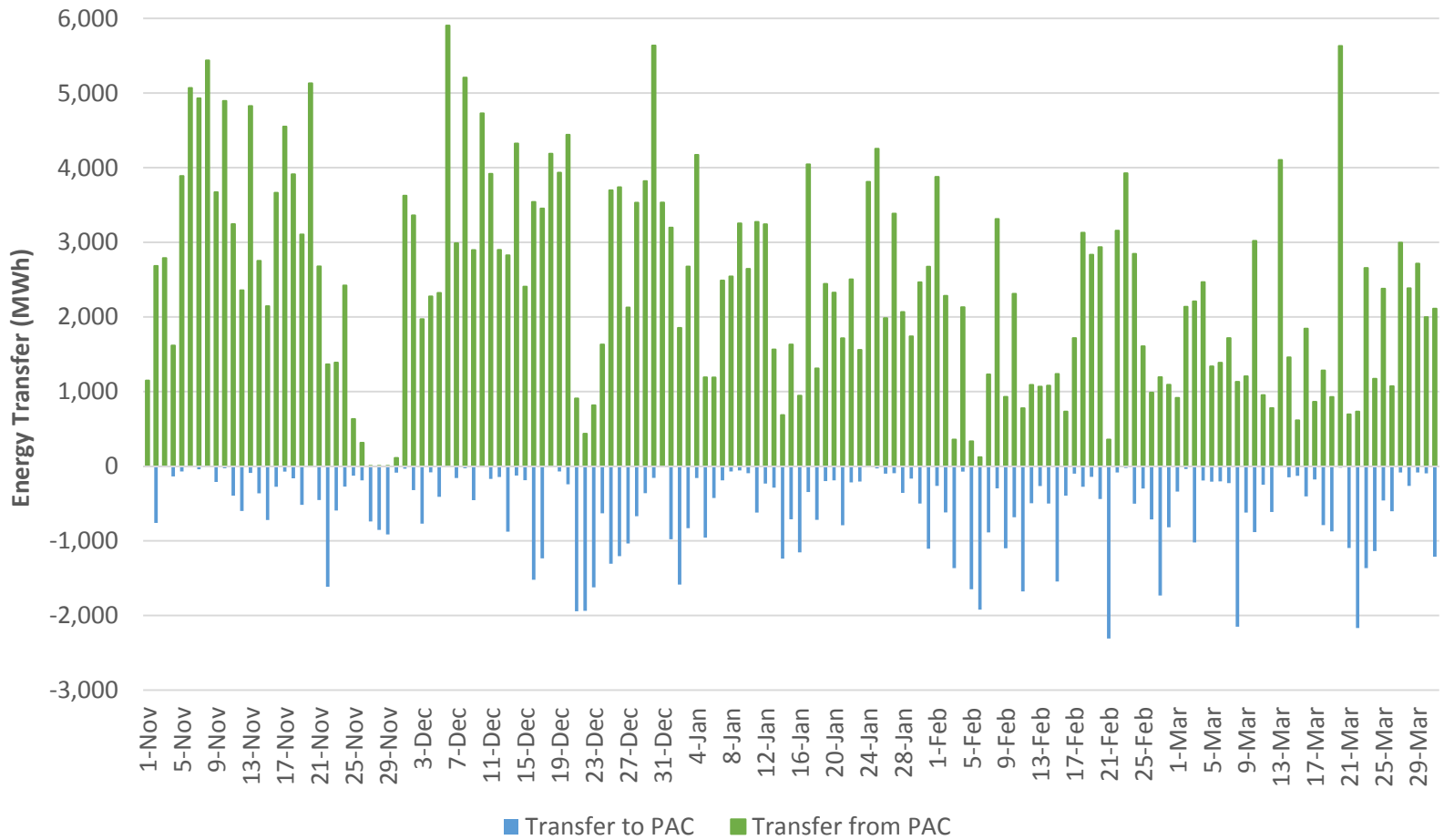
Discussion on Energy Imbalance Market Pricing

Guillermo Bautista Alderete, Ph. D.
Market Quality and Renewable Integration

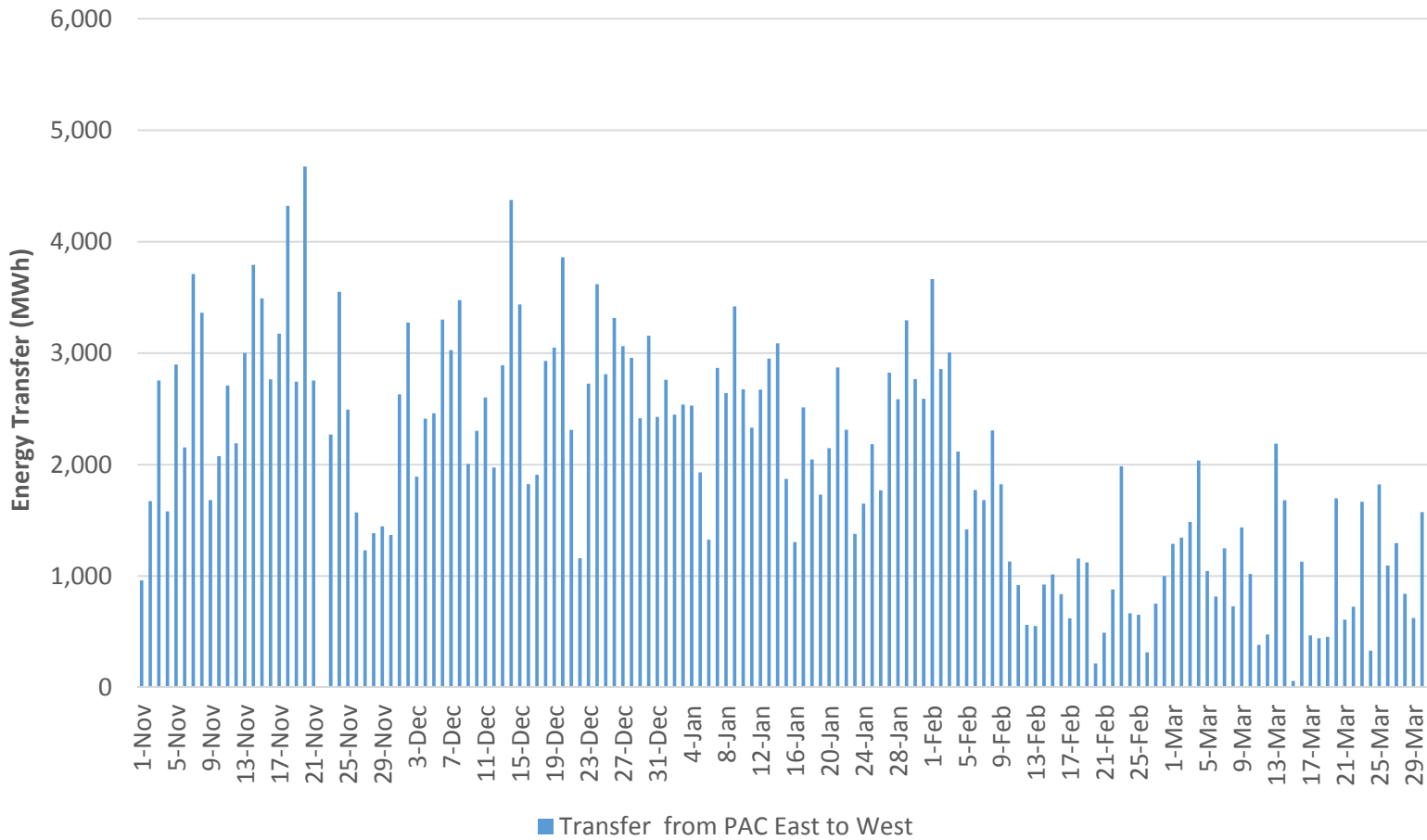
Market Surveillance Committee meeting
General session
April 17, 2015



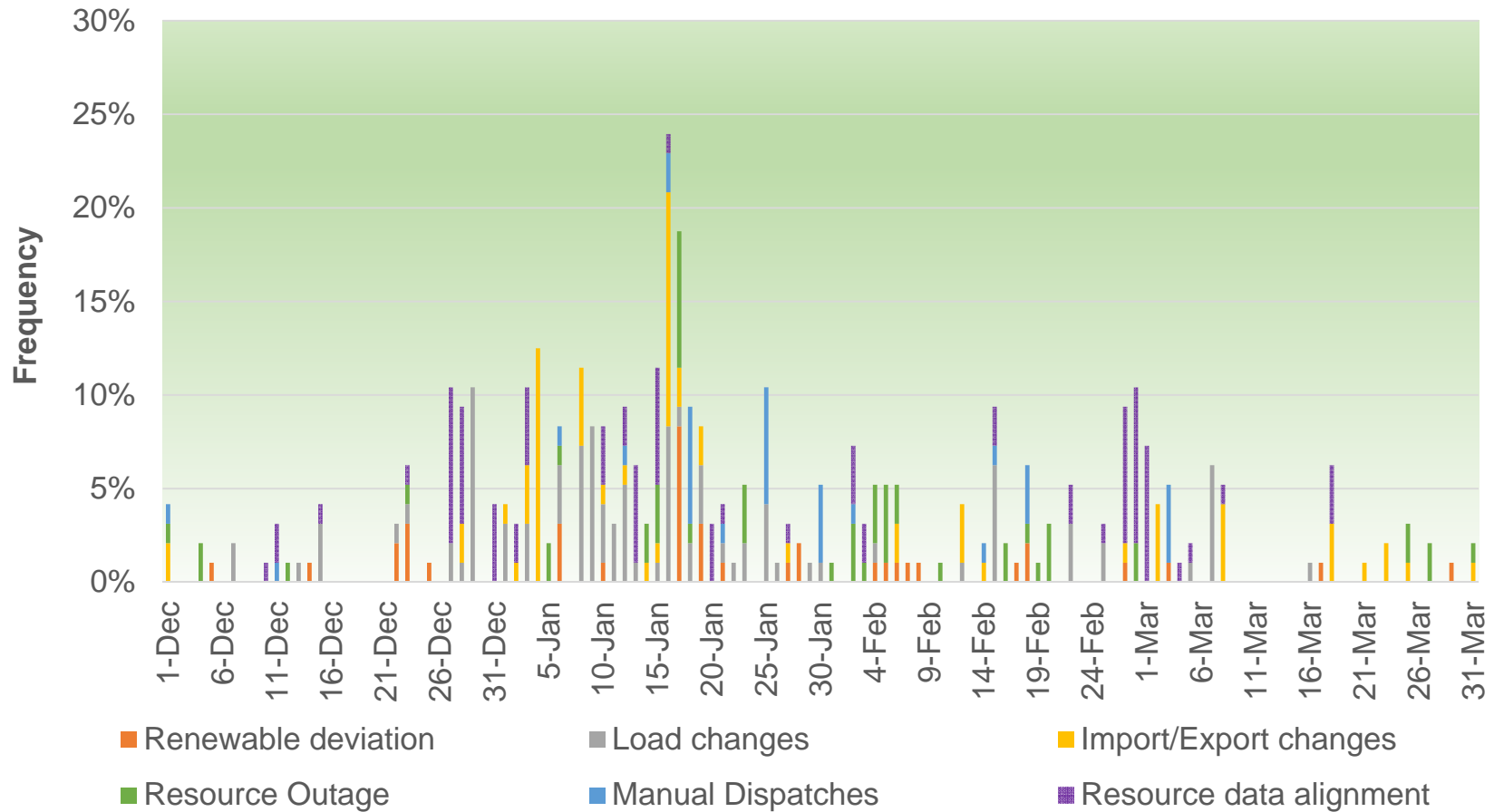
EIM transfer between PAC and ISO



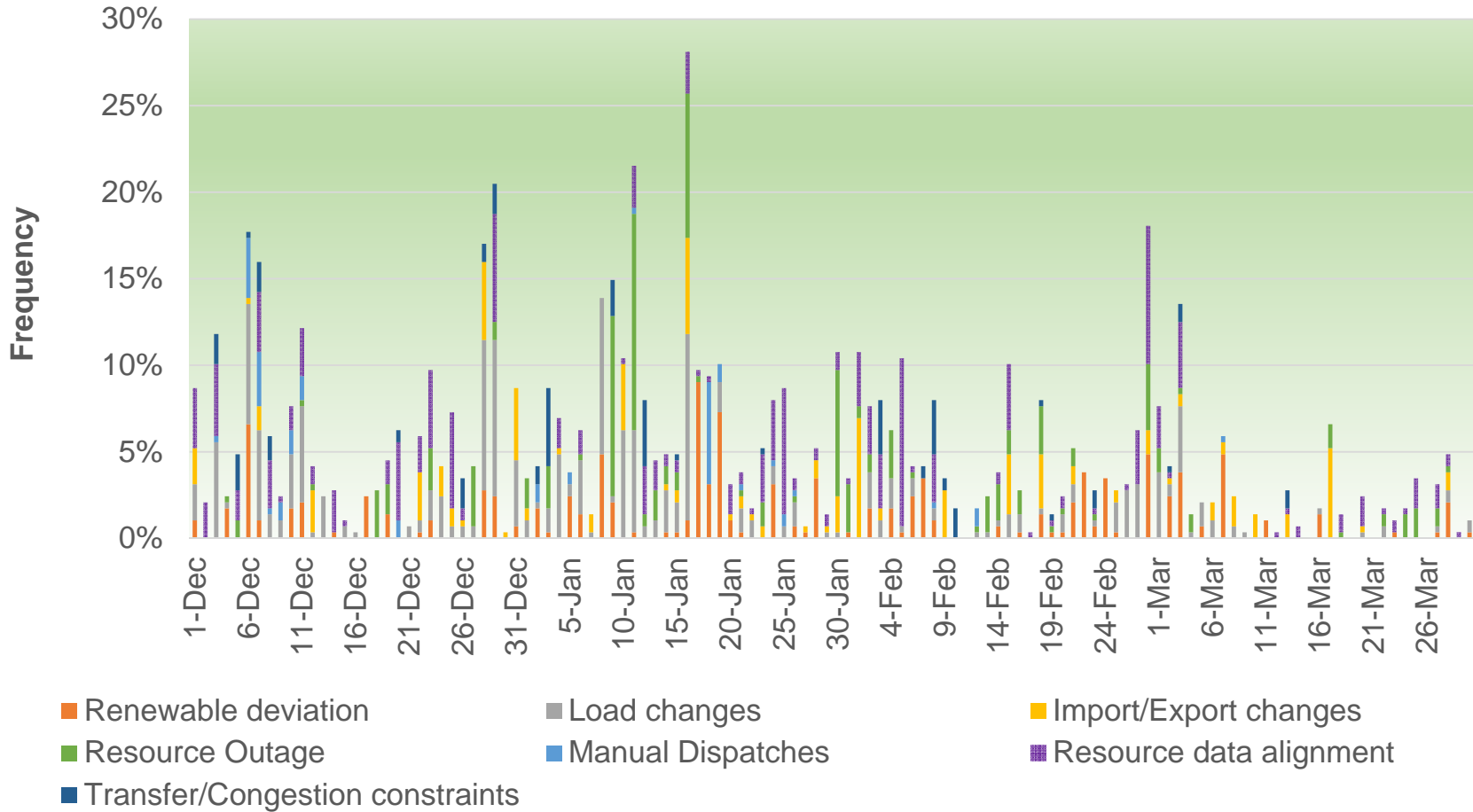
EIM transfer from PAC East



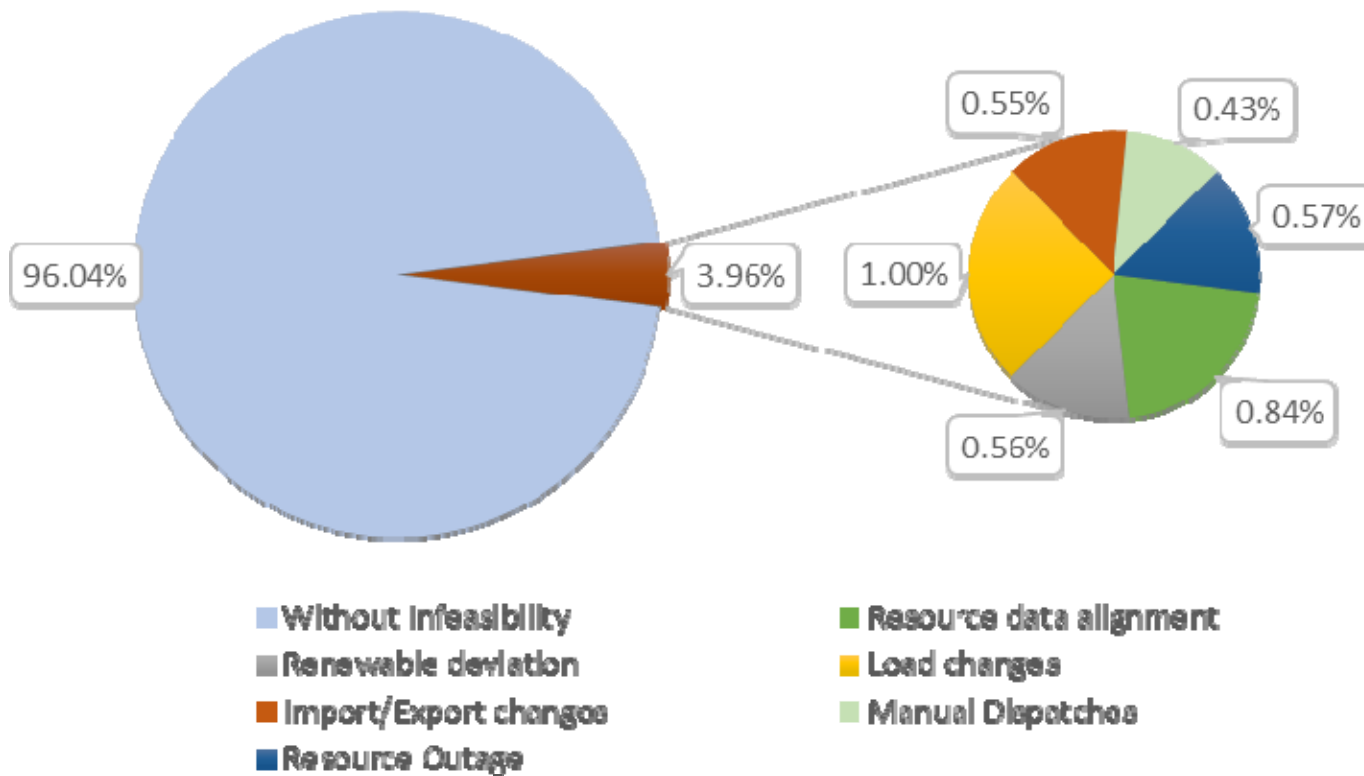
Frequency with which each category triggered parameter pricing in the fifteen minute market for December 1 through March 31 (PACE and PACW combined)



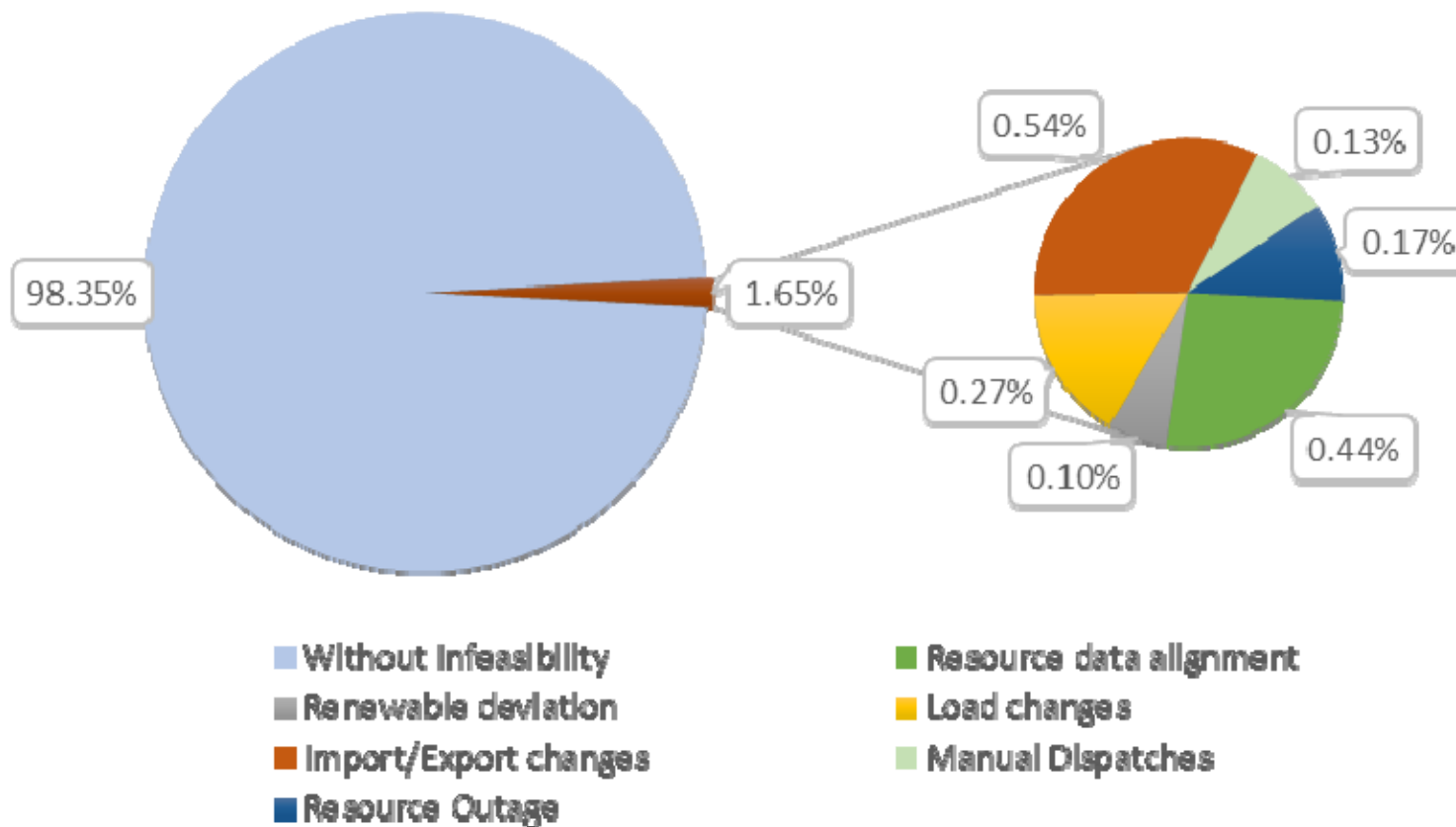
Undersupply infeasibility in five minute market for December 1 through March 31 (PACE and PACW combined)



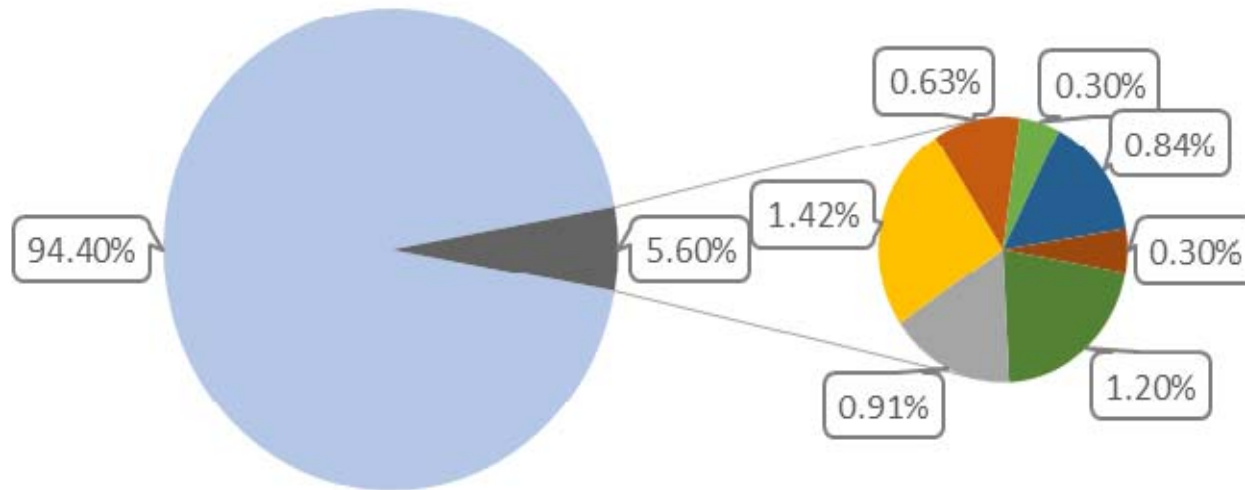
Frequency of under-gen infeasibility in fifteen minute market for November 2014- February 2015



Frequency of under-gen infeasibility in fifteen minute market for March 2015

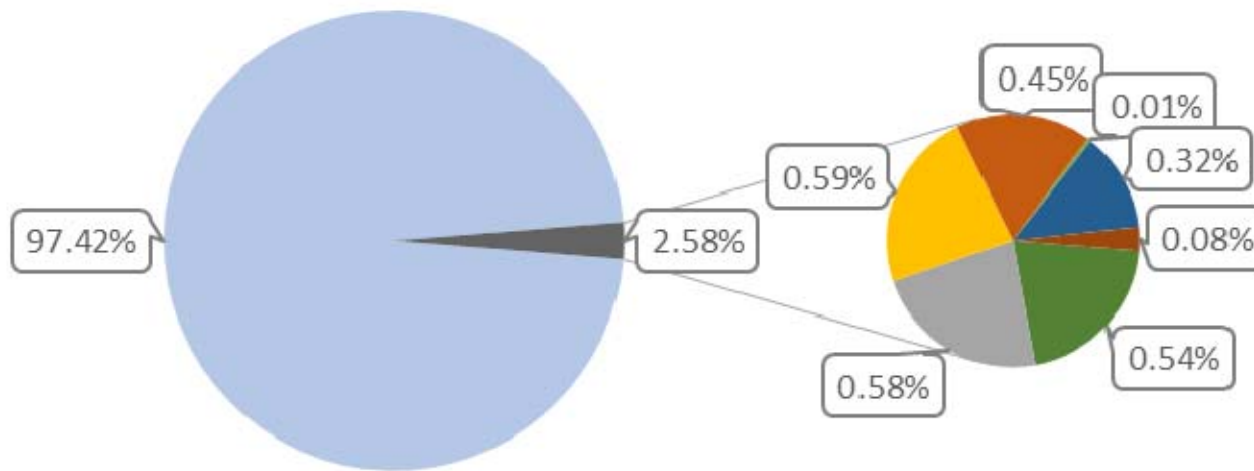


Frequency of under-gen infeasibility in five minute market for November 2014- February 2015



- Without Infeasibilities
- Resource data alignment
- Renewable deviation
- Load changes
- Import/Export changes
- Manual Dispatches
- Resource Outage
- Transfer/Congestion Constraint

Frequency of under-gen infeasibility in five minute market for March 2015



- Without Infeasibilities
- Load changes
- Resource Outage
- Resource data alignment
- Import/Export changes
- Transfer/Congestion Constraint
- Renewable deviation
- Manual Dispatches



Thanks