

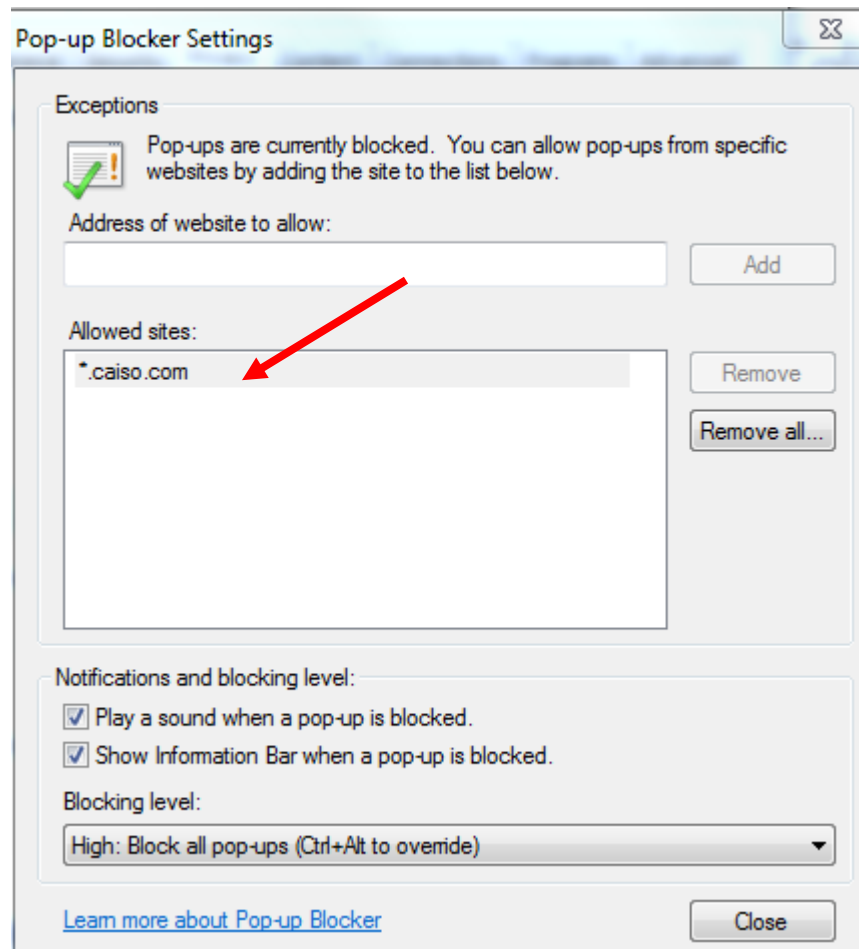
OASIS 6.x User-Interface Application Release
August 29, 2014

Frequently Asked Questions

A) If any of the following messages/issues are encountered below:

1. When accessing OASIS at <http://oasis.caiso.com> or <http://oasis.caiso.com/mrioasis>, windows are flashing and disappears, and no error messages are displayed.
2. Message appears as:
Opening Application In New Window...
This Window Should Close Automatically

Resolution: Add ***.caiso.com** as an allowed site under the browser Pop-up Blocker Settings.
(Tools/Internet Options/Privacy tab/Pop-Up Blocker Settings).



If the user still cannot access OASIS, we suggest to *“Reset”* the user’s machine’s Internet Explorer settings to default settings (Tools/Internet Options/Advanced/Reset); yet please **consult/check with your administrator first** if this is allowed in your organization.



The user must see the following home page screen, if the application is accessed successfully.

California ISO | OASIS

ATLAS | REPORT | PRICES | TRANSMISSION | SYSTEM DEMAND | ENERGY | ANCLLARY SERVICES | CONGESTION REVENUE RIGHTS | PUBLIC BIDS

Welcome to the California ISO Open Access Same-time Information System (OASIS) site. On OASIS you will find real-time data related to the ISO transmission system and its Market, such as system demand forecasts, transmission outage and capacity status, market prices and market result data.

Standards Information
 North American Energy Standards Board (NAESB)
 ISO Business Practice Models
 Available Transfer Capability Information

OASIS History
 This site contains reports from April 1, 2009 to the current trading day
 Access prior trading day at
 Trading Dates 01/12/000 - 3/31/2009
 Trading Dates 3/31/1998 - 8/31/2008

System Help
 For interface technical specifications, product release plans and other supporting documents go to:
 System Technical Information
 Support

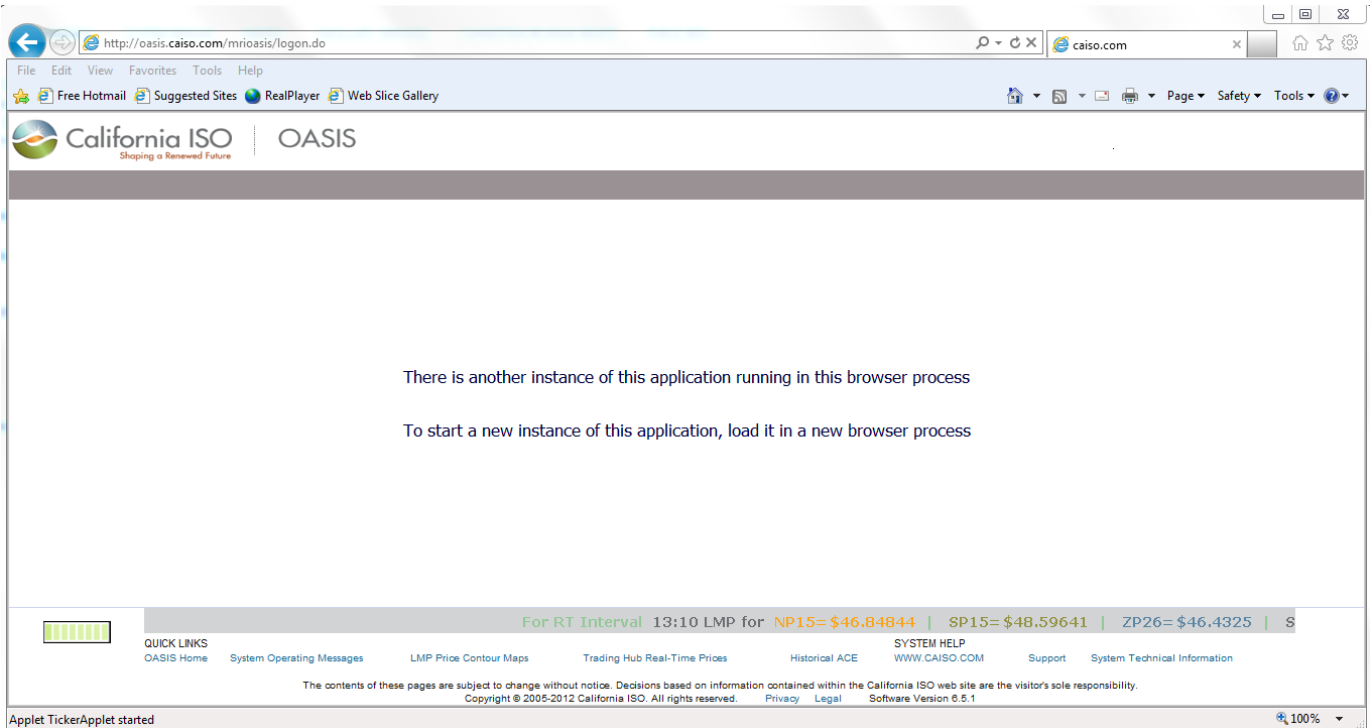
Other OASIS sites

CONNECTED | For PJM, PJM Real-time LMP for NP15 = \$34.79532 | ZP26 = \$34.62267 | SP15 = \$33.94965 | SMC = \$35.96012

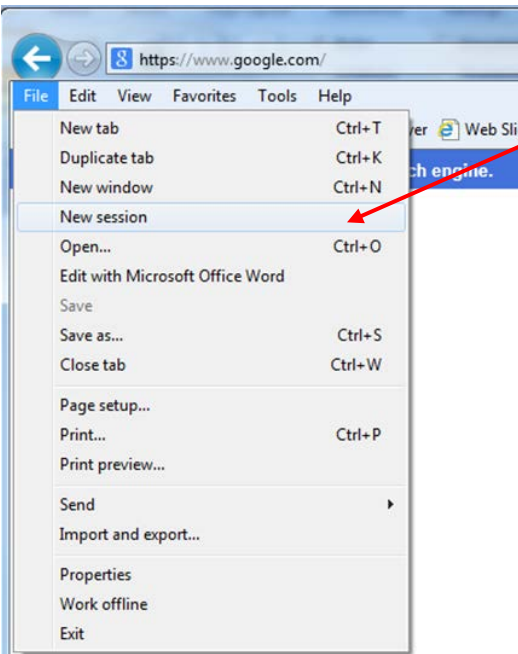
QUICK LINKS: OASIS Home, System Operating Messages, LMP Price Contour Maps, Trading Hub Real-Time Prices, SYSTEM HELP: WWW.CAISO.COM, Support, System Technical Information

The contents of these pages are subject to change without notice. Decisions based on information contained within the California ISO web site are the visitor's sole responsibility.
 Copyright © 2009-2012 California ISO. All rights reserved. Privacy | Legal | Software Version 6.2.0

B) User gets “There is another instance of this application running this browser process” even though OASIS is not open.





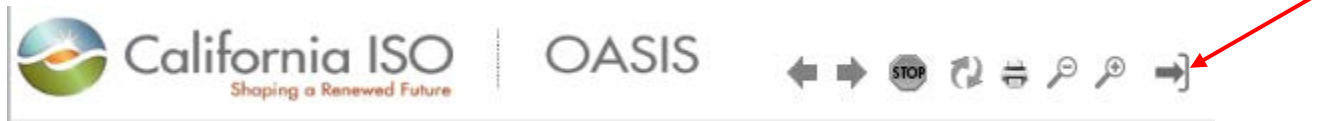
1) From the internet explorer browser menu, open-up a “**New Session**”



2) On the new session window, enter the URL: <http://oasis.caiso.com>



- 3) It is recommended to close-out the OASIS application by using the “Close Application” icon  instead of the Internet Explorer close window  icon, to properly end your user application session. This will avoid encountering the message indicating another instance is still running, the next time the OASIS application is accessed.



- C) For more information regarding the icons available on the new graphical user-interface, please refer to:
http://www.caiso.com/Documents/OASIS-6_2_0-GuideSheet.pdf

- D) Supported browser: Internet Explorer version 9