



California ISO

# Application Delivery Resiliency Forum

January 31, 2024

# Agenda

- Overview
- Status & Timeline
- Actions Required
- Support
- User Interface
- Application Programming Interface
- Global Rate Limiting & Acceptable Use Policy
- Next Steps
- References

# Overview

- Dedicated forum with increased focus on ADR to continue to engage with and support customers thru the Production Transition to new User Interface (UI) and Application Programming Interface (API) URLs, IP addresses, and infrastructure, including associated Acceptable Use Policy (AUP) updates
- Weekly on Wednesdays 1400-1500 PT starting, January 24, 2024
  - <https://caiso.webex.com/caiso/j.php?MTID=ma49ce28a3ddca64e2d501f899778f620>
  - Presentations & Recordings:  
<https://www.caiso.com/informed/Pages/ReleasePlanning/Default.aspx#Independent2024>
- Increase awareness of ADR implementation/cutover status and timelines
- Provide guidance for users on their transitions to the new URLs
- Communicate known issues as applicable
- Review user feedback

# Status & Timeline

- UI:
  - All new URLs (except TR) available now
  - Old URLs to be decommissioned 2/6/24
- API:
  - All new URLs available now
  - Old URLs to be cutover TBD (was 2/19/24 tentatively)

# Status & Timeline

System	UI - New	UI - Old	API - New	API - Old
BAAOP	<a href="https://baaop.caiso.com">https://baaop.caiso.com</a>		<a href="https://ws.prod.caiso.com/sst/baaop">https://ws.prod.caiso.com/sst/baaop</a>	<a href="https://ws.caiso.com/sst/baaop">https://ws.caiso.com/sst/baaop</a>
BSAP	<a href="https://bsap.caiso.com">https://bsap.caiso.com</a>		<a href="https://ws.prod.caiso.com/sst/bsap">https://ws.prod.caiso.com/sst/bsap</a>	<a href="https://ws.caiso.com/sst/bsap">https://ws.caiso.com/sst/bsap</a>
CIRA	<a href="https://cira.caiso.com">https://cira.caiso.com</a>	NA - Cutover	<a href="https://ws.prod.caiso.com/sst/cira">https://ws.prod.caiso.com/sst/cira</a>	<a href="https://ws.caiso.com/sst/cira">https://ws.caiso.com/sst/cira</a>
CMRI	<a href="https://cmri.caiso.com">https://cmri.caiso.com</a>		<a href="https://ws.prod.caiso.com/sst/cmri">https://ws.prod.caiso.com/sst/cmri</a>	<a href="https://ws.caiso.com/sst/cmri">https://ws.caiso.com/sst/cmri</a>
DRRS	<a href="https://drrs.caiso.com">https://drrs.caiso.com</a>	NA - Cutover	<a href="https://ws.prod.caiso.com/sst/drrs">https://ws.prod.caiso.com/sst/drrs</a>	<a href="https://ws.caiso.com/sst/drrs">https://ws.caiso.com/sst/drrs</a>
EIDE	NA	NA	<a href="https://ws.prod.caiso.com/sst/eide">https://ws.prod.caiso.com/sst/eide</a>	<a href="https://ws.caiso.com/sst/eide">https://ws.caiso.com/sst/eide</a>
ALFS (& FDR)	NA	NA	<a href="https://ws.prod.caiso.com/sst/runtime.asvc">https://ws.prod.caiso.com/sst/runtime.asvc</a>	<a href="https://ws.caiso.com/sst/runtime.asvc">https://ws.caiso.com/sst/runtime.asvc</a>
MF	<a href="https://mf.caiso.com">https://mf.caiso.com</a>		<a href="https://ws.prod.caiso.com/sst/runtime.asvc">https://ws.prod.caiso.com/sst/runtime.asvc</a>	<a href="https://ws.caiso.com/sst/runtime.asvc">https://ws.caiso.com/sst/runtime.asvc</a>
PISOA	NA	NA	<a href="https://ws.prod.caiso.com/sst/runtime.asvc">https://ws.prod.caiso.com/sst/runtime.asvc</a>	<a href="https://ws.caiso.com/sst/runtime.asvc">https://ws.caiso.com/sst/runtime.asvc</a>
RCBSAP	<a href="https://rcbsap.caiso.com">https://rcbsap.caiso.com</a>		<a href="https://ws.prod.caiso.com/sst/rcbsap">https://ws.prod.caiso.com/sst/rcbsap</a>	<a href="https://ws.caiso.com/sst/rcbsap">https://ws.caiso.com/sst/rcbsap</a>
RCSERVICES (RCEIDE)	NA	NA	<a href="https://ws.prod.caiso.com/sst/rcservices">https://ws.prod.caiso.com/sst/rcservices</a>	<a href="https://ws.caiso.com/sst/rcservices">https://ws.caiso.com/sst/rcservices</a>
SIBR	<a href="https://sibr.caiso.com">https://sibr.caiso.com</a>		<a href="https://ws.prod.caiso.com/sst/sibr">https://ws.prod.caiso.com/sst/sibr</a>	<a href="https://ws.caiso.com/sst/sibr">https://ws.caiso.com/sst/sibr</a>
STLMT	<a href="https://stlmt.caiso.com">https://stlmt.caiso.com</a>	NA - Cutover	<a href="https://ws.prod.caiso.com/sst/stlmt">https://ws.prod.caiso.com/sst/stlmt</a>	<a href="https://ws.caiso.com/sst/stlmt">https://ws.caiso.com/sst/stlmt</a>
OMS	<a href="https://weboms.caiso.com">https://weboms.caiso.com</a>	NA - Cutover	<a href="https://ws.prod.caiso.com/sst/weboms">https://ws.prod.caiso.com/sst/weboms</a>	<a href="https://ws.caiso.com/sst/weboms">https://ws.caiso.com/sst/weboms</a>
ECIC	NA	NA	<a href="https://ws.prod.caiso.com/sst/ecic">https://ws.prod.caiso.com/sst/ecic</a>	<a href="https://ws.caiso.com/sst/ecic">https://ws.caiso.com/sst/ecic</a>
CRR	<a href="https://crr.caiso.com">https://crr.caiso.com</a>		NA	NA
PLC	<a href="https://plc.caiso.com/">https://plc.caiso.com/</a>		NA	NA
TR	<a href="https://tr.caiso.com">https://tr.caiso.com</a>	<a href="https://portal.caiso.com/tr">https://portal.caiso.com/tr</a>	NA	NA
ADS	<a href="https://ads.caiso.com">https://ads.caiso.com</a>	NA - Cutover	<a href="https://adsws.prod.caiso.com/">https://adsws.prod.caiso.com/</a>	NA - Cutover
OASIS	<a href="http://oasis.caiso.com">http://oasis.caiso.com</a>	NA - Cutover	<a href="http://oasis.caiso.com">http://oasis.caiso.com</a>	NA - Cutover
<b>Key</b>				
NA - Interface doesn't exist or already cutover				
Available for Transition - Users should be using now, cut over to these now				
Will be cutover - Users should move off these right away				
To be made available at a future date				
Cutover complete				

# Actions Required

- Customers should be using new UI & API URLs now
  - Ensure pre-requisites are configured
    - Whitelist ISO IPs
    - For API, install Entrust Certificates to application server trust stores
- Please ensure you are no longer using the old UI & API URLs as soon as possible to minimize access impacts when the final cutovers occur
- Report issues to CAISO via CIDI (guidance on next slide)

# Support: Information to Provide to ISO to Streamline Troubleshooting of Access Errors

- UI or API
- URL
- Certificate
- Source IP
- Observing lack of success accessing or intermittent errors/failures
- Observing issue on new URL only, old URL only, or both new and old URLs
- Have you experienced the issue in the MAPSTAGE environment? Are you able to reproduce the issue in the MAPSTAGE environment?
- For UIs
  - Browser(s)
- For APIs
  - Request
  - Response – *Full response file*
  - Have Entrust Certificates been added to your trust stores on your application servers
  - Are you using 3<sup>rd</sup> party software
  - Who is your vendor if applicable

# User Interfaces

System	UI - New	UI - Old
BAAOP	<a href="https://baaop.caiso.com">https://baaop.caiso.com</a>	
BSAP	<a href="https://bsap.caiso.com">https://bsap.caiso.com</a>	
CIRA	<a href="https://cira.caiso.com">https://cira.caiso.com</a>	NA - Cutover
CMRI	<a href="https://cmri.caiso.com">https://cmri.caiso.com</a>	
DRRS	<a href="https://dris.caiso.com">https://dris.caiso.com</a>	NA - Cutover
EIDE	NA	NA
ALFS (& FDR)	NA	NA
MF	<a href="https://mf.caiso.com">https://mf.caiso.com</a>	
PISOA	NA	NA
RCBSAP	<a href="https://rcbsap.caiso.com">https://rcbsap.caiso.com</a>	
RCSERVICES (RCEIDE)	NA	NA
SIBR	<a href="https://sibr.caiso.com">https://sibr.caiso.com</a>	
STLMT	<a href="https://stlmt.caiso.com">https://stlmt.caiso.com</a>	NA - Cutover
OMS	<a href="https://weboms.caiso.com">https://weboms.caiso.com</a>	NA - Cutover
ECIC	NA	NA
CRR	<a href="https://crr.caiso.com">https://crr.caiso.com</a>	
PLC	<a href="https://plc.caiso.com/">https://plc.caiso.com/</a>	
TR	<a href="https://tr.caiso.com">https://tr.caiso.com</a>	<a href="https://portal.caiso.com/tr">https://portal.caiso.com/tr</a>
ADS	<a href="https://ads.caiso.com">https://ads.caiso.com</a>	NA - Cutover
OASIS	<a href="http://oasis.caiso.com">http://oasis.caiso.com</a>	NA - Cutover
<b>Key</b>		
NA - Interface doesn't exist or already cutover		
Available for Transition - Users should be using now, cut over to these now		
Will be cutover - Users should move off these right away		
To be made available at a future date		
Cuotover complete		

- Cutover target for Feb 6, 2024
- No known issues to report
- ISO will continue to review CIDI cases and work with customers on isolated issues if any



# User Interfaces

- CIDs – none to report at this time

# Application Programming Interface

System	API - New	API - Old
BAAOP	<a href="https://ws.prod.caiso.com/sst/baaop">https://ws.prod.caiso.com/sst/baaop</a>	<a href="https://ws.caiso.com/sst/baaop">https://ws.caiso.com/sst/baaop</a>
BSAP	<a href="https://ws.prod.caiso.com/sst/bsap">https://ws.prod.caiso.com/sst/bsap</a>	<a href="https://ws.caiso.com/sst/bsap">https://ws.caiso.com/sst/bsap</a>
CIRA	<a href="https://ws.prod.caiso.com/sst/cira">https://ws.prod.caiso.com/sst/cira</a>	<a href="https://ws.caiso.com/sst/cira">https://ws.caiso.com/sst/cira</a>
CMRI	<a href="https://ws.prod.caiso.com/sst/cmri">https://ws.prod.caiso.com/sst/cmri</a>	<a href="https://ws.caiso.com/sst/cmri">https://ws.caiso.com/sst/cmri</a>
DRRS	<a href="https://ws.prod.caiso.com/sst/drrs">https://ws.prod.caiso.com/sst/drrs</a>	<a href="https://ws.caiso.com/sst/drrs">https://ws.caiso.com/sst/drrs</a>
EIDE	<a href="https://ws.prod.caiso.com/sst/eide">https://ws.prod.caiso.com/sst/eide</a>	<a href="https://ws.caiso.com/sst/eide">https://ws.caiso.com/sst/eide</a>
ALFS (& FDR)	<a href="https://ws.prod.caiso.com/sst/runtime.asvc">https://ws.prod.caiso.com/sst/runtime.asvc</a>	<a href="https://ws.caiso.com/sst/runtime.asvc">https://ws.caiso.com/sst/runtime.asvc</a>
MF	<a href="https://ws.prod.caiso.com/sst/runtime.asvc">https://ws.prod.caiso.com/sst/runtime.asvc</a>	<a href="https://ws.caiso.com/sst/runtime.asvc">https://ws.caiso.com/sst/runtime.asvc</a>
PISOA	<a href="https://ws.prod.caiso.com/sst/runtime.asvc">https://ws.prod.caiso.com/sst/runtime.asvc</a>	<a href="https://ws.caiso.com/sst/runtime.asvc">https://ws.caiso.com/sst/runtime.asvc</a>
RCBSAP	<a href="https://ws.prod.caiso.com/sst/rcbsap">https://ws.prod.caiso.com/sst/rcbsap</a>	<a href="https://ws.caiso.com/sst/rcbsap">https://ws.caiso.com/sst/rcbsap</a>
RCSERVICES (RCEIDE)	<a href="https://ws.prod.caiso.com/sst/rcservices">https://ws.prod.caiso.com/sst/rcservices</a>	<a href="https://ws.caiso.com/sst/rcservices">https://ws.caiso.com/sst/rcservices</a>
SIBR	<a href="https://ws.prod.caiso.com/sst/sibr">https://ws.prod.caiso.com/sst/sibr</a>	<a href="https://ws.caiso.com/sst/sibr">https://ws.caiso.com/sst/sibr</a>
STLMT	<a href="https://ws.prod.caiso.com/sst/stlmt">https://ws.prod.caiso.com/sst/stlmt</a>	<a href="https://ws.caiso.com/sst/stlmt">https://ws.caiso.com/sst/stlmt</a>
OMS	<a href="https://ws.prod.caiso.com/sst/weboms">https://ws.prod.caiso.com/sst/weboms</a>	<a href="https://ws.caiso.com/sst/weboms">https://ws.caiso.com/sst/weboms</a>
ECIC	<a href="https://ws.prod.caiso.com/sst/ecic">https://ws.prod.caiso.com/sst/ecic</a>	<a href="https://ws.caiso.com/sst/ecic">https://ws.caiso.com/sst/ecic</a>
CRR	NA	NA
PLC	NA	NA
TR	NA	NA
ADS	<a href="https://adsws.prod.caiso.com/">https://adsws.prod.caiso.com/</a>	NA - Cutover
OASIS	<a href="http://oasis.caiso.com">http://oasis.caiso.com</a>	NA - Cutover

- Cutover TBD (target was for Feb 19, 2024)
- ISO will continue to review CIDI cases and work with customers on isolated issues if any

Key
NA - Interface doesn't exist or already cutover
Available for Transition - Users should be using now, cut over to these now
Will be cutover - Users should move off these right away
To be made available at a future date
Cuotover complete

# Application Programming Interface

- CIDs

Summary	Status	CIDI
<p>Intermittent Connection Resets</p> <p>(Submits &amp; Retrieves on SIBR, BAAOP, BSAP, CMRI, DRRS, OMS)</p>	<p>ISO working with customers to explore/test potential causes:</p> <ul style="list-style-type: none"> <li>- File size (larger ones failing)</li> <li>- Number of characters (similar to above)</li> <li>- Chunked versus streamed data (shift away from chunked)</li> </ul> <p>ISO will schedule additional working sessions with customers as appropriate</p>	<p>269278 26941827 0168 270431 271384</p>
<p>Intermittent HTML Response “BIG-IP logout page”</p> <p>(Submits &amp; Retrieves on ADS, BSAP, SIBR, CMRI, ALFS)</p>	<p>ISO requesting customers to provide the full response files for further review</p> <p>ISO will schedule additional working sessions with customers as appropriate</p>	<p>269464 269347 269793 270088</p>

# Global Rate Limiting & Acceptable Use Policy

- **Global Rate Limit:**

- <https://developer.caiso.com/Documents/Technical-Specification-Rate-Limits-and-AUP-Implementation-v3.0.pdf>
- 30 per second across all the WS below combined per TCP source supported on the WS endpoint (1800 connections per minute); this includes submits and retrieves for **ws.prod.caiso APIs**:
  - BAAOP/BSAP/CIRA/CMRI/DRRS/EIDE/ALFS (& FDR)/MF/PISO/RCBSAP/RCSERVICES (RCEIDE)/SIBR/STLMT/OMS/ECIC
- The Global Rate Limit is enforced by namespace: WS (above), OASIS, and ADS

- **Service-Level Acceptable Use Policy (AUP) for CMRI, DRRS, and MRI-S**

- In addition to the Global Rate Limit above, these systems will have an additional layer of protection
- CMRI
  - [Tech Spec](#)
  - retrieves will leverage a 5-second period for enforcement for all CMRI services
  - there are no CMRI submits
- DRRS [Tech Spec](#)
  - Both submits and retrieves will leverage a 30-second period for enforcement for all DRRS services
- MRI-S (STLMT) [Tech Spec](#)
  - Retrieves of **METER DATA** will leverage a 30-second period for enforcement
  - submits will not have any additional layer of protection other than the Global Rate Limit above

# Global Rate Limiting & Acceptable Use Policy

- CIDs

Summary	Status	CIDI
Clarification on Global Rate Limit on WS	Addressed on 1/24 call and presentation	270195
Enhancement Request: Application AUP – Consider including SCID in the key	Under ISO review	271088

## Next steps

- Presentations and recordings will be published on [www.caiso.com](http://www.caiso.com) > Stay Informed > Release Planning > 2024 Releases > Independent 2024 > Application Delivery Resiliency
- Next occurrence Wednesday, February 7, 2024

## References

- <https://developer.caiso.com>
- [Application Delivery Resiliency Forum Presentations](#)
- [Technical User Group Presentations](#)
- [Release User Group Presentations](#)
- Contact:
  - CIDI
  - Trang Vo, Release Manager
    - [tvo@caiso.com](mailto:tvo@caiso.com)
    - [release@caiso.com](mailto:release@caiso.com)
  - Hugo Frech, Executive Director, IT Infrastructure, Architecture & Information Security
    - [hfrech@caiso.com](mailto:hfrech@caiso.com)
- The following slides are for reference

# UI & API URL & IP Changes (Application Delivery Resiliency)

- Areas
  - Access Policy Manager - Application Authentication
  - Local Traffic Manager - Load Balancing
  - Application Security Manager - Web Application Firewall
- User Impacts & Actions
  - New IP ranges requiring firewall changes
    - Please open the entire 45.42.16.0/21 network on ports 80 & 443 for our new IP space
  - New URLs for UIs and APIs requiring cutover
  - No application functionality changes expected
  - No provisioning changes expected



# UI & API URL & IP Changes (Application Delivery Resiliency)

**Current API Notice:** The California ISO implementation of the first phase of the Production Application Programming Interface (API) Web Service (WS) Uniform Resource Locator (URL) cutovers is now completed as of for Nov. 15, 2023 and has made the new Production API WS URLs available. The next and final phase of the Production API WS URL cutovers is now scheduled for TBD (was Feb. 19, 2024) and will move the existing Production API WS URLs to new infrastructure.

## Phase 1 – Nov. 15, 2023 **COMPLETE**

- No changes to existing API WS URLs: <https://ws.caiso.com/sst/<SYSTEM>/<SERVICE>>
- New API WS URLs are available: <https://ws.prod.caiso.com/sst/<SYSTEM>/<SERVICE>>
- Access to the new API WS URLs consist of the following that will require users to be configured per below:
  - **New IPs: Please open the entire 45.42.16.0/21 network on ports 80 & 443 for the new CAISO IP space**
  - **New Certificate Authority (was Verizon and is now Entrust): Please add the two Entrust certificates to your application trust stores on your servers**
  - **Global Rate Limit**
    - 30 per second across all the WS below combined per TCP source supported on the WS endpoint (1800 connections per minute); this includes submits and retrieves:
      - BAAOP/BSAP/CIRA/CMRI/DRRS/EIDE/ALFS (& FDR)/MF/PISOA/RCBSAP/RCSERVICES (RCEIDE)/SIBR/STLMT/OMS/ECIC
  - **Service-Level Acceptable Use Policy (AUP) for CMRI, DRRS, and MRI-S**
    - In addition to the Global Rate Limit above, these systems will have an additional layer of protection
    - CMRI
      - retrieves will leverage a 5-second period for enforcement
      - there are no CMRI submits
    - DRRS
      - Both submits and retrieves will leverage a 30-second period for enforcement
    - MRI-S (STLMT)
      - Retrieves of METER DATA will leverage a 30-second period for enforcement
      - submits will not have any additional layer of protection other than the Global Rate Limit above

## Phase 2 – TBD (was Feb. 19, 2024 tentatively)

- No additional changes to the new API WS URLs made available in Phase 1: <https://ws.prod.caiso.com/sst/<SYSTEM>/<SERVICE>>
- The existing API WS URLs: <https://ws.caiso.com/sst/<SYSTEM>/<SERVICE>> will be cutover to new underlying infrastructure
- Access to the existing API WS URLs will now also require users to be configured per below (same as above):
  - New IPs
  - New Certificate Authority (was Verizon and is now Entrust)
  - Global Rate Limit
  - Service-Level Acceptable Use Policy (AUP) for CMRI, DRRS, and MRI-S

Customers are encouraged to contact Trang Vo at [tvo@caiso.com](mailto:tvo@caiso.com) or [release@caiso.com](mailto:release@caiso.com) and/or submit a CIDI case for any questions.

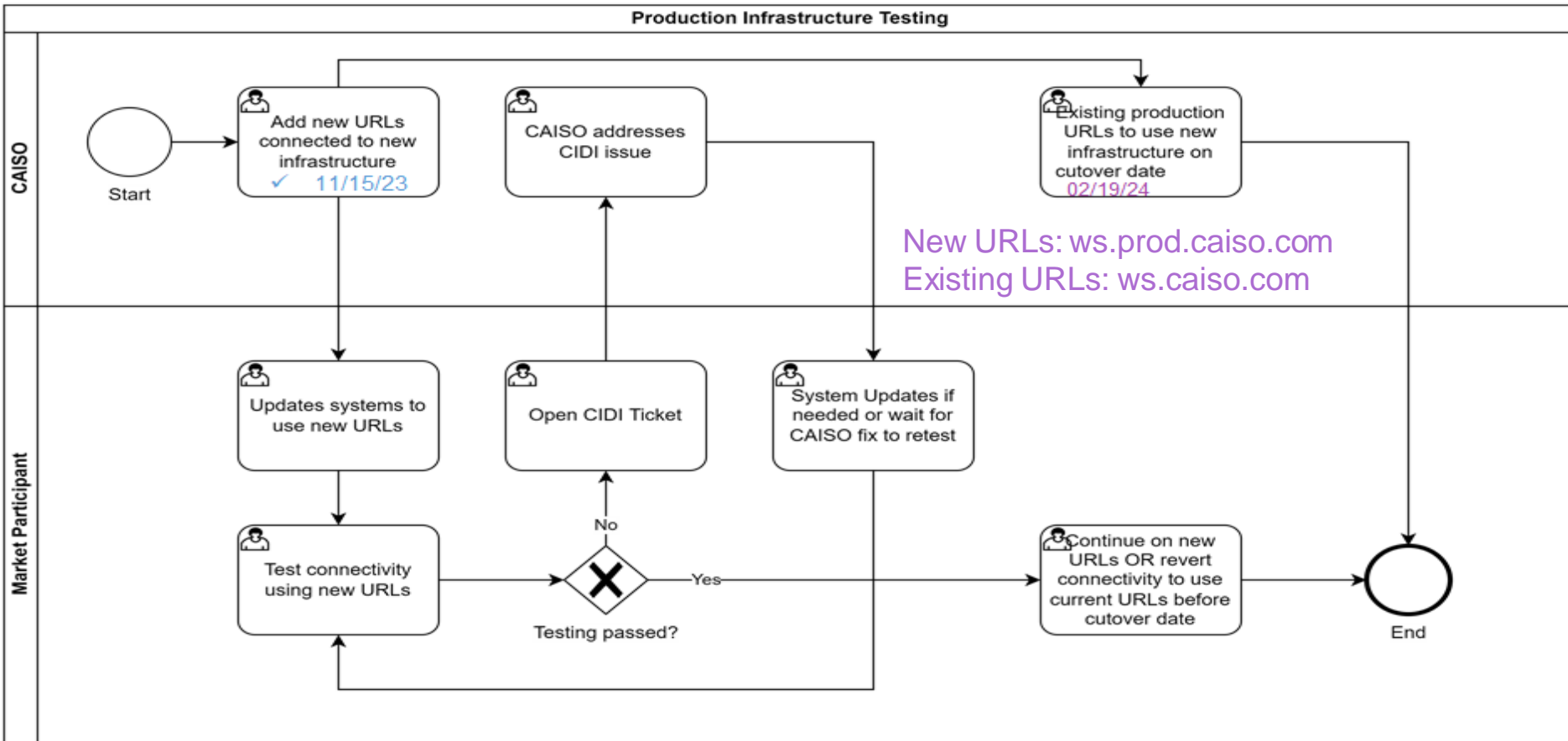
# UI & API URL & IP Changes (Application Delivery Resiliency)

## Production API Transition Plan – **Actions Necessary for API Users**

- **SOFT CUTOVER: Production new API URLs (ws.prod.caiso) as of Nov 15, 2023 to transition**
  - **Customers strongly encouraged to cut over to these permanent new API URLs as soon as possible to minimize impacts for the final hard cutover Feb 19, 2024. Please let the ISO know if you need assistance transitioning to the new URLs.**
- **HARD CUTOVER: Production current/existing (ws.caiso) API URLs cutover TBD (target was Feb 19, 2024)**
  - **New infrastructure**
  - **New IPs**
  - **New Certificate Authority (Entrust)**
  - **Service-Level AUP for CMRI/DRRS/MRI-S**
- **Production new API URLs (ws.prod.caiso) will remain available indefinitely; users can continue using the new URLs**
- Please open the entire 45.42.16.0/21 network on ports 80 & 443 for our new IP space to access new API URLs
- The Production transition and cut-over will be different than how MAP-STAGE occurred. The new APIs are available as of 11/15/23.

# UI & API URL & IP Changes (Application Delivery Resiliency)

Customers should cut over to the new URLs ws.prod.caiso.com starting 11/15/23 and as soon as possible before 2/19/24.



# UI & API URL & IP Changes (Application Delivery Resiliency)

1. 1) Here are the API URL formats for non-Production & Production; note what is available/permanent

	Old	New URL & Infrastructure	New
MAPSTAGE	<p>Deprecated &amp; no longer available as of 9/21/23</p> <ul style="list-style-type: none"> <li><a href="https://wsmap.caiso.com/sst/&lt;SYSTEM&gt;/&lt;SERVICE&gt;">https://wsmap.caiso.com/sst/&lt;SYSTEM&gt;/&lt;SERVICE&gt;</a></li> <li><a href="https://wsmap.caiso.com/sst/&lt;SYSTEM&gt;/&lt;SERVICE&gt;_DocAttach">https://wsmap.caiso.com/sst/&lt;SYSTEM&gt;/&lt;SERVICE&gt;_DocAttach</a></li> </ul>	NA	<p>Available permanently since 5/18/23</p> <ul style="list-style-type: none"> <li><a href="https://mapstage-ws.caiso.com/sst/&lt;SYSTEM&gt;/&lt;SERVICE&gt;">https://mapstage-ws.caiso.com/sst/&lt;SYSTEM&gt;/&lt;SERVICE&gt;</a></li> <li><a href="https://mapstage-ws.caiso.com/sst/&lt;SYSTEM&gt;/&lt;SERVICE&gt;_DocAttach">https://mapstage-ws.caiso.com/sst/&lt;SYSTEM&gt;/&lt;SERVICE&gt;_DocAttach</a></li> </ul>
PRODUCTION	<p>Available now on existing infrastructure</p> <ul style="list-style-type: none"> <li><a href="https://ws.caiso.com/sst/&lt;SYSTEM&gt;/&lt;SERVICE&gt;_DocAttach">https://ws.caiso.com/sst/&lt;SYSTEM&gt;/&lt;SERVICE&gt;_DocAttach</a></li> </ul>	<p>Available now as of 11/15/23 on new infrastructure ready for customers to transition to</p> <ul style="list-style-type: none"> <li><a href="https://ws.prod.caiso.com/sst/&lt;SYSTEM&gt;/&lt;SERVICE&gt;_DocAttach">https://ws.prod.caiso.com/sst/&lt;SYSTEM&gt;/&lt;SERVICE&gt;_DocAttach</a></li> </ul>	<p>Original URLs to be cut-over to new infrastructure at a future date target 2/19/24</p> <ul style="list-style-type: none"> <li><a href="https://ws.caiso.com/sst/&lt;SYSTEM&gt;/&lt;SERVICE&gt;_DocAttach">https://ws.caiso.com/sst/&lt;SYSTEM&gt;/&lt;SERVICE&gt;_DocAttach</a></li> </ul>

2. As mentioned on the call and shown above, there are URL/IP changes in flight now for the APIs

1. Please open the entire 45.42.16.0/21 network on ports 80 & 443 for our new IP space
2. There is a new Certificate Authority for the new APIs (changed from Verizon to Entrust)
3. API Acceptable Use Policy: In addition the existing global rate limit of 30 per second across all the apps combined supported on the WS endpoint (1800 connections per minute), here are additional protections within these apps on the new URLs
  1. These will return a SOAP fault with AUP fails:
  2. <SOAP-ENV:Fault>
 

```
<faultcode>SOAP-ENV:Server</faultcode>
<faultstring xml:lang="en">429: CAISO Acceptable Use Policy Violation. Please retry your request after <n> seconds.</faultstring>
<detail>
```
  3. Apps
    1. CMRI
    2. DRRS
    3. STLMT
4. Impacted APIs on next slide

# UI & API URL & IP Changes (Application Delivery)

	Old	New URL & Infrastructure	New
MAPSTAGE	<p>Deprecated &amp; no longer available as of 9/21/23</p> <p><a href="https://wsmap.caiso.com/sst/&lt;SYSTEM&gt;/&lt;SERVICE&gt;">https://wsmap.caiso.com/sst/&lt;SYSTEM&gt;/&lt;SERVICE&gt;</a></p> <ul style="list-style-type: none"> <li><a href="https://wsmap.caiso.com/sst/&lt;SYSTEM&gt;/&lt;SERVICE&gt;_DocAttach">https://wsmap.caiso.com/sst/&lt;SYSTEM&gt;/&lt;SERVICE&gt;_DocAttach</a></li> </ul>	NA	<p>Available permanently since 5/18/23</p> <ul style="list-style-type: none"> <li><a href="https://mapstage-ws.caiso.com/sst/&lt;SYSTEM&gt;/&lt;SERVICE&gt;">https://mapstage-ws.caiso.com/sst/&lt;SYSTEM&gt;/&lt;SERVICE&gt;</a></li> <li><a href="https://mapstage-ws.caiso.com/sst/&lt;SYSTEM&gt;/&lt;SERVICE&gt;_DocAttach">https://mapstage-ws.caiso.com/sst/&lt;SYSTEM&gt;/&lt;SERVICE&gt;_DocAttach</a></li> </ul>
PRODUCTION	<p>Available now on existing infrastructure</p> <ul style="list-style-type: none"> <li><a href="https://ws.caiso.com/sst/&lt;SYSTEM&gt;/&lt;SERVICE&gt;_DocAttach">https://ws.caiso.com/sst/&lt;SYSTEM&gt;/&lt;SERVICE&gt;_DocAttach</a></li> </ul>	<p>Available now as of 11/15/23 on new infrastructure ready for customers to transition to</p> <ul style="list-style-type: none"> <li><a href="https://ws.prod.caiso.com/sst/&lt;SYSTEM&gt;/&lt;SERVICE&gt;_DocAttach">https://ws.prod.caiso.com/sst/&lt;SYSTEM&gt;/&lt;SERVICE&gt;_DocAttach</a></li> </ul>	<p>Original URLs to be cut-over to new infrastructure at a future date target 2/19/24</p> <ul style="list-style-type: none"> <li><a href="https://ws.caiso.com/sst/&lt;SYSTEM&gt;/&lt;SERVICE&gt;_DocAttach">https://ws.caiso.com/sst/&lt;SYSTEM&gt;/&lt;SERVICE&gt;_DocAttach</a></li> </ul>
<b>Production</b>	<b>Existing Production API</b>	<b>New URL for Transition of Production API</b>	<b>Existing/Original Production API URLs to be cut over to new infrastructure and IPs</b>
BAAOP	<a href="https://ws.caiso.com/sst/baaop">https://ws.caiso.com/sst/baaop</a>	<a href="https://ws.prod.caiso.com/sst/baaop">https://ws.prod.caiso.com/sst/baaop</a>	<a href="https://ws.caiso.com/sst/baaop">https://ws.caiso.com/sst/baaop</a>
BSAP	<a href="https://ws.caiso.com/sst/bsap">https://ws.caiso.com/sst/bsap</a>	<a href="https://ws.prod.caiso.com/sst/bsap">https://ws.prod.caiso.com/sst/bsap</a>	<a href="https://ws.caiso.com/sst/bsap">https://ws.caiso.com/sst/bsap</a>
CIRA	<a href="https://ws.caiso.com/sst/cira">https://ws.caiso.com/sst/cira</a>	<a href="https://ws.prod.caiso.com/sst/cira">https://ws.prod.caiso.com/sst/cira</a>	<a href="https://ws.caiso.com/sst/cira">https://ws.caiso.com/sst/cira</a>
CMRI	<a href="https://ws.caiso.com/sst/cmri">https://ws.caiso.com/sst/cmri</a>	<a href="https://ws.prod.caiso.com/sst/cmri">https://ws.prod.caiso.com/sst/cmri</a>	<a href="https://ws.caiso.com/sst/cmri">https://ws.caiso.com/sst/cmri</a>
DRRS	<a href="https://ws.caiso.com/sst/drrs">https://ws.caiso.com/sst/drrs</a>	<a href="https://ws.prod.caiso.com/sst/drrs">https://ws.prod.caiso.com/sst/drrs</a>	<a href="https://ws.caiso.com/sst/drrs">https://ws.caiso.com/sst/drrs</a>
EIDE	<a href="https://ws.caiso.com/sst/eide">https://ws.caiso.com/sst/eide</a>	<a href="https://ws.prod.caiso.com/sst/eide">https://ws.prod.caiso.com/sst/eide</a>	<a href="https://ws.caiso.com/sst/eide">https://ws.caiso.com/sst/eide</a>
ALFS (& FDR)	<a href="https://ws.caiso.com/sst/runtime.asvc">https://ws.caiso.com/sst/runtime.asvc</a>	<a href="https://ws.prod.caiso.com/sst/runtime.asvc">https://ws.prod.caiso.com/sst/runtime.asvc</a>	<a href="https://ws.caiso.com/sst/runtime.asvc">https://ws.caiso.com/sst/runtime.asvc</a>
MF	<a href="https://ws.caiso.com/sst/runtime.asvc">https://ws.caiso.com/sst/runtime.asvc</a>	<a href="https://ws.prod.caiso.com/sst/runtime.asvc">https://ws.prod.caiso.com/sst/runtime.asvc</a>	<a href="https://ws.caiso.com/sst/runtime.asvc">https://ws.caiso.com/sst/runtime.asvc</a>
PISOA	<a href="https://ws.caiso.com/sst/runtime.asvc">https://ws.caiso.com/sst/runtime.asvc</a>	<a href="https://ws.prod.caiso.com/sst/runtime.asvc">https://ws.prod.caiso.com/sst/runtime.asvc</a>	<a href="https://ws.caiso.com/sst/runtime.asvc">https://ws.caiso.com/sst/runtime.asvc</a>
RCBSAP	<a href="https://ws.caiso.com/sst/rcbsap">https://ws.caiso.com/sst/rcbsap</a>	<a href="https://ws.prod.caiso.com/sst/rcbsap">https://ws.prod.caiso.com/sst/rcbsap</a>	<a href="https://ws.caiso.com/sst/rcbsap">https://ws.caiso.com/sst/rcbsap</a>
RCSERVICES (RCEIDE)	<a href="https://ws.caiso.com/sst/rcservices">https://ws.caiso.com/sst/rcservices</a>	<a href="https://ws.prod.caiso.com/sst/rcservices">https://ws.prod.caiso.com/sst/rcservices</a>	<a href="https://ws.caiso.com/sst/rcservices">https://ws.caiso.com/sst/rcservices</a>
SIBR	<a href="https://ws.caiso.com/sst/sibr">https://ws.caiso.com/sst/sibr</a>	<a href="https://ws.prod.caiso.com/sst/sibr">https://ws.prod.caiso.com/sst/sibr</a>	<a href="https://ws.caiso.com/sst/sibr">https://ws.caiso.com/sst/sibr</a>
STLMT	<a href="https://ws.caiso.com/sst/stlmt">https://ws.caiso.com/sst/stlmt</a>	<a href="https://ws.prod.caiso.com/sst/stlmt">https://ws.prod.caiso.com/sst/stlmt</a>	<a href="https://ws.caiso.com/sst/stlmt">https://ws.caiso.com/sst/stlmt</a>
OMS	<a href="https://ws.caiso.com/sst/weboms">https://ws.caiso.com/sst/weboms</a>	<a href="https://ws.prod.caiso.com/sst/weboms">https://ws.prod.caiso.com/sst/weboms</a>	<a href="https://ws.caiso.com/sst/weboms">https://ws.caiso.com/sst/weboms</a>
ECIC	<a href="https://ws.caiso.com/sst/ecic">https://ws.caiso.com/sst/ecic</a>	<a href="https://ws.prod.caiso.com/sst/ecic">https://ws.prod.caiso.com/sst/ecic</a>	<a href="https://ws.caiso.com/sst/ecic">https://ws.caiso.com/sst/ecic</a>

# UI & API URL & IP Changes (Application Delivery Resiliency) – Certification Authority

- New Certificate Authority
  - There is a new certificate authority for the new API URL infrastructure: It was Verizon and is now Entrust
  - Please add the two certificates to your application trust stores on your servers to access the new API URL infrastructure
  - The new Production API URLs and existing Production API URLs after cutover have a different Root and Intermediate certificate:
    - Entrust Root Certification Authority – G2
    - Entrust Certification Authority – L1M

# UI & API URL & IP Changes (Application Delivery Resiliency) – Certification Authority

The screenshot shows a web browser window with the address bar displaying `ws.prod.caiso.com/sst/cmri/RetrieveMarketAwards_CMRIv4_AP`. The main content area displays an XML error message: "This XML file does not appear to have any style information associated with it". Below the message is the XML structure:

```
<?xml version="1.0" encoding="UTF-8" ?>
<soap:Envelope xmlns:soap="http://schemas.xmlsoap.org/soap/envelope/">
  <soap:Header />
  <soap:Body>
    <soap:Fault>
      <faultcode>soap:Client</faultcode>
      <faultstring>SECUI080: The security contract requires the document to be signed with a certificate from the CAISOCERTS root certificate</faultstring>
    </soap:Fault>
  </soap:Body>
</soap:Envelope>
```

Overlaid on the browser is a "Certificate Viewer: ws.prod.caiso.com" window. The "Details" tab is active, showing the following information:

- Certificate Hierarchy:**
  - Entrust Root Certification Authority - G2
    - Entrust Certification Authority - L1M
      - ws.prod.caiso.com
- Certificate Fields:**
  - Authority Information Access
  - CRL Distribution Points
  - Certificate Subject Alternative Name
  - Certificate Key Usage
  - Extended Key Usage
  - Certificate Policies
  - Signed Certificate Timestamp List
  - Certificate Signature Algorithm
- Field Value:**
  - Not Critical
  - DNS Name: ws.prod.caiso.com
  - DNS Name: ws.caiso.com
  - DNS Name: ws.prod.ecn.wepex.net
  - DNS Name: ws.ecn.wepex.net

An "Export..." button is located at the bottom right of the Certificate Viewer window.

# UI & API URL & IP Changes (Application Delivery Resiliency) – Certification Authority Questions

What do API customers need to do to access new URLs and maintain access to existing URLs after the cutover?

- Add the two Entrust certificates to your application trust stores on your servers (see image on previous slide)

Will customers be able to access the current Production API URLs (pre-cutover) after adding the two Entrust certificates?

- Yes, this is an addition of the two Entrust certificates to your trust store, but the existing Verizon certificates will still be there and work for the current Production API URLs pre-cutover

When should customers add the two Entrust certificates to their Production server application trust stores?

- This can be done now without impacting Production API access (see above), and should be done prior to 11/9 to access the new Production API URLs (ws.prod.caiso), and should be done NLT 12/20 to avoid impacts to Production API access on the existing API URLs (ws.caiso)

How will user certificates be impacted?

- No changes needed to user certificates for the Production API URL cutover
- User certificates are also changing from Verizon to Entrust as they expire and are renewed, but do not need to be on Entrust prior to the Production API URL cutover
- For example, if a user has an existing Verizon user certificate that expires mid-2024, that Verizon user certificate will still be able to access the new Production API URL infrastructure (11/9/23 onwards for new URLs, and 12/21/23 onwards for existing URLs)



# UI & API URL & IP Changes (Application Delivery Resiliency) - New Certification Authority

## References

- Entrust L1M Certificate Authority: [http://web.entrust.com/subca-certificates/L1M-G2-Xcert\\_20141215.cer?\\_gl=1\\*1pabf82\\*\\_ga\\*MTk2NDQzNTE0LjE2ODc0NjQ1NjA.\\*\\_ga\\_6QRW66BW5T\\*MTY4NzQ2NDU1OS4xLjEuMTY4NzQ2NDU4MS4zOC4wLjA.&\\_ga=2.121940939.1908197984.1687464560-196443514.1687464560](http://web.entrust.com/subca-certificates/L1M-G2-Xcert_20141215.cer?_gl=1*1pabf82*_ga*MTk2NDQzNTE0LjE2ODc0NjQ1NjA.*_ga_6QRW66BW5T*MTY4NzQ2NDU1OS4xLjEuMTY4NzQ2NDU4MS4zOC4wLjA.&_ga=2.121940939.1908197984.1687464560-196443514.1687464560)
- Entrust Root Certificate Authority: [https://web.entrust.com/root-certificates/entrust\\_g2\\_ca.cer?\\_gl=1\\*1t3efhy\\*\\_ga\\*MTk2NDQzNTE0LjE2ODc0NjQ1NjA.\\*\\_ga\\_6QRW66BW5T\\*MTY4NzQ2NDU1OS4xLjEuMTY4NzQ2NDU4MS4zOC4wLjA.&\\_ga=2.127397581.1908197984.1687464560-196443514.1687464560](https://web.entrust.com/root-certificates/entrust_g2_ca.cer?_gl=1*1t3efhy*_ga*MTk2NDQzNTE0LjE2ODc0NjQ1NjA.*_ga_6QRW66BW5T*MTY4NzQ2NDU1OS4xLjEuMTY4NzQ2NDU4MS4zOC4wLjA.&_ga=2.127397581.1908197984.1687464560-196443514.1687464560)
- Parent pages these came from:
  - <https://www.entrust.com/knowledgebase/ssl/entrust-certificate-services-subordinate-cas>
  - <https://www.entrust.com/resources/certificate-solutions/tools/root-certificate-downloads>

# UI & API URL & IP Changes

## Phase 1: Cutover for new API URLs

- CAISO previously sent communications on the soft cutover for the new API URLs in the MAP Stage environment. Market Participants are required to validate access and transition to the new API URLs before August 15, 2023. The old API URLs in MAP Stage are no longer available as of September 1, 2023. For Production, the new permanent APIs are available as of 11/15/23 and customers strongly encouraged to cut over to these permanent new API URLs as soon as possible to minimize impacts for the final hard cutover Feb 19, 2024. Please let the ISO know if you need assistance transitioning to the new URLs.

## Phase 2: Cutover for new UI URLs

- Starting on July, 27, 2023, some of the ISO applications will be available for testing starting in the MAP Stage environment and then Production. Application access is based on the user's provisioning. No application downtime is expected. We will send additional communication for the remaining UI URLs once they are ready for validation.

## Action requested:

- Market Participants can begin accessing the new UI URLs in parallel with the current UI URLs for a window of time.
- The timeline to validate access and transition to the new UI URLs for each environment is shorter than the API timeline; therefore, action is needed sooner.
- Once the new UI URLs are deployed into Production, Market Participants have until Tuesday, February 6, 2024 to validate and transition to the new UI URLs.
- For the APIs, customers strongly encouraged to cut over to these permanent new API URLs as soon as possible to minimize impacts for the final hard cutover Feb 19, 2024. Please let the ISO know if you need assistance transitioning to the new URLs.

Applications & Environments	Deployment Start Dates	New User Interface (UI) URLs	Deprecation of Old URL
<b>Balancing Area Authority Operations Portal (BAAOP)</b>			
MAP Stage	Fri 7/28/23	<a href="https://mapstage-baaop.caiso.com">https://mapstage-baaop.caiso.com</a>	Fri 12/8/23
Production	Wed 9/20/23	<a href="https://baaop.caiso.com">https://baaop.caiso.com</a>	Tue 2/6/24
<b>Base Schedule Aggregation Portal (BSAP)</b>			
MAP Stage	Fri 7/28/23	<a href="https://mapstage-bsap.caiso.com">https://mapstage-bsap.caiso.com</a>	Fri 12/8/23
Production	Mon 10/16/23	<a href="https://bsap.caiso.com">https://bsap.caiso.com</a>	Tue 2/6/24
<b>Reliability Coordinator Base Schedule Aggregation Portal (RCBSAP)</b>			
MAP Stage	Fri 7/28/23	<a href="https://mapstage-rcsap.caiso.com">https://mapstage-rcsap.caiso.com</a>	Fri 12/8/23
Production	Tue 10/26/23	<a href="https://rcsap.caiso.com">https://rcsap.caiso.com</a>	Tue 2/6/24
<b>Schedule Infrastructure &amp; Business Rules (SIBR)</b>			
MAP Stage	Fri 7/28/23	<a href="https://mapstage-sibr.caiso.com">https://mapstage-sibr.caiso.com</a>	Fri 12/8/23
Production	Mon 10/16/23	<a href="https://sibr.caiso.com">https://sibr.caiso.com</a>	Tue 2/6/24
<b>Reporting (Includes SIBR Reports, Transmission Registry, RIMS, Master File, and FSP folder)</b>			
MAP Stage	Mon 7/31/23	<a href="https://mapstage-reporting.caiso.com">https://mapstage-reporting.caiso.com</a>	Fri 12/8/23
Production	Tue 12/5/23	<a href="https://reporting.caiso.com">https://reporting.caiso.com</a>	Tue 2/6/24
<b>Market Participant Portal (MPP)</b>			
MAP Stage	Thu 01/11/24	<a href="https://mapstage-mpp.caiso.com">https://mapstage-mpp.caiso.com</a>	Tue 1/23/24
Production	Tue 02/06/24	<a href="https://mpp.caiso.com">https://mpp.caiso.com</a>	Tue 2/6/24
<b>Customer Market Results Interface (CMRI)</b>			
MAP Stage	Thu 8/3/23	<a href="https://mapstage-cmri.caiso.com">https://mapstage-cmri.caiso.com</a>	Fri 12/8/23
Production	Thu 10/19/23	<a href="https://cmri.caiso.com">https://cmri.caiso.com</a>	Tue 2/6/24
<b>Congestion Revenue Rights (CRR)</b>			
MAP Stage	Mon 8/7/23	<a href="https://mapstage-crr.caiso.com">https://mapstage-crr.caiso.com</a>	Fri 12/8/23
Production	Thu 10/19/23	<a href="https://crr.caiso.com">https://crr.caiso.com</a>	Tue 2/6/24
<b>WEIM Portal</b>			
MAP Stage	Done	<a href="https://mapstage-weim.caiso.com">https://mapstage-weim.caiso.com</a>	Fri 12/8/23
Production	Done	<a href="https://weim.caiso.com">https://weim.caiso.com</a>	Tue 2/6/24
<b>Master File (MF)</b>			
MAP Stage	Wed 8/9/23	<a href="https://mapstage-mf.caiso.com">https://mapstage-mf.caiso.com</a>	Fri 12/8/23
Production	Thu 10/19/23	<a href="https://mf.caiso.com">https://mf.caiso.com</a>	Tue 2/6/24
<b>Transmission Registry (TR)</b>			
MAP Stage	Tue 9/5/23	<a href="https://mapstage-tr.caiso.com/">https://mapstage-tr.caiso.com/</a>	Fri 12/8/23
Production	Tue 2/27/24	<a href="https://tr.caiso.com">https://tr.caiso.com</a>	TBD
<b>Path Limit Calculator (PLC)</b>			
Production	Thu 10/19/23	<a href="https://plc.caiso.com/">https://plc.caiso.com/</a>	Tue 2/6/24
<b>Hosted Advanced Network Applications (HANA) Base / HANA Study</b>			
Production	Tue 10/26/23	<a href="https://hana.caiso.com/">https://hana.caiso.com/</a> <a href="https://hanastudy.caiso.com/">https://hanastudy.caiso.com/</a>	Tue 2/6/24