



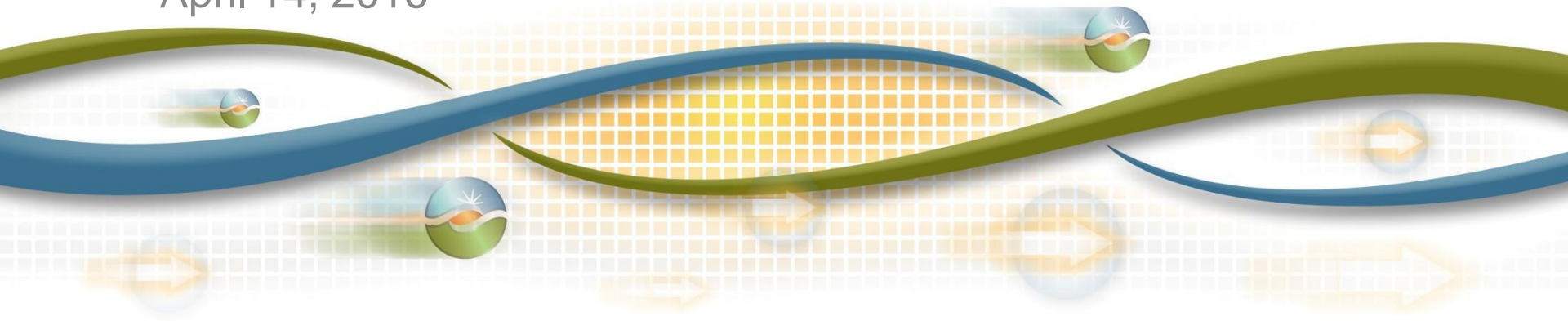
# 2017 Final LCR Study Results Kern

Chris Mensah-Bonsu

Regional Transmission Engineer Lead

Stakeholder Call

April 14, 2016



# Fresno and Kern LCR Areas



# Kern Load and Resources (MW)

Year		<b>2017</b>
Load	=	1142
AAEE	=	-12
Transmission Losses	=	9
Total Load	=	<b>1139</b>
Market Generation/Net Seller	=	463
New Unit/Market Generation	=	28
Muni Generation	=	0
QF/Self Generation	=	60
Total Qualifying Capacity	=	<b>551</b>

# Kern Area LCR

## 2017 West Park Sub-Area

### Limiting Contingencies:

#### Category B:

- No Category B requirement

#### Category C:

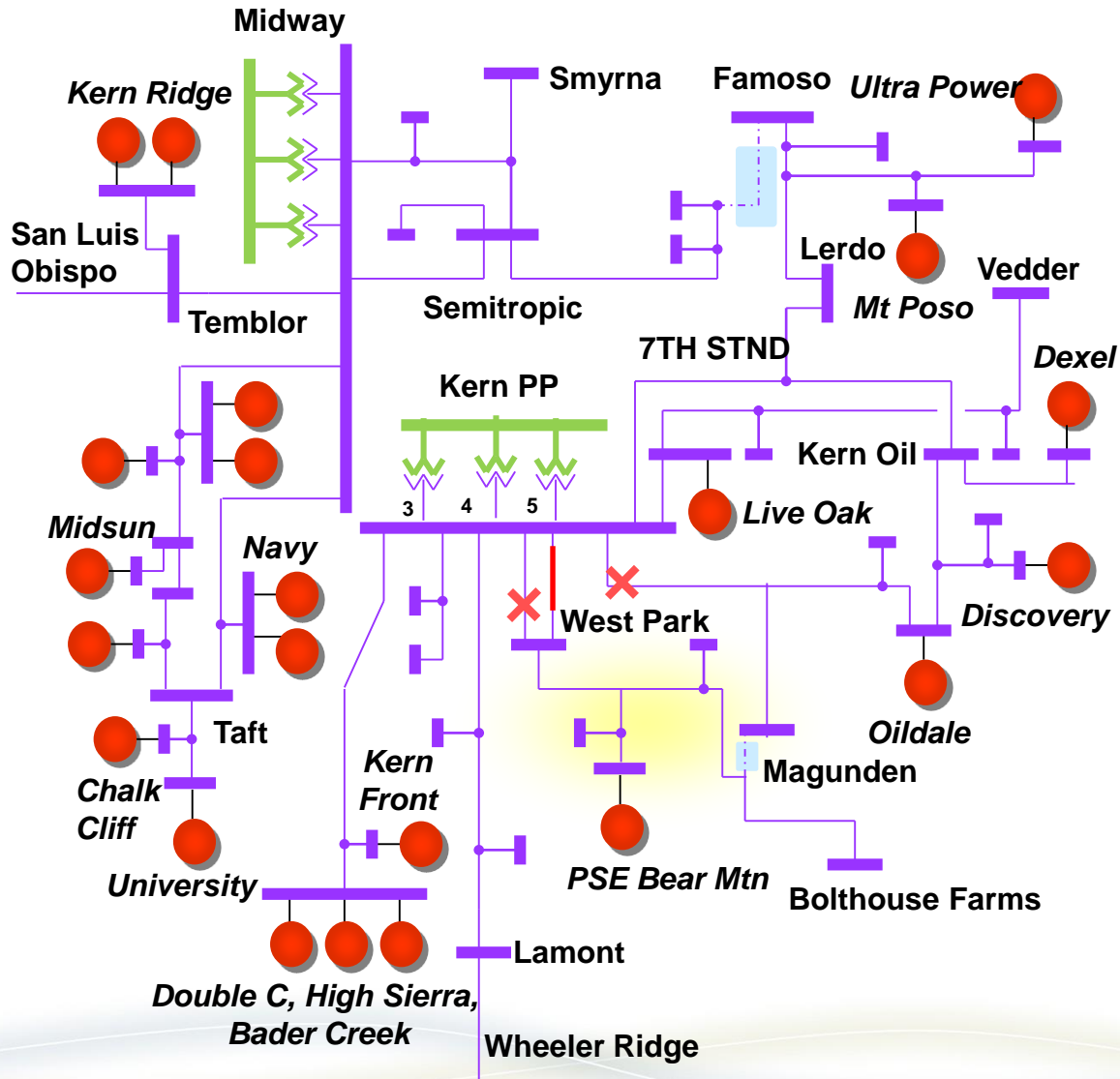
- L-1/L-1: Kern PP-Magunden-Witco 115 kV Line & Kern PP-Westpark #1 or #2 115 kV Line out of service
- Constraint: Kern PP-Westpark #2 or #1 115 kV Line

### LCR Results (MW):

Contingency	Cat. B	Cat. C
LCR	0	44

Including:

QF	0	45
Muni	0	0
Deficiency	0	0



# Kern Area LCR

## 2017 Kern Oil Sub-Area

### Limiting Contingencies:

#### Category B:

- G-1/L-1: Kern PP-Magunden-Witco 115 kV Line with PSE Live Oak generation out of service
- Constraint: Kern PP-Live Oak 115 kV

#### Category C:

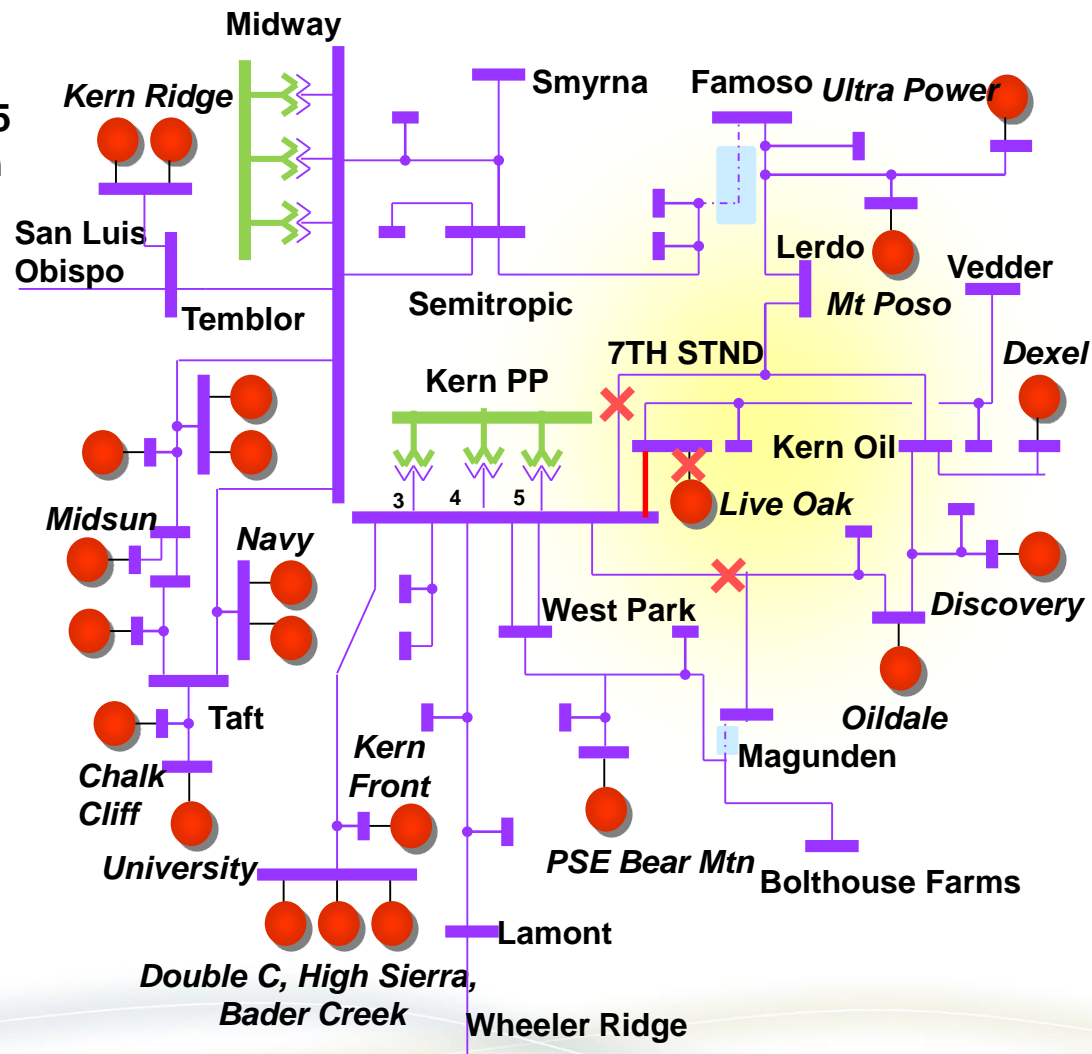
- L-1/L-1: Kern PP-Magunden-Witco & Kern PP-7th Standard 115 kV lines
- Constraint: Kern PP-Live Oak 115 kV Line

#### LCR Results (MW):

Contingency	Cat. B	Cat. C
LCR	137	148

Including:

QF	15	15
Muni	0	0
Deficiency	0	0



# Kern Area LCR

## 2017 South Kern PP Sub-Area

### Limiting Contingencies:

#### Category B:

- T-1: Kern PP #5 230/115 kV Bank
- Constraint: Kern #4 230/115 kV Bank

#### Category C:

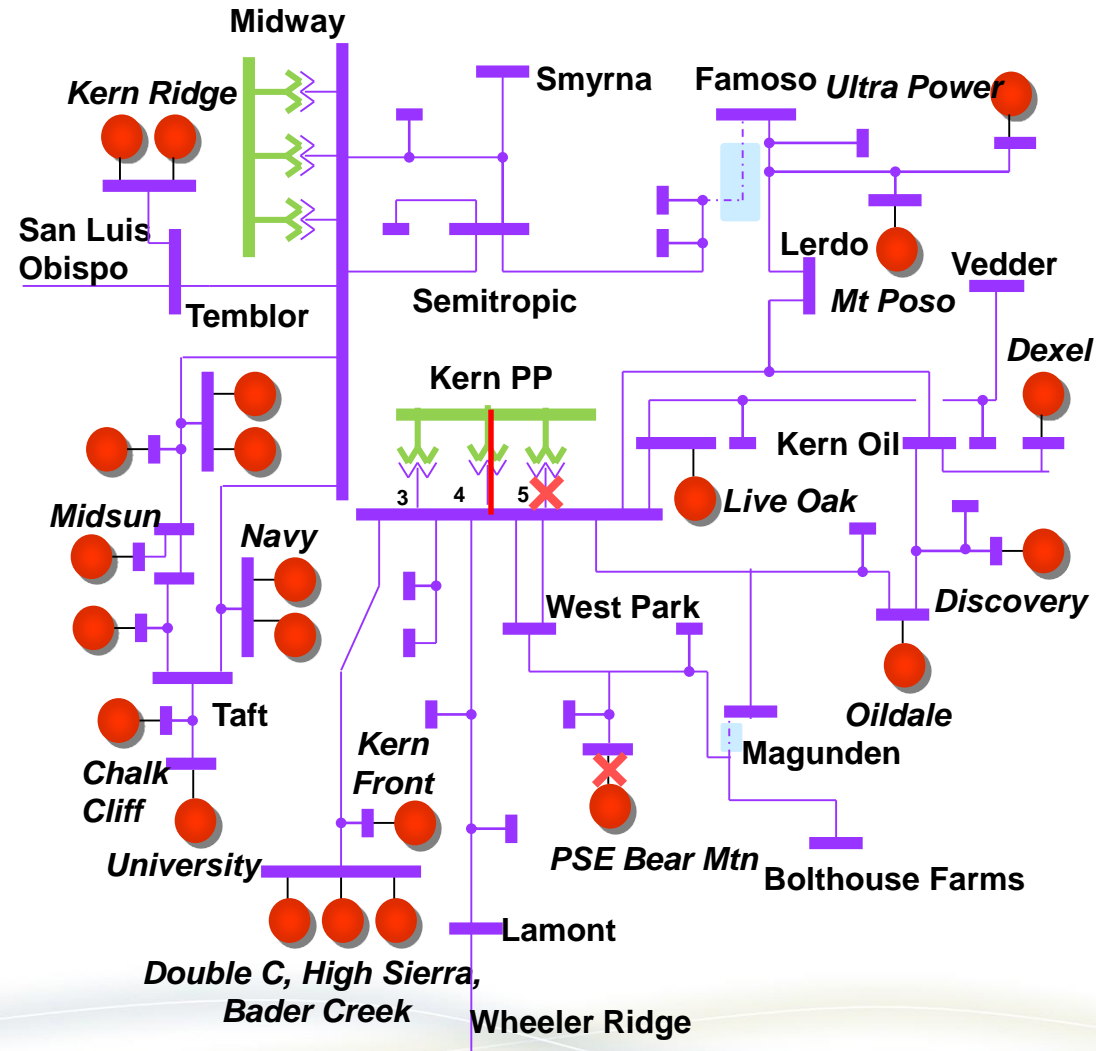
- G-1/T-1 PSE Bear Unit #1 & Kern PP #5 230/115 kV Bank
- Constraint: Kern PP #4 230/115 kV Bank

### LCR Results (MW):

Contingency	Cat. B	Cat. C
LCR	61	106

Including:

QF	60	60
Muni	0	0
Deficiency	0	0



# Kern Area LCR

## 2017 Kern PP Overall

### Limiting Contingencies:

#### Category B:

- **G-1/L-1: Midway-Kern PP #3 230 kV Line with High Sierra out of service**
- **Constraint: Midway-Kern PP #1 230 kV Line**
- **No requirement beyond Kern Oil sub-area**

#### Category C:

- **L-1/L-1 Midway-Kern PP #3 & Midway-Kern PP #4 230 kV Lines**
- **Constraint: Midway-Kern PP #1 230 kV Line**

### LCR Results (MW):

Contingency	Cat. B	Cat. C
LCR	137	492

Including:

QF	60	60
Muni	0	0
Deficiency	0	0

# Changes

## Since last year:

- 1) Westpark sub-area has been re-established due to automatic transfer of Magunden substation for the loss of Kern-Magunden-Witco 115 kV
- 2) 2017 area load forecast remains about same from 2016
- 3) 2017 LCR has increased by 92 MW from 2016 mostly due to Kern PP #3 & #4 230/115 kV transformer capacity upgrades and additional load (about 280 MW) triggered by re-definition to account for the 3 new Midway 230 kV binding constraint lines.

## Since last stakeholder meeting:

- 1) Updated NQC.

**Your comments and questions are welcome.**

**For written comments, please send to: [RegionalTransmission@caiso.com](mailto:RegionalTransmission@caiso.com)**