



California ISO
Shaping a Renewed Future

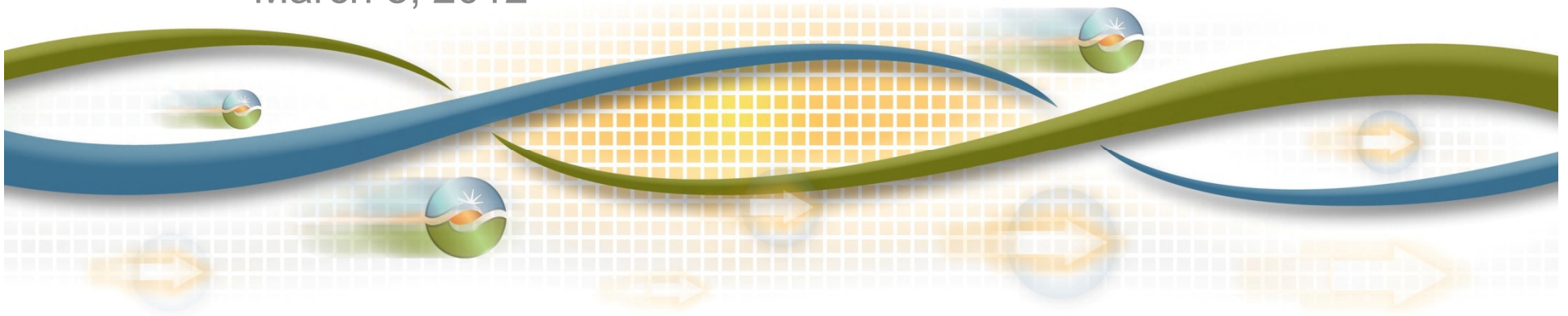
2013 Draft LCR Study Results Greater Bay Area

Bryan Fong

Senior Regional Transmission Engineer

Stakeholder Meeting

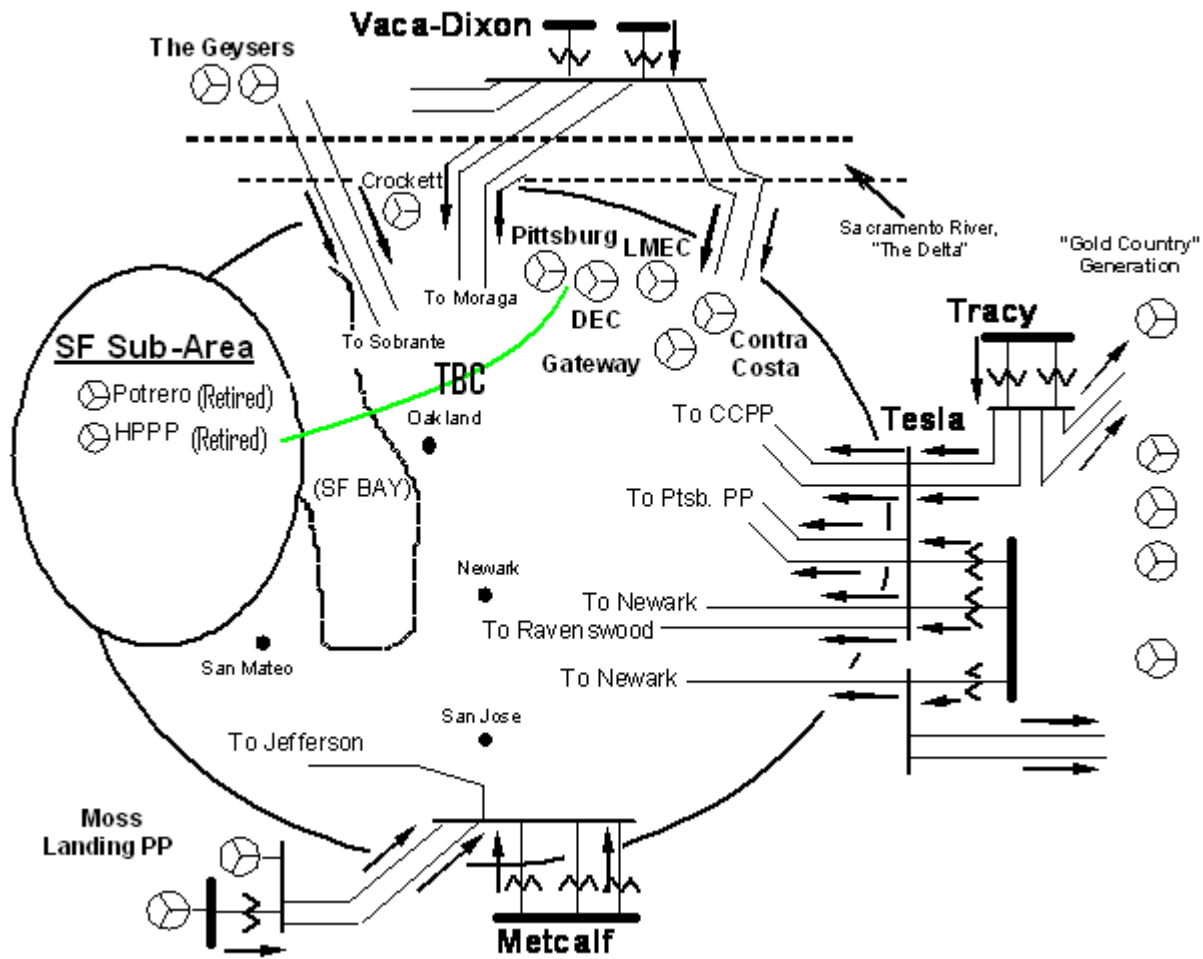
March 8, 2012



Greater Bay Area Map



Greater Bay Area Transmission System



New major transmission projects

- Vaca Dixon - Sobrante - Moraga 230 kV Reinforcement
05/01/2013
- Pittsburg-Tesla 230 kV #1 & 2 Lines Reconductoring –
05/30/2013
- Replace Moraga 230/115kV Bank #1 with larger unit - 12/30
2012
- Eastshore - San Mateo 230 kV Line Reconductor – 12/01/2011
- Eastshore - Dumbarton 115 kV Line Reconductor - 06/01/2012

Power plant changes

Additions:

- Four Wind farms connected to Birds Landing (~ 340 MW P max)
- Russell City Energy Center (~ 606 MW P max) - 01/01/2013
- Marsh Landing Generating Station (~ 774 MW P max) - 12/01/2012
- Los Esteros Critical Energy Facility (LECEF) capacity increase by 120 MW (total 295 MW) - 05/01/2013

Greater Bay Area Load

2013 1-in-10 Year Load Representation

Total Load = 9766 MW

Transmission Losses = 207 MW

Pumps = 270 MW

Total Load + Losses + Pumps = 10,243 MW

San Jose Sub Area

San Jose Sub-area – Category B

- Contingency: Metcalf-Evergreen #1 115 kV with Duane PP out of service
- LCR need: 354 MW (includes 255 MW of QF/Muni generation)
- Limiting component: Thermal overload of NRS–SRS 115 kV

San Jose Sub-area – Category C

- Contingency: Metcalf El Patio #1 or #2 overlapped with the outage of Metcalf-Evergreen #1 115 kV
- LCR need: 558 MW (includes 255 MW of QF/Muni generation)
- There is deficiency of 38 MW in this pocket area
- Limiting component: Thermal overload of Evergreen–San Jose B 115 kV

Llagas Sub Area

Llagas Sub-area – Category B

- Contingency: Metcalf D-Morgan Hill 115 kV with one of the Gilroy peakers off line
- LCR need: 101 MW (includes 0 MW of QF/Muni generation)
- Limiting component: Thermal overload on the Metcalf-Llagas 115 kV as well as 5% voltage drop at the Morgan Hill substation

Llagas Sub-area – Category C

- Same as Category B

Oakland Sub Area

Oakland Sub-area – Category B

- No LCR needs

Oakland Sub-area – Category C

- Contingency: overlapping C-X #2 and C-X #3 115 kV Cables
- LCR need: 68 MW (includes 49 MW of QF/Muni generation)
- Limiting component: Thermal overload on the D-L 115kV line

**This requirement does not include the need for the
Pittsburg/ Oakland sub-area**

Pittsburg/Oakland Sub Area

Pittsburg/Oakland Sub-area – Category B

- Contingency: Moraga #3 230/115 kV Bank
- LCR need: 1966 MW (includes 448 MW of QF/Muni generation)
- Limiting component: Thermal overload on Moraga #1 230/115 kV Bank

Pittsburg/Oakland Sub-area – Category C

- Contingency: Moraga #3 230/115 kV Bank and Delta Energy Center
- LCR need: 2379 MW (includes 448 MW of QF/Muni generation)
- Limiting component: Thermal overload on Moraga #1 230/115 kV Bank
- 400 MW of Trans Bay Cable run back has been used

Contra Costa Sub Area

Contra Costa Sub-area – Category B

- Contingency: Kelso-Tesla 230 kV with the Gateway off line
- LCR need: 1052 MW (includes 311 MW of QF/Muni generation and 264 MW of Muni pump load)
- Limiting component: Thermal overload on the Delta Switching Yard-Tesla 230 kV Line

Contra Costa Sub-area – Category C

- Same as Category B

Greater Bay Area Overall

Bay Area Overall – Category B

- Contingency: Tesla-Metcalf 500 kV line with Delta Energy Center out of service
- LCR need: 3479 MW (includes 1244 MW of QF/Muni/Wind generation)
- Limiting component: Reactive margin within the Bay Area

Bay Area Overall – Category C

- Contingency: overlapping Tesla-Metcalf 500 kV line and Tesla-Newark #1 230 kV line
- LCR need: 4502 MW (includes 1244 MW of QF/Muni/Wind generation)
- Limiting component: Thermal overload on the Tesla-Ravenswood 230 kV line

Greater Bay Area Total LCR

2013	Wind (MW)	QF/Selfgen (MW)	Muni (MW)	Market (MW)	Max. Qualifying Capacity (MW)
Available generation	261	532	519	5982	7294

2013	Existing Generation Capacity Needed (MW)	Deficiency (MW)	Total MW LCR
Category B (Single)	3479	0	3479
Category C (Multiple)	4502	38	4540

Changes

Since last year:

- 1) Load forecast is higher by 273 MW
- 2) LCR need has decreased by 262 MW from last year
- 3) Sum of sub-area LCR needs is NOT enough to satisfy the overall Bay Area requirement (57 MW are common for Pittsburg and Contra Costa sub-areas)
- 4) Added Generation Profile
 - Russell City Generation
 - Marsh Landing Generating

Your comments and questions are welcome.

For written comments, please send to: RegionalTransmission@caiso.com