

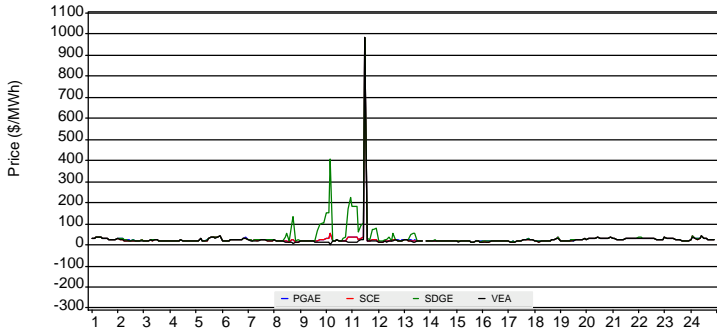
The information contained in this report is preliminary, subject to change without notice. No inference, decision, or conclusion should be made based on the information in this report or any series of these reports. Any questions regarding this report should be directed to CAISO MQR.

# Real-Time Daily Market Watch

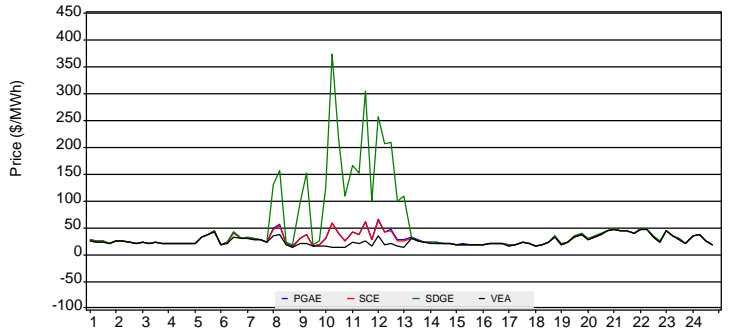
## For Operating Day of Wednesday, May 23, 2018

(Note: An explanation of all metrics is available in the Real-Time Daily Market Watch Metric Catalog at <http://www.caiso.com/2426/2426bf61d950.html>)

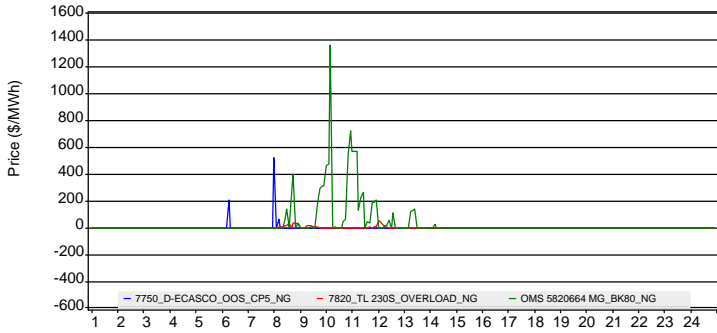
RTD Default LAP LMPs



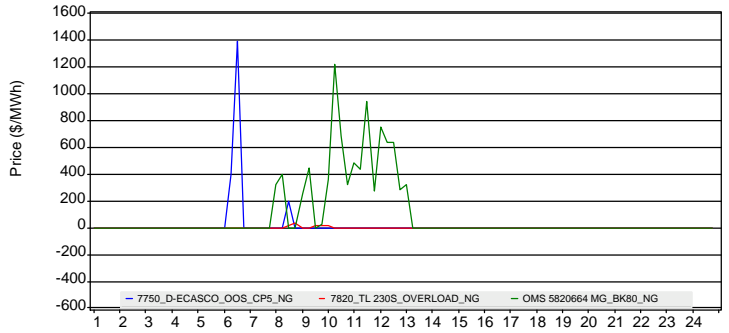
FMM Default LAP LMPs



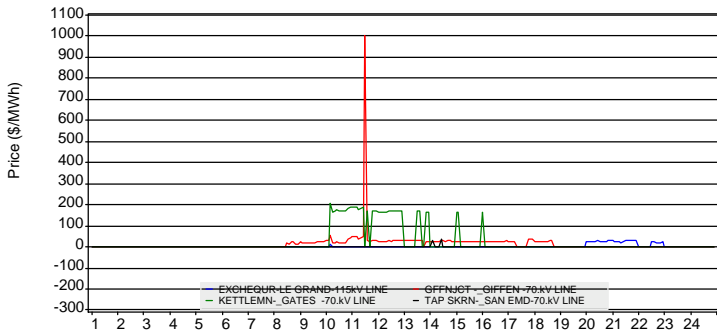
Selected RTD Nomogram Shadow Prices



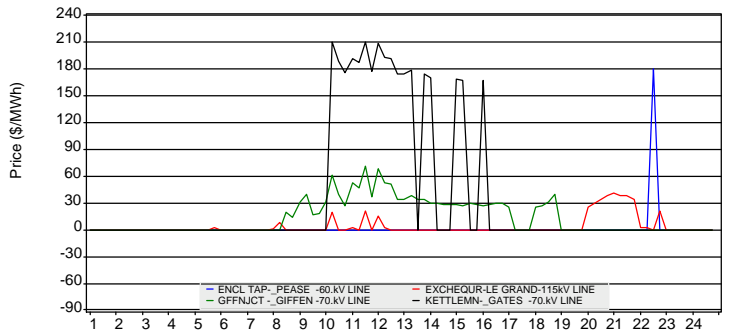
Selected FMM Nomogram Shadow Prices



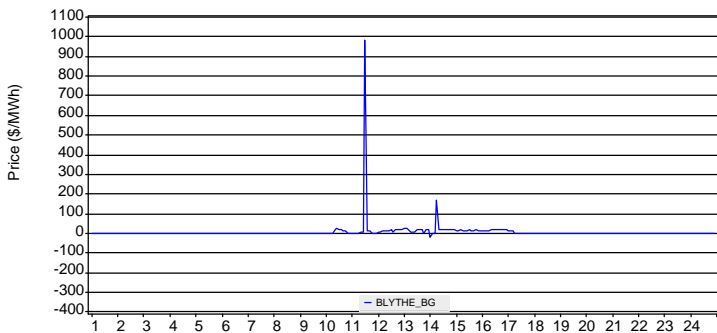
Selected RTD Transmission Line and Transformer Shadow Prices



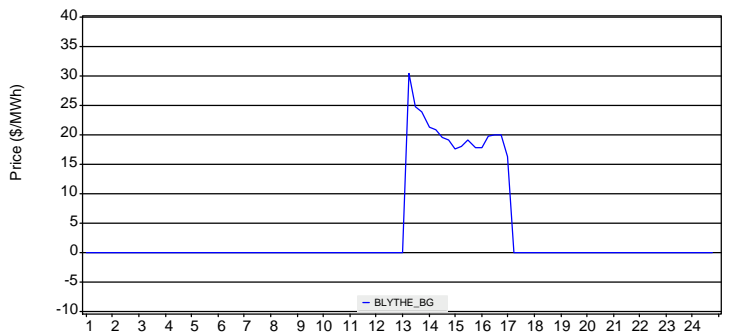
Selected FMM Transmission Line and Transformer Shadow Prices



Selected RTD Transmission Corridor Shadow Prices



Selected FMM Transmission Corridor Shadow Prices

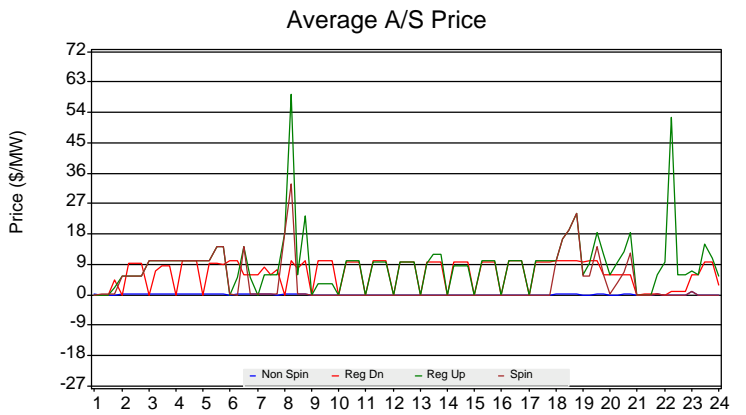
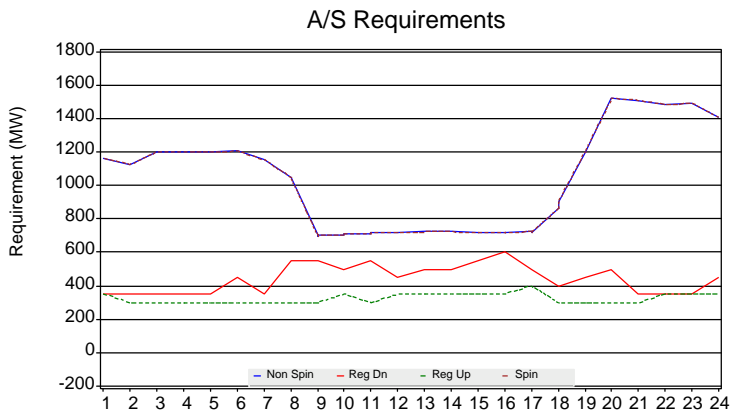
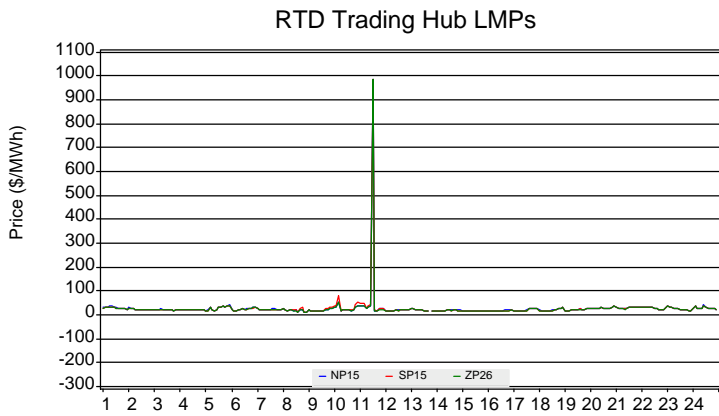
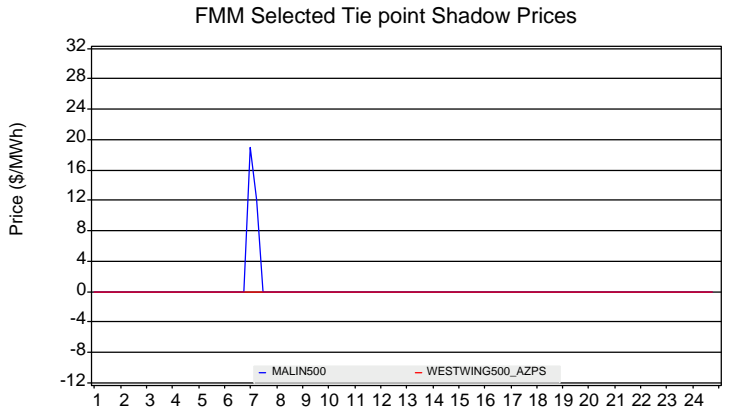
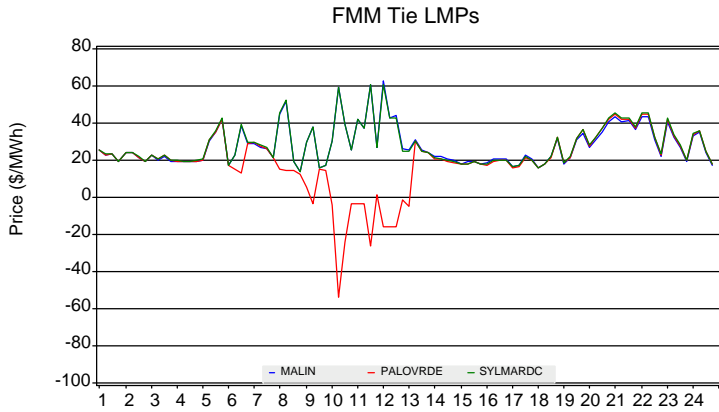


The information contained in this report is preliminary, subject to change without notice. No inference, decision, or conclusion should be made based on the information in this report or any series of these reports. Any questions regarding this report should be directed to CAISO MQR1.

# Real-Time Daily Market Watch

## For Operating Day of Wednesday, May 23, 2018

(Note: An explanation of all metrics is available in the Real-Time Daily Market Watch Metric Catalog at <http://www.caiso.com/2426/2426bf61d950.html> )



### LMP Statistics for On and Off-Peak Hours (\$/MWh)

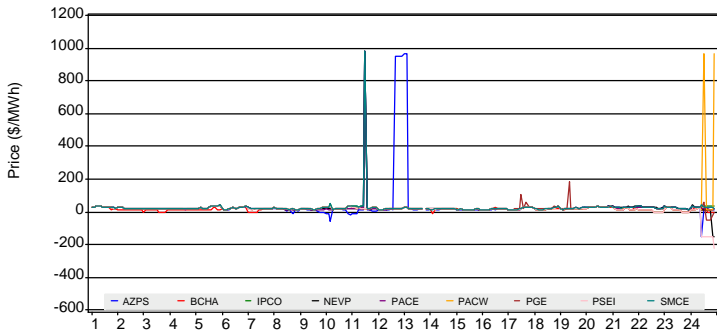
|            | NP15  |       |       | SP15  |       |       | ZP26  |       |       | PGAE  |       |       | SCE   |       |       | SDGE  |       |       | VEA   |       |       |
|------------|-------|-------|-------|-------|-------|-------|-------|-------|-------|-------|-------|-------|-------|-------|-------|-------|-------|-------|-------|-------|-------|
|            | Max   | Mean  | Min   | Max   | Mean  | Min   | Max   | Mean  | Min   | Max   | Mean  | Min   | Max   | Mean  | Min   | Max   | Mean  | Min   | Max   | Mean  | Min   |
| <b>OFF</b> | 40.60 | 24.88 | 15.94 | 39.79 | 24.42 | 15.58 | 39.79 | 24.44 | 15.69 | 41.76 | 25.63 | 16.42 | 41.11 | 25.17 | 16.07 | 41.87 | 25.68 | 16.40 | 40.80 | 24.89 | 15.91 |
| <b>ON</b>  | 984.3 | 27.40 | 12.77 | 984.3 | 27.81 | 12.89 | 984.3 | 26.79 | 12.11 | 984.3 | 27.94 | 13.13 | 984.3 | 27.46 | 12.68 | 984.3 | 40.71 | 14.76 | 984.3 | 25.37 | 2.50  |

The information contained in this report is preliminary, subject to change without notice. No inference, decision, or conclusion should be made based on the information in this report or any series of these reports. Any questions regarding this report should be directed to CAISO MQR1.

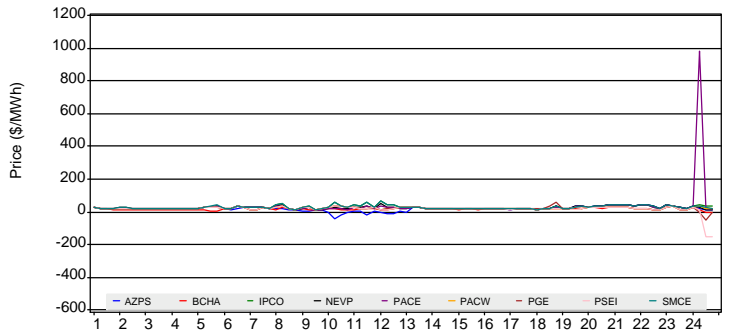
# Real-Time Daily Market Watch

## For Operating Day of Wednesday, May 23, 2018

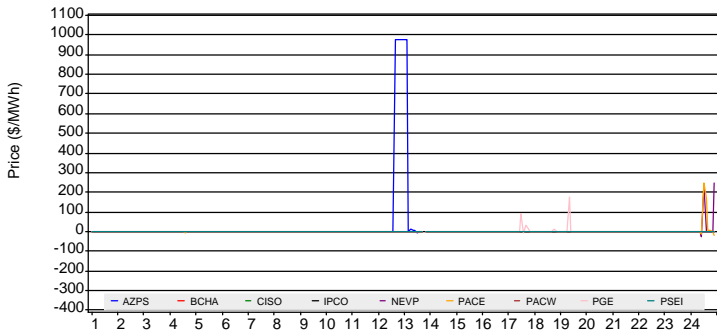
RTD ELAP LMPs and System Energy Prices



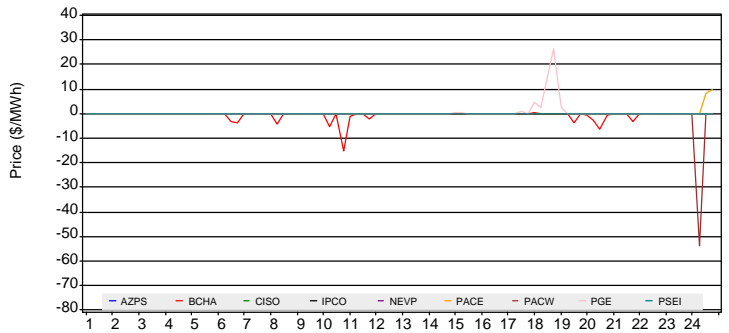
FMM ELAP LMPs and System Energy Prices



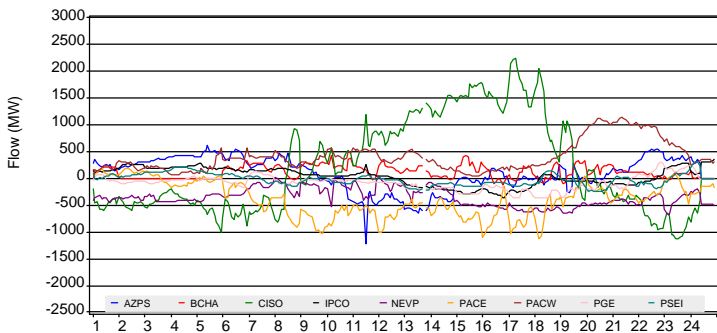
RTD EIM Transfer Limit Shadow Price



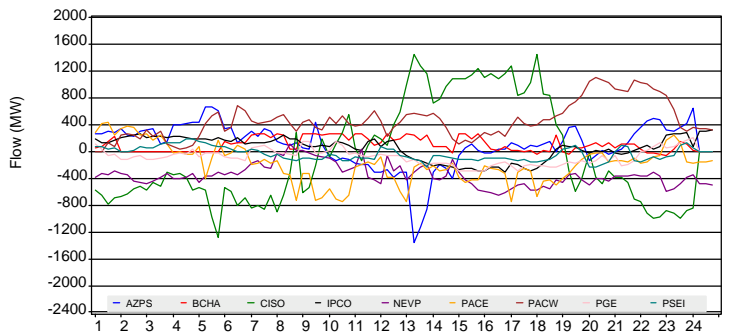
FMM EIM Transfer Limit Shadow Price



RTD EIM Transfer Flow



FMM EIM Transfer Flow



LMP Statistics for On and Off-Peak Hours (\$/MWh)

|            | PACE   |       |       | PACW   |       |       | NEVP   |       |         | AZPS   |       |         | PSEI  |       |         |
|------------|--------|-------|-------|--------|-------|-------|--------|-------|---------|--------|-------|---------|-------|-------|---------|
|            | Max    | Mean  | Min   | Max    | Mean  | Min   | Max    | Mean  | Min     | Max    | Mean  | Min     | Max   | Mean  | Min     |
| <b>OFF</b> | 39.47  | 23.54 | 15.75 | 967.48 | 41.21 | 1.07  | 40.45  | 20.35 | -153.97 | 39.92  | 21.86 | -155.00 | 39.24 | 8.55  | -217.93 |
| <b>ON</b>  | 984.29 | 25.57 | 11.14 | 33.94  | 19.83 | -3.25 | 984.29 | 26.43 | 11.53   | 984.29 | 52.44 | -56.98  | 34.00 | 19.59 | -3.22   |

|            | PGE    |       |        | BCHA  |       |        | IPCO   |       |       |
|------------|--------|-------|--------|-------|-------|--------|--------|-------|-------|
|            | Max    | Mean  | Min    | Max   | Mean  | Min    | Max    | Mean  | Min   |
| <b>OFF</b> | 56.32  | 19.39 | -46.32 | 33.98 | 14.13 | -3.14  | 40.00  | 25.03 | 15.92 |
| <b>ON</b>  | 186.62 | 21.69 | -3.24  | 34.00 | 20.20 | -10.68 | 984.29 | 27.40 | 12.44 |