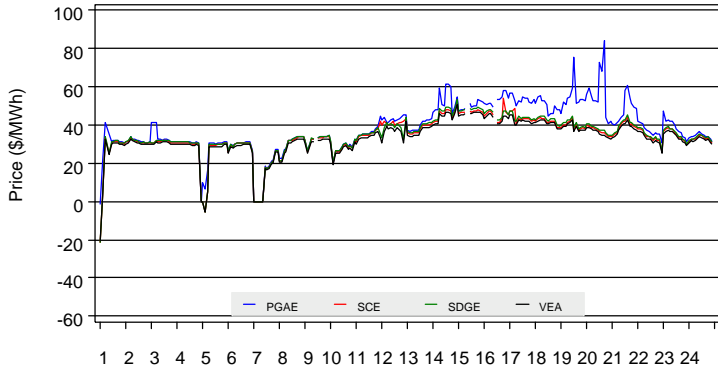
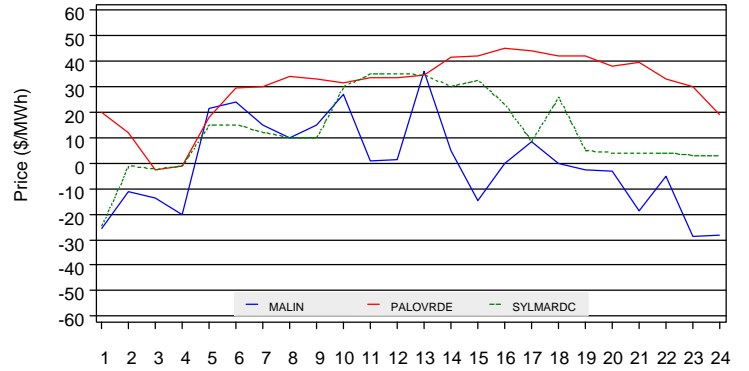


(Note: An explanation of all metrics is available in the Real-Time Daily Market Watch Metric Catalog at <http://www.caiso.com/2426/2426bf61d950.html> )

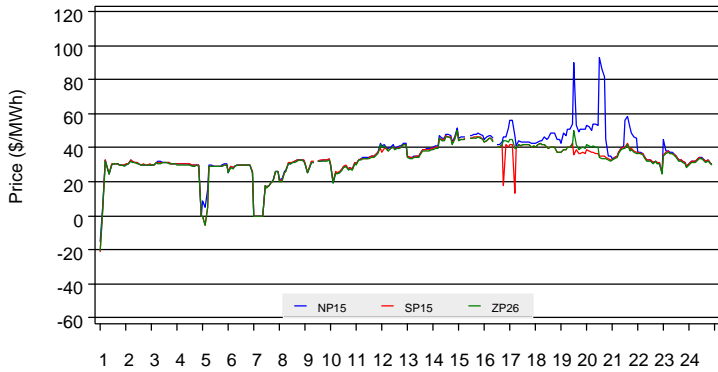
Default LAP LMPs



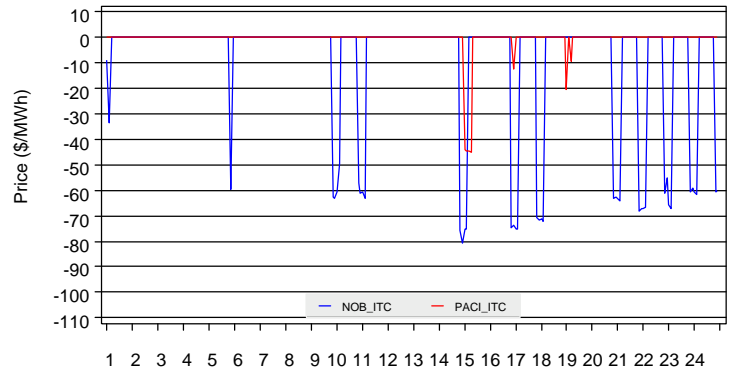
Hourly Average LMPs of Selected Inter-Ties (HASP DATA)



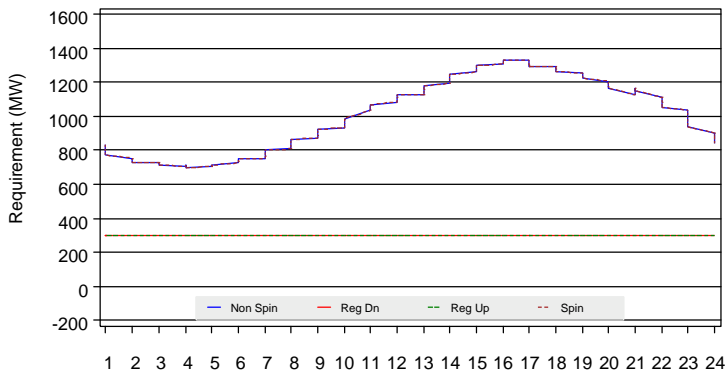
Trading Hub LMPs



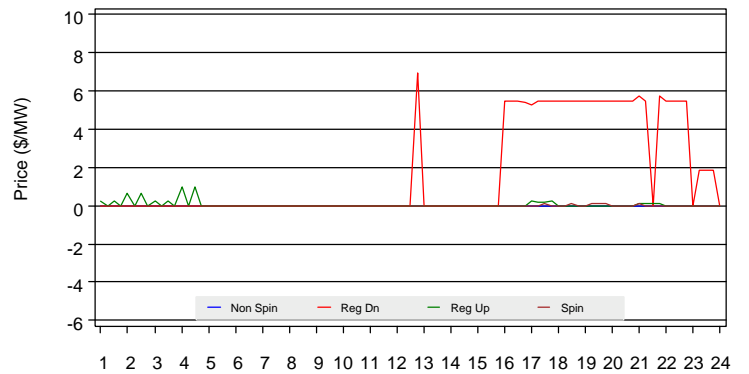
Selected Inter-Tie Shadow Prices



A/S Requirements



Average A/S Price



LMP Statistics for On and Off-Peak Hours (\$/MWh)

	NP15			SP15			ZP26			PG&E			SCE			SDGE			VEA		
	Max	Mean	Min	Max	Mean	Min	Max	Mean	Min	Max	Mean	Min	Max	Mean	Min	Max	Mean	Min	Max	Mean	Min
<b>OFF</b>	44.54	29.31	-15.68	37.81	28.77	-21.03	37.08	28.43	-20.83	47.17	31.50	-1.81	38.47	29.20	-21.37	39.10	29.48	-21.58	37.37	28.49	-20.88
<b>ON</b>	93.21	39.30	0.01	50.48	35.35	0.01	49.90	35.59	0.01	83.93	42.30	0.01	53.62	36.75	0.01	53.24	37.15	0.01	50.45	35.39	0.01