



# 2025 & 2029 Final LCR Study Results Sierra Area

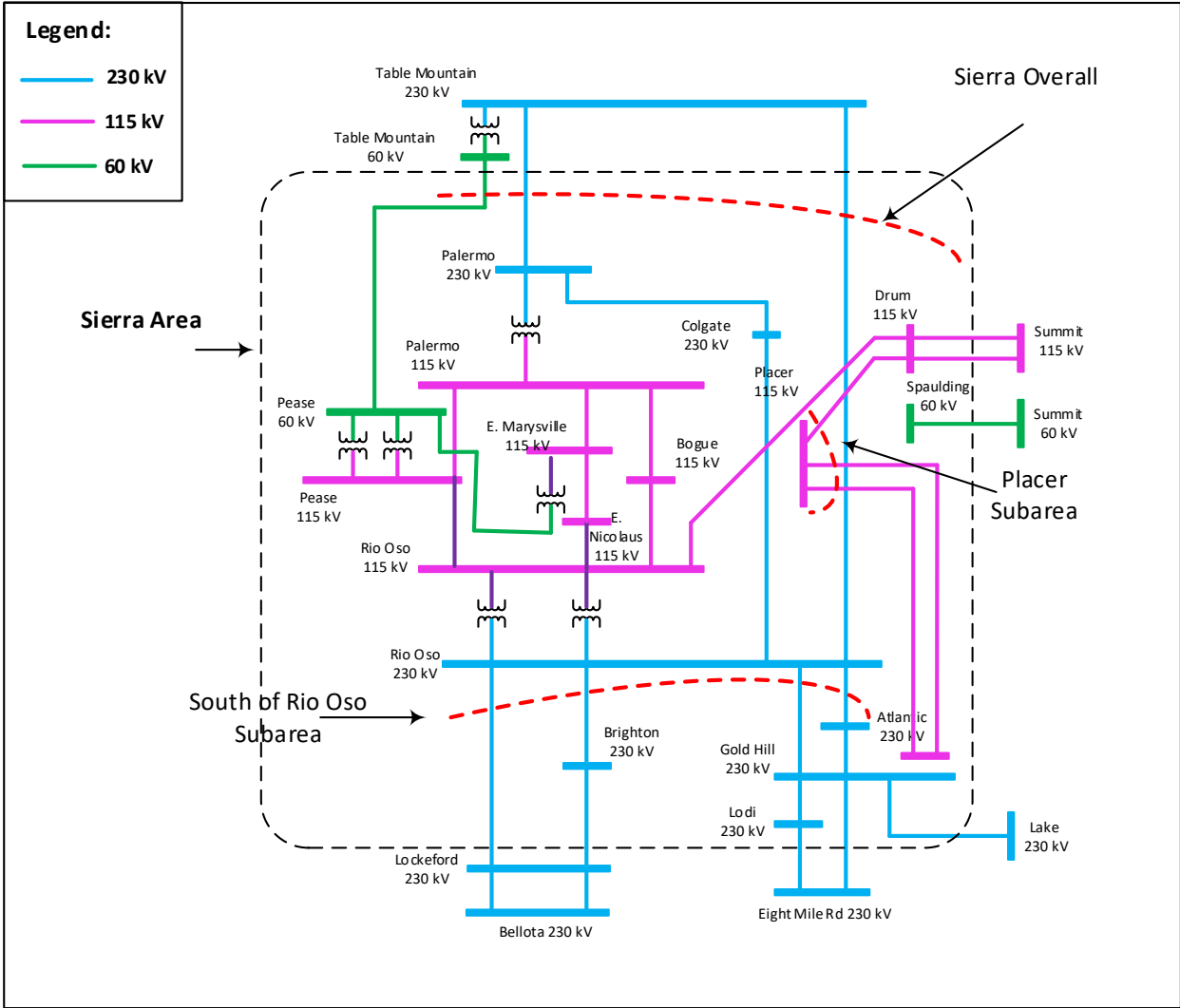
Subrina Sultana Noureen

Regional Transmission Engineer

Stakeholder Call

April 11<sup>th</sup> , 2024

# Sierra Area Transmission System & LCR Sub-areas



# New major transmission projects

<b>Project Name</b>	<b>Expected ISD</b>
Rio Oso 230/115 kV Transformer Upgrades	June 2025
Rio Oso Area 230 kV Voltage Support	June 2025
East Marysville 115/60 kV	Jan 2028
Gold Hill 230/115 kV Transformer Addition	June 2029
Reconductor Rio Oso–SPI Jct–Lincoln 115kV line	December 2029
Atlantic 230/60 kV transformer voltage regulator	May 2026

Based on Transmission Development Forum October 2023 Meeting Update

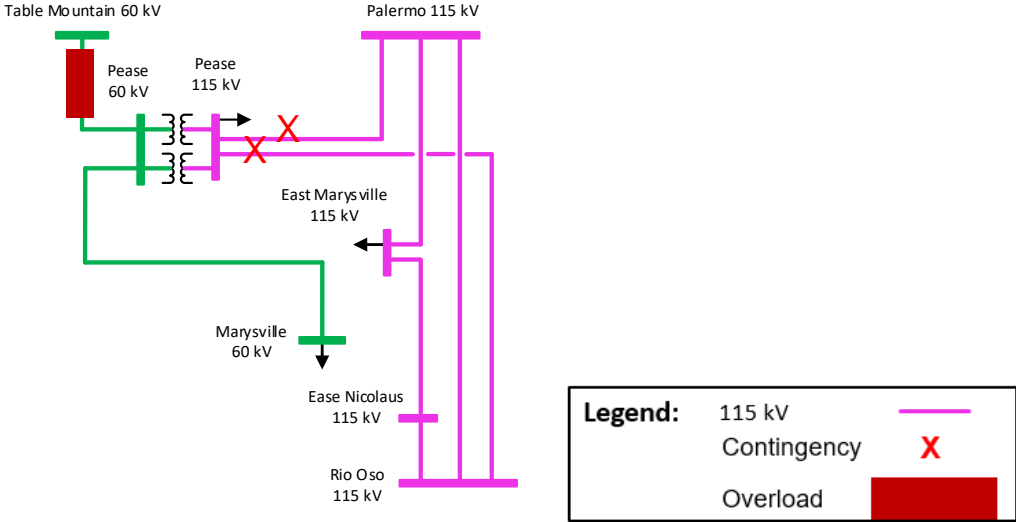
## Sierra Area Overall: Load and Resources

Load (MW)	2025	Generation (MW)	Aug NQC	At Peak
Gross Load	1941	Market/Net Seller	699	699
AAEE	-17	Battery	5	5
Behind the meter DG	0	MUNI/QF	1221	1221
<b>Net Load</b>	<b>1924</b>	Solar	0	0
Transmission Losses	76	Existing 20-minute Demand Response	0	0
Pumps	0	Mothballed	0	0
<b>Load + Losses + Pumps</b>	<b>2000</b>	<b>Total</b>	<b>1925</b>	<b>1925</b>

## Sierra Area Overall: Load and Resources

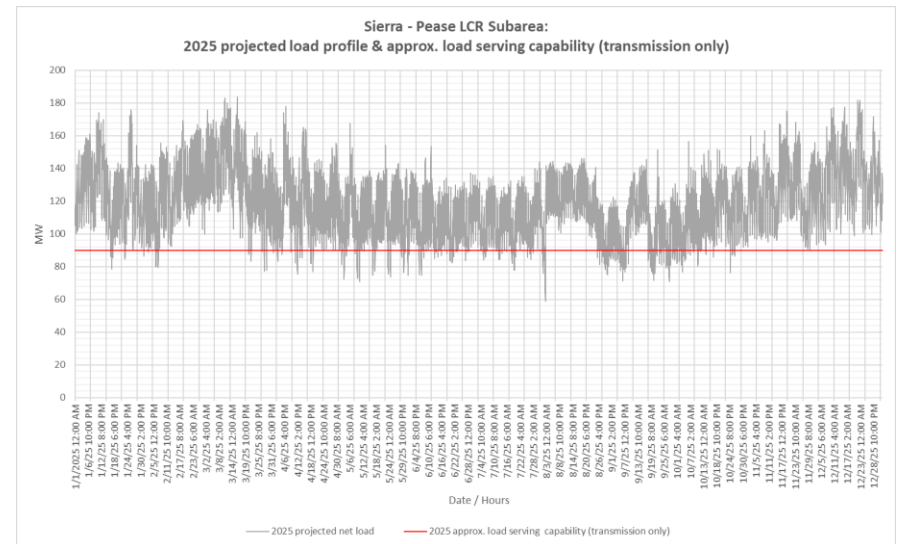
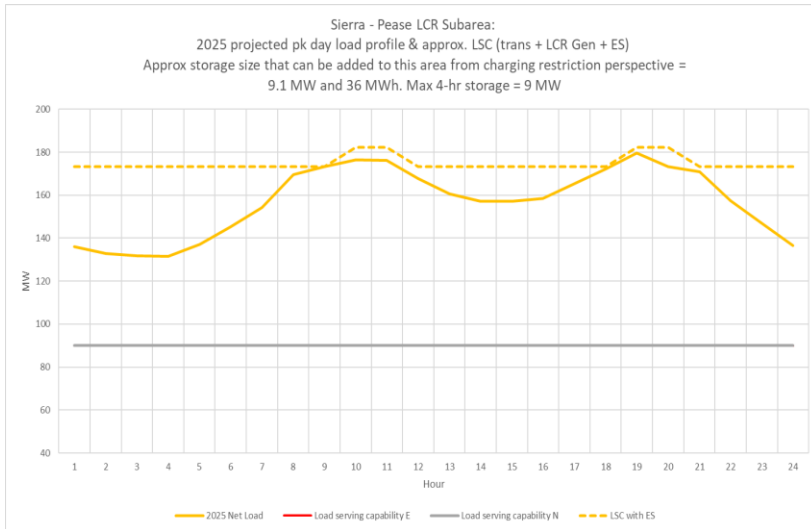
Load (MW)	2029	Generation (MW)	Aug NQC	At Peak
Gross Load	1939	Market/Net Seller	699	699
AAEE	-32	Battery	5	5
Behind the meter DG	0	MUNI/QF	1221	1221
<b>Net Load</b>	<b>1907</b>	Solar	0	0
Transmission Losses	71	Existing 20-minute Demand Response	0	0
Pumps	0	Mothballed	0	0
<b>Load + Losses + Pumps</b>	<b>1978</b>	<b>Total</b>	<b>1925</b>	<b>1925</b>

# Pease Sub-Area: Requirements

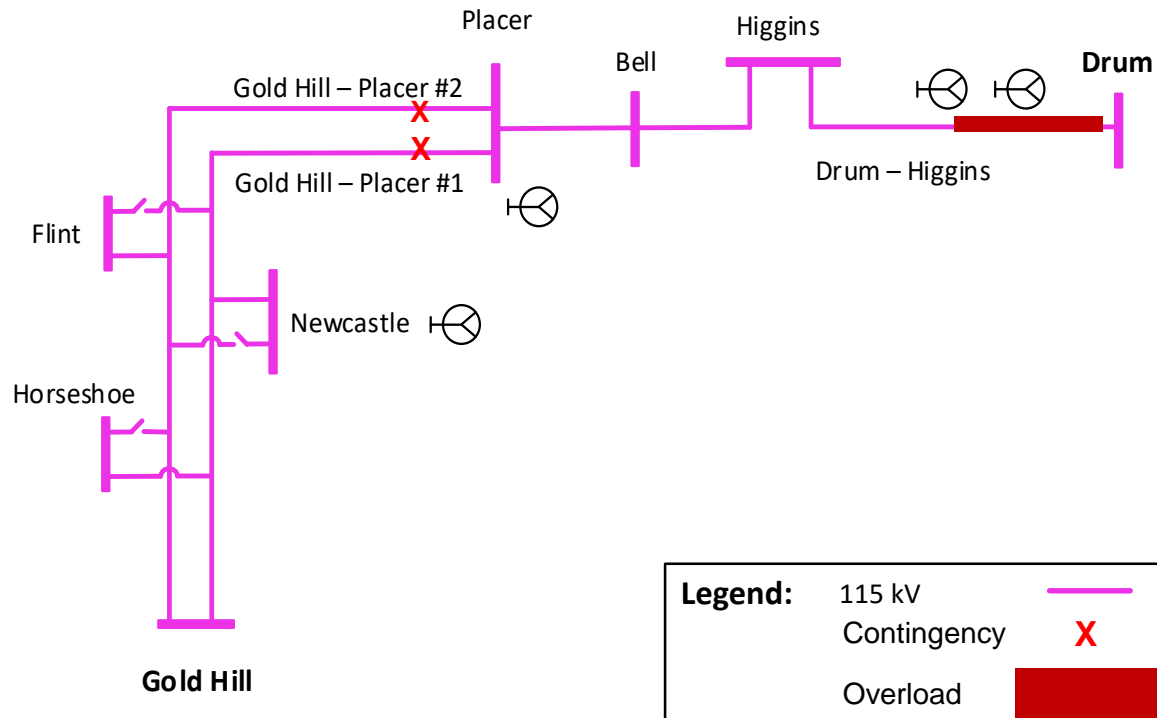


Year	Category	Limiting Facility	Contingency	LCR (MW) (Deficiency)
2025	P6, P7	Table Mountain – Pease 60 kV line	Palermo – Pease 115 kV and Pease – Rio Oso 115 kV	109
2029	No LCR due to implementation of East Marysville 115/60 kV Project			No requirements

# Pease Sub-area: Load Profiles



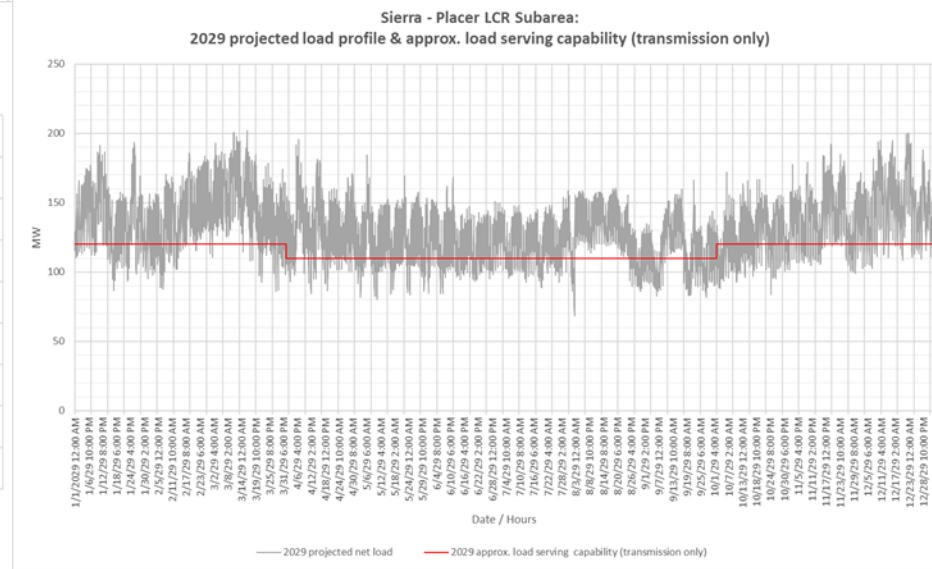
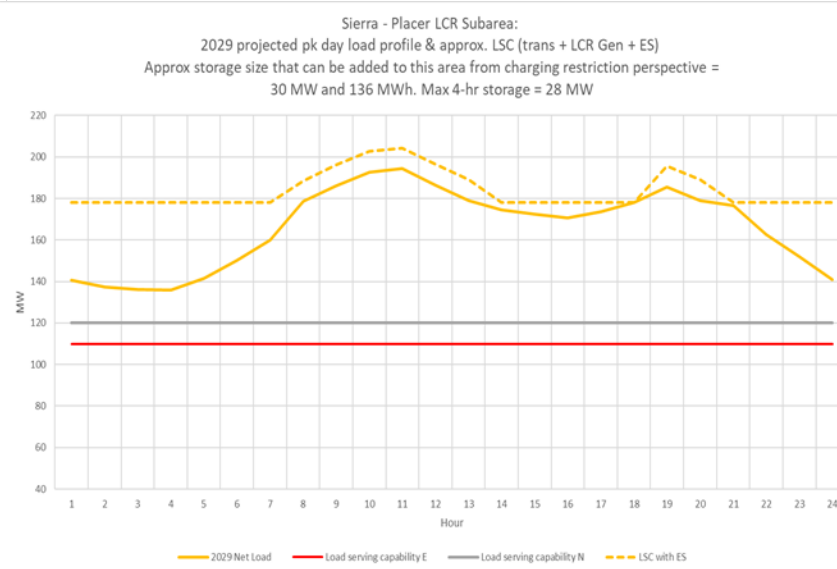
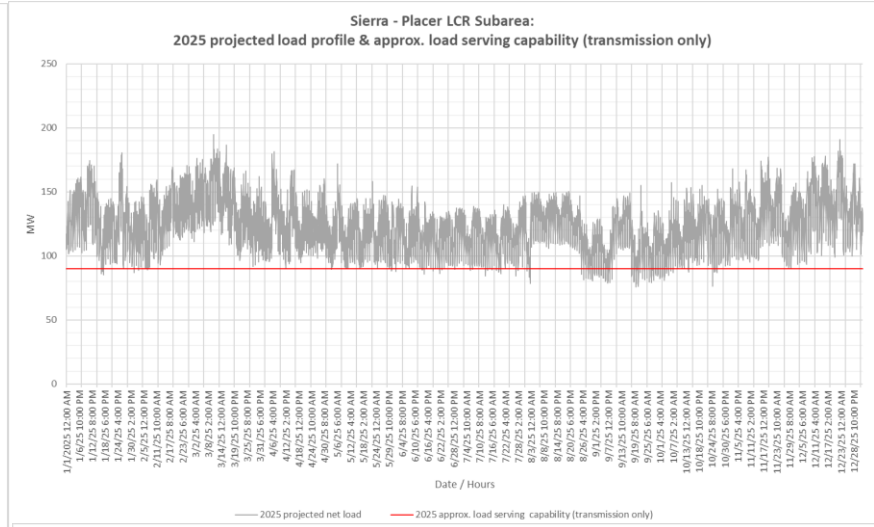
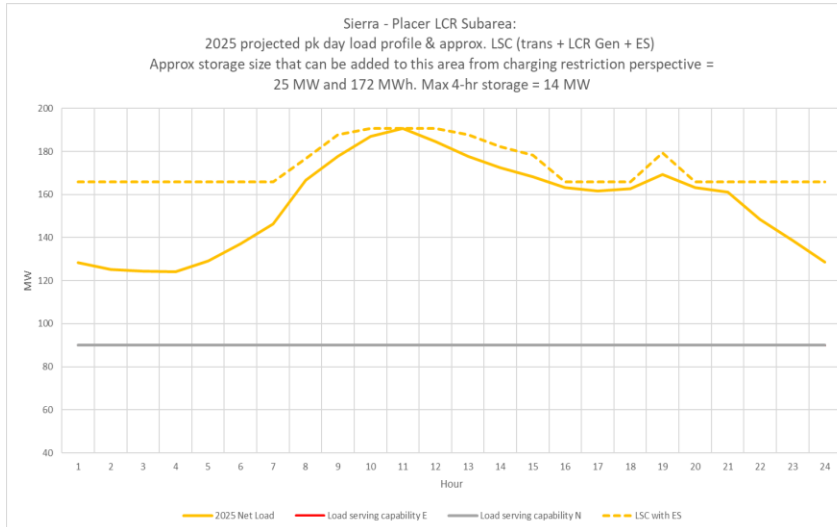
# Placer Sub-Area: Requirements



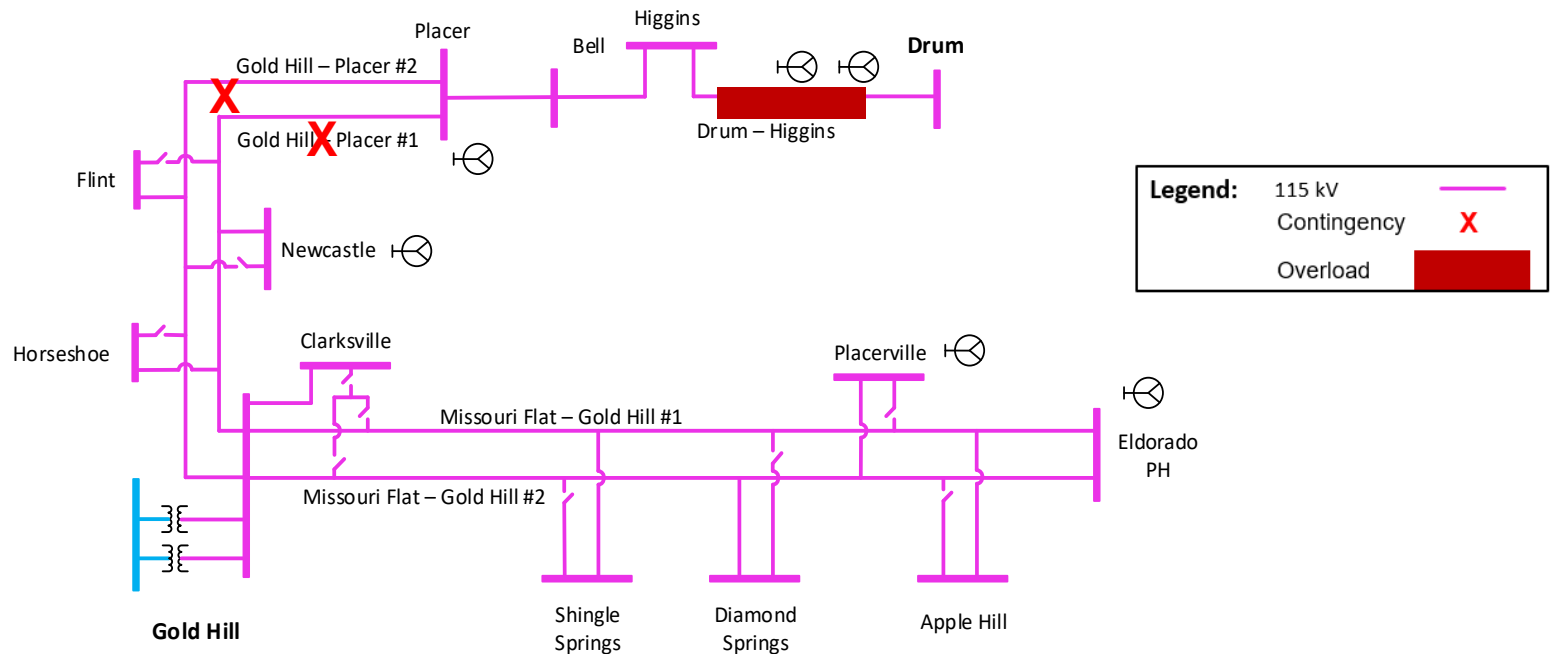
Year	Category	Limiting Facility	Contingency	LCR (MW) (Deficiency)
2025	P6, P7	Drum – Higgins 115 kV line	Gold Hill – Placer #1 and #2 115 kV lines	125 (61)
2029	P6, P7	Drum – Higgins 115 kV line	Gold Hill – Placer #1 and #2 115 kV lines	115 (51)



# Placer Sub-area: Load Profiles

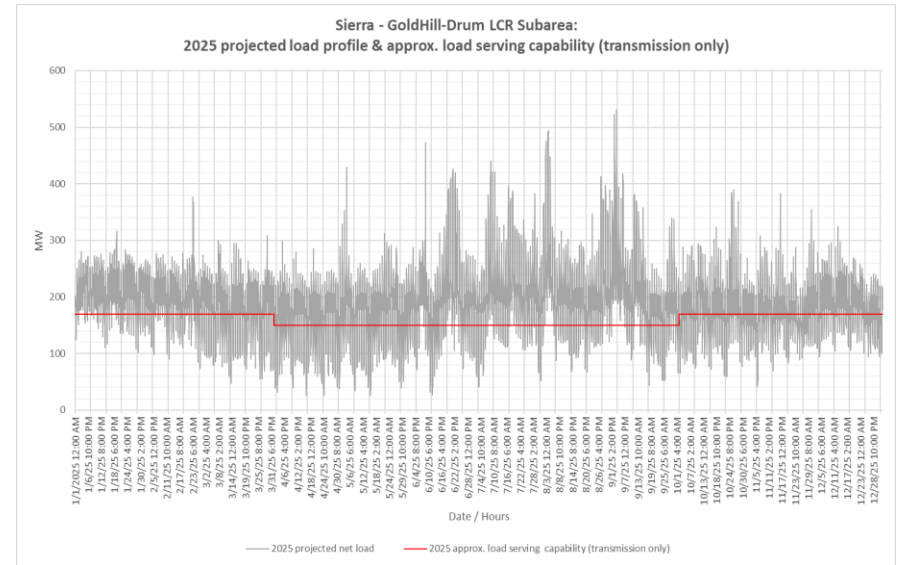
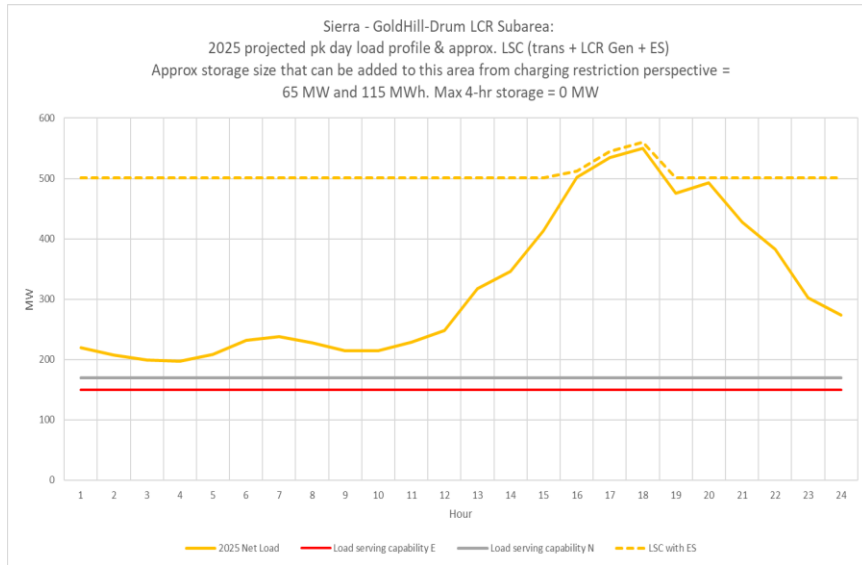


# Gold Hill - Drum Sub-Area: Requirements

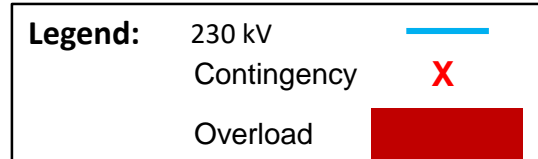
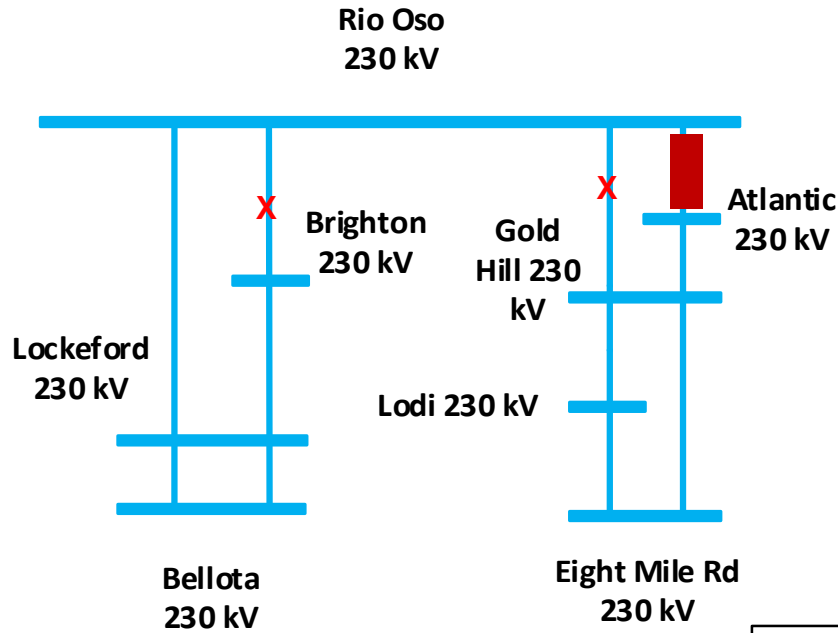


Year	Category	Limiting Facility	Contingency	LCR (MW) (Deficiency)
2025	P6	Drum – Higgins 115 kV	Gold Hill 230/115 kV #1 and Gold Hill 230/115 kV #2 Transformers	461 (386)
2029	No LCR due to implementation of Gold Hill 230/115 kV Transformer Addition Project			No requirements

# Gold Hill - Drum Sub-area: Load Profiles

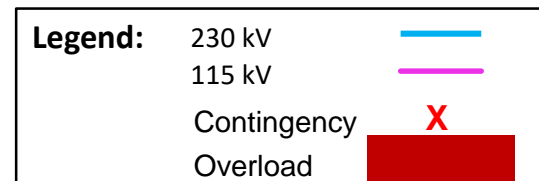
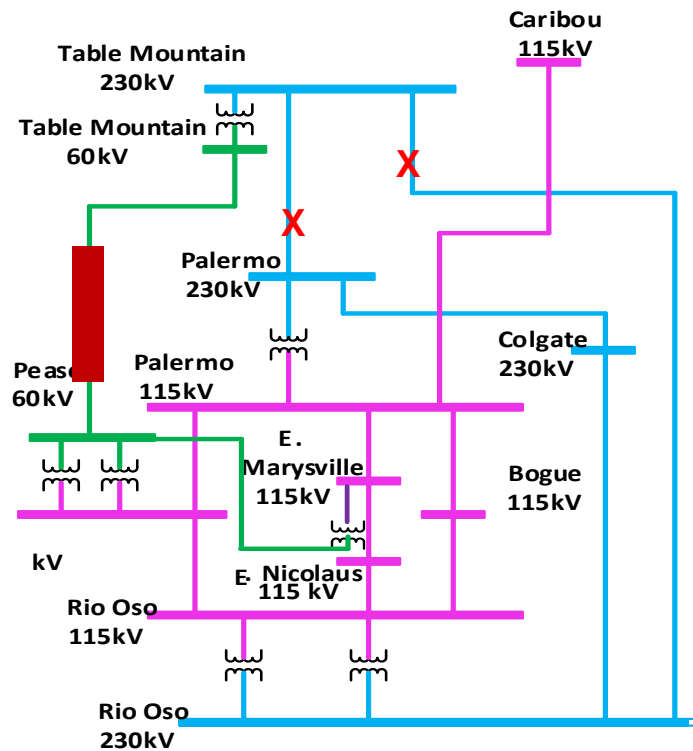


# South of Rio Oso Sub-Area: Requirements



Year	Category	Limiting Facility	Contingency	LCR (MW) (Deficiency)
2025	P6	Rio Oso – Atlantic 230 kV Line	Rio Oso – Gold Hill 230 kV Rio Oso – Brighton 230 kV	453
2029	P6	Rio Oso – Atlantic 230 kV Line	Rio Oso – Gold Hill 230 kV Rio Oso – Brighton 230 kV	471

# Sierra Overall: Requirements



Year	Category	Limiting Facility	Contingency	LCR (MW) (Deficiency)
2025	P6, P7	Table Mountain – Pease 60 kV Line	DCTL of Table Mtn. – Palermo and Table Mtn. Rio Oso 230 kV lines	1532
2029	P6, P7	Table Mountain – Pease 60 kV Line	DCTL of Table Mtn. – Palermo and Table Mtn. Rio Oso 230 kV lines	1885

## Changes from 2024 to 2025

Sub-area	2024		2025	
	Load	LCR	Load	LCR
Pease	150	86	186	108
Placer	168	90 (30)	197	125 (61)
Gold Hill - Drum	474	377 (307)	566	461 (386)
South of Rio Oso	N/A*	375	N/A	453
Sierra Overall	N/A*	1212	N/A	1532
Total	1758	1519 (307)	2000	1918 (386)

The load forecast for the overall area has increased between years 2024 and 2025 and the overall LCR requirement has increased due to load forecast increase and due to the flow-through nature of the area.

*N/A\*=Flow-through area. No defined load pocket.*

## Changes from 2028 to 2029

Sub-area	2028		2029	
	Load	LCR	Load	LCR
Pease	N/A	N/A	N/A	N/A
Placer	175	107 (47)	194	115 (51)
Gold Hill - Drum	491	397 (327)	N/A	N/A
South of Rio Oso	N/A*	369	N/A	471
Sierra Overall	N/A*	1415	N/A	1885
Total	1843	1742 (327)	1978	1936 (51)

The load forecast for the overall area has increased between years 2028 and 2029 and the overall LCR requirement has increased as well due to load increase.

No LCR for Gold Hill-Drum sub-area, due to implementation of Gold Hill 230/115 kV Transformer Addition Project.

*N/A\*=Flow-through area. No defined load pocket.*

## Sierra Area Total LCR Need

Study Year	Existing Generation Capacity Needed (MW)	Deficiency (MW)	Total MW Need
2025	1532	386	1918
2029	1885	51	1936