

Blythe Area Regional Transmission Study

Blythe Energy Project - Phase II

California Energy Commission

Imperial Irrigation District

Southern California Edison

Western Area Power Administration

Metropolitan Water District

CAISO

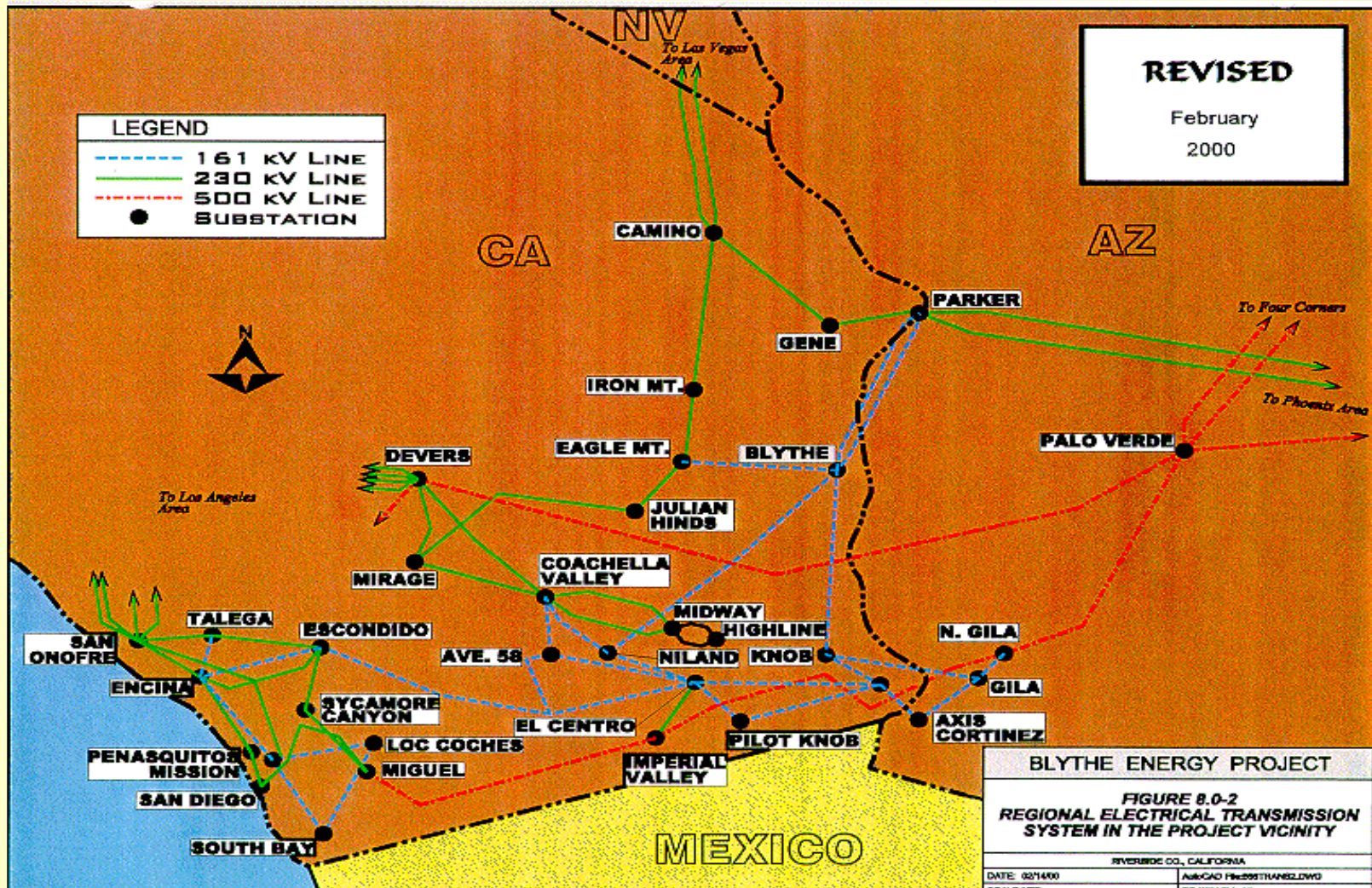
Arizona Public Service

SDG&E

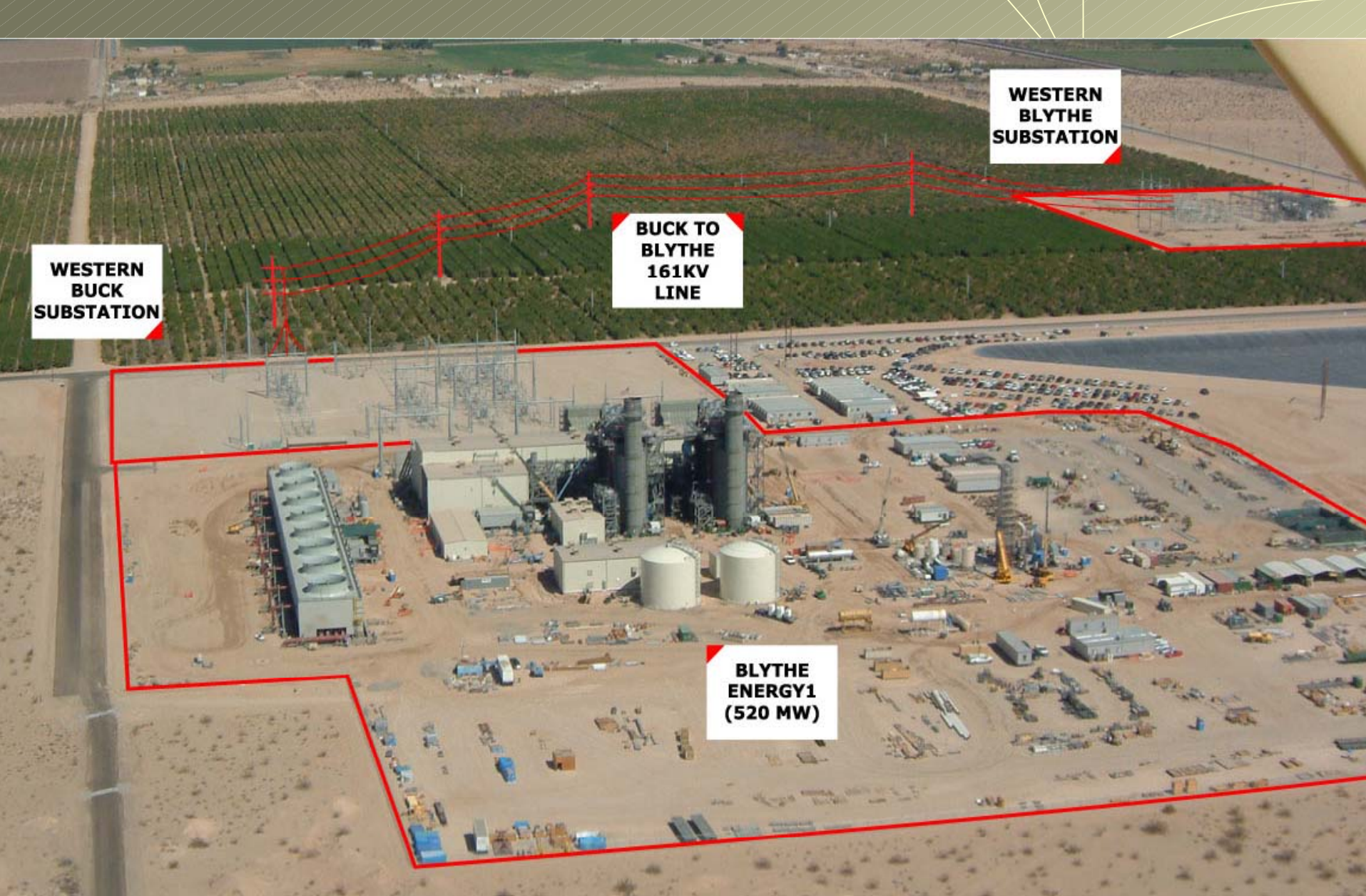
Caithness Blythe II, LLC



BLYTHE AREA TRANSMISSION



BART
January 17, 2003



**WESTERN
BLYTHE
SUBSTATION**

**WESTERN
BUCK
SUBSTATION**

**BUCK TO
BLYTHE
161KV
LINE**

**BLYTHE
ENERGY1
(520 MW)**

BART
January 17, 2003

Blythe Energy Project – Phase II

Caithness Blythe II, LLC



PART
January 17, 2003



Multi-Shaft GUD Power Plant View with Turbine House



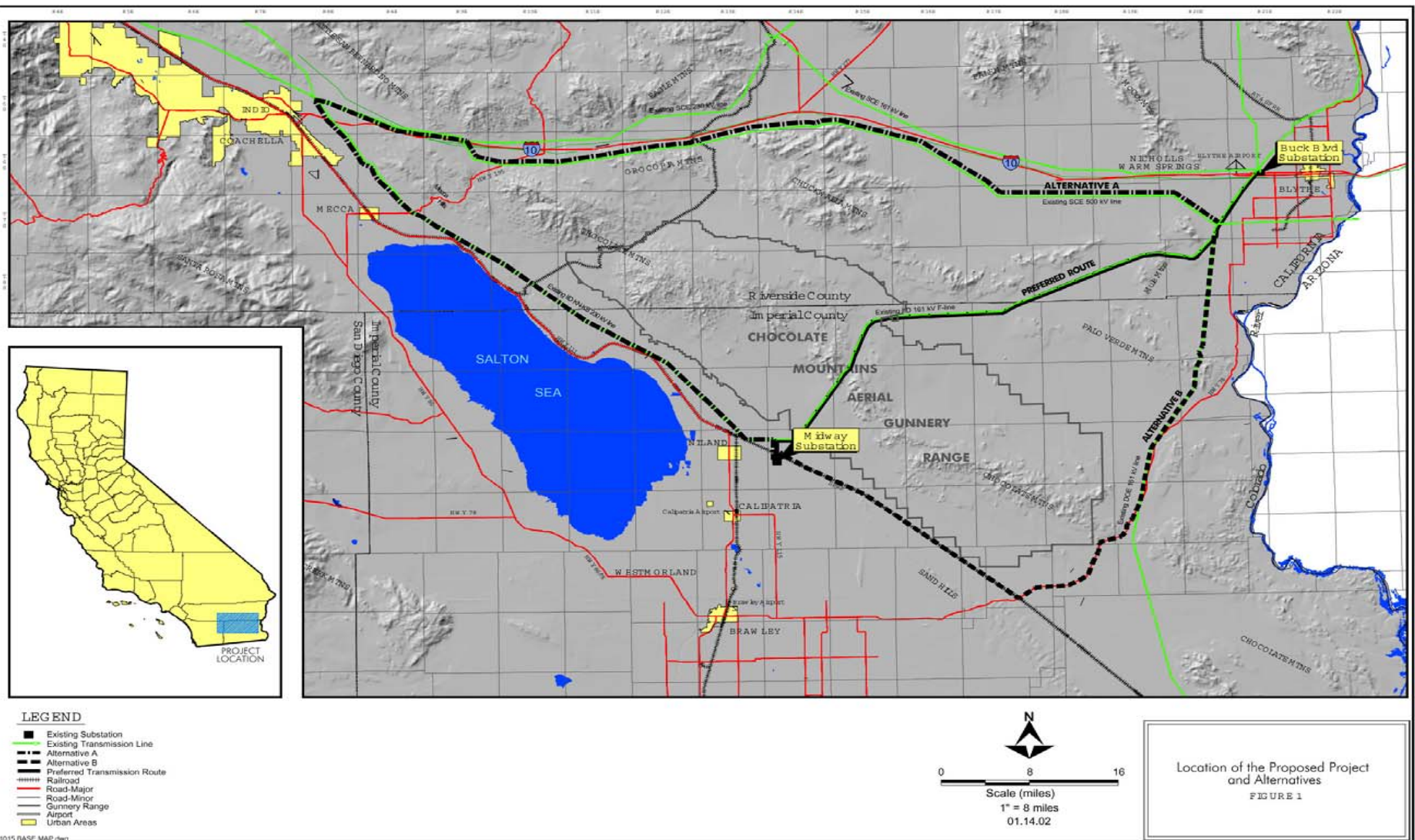
January 17, 2003



BART Purpose Review

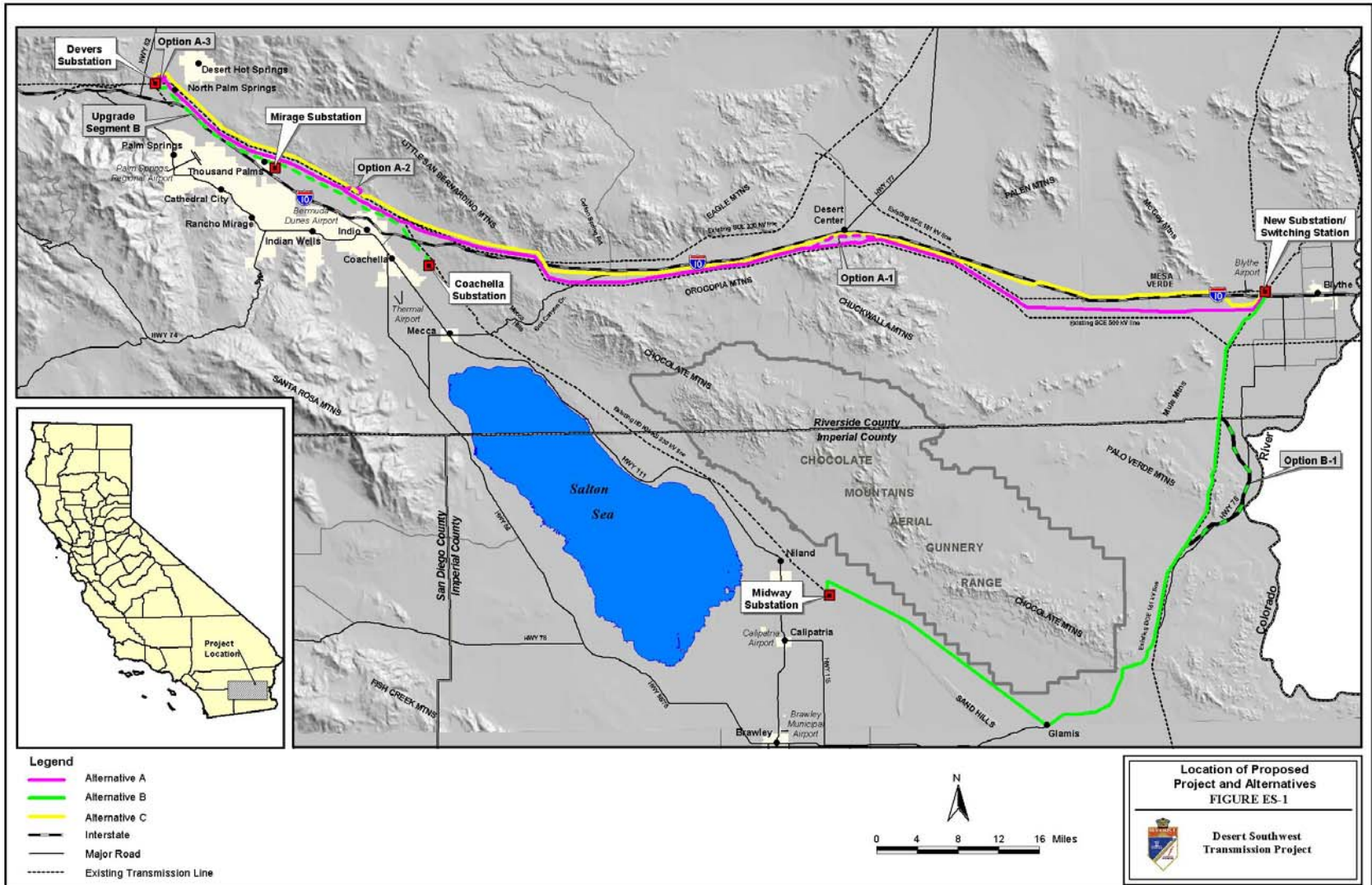
- ◆ Review the Blythe Area Interconnected Transmission System w/o and w/BEP2
- ◆ Joint Participation of Study Team
- ◆ 2006 Base Case Development
- ◆ Study Plan Mutually Reviewed
- ◆ Base Case Benchmark Analysis (pre-BEP2)
- ◆ Review of Transmission Options w/BEP2
- ◆ Conclusions, Findings and Final Report

IID BN-BS Line



January 17, 2000

Desert Southwest Transmission Project



January 17, 2003

BART Process & Conclusions

- ◆ Four main transmission options, 230kV & 500 kV
- ◆ Multiple Sensitivities run to stress different paths
- ◆ Load Flows & Phase 1 Report are completed
- ◆ Phase 2 transient stability and short circuit analysis complete in March, 2003 for selected options
- ◆ BEP II CEC process scheduled for completion in third qtr 2003
- ◆ DSWTP EIS/CEQA process scheduled for completion third qtr 2003

BART

January 17, 2003