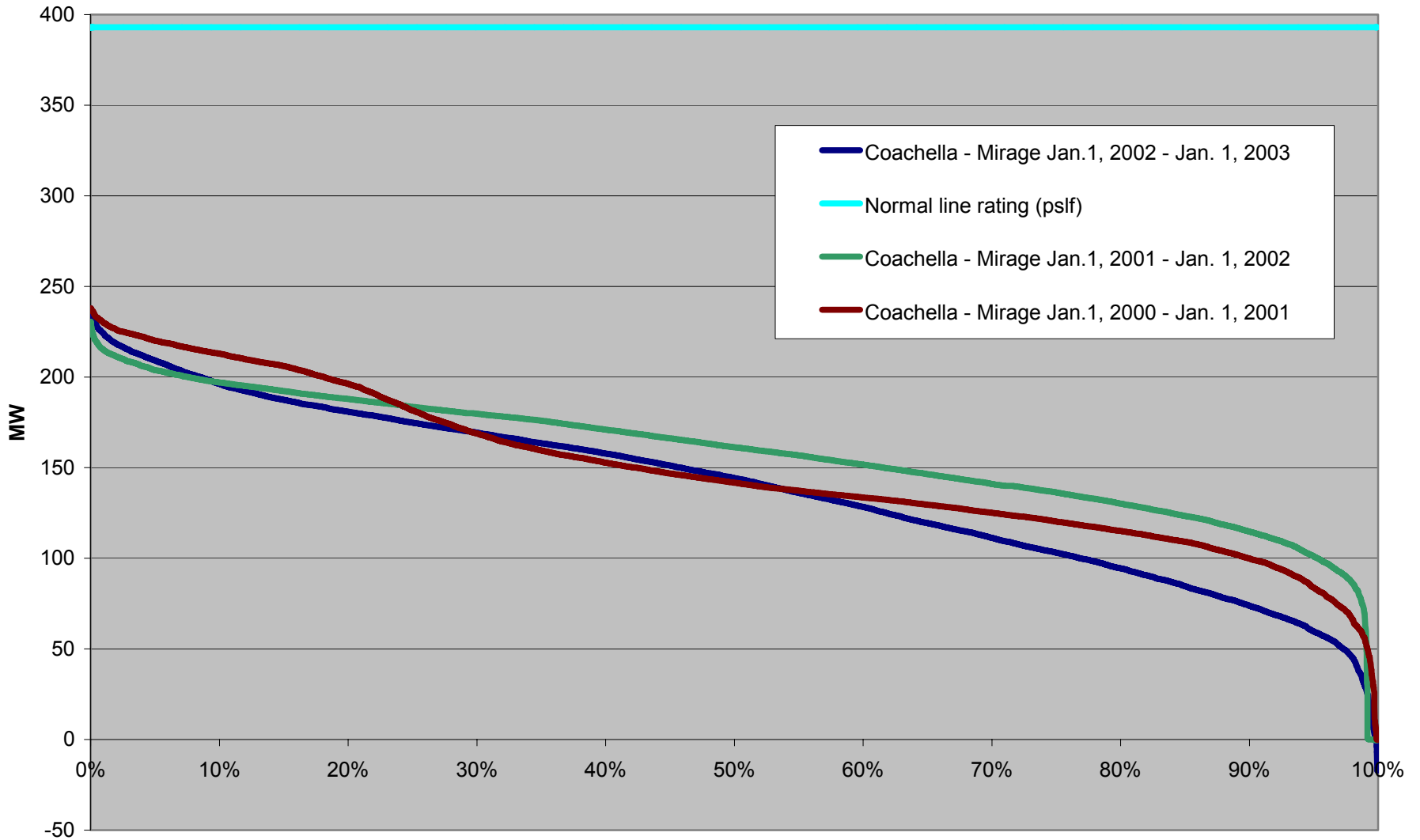
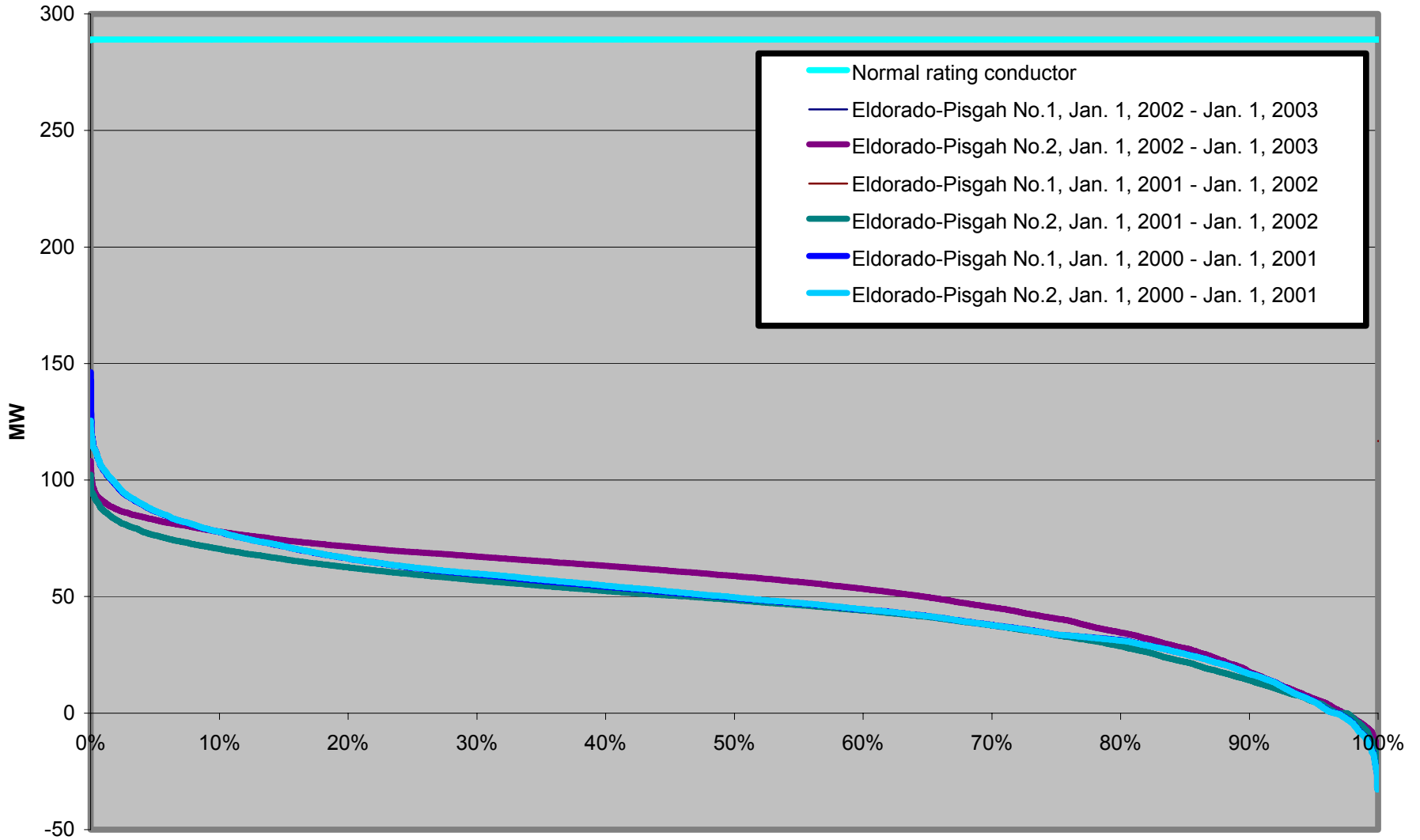


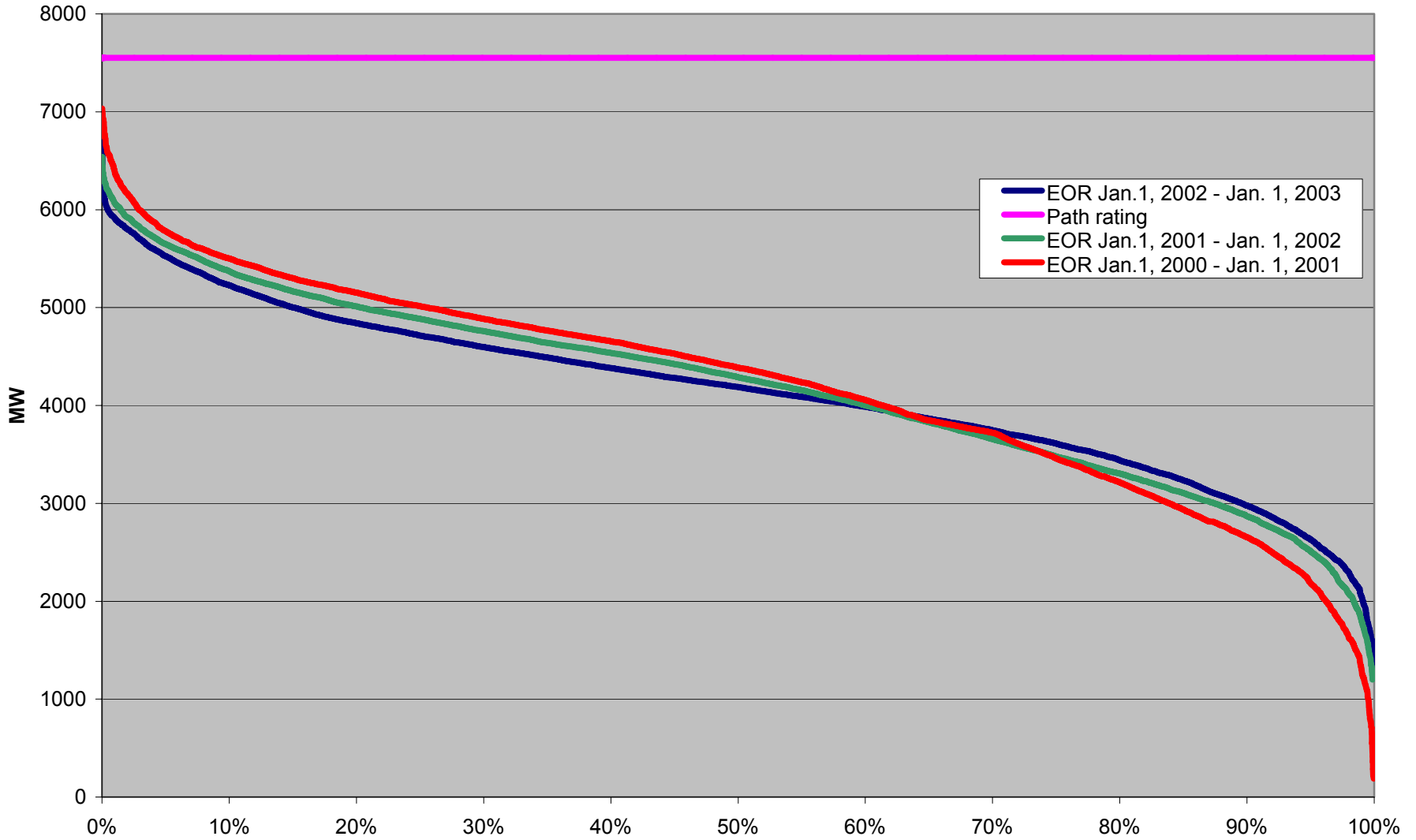
### Coachella - Mirage 230 kV line (metered at Mirage)



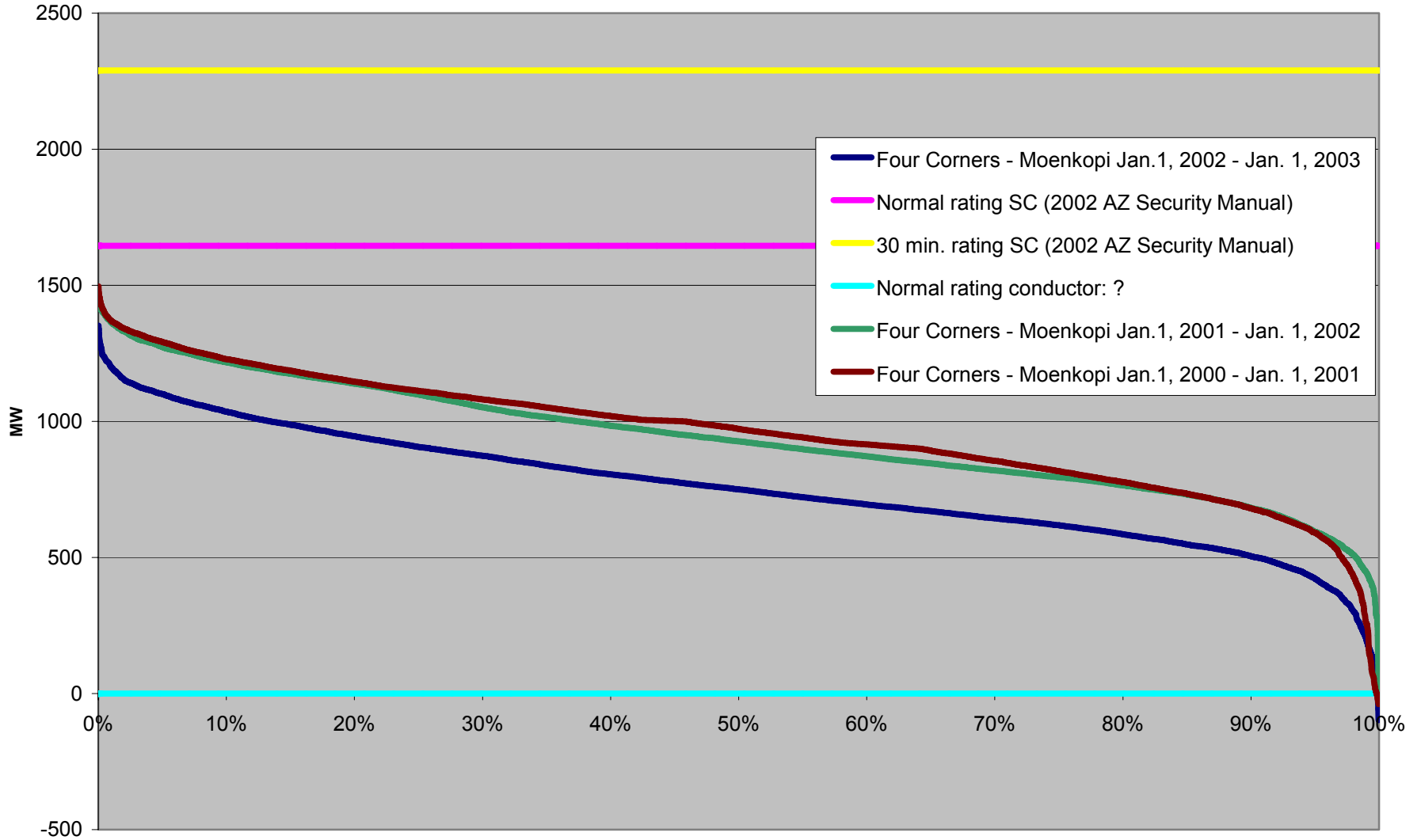
### Eldorado - Pisgah No. 1 & 2 230 kV lines (metered at Eldorado)



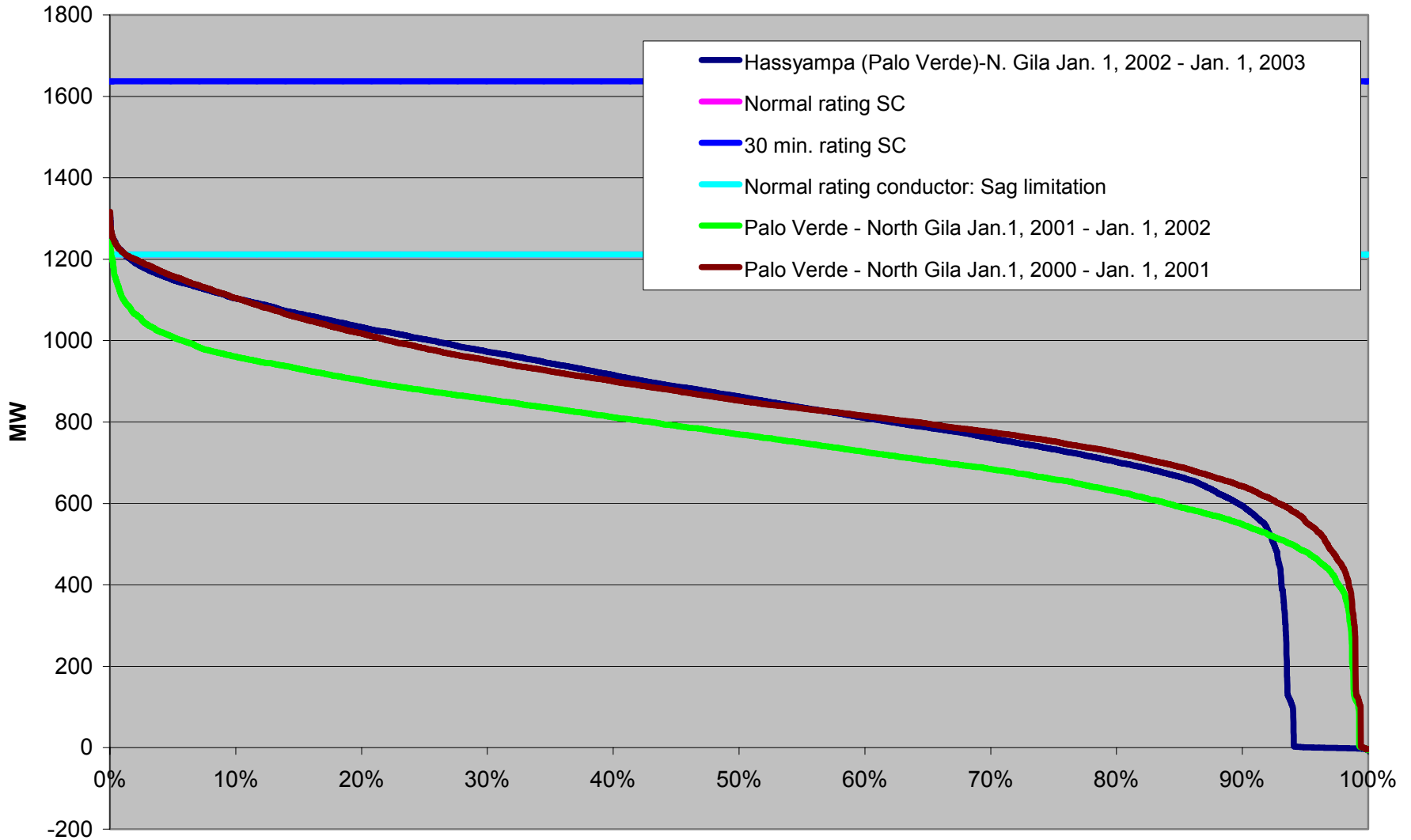
# East of River



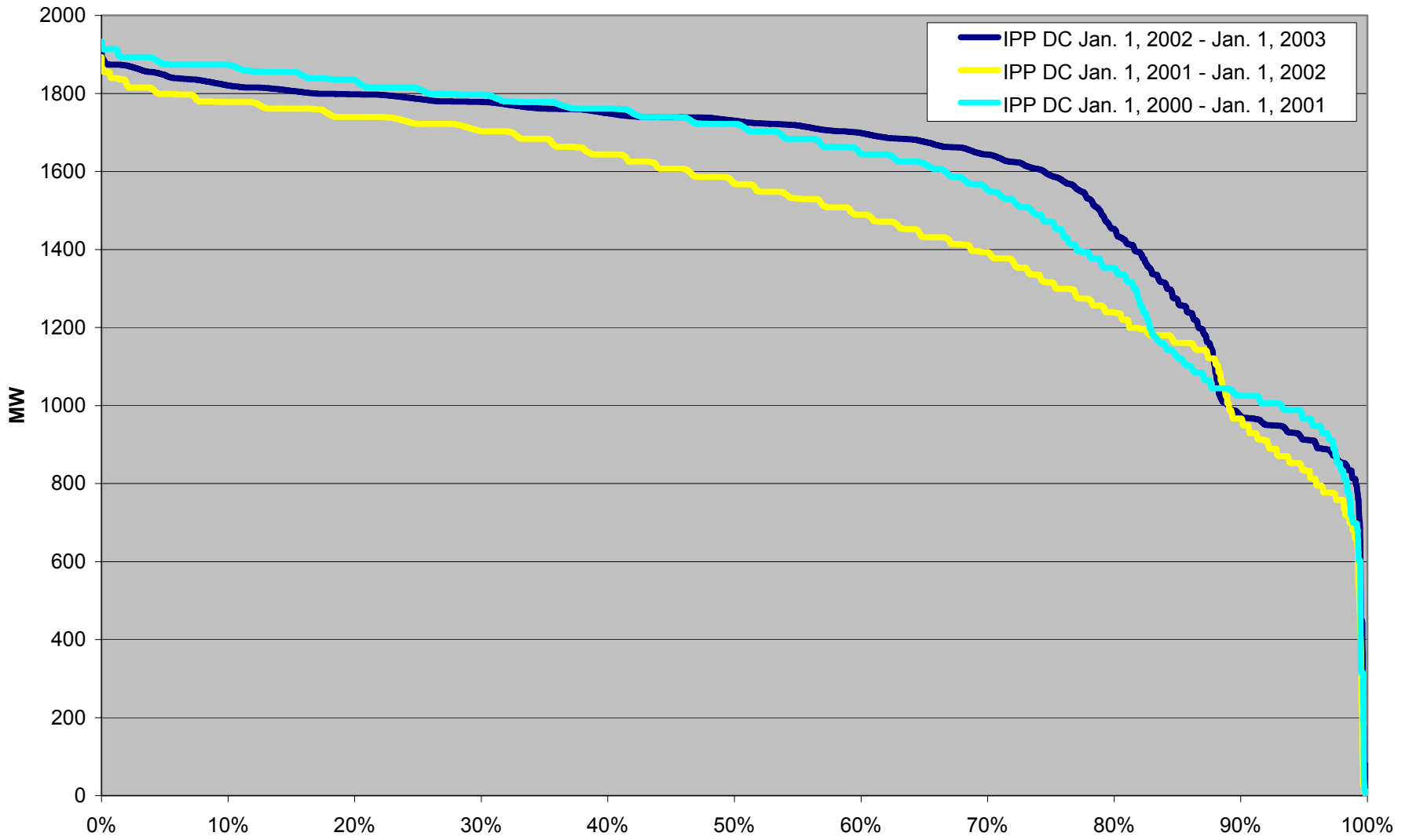
### Four Corners - Moenkopi 500 kV line (metered at Four Corners)



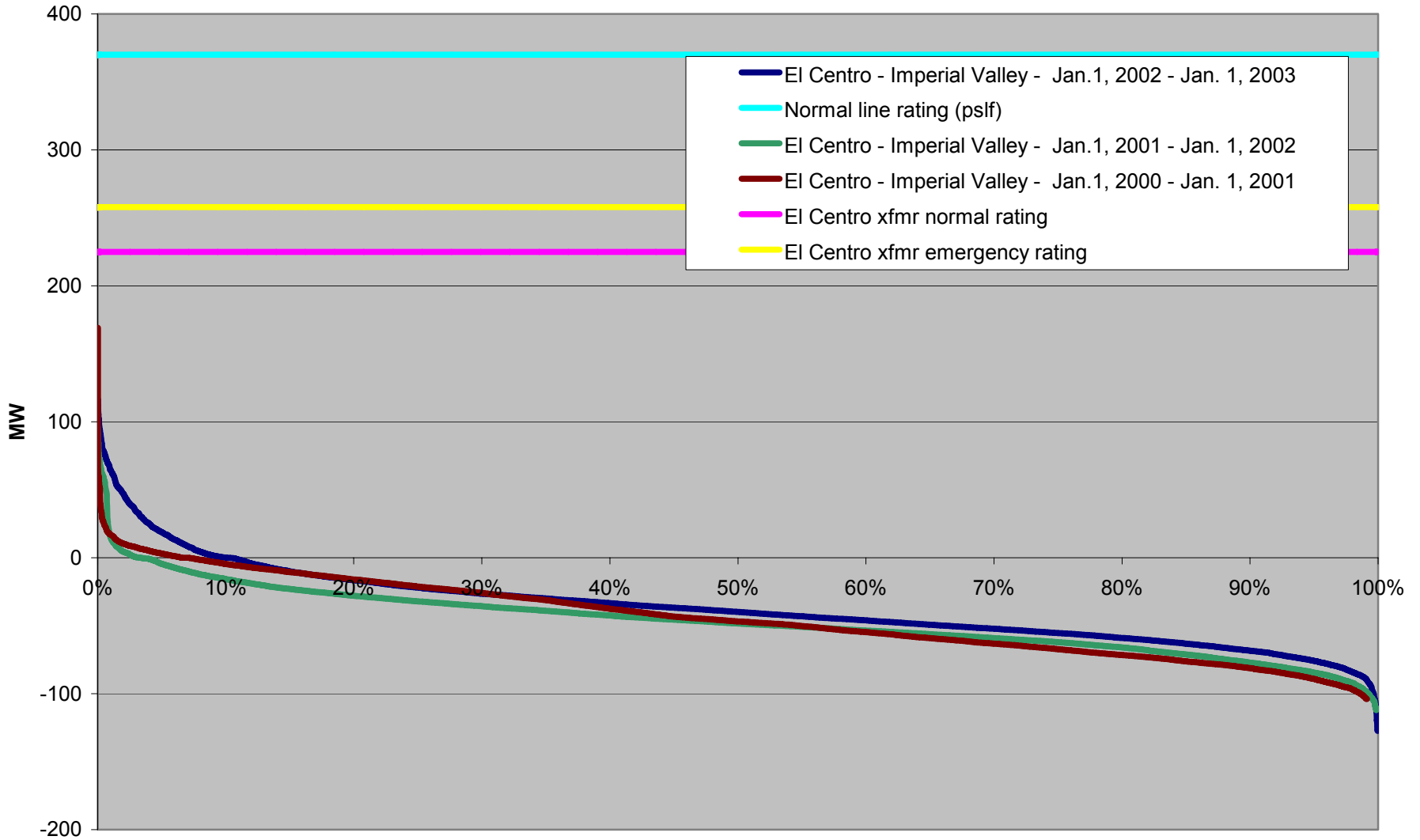
**Palo Verde-N.Gila 500 kV line (after Feb. 13, 2002: Hassyampa-N. Gila). Metered at Palo Verde**



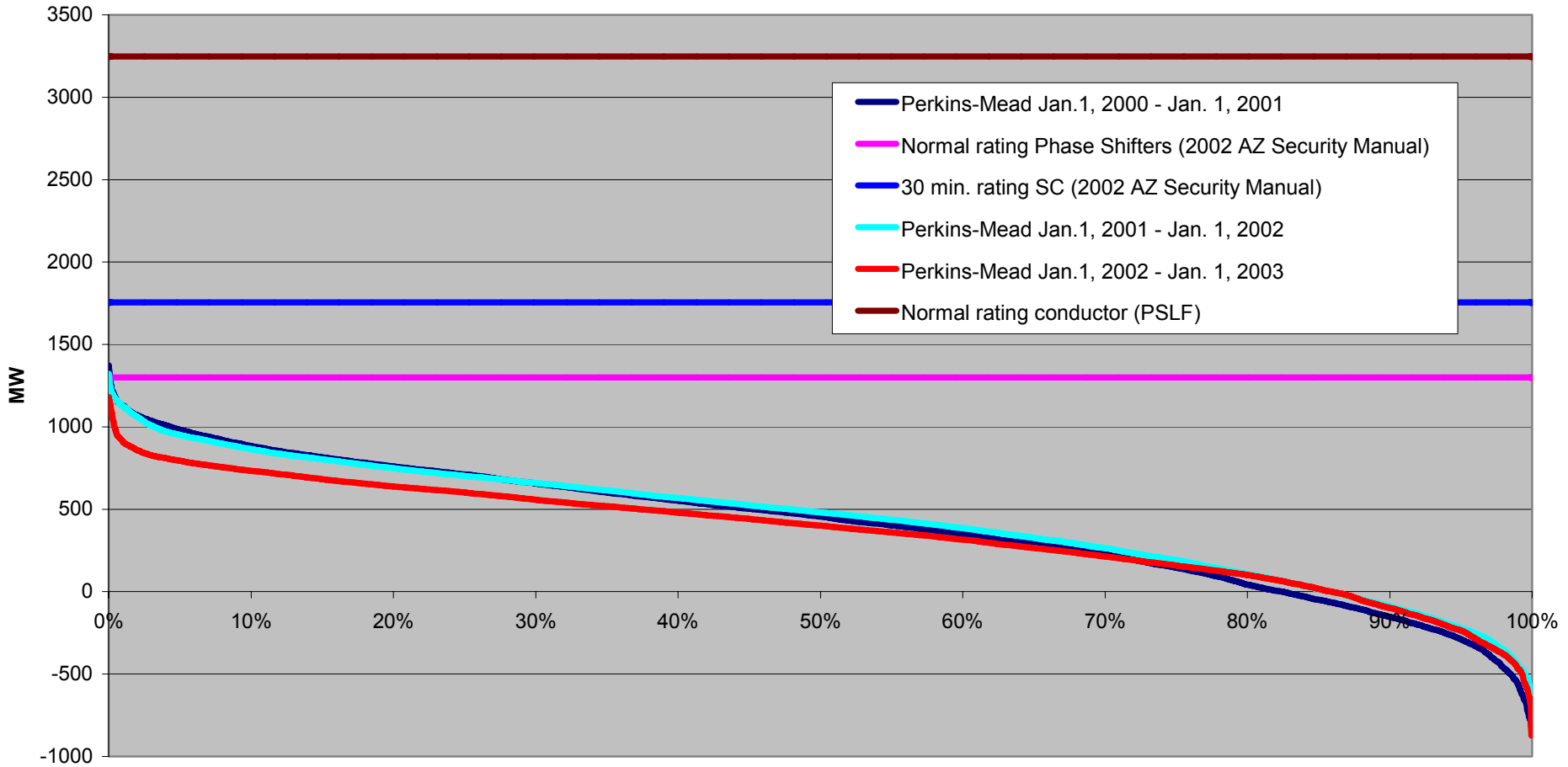
# IPP DC line



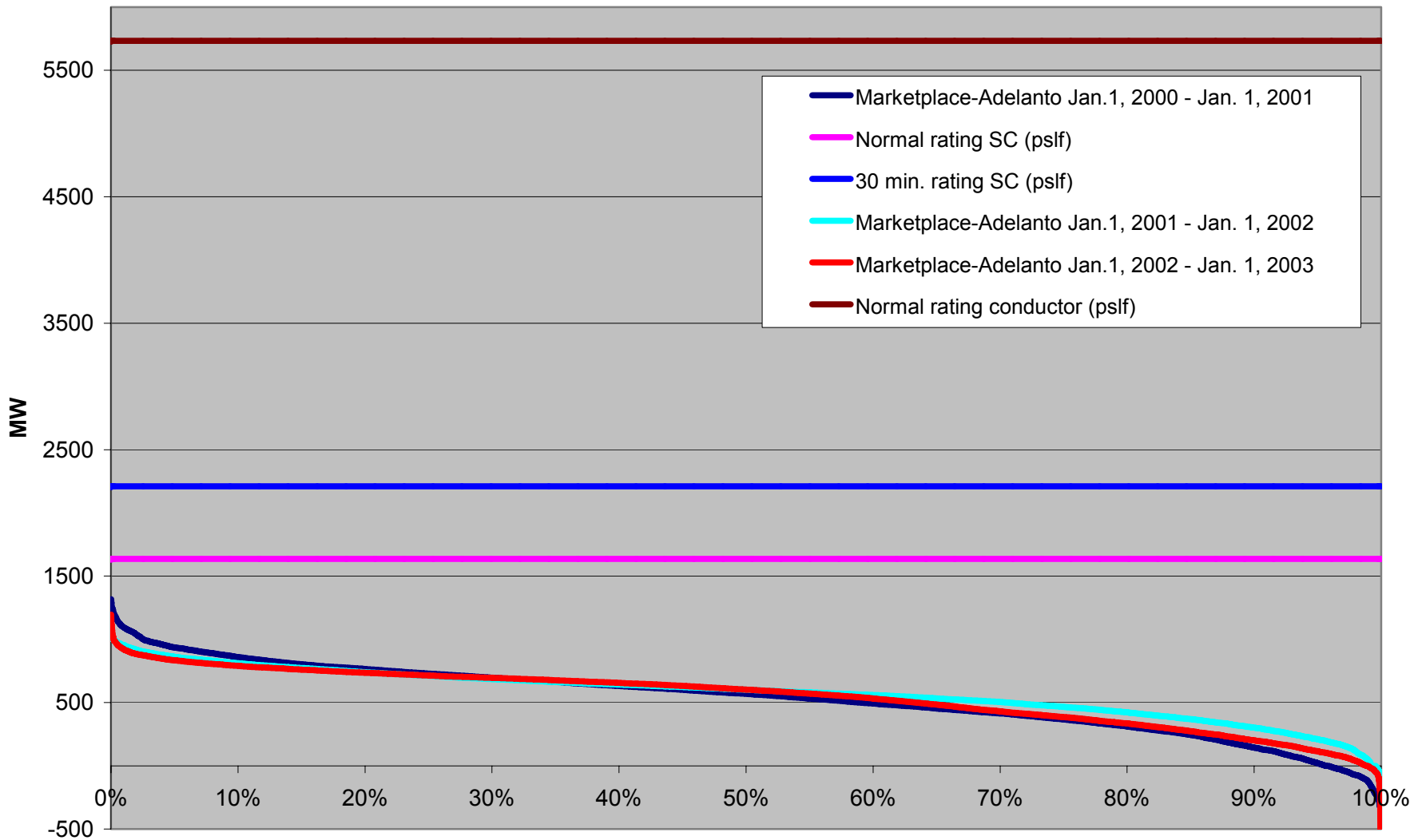
### El Centro - Imperial Valley 230 kV line (metered at IV)



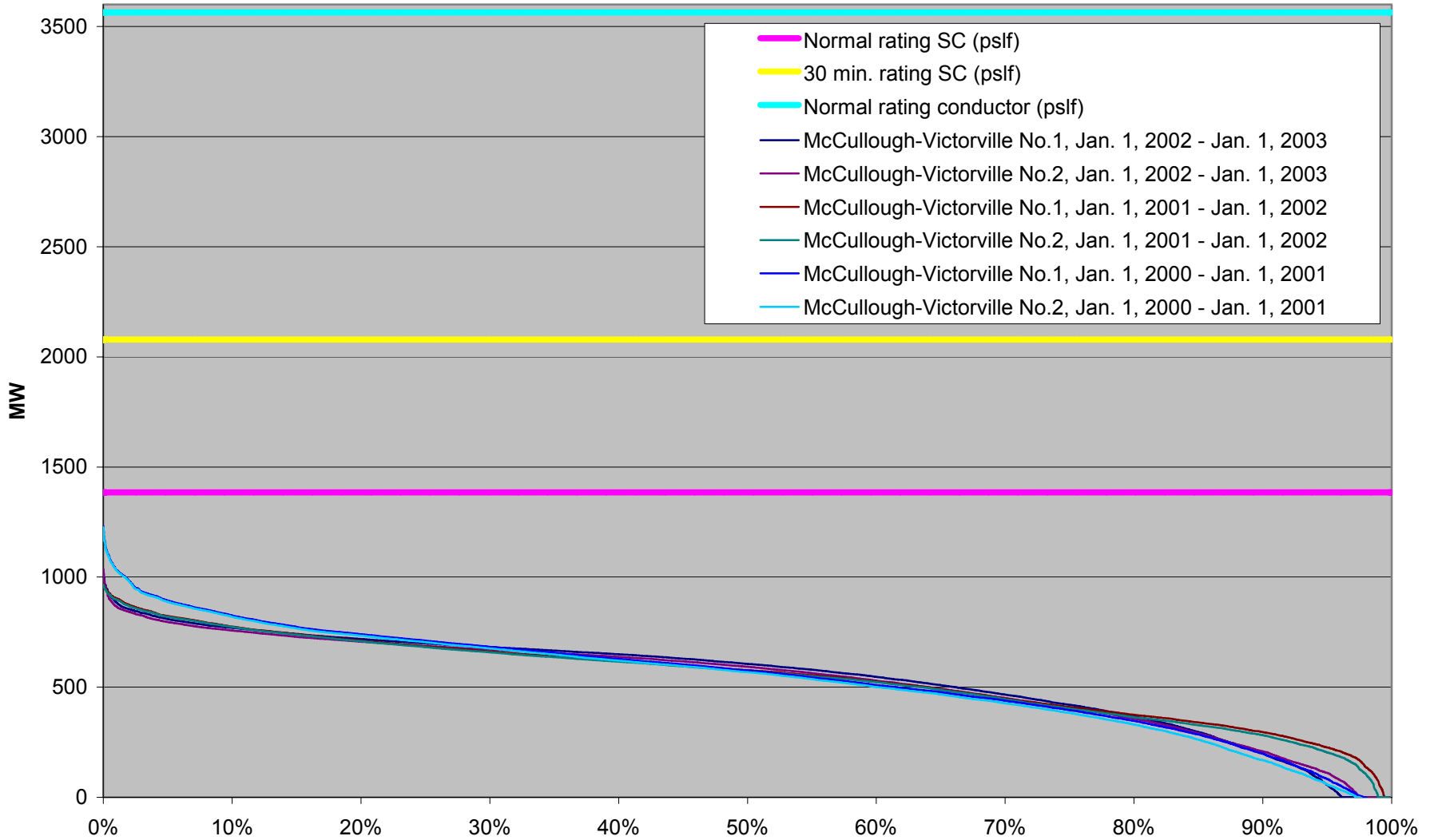
### Perkins-Mead 500 kV line (metered at Mead)



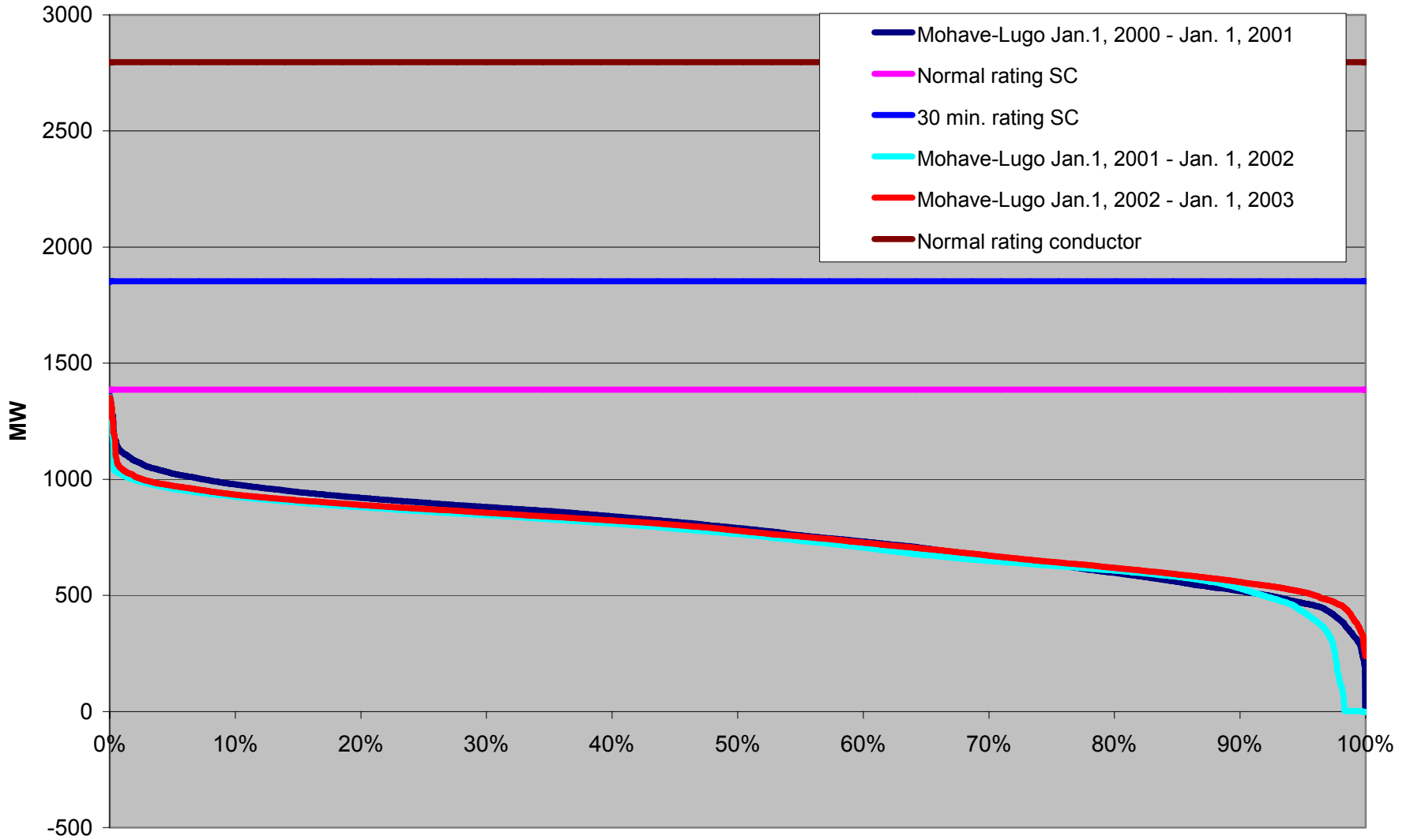
### Marketplace - Adelanto 500 kV line (metered at Adelanto)



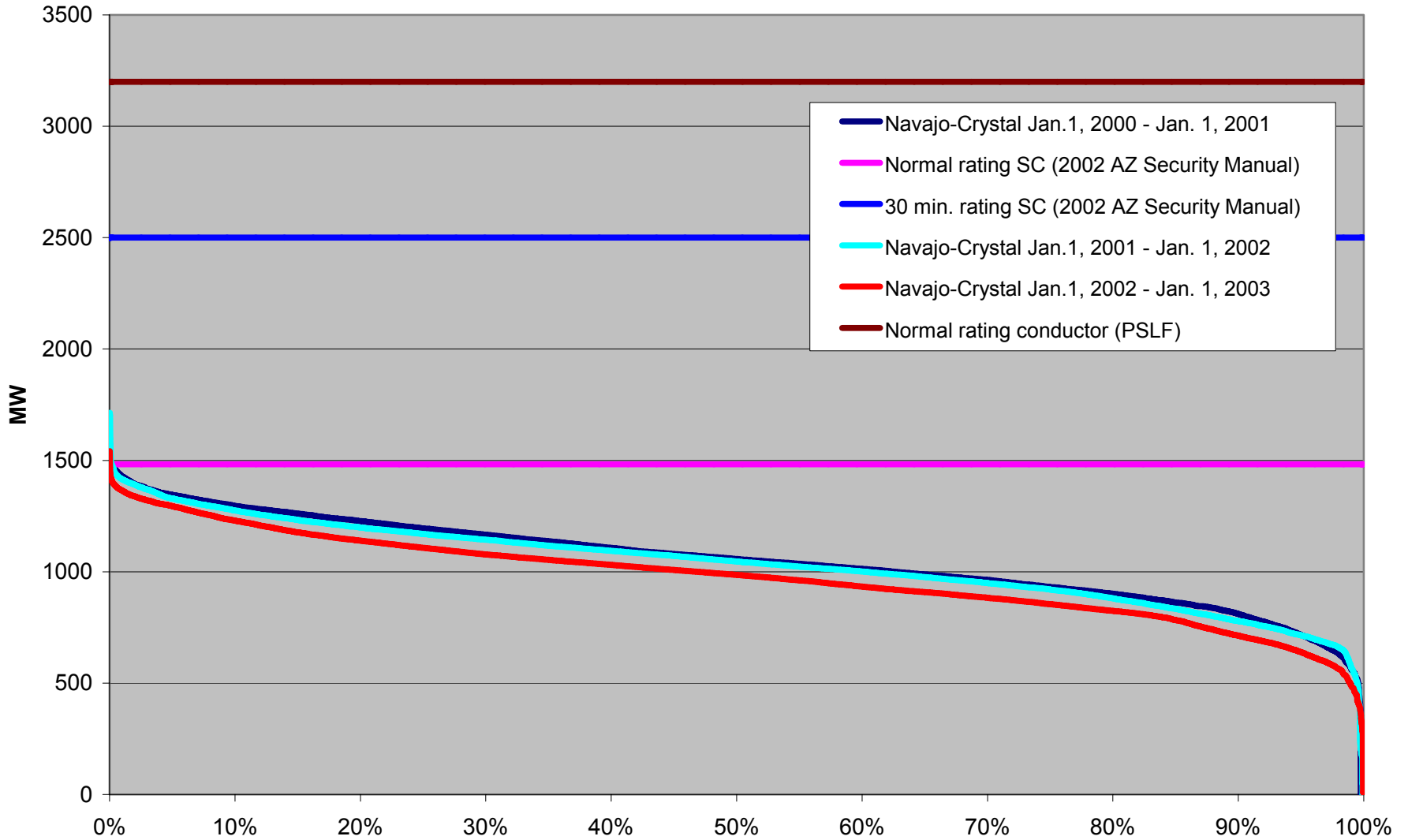
### McCullough - Victorville No. 1 & 2 500 kV lines (metered at McCullough)



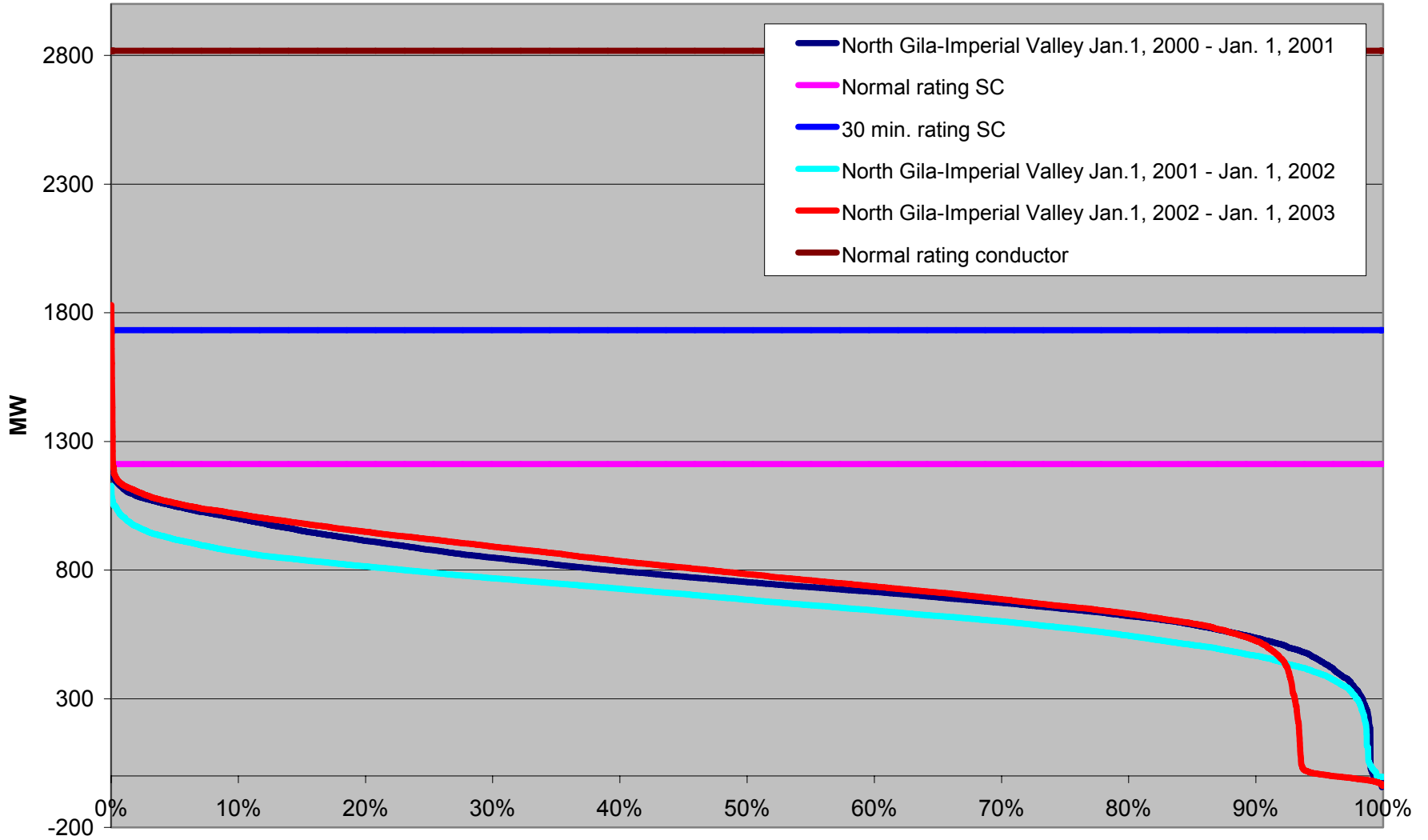
### Mohave - Lugo 500 kV line



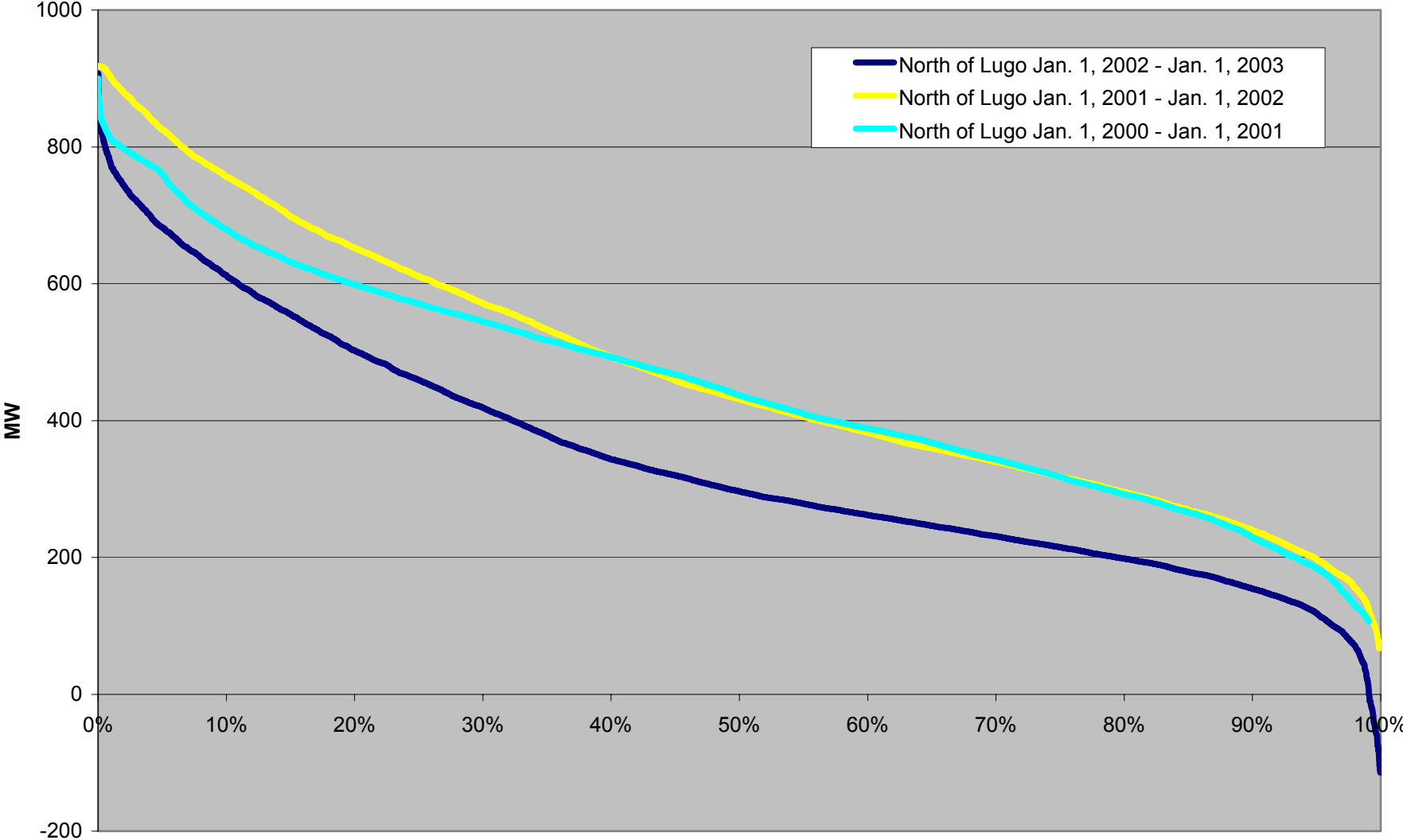
### Navajo-Crystal 500 kV line (metered at Navajo)



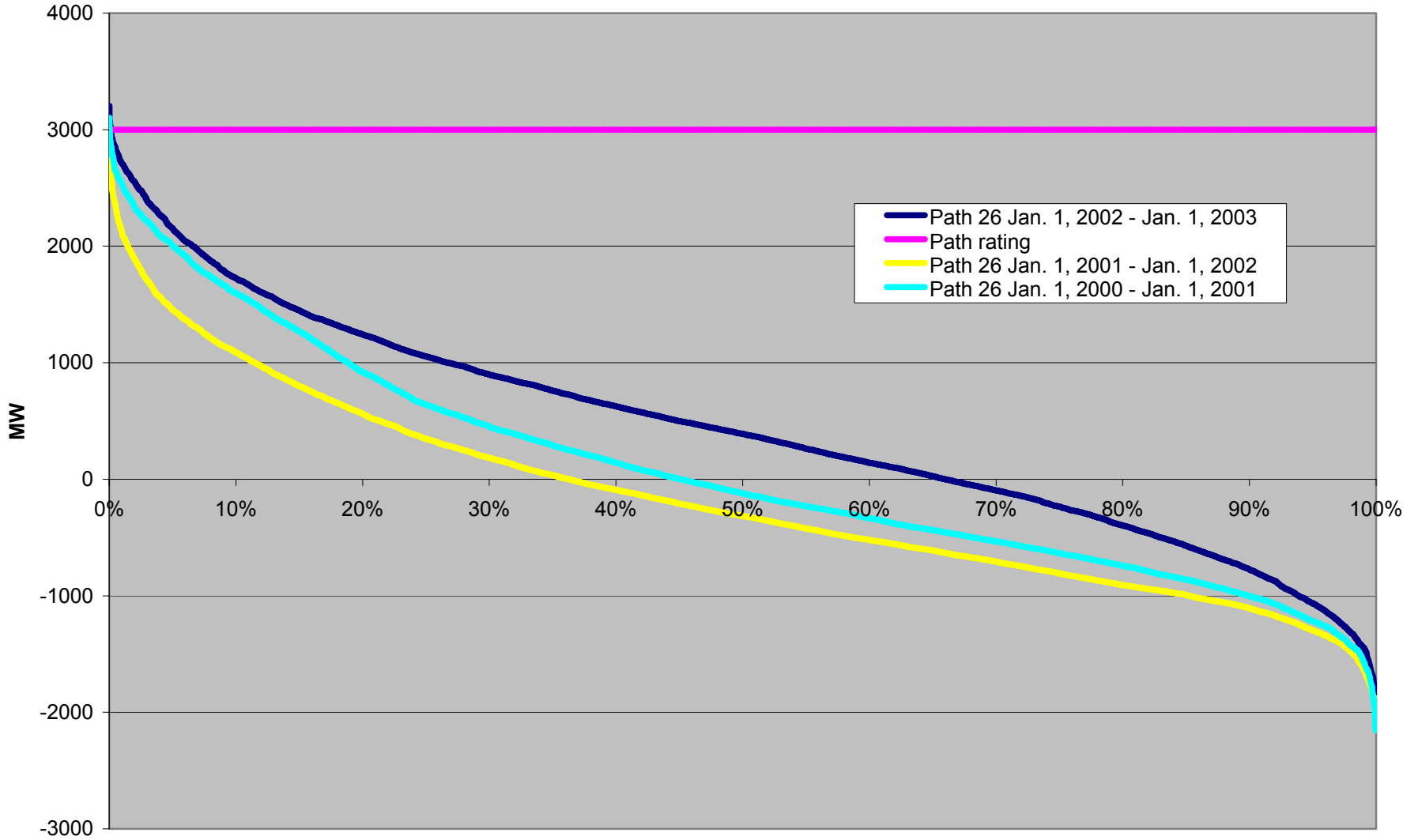
### North Gila-Imperial Valley 500 kV line (metered at North Gila)



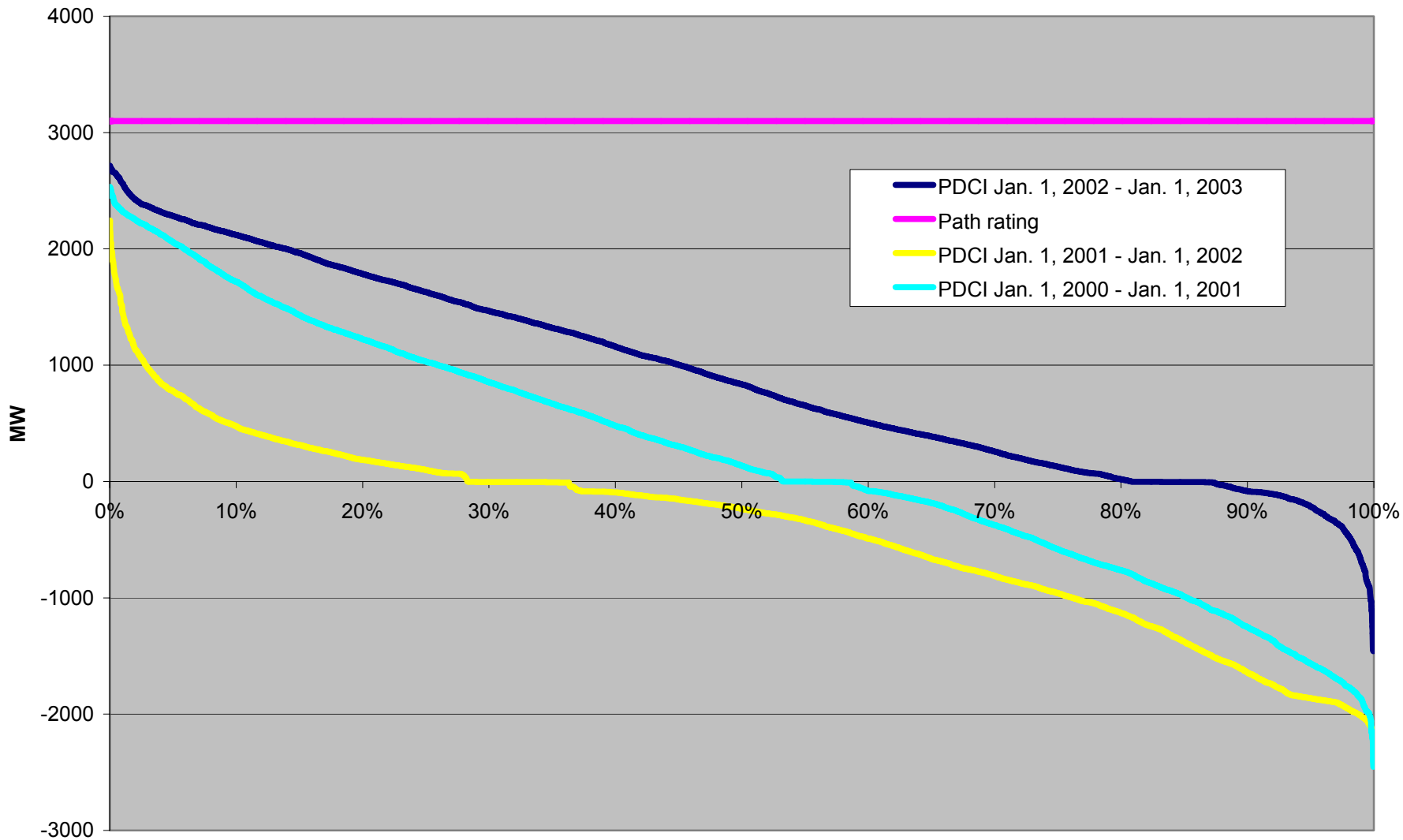
# North of Lugo



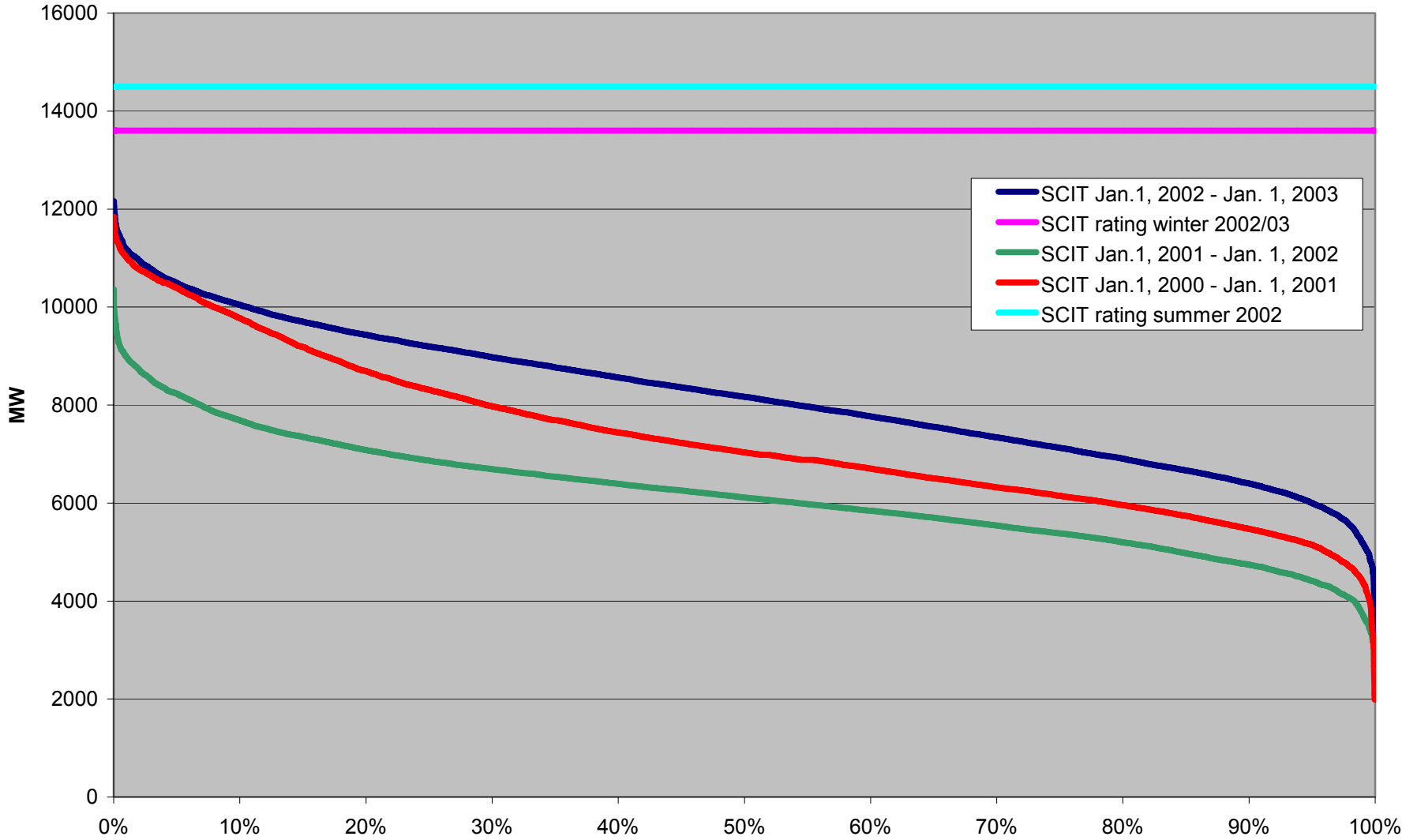
# Path 26



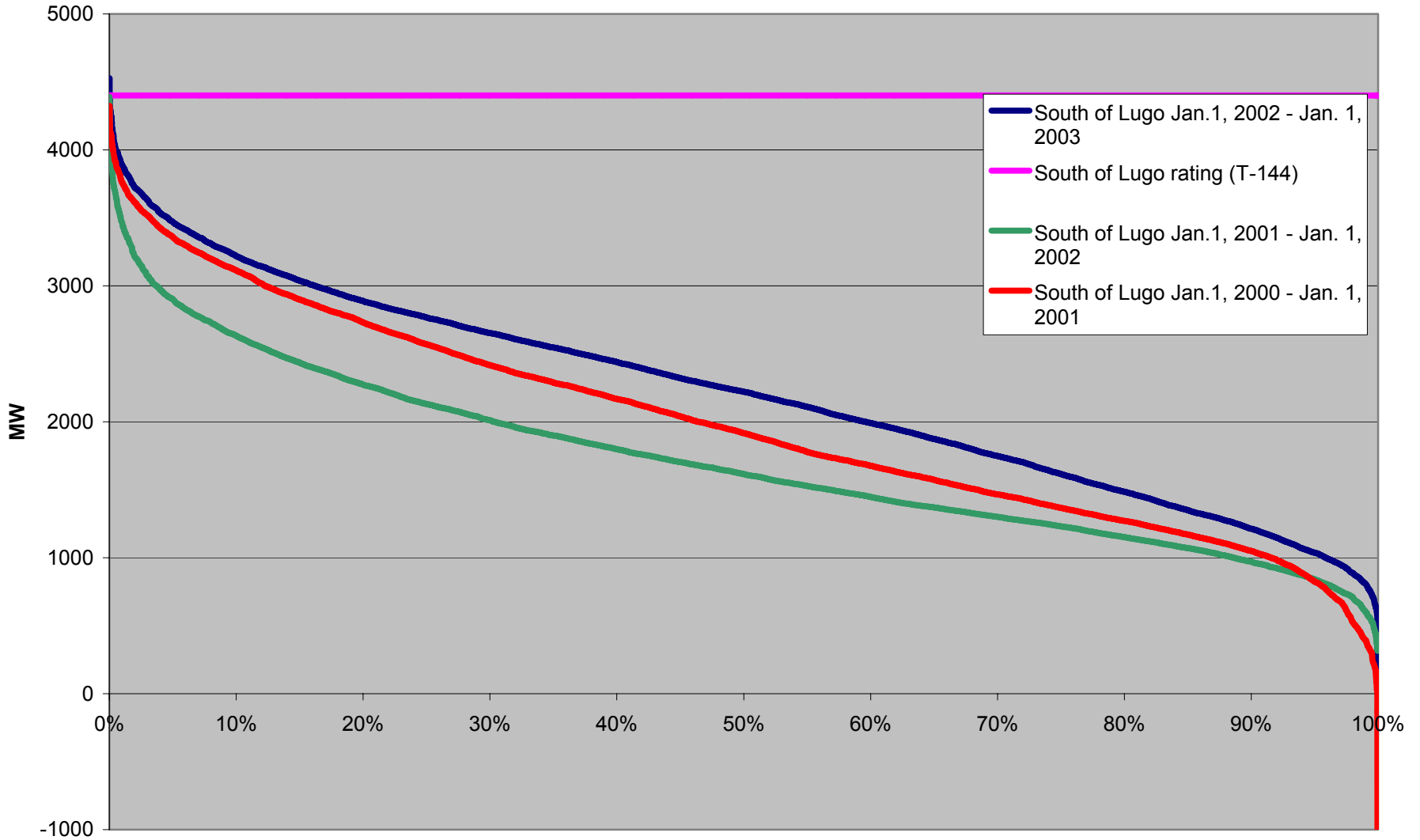
### PDCI (metered at Sylmar)



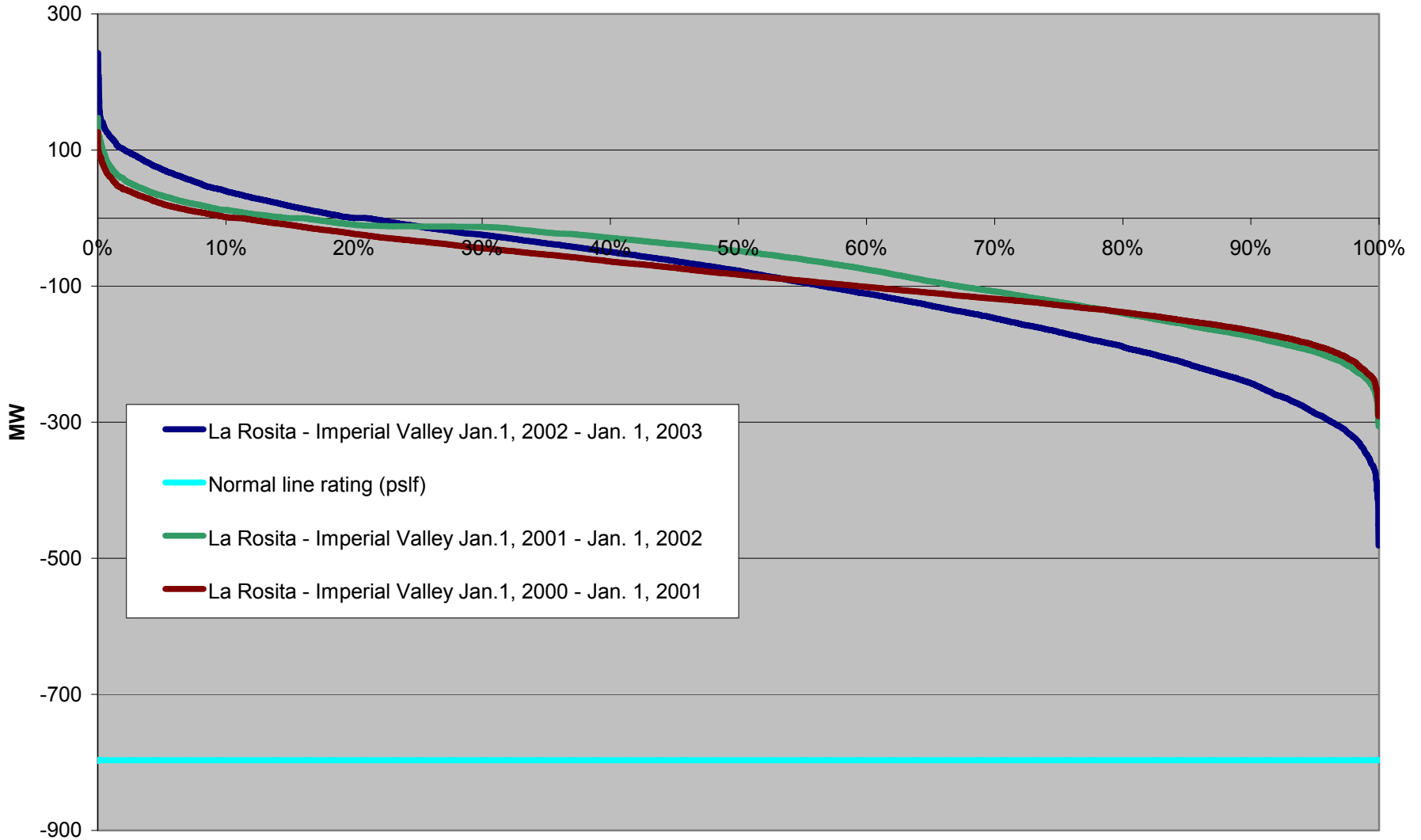
# SCIT



# South of Lugo



### La Rosita - Imperial Valley 230 kV line (metered at IV)



# West of River

