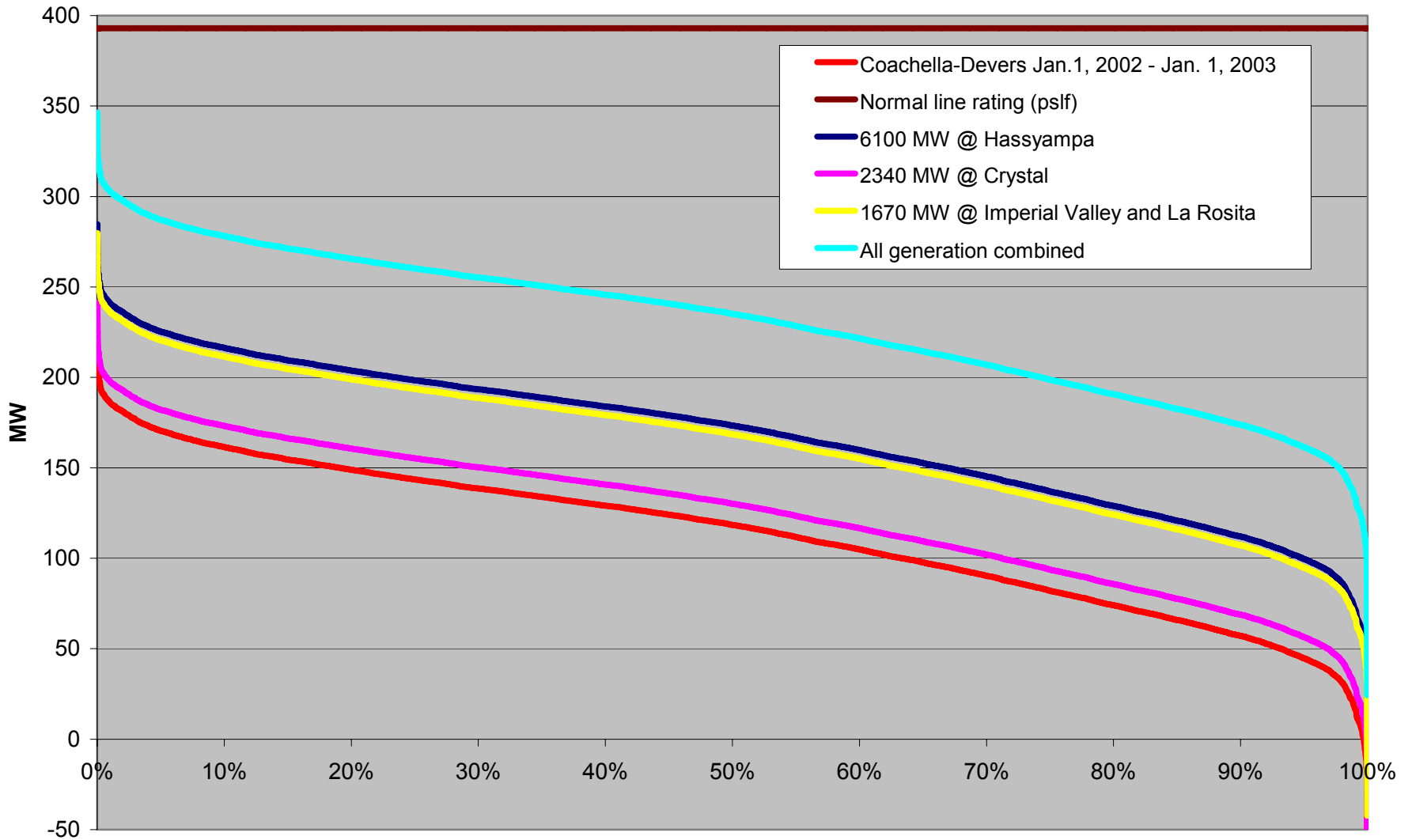
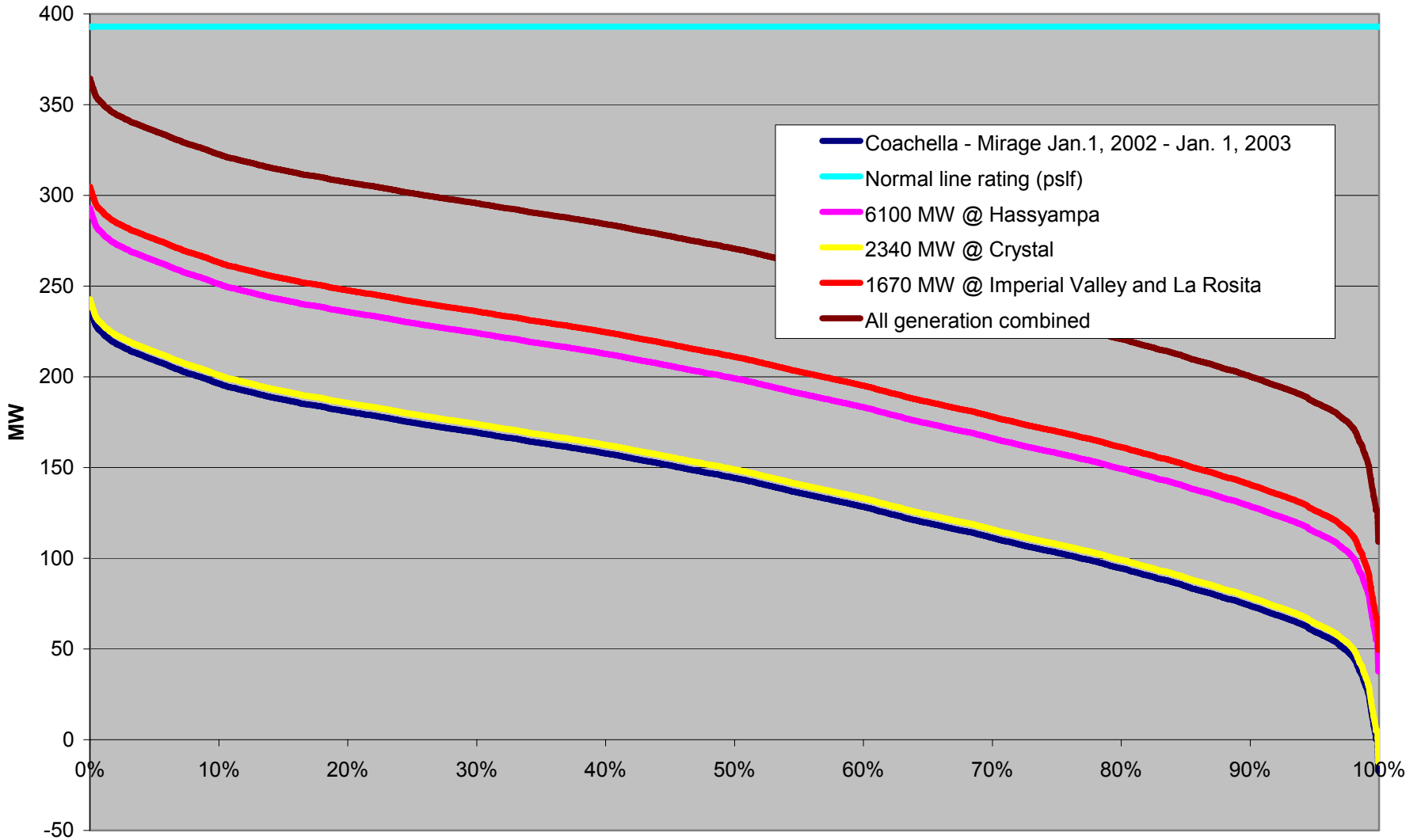


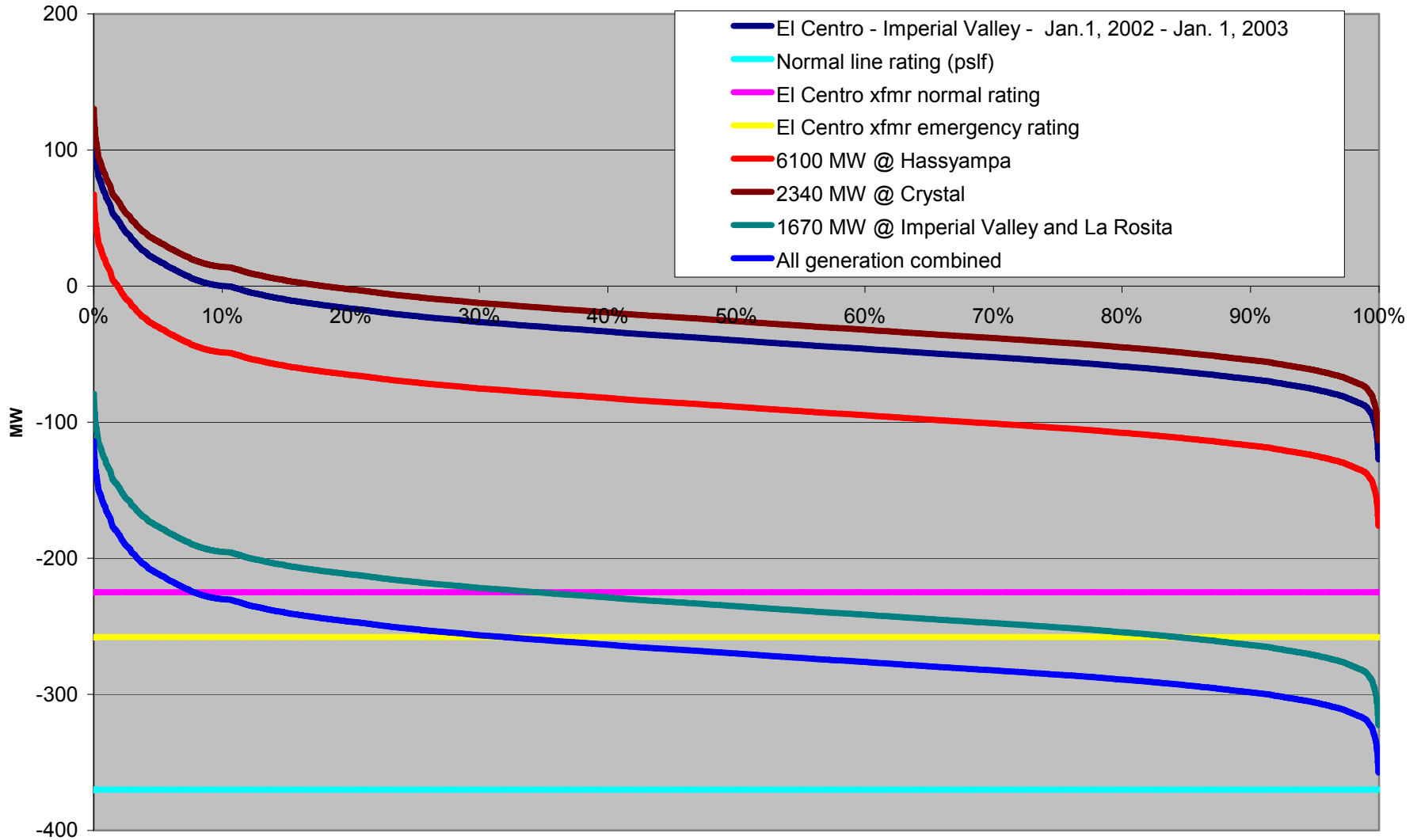
Projected Flow on Coachella - Devers 230 kV line (generation scheduled to SCE and SDG&E)



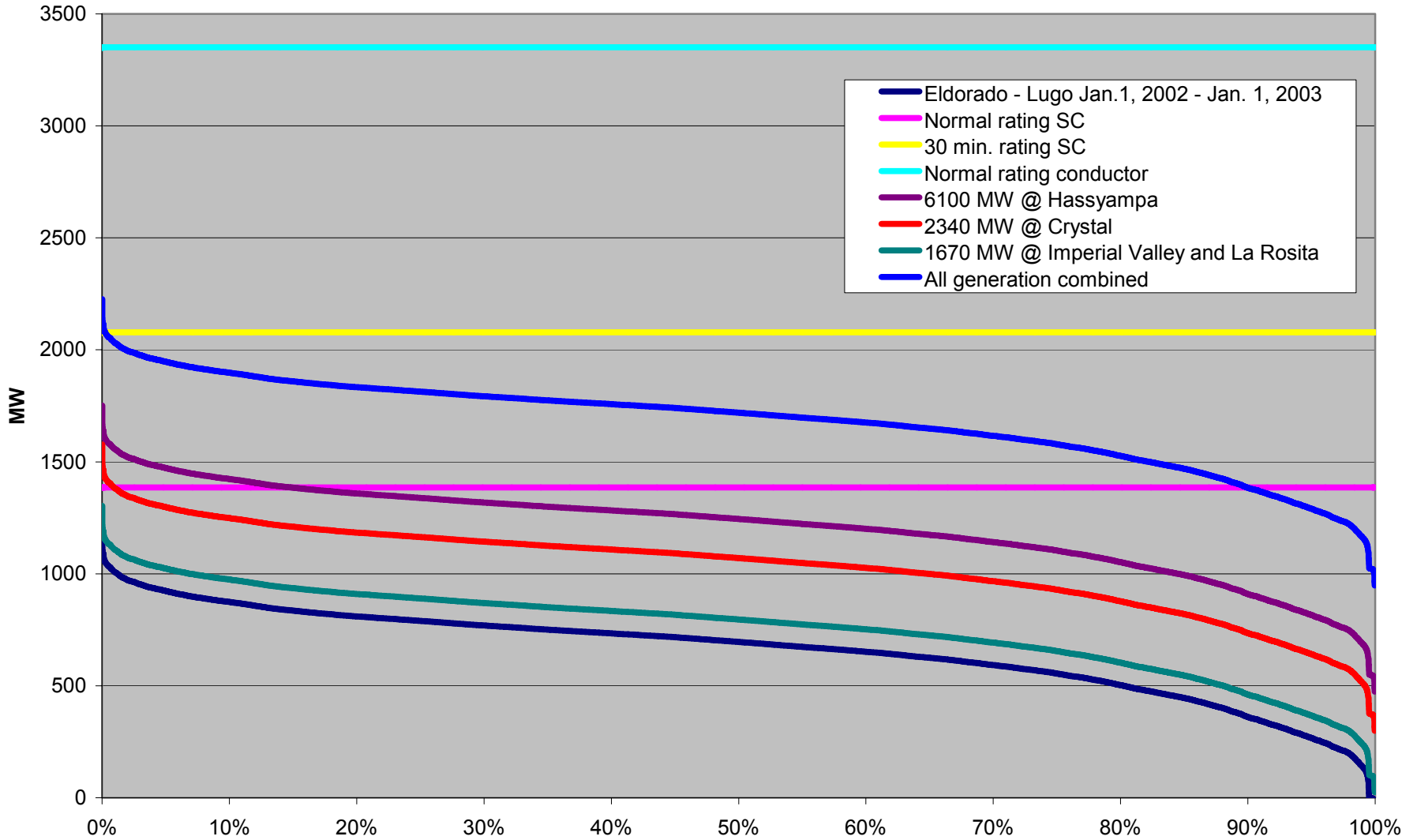
Projected Flow on Coachella - Mirage 230 kV line (generation scheduled to SCE and SDG&E)



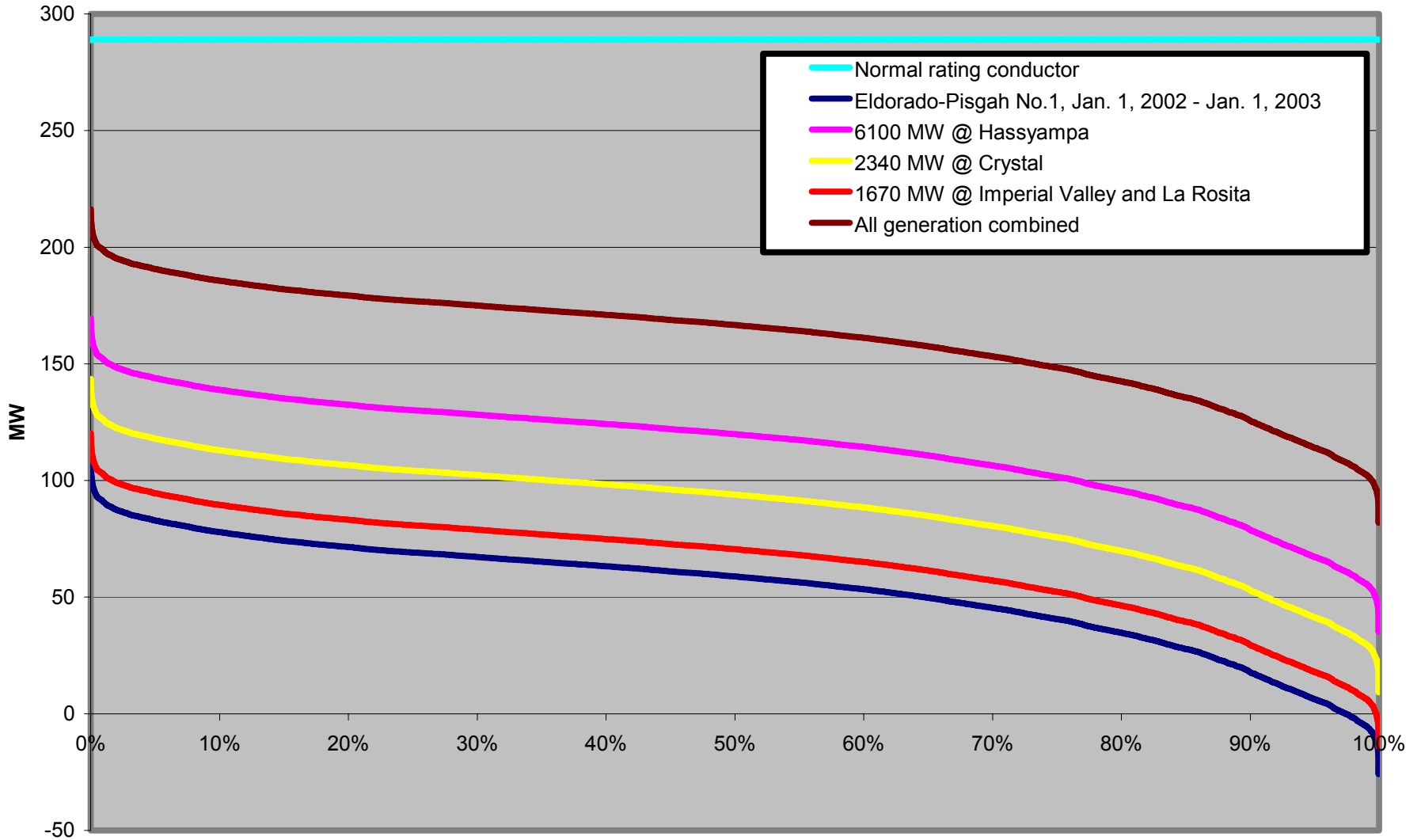
Projected Flow on EI Centro - Imperial Valley 230 kV line (generation scheduled to SCE and SDG&E)



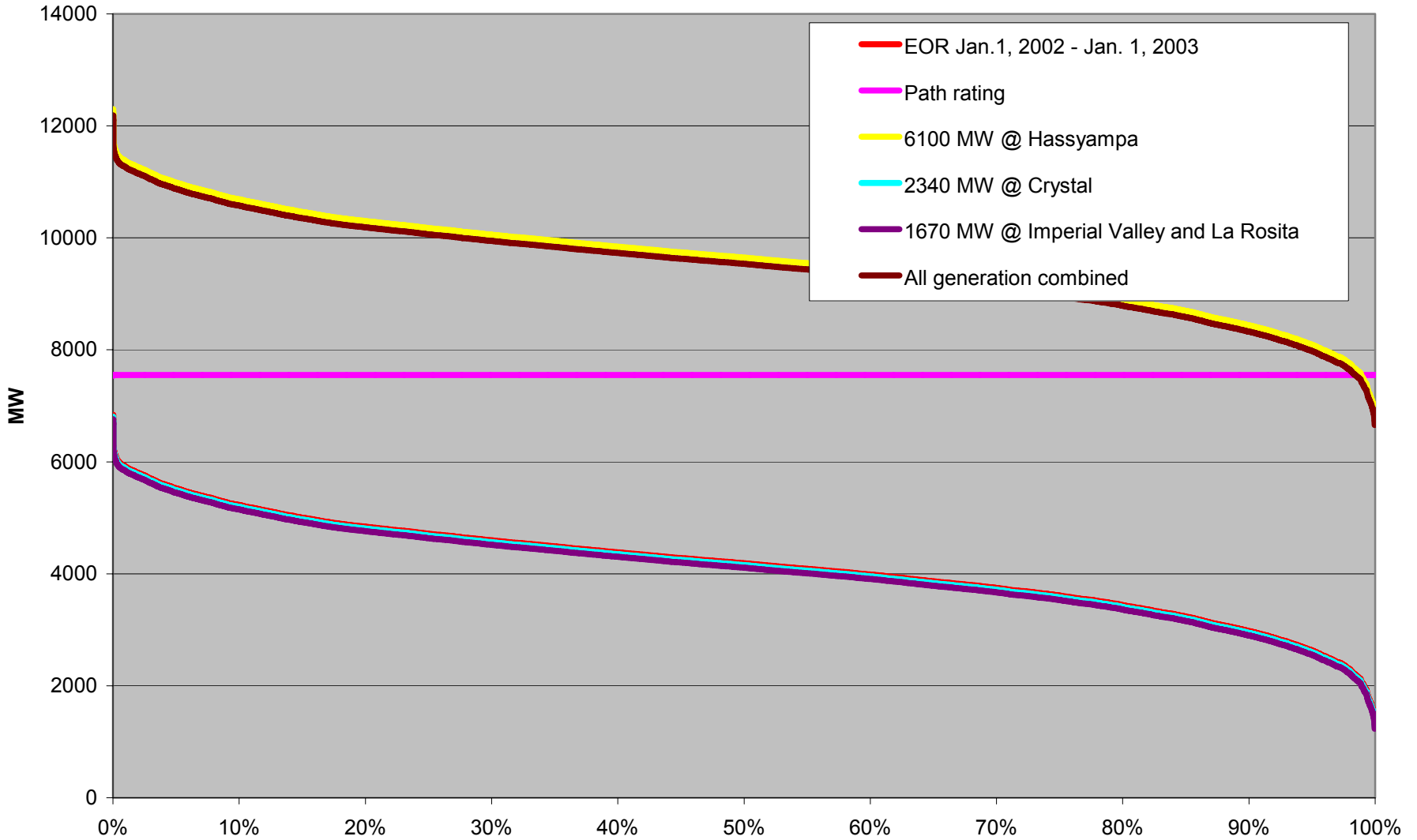
Projected Flow on Eldorado - Lugo 500 kV line (generation scheduled to SCE and SDG&E)



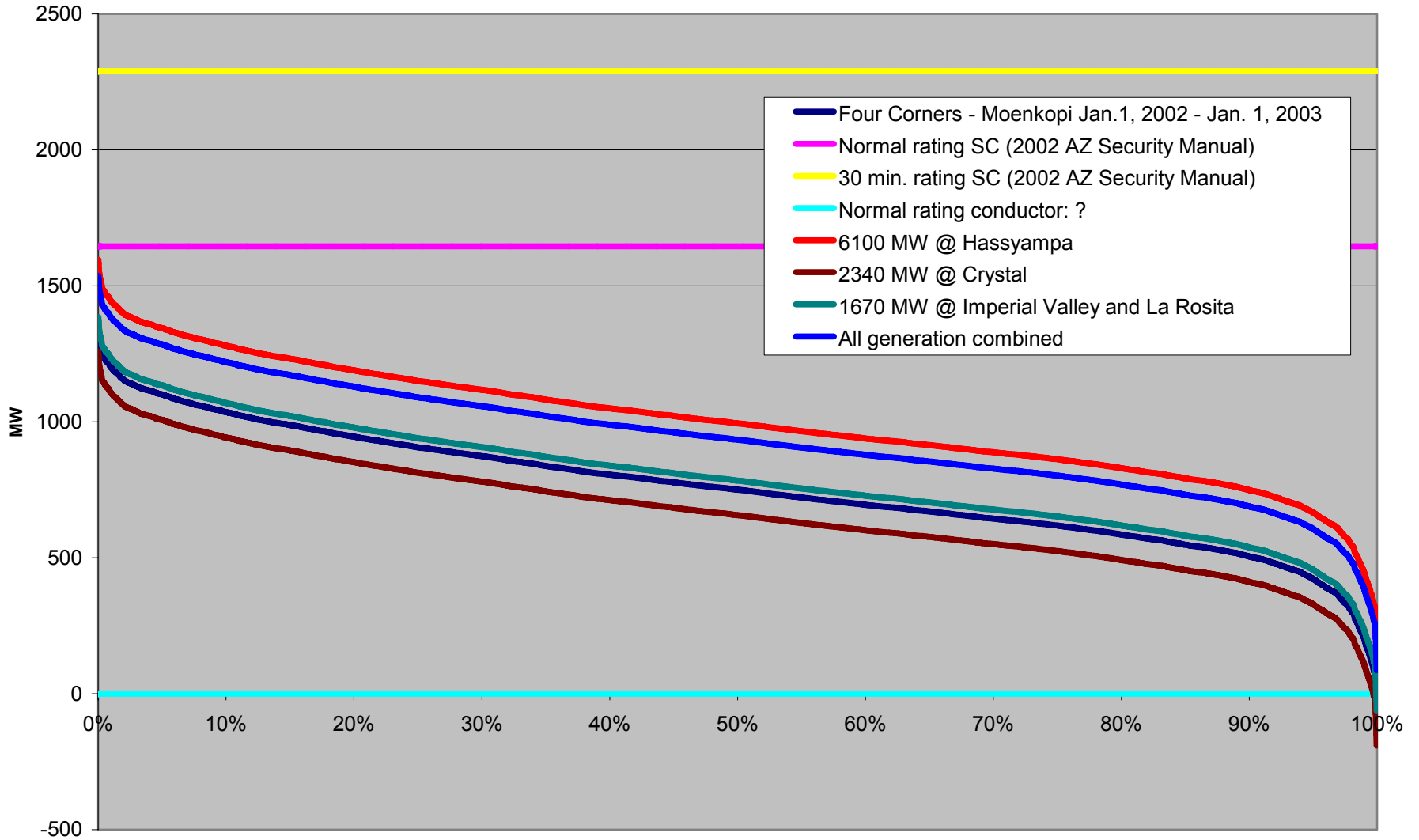
Projected Flow on Eldorado - Pisgah No. 1 (or No. 2) 230 kV line (generation scheduled to SCE and SDG&E)



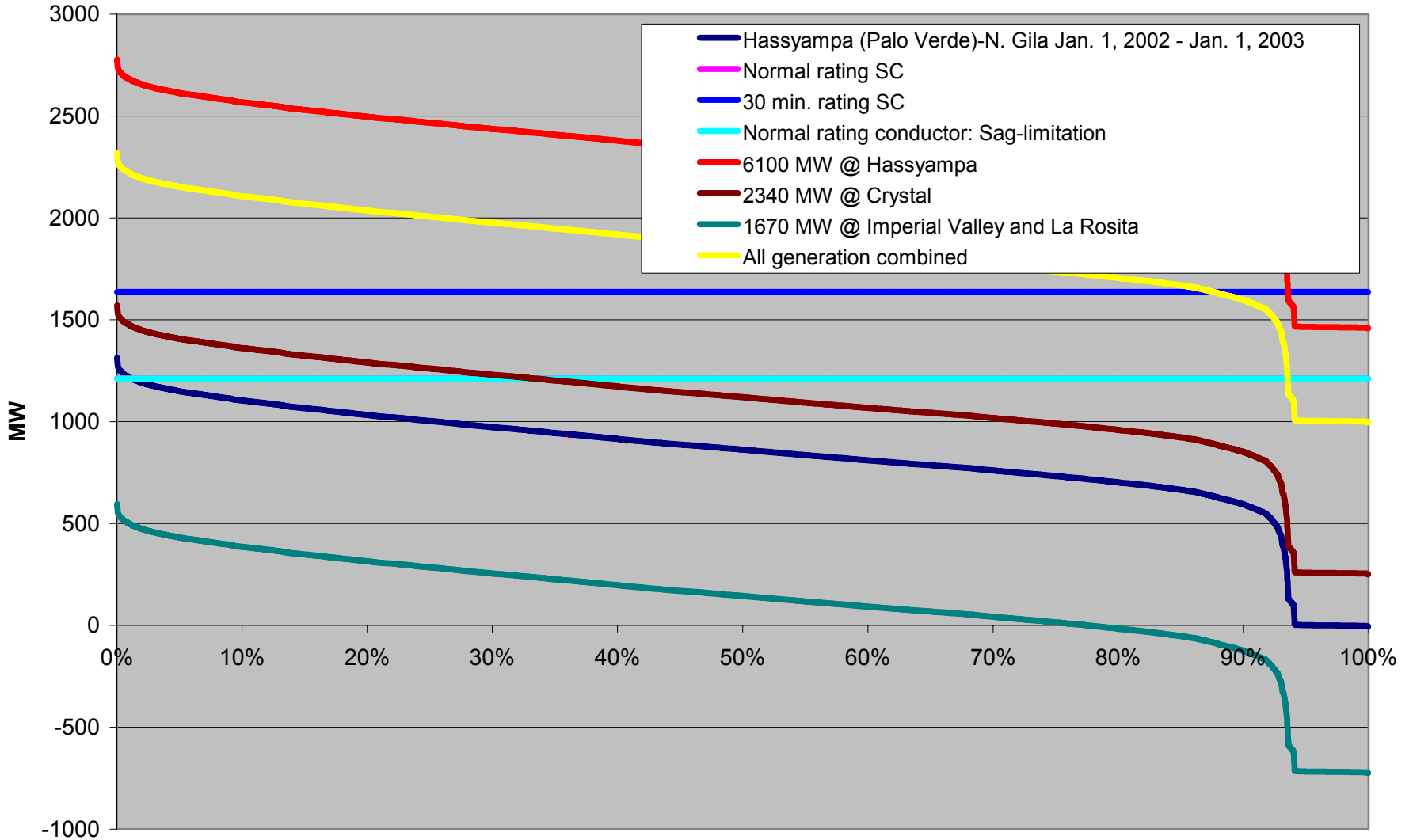
Projected Flow East of River (generation scheduled to SCE and SDG&E)



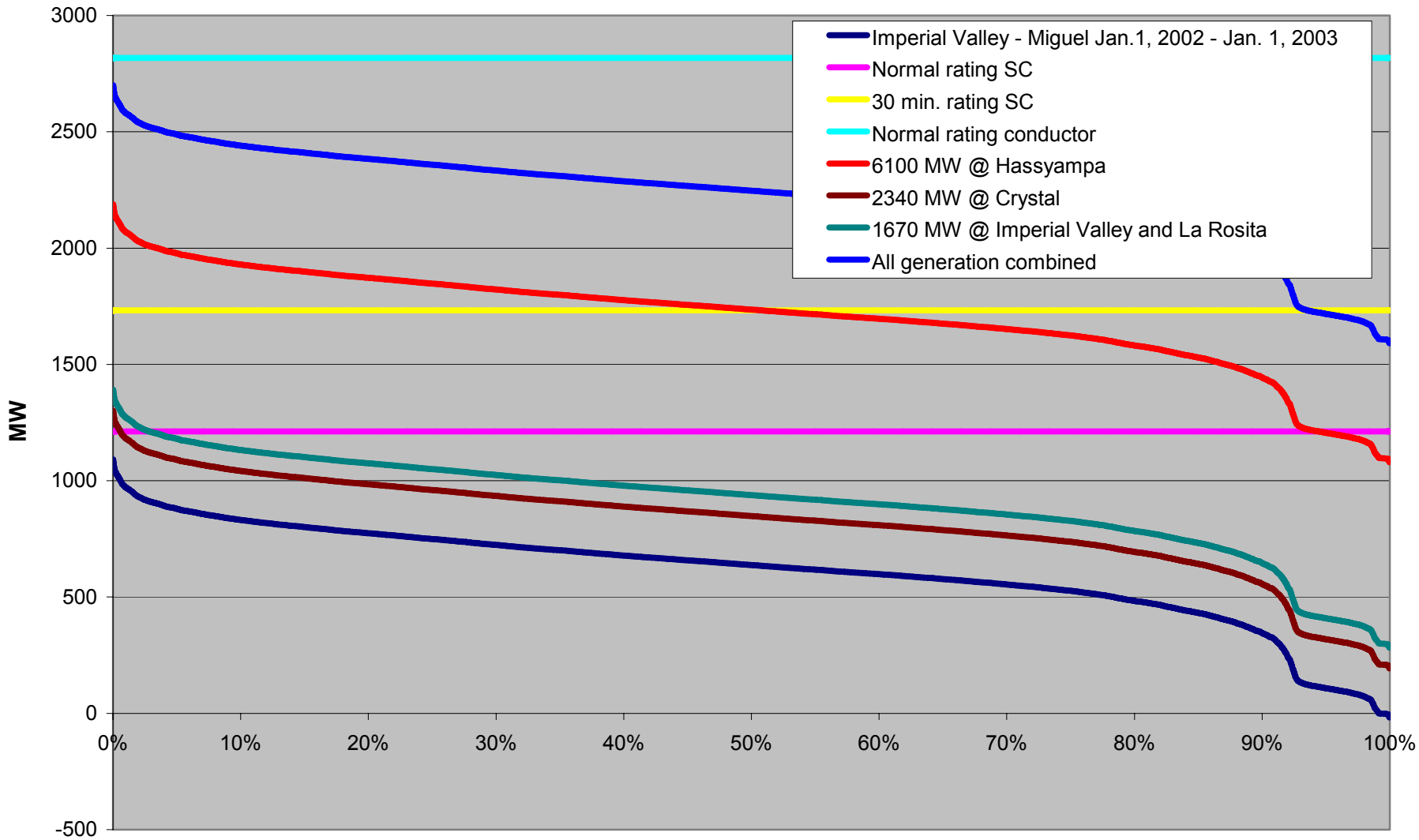
Projected Flow on Four Corners - Moenkopi 500 kV line (generation scheduled to SCE and SDG&E)



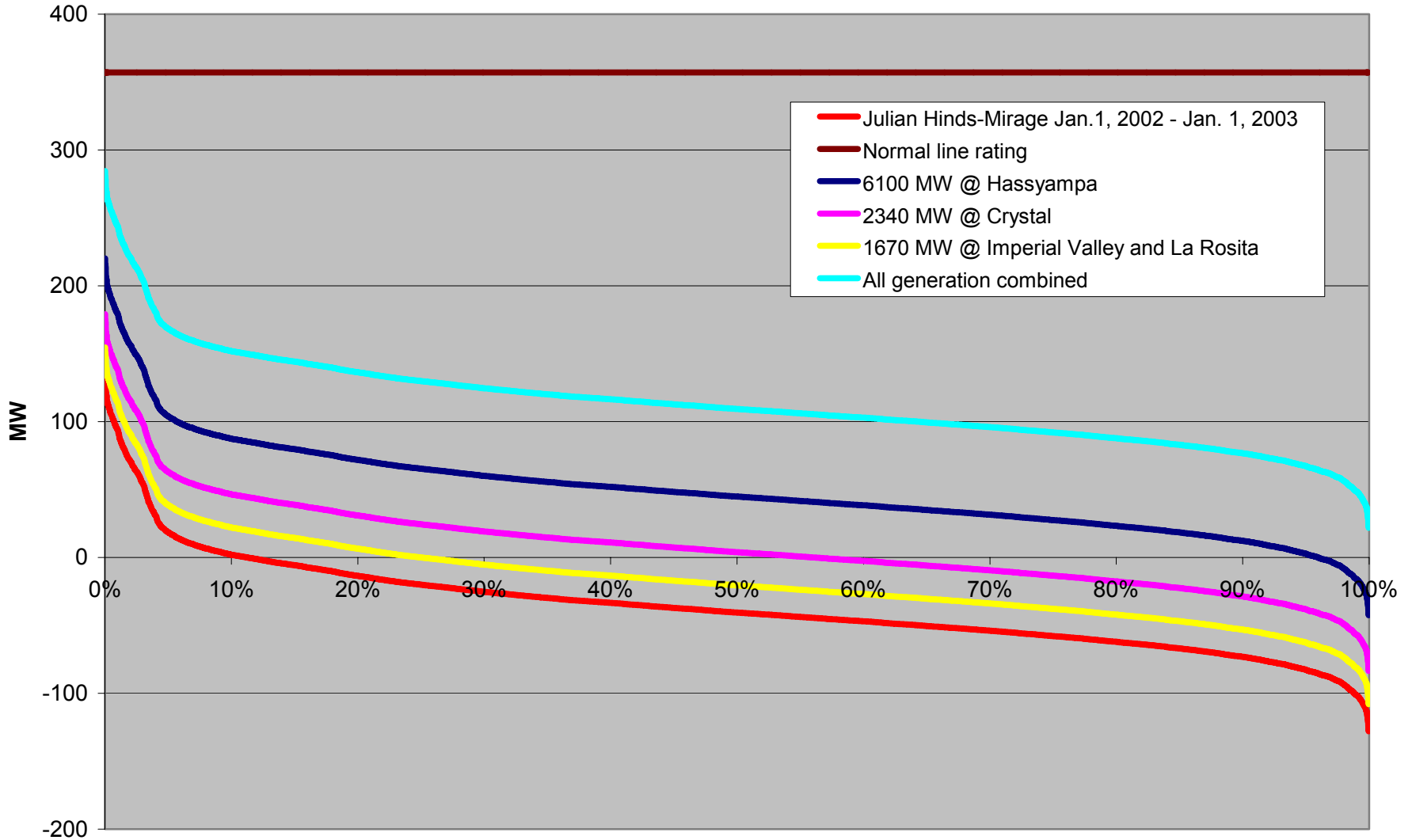
Projected Flow on Hassyampa - North Gila 500 kV line (generation scheduled to SCE and SDG&E)



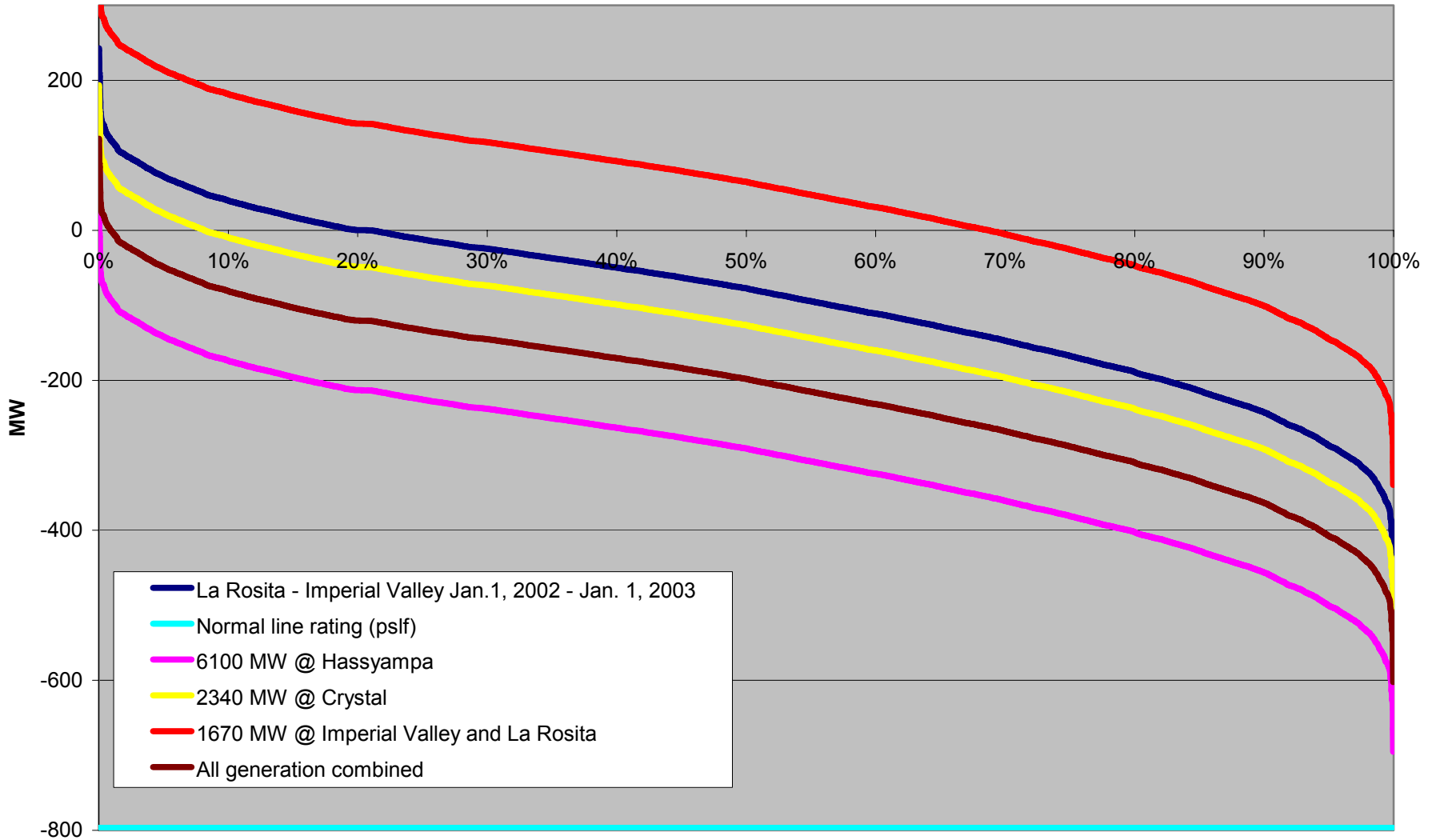
Projected Flow on Imperial Valley - Miguel 500 kV line (generation scheduled to SCE and SDG&E)



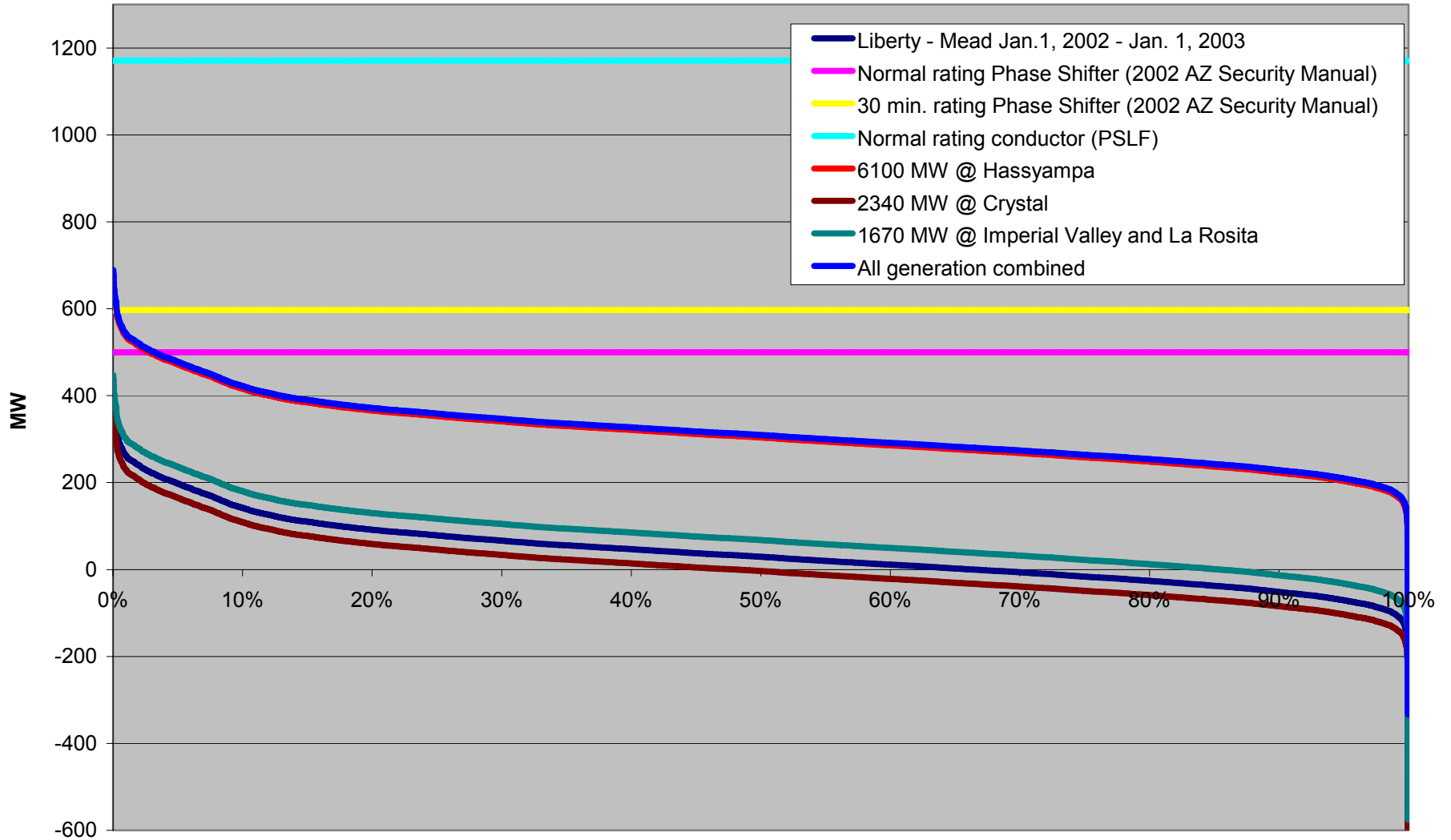
Projected Flow on Julian Hinds - Mirage 230 kV line (generation scheduled to SCE and SDG&E)



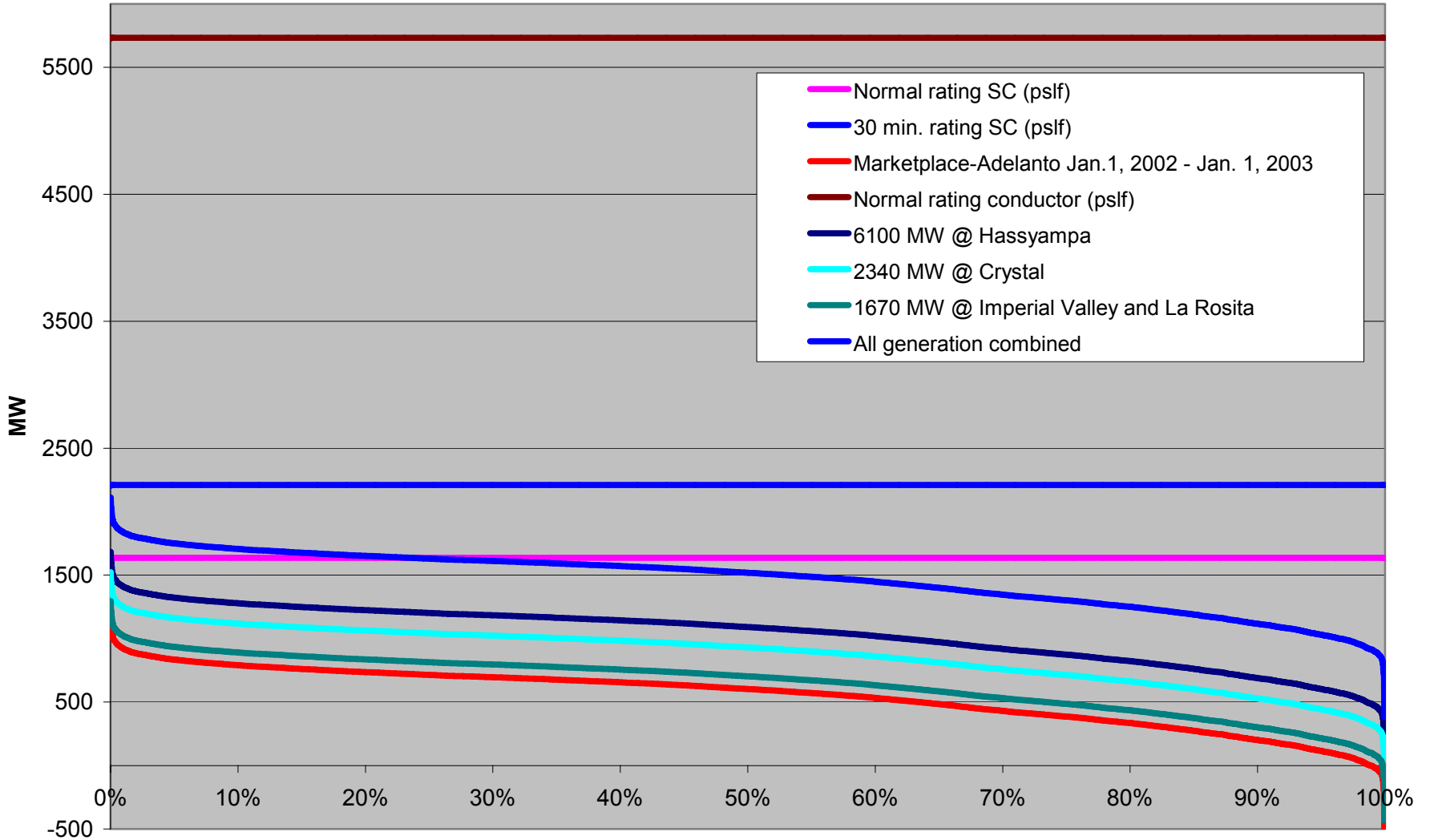
Projected Flow on La Rosita - Imperial Valley 230 kV line (generation scheduled to SCE and SDG&E)



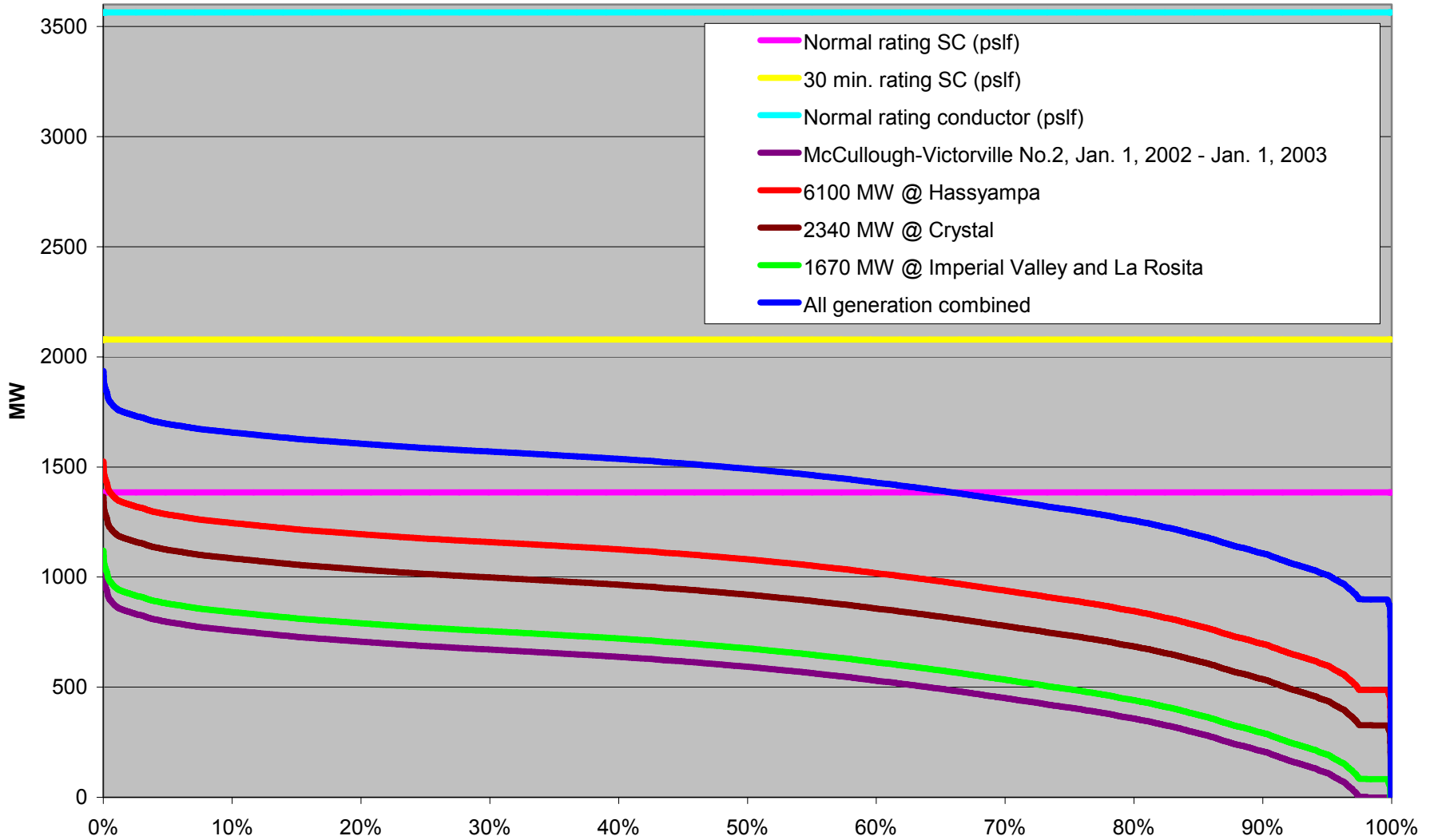
Projected Flow on Liberty - Mead 345 kV line (generation scheduled to SCE and SDG&E)



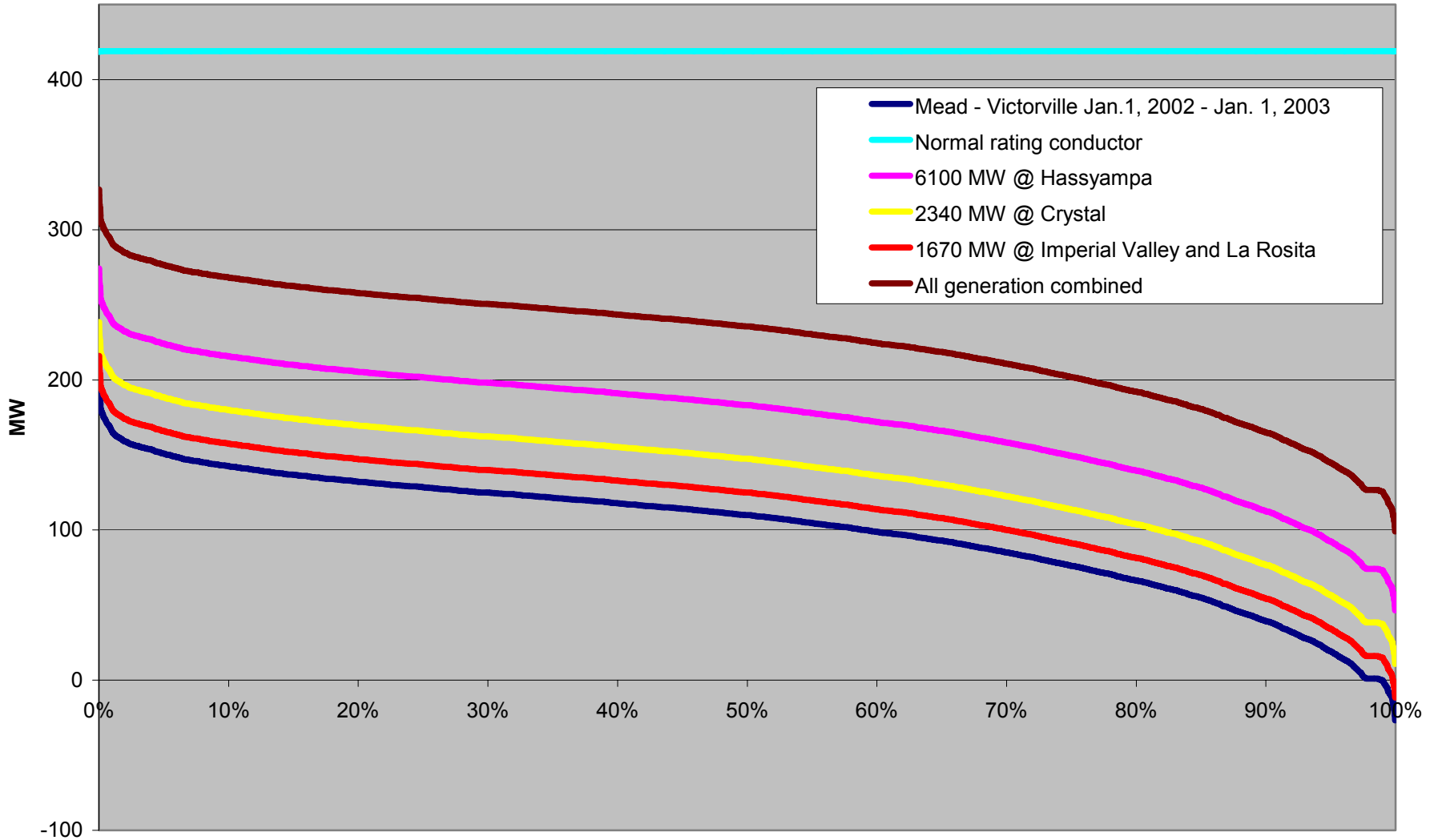
Projected Flow on Marketplace - Adelanto 500 kV line (generation scheduled to SCE and SDG&E)



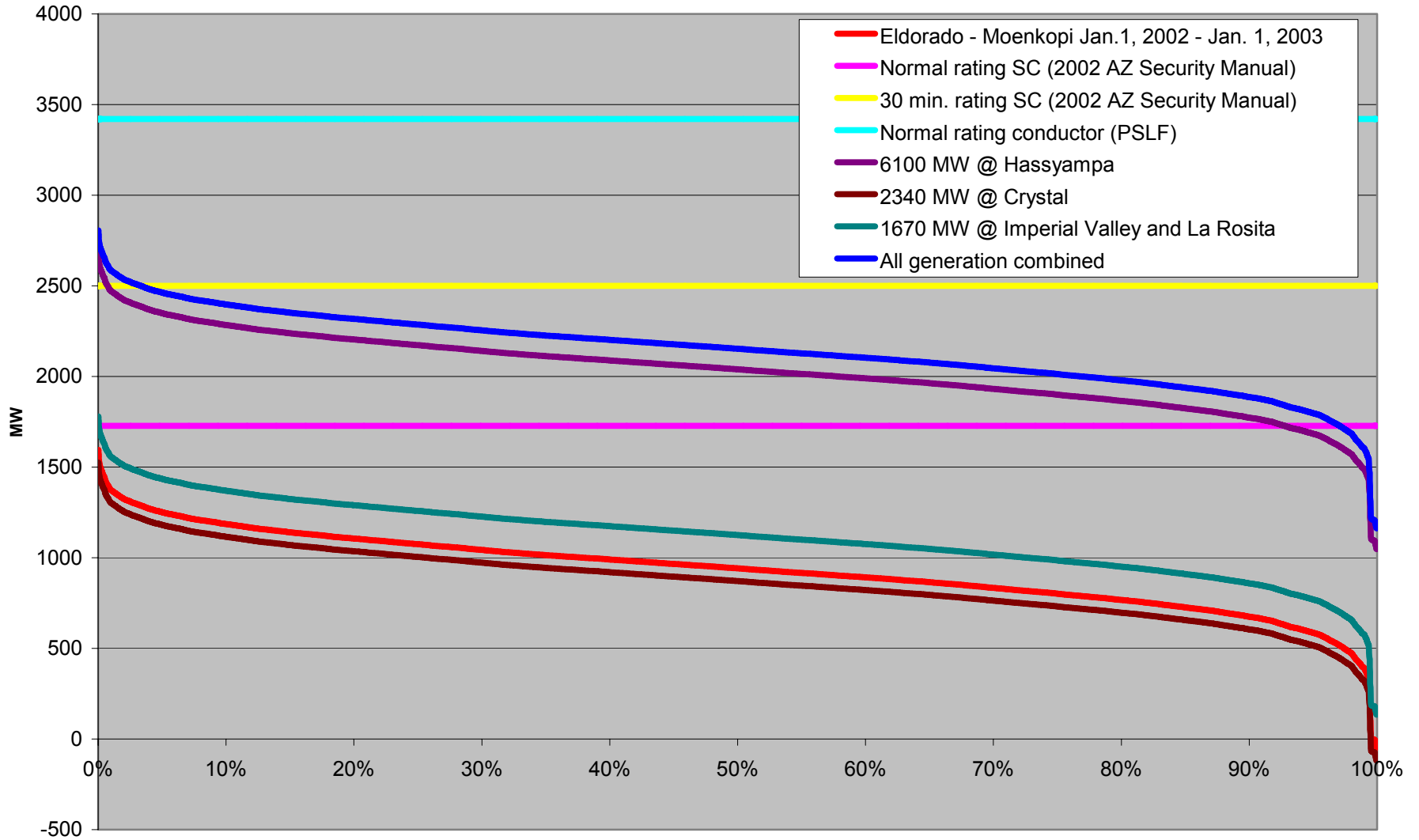
Projected Flow on McCullough - Victorville No. 2 (or No. 1) 500 kV line (generation scheduled to SCE and SDG&E)



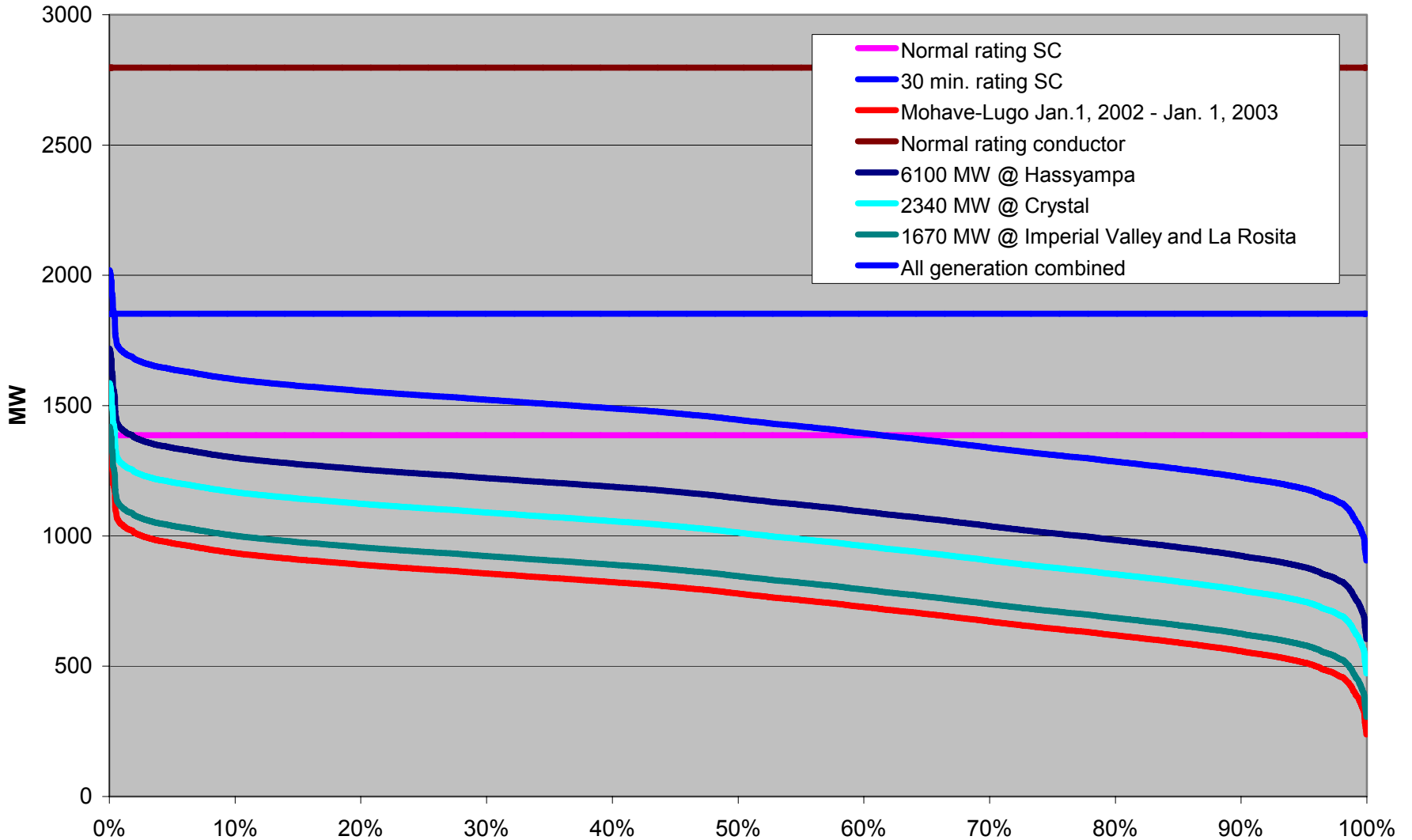
Projected Flow on Mead - Victorville 287 kV line (generation scheduled to SCE and SDG&E)



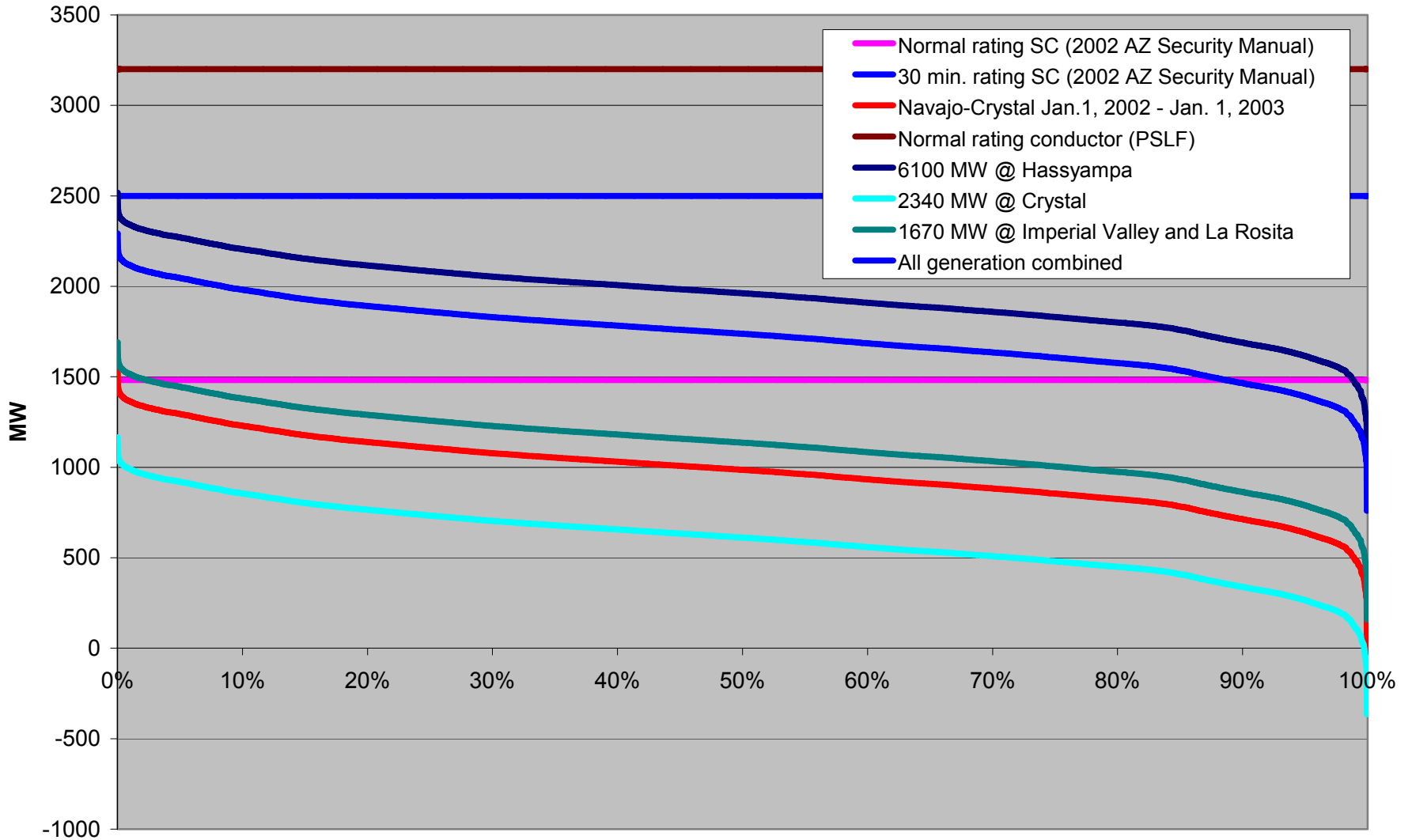
Projected flow on Eldorado - Moenkopi 500 kV line (generation scheduled to SCE and SDG&E)



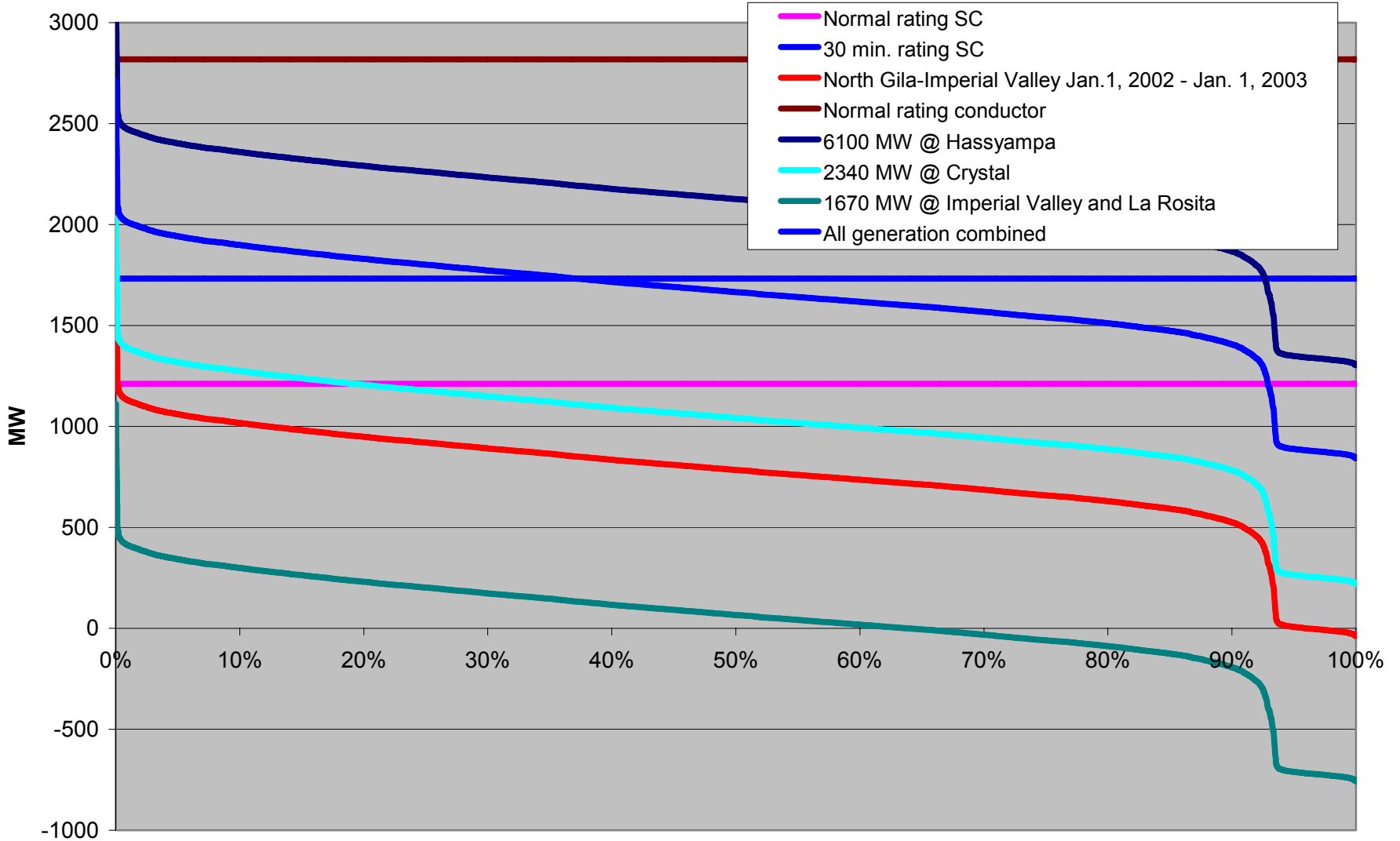
Projected Flow on Mohave - Lugo 500 kV line (generation scheduled to SCE and SDG&E)



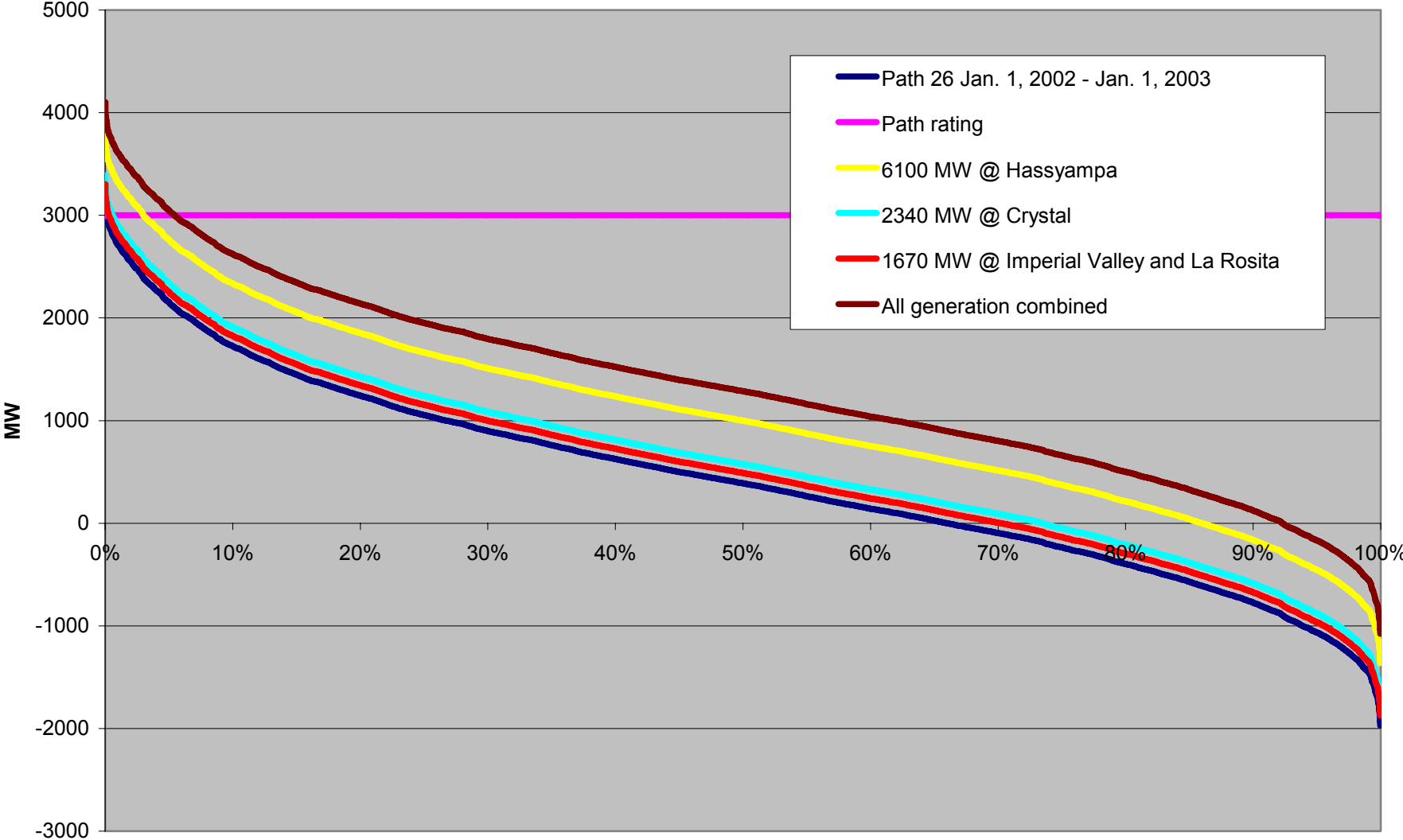
Projected flow on Navajo-Crystal 500 kV line (generation scheduled to SCE and SDG&E)



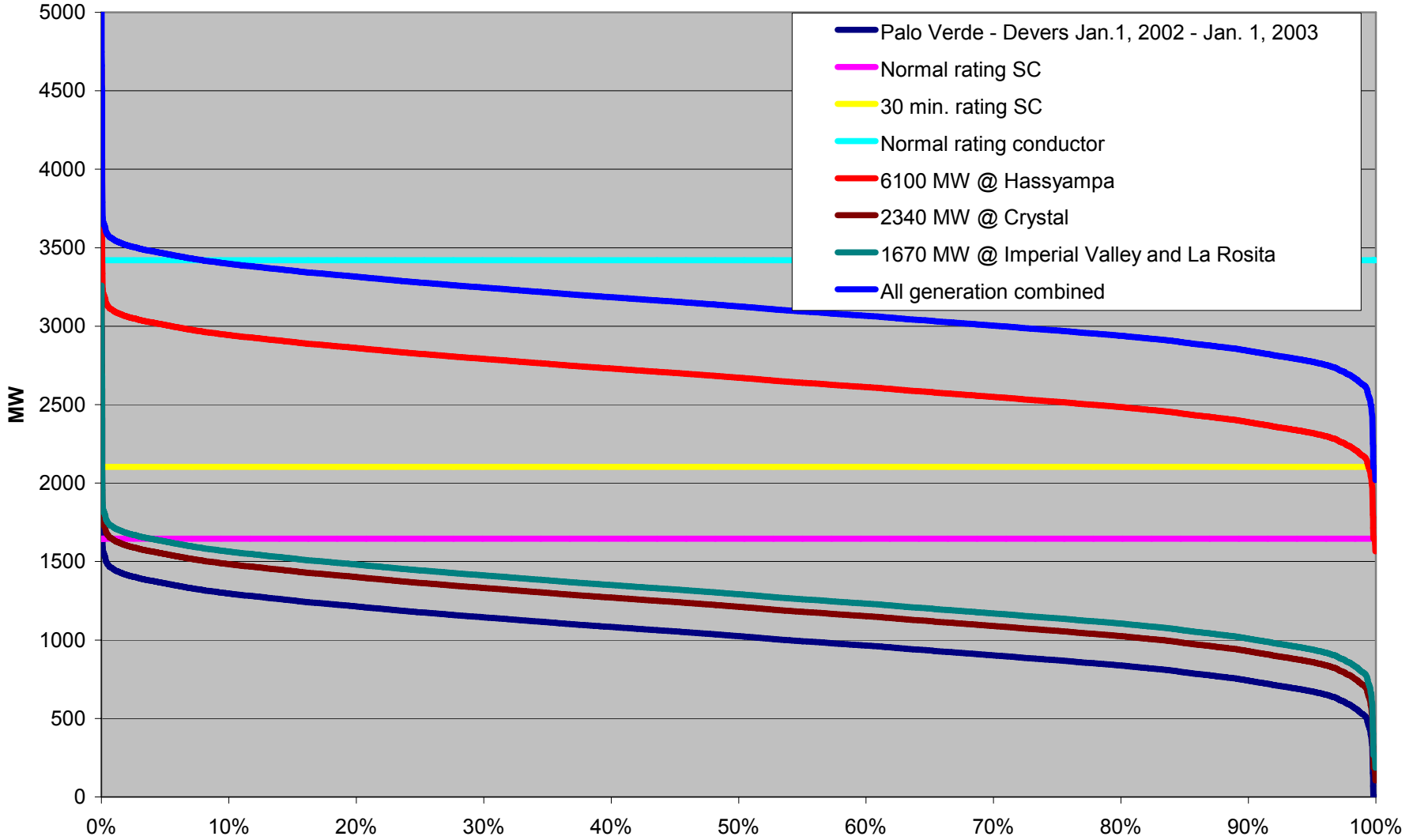
Projected Flow on North Gila-Imperial Valley 500 kV line (generation scheduled to SCE and SDG&E)



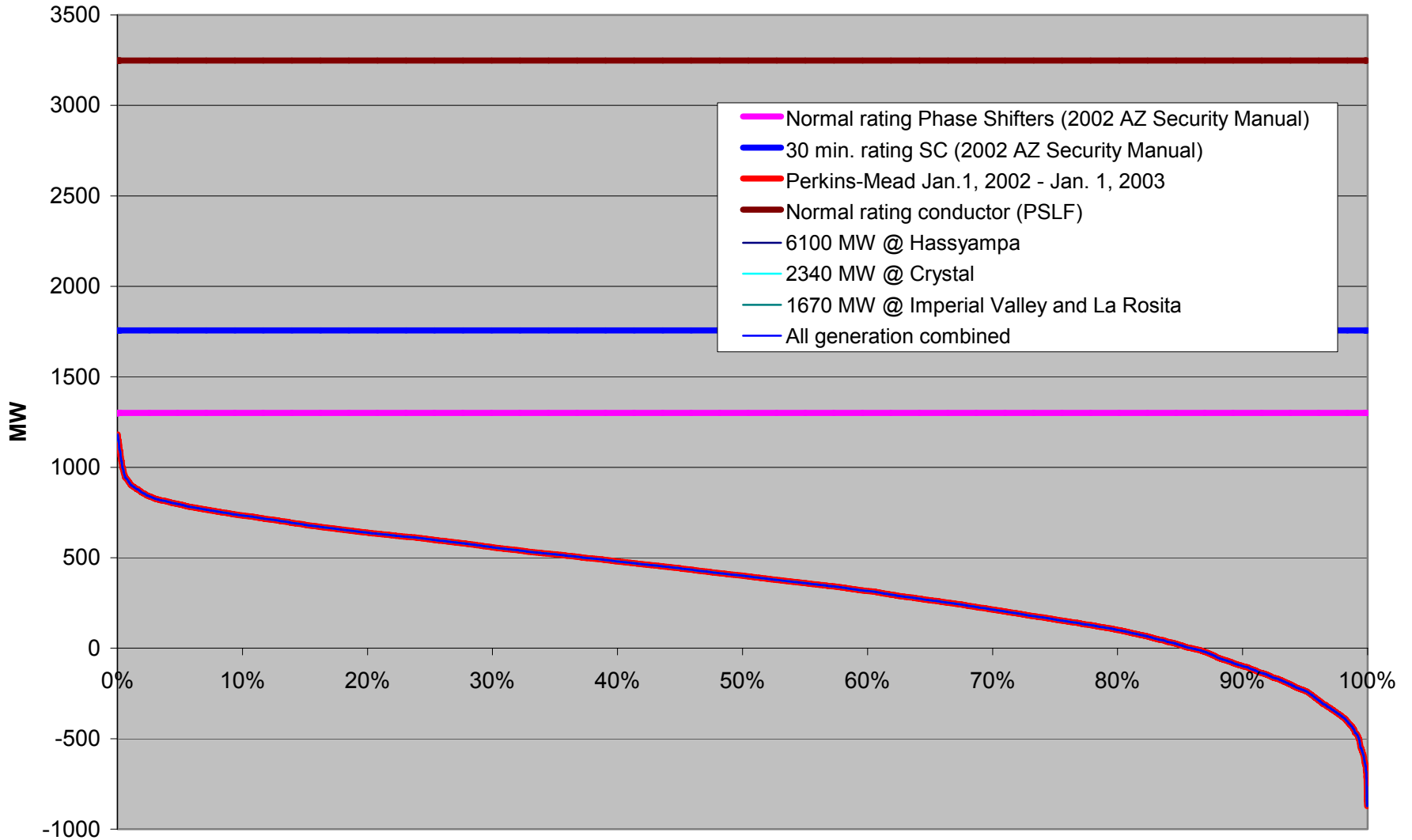
Projected Flow Path 26 (generation scheduled to SCE and SDG&E)



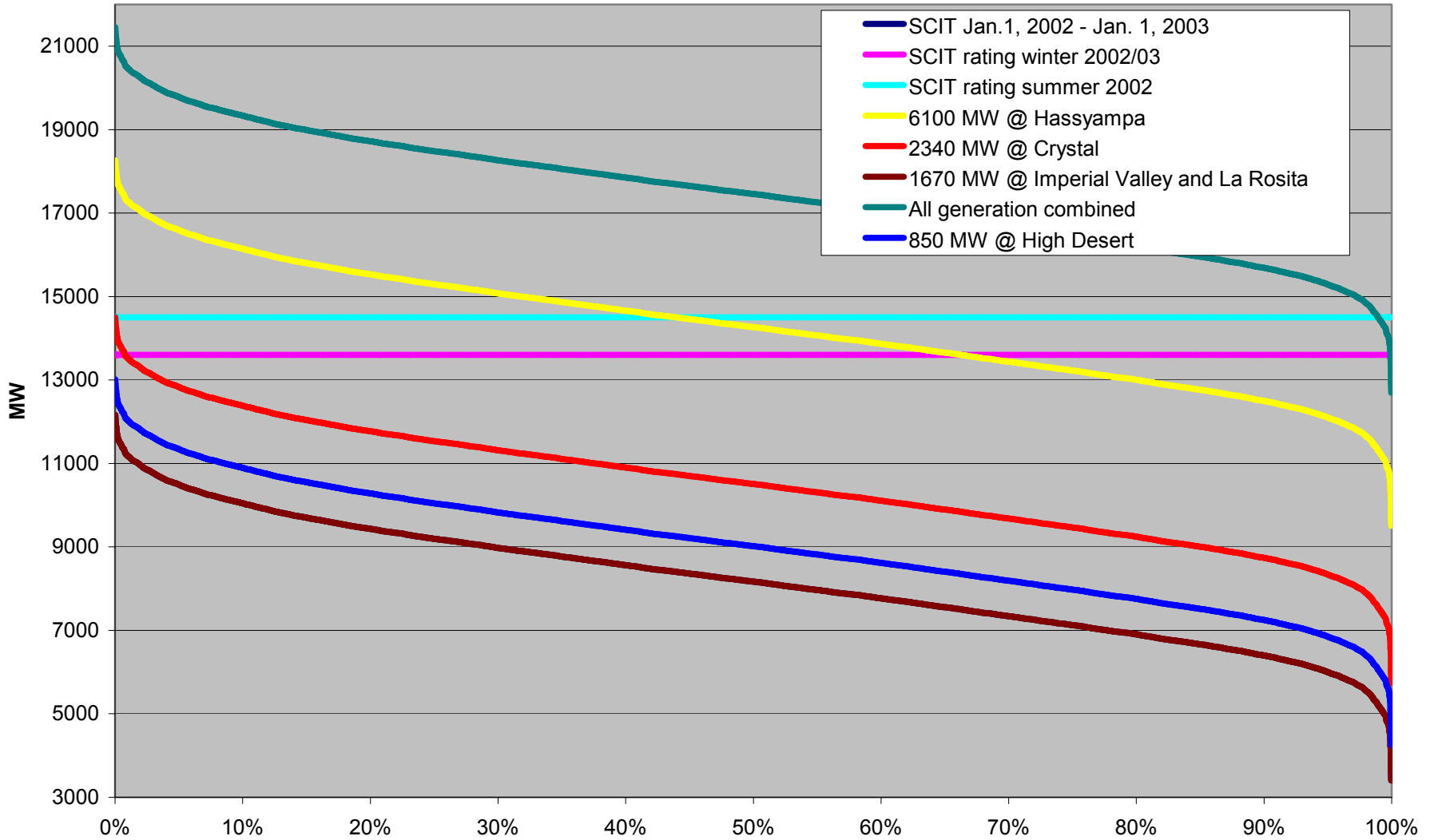
Projected Flow on Palo Verde - Devers 500 kV line (generation scheduled to SCE and SDG&E)



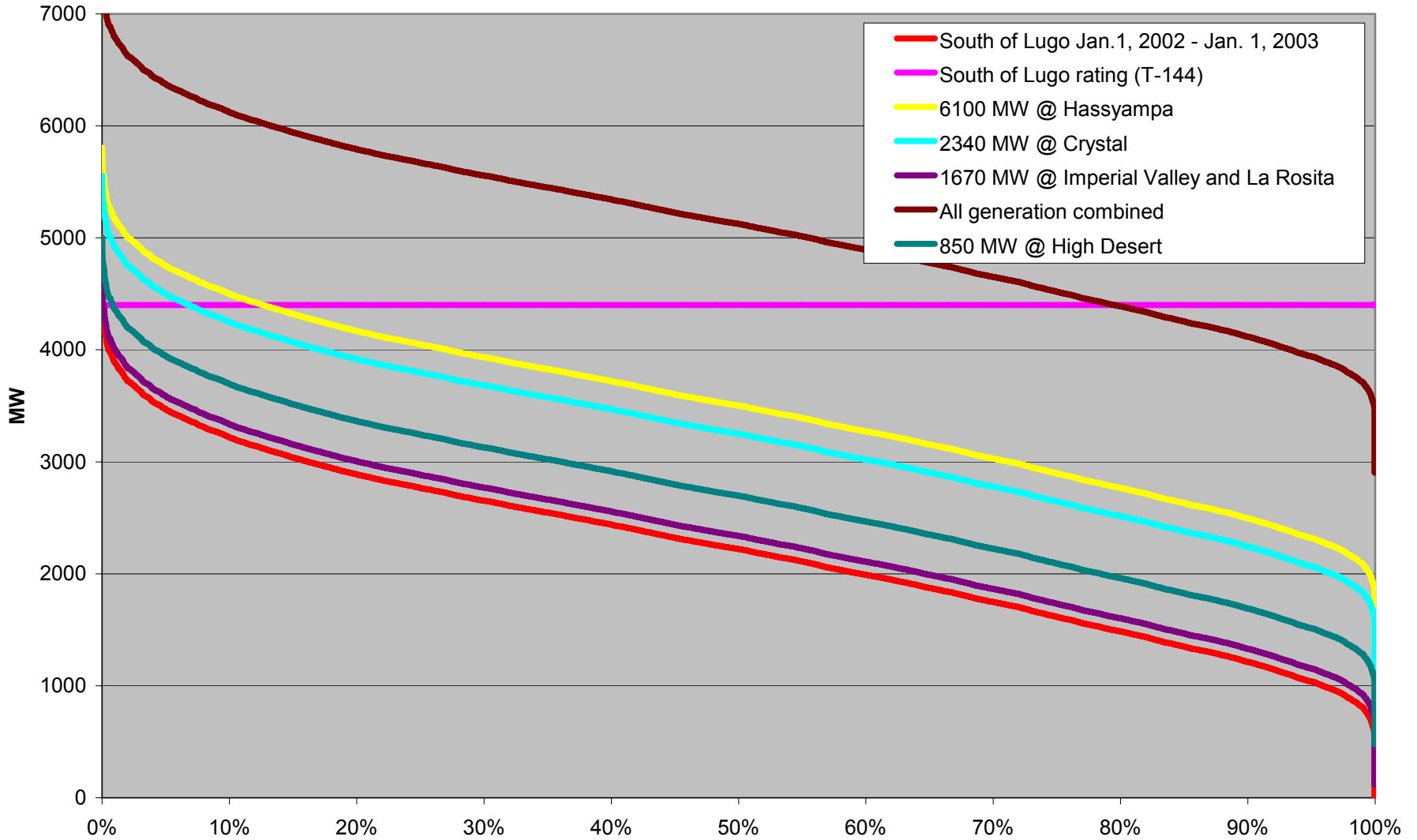
Projected Flow on Perkins-Mead 500 kV line (generation scheduled to SCE and SDG&E)



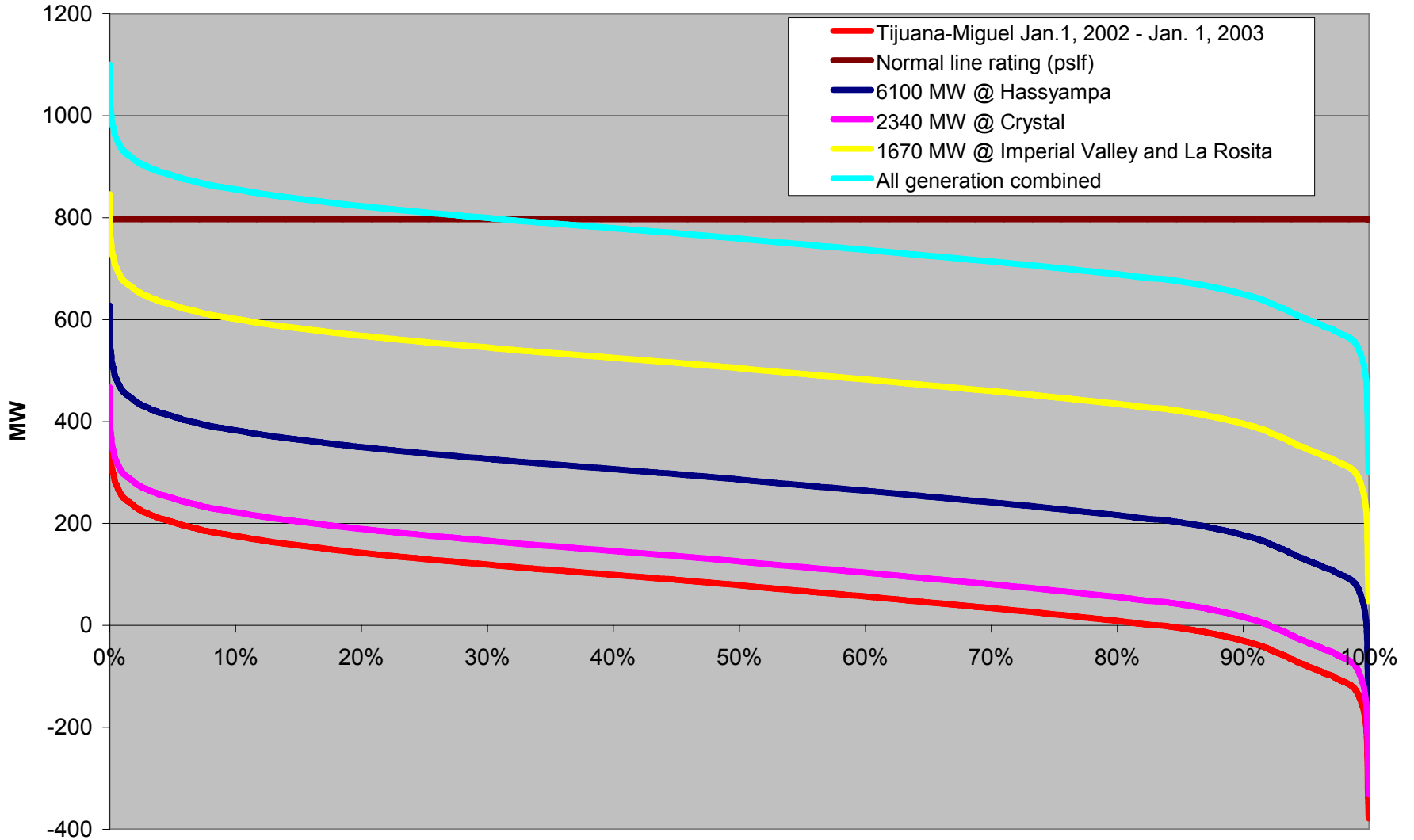
Projected Flow SCIT (generation scheduled to SCE and SDG&E)



Projected Flow South of Lugo (generation scheduled to SCE and SDG&E)



Projected Flow on Tijuana - Miguel 230 kV line (generation scheduled to SCE and SDG&E)



Projected Flow West of River (generation scheduled to SCE and SDG&E)

