

# Imperial Valley San Diego Expansion Plan (ISEP) Study

SDG&E

Jack Bainbridge

October 2, 2003



A  Sempra Energy utility™



# Feasibility Study

- Potential Project Drivers
  - Reliability
  - Congestion Mitigation
- The issues being looked at are the routing feasibility, electrical performance, and economic impacts
- Environmental Planning Group (EPG)

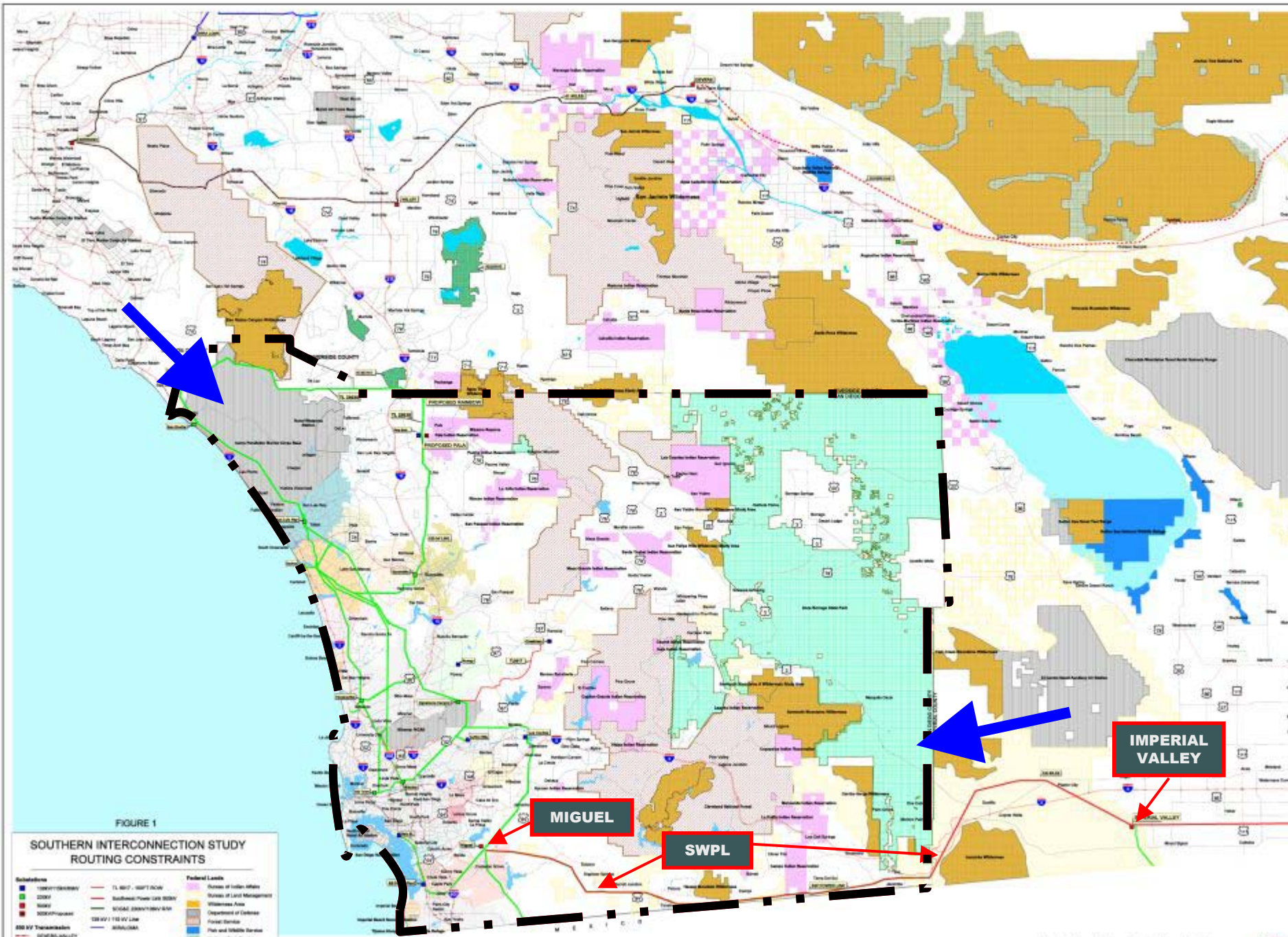
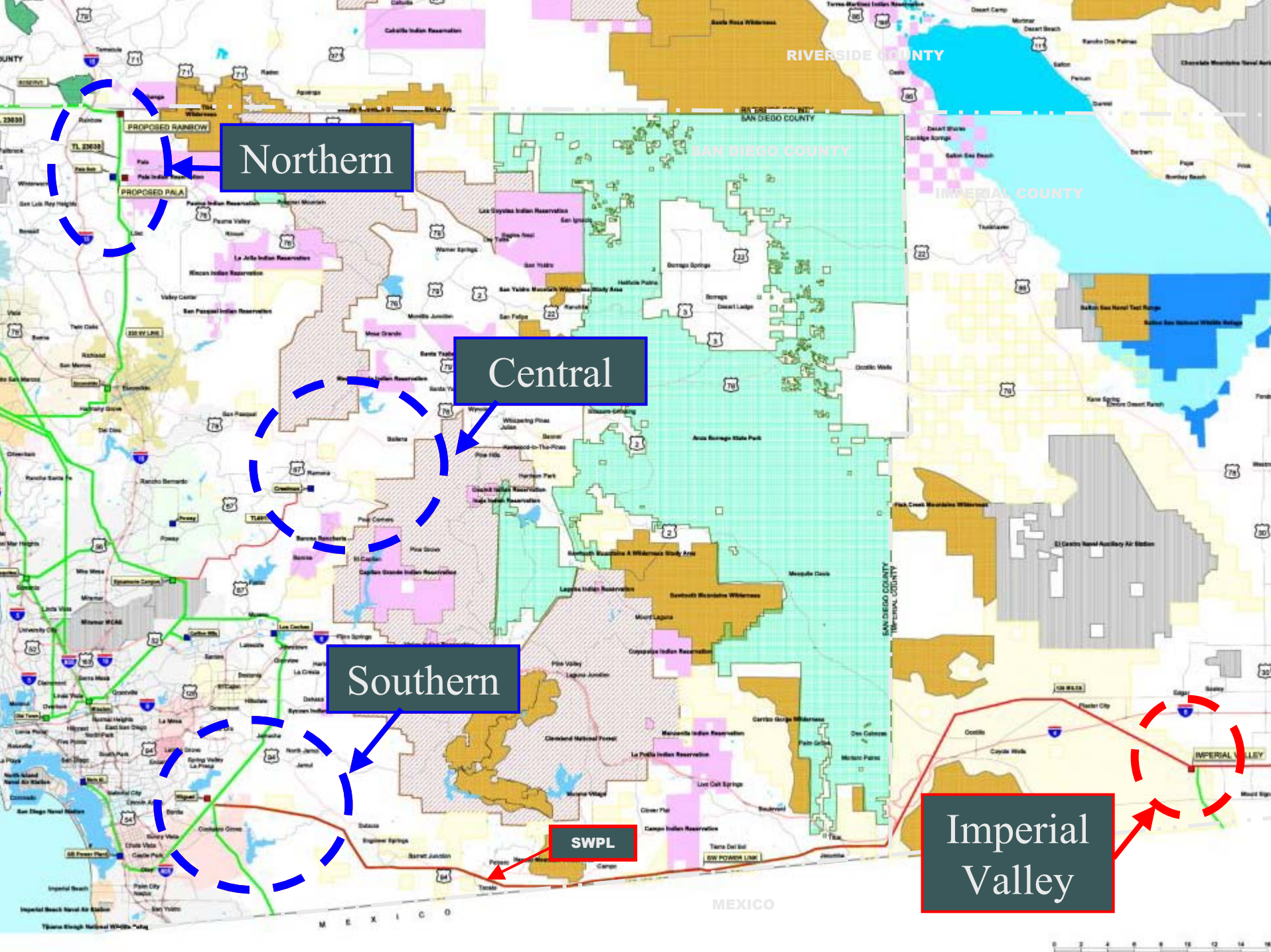


FIGURE 1

**SOUTHERN INTERCONNECTION STUDY  
ROUTING CONSTRAINTS**

Color	Line Style	Federal Lands
Blue	TL 8007 - 5007 ACW	Source of Indian Affairs
Green	Baseline Power Line 8000	Source of Land Management
Red	SG&E 2500/1500/500	Wilderness Area
Black	SG&E 110/10/10	Department of Defense
Yellow	SG&E 110/10/10	Forest Service
Light Blue	SG&E 110/10/10	Wild and Scenic River
Light Green	SG&E 110/10/10	Wildlife Service
Light Yellow	SG&E 110/10/10	State Lands



Northern

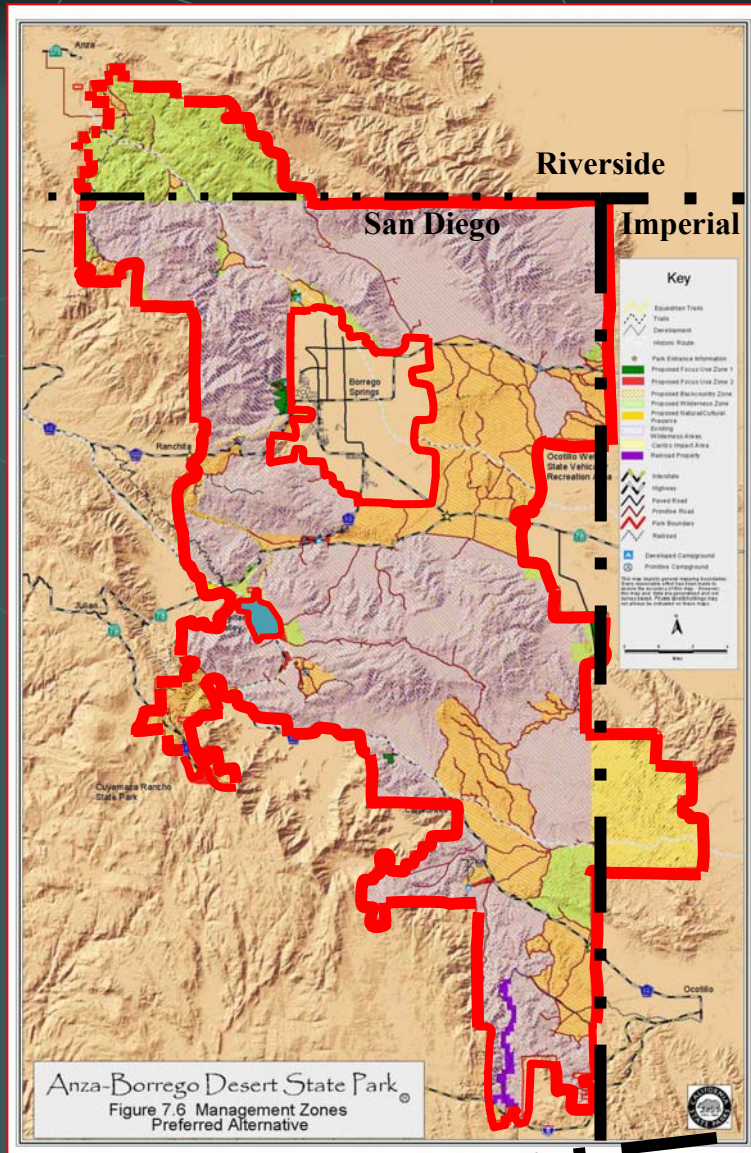
Central

Southern

SWPL

Imperial Valley

# Anza Borrego Desert State Park General Plan – In Progress



▪ The draft General Plan is available at [www.parks.ca.gov](http://www.parks.ca.gov) (Click on Planning/General Plans/General Plans in Progress/Anza-Borrego Desert State Park).

• Public Comment period ended March 3, 2003.

• Submit comments to Environmental Coordinator Southern Service Center (619)220-5300

• Public hearing planned for November 21 before the California State Park and Recreation Commission – Public Comments solicited at hearing.

Mexico