



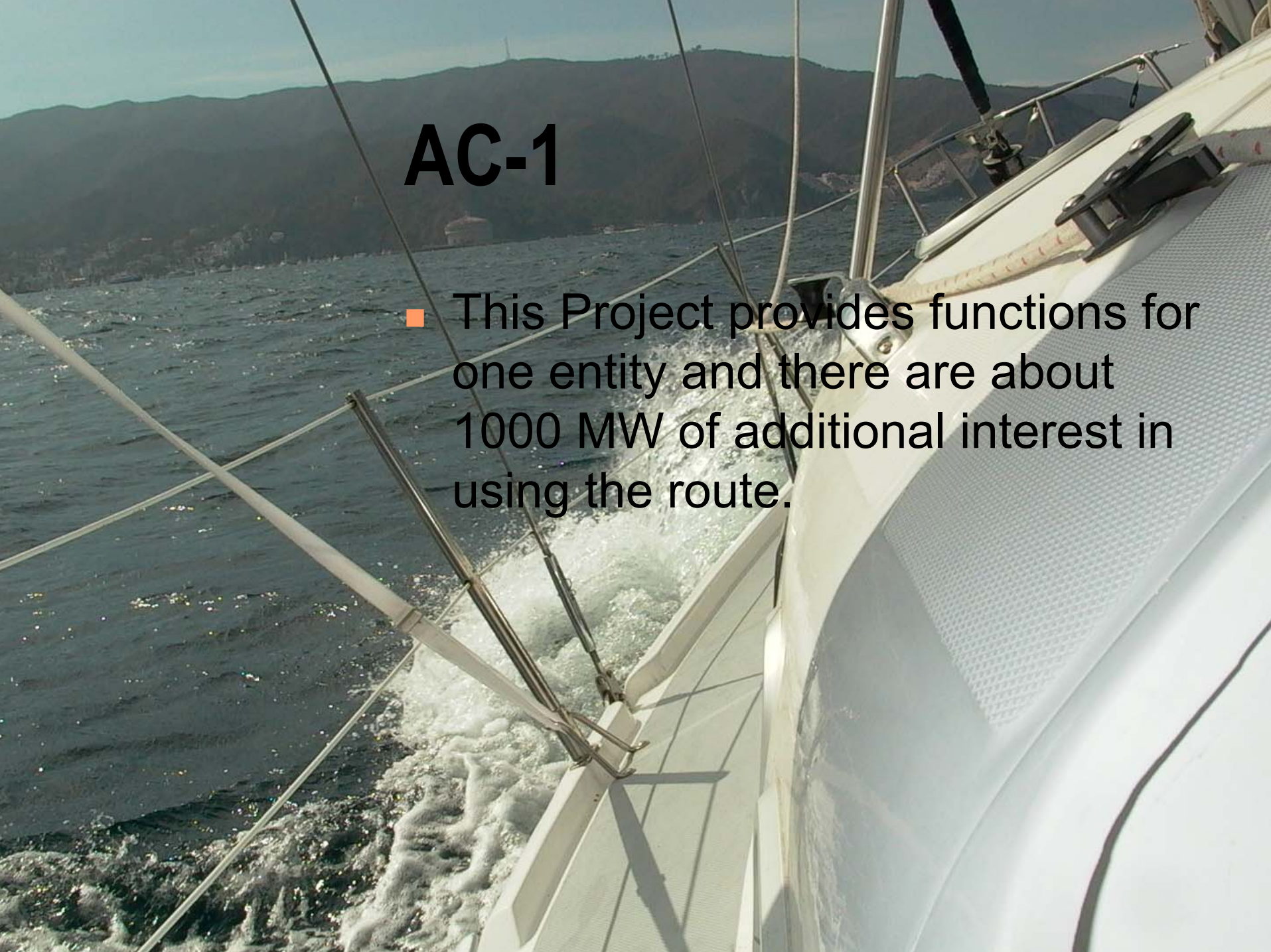
STEP SUBCOMMITTEE



- The process of AC-1 Plus AC-3 = AC-5
- The STEP SUBCOM was developed to find a compromise between the AC-1 and AC-3

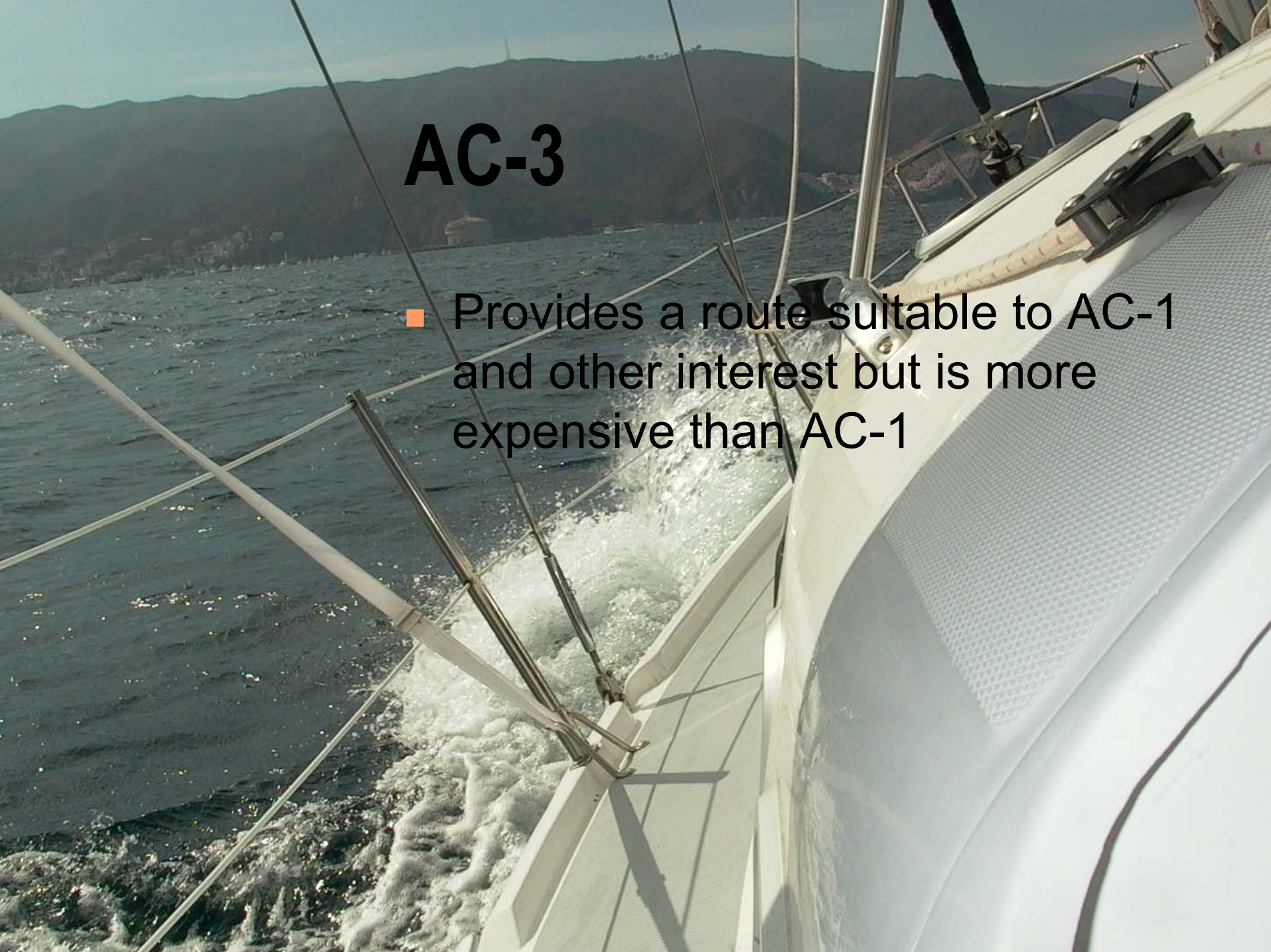
AC-1

- This Project provides functions for one entity and there are about 1000 MW of additional interest in using the route.



AC-3

- Provides a route suitable to AC-1 and other interest but is more expensive than AC-1



AC-5

- A compromise solution that takes the route of AC-1 but adds an intermediate substation able to serve the interest of AC-1 and AC-3.
- Substation at Blythe which interconnects PV Devers Number 1 and 2.
- Could be able to use both lines to achieve the needed capacity and reliability.

Study Concerns

- EOR and WOR Impacts
- Reliability concerns
 - ◆ This is a lot of capacity to achieve
 - ◆ This dumps a lot of energy at Devers
 - ◆ This has impacts along the way

Time Frames

- Study Work takes time
- SCE needs to move on
- The WECC Peer Review process provides for this situation and all are working to get it together

We are making progress

- A study plan is in development and will be reviewed at WATS tomorrow
- Base cases are mostly complete and coordinated with other transmission owners
- Meetings are coordinated between this Sub Committee and the WECC Peer Group

Next Steps

- Complete the study plan
- Allocate study efforts
- Perform studies
- Develop and prove ratings
- Obtain commitments to build
- Obtain ratings
- Develop Operations Methods
- Build

