 CALIFORNIA ISO <small>California Independent System Operator</small>	OPERATING PROCEDURE ATTACHMENT E	Procedure No.	M-432E
		Version No.	1.0
		Effective Date	8/3/05
Filling Out a MOW Request		Distribution Restriction: None	

Purpose

- MOW requests are used to request a waiver from the Must Offer obligation.
 - Use of this request is subject to CAISO Operating Procedure M-432 for:
 - Requesting a waiver
 - Granting a waiver request
 - Denying a waiver request
-

1. Creating a MOW Request

Take the following steps to create a MOW Request:

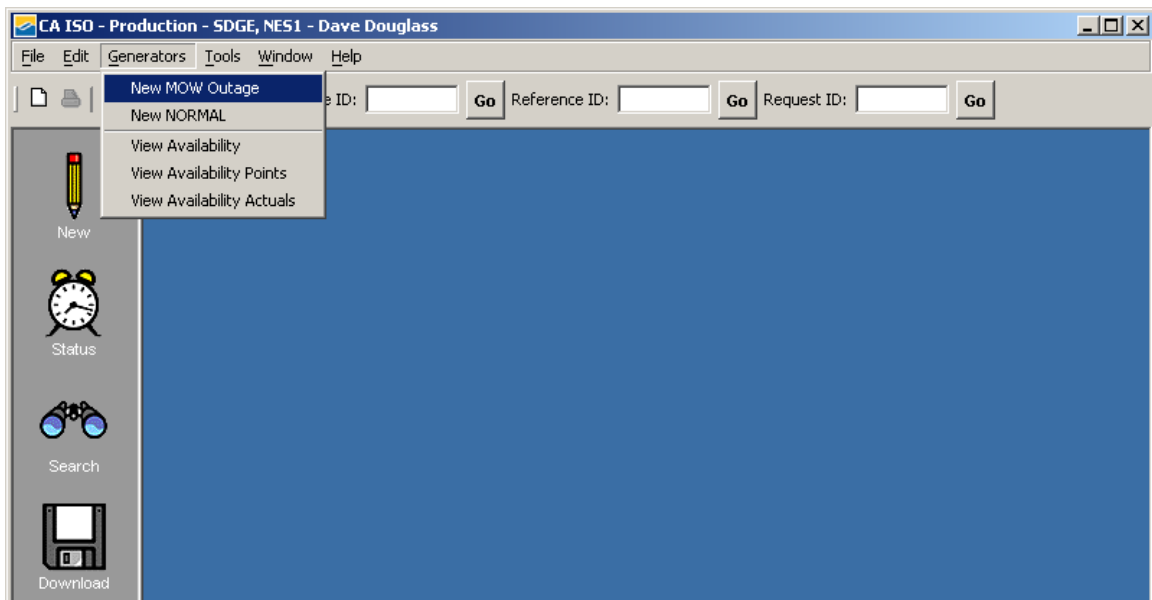



Figure 1. SLIC Homepage

Step	Action
1	Access the SLIC Homepage (refer to figure 1).
2	Click “Generators” on the Menu Bar to see the drop down window.
3	Select “New MOW Outage”.

 CALIFORNIA ISO <small>California Independent System Operator</small>	OPERATING PROCEDURE ATTACHMENT E	Procedure No.	M-432E
		Version No.	1.0
		Effective Date	8/3/05
Filling Out a MOW Request		Distribution Restriction: None	

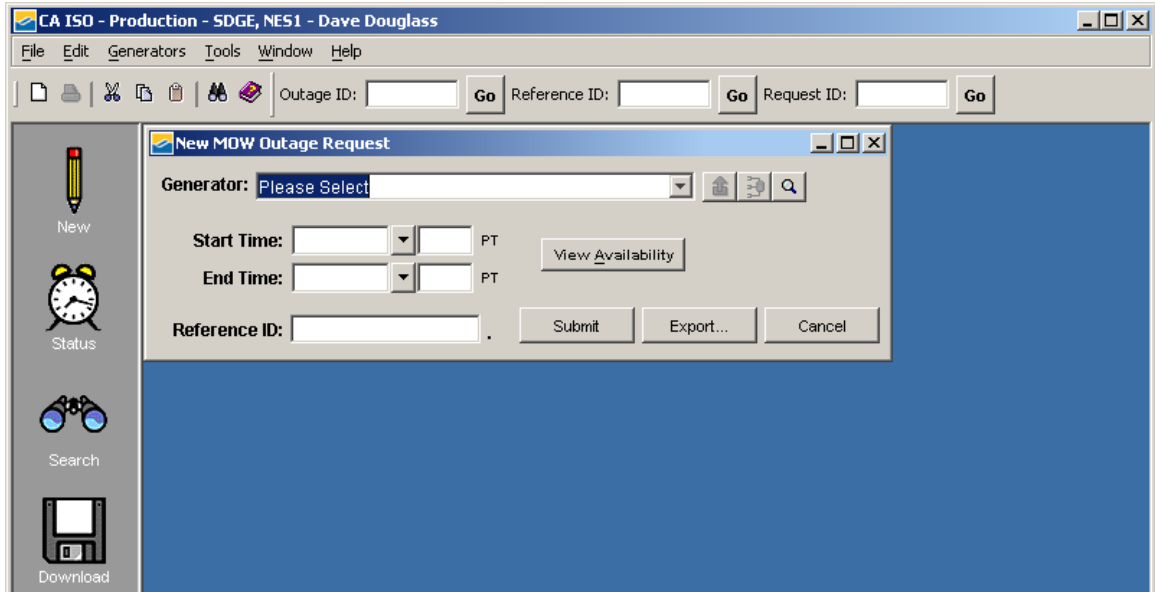



Figure 2. New MOW Outage Request Form

Step	Action
1	Select Generator (refer to figure 2).
2	Enter Start Time.
3	Enter End Time.
4	Enter Reference ID (optional).
5	Press the “Submit” button.

 CALIFORNIA ISO <small>California Independent System Operator</small>	OPERATING PROCEDURE ATTACHMENT E	Procedure No.	M-432E
		Version No.	1.0
		Effective Date	8/3/05
Filling Out a MOW Request		Distribution Restriction: None	

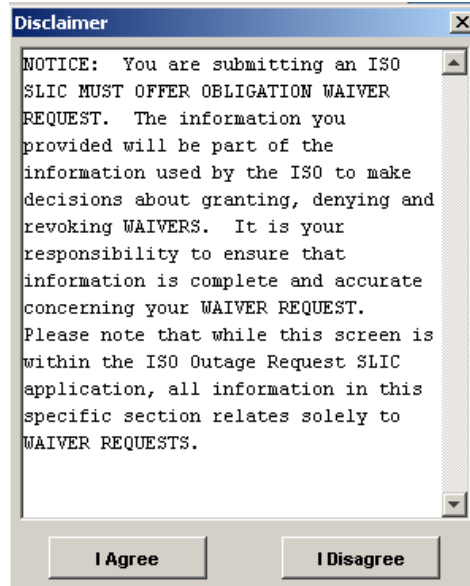


Figure 3. MOW Disclaimer

After submitting the MOW request, the user must agree to the disclaimer to proceed further. If not, the MOW request will be terminated.

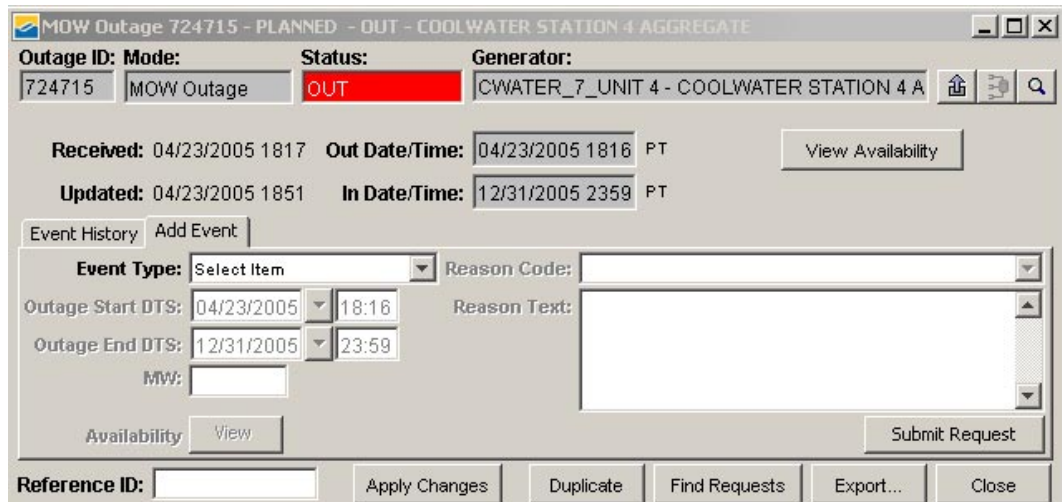


Figure 4. MOW Outage Request

Figure 4 illustrates the MOW request in the SLIC Web Client once the MOW has been granted.