



Decision on expanding metering and telemetry options (distributed energy resources provider)

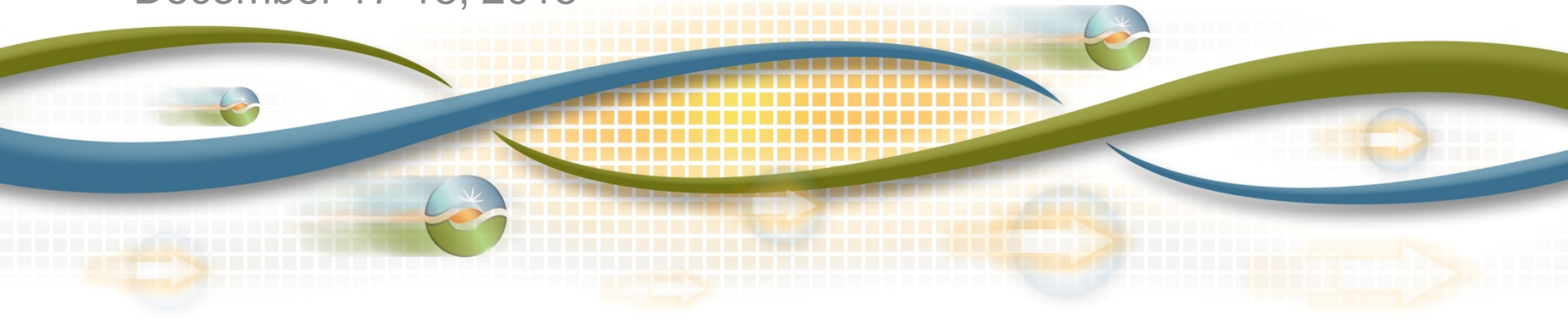
Tom Flynn

Storage & Distributed Energy Resource Policy Manager

Board of Governors Meeting

General Session

December 17-18, 2015



Limitations are needed on aggregations across multiple pricing nodes to maintain ability to manage congestion

Approved rules focus on sub-resource level

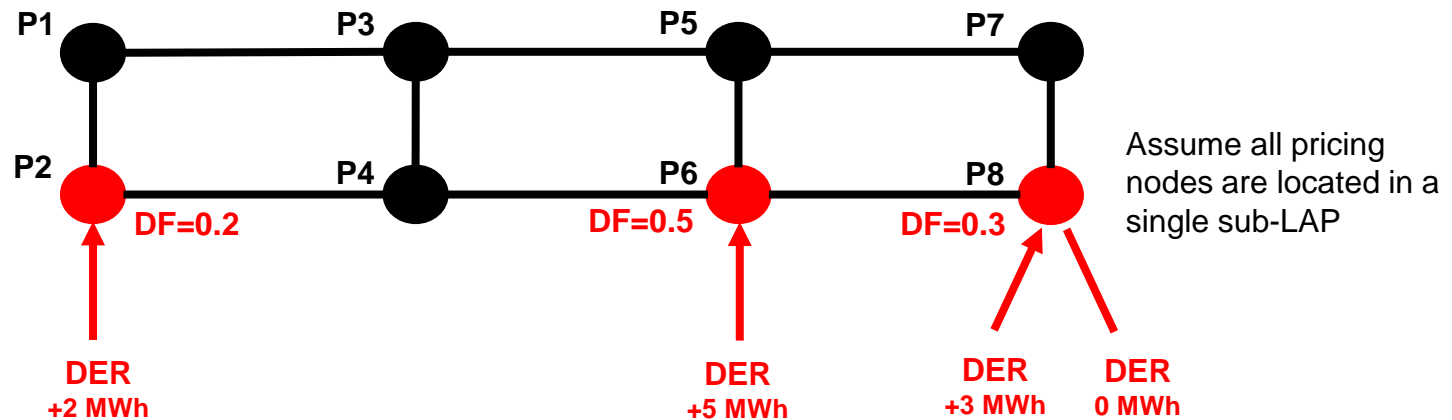
All sub-resources:

- Must be of single resource type
- Must move in the same direction
- Must operate in the same mode for storage aggregations

Proposed new rules focus on pricing node level

Net response at each pricing node must be consistent with dispatch instruction and distribution factors

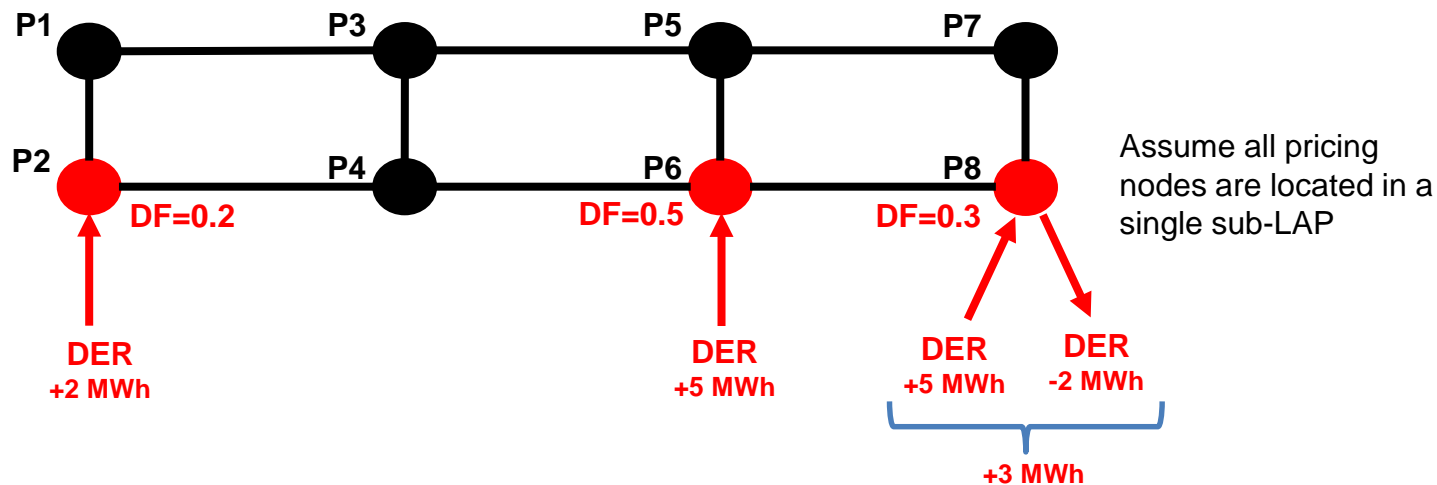
Example 1: Assume an aggregation of DER distributed across pricing nodes 2, 6 and 8.



If this aggregation gets an ISO dispatch instruction to increase output by 10 MWh, then the net response at each pricing node must be:

- +2 MWh at P2
- +5 MWh at P6
- +3 MWh at P8

Example 2: Same as previous example except sub-resources at P8 are moving in opposite directions



If this aggregation gets an ISO dispatch instruction to increase output by 10 MWh, then the net response at each pricing node must be same as previous example:

- +2 MWh at P2
- +5 MWh at P6
- +3 MWh at P8

Many stakeholders support these enhancements while some express reservations.

- Advocates and potential aggregators of distributed energy resources are very supportive.
- Distribution utilities express some reservations and concerns.
- CPUC President Picker and Commissioner Florio express support.

Management recommends that the Board approve the proposed enhancements.

- Increases flexibility for multi-pricing node aggregations to participate in the ISO market.
 - Mixing of sub-resource types would be allowed
 - Sub-resources may move in different directions
 - Storage sub-resources may operate in different modes
- Supported by many stakeholders.
- Accommodates future distribution business and/or regulatory models, including potentially a distribution system operator.