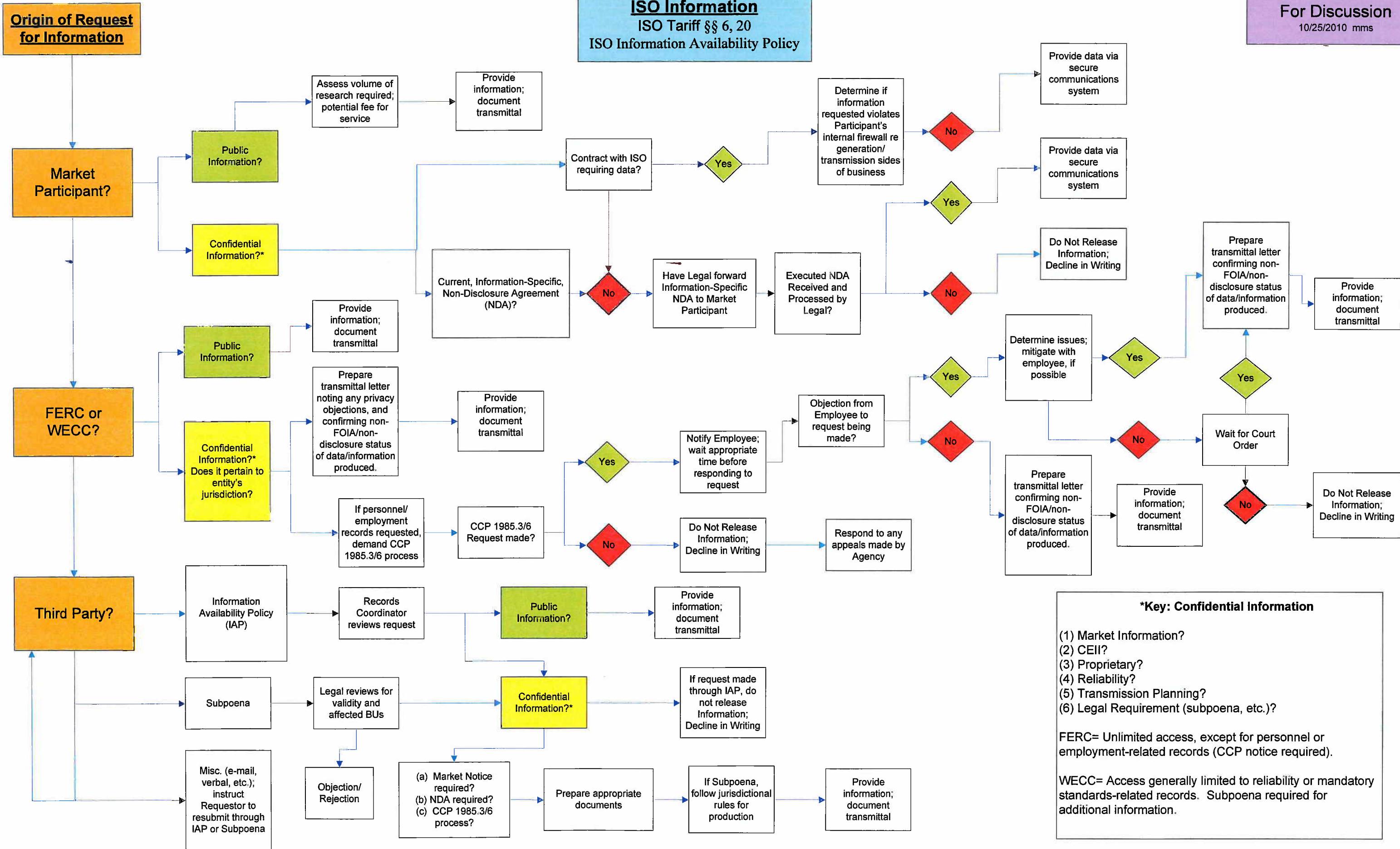


**Evaluation of Request for
ISO Information**
ISO Tariff §§ 6, 20
ISO Information Availability Policy



***Key: Confidential Information**

- (1) Market Information?
- (2) CEII?
- (3) Proprietary?
- (4) Reliability?
- (5) Transmission Planning?
- (6) Legal Requirement (subpoena, etc.)?

FERC= Unlimited access, except for personnel or employment-related records (CCP notice required).

WECC= Access generally limited to reliability or mandatory standards-related records. Subpoena required for additional information.