



California ISO

Outage Management System (webOMS) Enhancements

Deployed to the Production environment on July 15, 2021

Radha Madrigal
Customer Readiness

Updated 7/6/21

The information contained in these materials is provided for general information only and does not constitute legal or regulatory advice. The ultimate responsibility for complying with the ISO FERC Tariff and other applicable laws, rules or regulations lies with you. In no event shall the ISO or its employees be liable to you or anyone else for any decision made or action taken in reliance on the information in these materials.

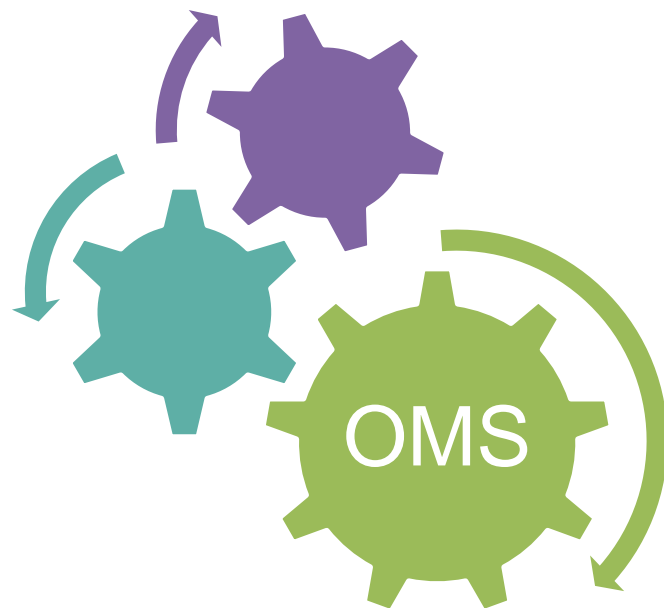
Acronyms

Abbreviation/Term	Definition
API	Application Programming Interface
A/S	Ancillary Services
EOD	End of Day
MSG	Multi-Stage Generating Resource
NGR	Non-Generating Resource
NOW	Nature of Work
OMS/webOMS	Outage Management System
OOS	Out of Service
RIMS	Resource Interconnection Management System
UI	User Interface

Overview

- This presentation highlights the following webOMS changes implemented in the Production environment across the following user populations:
 - All Users
 - CAISO and EIM
 - EIM and RC West
 - CAISO





OMS ENHANCEMENTS

Submission of Overlapping Outages for three Ambient Nature of Work (NOW) and RIMS Testing



- webOMS will allow users to submit overlapping outages for the following nature of work categories:
 - **Ambient Due to Temp** – Only forced outages are allowed for this NOW
 - **Ambient Not Due To Temp** – Only forced outages are allowed for this NOW
 - **Ambient Due to Fuel Insufficiency** – Both planned and forced outages are allowed for this NOW
 - **RIMS Testing** – Both planned and forced outages are allowed for this NOW
- For outages with a NOW of **Ambient Due to Temp** or **Ambient Not Due to Temp**, a suggested practice is to create single trade date outage cards for NOW of this type. This provides the most flexibility for changes because an outage scheduled for tomorrow is not yet in the OUT state.

Fix to Retain Historic Resource-Participant Ownership Relationship

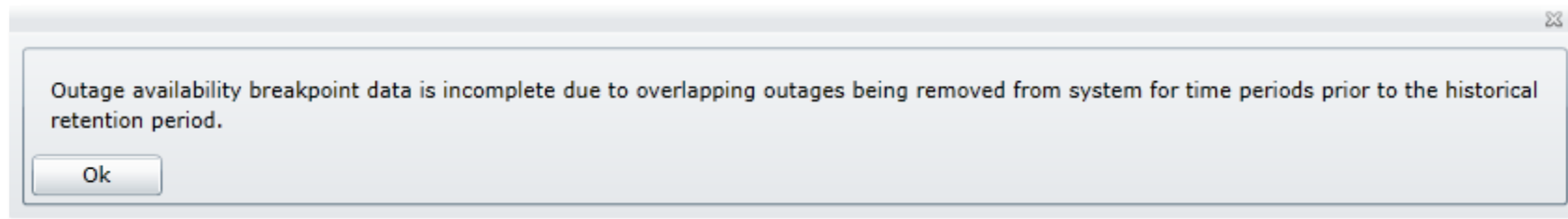
All
Users

- In some cases, when Master File sends only the future effective start dates for a particular Resource-Participant association, webOMS changes the historical start date to a later date.
- This has caused issues for participants as they are not able to see their older outages until a manual fix is applied.
- This fix addresses this issue and will preserve the historical start dates as expected.

Pop-up Referencing Availability Data for Transmission Outages (UI Impact)



- There was an incorrect pop-up box regarding resource outages that would show up on transmission outages that had a planned start date prior to 6 years and a planned end date within the last 6 years. This would occur when looking up very old outages.
- This fix will remove the erroneous pop-up (shown below).



Version ID Order Display in the Version Compare Screen (UI Impact)



- There was a display issue in the version history of the outage card. The order that versions were displayed in was not sorted in ascending order.
- This has been corrected with this patch. Example of incorrect sort order shown here:

The screenshot shows a web application interface for "Version Comparison" of an outage. The table below is a simplified representation of the data shown in the screenshot.

Outage ID 9931732	Request ID 10049290	Request ID 10050687	Request ID 9931732	Request ID 9990518
State	SUBMITTED	CANCELLED	SUBMITTED	APPROVED
Version ID	1	4	1	2
OutageChangeRequest				
State Reason				
Request User				
Requested Date				
Request User Contact				
Accept User				
Accepted Date				
Accept User Contact				
Contact User				
Contact Date				
Accept Reason				
Source				
BA/TOP Confirmed				

Modification to the Initial Query Checkbox in Flowgates Display (UI Impact)



- A fix was implemented to initialize the search when the Flowgates UI is loaded instead of using the last search.

Master File PMin Change Not Reflected in Break Point of PMin Re-rate Card (UI Impact)

All
Users

- This fix addresses the UI issue where the Pmin change was not reflected correctly in the Pmin re-rate tab for MSG resources.

Support B2B RetrieveAvailabilityService_V2 Using the Pre-calculated Availability for Multiple Resource Requests (API Impact)

All
Users

- webOMS was leveraging caching when a retrieve API request was made for a single resource. The system has been extended to leverage the same performance benefit with the caching logic when an API request is made for retrieving multiple resource outages.

Overlapping PMax Outages for Non-Generator Resource (NGR)/Battery Resources



- To help support participants for Summer Readiness, webOMS will support the creation of overlapping PMax/availability derate outages for an NGR/battery resource.
- webOMS will continue to prevent overlapping outages for other outage types, such as Load Max, Ramp Rate, A/S Availability, Max Energy Limit and Min Energy Limit.

Overlapping PMax Outages for Non-Generator Resource (NGR)/Battery Resources



The following examples demonstrate overlapping outages that are allowed:

Scenario	Outage 1	Outage 2
1	Has PMax curtailment or OOS and one or more of LoadMax, Max Energy, Min Energy, etc.	Overlapping outage with a PMax or OOS curtailment
2	Has PMax curtailment or OOS	PMax curtailment or OOS and one or more of Load Max, Max Energy, Min Energy, etc.
3	Has PMax curtailment or OOS	Overlapping outage with one or more of Load Max, Max Energy, Min Energy, etc.

Performance Issue Causing Late Automatic State Transitions



- A fix has been implemented to address the performance issue impacting the workflow engine that was seen when there were several overlapping outages involving large aggregates and MSGs which had the same start and end date/times.

Prevent Extension of Planned CAISO Outage



- Once the outage starts, all planned and forced CAISO outages will be prevented from being extended beyond the EOD of the planned end date.

Prevent Curtailment Increase of Planned CAISO Outage



- Once the outage starts, all planned and forced CAISO outages will be prevented from increasing the MW derate on the outage beyond the maximum curtailment for that trade date.
- In the case where an outage is extended, webOMS will limit the curtailment to the previously approved maximum curtailment on the trade date of the planned end date.

Cancel pending requests prior to automatically denying outages



- With the implementation of Resource Adequacy Enhancements, webOMS denies outages that have yet to start once instructed by the resource adequacy system.
- When this happens, outages with pending requests are also denied and the pending requests remain in the pending state. This prevents participants from creating new outages until the pending request has been rejected by the ISO.
- With this enhancement, the pending request will automatically be rejected prior to the denial, thus requiring no further manual intervention.



- **CAISO Users:** webOMS training CBTs are located on the Market Participant Portal
 - **EIM Users:** webOMS training CBTs are located on the Western EIM Portal
 - **RC West Users:** webOMS training CBTs are located on the RC West Portal

www.caiso.com