



# Market Performance Report for May 2009

Alan G. Isemonger  
Manager, Market Information

ISO Board of Governors Meeting  
General Session  
July 20, 2009

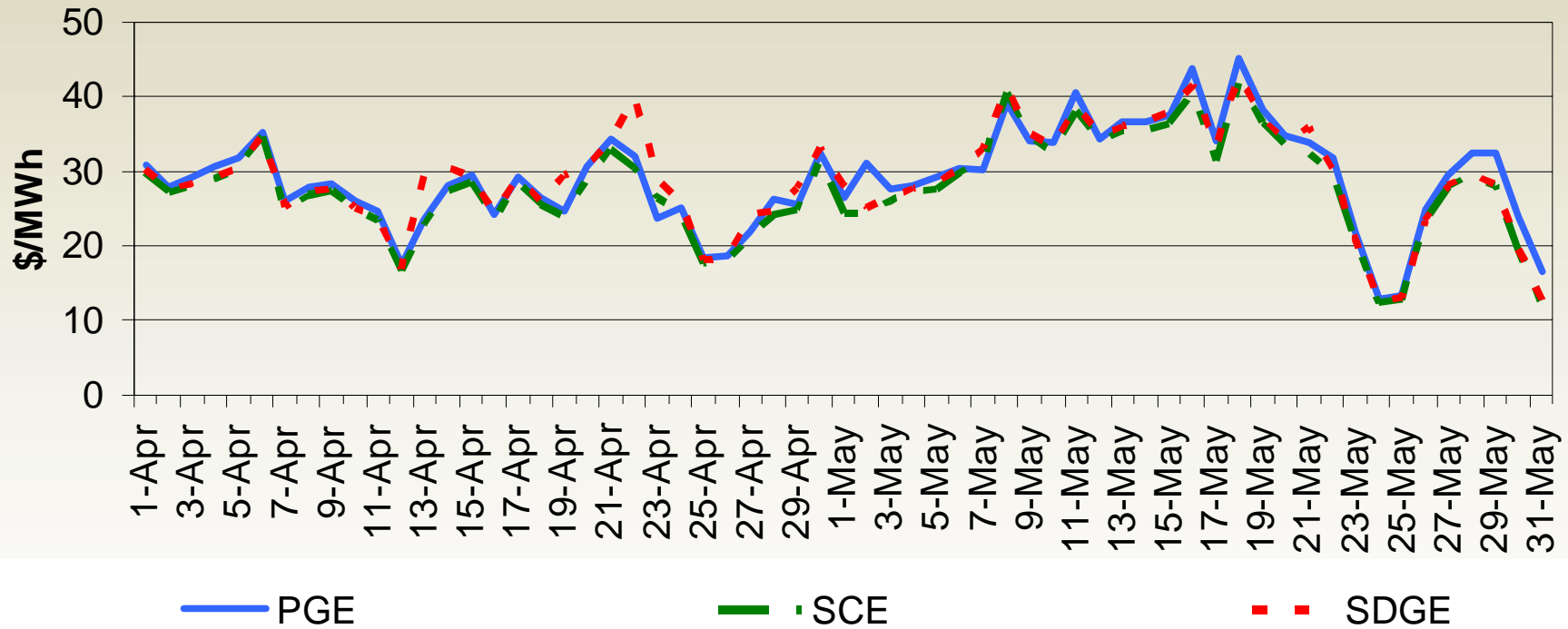
## Market Highlights

- IFM average prices were moderate
- IFM Ancillary Service cost-to-load was \$0.42/MWh.
- Real-Time prices had less variation in May than April

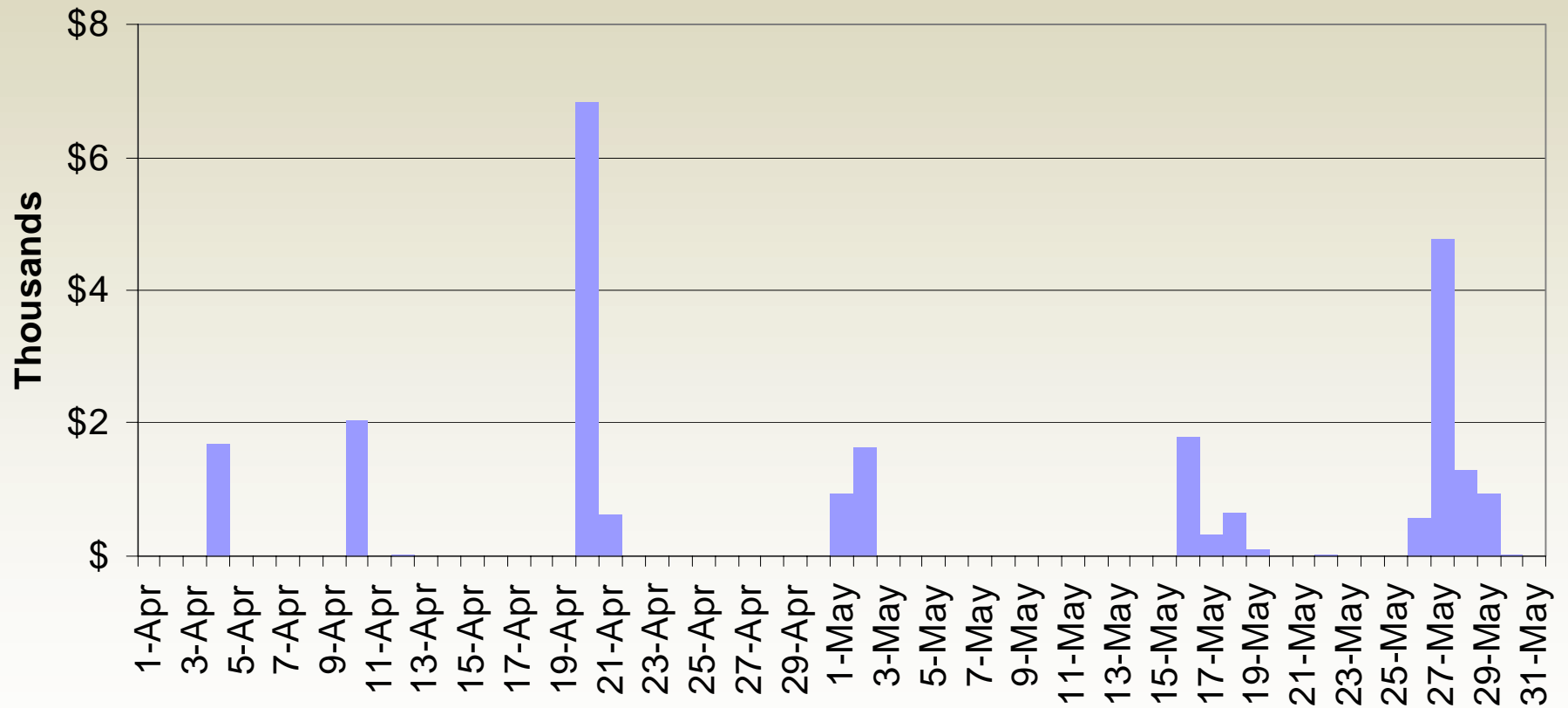
# Monthly Market Performance Metrics

Monthly Metrics	April	May
Average Gas Price	\$3.22	\$3.54
Average On-Peak Contract Price	\$28.53	\$32.57
DA Weighted Average DLAP LMP	\$26.84	\$30.62
RTD Weighted Average DLAP LMP	\$42.04	\$41.77
Percent of Intervals with DLAP Price Spikes Over \$250 for DA	0%	0%
Percent of Intervals with DLAP Price Spikes Over \$250 for RTD	3.92%	2.46%
Percent Cost Incurred when DLAP over \$250 for RTD	52%	43%
DA AS Cost (\$ per MWh)	\$0.52	\$0.42

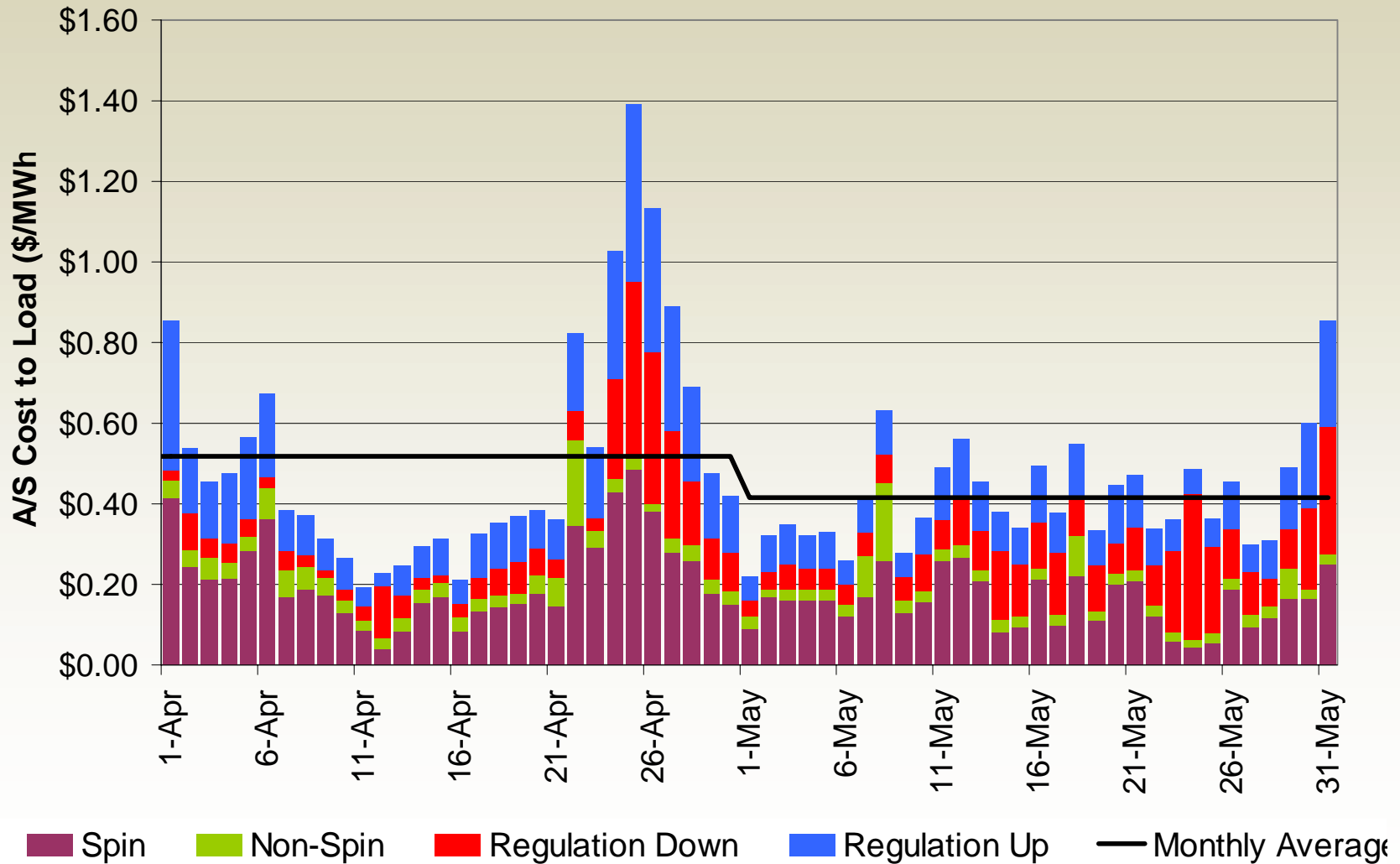
# Day-Ahead Weighted Average LAP Prices were moderate



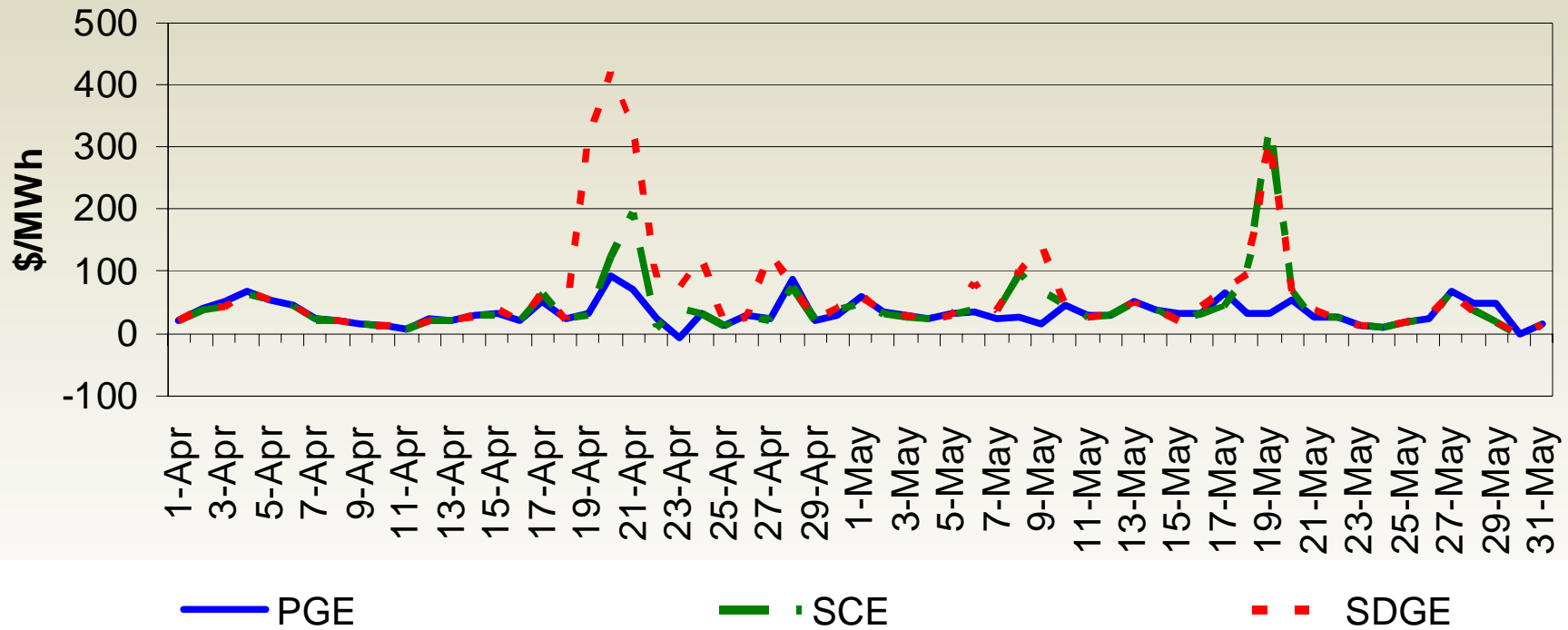
# Monthly total RUC cost rose to \$12,297 in May from \$11,181 in April



# Day-Ahead ancillary services average cost-to-load declined to \$0.42 from \$0.52



# Real-Time Weighted Average LAP Prices were less variable



# IFM total congestion cost for inter-ties rose to \$10.45 million in May

