



# Market Performance Report for June and July 2009

Alan G. Isemonger  
Manager, Market Information

ISO Board of Governors Meeting  
General Session  
September 10, 2009

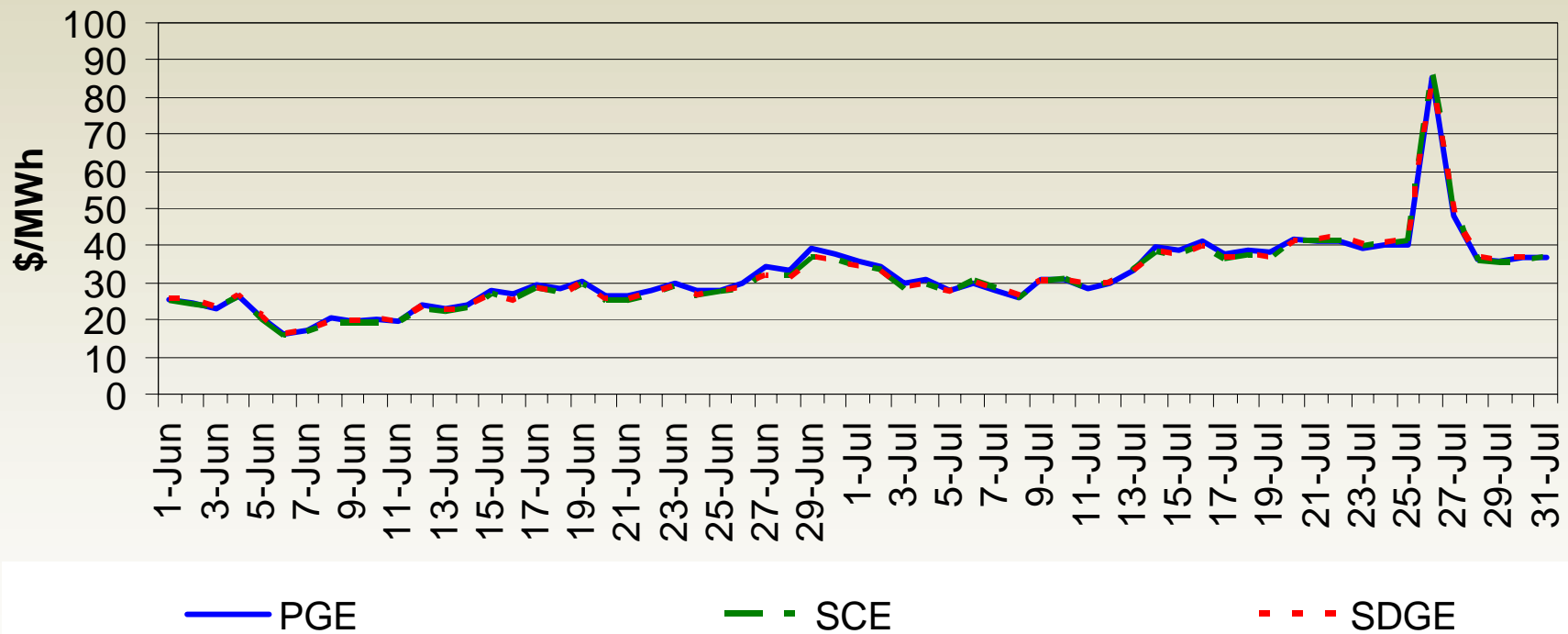
## Market Highlights

- IFM average prices were moderate in June and most days of July
- System Ancillary Service cost-to-load was \$0.33/MWh for June and \$0.43 for July
- Real-Time prices were moderate in June, but more volatile in July

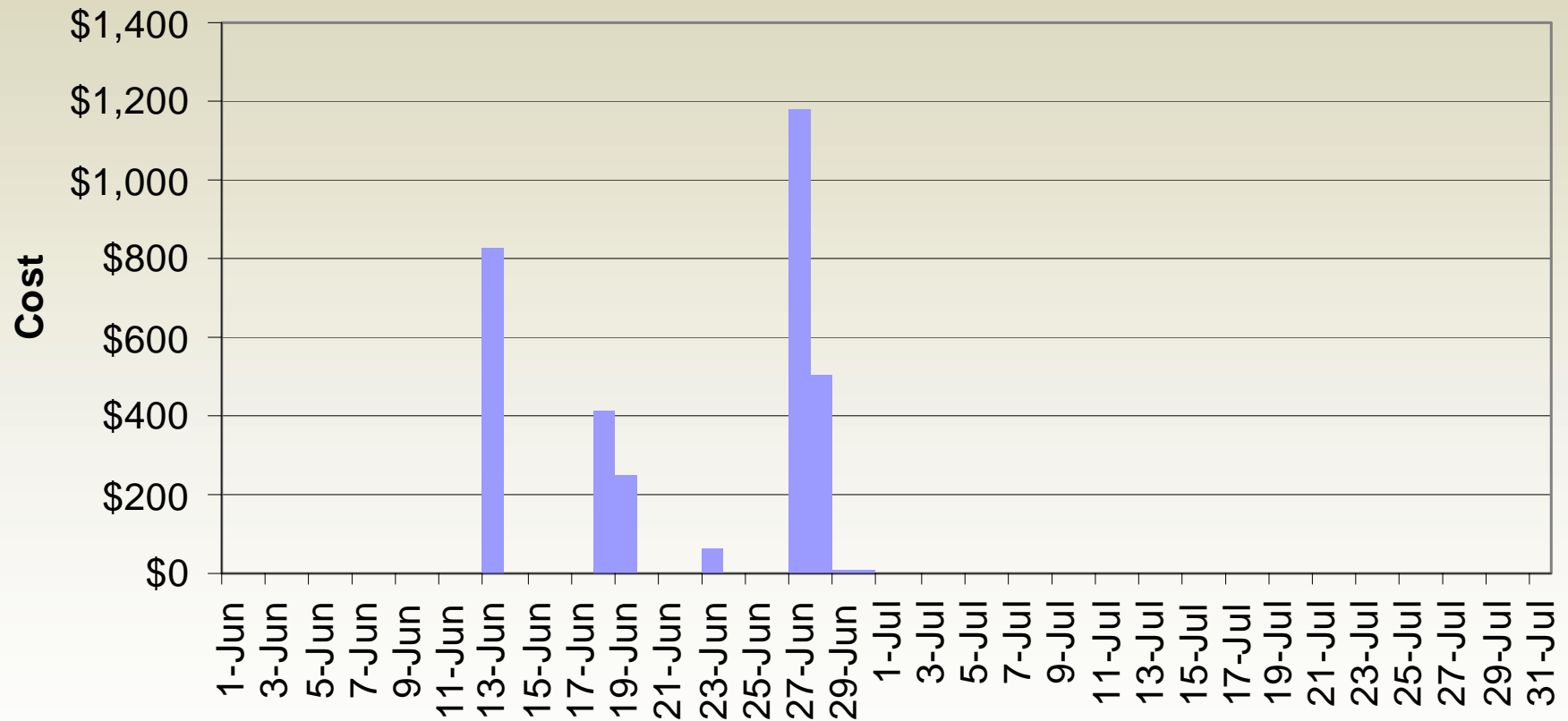
# Monthly Market Performance Metrics

Monthly Metrics	April	May	June	July
Average Gas Price	\$3.22	\$3.54	\$3.10	\$3.34
Average On-Peak Contract Price	\$28.53	\$32.57	\$27.78	\$36.61
DA Weighted Average DLAP LMP	\$26.84	\$30.62	\$26.14	\$37.26
RTD Weighted Average DLAP LMP	\$42.04	\$41.77	\$24.86	\$35.11
Percent of Intervals DLAP Price Spikes Over \$250 for DA	0%	0%	0%	0.27%
Percent of Intervals DLAP Price Spikes Over \$250 for RTD	3.92%	2.46%	0.89%	1.69%
Percent Cost Incurred when DLAP over \$250 for RTD	52%	43%	21%	20%
System AS Cost (\$ per MWh)	\$0.61	\$0.44	\$0.33	\$0.43
CRR Revenue Adequacy Ratio	79.67%	83.15%	93.48%	110.44%

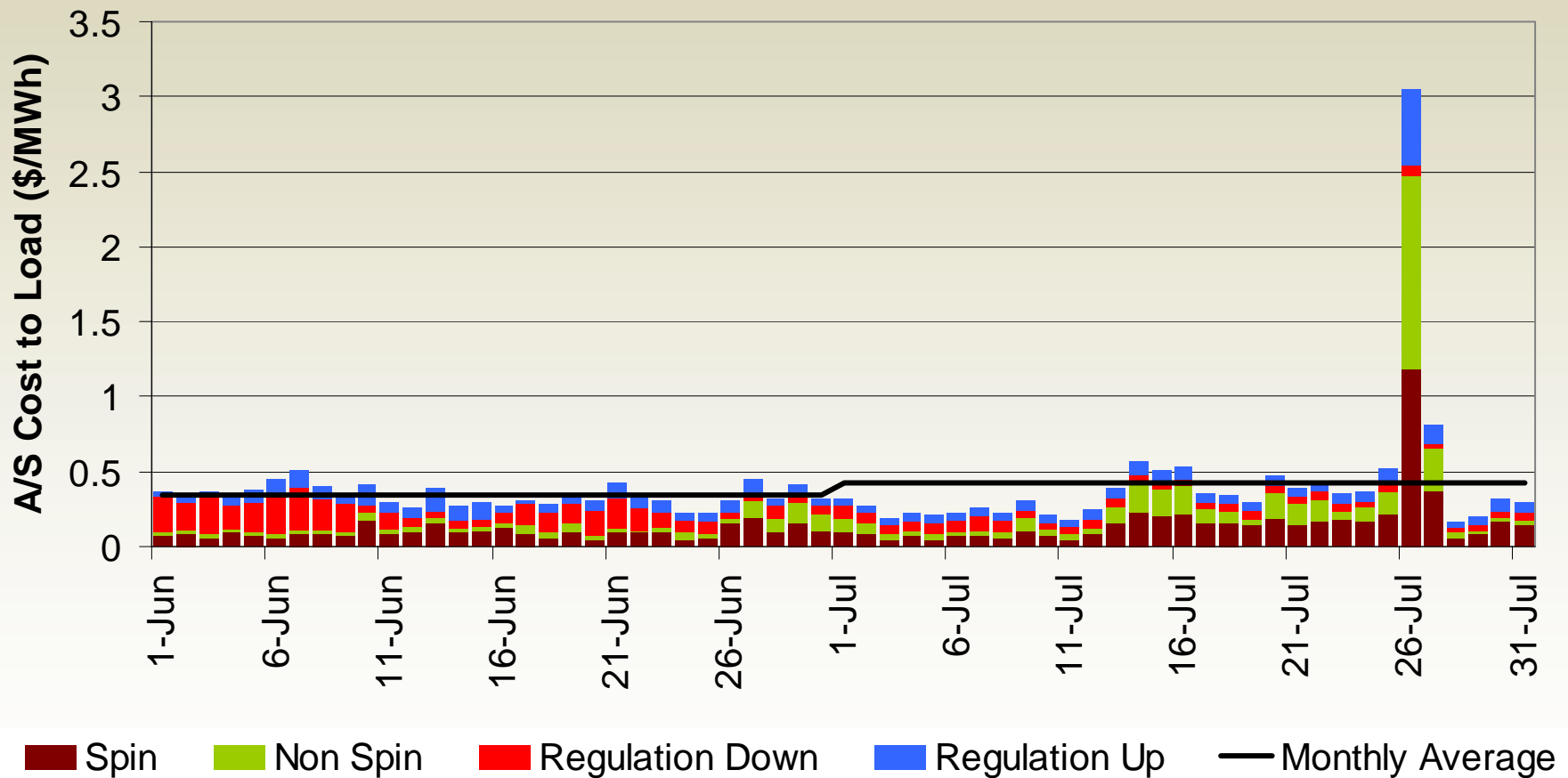
# Day-Ahead Weighted Average LAP Prices were moderate in June and most days of July



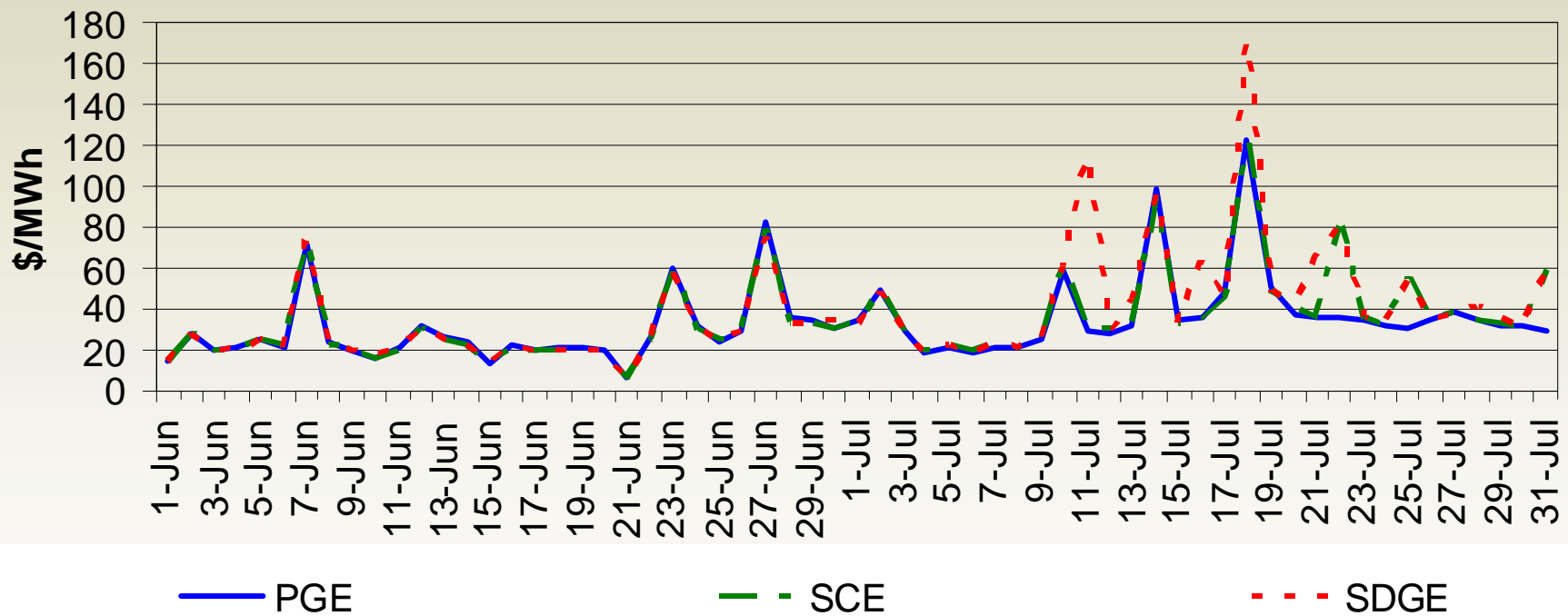
# Monthly total RUC cost was \$3,236 in June and \$0 in July



# System (Day-Ahead and Real-Time) A/S average cost-to-load was \$0.33 for June and \$0.43 for July



# Real-Time Weighted Average LAP Prices were moderate in June and more volatile in July



IFM total congestion rent for interties was \$4.64 million in June and \$3.98 million in July

