



Market Performance Report for March 2010

Alan G. Isemonger
Manager, Market Information

ISO Board of Governors Meeting
General Session
May 17-18, 2010

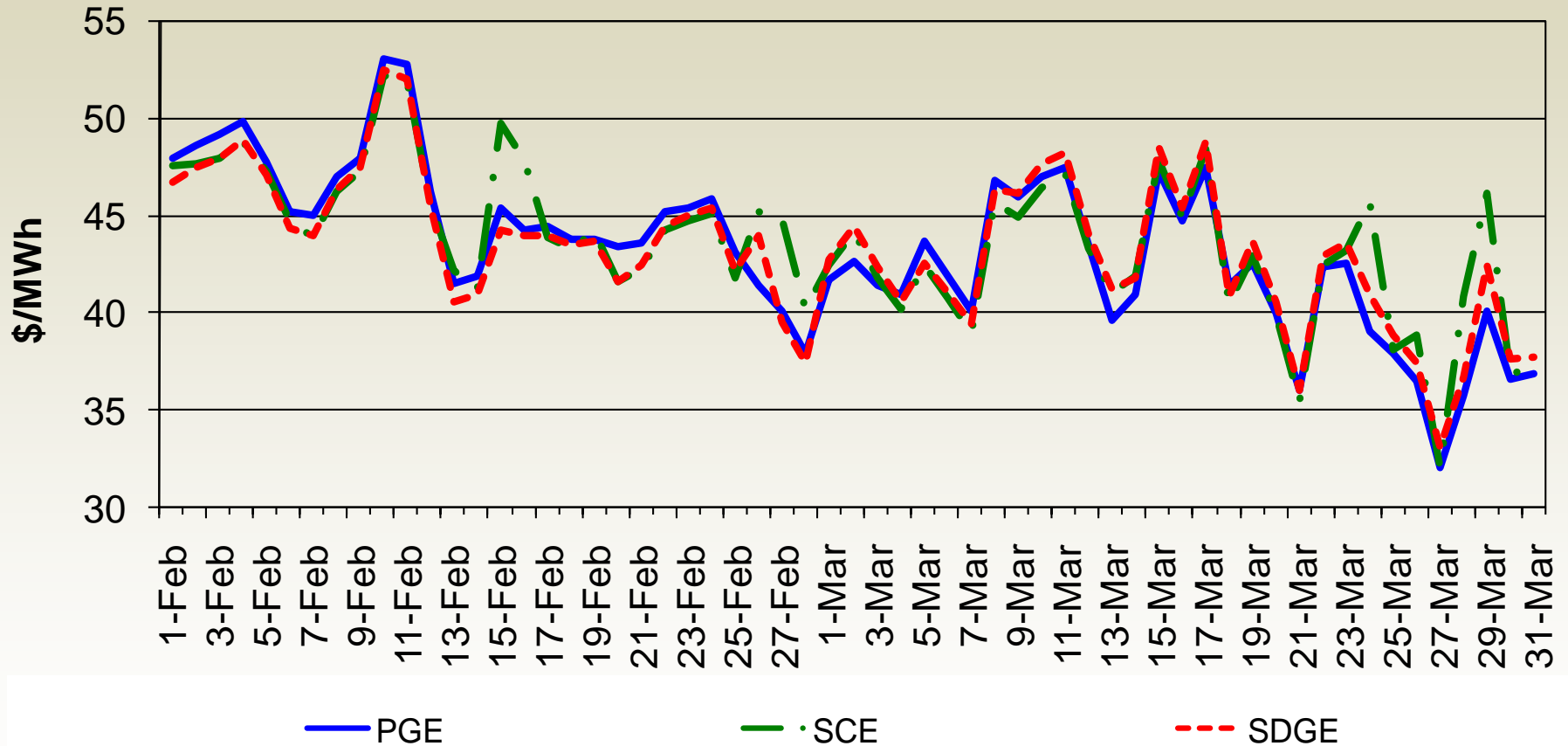
Market Highlights

- Day-ahead energy prices declined in March
- Real-time energy prices were generally stable.
- System ancillary service cost-to-load remained low at \$0.35/MWh in March.
- Congestion revenue rights deficiency allocation to load was -\$0.41M

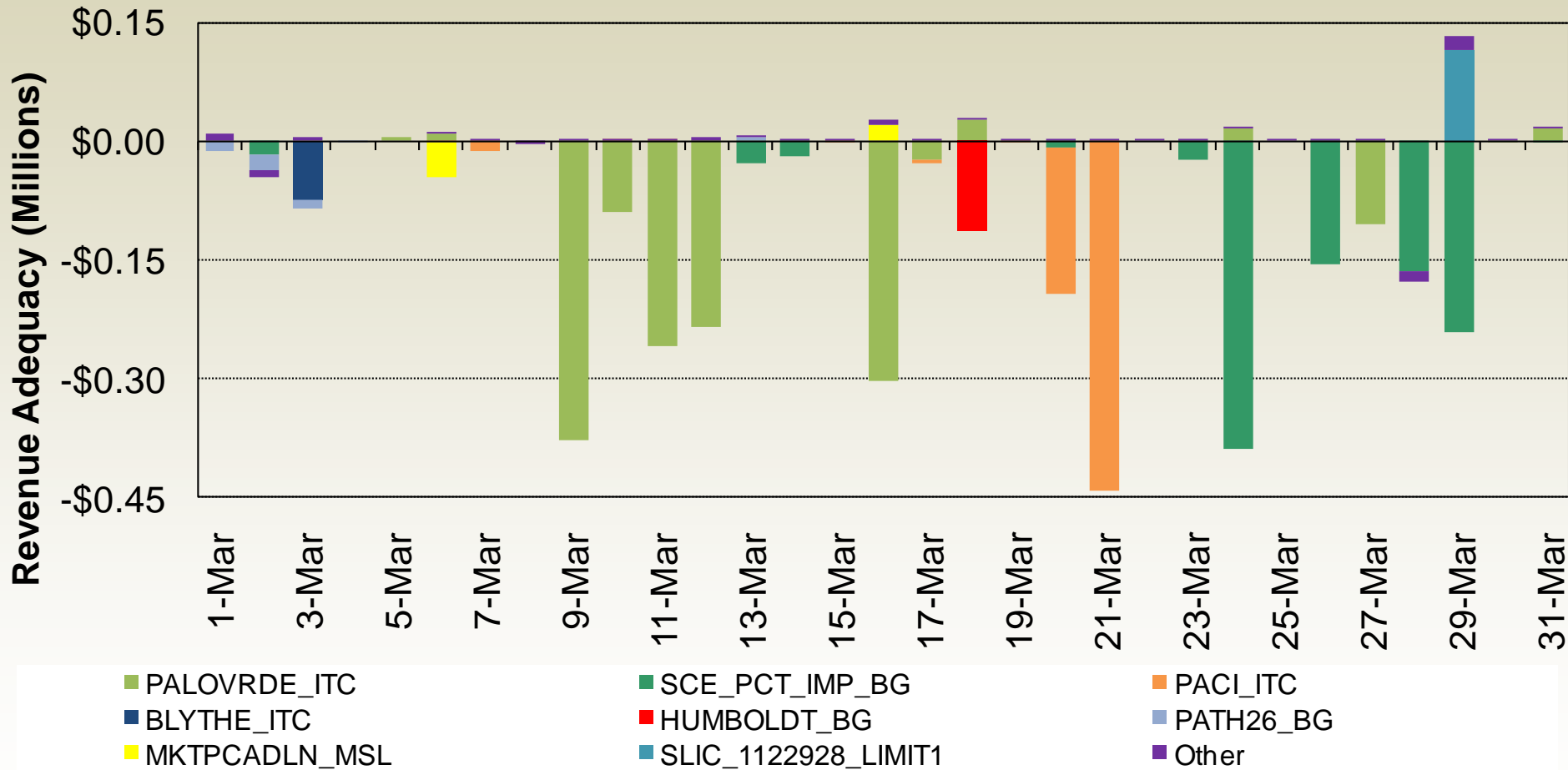
Monthly Market Performance Metrics

Monthly Metrics	October	November	December	January	February	March
Average Gas Price	\$4.50	\$3.97	\$5.73	\$5.87	\$5.42	\$4.58
DA Weighted Average DLAP LMP	\$44.13	\$35.08	\$49.15	\$49.15	\$45.46	\$41.82
RTD Weighted Average DLAP LMP	\$46.66	\$35.44	\$50.45	\$50.44	\$46.92	\$41.54
Percent of Intervals DLAP Price Spikes Over \$250 for DA	0%	0%	0%	0%	0%	0%
Percent of Intervals DLAP Price Spikes Over \$250 for RTD	1.67%	0.36%	0.86%	0.93%	1.10%	0.53%
Percent Cost Incurred when DLAP over \$250 for RTD	14%	6%	9%	13%	10%	6%
System AS Cost (\$ per MWh)	\$0.31	\$0.32	\$0.36	\$0.31	\$0.30	\$0.35
CRR Revenue Adequacy Ratio	105.20%	87.53%	74.03%	64.74%	69.57%	67.18%

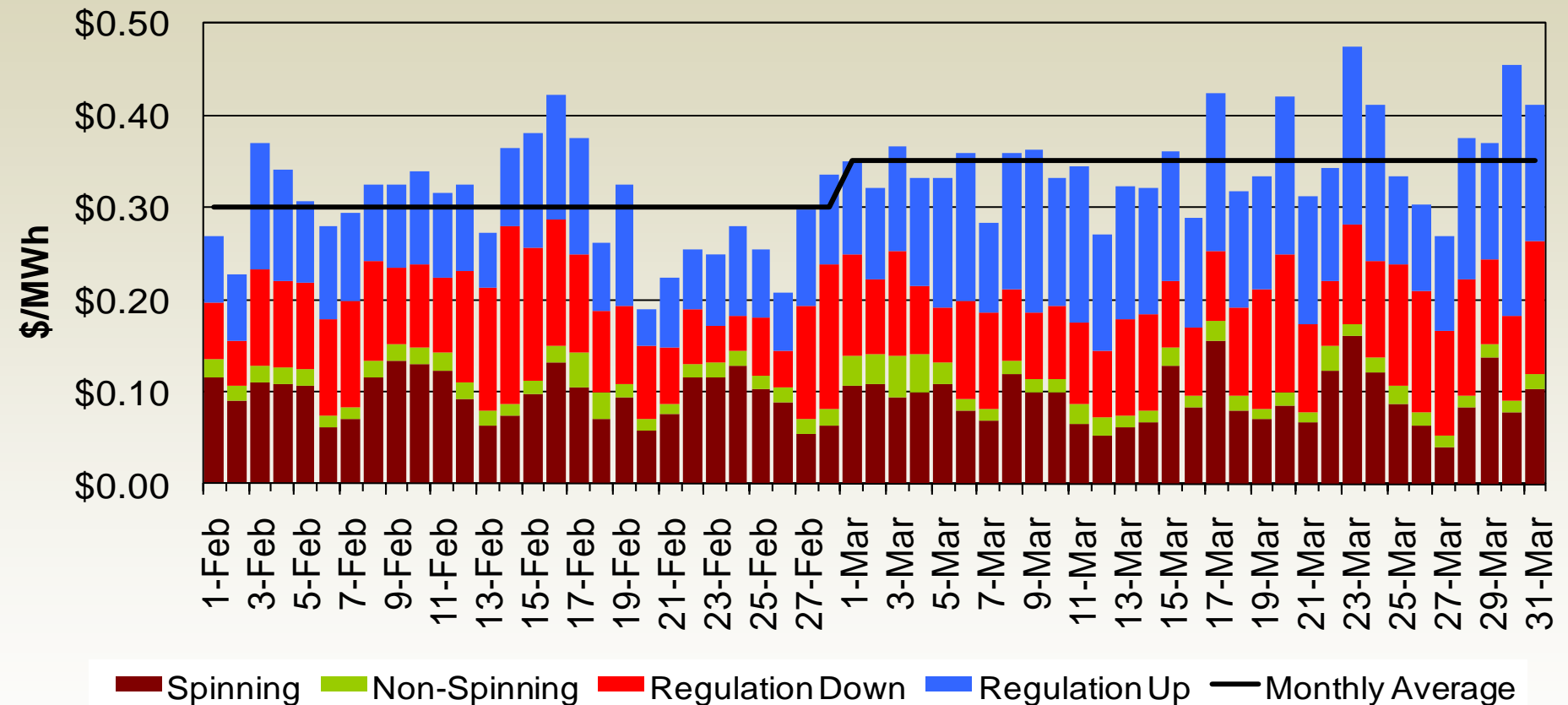
Day-ahead weighted average load aggregation point prices were moderate.



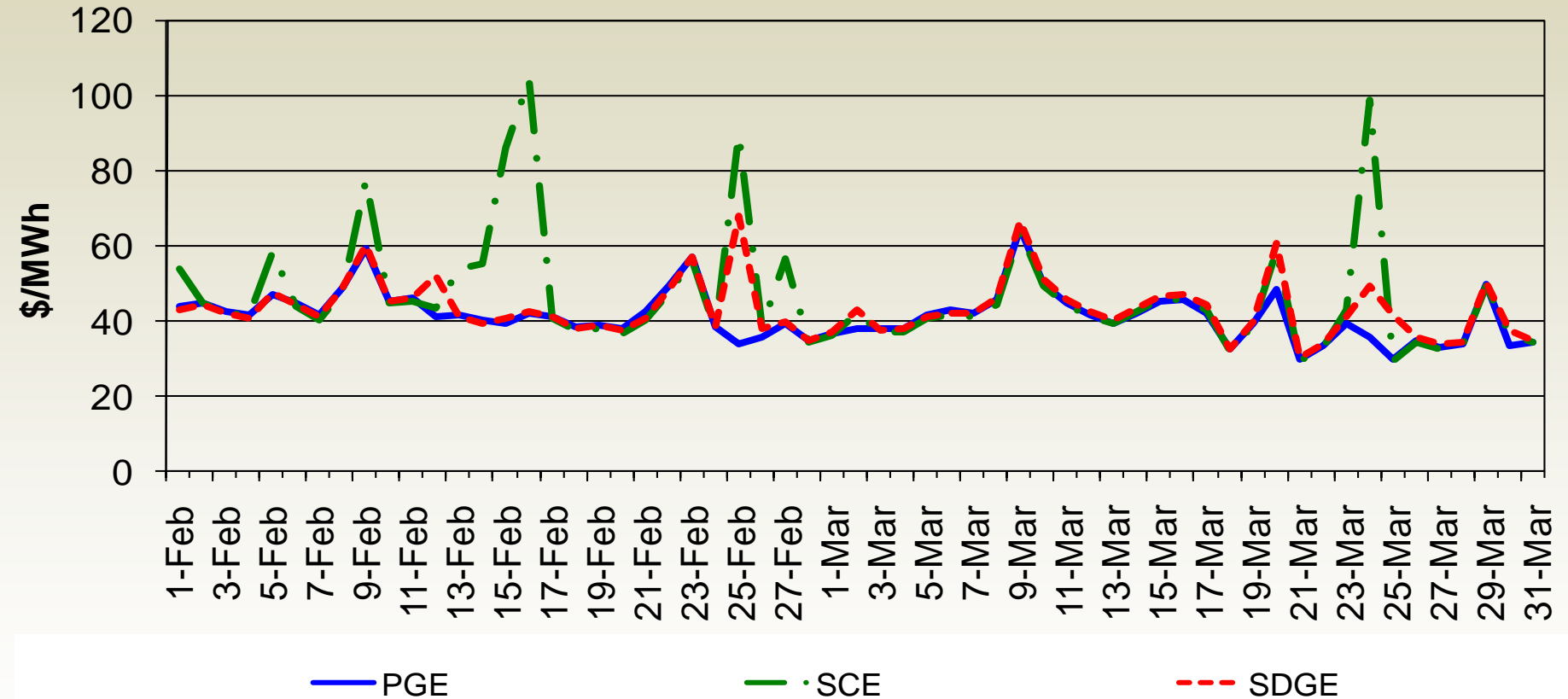
Congestion revenue rights neutrality allocation to load was **-\$0.41 million** in March.



System ancillary service average cost-to-load remained low at \$0.35/MWh in March.



Real-time weighted average load aggregation point prices were stable on most days.



Integrated forward market total congestion rent for interties increased to \$3.28M in March from \$1.83M in February.

