



California Independent
System Operator Corporation

August 17, 2009

The Honorable Kimberly D. Bose
Secretary
Federal Energy Regulatory Commission
888 First Street, NE
Washington, DC 20426

**Re: California Independent System Operator Corporation
Docket Nos. ER06-615-____, ER07-1257-____, ER08-1178-____,
and EL08-88-____
Exceptional Dispatch and Market Disruption Reports**

Dear Secretary Bose:

The California Independent System Operator Corporation (“ISO”) hereby submits the following periodic reports in these proceedings: (1) the ISO’s report regarding Exceptional Dispatches that occurred during the time period from June 16 to July 15, 2009, and the ISO’s final report regarding Exceptional Dispatches that occurred during the time period from April 16 to May 15, 2009;¹ and (2) the ISO’s report regarding Market Disruptions that occurred during the time period from June 16 to July 15.²

In addition to the data provided in the attached report, the ISO also wishes to provide the Commission with additional information relevant to the Commission’s consideration of a pending request in these proceedings for a technical conference on Exceptional Dispatch issues. As the ISO explained in the answer it filed on July 21, 2009, there is no immediate need to hold a technical conference on Exceptional Dispatch. Since the answer was submitted, the ISO has established a team of personnel actively working on ways to reduce the use of Exceptional Dispatch with the initial focus on reducing the use of Exceptional Dispatch in the day-ahead time frame. Early data results for the past few weeks indicate a significant decrease day-ahead Exceptional Dispatches.

¹ The ISO submits the Exceptional Dispatch report pursuant to *California Independent System Operator Corp.*, 126 FERC ¶ 61,150 (2009), Section 34.9.4 of the ISO Tariff, and the answer to comments that the ISO filed on April 28, 2009, in Docket Nos. ER08-1178-000 and EL08-88-000.

² The ISO submits the Market Disruption report pursuant to *California Independent System Operator Corp.*, 126 FERC ¶ 61,211 (2009), and Section 7.7.15.4 of the ISO Tariff.

The Honorable Kimberly D. Bose
August 17, 2009
Page 2

The ISO expects that this decrease will be reflected in the data in its next periodic Exceptional Dispatch report.

As previously requested, the ISO's focus should be on reducing the frequency of Exceptional Dispatch during the first few months of operations of the new market. That is why the ISO has requested that in the event the Commission concludes that a technical conference is appropriate, that it be held not until after six months of operations and enough time to evaluate the data. Any such conference should be limited to discussing the frequency of and reasons for Exceptional Dispatches and proposals for reducing the need to rely on Exceptional Dispatch authority.

Please contact the undersigned with any questions.

Respectfully submitted,

/s/ Sidney M. Davies

Sidney M. Davies
Assistant General Counsel
Anna A. McKenna
Senior Counsel
California Independent System
Operator Corporation
151 Blue Ravine Road
Folsom, CA 95630
Tel: (916) 351-4400



California ISO
Your Link to Power

**Exceptional Dispatch Report
June 16 to July 15, 2009**

and

**Final Exceptional Dispatch
Report
April 16 to May 15, 2009**

August 17, 2009

ISO Market Services

I. Background

This Exceptional Dispatch report provides the following detail as stated in the ISO's answer to comments and protests on the March 23 compliance filing:

- The frequency of Exceptional Dispatches (*i.e.*, the ISO will identify each Exceptional Dispatch and the date or dates on which it occurred);
- The gross volume in MW of Exceptional Dispatch;
- The cause of the Exceptional Dispatch (*e.g.*, transmission outages on a particular line) and the reason that an Exceptional Dispatch was necessary;
- The cost of the Exceptional Dispatch, which would include Exceptional Dispatch Energy, Excess Cost Payments for Exceptional Dispatches, Exceptional Dispatch ICPM payments, and supplemental revenues;
- The degree of mitigation achieved by the Exceptional Dispatch, *i.e.*, whether any Exceptional Dispatch Bids are mitigated;
- The location of the exceptionally dispatched resources at the level of Local Reliability Area if relevant and applicable and to the extent such information is readily determinable; and
- The market in which the Exceptional Dispatch occurred.¹

II. Report on Exceptional Dispatches Occurring from June 16, Through July 15, 2009

The ISO's report on Exceptional Dispatches that occurred during the time period from June 16 through July 15, 2009, is provided in through Figure 5 and Attachment A, below.

For each day, Figure 1 identifies the number of Exceptional Dispatches that were Pre-Integrated Forward Market (IFM) Unit Commitments, Post-IFM Unit Commitments, Real-Time dispatches or Intertie dispatches (both HASP and Real-Time). In addition, Attachment A identifies resource's Local Reliability Area where applicable for each Exceptional Dispatch.

¹ April 28 Answer at 9-10.

Except as noted below, this report provides all available Exceptional Dispatch information specified in Section 34.9.4 and the April 28 Answer.² The only exception is the degree of mitigation because that information is really only relevant for Trading Days occurring on and after August 1, 2009 when only Bids for non-competitive constraints and Delta Dispatch will be mitigated. For the first four months of operations under the new market (*i.e.*, through the end of July), all Bids that are settled at the higher of Bid price, Resource-Specific Interval Locational Marginal Price (“LMP”), or Default Energy Bid price are subject to Bid mitigation other than for decremental Exceptional Dispatches.³

Attachment A includes an entry for each Exceptional Dispatch that occurred for Operating Days June 16 through July 15. Each entry indicates: (1) the date of the Exceptional Dispatch; (2) the location of the resource by Participating Transmission Owner Service Area; (3) the Local Reliability Area where applicable; (4) the market in which the Exceptional Dispatch occurred (Day-Ahead vs. Real-Time); and (5) the reason for the Exceptional Dispatch. Note that Exceptional Dispatches that are required due to a failure of the Hour-Ahead Scheduling Process (“HASP”) are considered to be Real-Time dispatches. Many of the reasons listed are self-explanatory and may include such things as transmission or generator outages, over-generation and resource ramping constraints, and references to specific Operating Procedures (*e.g.*, Operating Procedures T-138 and G-219).⁴ The reason labeled “Software Limitation” captures a number of different instances where ISO Operators issued Exceptional Dispatches to augment or modify market instructions for reasons such as: (1) the need to keep a resource on that had previously been issued a market dispatch to shut down or was already subject to an Exceptional Dispatch but the software was instructing the resource to ramp down to zero generation; (2) to reverse a market instruction to a unit that was either off or on to stay off or on when the software was trying to give an opposite instruction; and (3) to keep a unit off or on to manage the unit’s start-up and shut down requirements. The need for some of these Exceptional Dispatches has led to the recognition of variances in the software that are being addressed. Other Exceptional Dispatches in this category relate to the fact that the software does not consider a long enough time horizon to manage a resource’s operating constraints. With respect to this constraint, the ISO has already initiated a project to enhance the market software.

² See Section I.A, above.

³ Section 34.9.1 of the CAISO Tariff allows the ISO to accept a Bid from a Non-Dynamic System Resource, in which case the ISO will pay the resource as Bid without mitigation and without triggering any supplemental compensation in the form of an Interim Capacity Procurement Mechanism (“ICPM”) payment or supplemental revenues.

⁴ A list of all of the ISO’s Operating Procedures and all the publicly available Operating Procedures are available at the following link:
<http://www.aiso.com/thegrid/operations/opsdoc/index.html>.

For the reporting period June 16 through July 15, Attachment A identifies 656 instances of Exceptional Dispatch, a four percent increase in frequency above the 631 instances occurring during the immediately previous reporting period of May 16 through June 15, 2009. The most significant trend in the data in Attachment A is the sharp decline in the frequency of intertie Exceptional Dispatches which fell markedly from 29 percent in the previous reporting period to slightly above 7 percent in current reporting period. The decline in intertie dispatches is largely the result of a sharp decline in the occurrence of HASP failures. Correspondingly, the frequency of Real-Time Exceptional Dispatches for generation increased to 55 percent of the total from 32 percent in the previous period, and the frequency of unit commitments remained about the same as in the previous period at 38 percent.

For the purpose of displaying trends between reporting periods, through Figure 5 provide data for both the current reporting period and the previous reporting period (*i.e.*, the period from May 16 through July 15. Figure 2 summarizes by general reason the data presented in Attachment A. Most of the reasons for Exceptional Dispatches listed in Figure 3 correspond to reasons listed in Attachment A, except that in Figure 3 “System” includes System Energy on interties and other System Capacity requirements in the ISO Balancing Authority Area, “Market Disruption” includes “HASP Failure,” and all reasons listed in Attachment A but not listed in Figure 3 are grouped as “Other.” Figure 3 provides the total megawatt-hour (MWh) volume of incremental and decremental Exceptional Dispatches by day, broken out by: Unit Commitment to Minimum Load (Pmin), Real-Time incremental dispatch, and Real-Time decremental dispatch. Figure 4 shows the total MWh quantity of Exceptional Dispatch as a percentage of total load, where total load is equal to internal generation plus imports minus exports. Finally, Figure 5 compares the total instances of Exceptional Dispatch per day and the count of unique resources that were exceptionally dispatched per day. To the extent that there is large discrepancy between the two series in Figure 5, it reflects the fact that in Real-Time grid operators are exceptionally dispatching the same unit multiple times to keep it within required operating limits.

Overall, the data on Exceptional Dispatch for the period from June 16 through July 15 shows some improving trends. In addition to the decline in HASP failures and associated Intertie dispatches, the MWh quantities have also declined by 40 percent from the previous reporting period, and this is true in spite of higher average loads in the CAISO Balancing Authority Area. This decline is most pronounced when comparing Exceptional Dispatch MWh volumes to the total area load as seen in Figure 4 where the monthly average percent of Load fell from two percent to one percent.

As discussed in the July 2009 report, the occurrence of Exceptional Dispatches for transmission outages has become increasingly rare as the summer months arrive with higher average loads. However as loads increase

we also see a corresponding increase in the frequency of Exceptional Dispatch for generation and transmission procedures for reliability reasons. As reported in Figure 2, the usage of generation operating procedures increased 60 percent over the previous reporting period, and instances of using transmission operating procedures increased more than four fold, from 56 instances to 244 instances. However, most transmission operating procedures occur in Real-Time and involve relatively small dispatch volumes. So even while the number of Real-Time Exceptional Dispatches using transmission operating procedures has increased markedly, the overall MWh volume of Exceptional Dispatch in Real-Time has declined.

Data gathering for this report continues to involve manual review of individual logs as logging practices are not automated. In addition, the market quality review of the data is on a timeline consistent with the publication of initial settlement statement at T + 38 Business Days. Consequently, the manual log review for this period is not complete. It is possible that additional Exceptional Dispatches occurred during this period, or that some Exceptional Dispatches reported here will be invalidated during quality review. For all Exceptional Dispatches, the ISO has substantially captured the MWh volume through July 4. MWh data for the period after July 4 is less accurate due to the amount of time required to manually transfer intertie Exceptional Dispatch records from dispatcher's logs to downstream databases that are used for this report. The ISO is developing procedures and revising its processes for this information to be captured in a more timely manner in the future to ensure that it is incorporated in this report. The ISO has endeavored to develop a comprehensive report itemizing all Exceptional Dispatches occurring in the period from June 16 to July 15 and believes that it is substantially complete and accurate, except as discussed above.

III. Final Report on Exceptional Dispatches Occurring from April 16 Through May 15, 2009

In the July 2009 Report, the ISO explained that it planned to republish all data for the time period from April 16 through May 15, and to provide cost data for that period, in the August 2009 Report.⁵ Accordingly, Attachment B to the instant report includes updated metrics, including cost data, for the April 16-May 15 time period. However, the ISO believe it has successfully corrected the data issues that merited reissuing Attachment A in the first May 2009 Report. As a result, this is the last time the ISO will reissue the data in Attachment A from a previous report. However, the ISO will continue to republish the associated metrics for the prior reporting period as seen in through Figure 5 below.

Table 1 in Attachment B shows a total of 814 Exceptional Dispatches. It is usually the case that a few Exceptional Dispatches are invalidated after meter

⁵ June 2009 Report at 6.

data is examined during the settlement process, typically due to a lack of performance by a few generators. As a result, the total in Table 1 is slightly lower than the 828 Exceptional Dispatches presented in the June 2009 Report, but the data is otherwise essentially unchanged. Similar to

Figure 1 through Figure 3 discussed above, Figure 6, Figure 7 and Figure 8 in Attachment B show the frequency of Exceptional Dispatch by market and commitment type, the total MWh volume of Exceptional Dispatch by day and the total MWh volume of Exceptional Dispatch as a percent of total load.

Table 2 in Attachment B provides a list of Exceptional Dispatch costs by day, resource, and Charge Code. The relevant Charge Codes for the April 16-May 15 time frame are 6470 (Real-Time Instructed Imbalance Energy Settlement) broken out by incremental or decremental dispatch, 6488 (Exceptional Dispatch Uplift Settlement) and 6482 (Real-Time Excess Cost for Instructed Energy Settlement). In Table 2, positive values reflect payments and negative values reflect charges. For the April 16-May 15 time frame, the total payment for Charge Code 6470 (incremental dispatch) was \$486,222 and net total payment for Charge Code 6470 (decremental dispatch) was \$164,276. The net total payment for Charge Code 6488 was \$165,695 and the net total charge for Charge Code 6482 was \$167. Also for the April 16-May 15 reporting period, there was one instance where an Exceptional Dispatch triggered an Interim Capacity Procurement Methodology (ICPM) payment. For further information about this ICPM designation, see the April Report at <http://www.caiso.com/23b3/23b3e0b1120d0.pdf>. The relevant charge code for ICPM payments is Charge Code 7870 (Monthly Significant Event ICPM Settlement) which totaled \$1,123.29 for the month of April.

Figure 1: Summary of Exceptional Dispatch Frequency by Market Type

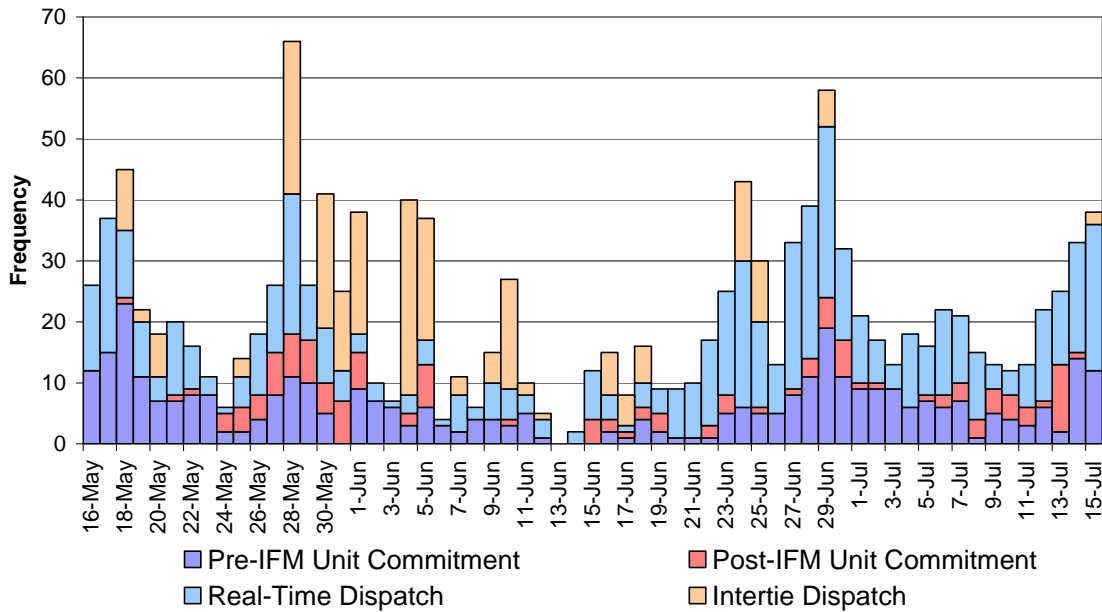


Figure 2: Summary of Exceptional Dispatch Frequency by Reason

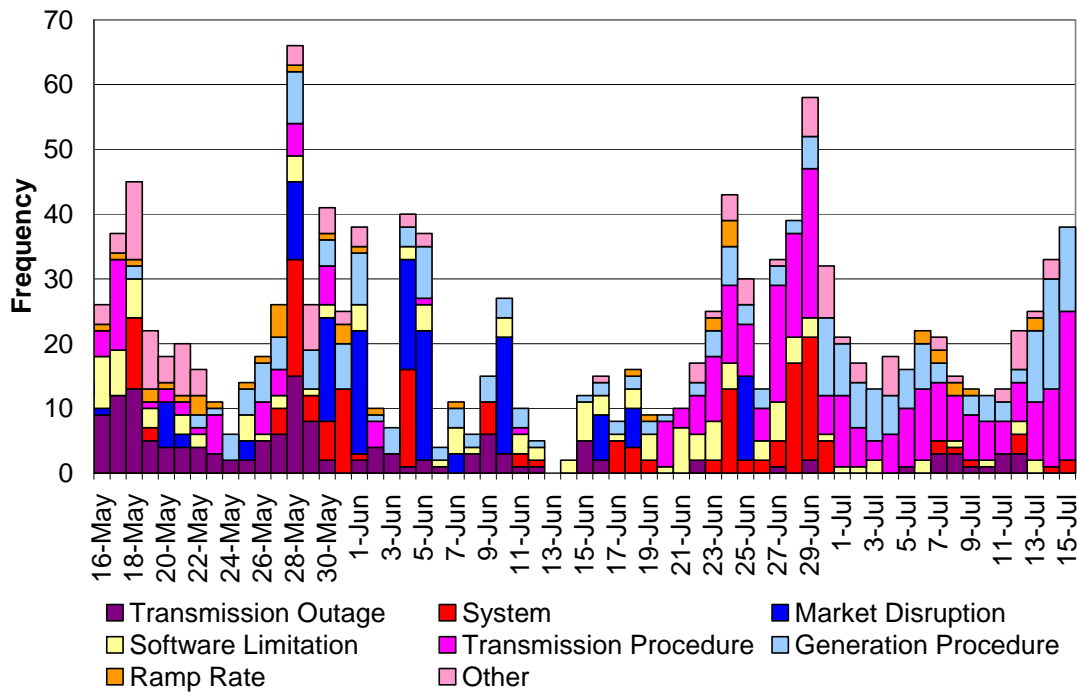


Figure 3: Total Exceptional Dispatch MWh Volume

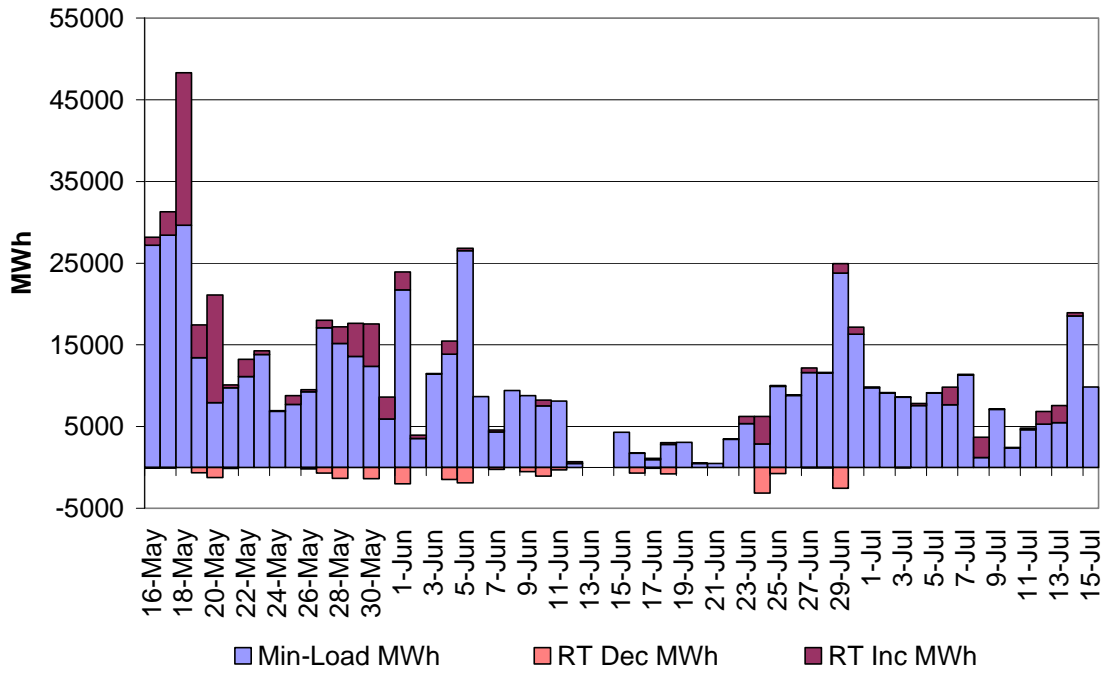


Figure 4: Exceptional Dispatch Percent of Total Load

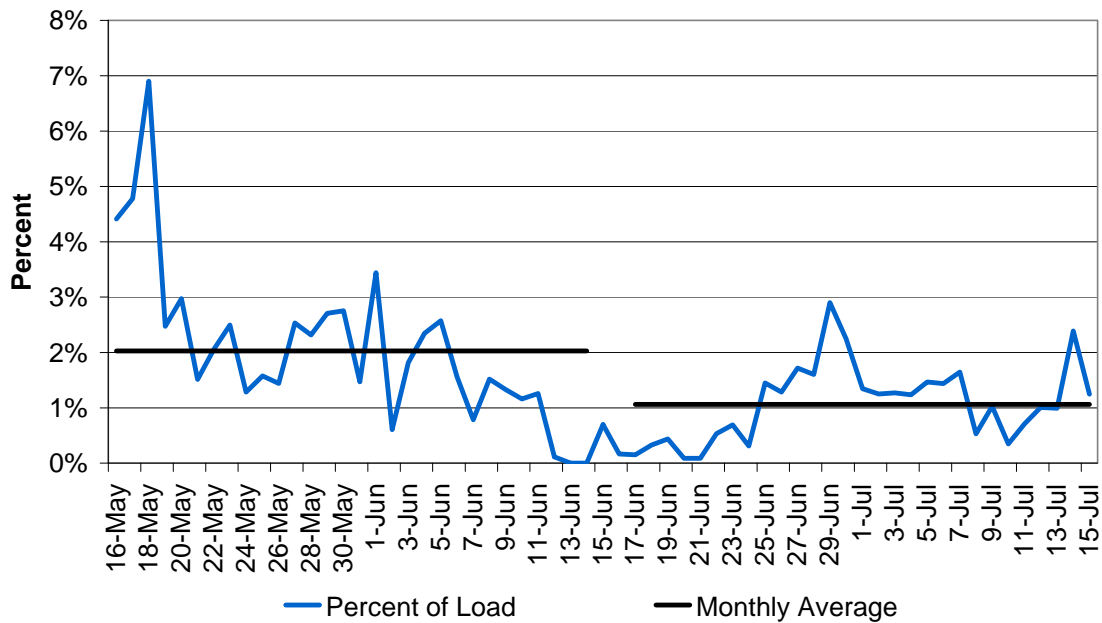
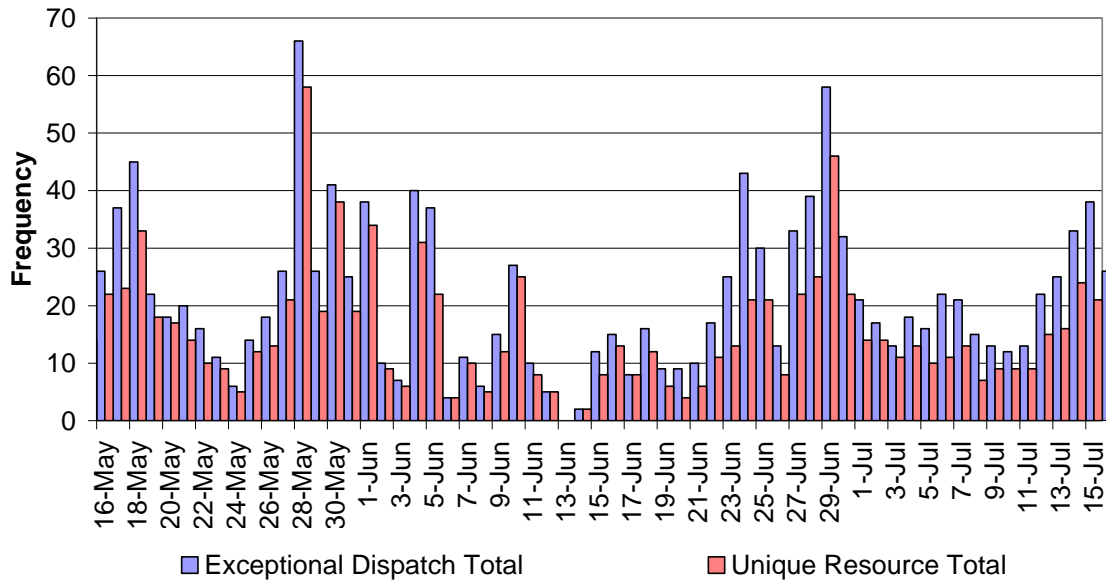


Figure 5: Total Exceptional Dispatch vs. Total Unique Resources



ATTACHMENT A

**California Independent System Operator Corporation
Exception Dispatch Report
August 15, 2009**

Table of Exceptional Dispatches--June 16 through July 15

#	Date	Utility District	LR Area	Market	Reason
1	6/16/2009	Intertie	No LRA	RT	HASP Failure
2	6/16/2009	Intertie	No LRA	RT	HASP Failure
3	6/16/2009	Intertie	No LRA	RT	HASP Failure
4	6/16/2009	Intertie	No LRA	RT	HASP Failure
5	6/16/2009	Intertie	No LRA	RT	HASP Failure
6	6/16/2009	Intertie	No LRA	RT	HASP Failure
7	6/16/2009	Intertie	No LRA	RT	HASP Failure
8	6/16/2009	PGAE	Bay Area	DA	G-233
9	6/16/2009	SCE	LA Basin	DA	Transmission Outage SCE
10	6/16/2009	SCE	LA Basin	RT	G-219
11	6/16/2009	SCE	LA Basin	RT	Transmission Outage SCE
12	6/16/2009	PGAE	No LRA	RT	Software Limitation
13	6/16/2009	PGAE	No LRA	RT	Software Limitation
14	6/16/2009	PGAE	No LRA	RT	Software Limitation
15	6/16/2009	SDGE	No LRA	RT	Unit Testing
16	6/17/2009	SCE	LA Basin	RT	G-219
17	6/17/2009	SCE	LA Basin	DA	G-219
18	6/17/2009	PGAE	Fresno	RT	Software Limitation
19	6/17/2009	Intertie	No LRA	RT	System Energy
20	6/17/2009	Intertie	No LRA	RT	System Energy
21	6/17/2009	Intertie	No LRA	RT	System Energy
22	6/17/2009	Intertie	No LRA	RT	System Energy
23	6/17/2009	Intertie	No LRA	RT	System Energy
24	6/18/2009	SCE	LA Basin	RT	Ramp Rate
25	6/18/2009	SCE	LA Basin	DA	G-219
26	6/18/2009	SCE	LA Basin	DA	G-219
27	6/18/2009	PGAE	Fresno	RT	Software Limitation
28	6/18/2009	PGAE	Fresno	RT	Software Limitation
29	6/18/2009	PGAE	Bay Area	DA	System Capacity
30	6/18/2009	PGAE	Bay Area	RT	System Capacity
31	6/18/2009	Intertie	No LRA	RT	HASP Failure
32	6/18/2009	Intertie	No LRA	RT	HASP Failure
33	6/18/2009	Intertie	No LRA	RT	HASP Failure
34	6/18/2009	Intertie	No LRA	RT	HASP Failure
35	6/18/2009	Intertie	No LRA	RT	HASP Failure
36	6/18/2009	Intertie	No LRA	RT	HASP Failure
37	6/18/2009	PGAE	Fresno	RT	Software Limitation
38	6/18/2009	PGAE	Bay Area	RT	System Capacity
39	6/18/2009	PGAE	Bay Area	DA	System Capacity
40	6/19/2009	PGAE	Bay Area	RT	System Capacity
41	6/19/2009	PGAE	Bay Area	RT	System Capacity

#	Date	Utility District	LR Area	Market	Reason
42	6/19/2009	SCE	LA Basin	RT	Ramp Rate
43	6/19/2009	SCE	LA Basin	DA	G-219
44	6/19/2009	SCE	LA Basin	DA	G-219
45	6/19/2009	PGAE	Fresno	RT	Software Limitation
46	6/19/2009	PGAE	Fresno	RT	Software Limitation
47	6/19/2009	SDGE	San Diego	RT	Software Limitation
48	6/19/2009	SDGE	San Diego	RT	Software Limitation
49	6/20/2009	SCE	LA Basin	DA	G-219
50	6/20/2009	PGAE	Humboldt	RT	T-138
51	6/20/2009	PGAE	Humboldt	RT	T-138
52	6/20/2009	PGAE	Humboldt	RT	T-138
53	6/20/2009	PGAE	Humboldt	RT	T-138
54	6/20/2009	PGAE	Humboldt	RT	T-138
55	6/20/2009	PGAE	Humboldt	RT	T-138
56	6/20/2009	PGAE	Humboldt	RT	T-138
57	6/20/2009	PGAE	Fresno	RT	Software Limitation
58	6/21/2009	PGAE	Humboldt	RT	T-138
59	6/21/2009	SCE	LA Basin	DA	T-103
60	6/21/2009	PGAE	Fresno	RT	Software Limitation
61	6/21/2009	PGAE	Humboldt	RT	Software Limitation
62	6/21/2009	PGAE	Fresno	RT	Software Limitation
63	6/21/2009	PGAE	Fresno	RT	Software Limitation
64	6/21/2009	PGAE	Fresno	RT	Software Limitation
65	6/21/2009	PGAE	Humboldt	RT	T-138
66	6/21/2009	PGAE	Humboldt	RT	Software Limitation
67	6/21/2009	PGAE	Fresno	RT	Software Limitation
68	6/22/2009	SCE	LA Basin	RT	Software Limitation
69	6/22/2009	SCE	LA Basin	RT	Software Limitation
70	6/22/2009	PGAE	No LRA	RT	Over Generation
71	6/22/2009	PGAE	No LRA	RT	Over Generation
72	6/22/2009	PGAE	No LRA	RT	Over Generation
73	6/22/2009	PGAE	Humboldt	RT	T-138
74	6/22/2009	PGAE	Humboldt	RT	Software Limitation
75	6/22/2009	PGAE	Humboldt	RT	T-138
76	6/22/2009	PGAE	Humboldt	RT	T-138
77	6/22/2009	SCE	LA Basin	DA	G-219
78	6/22/2009	PGAE	Humboldt	RT	T-138
79	6/22/2009	PGAE	Humboldt	RT	T-138
80	6/22/2009	PGAE	Humboldt	RT	Software Limitation
81	6/22/2009	PGAE	Humboldt	RT	T-138
82	6/22/2009	PGAE	Sierra	RT	Transmission Outage PGAE
83	6/22/2009	PGAE	Sierra	RT	Transmission Outage PGAE
84	6/22/2009	SCE	LA Basin	RT	G-217
85	6/23/2009	SCE	LA Basin	RT	G-217
86	6/23/2009	PGAE	Fresno	RT	Software Limitation
87	6/23/2009	PGAE	Fresno	RT	Software Limitation
88	6/23/2009	PGAE	Fresno	RT	Software Limitation

#	Date	Utility District	LR Area	Market	Reason
89	6/23/2009	SCE	LA Basin	DA	G-219
90	6/23/2009	SCE	LA Basin	DA	G-217
91	6/23/2009	SCE	LA Basin	DA	System Capacity
92	6/23/2009	PGAE	Humboldt	RT	T-138
93	6/23/2009	PGAE	Humboldt	RT	T-138
94	6/23/2009	PGAE	Humboldt	RT	Software Limitation
95	6/23/2009	PGAE	Humboldt	RT	T-138
96	6/23/2009	PGAE	Humboldt	RT	T-138
97	6/23/2009	PGAE	Humboldt	RT	T-138
98	6/23/2009	SCE	LA Basin	DA	G-219
99	6/23/2009	PGAE	Humboldt	RT	T-138
100	6/23/2009	PGAE	Humboldt	RT	T-138
101	6/23/2009	PGAE	Humboldt	RT	T-138
102	6/23/2009	PGAE	Humboldt	RT	T-138
103	6/23/2009	PGAE	Humboldt	RT	Software Limitation
104	6/23/2009	PGAE	Humboldt	RT	T-138
105	6/23/2009	SCE	LA Basin	RT	Ramp Rate
106	6/23/2009	SCE	LA Basin	RT	Ramp Rate
107	6/23/2009	SCE	LA Basin	DA	Region Reliability
108	6/23/2009	SCE	LA Basin	RT	System Capacity
109	6/23/2009	SDGE	San Diego	RT	Software Limitation
110	6/24/2009	PGAE	Humboldt	RT	T-138
111	6/24/2009	PGAE	Humboldt	RT	T-138
112	6/24/2009	PGAE	Humboldt	RT	T-138
113	6/24/2009	PGAE	Humboldt	RT	Software Limitation
114	6/24/2009	PGAE	Humboldt	RT	T-138
115	6/24/2009	PGAE	Humboldt	RT	T-138
116	6/24/2009	PGAE	Humboldt	RT	T-138
117	6/24/2009	PGAE	Humboldt	RT	Software Limitation
118	6/24/2009	PGAE	Humboldt	RT	Software Limitation
119	6/24/2009	SCE	LA Basin	DA	G-217
120	6/24/2009	SCE	LA Basin	RT	Ramp Rate
121	6/24/2009	Intertie	No LRA	RT	System Energy
122	6/24/2009	Intertie	No LRA	RT	System Energy
123	6/24/2009	Intertie	No LRA	RT	System Energy
124	6/24/2009	Intertie	No LRA	RT	System Energy
125	6/24/2009	Intertie	No LRA	RT	System Energy
126	6/24/2009	Intertie	No LRA	RT	System Energy
127	6/24/2009	Intertie	No LRA	RT	System Energy
128	6/24/2009	SCE	LA Basin	DA	G-219
129	6/24/2009	SCE	LA Basin	RT	Ramp Rate
130	6/24/2009	SCE	LA Basin	DA	G-217
131	6/24/2009	SCE	LA Basin	DA	G-217
132	6/24/2009	SCE	LA Basin	DA	G-217
133	6/24/2009	PGAE	Humboldt	RT	T-138
134	6/24/2009	PGAE	Humboldt	RT	T-138
135	6/24/2009	PGAE	Humboldt	RT	T-138

#	Date	Utility District	LR Area	Market	Reason
136	6/24/2009	Intertie	No LRA	RT	System Energy
137	6/24/2009	Intertie	No LRA	RT	System Energy
138	6/24/2009	Intertie	No LRA	RT	System Energy
139	6/24/2009	Intertie	No LRA	RT	System Energy
140	6/24/2009	Intertie	No LRA	RT	System Energy
141	6/24/2009	Intertie	No LRA	RT	System Energy
142	6/24/2009	PGAE	Humboldt	RT	Software Limitation
143	6/24/2009	PGAE	Humboldt	RT	T-138
144	6/24/2009	PGAE	Humboldt	RT	T-138
145	6/24/2009	PGAE	Humboldt	RT	T-138
146	6/24/2009	SCE	LA Basin	DA	G-219
147	6/24/2009	SCE	LA Basin	RT	Ramp Rate
148	6/24/2009	SCE	No LRA	RT	Unit Testing
149	6/24/2009	SCE	No LRA	RT	Unit Testing
150	6/24/2009	SCE	No LRA	RT	Unit Testing
151	6/24/2009	SCE	No LRA	RT	Unit Testing
152	6/24/2009	SCE	LA Basin	RT	Ramp Rate
153	6/25/2009	SCE	LA Basin	DA	System Capacity
154	6/25/2009	SCE	LA Basin	RT	HASP Failure
155	6/25/2009	SCE	LA Basin	RT	HASP Failure
156	6/25/2009	SDGE	San Diego	RT	HASP Failure
157	6/25/2009	Intertie	No LRA	RT	HASP Failure
158	6/25/2009	Intertie	No LRA	RT	HASP Failure
159	6/25/2009	Intertie	No LRA	RT	HASP Failure
160	6/25/2009	Intertie	No LRA	RT	HASP Failure
161	6/25/2009	Intertie	No LRA	RT	HASP Failure
162	6/25/2009	Intertie	No LRA	RT	HASP Failure
163	6/25/2009	Intertie	No LRA	RT	HASP Failure
164	6/25/2009	Intertie	No LRA	RT	HASP Failure
165	6/25/2009	Intertie	No LRA	RT	HASP Failure
166	6/25/2009	Intertie	No LRA	RT	HASP Failure
167	6/25/2009	PGAE	Humboldt	RT	T-138
168	6/25/2009	PGAE	Humboldt	RT	T-138
169	6/25/2009	PGAE	Humboldt	RT	T-138
170	6/25/2009	PGAE	Humboldt	RT	T-138
171	6/25/2009	PGAE	Humboldt	RT	T-138
172	6/25/2009	PGAE	Humboldt	RT	T-138
173	6/25/2009	PGAE	Humboldt	RT	T-138
174	6/25/2009	PGAE	Humboldt	RT	T-138
175	6/25/2009	SCE	LA Basin	DA	System Capacity
176	6/25/2009	SCE	LA Basin	DA	G-219
177	6/25/2009	SCE	LA Basin	DA	G-219
178	6/25/2009	SDGE	San Diego	DA	G-206
179	6/25/2009	PGAE	Sierra	RT	Unit Testing
180	6/25/2009	PGAE	Sierra	RT	Unit Testing
181	6/25/2009	PGAE	Sierra	RT	Unit Testing
182	6/25/2009	PGAE	Sierra	RT	Unit Testing

#	Date	Utility District	LR Area	Market	Reason
183	6/26/2009	SCE	LA Basin	DA	System Capacity
184	6/26/2009	SCE	LA Basin	DA	G-219
185	6/26/2009	SCE	LA Basin	DA	System Capacity
186	6/26/2009	SCE	LA Basin	DA	G-219
187	6/26/2009	PGAE	Fresno	RT	Software Limitation
188	6/26/2009	SDGE	San Diego	DA	G-206
189	6/26/2009	PGAE	Humboldt	RT	Software Limitation
190	6/26/2009	PGAE	Humboldt	RT	T-138
191	6/26/2009	PGAE	Humboldt	RT	T-138
192	6/26/2009	PGAE	Humboldt	RT	T-138
193	6/26/2009	PGAE	Humboldt	RT	T-138
194	6/26/2009	PGAE	Humboldt	RT	T-138
195	6/26/2009	PGAE	Humboldt	RT	Software Limitation
196	6/27/2009	SCE	LA Basin	DA	System Capacity
197	6/27/2009	SCE	LA Basin	DA	System Capacity
198	6/27/2009	SCE	LA Basin	DA	G-219
199	6/27/2009	SCE	LA Basin	DA	G-219
200	6/27/2009	PGAE	Humboldt	RT	T-138
201	6/27/2009	PGAE	Humboldt	RT	T-138
202	6/27/2009	PGAE	Humboldt	RT	T-138
203	6/27/2009	PGAE	Fresno	RT	Software Limitation
204	6/27/2009	PGAE	Humboldt	RT	T-138
205	6/27/2009	PGAE	Humboldt	RT	T-138
206	6/27/2009	PGAE	Humboldt	RT	T-138
207	6/27/2009	PGAE	Humboldt	RT	T-138
208	6/27/2009	PGAE	Humboldt	RT	T-138
209	6/27/2009	SCE	BC/Ventura	DA	Transmission Outage SCE
210	6/27/2009	SDGE	San Diego	DA	G-206
211	6/27/2009	PGAE	Bay Area	DA	System Capacity
212	6/27/2009	SDGE	San Diego	RT	Software Limitation
213	6/27/2009	SDGE	San Diego	RT	Software Limitation
214	6/27/2009	SDGE	San Diego	RT	Software Limitation
215	6/27/2009	SDGE	No LRA	RT	T-132
216	6/27/2009	PGAE	No LRA	DA	System Capacity
217	6/27/2009	SDGE	No LRA	RT	T-132
218	6/27/2009	PGAE	Humboldt	RT	T-138
219	6/27/2009	PGAE	Humboldt	RT	Software Limitation
220	6/27/2009	PGAE	Humboldt	RT	T-138
221	6/27/2009	PGAE	Humboldt	RT	T-138
222	6/27/2009	PGAE	No LRA	RT	Region Reliability
223	6/27/2009	PGAE	Bay Area	RT	T-133
224	6/27/2009	PGAE	Sierra	RT	T-165
225	6/27/2009	PGAE	Sierra	RT	T-165
226	6/27/2009	PGAE	Sierra	RT	T-165
227	6/27/2009	PGAE	Bay Area	RT	T-133
228	6/27/2009	SDGE	San Diego	RT	Software Limitation
229	6/28/2009	PGAE	Humboldt	RT	T-138

#	Date	Utility District	LR Area	Market	Reason
230	6/28/2009	PGAE	Humboldt	RT	T-138
231	6/28/2009	PGAE	No LRA	DA	System Capacity
232	6/28/2009	PGAE	Bay Area	DA	System Capacity
233	6/28/2009	SCE	LA Basin	DA	System Capacity
234	6/28/2009	SCE	LA Basin	DA	G-219
235	6/28/2009	SCE	LA Basin	DA	System Capacity
236	6/28/2009	SCE	LA Basin	DA	G-219
237	6/28/2009	PGAE	Fresno	RT	Software Limitation
238	6/28/2009	PGAE	Fresno	RT	System Capacity
239	6/28/2009	PGAE	Bay Area	RT	System Capacity
240	6/28/2009	SCE	LA Basin	DA	System Capacity
241	6/28/2009	PGAE	Fresno	RT	System Capacity
242	6/28/2009	PGAE	Fresno	RT	System Capacity
243	6/28/2009	PGAE	Fresno	RT	System Capacity
244	6/28/2009	PGAE	Bay Area	DA	System Capacity
245	6/28/2009	PGAE	No LRA	DA	System Capacity
246	6/28/2009	SCE	LA Basin	DA	System Capacity
247	6/28/2009	SDGE	No LRA	RT	T-132
248	6/28/2009	SDGE	No LRA	RT	T-132
249	6/28/2009	SDGE	No LRA	RT	T-132
250	6/28/2009	PGAE	Bay Area	RT	System Capacity
251	6/28/2009	PGAE	Bay Area	DA	System Capacity
252	6/28/2009	SCE	LA Basin	RT	System Capacity
253	6/28/2009	PGAE	Sierra	RT	T-165
254	6/28/2009	PGAE	Sierra	RT	T-165
255	6/28/2009	PGAE	Sierra	RT	T-165
256	6/28/2009	PGAE	Sierra	RT	T-165
257	6/28/2009	PGAE	Sierra	RT	T-165
258	6/28/2009	PGAE	Sierra	RT	T-165
259	6/28/2009	PGAE	Sierra	RT	T-165
260	6/28/2009	PGAE	Humboldt	RT	Software Limitation
261	6/28/2009	PGAE	Humboldt	RT	T-138
262	6/28/2009	PGAE	Humboldt	RT	T-138
263	6/28/2009	PGAE	Humboldt	RT	T-138
264	6/28/2009	SDGE	San Diego	RT	System Capacity
265	6/28/2009	PGAE	Humboldt	RT	Software Limitation
266	6/28/2009	PGAE	Humboldt	RT	T-138
267	6/28/2009	SDGE	San Diego	RT	Software Limitation
268	6/29/2009	PGAE	Humboldt	RT	T-138
269	6/29/2009	PGAE	Humboldt	RT	T-138
270	6/29/2009	SDGE	San Diego	DA	SP26 Capacity
271	6/29/2009	SCE	LA Basin	DA	System Capacity
272	6/29/2009	Intertie	No LRA	RT	System Energy
273	6/29/2009	SCE	LA Basin	RT	Over Generation
274	6/29/2009	SCE	LA Basin	RT	Over Generation
275	6/29/2009	PGAE	No LRA	RT	Over Generation
276	6/29/2009	Intertie	No LRA	RT	System Energy

#	Date	Utility District	LR Area	Market	Reason
277	6/29/2009	Intertie	No LRA	RT	System Energy
278	6/29/2009	Intertie	No LRA	RT	System Energy
279	6/29/2009	Intertie	No LRA	RT	System Energy
280	6/29/2009	Intertie	No LRA	RT	System Energy
281	6/29/2009	SCE	LA Basin	DA	System Capacity
282	6/29/2009	SCE	LA Basin	DA	System Capacity
283	6/29/2009	SCE	LA Basin	RT	Software Limitation
284	6/29/2009	SCE	LA Basin	RT	System Capacity
285	6/29/2009	SCE	LA Basin	DA	System Capacity
286	6/29/2009	PGAE	No LRA	DA	System Capacity
287	6/29/2009	SCE	LA Basin	DA	System Capacity
288	6/29/2009	SCE	BC/Ventura	RT	System Capacity
289	6/29/2009	PGAE	Bay Area	DA	System Capacity
290	6/29/2009	PGAE	No LRA	DA	System Capacity
291	6/29/2009	PGAE	No LRA	DA	System Capacity
292	6/29/2009	PGAE	Bay Area	DA	System Capacity
293	6/29/2009	PGAE	Bay Area	DA	System Capacity
294	6/29/2009	SCE	LA Basin	DA	Transmission Outage SCE
295	6/29/2009	SCE	LA Basin	DA	Transmission Outage SCE
296	6/29/2009	SCE	LA Basin	DA	G-217
297	6/29/2009	SCE	LA Basin	DA	G-217
298	6/29/2009	SCE	LA Basin	DA	G-217
299	6/29/2009	SCE	LA Basin	DA	G-219
300	6/29/2009	SDGE	San Diego	DA	G-206
301	6/29/2009	SDGE	No LRA	RT	T-132
302	6/29/2009	SDGE	No LRA	RT	T-132
303	6/29/2009	SCE	LA Basin	RT	Region Reliability
304	6/29/2009	SDGE	No LRA	RT	T-132
305	6/29/2009	SDGE	No LRA	RT	T-132
306	6/29/2009	SDGE	No LRA	RT	T-132
307	6/29/2009	PGAE	Sierra	RT	T-154
308	6/29/2009	PGAE	Sierra	RT	T-154
309	6/29/2009	SDGE	No LRA	RT	Software Limitation
310	6/29/2009	PGAE	Sierra	RT	T-165
311	6/29/2009	SDGE	San Diego	RT	Software Limitation
312	6/29/2009	PGAE	Humboldt	RT	T-138
313	6/29/2009	PGAE	Humboldt	RT	T-138
314	6/29/2009	PGAE	Humboldt	RT	T-138
315	6/29/2009	PGAE	Humboldt	RT	T-138
316	6/29/2009	PGAE	Humboldt	RT	T-138
317	6/29/2009	PGAE	Humboldt	RT	T-138
318	6/29/2009	PGAE	Fresno	RT	T-129
319	6/29/2009	PGAE	Fresno	RT	T-129
320	6/29/2009	PGAE	Fresno	RT	T-129
321	6/29/2009	PGAE	Fresno	RT	T-129
322	6/29/2009	PGAE	Fresno	RT	T-129
323	6/29/2009	PGAE	Fresno	RT	T-129

#	Date	Utility District	LR Area	Market	Reason
324	6/29/2009	PGAE	Fresno	RT	T-129
325	6/29/2009	PGAE	No LRA	RT	Unit Testing
326	6/30/2009	PGAE	Humboldt	RT	T-138
327	6/30/2009	PGAE	Bay Area	RT	System Capacity
328	6/30/2009	PGAE	Bay Area	RT	System Capacity
329	6/30/2009	SCE	LA Basin	RT	System Capacity
330	6/30/2009	SCE	LA Basin	DA	G-217
331	6/30/2009	SDGE	San Diego	DA	G-206
332	6/30/2009	SDGE	San Diego	DA	G-206
333	6/30/2009	PGAE	Humboldt	RT	T-138
334	6/30/2009	SCE	LA Basin	DA	G-217
335	6/30/2009	SCE	LA Basin	DA	G-217
336	6/30/2009	SCE	LA Basin	DA	G-217
337	6/30/2009	SCE	LA Basin	DA	G-217
338	6/30/2009	SCE	LA Basin	DA	G-217
339	6/30/2009	SCE	LA Basin	DA	G-219
340	6/30/2009	SCE	LA Basin	DA	G-219
341	6/30/2009	SCE	LA Basin	DA	G-219
342	6/30/2009	SCE	LA Basin	RT	System Capacity
343	6/30/2009	PGAE	Bay Area	RT	System Capacity
344	6/30/2009	SCE	LA Basin	RT	G-217
345	6/30/2009	PGAE	Fresno	RT	Software Limitation
346	6/30/2009	RVSD	LA Basin	RT	Unit Testing
347	6/30/2009	RVSD	LA Basin	RT	Unit Testing
348	6/30/2009	RVSD	LA Basin	RT	Unit Testing
349	6/30/2009	SDGE	San Diego	RT	Model Issue
350	6/30/2009	SDGE	San Diego	RT	T-132
351	6/30/2009	SDGE	San Diego	RT	Model Issue
352	6/30/2009	RVSD	LA Basin	RT	Unit Testing
353	6/30/2009	RVSD	LA Basin	RT	Unit Testing
354	6/30/2009	RVSD	LA Basin	RT	Unit Testing
355	6/30/2009	PGAE	Humboldt	RT	T-138
356	6/30/2009	PGAE	Humboldt	RT	T-138
357	6/30/2009	PGAE	Humboldt	RT	T-138
358	7/1/2009	PGAE	Humboldt	RT	T-138
359	7/1/2009	PGAE	Humboldt	RT	T-138
360	7/1/2009	PGAE	Bay Area	RT	Software Limitation
361	7/1/2009	SCE	LA Basin	DA	Region Reliability
362	7/1/2009	SCE	LA Basin	DA	G-217
363	7/1/2009	SCE	LA Basin	DA	G-217
364	7/1/2009	SCE	LA Basin	DA	G-219
365	7/1/2009	SCE	LA Basin	DA	G-219
366	7/1/2009	SCE	LA Basin	DA	G-219
367	7/1/2009	SDGE	San Diego	DA	G-206
368	7/1/2009	SDGE	San Diego	DA	G-206
369	7/1/2009	PGAE	Humboldt	RT	T-138
370	7/1/2009	PGAE	Humboldt	RT	T-138

#	Date	Utility District	LR Area	Market	Reason
371	7/1/2009	PGAE	Humboldt	RT	T-138
372	7/1/2009	SCE	LA Basin	DA	G-217
373	7/1/2009	PGAE	Humboldt	RT	T-138
374	7/1/2009	PGAE	Humboldt	RT	T-138
375	7/1/2009	PGAE	Humboldt	RT	T-138
376	7/1/2009	PGAE	Humboldt	RT	T-138
377	7/1/2009	PGAE	Humboldt	RT	T-138
378	7/1/2009	PGAE	Fresno	RT	T-129
379	7/2/2009	PGAE	Fresno	RT	T-129
380	7/2/2009	PGAE	Humboldt	RT	T-138
381	7/2/2009	SDGE	San Diego	DA	T-132
382	7/2/2009	SCE	LA Basin	DA	Region Reliability
383	7/2/2009	SCE	LA Basin	DA	G-217
384	7/2/2009	SCE	LA Basin	DA	G-217
385	7/2/2009	SCE	LA Basin	DA	G-219
386	7/2/2009	SCE	LA Basin	DA	G-219
387	7/2/2009	SCE	LA Basin	DA	G-219
388	7/2/2009	SDGE	San Diego	DA	G-206
389	7/2/2009	PGAE	Fresno	RT	Software Limitation
390	7/2/2009	SCE	LA Basin	DA	G-217
391	7/2/2009	PGAE	Humboldt	RT	Model Issue
392	7/2/2009	PGAE	Humboldt	RT	Model Issue
393	7/2/2009	PGAE	Humboldt	RT	T-138
394	7/2/2009	PGAE	Humboldt	RT	T-138
395	7/2/2009	PGAE	Humboldt	RT	T-138
396	7/3/2009	PGAE	Humboldt	RT	T-138
397	7/3/2009	SCE	LA Basin	DA	G-219
398	7/3/2009	SCE	LA Basin	DA	G-219
399	7/3/2009	SCE	LA Basin	DA	G-217
400	7/3/2009	SCE	LA Basin	DA	G-217
401	7/3/2009	SCE	LA Basin	DA	G-217
402	7/3/2009	SCE	LA Basin	DA	G-217
403	7/3/2009	SDGE	San Diego	RT	Software Limitation
404	7/3/2009	SCE	LA Basin	DA	G-217
405	7/3/2009	SDGE	San Diego	DA	G-206
406	7/3/2009	PGAE	Humboldt	RT	T-138
407	7/3/2009	PGAE	Humboldt	RT	T-138
408	7/3/2009	SCE	LA Basin	DA	Software Limitation
409	7/4/2009	SCE	LA Basin	DA	G-217
410	7/4/2009	SCE	LA Basin	DA	G-217
411	7/4/2009	SCE	LA Basin	DA	G-219
412	7/4/2009	SCE	LA Basin	DA	G-219
413	7/4/2009	SDGE	San Diego	DA	G-206
414	7/4/2009	PGAE	Humboldt	RT	T-138
415	7/4/2009	PGAE	Fresno	RT	Model Issue
416	7/4/2009	PGAE	Fresno	RT	Model Issue
417	7/4/2009	PGAE	Fresno	RT	Model Issue

#	Date	Utility District	LR Area	Market	Reason
418	7/4/2009	PGAE	Fresno	RT	Model Issue
419	7/4/2009	PGAE	Fresno	RT	Model Issue
420	7/4/2009	PGAE	Fresno	RT	Model Issue
421	7/4/2009	SCE	LA Basin	DA	G-217
422	7/4/2009	PGAE	Fresno	RT	T-129
423	7/4/2009	PGAE	Fresno	RT	T-129
424	7/4/2009	PGAE	Fresno	RT	T-129
425	7/4/2009	PGAE	Fresno	RT	T-129
426	7/4/2009	PGAE	Humboldt	RT	T-138
427	7/5/2009	PGAE	Humboldt	RT	T-138
428	7/5/2009	SCE	LA Basin	DA	G-217
429	7/5/2009	SDGE	San Diego	DA	G-206
430	7/5/2009	SCE	LA Basin	DA	G-217
431	7/5/2009	SCE	LA Basin	DA	G-219
432	7/5/2009	SCE	LA Basin	DA	G-219
433	7/5/2009	PGAE	Fresno	RT	T-129
434	7/5/2009	SCE	LA Basin	DA	Transmission Outage SCE
435	7/5/2009	SCE	LA Basin	DA	G-217
436	7/5/2009	PGAE	Humboldt	RT	T-138
437	7/5/2009	PGAE	Humboldt	RT	T-138
438	7/5/2009	PGAE	Humboldt	RT	T-138
439	7/5/2009	PGAE	Humboldt	RT	T-138
440	7/5/2009	PGAE	Humboldt	RT	T-138
441	7/5/2009	PGAE	Humboldt	RT	T-138
442	7/5/2009	PGAE	Humboldt	RT	T-138
443	7/6/2009	SCE	LA Basin	DA	G-217
444	7/6/2009	SCE	LA Basin	DA	G-217
445	7/6/2009	SCE	LA Basin	DA	G-219
446	7/6/2009	SCE	LA Basin	DA	G-219
447	7/6/2009	SCE	LA Basin	RT	Ramp Rate
448	7/6/2009	SDGE	San Diego	DA	G-206
449	7/6/2009	PGAE	Humboldt	RT	T-138
450	7/6/2009	PGAE	Humboldt	RT	T-138
451	7/6/2009	PGAE	Humboldt	RT	T-138
452	7/6/2009	SCE	LA Basin	RT	G-217
453	7/6/2009	PGAE	Fresno	RT	Software Limitation
454	7/6/2009	PGAE	Humboldt	RT	T-138
455	7/6/2009	SCE	LA Basin	RT	Ramp Rate
456	7/6/2009	SCE	LA Basin	DA	G-217
457	7/6/2009	PGAE	Humboldt	RT	T-138
458	7/6/2009	PGAE	No LRA	RT	Software Limitation
459	7/6/2009	PGAE	Humboldt	RT	T-138
460	7/6/2009	PGAE	Humboldt	RT	T-138
461	7/6/2009	PGAE	Humboldt	RT	T-138
462	7/6/2009	PGAE	Humboldt	RT	T-138
463	7/6/2009	PGAE	Humboldt	RT	T-138
464	7/6/2009	PGAE	Humboldt	RT	T-138

#	Date	Utility District	LR Area	Market	Reason
465	7/7/2009	SCE	LA Basin	RT	System Capacity
466	7/7/2009	SCE	LA Basin	DA	System Capacity
467	7/7/2009	SCE	LA Basin	RT	Ramp Rate
468	7/7/2009	SCE	LA Basin	RT	SP26 Capacity
469	7/7/2009	PGAE	Bay Area	DA	Transmission Outage PGAE
470	7/7/2009	SCE	LA Basin	DA	Transmission Outage SCE
471	7/7/2009	SCE	LA Basin	DA	Transmission Outage SCE
472	7/7/2009	SCE	LA Basin	DA	G-217
473	7/7/2009	SDGE	San Diego	DA	G-206
474	7/7/2009	PGAE	Humboldt	RT	T-138
475	7/7/2009	PGAE	Humboldt	RT	T-138
476	7/7/2009	PGAE	Humboldt	RT	T-138
477	7/7/2009	PGAE	Humboldt	RT	T-138
478	7/7/2009	SCE	LA Basin	RT	Ramp Rate
479	7/7/2009	SCE	LA Basin	DA	G-217
480	7/7/2009	PGAE	Humboldt	RT	T-138
481	7/7/2009	SCE	No LRA	RT	Region Reliability
482	7/7/2009	PGAE	Humboldt	RT	T-138
483	7/7/2009	PGAE	Humboldt	RT	T-138
484	7/7/2009	PGAE	Humboldt	RT	T-138
485	7/7/2009	PGAE	Humboldt	RT	T-138
486	7/8/2009	SCE	LA Basin	RT	System Capacity
487	7/8/2009	SCE	LA Basin	RT	Ramp Rate
488	7/8/2009	SCE	LA Basin	DA	Transmission Outage SCE
489	7/8/2009	SCE	BC/Ventura	RT	Transmission Outage SCE
490	7/8/2009	SCE	BC/Ventura	RT	Transmission Outage SCE
491	7/8/2009	PGAE	Fresno	RT	Software Limitation
492	7/8/2009	SCE	LA Basin	RT	Ramp Rate
493	7/8/2009	PGAE	Humboldt	RT	T-138
494	7/8/2009	PGAE	Humboldt	RT	T-138
495	7/8/2009	PGAE	Humboldt	RT	T-138
496	7/8/2009	PGAE	Humboldt	RT	T-138
497	7/8/2009	PGAE	Humboldt	RT	T-138
498	7/8/2009	PGAE	Humboldt	RT	T-138
499	7/8/2009	PGAE	Humboldt	RT	T-138
500	7/8/2009	PGAE	Bay Area	RT	Model Issue
501	7/9/2009	SCE	LA Basin	RT	System Capacity
502	7/9/2009	SCE	LA Basin	DA	G-219
503	7/9/2009	SCE	LA Basin	DA	G-217
504	7/9/2009	SDGE	San Diego	DA	G-206
505	7/9/2009	SCE	BC/Ventura	DA	Transmission Outage SCE
506	7/9/2009	PGAE	Humboldt	RT	T-138
507	7/9/2009	PGAE	Humboldt	RT	T-138
508	7/9/2009	SCE	LA Basin	DA	Ramp Rate
509	7/9/2009	PGAE	Humboldt	RT	T-138
510	7/9/2009	PGAE	Humboldt	RT	T-138
511	7/9/2009	PGAE	Humboldt	RT	T-138

#	Date	Utility District	LR Area	Market	Reason
512	7/9/2009	PGAE	Humboldt	RT	T-138
513	7/9/2009	PGAE	Humboldt	RT	T-138
514	7/10/2009	SCE	LA Basin	DA	G-219
515	7/10/2009	SCE	LA Basin	DA	G-217
516	7/10/2009	SCE	LA Basin	DA	G-217
517	7/10/2009	SCE	BC/Ventura	DA	Transmission Outage SCE
518	7/10/2009	PGAE	Humboldt	RT	T-138
519	7/10/2009	PGAE	Humboldt	RT	T-138
520	7/10/2009	PGAE	Humboldt	RT	T-138
521	7/10/2009	PGAE	Humboldt	RT	T-138
522	7/10/2009	PGAE	Humboldt	RT	T-138
523	7/10/2009	PGAE	Humboldt	RT	T-138
524	7/10/2009	SCE	LA Basin	RT	G-219
525	7/10/2009	SDGE	San Diego	RT	Software Limitation
526	7/11/2009	SCE	BC/Ventura	DA	Transmission Outage SCE
527	7/11/2009	SCE	LA Basin	DA	G-219
528	7/11/2009	SCE	LA Basin	DA	G-219
529	7/11/2009	PGAE	Humboldt	RT	T-138
530	7/11/2009	PGAE	Humboldt	RT	T-138
531	7/11/2009	SDGE	San Diego	RT	G-206
532	7/11/2009	PGAE	Humboldt	RT	T-138
533	7/11/2009	PGAE	Humboldt	RT	T-138
534	7/11/2009	PGAE	Humboldt	RT	T-138
535	7/11/2009	PGAE	Bay Area	RT	Region Reliability
536	7/11/2009	PGAE	Bay Area	RT	Transmission Outage PGAE
537	7/11/2009	PGAE	No LRA	RT	Transmission Outage PGAE
538	7/11/2009	PGAE	No LRA	RT	Region Reliability
539	7/12/2009	SCE	LA Basin	RT	Software Limitation
540	7/12/2009	PGAE	Humboldt	RT	T-138
541	7/12/2009	PGAE	Humboldt	RT	T-138
542	7/12/2009	PGAE	Humboldt	RT	T-138
543	7/12/2009	SCE	BC/Ventura	RT	SP26 Capacity
544	7/12/2009	SCE	BC/Ventura	DA	Transmission Outage SCE
545	7/12/2009	SCE	LA Basin	DA	G-219
546	7/12/2009	SCE	LA Basin	DA	G-219
547	7/12/2009	PGAE	Fresno	RT	Region Reliability
548	7/12/2009	PGAE	Bay Area	RT	Region Reliability
549	7/12/2009	PGAE	Bay Area	RT	Region Reliability
550	7/12/2009	SCE	LA Basin	DA	System Capacity
551	7/12/2009	SCE	LA Basin	DA	System Capacity
552	7/12/2009	SCE	LA Basin	DA	System Capacity
553	7/12/2009	PGAE	Humboldt	RT	T-138
554	7/12/2009	PGAE	Humboldt	RT	T-138
555	7/12/2009	PGAE	Humboldt	RT	T-138
556	7/12/2009	PGAE	Bay Area	RT	Software Limitation
557	7/12/2009	PGAE	Bay Area	RT	Region Reliability
558	7/12/2009	PGAE	Bay Area	RT	Transmission Outage PGAE

#	Date	Utility District	LR Area	Market	Reason
559	7/12/2009	PGAE	No LRA	RT	Region Reliability
560	7/12/2009	PGAE	No LRA	RT	Transmission Outage PGAE
561	7/13/2009	SCE	LA Basin	DA	G-219
562	7/13/2009	SCE	LA Basin	DA	G-219
563	7/13/2009	PGAE	Humboldt	RT	T-138
564	7/13/2009	PGAE	Humboldt	RT	T-138
565	7/13/2009	PGAE	Humboldt	RT	T-138
566	7/13/2009	PGAE	Humboldt	RT	T-138
567	7/13/2009	PGAE	Humboldt	RT	T-138
568	7/13/2009	SCE	LA Basin	RT	G-217
569	7/13/2009	SDGE	San Diego	RT	Ramp Rate
570	7/13/2009	SDGE	San Diego	RT	G-217
571	7/13/2009	SCE	LA Basin	RT	G-217
572	7/13/2009	SDGE	San Diego	RT	Software Limitation
573	7/13/2009	SDGE	San Diego	RT	Software Limitation
574	7/13/2009	SCE	LA Basin	RT	G-217
575	7/13/2009	PGAE	Humboldt	RT	T-138
576	7/13/2009	PGAE	Humboldt	RT	T-138
577	7/13/2009	PGAE	Humboldt	RT	T-138
578	7/13/2009	PGAE	Humboldt	RT	T-138
579	7/13/2009	SDGE	San Diego	RT	G-217
580	7/13/2009	SDGE	San Diego	RT	Ramp Rate
581	7/13/2009	SCE	LA Basin	RT	G-217
582	7/13/2009	SCE	LA Basin	RT	G-217
583	7/13/2009	SCE	BC/Ventura	RT	Region Reliability
584	7/13/2009	SCE	LA Basin	RT	G-217
585	7/13/2009	SCE	LA Basin	RT	G-217
586	7/14/2009	SCE	LA Basin	DA	System Capacity
587	7/14/2009	SCE	LA Basin	DA	G-217
588	7/14/2009	SCE	LA Basin	DA	G-219
589	7/14/2009	PGAE	Humboldt	RT	T-138
590	7/14/2009	SCE	LA Basin	DA	G-219
591	7/14/2009	SCE	LA Basin	DA	G-219
592	7/14/2009	SCE	LA Basin	DA	G-217
593	7/14/2009	SCE	LA Basin	DA	G-217
594	7/14/2009	SCE	LA Basin	DA	G-217
595	7/14/2009	SDGE	San Diego	DA	G-206
596	7/14/2009	SDGE	San Diego	DA	G-206
597	7/14/2009	SDGE	San Diego	DA	G-206
598	7/14/2009	SCE	LA Basin	DA	G-217
599	7/14/2009	SCE	LA Basin	DA	G-219
600	7/14/2009	SCE	LA Basin	DA	G-219
601	7/14/2009	PGAE	Fresno	RT	T-129
602	7/14/2009	PGAE	Fresno	RT	T-129
603	7/14/2009	PGAE	Humboldt	RT	T-138
604	7/14/2009	PGAE	Humboldt	RT	T-138
605	7/14/2009	PGAE	Humboldt	RT	T-138

#	Date	Utility District	LR Area	Market	Reason
606	7/14/2009	PGAE	Humboldt	RT	T-138
607	7/14/2009	PGAE	Humboldt	RT	T-138
608	7/14/2009	PGAE	Humboldt	RT	T-138
609	7/14/2009	PGAE	No LRA	RT	Unit Testing
610	7/14/2009	PGAE	No LRA	RT	Unit Testing
611	7/14/2009	SCE	LA Basin	RT	G-217
612	7/14/2009	SDGE	San Diego	RT	G-206
613	7/14/2009	SDGE	San Diego	RT	G-206
614	7/14/2009	SDGE	No LRA	RT	Unit Testing
615	7/14/2009	PGAE	Fresno	RT	T-129
616	7/14/2009	PGAE	Bay Area	RT	G-233
617	7/14/2009	PGAE	Humboldt	RT	T-138
618	7/14/2009	PGAE	Humboldt	RT	T-138
619	7/15/2009	PGAE	Humboldt	RT	T-138
620	7/15/2009	PGAE	Humboldt	RT	T-138
621	7/15/2009	PGAE	Humboldt	RT	T-138
622	7/15/2009	PGAE	Humboldt	RT	T-138
623	7/15/2009	PGAE	Humboldt	RT	T-138
624	7/15/2009	SCE	LA Basin	DA	G-219
625	7/15/2009	SCE	LA Basin	DA	G-219
626	7/15/2009	SCE	LA Basin	DA	G-217
627	7/15/2009	SCE	LA Basin	DA	G-217
628	7/15/2009	SCE	LA Basin	DA	G-217
629	7/15/2009	SDGE	San Diego	DA	G-206
630	7/15/2009	SDGE	San Diego	DA	G-206
631	7/15/2009	SDGE	San Diego	DA	G-206
632	7/15/2009	SCE	LA Basin	DA	G-217
633	7/15/2009	SCE	LA Basin	DA	G-217
634	7/15/2009	SCE	LA Basin	DA	G-217
635	7/15/2009	SCE	LA Basin	DA	G-219
636	7/15/2009	Intertie	No LRA	RT	System Energy
637	7/15/2009	Intertie	No LRA	RT	System Energy
638	7/15/2009	PGAE	Humboldt	RT	T-138
639	7/15/2009	PGAE	Humboldt	RT	T-138
640	7/15/2009	SDGE	San Diego	RT	G-206
641	7/15/2009	PGAE	Humboldt	RT	T-138
642	7/15/2009	PGAE	Humboldt	RT	T-138
643	7/15/2009	PGAE	Humboldt	RT	T-138
644	7/15/2009	PGAE	Humboldt	RT	T-138
645	7/15/2009	PGAE	Stockton	RT	T-167
646	7/15/2009	PGAE	Stockton	RT	T-167
647	7/15/2009	PGAE	Stockton	RT	T-167
648	7/15/2009	PGAE	Stockton	RT	T-167
649	7/15/2009	PGAE	Stockton	RT	T-167
650	7/15/2009	PGAE	Stockton	RT	T-167
651	7/15/2009	PGAE	Stockton	RT	T-167
652	7/15/2009	PGAE	Stockton	RT	T-167

#	Date	Utility District	LR Area	Market	Reason
653	7/15/2009	PGAE	Fresno	RT	T-129
654	7/15/2009	PGAE	Fresno	RT	T-129
655	7/15/2009	PGAE	Fresno	RT	T-129
656	7/15/2009	PGAE	Fresno	RT	T-129

ATTACHMENT B

Figure 6: Summary of Exceptional Dispatch Frequency

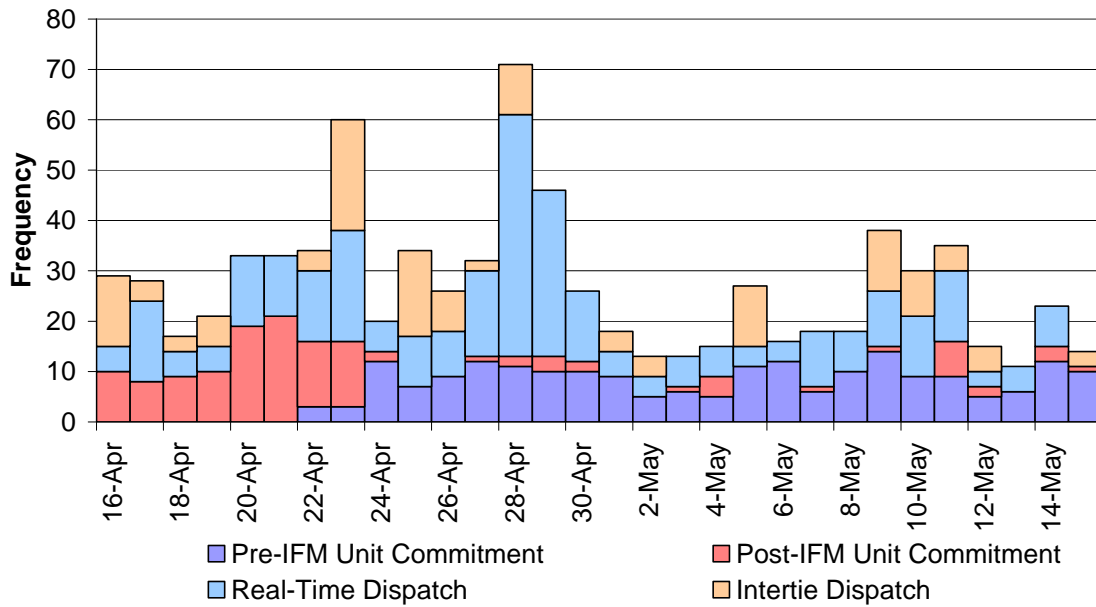


Figure 7: Total Exceptional Dispatch MWh Volume

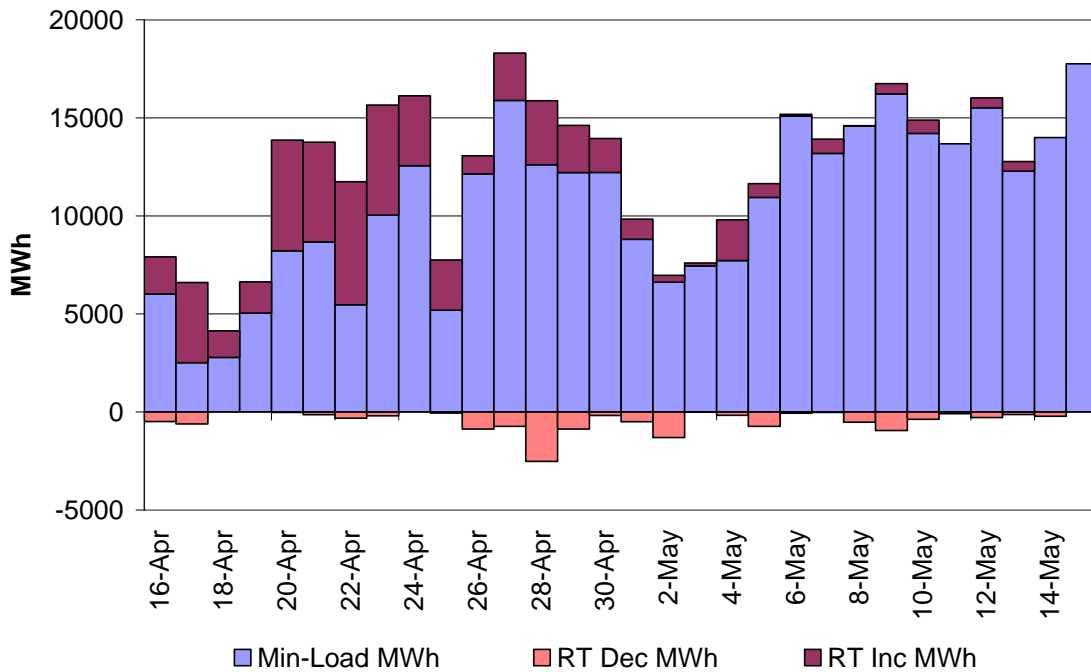
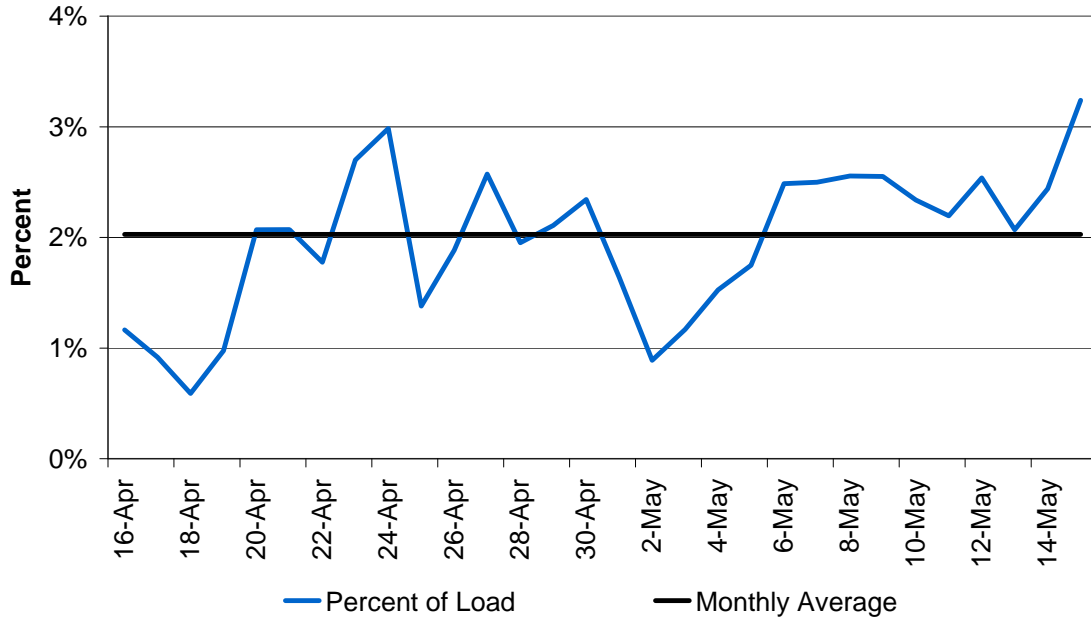


Figure 8: Exceptional Dispatch Percent of Total Load



**California Independent System Operator Corporation
Exception Dispatch Report
August 15, 2009**

Table 1: Exceptional Dispatches--April 16 through May 15

#	Date	Utility District	LR Area	Market	Reason
1	4/16/2009	SCE	LA Basin	RT	T-103
2	4/16/2009	SDGE	San Diego	RT	G-206
3	4/16/2009	SDGE	San Diego	RT	G-206
4	4/16/2009	SDGE	San Diego	RT	Ramp Rate
5	4/16/2009	SDGE	San Diego	RT	Ramp Rate
6	4/16/2009	SCE	LA Basin	RT	T-103
7	4/16/2009	SCE	LA Basin	RT	T-103
8	4/16/2009	SCE	LA Basin	RT	Transmission Outage SCE
9	4/16/2009	SCE	LA Basin	RT	T-103
10	4/16/2009	SCE	LA Basin	RT	G-219
11	4/16/2009	SCE	LA Basin	RT	T-103
12	4/16/2009	SDGE	San Diego	RT	Over Generation
13	4/16/2009	SDGE	San Diego	RT	Over Generation
14	4/16/2009	PASA	LA Basin	RT	Software Limitation
15	4/16/2009	SCE	LA Basin	RT	Software Limitation
16	4/16/2009	Intertie	No LRA	RT	System Energy
17	4/16/2009	Intertie	No LRA	RT	System Energy
18	4/16/2009	Intertie	No LRA	RT	System Energy
19	4/16/2009	Intertie	No LRA	RT	System Energy
20	4/16/2009	Intertie	No LRA	RT	System Energy
21	4/16/2009	Intertie	No LRA	RT	System Energy
22	4/16/2009	Intertie	No LRA	RT	System Energy
23	4/16/2009	Intertie	No LRA	RT	System Energy
24	4/16/2009	Intertie	No LRA	RT	System Energy
25	4/16/2009	Intertie	No LRA	RT	System Energy
26	4/16/2009	Intertie	No LRA	RT	System Energy
27	4/16/2009	Intertie	No LRA	RT	System Energy
28	4/16/2009	Intertie	No LRA	RT	System Energy
29	4/16/2009	Intertie	No LRA	RT	System Energy
30	4/17/2009	PGAE	Sierra	RT	Transmission Outage PGAE
31	4/17/2009	SCE	LA Basin	RT	T-103
32	4/17/2009	SCE	LA Basin	RT	Transmission Outage SCE
33	4/17/2009	SCE	LA Basin	RT	Ramp Rate
34	4/17/2009	SCE	LA Basin	RT	T-103
35	4/17/2009	SCE	LA Basin	RT	T-103
36	4/17/2009	SDGE	San Diego	RT	Transmission Outage SDGE
37	4/17/2009	SDGE	San Diego	RT	Transmission Outage SDGE
38	4/17/2009	SCE	LA Basin	RT	Ramp Rate
39	4/17/2009	SCE	LA Basin	RT	Ramp Rate
40	4/17/2009	PGAE	No LRA	RT	Over Generation
41	4/17/2009	SCE	No LRA	RT	Over Generation
42	4/17/2009	SCE	No LRA	RT	Transmission Outage SCE

#	Date	Utility District	LR Area	Market	Reason
43	4/17/2009	SDGE	San Diego	RT	Transmission Outage SDGE
44	4/17/2009	SDGE	San Diego	RT	Transmission Outage SDGE
45	4/17/2009	SDGE	San Diego	RT	Transmission Outage SDGE
46	4/17/2009	SDGE	San Diego	RT	Transmission Outage SDGE
47	4/17/2009	SDGE	San Diego	RT	Transmission Outage SDGE
48	4/17/2009	SDGE	San Diego	RT	Transmission Outage SDGE
49	4/17/2009	PGAE	No LRA	RT	Software Limitation
50	4/17/2009	PGAE	No LRA	RT	Software Limitation
51	4/17/2009	SDGE	San Diego	RT	Transmission Outage SDGE
52	4/17/2009	SDGE	San Diego	RT	Transmission Outage SDGE
53	4/17/2009	SDGE	San Diego	RT	Transmission Outage SDGE
54	4/17/2009	Intertie	No LRA	RT	HASP Failure
55	4/17/2009	Intertie	No LRA	RT	HASP Failure
56	4/17/2009	Intertie	No LRA	RT	HASP Failure
57	4/17/2009	Intertie	No LRA	RT	HASP Failure
58	4/18/2009	SCE	LA Basin	RT	Ramp Rate
59	4/18/2009	SCE	LA Basin	RT	T-103
60	4/18/2009	SCE	LA Basin	RT	Ramp Rate
61	4/18/2009	SCE	LA Basin	RT	Transmission Outage SCE
62	4/18/2009	SCE	LA Basin	RT	Software Limitation
63	4/18/2009	SCE	LA Basin	RT	Transmission Outage SCE
64	4/18/2009	SCE	LA Basin	RT	T-103
65	4/18/2009	SCE	LA Basin	RT	T-103
66	4/18/2009	SDGE	San Diego	RT	Transmission Outage SDGE
67	4/18/2009	SDGE	San Diego	RT	Transmission Outage SDGE
68	4/18/2009	SDGE	San Diego	RT	Software Limitation
69	4/18/2009	PGAE	No LRA	RT	Software Limitation
70	4/18/2009	PGAE	Fresno	RT	Software Limitation
71	4/18/2009	SDGE	San Diego	RT	Ramp Rate
72	4/18/2009	Intertie	No LRA	RT	System Energy
73	4/18/2009	Intertie	No LRA	RT	System Energy
74	4/18/2009	Intertie	No LRA	RT	System Energy
75	4/19/2009	SCE	LA Basin	RT	SP26 Capacity
76	4/19/2009	SCE	LA Basin	RT	SP26 Capacity
77	4/19/2009	SDGE	San Diego	RT	SP26 Capacity
78	4/19/2009	SDGE	San Diego	RT	Ramp Rate
79	4/19/2009	SDGE	San Diego	RT	G-206
80	4/19/2009	SDGE	San Diego	RT	Transmission Outage SDGE
81	4/19/2009	SCE	LA Basin	RT	SP26 Capacity
82	4/19/2009	SCE	LA Basin	RT	SP26 Capacity
83	4/19/2009	SCE	LA Basin	RT	SP26 Capacity
84	4/19/2009	SCE	LA Basin	RT	Ramp Rate
85	4/19/2009	SCE	BC/Ventura	RT	Ramp Rate
86	4/19/2009	SCE	BC/Ventura	RT	SP26 Capacity
87	4/19/2009	SCE	LA Basin	RT	SP26 Capacity
88	4/19/2009	SDGE	San Diego	RT	Software Limitation
89	4/19/2009	PGAE	Bay Area	RT	Software Limitation

#	Date	Utility District	LR Area	Market	Reason
90	4/19/2009	Intertie	No LRA	RT	System Energy
91	4/19/2009	Intertie	No LRA	RT	System Energy
92	4/19/2009	Intertie	No LRA	RT	System Energy
93	4/19/2009	Intertie	No LRA	RT	System Energy
94	4/19/2009	Intertie	No LRA	RT	System Energy
95	4/19/2009	Intertie	No LRA	RT	System Energy
96	4/20/2009	SCE	BC/Ventura	RT	Software Limitation
97	4/20/2009	SCE	BC/Ventura	RT	Ramp Rate
98	4/20/2009	SCE	BC/Ventura	RT	SP26 Capacity
99	4/20/2009	SCE	LA Basin	RT	SP26 Capacity
100	4/20/2009	SCE	LA Basin	RT	SP26 Capacity
101	4/20/2009	SCE	LA Basin	RT	SP26 Capacity
102	4/20/2009	SCE	LA Basin	RT	Ramp Rate
103	4/20/2009	SCE	LA Basin	RT	Transmission Outage SCE
104	4/20/2009	SCE	LA Basin	RT	Transmission Outage SCE
105	4/20/2009	SCE	LA Basin	RT	G-217
106	4/20/2009	SCE	LA Basin	RT	SP26 Capacity
107	4/20/2009	SCE	LA Basin	RT	Transmission Outage SCE
108	4/20/2009	SCE	LA Basin	RT	SP26 Capacity
109	4/20/2009	SCE	LA Basin	RT	SP26 Capacity
110	4/20/2009	SCE	BC/Ventura	RT	SP26 Capacity
111	4/20/2009	SCE	BC/Ventura	RT	Ramp Rate
112	4/20/2009	PGAE	Bay Area	RT	System Capacity
113	4/20/2009	PGAE	Bay Area	RT	System Capacity
114	4/20/2009	PGAE	Bay Area	RT	System Capacity
115	4/20/2009	SCE	No LRA	RT	SP26 Capacity
116	4/20/2009	SCE	No LRA	RT	SP26 Capacity
117	4/20/2009	SCE	BC/Ventura	RT	SP26 Capacity
118	4/20/2009	SCE	BC/Ventura	RT	Ramp Rate
119	4/20/2009	PGAE	Fresno	RT	Software Limitation
120	4/20/2009	PGAE	No LRA	RT	Software Limitation
121	4/20/2009	PGAE	No LRA	RT	Software Limitation
122	4/20/2009	SCE	BC/Ventura	RT	Ramp Rate
123	4/20/2009	SCE	BC/Ventura	RT	Ramp Rate
124	4/20/2009	SCE	BC/Ventura	RT	Ramp Rate
125	4/20/2009	SCE	BC/Ventura	RT	Ramp Rate
126	4/20/2009	SDGE	San Diego	RT	Ramp Rate
127	4/20/2009	SCE	No LRA	RT	SP26 Capacity
128	4/20/2009	SDGE	San Diego	RT	Software Limitation
129	4/21/2009	SCE	LA Basin	RT	Transmission Outage SCE
130	4/21/2009	SCE	LA Basin	RT	Transmission Outage SCE
131	4/21/2009	SCE	No LRA	RT	SP26 Capacity
132	4/21/2009	SCE	LA Basin	RT	Transmission Outage SCE
133	4/21/2009	SCE	LA Basin	RT	T-103
134	4/21/2009	SDGE	San Diego	RT	SP26 Capacity
135	4/21/2009	SDGE	San Diego	RT	SP26 Capacity
136	4/21/2009	SCE	LA Basin	RT	T-103

#	Date	Utility District	LR Area	Market	Reason
137	4/21/2009	SCE	LA Basin	RT	T-103
138	4/21/2009	SCE	LA Basin	RT	T-103
139	4/21/2009	SCE	LA Basin	RT	T-103
140	4/21/2009	SCE	LA Basin	RT	T-103
141	4/21/2009	SCE	BC/Ventura	RT	T-103
142	4/21/2009	SCE	BC/Ventura	RT	T-103
143	4/21/2009	SCE	BC/Ventura	RT	SP26 Capacity
144	4/21/2009	PGAE	Bay Area	RT	SP26 Capacity
145	4/21/2009	SCE	No LRA	RT	SP26 Capacity
146	4/21/2009	SCE	No LRA	RT	Software Limitation
147	4/21/2009	SDGE	San Diego	RT	Ramp Rate
148	4/21/2009	SCE	BC/Ventura	RT	Ramp Rate
149	4/21/2009	SCE	BC/Ventura	RT	Ramp Rate
150	4/21/2009	SCE	BC/Ventura	RT	SP26 Capacity
151	4/21/2009	SDGE	San Diego	RT	System Capacity
152	4/21/2009	PGAE	Sierra	RT	Transmission Outage PGAE
153	4/21/2009	PGAE	Sierra	RT	Transmission Outage PGAE
154	4/21/2009	PGAE	Sierra	RT	Transmission Outage PGAE
155	4/21/2009	PGAE	Bay Area	RT	Transmission Outage PGAE
156	4/21/2009	PGAE	NCNB	RT	Model Issue
157	4/21/2009	PGAE	NCNB	RT	Software Limitation
158	4/21/2009	SCE	LA Basin	RT	Software Limitation
159	4/21/2009	SDGE	San Diego	RT	T-103
160	4/21/2009	SCE	No LRA	RT	Software Limitation
161	4/21/2009	PGAE	No LRA	RT	Software Limitation
162	4/22/2009	SDGE	San Diego	DA	T-103
163	4/22/2009	SDGE	San Diego	DA	T-103
164	4/22/2009	SDGE	San Diego	DA	T-103
165	4/22/2009	SCE	LA Basin	RT	T-103
166	4/22/2009	SCE	LA Basin	RT	T-103
167	4/22/2009	SCE	LA Basin	RT	T-103
168	4/22/2009	SCE	LA Basin	RT	T-103
169	4/22/2009	SCE	LA Basin	RT	T-103
170	4/22/2009	SCE	LA Basin	RT	T-103
171	4/22/2009	SCE	LA Basin	RT	Transmission Outage SCE
172	4/22/2009	SCE	BC/Ventura	RT	T-103
173	4/22/2009	SCE	BC/Ventura	RT	T-103
174	4/22/2009	SCE	BC/Ventura	RT	T-103
175	4/22/2009	SCE	BC/Ventura	RT	Ramp Rate
176	4/22/2009	SCE	BC/Ventura	RT	Ramp Rate
177	4/22/2009	SCE	LA Basin	RT	T-103
178	4/22/2009	PGAE	Bay Area	RT	Transmission Outage PGAE
179	4/22/2009	SDGE	San Diego	RT	Ramp Rate
180	4/22/2009	PGAE	Bay Area	RT	Transmission Outage PGAE
181	4/22/2009	PGAE	Sierra	RT	Transmission Outage PGAE
182	4/22/2009	PGAE	Sierra	RT	Transmission Outage PGAE
183	4/22/2009	PGAE	Sierra	RT	Transmission Outage PGAE

#	Date	Utility District	LR Area	Market	Reason
184	4/22/2009	PGAE	Sierra	RT	Transmission Outage PGAE
185	4/22/2009	PGAE	Sierra	RT	Transmission Outage PGAE
186	4/22/2009	PGAE	Sierra	RT	Transmission Outage PGAE
187	4/22/2009	PGAE	Sierra	RT	Transmission Outage PGAE
188	4/22/2009	PGAE	Sierra	RT	Transmission Outage PGAE
189	4/22/2009	PGAE	Sierra	RT	Transmission Outage PGAE
190	4/22/2009	SCE	LA Basin	RT	Ramp Rate
191	4/22/2009	SCE	LA Basin	RT	Transmission Outage SCE
192	4/22/2009	Intertie	No LRA	RT	HASP Failure
193	4/22/2009	Intertie	No LRA	RT	HASP Failure
194	4/22/2009	Intertie	No LRA	RT	HASP Failure
195	4/22/2009	Intertie	No LRA	RT	System Energy
196	4/23/2009	SDGE	San Diego	DA	T-103
197	4/23/2009	SDGE	San Diego	DA	T-103
198	4/23/2009	SDGE	San Diego	DA	T-103
199	4/23/2009	SCE	LA Basin	RT	Transmission Outage SCE
200	4/23/2009	SCE	LA Basin	RT	Transmission Outage SCE
201	4/23/2009	SCE	LA Basin	RT	Transmission Outage SCE
202	4/23/2009	SCE	LA Basin	RT	T-103
203	4/23/2009	SCE	LA Basin	RT	T-103
204	4/23/2009	SCE	LA Basin	RT	T-103
205	4/23/2009	SCE	LA Basin	RT	T-103
206	4/23/2009	SCE	LA Basin	RT	T-103
207	4/23/2009	SCE	LA Basin	RT	T-103
208	4/23/2009	SCE	LA Basin	RT	Transmission Outage SCE
209	4/23/2009	SCE	BC/Ventura	RT	Transmission Outage SCE
210	4/23/2009	SCE	BC/Ventura	RT	T-103
211	4/23/2009	SCE	BC/Ventura	RT	T-103
212	4/23/2009	Intertie	No LRA	RT	Over Generation
213	4/23/2009	SCE	LA Basin	RT	Over Generation
214	4/23/2009	SCE	LA Basin	RT	Over Generation
215	4/23/2009	PGAE	Fresno	RT	Over Generation
216	4/23/2009	PGAE	Fresno	RT	Over Generation
217	4/23/2009	PGAE	Fresno	RT	Over Generation
218	4/23/2009	PGAE	Fresno	RT	Over Generation
219	4/23/2009	SCE	LA Basin	RT	Ramp Rate
220	4/23/2009	SCE	LA Basin	RT	Ramp Rate
221	4/23/2009	SCE	LA Basin	RT	Ramp Rate
222	4/23/2009	SCE	BC/Ventura	RT	Ramp Rate
223	4/23/2009	SCE	LA Basin	RT	Ramp Rate
224	4/23/2009	SCE	BC/Ventura	RT	Ramp Rate
225	4/23/2009	SCE	BC/Ventura	RT	Ramp Rate
226	4/23/2009	PGAE	Sierra	RT	Software Limitation
227	4/23/2009	PGAE	Sierra	RT	Software Limitation
228	4/23/2009	SCE	No LRA	RT	Region Reliability
229	4/23/2009	SCE	No LRA	RT	Region Reliability
230	4/23/2009	SCE	BC/Ventura	RT	Region Reliability

#	Date	Utility District	LR Area	Market	Reason
231	4/23/2009	SCE	BC/Ventura	RT	Region Reliability
232	4/23/2009	PG&E	NCNB	RT	Over Generation
233	4/23/2009	SCE	BC/Ventura	RT	Over Generation
234	4/23/2009	SCE	BC/Ventura	RT	Over Generation
235	4/23/2009	Intertie	No LRA	RT	System Energy
236	4/23/2009	Intertie	No LRA	RT	System Energy
237	4/23/2009	Intertie	No LRA	RT	System Energy
238	4/23/2009	Intertie	No LRA	RT	System Energy
239	4/23/2009	Intertie	No LRA	RT	System Energy
240	4/23/2009	Intertie	No LRA	RT	System Energy
241	4/23/2009	Intertie	No LRA	RT	System Energy
242	4/23/2009	Intertie	No LRA	RT	System Energy
243	4/23/2009	Intertie	No LRA	RT	System Energy
244	4/23/2009	Intertie	No LRA	RT	System Energy
245	4/23/2009	Intertie	No LRA	RT	System Energy
246	4/23/2009	Intertie	No LRA	RT	System Energy
247	4/23/2009	Intertie	No LRA	RT	System Energy
248	4/23/2009	Intertie	No LRA	RT	System Energy
249	4/23/2009	Intertie	No LRA	RT	System Energy
250	4/23/2009	Intertie	No LRA	RT	System Energy
251	4/23/2009	Intertie	No LRA	RT	System Energy
252	4/23/2009	Intertie	No LRA	RT	System Energy
253	4/23/2009	Intertie	No LRA	RT	System Energy
254	4/23/2009	Intertie	No LRA	RT	System Energy
255	4/23/2009	Intertie	No LRA	RT	System Energy
256	4/24/2009	SCE	LA Basin	DA	G-217
257	4/24/2009	SCE	LA Basin	DA	G-217
258	4/24/2009	SCE	LA Basin	DA	Path 26
259	4/24/2009	SCE	LA Basin	RT	Path 26
260	4/24/2009	SCE	LA Basin	DA	Path 26
261	4/24/2009	SCE	LA Basin	RT	Ramp Rate
262	4/24/2009	SCE	BC/Ventura	DA	Path 26
263	4/24/2009	SCE	LA Basin	DA	G-217
264	4/24/2009	SCE	LA Basin	DA	G-217
265	4/24/2009	SDGE	San Diego	RT	Ramp Rate
266	4/24/2009	SDGE	San Diego	DA	Transmission Outage SDGE
267	4/24/2009	SDGE	San Diego	RT	Transmission Outage SDGE
268	4/24/2009	SDGE	San Diego	RT	Software Limitation
269	4/24/2009	SCE	LA Basin	RT	Ramp Rate
270	4/24/2009	SCE	LA Basin	RT	Ramp Rate
271	4/24/2009	SCE	LA Basin	DA	Transmission Outage SCE
272	4/24/2009	SCE	LA Basin	DA	Transmission Outage SCE
273	4/24/2009	SCE	LA Basin	DA	T-103
274	4/24/2009	SCE	LA Basin	DA	Transmission Outage SCE
275	4/24/2009	SCE	LA Basin	RT	Ramp Rate
276	4/25/2009	SCE	LA Basin	DA	T-103
277	4/25/2009	SCE	LA Basin	DA	G-217

#	Date	Utility District	LR Area	Market	Reason
278	4/25/2009	SCE	LA Basin	DA	G-217
279	4/25/2009	SCE	LA Basin	DA	T-103
280	4/25/2009	SCE	BC/Ventura	DA	T-103
281	4/25/2009	SCE	BC/Ventura	DA	T-103
282	4/25/2009	SCE	LA Basin	RT	Ramp Rate
283	4/25/2009	PGAE	Humboldt	RT	Transmission Outage PGAE
284	4/25/2009	PGAE	Humboldt	DA	Transmission Outage PGAE
285	4/25/2009	PGAE	Humboldt	RT	Transmission Outage PGAE
286	4/25/2009	PGAE	Humboldt	RT	Transmission Outage PGAE
287	4/25/2009	PGAE	Humboldt	RT	Transmission Outage PGAE
288	4/25/2009	PGAE	Humboldt	RT	Transmission Outage PGAE
289	4/25/2009	SDGE	San Diego	RT	Ramp Rate
290	4/25/2009	PGAE	Humboldt	RT	Transmission Outage PGAE
291	4/25/2009	PGAE	No LRA	RT	Transmission Outage PGAE
292	4/25/2009	PGAE	No LRA	RT	Transmission Outage PGAE
293	4/25/2009	Intertie	No LRA	RT	System Energy
294	4/25/2009	Intertie	No LRA	RT	System Energy
295	4/25/2009	Intertie	No LRA	RT	System Energy
296	4/25/2009	Intertie	No LRA	RT	System Energy
297	4/25/2009	Intertie	No LRA	RT	System Energy
298	4/25/2009	Intertie	No LRA	RT	System Energy
299	4/25/2009	Intertie	No LRA	RT	System Energy
300	4/25/2009	Intertie	No LRA	RT	System Energy
301	4/25/2009	Intertie	No LRA	RT	System Energy
302	4/25/2009	Intertie	No LRA	RT	System Energy
303	4/25/2009	Intertie	No LRA	RT	System Energy
304	4/25/2009	Intertie	No LRA	RT	System Energy
305	4/25/2009	Intertie	No LRA	RT	System Energy
306	4/25/2009	Intertie	No LRA	RT	System Energy
307	4/25/2009	Intertie	No LRA	RT	System Energy
308	4/25/2009	Intertie	No LRA	RT	System Energy
309	4/25/2009	Intertie	No LRA	RT	System Energy
310	4/26/2009	SDGE	San Diego	DA	G-206
311	4/26/2009	SDGE	San Diego	RT	Ramp Rate
312	4/26/2009	SCE	LA Basin	DA	T-103
313	4/26/2009	SCE	LA Basin	DA	Transmission Outage SCE
314	4/26/2009	SCE	LA Basin	DA	Transmission Outage SCE
315	4/26/2009	SCE	LA Basin	RT	Ramp Rate
316	4/26/2009	SCE	LA Basin	DA	Transmission Outage SCE
317	4/26/2009	SCE	LA Basin	DA	Transmission Outage SCE
318	4/26/2009	SCE	LA Basin	DA	T-103
319	4/26/2009	SCE	BC/Ventura	DA	T-103
320	4/26/2009	SCE	BC/Ventura	DA	T-103
321	4/26/2009	PGAE	No LRA	RT	Software Limitation
322	4/26/2009	PGAE	Humboldt	RT	Transmission Outage PGAE
323	4/26/2009	PGAE	Humboldt	RT	Transmission Outage PGAE
324	4/26/2009	PGAE	Humboldt	RT	Transmission Outage PGAE

#	Date	Utility District	LR Area	Market	Reason
325	4/26/2009	PGAE	Humboldt	RT	Transmission Outage PGAE
326	4/26/2009	PGAE	No LRA	RT	Transmission Outage PGAE
327	4/26/2009	PGAE	No LRA	RT	Transmission Outage PGAE
328	4/26/2009	Intertie	No LRA	RT	System Energy
329	4/26/2009	Intertie	No LRA	RT	System Energy
330	4/26/2009	Intertie	No LRA	RT	System Energy
331	4/26/2009	Intertie	No LRA	RT	System Energy
332	4/26/2009	Intertie	No LRA	RT	System Energy
333	4/26/2009	Intertie	No LRA	RT	System Energy
334	4/26/2009	Intertie	No LRA	RT	System Energy
335	4/26/2009	Intertie	No LRA	RT	System Energy
336	4/27/2009	SDGE	San Diego	DA	G-206
337	4/27/2009	SCE	LA Basin	DA	Path 26
338	4/27/2009	SCE	LA Basin	RT	Ramp Rate
339	4/27/2009	SCE	LA Basin	DA	Transmission Outage SCE
340	4/27/2009	SCE	LA Basin	RT	Ramp Rate
341	4/27/2009	SCE	LA Basin	DA	Path 26
342	4/27/2009	SCE	BC/Ventura	RT	Ramp Rate
343	4/27/2009	SCE	BC/Ventura	DA	Path 26
344	4/27/2009	SCE	BC/Ventura	RT	Ramp Rate
345	4/27/2009	SCE	BC/Ventura	DA	Path 26
346	4/27/2009	SCE	LA Basin	DA	Transmission Outage SCE
347	4/27/2009	SCE	LA Basin	RT	Ramp Rate
348	4/27/2009	SCE	LA Basin	DA	Transmission Outage SCE
349	4/27/2009	SCE	LA Basin	DA	Transmission Outage SCE
350	4/27/2009	SCE	LA Basin	DA	Path 26
351	4/27/2009	SCE	LA Basin	DA	Path 26
352	4/27/2009	SCE	LA Basin	DA	Path 26
353	4/27/2009	PGAE	Humboldt	RT	T-138
354	4/27/2009	PGAE	Humboldt	RT	T-138
355	4/27/2009	PGAE	Humboldt	RT	T-138
356	4/27/2009	PGAE	Humboldt	RT	T-138
357	4/27/2009	PGAE	Humboldt	RT	T-138
358	4/27/2009	PGAE	Humboldt	RT	T-138
359	4/27/2009	PGAE	Humboldt	RT	T-138
360	4/27/2009	PGAE	No LRA	RT	Transmission Outage PGAE
361	4/27/2009	PGAE	No LRA	RT	Transmission Outage PGAE
362	4/27/2009	PGAE	No LRA	RT	Transmission Outage PGAE
363	4/27/2009	SDGE	San Diego	RT	G-206
364	4/27/2009	PGAE	Humboldt	RT	Transmission Outage PGAE
365	4/27/2009	PGAE	Humboldt	RT	Transmission Outage PGAE
366	4/27/2009	Intertie	No LRA	RT	HASP Failure
367	4/27/2009	Intertie	No LRA	RT	HASP Failure
368	4/28/2009	PGAE	Humboldt	RT	Transmission Outage PGAE
369	4/28/2009	PGAE	Humboldt	RT	Transmission Outage PGAE
370	4/28/2009	PGAE	Humboldt	RT	Transmission Outage PGAE
371	4/28/2009	PGAE	Humboldt	RT	Transmission Outage PGAE

#	Date	Utility District	LR Area	Market	Reason
372	4/28/2009	PGAE	Humboldt	RT	Transmission Outage PGAE
373	4/28/2009	PGAE	Humboldt	RT	Transmission Outage PGAE
374	4/28/2009	PGAE	Humboldt	RT	Transmission Outage PGAE
375	4/28/2009	PGAE	Humboldt	RT	Transmission Outage PGAE
376	4/28/2009	PGAE	Humboldt	RT	Transmission Outage PGAE
377	4/28/2009	PGAE	Humboldt	RT	Transmission Outage PGAE
378	4/28/2009	PGAE	Humboldt	RT	Transmission Outage PGAE
379	4/28/2009	PGAE	Humboldt	RT	Transmission Outage PGAE
380	4/28/2009	PGAE	Humboldt	RT	Transmission Outage PGAE
381	4/28/2009	PGAE	Humboldt	RT	Transmission Outage PGAE
382	4/28/2009	SCE	LA Basin	DA	Transmission Outage SCE
383	4/28/2009	SCE	LA Basin	RT	Transmission Outage SCE
384	4/28/2009	SCE	BC/Ventura	RT	System Capacity
385	4/28/2009	SCE	BC/Ventura	DA	SP26 Capacity
386	4/28/2009	SCE	BC/Ventura	RT	Ramp Rate
387	4/28/2009	SCE	BC/Ventura	DA	SP26 Capacity
388	4/28/2009	SCE	BC/Ventura	RT	Ramp Rate
389	4/28/2009	SCE	LA Basin	DA	Transmission Outage SCE
390	4/28/2009	SCE	LA Basin	RT	Ramp Rate
391	4/28/2009	PGAE	Humboldt	RT	Transmission Outage PGAE
392	4/28/2009	PGAE	Humboldt	RT	Transmission Outage PGAE
393	4/28/2009	PGAE	Humboldt	RT	Transmission Outage PGAE
394	4/28/2009	PGAE	Humboldt	RT	Transmission Outage PGAE
395	4/28/2009	PGAE	Humboldt	RT	Transmission Outage PGAE
396	4/28/2009	PGAE	Humboldt	RT	Transmission Outage PGAE
397	4/28/2009	SDGE	San Diego	DA	Transmission Outage SDGE
398	4/28/2009	SDGE	San Diego	RT	Ramp Rate
399	4/28/2009	PGAE	Stockton	RT	Transmission Outage PGAE
400	4/28/2009	PGAE	No LRA	RT	Transmission Outage PGAE
401	4/28/2009	PGAE	No LRA	RT	Transmission Outage PGAE
402	4/28/2009	PGAE	No LRA	RT	Transmission Outage PGAE
403	4/28/2009	PGAE	No LRA	RT	Transmission Outage PGAE
404	4/28/2009	PGAE	No LRA	RT	Transmission Outage PGAE
405	4/28/2009	SCE	LA Basin	RT	Over Generation
406	4/28/2009	SCE	LA Basin	DA	Transmission Outage SCE
407	4/28/2009	PGAE	Sierra	RT	Ramp Rate
408	4/28/2009	PGAE	Sierra	RT	Ramp Rate
409	4/28/2009	PGAE	Sierra	RT	Ramp Rate
410	4/28/2009	PGAE	Sierra	RT	Ramp Rate
411	4/28/2009	PGAE	Sierra	RT	Ramp Rate
412	4/28/2009	PGAE	Sierra	RT	Ramp Rate
413	4/28/2009	PGAE	Sierra	RT	Transmission Outage PGAE
414	4/28/2009	PGAE	Sierra	RT	Transmission Outage PGAE
415	4/28/2009	SCE	BC/Ventura	RT	System Capacity
416	4/28/2009	PGAE	No LRA	RT	Software Limitation
417	4/28/2009	PGAE	No LRA	RT	Software Limitation
418	4/28/2009	SCE	BC/Ventura	RT	Software Limitation

#	Date	Utility District	LR Area	Market	Reason
419	4/28/2009	SCE	BC/Ventura	RT	Software Limitation
420	4/28/2009	SCE	LA Basin	DA	Transmission Outage SCE
421	4/28/2009	SCE	LA Basin	DA	G-219
422	4/28/2009	SCE	LA Basin	DA	SP26 Capacity
423	4/28/2009	SCE	LA Basin	DA	SP26 Capacity
424	4/28/2009	SCE	LA Basin	DA	SP26 Capacity
425	4/28/2009	PGAE	No LRA	RT	Unit Testing
426	4/28/2009	PGAE	No LRA	RT	Unit Testing
427	4/28/2009	PGAE	No LRA	RT	Unit Testing
428	4/28/2009	PGAE	No LRA	RT	Unit Testing
429	4/28/2009	Intertie	No LRA	RT	HASP Failure
430	4/28/2009	Intertie	No LRA	RT	System Energy
431	4/28/2009	Intertie	No LRA	RT	System Energy
432	4/28/2009	Intertie	No LRA	RT	HASP Failure
433	4/28/2009	Intertie	No LRA	RT	HASP Failure
434	4/28/2009	Intertie	No LRA	RT	HASP Failure
435	4/28/2009	Intertie	No LRA	RT	HASP Failure
436	4/28/2009	Intertie	No LRA	RT	HASP Failure
437	4/28/2009	Intertie	No LRA	RT	HASP Failure
438	4/28/2009	Intertie	No LRA	RT	HASP Failure
439	4/29/2009	PGAE	Sierra	RT	Transmission Outage PGAE
440	4/29/2009	PGAE	Sierra	RT	Transmission Outage PGAE
441	4/29/2009	PGAE	Humboldt	RT	Transmission Outage PGAE
442	4/29/2009	PGAE	Humboldt	RT	Transmission Outage PGAE
443	4/29/2009	PGAE	Humboldt	RT	Transmission Outage PGAE
444	4/29/2009	PGAE	Humboldt	RT	Transmission Outage PGAE
445	4/29/2009	PGAE	Humboldt	RT	Transmission Outage PGAE
446	4/29/2009	PGAE	Humboldt	RT	Transmission Outage PGAE
447	4/29/2009	PGAE	Humboldt	RT	Transmission Outage PGAE
448	4/29/2009	PGAE	Humboldt	RT	Transmission Outage PGAE
449	4/29/2009	SCE	BC/Ventura	RT	Software Limitation
450	4/29/2009	PGAE	Humboldt	RT	Transmission Outage PGAE
451	4/29/2009	PGAE	Humboldt	RT	Transmission Outage PGAE
452	4/29/2009	PGAE	Humboldt	RT	Transmission Outage PGAE
453	4/29/2009	PGAE	Humboldt	RT	Transmission Outage PGAE
454	4/29/2009	PGAE	Humboldt	RT	Transmission Outage PGAE
455	4/29/2009	PGAE	Humboldt	RT	Transmission Outage PGAE
456	4/29/2009	PGAE	Humboldt	RT	Transmission Outage PGAE
457	4/29/2009	PGAE	Humboldt	RT	Transmission Outage PGAE
458	4/29/2009	PGAE	Humboldt	RT	Transmission Outage PGAE
459	4/29/2009	PGAE	Humboldt	RT	Software Limitation
460	4/29/2009	SCE	LA Basin	DA	Transmission Outage SCE
461	4/29/2009	SCE	LA Basin	RT	Ramp Rate
462	4/29/2009	PGAE	Sierra	RT	Software Limitation
463	4/29/2009	PGAE	Sierra	RT	Software Limitation
464	4/29/2009	PGAE	Sierra	RT	Software Limitation
465	4/29/2009	PGAE	Sierra	RT	Software Limitation

#	Date	Utility District	LR Area	Market	Reason
466	4/29/2009	PGAE	Sierra	RT	Software Limitation
467	4/29/2009	PGAE	Sierra	RT	Software Limitation
468	4/29/2009	SCE	BC/Ventura	RT	Ramp Rate
469	4/29/2009	SCE	BC/Ventura	RT	Ramp Rate
470	4/29/2009	PGAE	Fresno	RT	Over Generation
471	4/29/2009	PGAE	Fresno	RT	Over Generation
472	4/29/2009	PGAE	Fresno	RT	Over Generation
473	4/29/2009	PGAE	Fresno	RT	Over Generation
474	4/29/2009	SCE	LA Basin	RT	Ramp Rate
475	4/29/2009	SCE	LA Basin	DA	Transmission Outage SCE
476	4/29/2009	SCE	LA Basin	DA	SP26 Capacity
477	4/29/2009	SCE	LA Basin	DA	SP26 Capacity
478	4/29/2009	SCE	BC/Ventura	DA	SP26 Capacity
479	4/29/2009	SCE	BC/Ventura	DA	SP26 Capacity
480	4/29/2009	SDGE	San Diego	DA	Transmission Outage SDGE
481	4/29/2009	SCE	LA Basin	DA	Transmission Outage SCE
482	4/29/2009	SCE	LA Basin	DA	Transmission Outage SCE
483	4/29/2009	SCE	LA Basin	DA	G-219
484	4/29/2009	PGAE	No LRA	RT	Software Limitation
485	4/30/2009	SCE	LA Basin	DA	Transmission Outage SCE
486	4/30/2009	SCE	LA Basin	DA	Transmission Outage SCE
487	4/30/2009	SDGE	San Diego	DA	Transmission Outage SDGE
488	4/30/2009	SCE	LA Basin	DA	Transmission Outage SCE
489	4/30/2009	SCE	LA Basin	DA	Transmission Outage SCE
490	4/30/2009	SCE	LA Basin	DA	G-219
491	4/30/2009	SCE	BC/Ventura	DA	SP26 Capacity
492	4/30/2009	SCE	BC/Ventura	DA	SP26 Capacity
493	4/30/2009	SCE	LA Basin	DA	SP26 Capacity
494	4/30/2009	SCE	LA Basin	DA	SP26 Capacity
495	4/30/2009	SCE	LA Basin	RT	Ramp Rate
496	4/30/2009	PGAE	Sierra	RT	Transmission Outage PGAE
497	4/30/2009	PGAE	Sierra	RT	Transmission Outage PGAE
498	4/30/2009	SCE	LA Basin	RT	Ramp Rate
499	4/30/2009	SCE	BC/Ventura	RT	Ramp Rate
500	4/30/2009	SCE	BC/Ventura	RT	Ramp Rate
501	4/30/2009	PGAE	Humboldt	RT	Transmission Outage PGAE
502	4/30/2009	PGAE	Humboldt	RT	Transmission Outage PGAE
503	4/30/2009	PGAE	Humboldt	RT	Transmission Outage PGAE
504	4/30/2009	PGAE	Humboldt	RT	Transmission Outage PGAE
505	4/30/2009	PGAE	Humboldt	RT	Transmission Outage PGAE
506	4/30/2009	PGAE	Humboldt	RT	Transmission Outage PGAE
507	4/30/2009	PGAE	Humboldt	RT	Transmission Outage PGAE
508	4/30/2009	PGAE	Humboldt	RT	Transmission Outage PGAE
509	4/30/2009	SCE	BC/Ventura	RT	Transmission Outage (Other)
510	4/30/2009	PGAE	Humboldt	RT	Software Limitation
511	5/1/2009	SDGE	San Diego	DA	Transmission Outage SDGE
512	5/1/2009	SCE	LA Basin	DA	G-219

#	Date	Utility District	LR Area	Market	Reason
513	5/1/2009	SCE	LA Basin	DA	Transmission Outage SCE
514	5/1/2009	SCE	LA Basin	DA	Transmission Outage SCE
515	5/1/2009	SCE	LA Basin	RT	Ramp Rate
516	5/1/2009	SCE	LA Basin	DA	Transmission Outage SCE
517	5/1/2009	SCE	BC/Ventura	DA	Transmission Outage SCE
518	5/1/2009	SCE	BC/Ventura	DA	SP26 Capacity
519	5/1/2009	SCE	LA Basin	DA	SP26 Capacity
520	5/1/2009	SCE	LA Basin	DA	SP26 Capacity
521	5/1/2009	SDGE	San Diego	RT	Ramp Rate
522	5/1/2009	SCE	LA Basin	RT	Ramp Rate
523	5/1/2009	SCE	BC/Ventura	RT	Ramp Rate
524	5/1/2009	SCE	BC/Ventura	RT	Ramp Rate
525	5/1/2009	Intertie	No LRA	RT	HASP Failure
526	5/1/2009	Intertie	No LRA	RT	HASP Failure
527	5/1/2009	Intertie	No LRA	RT	HASP Failure
528	5/1/2009	Intertie	No LRA	RT	HASP Failure
529	5/2/2009	SDGE	San Diego	DA	Transmission Outage SDGE
530	5/2/2009	SCE	LA Basin	DA	Transmission Outage SCE
531	5/2/2009	SCE	LA Basin	DA	Transmission Outage SCE
532	5/2/2009	SCE	LA Basin	RT	Ramp Rate
533	5/2/2009	SCE	LA Basin	DA	Transmission Outage SCE
534	5/2/2009	SCE	BC/Ventura	RT	Ramp Rate
535	5/2/2009	SCE	BC/Ventura	DA	Transmission Outage SCE
536	5/2/2009	PGAE	Fresno	RT	Software Limitation
537	5/2/2009	PGAE	Humboldt	RT	T-138
538	5/2/2009	Intertie	No LRA	RT	System Energy
539	5/2/2009	Intertie	No LRA	RT	System Energy
540	5/2/2009	Intertie	No LRA	RT	System Energy
541	5/2/2009	Intertie	No LRA	RT	System Energy
542	5/3/2009	SDGE	San Diego	DA	Transmission Outage SDGE
543	5/3/2009	SCE	LA Basin	DA	Transmission Outage SCE
544	5/3/2009	SCE	LA Basin	DA	Transmission Outage SCE
545	5/3/2009	SCE	LA Basin	DA	Transmission Outage SCE
546	5/3/2009	SCE	BC/Ventura	DA	Transmission Outage SCE
547	5/3/2009	SCE	LA Basin	DA	Transmission Outage SCE
548	5/3/2009	SCE	BC/Ventura	RT	Software Limitation
549	5/3/2009	PGAE	Fresno	RT	Software Limitation
550	5/3/2009	SCE	BC/Ventura	RT	Software Limitation
551	5/3/2009	SCE	LA Basin	RT	Ramp Rate
552	5/3/2009	SCE	LA Basin	RT	Ramp Rate
553	5/3/2009	SCE	BC/Ventura	RT	Ramp Rate
554	5/3/2009	SDGE	San Diego	RT	Ramp Rate
555	5/4/2009	SDGE	San Diego	RT	Ramp Rate
556	5/4/2009	SDGE	San Diego	DA	Transmission Outage SDGE
557	5/4/2009	SCE	LA Basin	DA	Transmission Outage SCE
558	5/4/2009	SCE	LA Basin	DA	Transmission Outage SCE
559	5/4/2009	SCE	BC/Ventura	RT	Ramp Rate

#	Date	Utility District	LR Area	Market	Reason
560	5/4/2009	SCE	BC/Ventura	DA	Transmission Outage SCE
561	5/4/2009	SCE	LA Basin	DA	Transmission Outage SCE
562	5/4/2009	SCE	LA Basin	RT	Transmission Outage SCE
563	5/4/2009	SCE	LA Basin	RT	Transmission Outage SCE
564	5/4/2009	SCE	LA Basin	RT	Transmission Outage SCE
565	5/4/2009	SCE	BC/Ventura	RT	Transmission Outage SCE
566	5/4/2009	SCE	BC/Ventura	RT	Ramp Rate
567	5/4/2009	SCE	LA Basin	RT	Ramp Rate
568	5/4/2009	PGAE	Humboldt	RT	Transmission Outage PGAE
569	5/4/2009	PGAE	Humboldt	RT	Transmission Outage PGAE
570	5/5/2009	SCE	LA Basin	DA	Transmission Outage SCE
571	5/5/2009	SCE	LA Basin	DA	Transmission Outage SCE
572	5/5/2009	SCE	LA Basin	DA	Transmission Outage SCE
573	5/5/2009	SDGE	San Diego	DA	Transmission Outage SCE
574	5/5/2009	SCE	LA Basin	DA	Transmission Outage SCE
575	5/5/2009	SCE	LA Basin	DA	Transmission Outage SCE
576	5/5/2009	SCE	LA Basin	DA	Transmission Outage SCE
577	5/5/2009	SCE	LA Basin	DA	Transmission Outage SCE
578	5/5/2009	SCE	BC/Ventura	DA	Transmission Outage SCE
579	5/5/2009	SCE	BC/Ventura	DA	Transmission Outage SCE
580	5/5/2009	SCE	LA Basin	DA	Transmission Outage SCE
581	5/5/2009	SCE	LA Basin	RT	Ramp Rate
582	5/5/2009	SCE	LA Basin	RT	Ramp Rate
583	5/5/2009	PGAE	Humboldt	RT	Transmission Outage PGAE
584	5/5/2009	PGAE	Bay Area	RT	Software Limitation
585	5/5/2009	Intertie	No LRA	RT	HASP Failure
586	5/5/2009	Intertie	No LRA	RT	HASP Failure
587	5/5/2009	Intertie	No LRA	RT	HASP Failure
588	5/5/2009	Intertie	No LRA	RT	HASP Failure
589	5/5/2009	Intertie	No LRA	RT	HASP Failure
590	5/5/2009	Intertie	No LRA	RT	HASP Failure
591	5/5/2009	Intertie	No LRA	RT	HASP Failure
592	5/5/2009	Intertie	No LRA	RT	HASP Failure
593	5/5/2009	Intertie	No LRA	RT	HASP Failure
594	5/5/2009	Intertie	No LRA	RT	HASP Failure
595	5/5/2009	Intertie	No LRA	RT	HASP Failure
596	5/5/2009	Intertie	No LRA	RT	HASP Failure
597	5/6/2009	SCE	LA Basin	DA	Transmission Outage SCE
598	5/6/2009	SCE	LA Basin	DA	Transmission Outage SCE
599	5/6/2009	SCE	LA Basin	DA	Transmission Outage SCE
600	5/6/2009	SCE	LA Basin	DA	Transmission Outage SCE
601	5/6/2009	SDGE	San Diego	DA	Transmission Outage SCE
602	5/6/2009	SDGE	San Diego	RT	Ramp Rate
603	5/6/2009	SCE	LA Basin	DA	Transmission Outage SCE
604	5/6/2009	SCE	LA Basin	DA	Transmission Outage SCE
605	5/6/2009	SCE	LA Basin	DA	Transmission Outage SCE
606	5/6/2009	SCE	LA Basin	DA	Transmission Outage SCE

#	Date	Utility District	LR Area	Market	Reason
607	5/6/2009	SCE	LA Basin	DA	Transmission Outage SCE
608	5/6/2009	SCE	No LRA	DA	System Capacity
609	5/6/2009	SCE	BC/Ventura	DA	System Capacity
610	5/6/2009	PGAE	Humboldt	RT	Transmission Outage PGAE
611	5/6/2009	PGAE	Bay Area	RT	Software Limitation
612	5/6/2009	SCE	BC/Ventura	RT	Software Limitation
613	5/7/2009	SCE	LA Basin	DA	Transmission Outage SDGE
614	5/7/2009	SCE	LA Basin	DA	Transmission Outage SDGE
615	5/7/2009	SDGE	San Diego	DA	Transmission Outage (Other)
616	5/7/2009	SCE	LA Basin	DA	Transmission Outage SDGE
617	5/7/2009	SCE	LA Basin	DA	Transmission Outage SDGE
618	5/7/2009	SCE	LA Basin	DA	Transmission Outage SCE
619	5/7/2009	SCE	LA Basin	RT	Ramp Rate
620	5/7/2009	SDGE	San Diego	RT	Transmission Outage SDGE
621	5/7/2009	SCE	LA Basin	RT	SP26 Capacity
622	5/7/2009	SCE	LA Basin	RT	Ramp Rate
623	5/7/2009	SCE	LA Basin	RT	Software Limitation
624	5/7/2009	SCE	LA Basin	RT	Software Limitation
625	5/7/2009	SCE	LA Basin	RT	Software Limitation
626	5/7/2009	SCE	BC/Ventura	RT	Software Limitation
627	5/7/2009	SCE	LA Basin	RT	Software Limitation
628	5/7/2009	SCE	BC/Ventura	RT	Software Limitation
629	5/7/2009	SDGE	San Diego	RT	Unit Testing
630	5/7/2009	SDGE	San Diego	RT	Unit Testing
631	5/8/2009	SDGE	San Diego	DA	Transmission Outage SDGE
632	5/8/2009	SCE	LA Basin	DA	Transmission Outage SDGE
633	5/8/2009	SCE	LA Basin	DA	Transmission Outage SDGE
634	5/8/2009	SCE	LA Basin	DA	Transmission Outage SDGE
635	5/8/2009	SCE	LA Basin	DA	Transmission Outage SDGE
636	5/8/2009	SCE	LA Basin	DA	Transmission Outage SDGE
637	5/8/2009	SCE	LA Basin	DA	Transmission Outage SDGE
638	5/8/2009	SDGE	San Diego	DA	Transmission Outage SDGE
639	5/8/2009	SCE	LA Basin	DA	Transmission Outage SDGE
640	5/8/2009	SCE	No LRA	DA	Software Limitation
641	5/8/2009	PGAE	Sierra	RT	Transmission Outage PGAE
642	5/8/2009	PGAE	Sierra	RT	Transmission Outage PGAE
643	5/8/2009	PGAE	Sierra	RT	Transmission Outage PGAE
644	5/8/2009	PGAE	Sierra	RT	Transmission Outage PGAE
645	5/8/2009	PGAE	Sierra	RT	Transmission Outage PGAE
646	5/8/2009	PGAE	Humboldt	RT	T-138
647	5/8/2009	PGAE	Humboldt	RT	T-138
648	5/8/2009	PGAE	Fresno	RT	Software Limitation
649	5/9/2009	SDGE	San Diego	DA	Transmission Outage SDGE
650	5/9/2009	SCE	LA Basin	DA	Transmission Outage SDGE
651	5/9/2009	SDGE	San Diego	DA	Transmission Outage SDGE
652	5/9/2009	SCE	LA Basin	DA	Transmission Outage SDGE
653	5/9/2009	SCE	LA Basin	DA	Transmission Outage SDGE

#	Date	Utility District	LR Area	Market	Reason
654	5/9/2009	SCE	LA Basin	DA	Transmission Outage SDGE
655	5/9/2009	SCE	LA Basin	DA	Transmission Outage SDGE
656	5/9/2009	SCE	LA Basin	DA	Transmission Outage SDGE
657	5/9/2009	SCE	LA Basin	DA	Transmission Outage SDGE
658	5/9/2009	SCE	BC/Ventura	DA	Transmission Outage SCE
659	5/9/2009	SCE	BC/Ventura	RT	Transmission Outage SCE
660	5/9/2009	SCE	BC/Ventura	RT	Ramp Rate
661	5/9/2009	SCE	LA Basin	DA	Transmission Outage SDGE
662	5/9/2009	SCE	LA Basin	DA	Transmission Outage SDGE
663	5/9/2009	SDGE	San Diego	DA	Transmission Outage SDGE
664	5/9/2009	SCE	LA Basin	DA	Transmission Outage SDGE
665	5/9/2009	PGAE	Fresno	RT	Software Limitation
666	5/9/2009	PGAE	Fresno	RT	Software Limitation
667	5/9/2009	PGAE	Sierra	RT	Software Limitation
668	5/9/2009	PGAE	Sierra	RT	Software Limitation
669	5/9/2009	PGAE	Sierra	RT	Software Limitation
670	5/9/2009	PGAE	Sierra	RT	Transmission Outage PGAE
671	5/9/2009	SDGE	San Diego	RT	Software Limitation
672	5/9/2009	SDGE	San Diego	RT	Software Limitation
673	5/9/2009	PASA	LA Basin	RT	Software Limitation
674	5/9/2009	PASA	LA Basin	RT	Software Limitation
675	5/9/2009	Intertie	No LRA	RT	HASP Failure
676	5/9/2009	Intertie	No LRA	RT	HASP Failure
677	5/9/2009	Intertie	No LRA	RT	HASP Failure
678	5/9/2009	Intertie	No LRA	RT	HASP Failure
679	5/9/2009	Intertie	No LRA	RT	HASP Failure
680	5/9/2009	Intertie	No LRA	RT	HASP Failure
681	5/9/2009	Intertie	No LRA	RT	HASP Failure
682	5/9/2009	Intertie	No LRA	RT	HASP Failure
683	5/9/2009	Intertie	No LRA	RT	HASP Failure
684	5/9/2009	Intertie	No LRA	RT	HASP Failure
685	5/9/2009	Intertie	No LRA	RT	HASP Failure
686	5/9/2009	Intertie	No LRA	RT	HASP Failure
687	5/10/2009	PGAE	Fresno	RT	Software Limitation
688	5/10/2009	PGAE	Fresno	RT	Software Limitation
689	5/10/2009	PGAE	Fresno	RT	Software Limitation
690	5/10/2009	PGAE	Fresno	RT	Software Limitation
691	5/10/2009	PGAE	Fresno	RT	Software Limitation
692	5/10/2009	PGAE	Fresno	RT	Software Limitation
693	5/10/2009	SDGE	San Diego	DA	Transmission Outage SDGE
694	5/10/2009	SDGE	San Diego	DA	Transmission Outage SDGE
695	5/10/2009	SCE	LA Basin	DA	Transmission Outage SDGE
696	5/10/2009	PGAE	Fresno	RT	Software Limitation
697	5/10/2009	SCE	LA Basin	DA	Transmission Outage SDGE
698	5/10/2009	SCE	LA Basin	DA	Transmission Outage SDGE
699	5/10/2009	SCE	LA Basin	DA	Transmission Outage SDGE
700	5/10/2009	SCE	LA Basin	DA	Transmission Outage SDGE

#	Date	Utility District	LR Area	Market	Reason
701	5/10/2009	SCE	LA Basin	DA	Transmission Outage SDGE
702	5/10/2009	SCE	BC/Ventura	DA	Transmission Outage SDGE
703	5/10/2009	PGAE	Sierra	RT	T-154
704	5/10/2009	PGAE	Sierra	RT	T-154
705	5/10/2009	PGAE	Sierra	RT	T-154
706	5/10/2009	PGAE	Humboldt	RT	T-138
707	5/10/2009	PGAE	Humboldt	RT	T-138
708	5/10/2009	Intertie	No LRA	RT	HASP Failure
709	5/10/2009	Intertie	No LRA	RT	HASP Failure
710	5/10/2009	Intertie	No LRA	RT	HASP Failure
711	5/10/2009	Intertie	No LRA	RT	HASP Failure
712	5/10/2009	Intertie	No LRA	RT	HASP Failure
713	5/10/2009	Intertie	No LRA	RT	HASP Failure
714	5/10/2009	Intertie	No LRA	RT	HASP Failure
715	5/10/2009	Intertie	No LRA	RT	HASP Failure
716	5/10/2009	Intertie	No LRA	RT	HASP Failure
717	5/11/2009	SCE	LA Basin	DA	Transmission Outage SDGE
718	5/11/2009	SCE	LA Basin	DA	Transmission Outage SDGE
719	5/11/2009	SCE	LA Basin	RT	Transmission Outage SDGE
720	5/11/2009	SDGE	San Diego	DA	Transmission Outage SDGE
721	5/11/2009	SDGE	San Diego	DA	Transmission Outage SDGE
722	5/11/2009	SCE	LA Basin	DA	Transmission Outage SDGE
723	5/11/2009	SCE	LA Basin	RT	Software Limitation
724	5/11/2009	SCE	LA Basin	DA	Transmission Outage SDGE
725	5/11/2009	SCE	LA Basin	RT	Software Limitation
726	5/11/2009	SCE	BC/Ventura	DA	Transmission Outage SDGE
727	5/11/2009	SCE	LA Basin	RT	G-217
728	5/11/2009	SCE	LA Basin	DA	Transmission Outage SDGE
729	5/11/2009	SCE	LA Basin	RT	G-217
730	5/11/2009	SCE	LA Basin	DA	Transmission Outage SDGE
731	5/11/2009	SCE	LA Basin	RT	System Capacity
732	5/11/2009	PGAE	Sierra	RT	Transmission Outage PGAE
733	5/11/2009	PGAE	Sierra	RT	Transmission Outage PGAE
734	5/11/2009	PGAE	Fresno	RT	Software Limitation
735	5/11/2009	PGAE	Fresno	RT	Software Limitation
736	5/11/2009	PGAE	Fresno	RT	Software Limitation
737	5/11/2009	PGAE	Fresno	RT	Software Limitation
738	5/11/2009	SCE	No LRA	RT	Software Limitation
739	5/11/2009	PGAE	Humboldt	RT	T-138
740	5/11/2009	PGAE	Humboldt	RT	T-138
741	5/11/2009	PGAE	Fresno	RT	Software Limitation
742	5/11/2009	PGAE	Fresno	RT	Software Limitation
743	5/11/2009	PGAE	Fresno	RT	Software Limitation
744	5/11/2009	PGAE	Fresno	RT	Software Limitation
745	5/11/2009	PGAE	Fresno	RT	Software Limitation
746	5/11/2009	PGAE	Fresno	RT	Software Limitation
747	5/11/2009	Intertie	No LRA	RT	System Energy

#	Date	Utility District	LR Area	Market	Reason
748	5/11/2009	Intertie	No LRA	RT	System Energy
749	5/11/2009	Intertie	No LRA	RT	System Energy
750	5/11/2009	Intertie	No LRA	RT	System Energy
751	5/11/2009	Intertie	No LRA	RT	System Energy
752	5/12/2009	SDGE	San Diego	DA	Transmission Outage SDGE
753	5/12/2009	SCE	LA Basin	DA	SP26 Capacity
754	5/12/2009	SCE	LA Basin	DA	SP26 Capacity
755	5/12/2009	SCE	LA Basin	DA	Transmission Outage SCE
756	5/12/2009	SCE	LA Basin	DA	Transmission Outage SCE
757	5/12/2009	PGAE	Sierra	RT	Transmission Outage PGAE
758	5/12/2009	PGAE	Fresno	RT	Software Limitation
759	5/12/2009	PGAE	Stockton	RT	Software Limitation
760	5/12/2009	SCE	LA Basin	RT	Software Limitation
761	5/12/2009	SCE	BC/Ventura	RT	Ramp Rate
762	5/12/2009	Intertie	No LRA	RT	HASP Failure
763	5/12/2009	Intertie	No LRA	RT	HASP Failure
764	5/12/2009	Intertie	No LRA	RT	HASP Failure
765	5/12/2009	Intertie	No LRA	RT	HASP Failure
766	5/12/2009	Intertie	No LRA	RT	HASP Failure
767	5/13/2009	SCE	LA Basin	DA	Transmission Outage SCE
768	5/13/2009	SDGE	San Diego	DA	Transmission Outage SDGE
769	5/13/2009	SCE	LA Basin	DA	Transmission Outage SCE
770	5/13/2009	SCE	LA Basin	DA	SP26 Capacity
771	5/13/2009	SCE	LA Basin	DA	SP26 Capacity
772	5/13/2009	SDGE	San Diego	DA	Transmission Outage SDGE
773	5/13/2009	PGAE	Fresno	RT	Software Limitation
774	5/13/2009	PGAE	Fresno	RT	Software Limitation
775	5/13/2009	PGAE	No LRA	RT	Transmission Outage PGAE
776	5/13/2009	PGAE	No LRA	RT	Transmission Outage PGAE
777	5/13/2009	SDGE	San Diego	RT	Unit Testing
778	5/14/2009	SDGE	San Diego	DA	Transmission Outage SDGE
779	5/14/2009	SCE	LA Basin	DA	Transmission Outage SCE
780	5/14/2009	SCE	LA Basin	DA	Transmission Outage SCE
781	5/14/2009	SCE	LA Basin	DA	Transmission Outage SCE
782	5/14/2009	SDGE	San Diego	DA	Transmission Outage SDGE
783	5/14/2009	SDGE	San Diego	DA	Transmission Outage SDGE
784	5/14/2009	SCE	LA Basin	DA	Transmission Outage SCE
785	5/14/2009	SCE	LA Basin	RT	SP26 Capacity
786	5/14/2009	SCE	LA Basin	RT	SP26 Capacity
787	5/14/2009	SCE	LA Basin	DA	Transmission Outage SCE
788	5/14/2009	SCE	LA Basin	DA	SP26 Capacity
789	5/14/2009	SCE	LA Basin	DA	SP26 Capacity
790	5/14/2009	SCE	LA Basin	DA	SP26 Capacity
791	5/14/2009	SCE	LA Basin	DA	SP26 Capacity
792	5/14/2009	PGAE	Fresno	RT	Software Limitation
793	5/14/2009	PGAE	Fresno	RT	Software Limitation
794	5/14/2009	PGAE	Fresno	RT	Software Limitation

#	Date	Utility District	LR Area	Market	Reason
795	5/14/2009	PGAE	Fresno	RT	Software Limitation
796	5/14/2009	SCE	LA Basin	RT	Unit Testing
797	5/14/2009	SCE	LA Basin	RT	Software Limitation
798	5/14/2009	PGAE	Bay Area	RT	Transmission Outage PGAE
799	5/14/2009	PGAE	Bay Area	RT	Transmission Outage PGAE
800	5/14/2009	PGAE	No LRA	RT	Transmission Outage PGAE
801	5/15/2009	SCE	LA Basin	DA	Transmission Outage SDGE
802	5/15/2009	SCE	LA Basin	DA	Transmission Outage SDGE
803	5/15/2009	SCE	LA Basin	DA	Transmission Outage SDGE
804	5/15/2009	SDGE	San Diego	DA	Transmission Outage SDGE
805	5/15/2009	SCE	LA Basin	DA	Transmission Outage SDGE
806	5/15/2009	SDGE	San Diego	DA	Transmission Outage SCE
807	5/15/2009	SCE	LA Basin	DA	SP26 Capacity
808	5/15/2009	SDGE	San Diego	DA	Transmission Outage SDGE
809	5/15/2009	SCE	LA Basin	DA	SP26 Capacity
810	5/15/2009	SDGE	San Diego	DA	Transmission Outage SDGE
811	5/15/2009	PGAE	No LRA	RT	Software Limitation
812	5/15/2009	Intertie	No LRA	RT	System Energy
813	5/15/2009	Intertie	No LRA	RT	System Energy
814	5/15/2009	Intertie	No LRA	RT	System Energy

**California Independent System Operator Corporation
Exception Dispatch Report
August 15, 2009**

Table 2: of Exceptional Dispatch Costs -- April 16 through May 15

#	Date	Utility District	LCR Area	CC 6470- Inc	CC 6470- Dec	CC 6488	CC 6482
1	4/16/2009	Intertie	No LRA	\$0.00	-\$100.40	\$0.00	\$0.00
2	4/16/2009	PGAE	Sierra	\$0.00	-\$293.21	\$0.00	\$0.00
3	4/16/2009	SDGE	San Diego	-\$22,783.14	\$0.00	\$0.00	\$0.00
4	4/16/2009	SCE	LA Basin	-\$28,256.93	\$0.00	\$0.00	\$0.00
5	4/16/2009	Intertie	No LRA	\$0.00	\$428.96	\$0.00	\$0.00
6	4/16/2009	Intertie	No LRA	\$0.00	\$1,698.06	\$0.00	\$0.00
7	4/16/2009	Intertie	No LRA	\$0.00	\$305.65	\$0.00	\$0.00
8	4/16/2009	Intertie	No LRA	\$0.00	\$267.92	\$0.00	\$0.00
9	4/16/2009	Intertie	No LRA	\$0.00	\$1,422.22	\$0.00	\$0.00
10	4/16/2009	Intertie	No LRA	\$0.00	-\$651.11	\$0.00	\$0.00
11	4/16/2009	Intertie	No LRA	\$0.00	\$2,012.77	\$0.00	\$0.00
12	4/16/2009	Intertie	No LRA	\$0.00	-\$650.55	\$0.00	\$0.00
13	4/16/2009	Intertie	No LRA	\$0.00	\$453.50	\$0.00	\$0.00
14	4/16/2009	Intertie	No LRA	\$0.00	\$333.86	\$0.00	\$0.00
15	4/16/2009	Intertie	No LRA	\$0.00	\$52.54	\$0.00	\$0.00
16	4/17/2009	SCE	LA Basin	-\$15,723.39	\$0.00	\$0.00	\$0.00
17	4/17/2009	SCE	LA Basin	-\$15,378.31	\$0.00	\$0.00	\$0.00
18	4/17/2009	SDGE	San Diego	-\$521.48	\$0.00	\$0.00	\$0.00
19	4/17/2009	SDGE	San Diego	\$0.00	\$0.00	\$0.00	\$0.00
20	4/17/2009	SDGE	San Diego	-\$15,436.62	\$0.00	-\$10,296.50	\$0.00
21	4/17/2009	SCE	LA Basin	-\$22,139.32	\$0.00	\$0.00	\$0.00
22	4/17/2009	PGAE	No LRA	\$0.00	\$34.72	\$0.00	\$0.00
23	4/17/2009	SCE	No LRA	\$0.00	\$5,337.40	\$0.00	\$0.00
24	4/17/2009	SDGE	San Diego	-\$16.10	\$0.00	\$0.00	\$0.00
25	4/17/2009	SDGE	San Diego	-\$7,159.92	\$0.00	\$0.00	\$0.00
26	4/17/2009	SDGE	San Diego	-\$6,448.16	\$0.00	\$0.00	\$0.00
27	4/17/2009	Intertie	No LRA	\$0.00	\$7,572.22	\$0.00	\$0.00
28	4/17/2009	Intertie	No LRA	\$0.00	\$1,038.05	\$0.00	\$0.00
29	4/17/2009	SCE	LA Basin	-\$33,048.32	\$0.00	\$0.00	\$0.00
30	4/17/2009	SCE	No LRA	\$0.00	\$310.57	\$0.00	\$0.00
31	4/18/2009	SCE	LA Basin	-\$13,040.33	\$0.00	\$0.00	\$0.00
32	4/18/2009	SCE	LA Basin	-\$9,795.33	\$0.00	\$0.00	\$0.00
33	4/18/2009	SDGE	San Diego	-\$18,487.51	\$0.00	\$0.00	\$0.00
34	4/19/2009	SDGE	San Diego	-\$2,748.26	\$0.00	\$0.00	\$0.00
35	4/19/2009	SCE	LA Basin	-\$13,345.46	\$0.00	\$0.00	\$0.00
36	4/19/2009	SCE	BC/Ventura	-\$57,831.63	\$0.00	\$0.00	\$0.00
37	4/20/2009	SCE	LA Basin	\$0.00	\$0.00	\$0.00	\$0.00
38	4/20/2009	Intertie	No LRA	\$0.00	\$33,683.67	\$0.00	\$0.00
39	4/20/2009	PGAE	Bay Area	\$0.00	-\$596.15	\$0.00	\$0.00
40	4/20/2009	SDGE	San Diego	-\$5,559.90	\$0.00	\$0.00	\$0.00
41	4/20/2009	SCE	LA Basin	-\$6,553.44	\$0.00	\$0.00	\$0.00

#	Date	Utility District	LCR Area	CC 6470- Inc	CC 6470- Dec	CC 6488	CC 6482
42	4/20/2009	SCE	BC/Ventura	-\$12,348.35	\$0.00	\$0.00	\$0.00
43	4/20/2009	SCE	BC/Ventura	-\$11,415.93	\$0.00	\$0.00	\$0.00
44	4/20/2009	SCE	BC/Ventura	-\$120,162.47	\$0.00	\$0.00	\$0.00
45	4/20/2009	SCE	BC/Ventura	-\$238,435.97	\$0.00	\$0.00	\$0.00
46	4/20/2009	PGAE	Bay Area	-\$239.38	\$0.00	\$0.00	\$0.00
47	4/20/2009	SCE	LA Basin	-\$59.52	\$0.00	\$0.00	\$0.00
48	4/20/2009	Intertie	No LRA	\$0.00	\$0.00	\$0.00	\$0.00
49	4/21/2009	SDGE	San Diego	-\$11,600.01	\$0.00	\$0.00	\$0.00
50	4/21/2009	SCE	LA Basin	-\$8,712.22	\$0.00	\$0.00	\$0.00
51	4/21/2009	PGAE	Sierra	\$0.00	\$0.00	\$0.00	\$0.00
52	4/21/2009	PGAE	Sierra	\$0.00	\$1,765.18	-\$1,747.65	\$0.00
53	4/21/2009	PGAE	Bay Area	-\$25,734.32	\$0.00	-\$4,325.56	\$0.00
54	4/21/2009	SCE	BC/Ventura	-\$3,946.61	\$0.00	\$0.00	\$0.00
55	4/21/2009	PGAE	Bay Area	-\$60,658.40	\$0.00	\$0.00	\$0.00
56	4/21/2009	SCE	BC/Ventura	-\$266,457.37	\$0.00	\$0.00	\$0.00
57	4/21/2009	PGAE	Sierra	\$0.00	\$0.00	\$0.00	\$0.00
58	4/21/2009	PGAE	Sierra	\$0.00	\$342.10	-\$338.93	\$0.00
59	4/21/2009	PGAE	Sierra	\$0.00	\$0.00	\$0.00	\$0.00
60	4/21/2009	PGAE	Sierra	\$0.00	\$2,223.21	-\$2,968.54	\$0.00
61	4/22/2009	SCE	LA Basin	-\$6,366.80	\$0.00	-\$3,556.41	\$0.00
62	4/22/2009	Intertie	No LRA	\$0.00	-\$700.00	\$0.00	\$0.00
63	4/22/2009	Intertie	No LRA	\$0.00	\$0.00	\$0.00	\$0.00
64	4/22/2009	Intertie	No LRA	\$0.00	\$0.00	\$0.00	\$0.00
65	4/22/2009	SDGE	San Diego	-\$769.95	\$0.00	-\$1,748.70	\$0.00
66	4/22/2009	PGAE	Sierra	\$0.00	\$2,376.59	-\$2,376.59	\$0.00
67	4/22/2009	PGAE	Bay Area	-\$35,377.77	\$0.00	-\$23,688.00	\$0.00
68	4/22/2009	Intertie	No LRA	\$0.00	\$0.00	\$0.00	\$0.00
69	4/22/2009	SCE	BC/Ventura	-\$180,722.18	\$0.00	\$0.00	\$0.00
70	4/22/2009	Intertie	No LRA	\$0.00	\$0.00	\$0.00	\$0.00
71	4/22/2009	PGAE	Sierra	\$0.00	\$681.92	-\$680.90	\$0.00
72	4/22/2009	Intertie	No LRA	\$0.00	\$0.00	\$0.00	\$0.00
73	4/22/2009	PGAE	Sierra	\$0.00	\$3,813.44	-\$3,576.99	\$0.00
74	4/23/2009	SCE	LA Basin	-\$6,668.88	\$0.00	\$0.00	\$0.00
75	4/23/2009	SCE	LA Basin	-\$56,851.20	\$0.00	\$0.00	\$0.00
76	4/23/2009	Intertie	No LRA	\$0.00	-\$74.78	\$0.00	\$0.00
77	4/23/2009	Intertie	No LRA	\$0.00	-\$1,834.61	\$0.00	\$0.00
78	4/23/2009	SCE	LA Basin	-\$18,903.54	\$0.00	\$0.00	\$0.00
79	4/23/2009	SCE	LA Basin	-\$11,180.62	\$0.00	\$0.00	\$0.00
80	4/23/2009	Intertie	No LRA	\$0.00	-\$303.98	\$0.00	\$0.00
81	4/23/2009	Intertie	No LRA	\$0.00	-\$295.33	\$0.00	\$0.00
82	4/23/2009	Intertie	No LRA	\$0.00	-\$194.86	\$0.00	\$0.00
83	4/23/2009	PGAE	NCNB	\$0.00	-\$272.40	\$0.00	\$0.00
84	4/23/2009	Intertie	No LRA	\$0.00	-\$393.80	\$0.00	\$0.00
85	4/23/2009	Intertie	No LRA	\$0.00	-\$389.47	\$0.00	\$0.00
86	4/23/2009	PGAE	NCNB	\$0.00	-\$668.96	\$0.00	\$0.00
87	4/23/2009	Intertie	No LRA	\$0.00	-\$226.75	\$0.00	\$0.00
88	4/23/2009	SCE	BC/Ventura	-\$10,922.25	\$0.00	\$0.00	\$0.00

#	Date	Utility District	LCR Area	CC 6470- Inc	CC 6470- Dec	CC 6488	CC 6482
89	4/23/2009	SCE	BC/Ventura	-\$7,922.59	\$0.00	\$0.00	\$0.00
90	4/23/2009	SCE	BC/Ventura	-\$102,710.58	\$0.00	\$0.00	\$0.00
91	4/23/2009	Intertie	No LRA	\$0.00	-\$1,826.02	\$0.00	\$0.00
92	4/23/2009	Intertie	No LRA	\$0.00	-\$4,151.54	\$0.00	\$0.00
93	4/23/2009	Intertie	No LRA	\$0.00	-\$13,599.33	\$0.00	\$0.00
94	4/23/2009	Intertie	No LRA	\$0.00	-\$66,365.82	\$0.00	\$0.00
95	4/23/2009	Intertie	No LRA	\$0.00	\$79.87	\$0.00	\$0.00
96	4/23/2009	Intertie	No LRA	\$0.00	-\$10,791.20	\$0.00	\$0.00
97	4/24/2009	SCE	LA Basin	-\$27,085.02	\$0.00	\$0.00	\$0.00
98	4/24/2009	SCE	LA Basin	-\$33,873.56	\$0.00	\$0.00	\$0.00
99	4/24/2009	SDGE	San Diego	-\$19,300.21	\$0.00	\$0.00	\$0.00
100	4/24/2009	SCE	LA Basin	-\$23,240.69	\$0.00	\$0.00	\$0.00
101	4/25/2009	SCE	LA Basin	-\$16,321.28	\$0.00	\$0.00	\$0.00
102	4/25/2009	Intertie	No LRA	\$0.00	\$4,960.48	\$0.00	\$0.00
103	4/25/2009	Intertie	No LRA	\$0.00	-\$734.00	\$0.00	\$0.00
104	4/25/2009	SDGE	San Diego	-\$8.54	\$0.00	\$0.00	\$0.00
105	4/25/2009	SCE	LA Basin	\$0.00	\$0.00	\$0.00	\$0.00
106	4/25/2009	PGAE	No LRA	\$0.00	\$1,398.27	-\$662.02	\$0.00
107	4/25/2009	PGAE	Humboldt	\$0.00	\$0.00	\$0.00	\$0.00
108	4/25/2009	PGAE	Humboldt	\$0.00	\$0.00	\$0.00	\$0.00
109	4/25/2009	PGAE	Humboldt	\$0.00	\$0.00	\$0.00	\$0.00
110	4/25/2009	PGAE	Bay Area	-\$2,934.61	\$0.00	\$0.00	\$0.00
111	4/25/2009	PGAE	Bay Area	-\$3,959.91	\$0.00	\$0.00	\$0.00
112	4/25/2009	Intertie	No LRA	\$0.00	-\$4,334.08	\$0.00	\$0.00
113	4/25/2009	PGAE	Bay Area	\$1,851.67	\$0.00	-\$12,814.44	\$0.00
114	4/25/2009	Intertie	No LRA	\$0.00	-\$1,454.03	\$0.00	\$0.00
115	4/26/2009	SCE	LA Basin	-\$2,612.33	\$0.00	\$0.00	\$0.00
116	4/26/2009	Intertie	No LRA	-\$128.08	\$0.00	\$0.00	\$0.00
117	4/26/2009	Intertie	No LRA	\$0.00	-\$500.00	\$0.00	\$0.00
118	4/26/2009	Intertie	No LRA	\$0.00	-\$297.00	\$0.00	\$0.00
119	4/26/2009	SDGE	San Diego	-\$11,074.14	\$0.00	\$0.00	\$0.00
120	4/26/2009	PGAE	No LRA	\$0.00	\$1,179.90	-\$218.58	\$0.00
121	4/26/2009	PGAE	Humboldt	-\$537.38	\$0.00	-\$2,811.95	\$0.00
122	4/26/2009	PGAE	Humboldt	-\$22.15	\$0.00	-\$15.80	\$0.00
123	4/26/2009	PGAE	Bay Area	-\$1,850.67	\$0.00	\$0.00	\$0.00
124	4/26/2009	PGAE	Bay Area	-\$1,158.02	\$0.00	\$0.00	\$0.00
125	4/26/2009	Intertie	No LRA	\$0.00	\$0.50	\$0.00	\$0.00
126	4/26/2009	Intertie	No LRA	\$0.00	-\$250.00	\$0.00	\$0.00
127	4/26/2009	Intertie	No LRA	\$0.00	\$8,408.48	\$0.00	\$0.00
128	4/27/2009	SCE	LA Basin	-\$20,565.94	\$0.00	\$0.00	\$0.00
129	4/27/2009	SDGE	San Diego	-\$14,251.76	\$0.00	\$0.00	\$0.00
130	4/27/2009	SCE	LA Basin	-\$4,081.96	\$0.00	\$0.00	\$0.00
131	4/27/2009	PGAE	No LRA	\$0.00	\$0.00	\$0.00	\$0.00
132	4/27/2009	PGAE	No LRA	\$0.00	\$5,058.52	-\$655.13	\$0.00
133	4/27/2009	PGAE	Humboldt	-\$651.09	\$0.00	-\$3,577.87	\$0.00
134	4/27/2009	PGAE	Humboldt	-\$1,794.41	\$0.00	\$0.00	\$0.00
135	4/27/2009	PGAE	Humboldt	-\$2,511.27	\$0.00	\$0.00	\$0.00

#	Date	Utility District	LCR Area	CC 6470- Inc	CC 6470- Dec	CC 6488	CC 6482
136	4/27/2009	SCE	BC/Ventura	-\$21,896.89	\$0.00	\$0.00	\$0.00
137	4/27/2009	SCE	BC/Ventura	-\$72.04	\$0.00	\$0.00	\$0.00
138	4/27/2009	PGAE	Bay Area	-\$3,044.36	\$0.00	\$0.00	\$0.00
139	4/27/2009	Intertie	No LRA	\$0.00	-\$2,128.90	\$0.00	\$0.00
140	4/27/2009	Intertie	No LRA	\$0.00	-\$2,632.48	\$0.00	\$0.00
141	4/28/2009	SCE	LA Basin	-\$7,788.66	\$0.00	\$0.00	\$0.00
142	4/28/2009	Intertie	No LRA	\$0.00	-\$6,180.03	\$0.00	\$0.00
143	4/28/2009	Intertie	No LRA	\$0.00	-\$6,211.77	\$0.00	\$0.00
144	4/28/2009	Intertie	No LRA	\$0.00	-\$5,894.62	\$0.00	\$0.00
145	4/28/2009	PGAE	Sierra	-\$15,438.59	\$0.00	\$0.00	\$0.00
146	4/28/2009	Intertie	No LRA	-\$410.87	\$0.00	\$0.00	\$0.00
147	4/28/2009	Intertie	No LRA	\$0.00	\$0.00	\$0.00	\$0.00
148	4/28/2009	Intertie	No LRA	\$0.00	\$0.00	\$0.00	\$0.00
149	4/28/2009	Intertie	No LRA	\$0.00	-\$751.79	\$0.00	\$0.00
150	4/28/2009	PGAE	Sierra	\$0.00	\$7,990.76	-\$6,942.46	\$0.00
151	4/28/2009	PGAE	Sierra	\$0.00	\$0.32	\$0.00	\$0.00
152	4/28/2009	PGAE	Stockton	\$0.00	\$18.02	\$0.00	\$0.00
153	4/28/2009	SCE	LA Basin	\$0.00	-\$1,173.70	\$0.00	\$0.00
154	4/28/2009	SDGE	San Diego	-\$8,496.61	\$0.00	\$0.00	\$0.00
155	4/28/2009	SCE	LA Basin	-\$5,324.67	\$0.00	\$0.00	\$0.00
156	4/28/2009	PGAE	No LRA	\$0.00	\$0.00	\$0.00	\$0.00
157	4/28/2009	PGAE	No LRA	\$0.00	\$71,927.89	-\$83,829.78	\$0.00
158	4/28/2009	PGAE	Humboldt	-\$4,579.01	\$0.00	\$0.00	\$0.00
159	4/28/2009	PGAE	Humboldt	\$0.00	\$0.00	\$0.00	\$0.00
160	4/28/2009	PGAE	Humboldt	-\$757.84	\$0.00	-\$1,468.70	\$0.00
161	4/28/2009	PGAE	Humboldt	-\$2,882.75	\$0.00	\$0.00	\$0.00
162	4/28/2009	PGAE	Humboldt	\$0.00	\$0.00	\$0.00	\$0.00
163	4/28/2009	PGAE	Humboldt	-\$786.91	\$0.00	-\$449.96	\$0.00
164	4/28/2009	PGAE	Humboldt	-\$4,818.07	\$0.00	\$0.00	\$0.00
165	4/28/2009	PGAE	Humboldt	\$0.00	\$0.00	\$0.00	\$0.00
166	4/28/2009	PGAE	Humboldt	-\$564.97	\$0.00	-\$312.65	\$0.00
167	4/28/2009	SCE	BC/Ventura	-\$25,110.86	\$0.00	\$0.00	\$0.00
168	4/28/2009	SCE	BC/Ventura	-\$21,279.53	\$0.00	\$0.00	\$0.00
169	4/28/2009	Intertie	No LRA	\$0.00	-\$2,259.95	\$0.00	\$0.00
170	4/28/2009	Intertie	No LRA	\$0.00	-\$776.47	\$0.00	\$0.00
171	4/28/2009	PGAE	Bay Area	-\$6,406.66	\$0.00	\$0.00	\$0.00
172	4/28/2009	Intertie	No LRA	\$0.00	\$5,969.31	\$0.00	\$0.00
173	4/28/2009	Intertie	No LRA	\$0.00	-\$3,105.88	\$0.00	\$0.00
174	4/28/2009	PGAE	Sierra	-\$2,222.61	\$0.00	\$0.00	\$0.00
175	4/28/2009	PGAE	Sierra	-\$2,222.61	\$0.00	\$0.00	\$0.00
176	4/28/2009	Intertie	No LRA	\$0.00	-\$31.97	\$0.00	\$0.00
177	4/29/2009	SCE	LA Basin	-\$30,161.85	\$0.00	\$0.00	\$0.00
178	4/29/2009	PGAE	Fresno	\$0.00	-\$16.19	\$0.00	\$0.00
179	4/29/2009	PGAE	Fresno	\$0.00	-\$266.23	\$0.00	\$0.00
180	4/29/2009	PGAE	Sierra	\$0.00	\$0.00	\$0.00	\$0.00
181	4/29/2009	PGAE	Sierra	\$0.00	\$1,376.27	-\$1,327.21	\$0.00
182	4/29/2009	PGAE	Sierra	\$0.00	\$0.00	\$0.00	\$0.00

#	Date	Utility District	LCR Area	CC 6470- Inc	CC 6470- Dec	CC 6488	CC 6482
183	4/29/2009	PGAE	Sierra	\$0.00	\$14,778.14	-\$14,981.88	\$0.00
184	4/29/2009	SCE	LA Basin	-\$7,343.66	\$0.00	\$0.00	\$0.00
185	4/29/2009	PGAE	Humboldt	\$0.00	\$0.00	\$0.00	\$0.00
186	4/29/2009	PGAE	Humboldt	-\$534.33	\$0.00	-\$2,933.40	\$0.00
187	4/29/2009	PGAE	Humboldt	-\$398.69	\$0.00	-\$3,207.52	\$0.00
188	4/29/2009	PGAE	Humboldt	\$0.00	\$0.00	\$0.00	\$0.00
189	4/29/2009	PGAE	Humboldt	-\$217.36	\$0.00	-\$212.22	\$0.00
190	4/29/2009	PGAE	Humboldt	\$0.00	\$0.00	\$0.00	\$0.00
191	4/29/2009	PGAE	Humboldt	-\$170.37	\$0.00	-\$195.37	\$0.00
192	4/29/2009	PGAE	Fresno	\$0.00	-\$375.36	\$0.00	\$0.00
193	4/29/2009	SCE	BC/Ventura	-\$32,229.29	\$0.00	\$0.00	\$0.00
194	4/29/2009	SCE	BC/Ventura	-\$30,218.80	\$0.00	\$0.00	\$0.00
195	4/29/2009	PGAE	Bay Area	-\$3,679.48	\$0.00	\$0.00	\$0.00
196	4/30/2009	SCE	LA Basin	-\$6,042.96	\$0.00	\$0.00	\$0.00
197	4/30/2009	SCE	BC/Ventura	\$0.00	\$0.00	\$0.00	\$0.00
198	4/30/2009	PGAE	Sierra	\$0.00	\$0.06	\$0.00	\$0.00
199	4/30/2009	PGAE	Sierra	\$0.00	-\$113.80	\$0.00	\$0.00
200	4/30/2009	PGAE	Sierra	\$0.00	\$149.63	-\$98.73	\$0.00
201	4/30/2009	SCE	LA Basin	-\$10,985.78	\$0.00	\$0.00	\$0.00
202	4/30/2009	PGAE	Humboldt	\$0.00	\$0.00	\$0.00	\$0.00
203	4/30/2009	PGAE	Humboldt	-\$2,057.12	\$0.00	\$0.00	\$0.00
204	4/30/2009	PGAE	Humboldt	\$0.00	\$0.00	\$0.00	\$0.00
205	4/30/2009	PGAE	Humboldt	-\$553.54	\$0.00	-\$131.13	\$0.00
206	4/30/2009	PGAE	Humboldt	\$0.00	\$0.00	\$0.00	\$0.00
207	4/30/2009	PGAE	Humboldt	-\$2,229.50	\$0.00	-\$813.50	\$0.00
208	4/30/2009	SCE	BC/Ventura	-\$34,587.10	\$0.00	\$0.00	\$0.00
209	4/30/2009	SCE	BC/Ventura	-\$31,902.06	\$0.00	\$0.00	\$0.00
210	5/1/2009	SCE	LA Basin	-\$7,622.64	\$0.00	\$0.00	\$0.00
211	5/1/2009	Intertie	No LRA	\$0.00	\$5,320.02	\$0.00	\$0.00
212	5/1/2009	Intertie	No LRA	\$0.00	\$5,089.15	\$0.00	\$0.00
213	5/1/2009	Intertie	No LRA	\$0.00	\$2,619.60	\$0.00	\$0.00
214	5/1/2009	SDGE	San Diego	-\$6,094.23	\$0.00	\$0.00	\$0.00
215	5/1/2009	SCE	LA Basin	-\$7,289.62	\$0.00	\$0.00	\$0.00
216	5/1/2009	SCE	BC/Ventura	-\$11,077.04	\$0.00	\$0.00	\$0.00
217	5/1/2009	SCE	BC/Ventura	-\$10,730.49	\$0.00	\$0.00	\$0.00
218	5/1/2009	SCE	LA Basin	-\$0.01	\$0.00	\$0.00	\$0.00
219	5/1/2009	Intertie	No LRA	\$0.00	\$29.18	\$0.00	\$0.00
220	5/2/2009	SCE	LA Basin	-\$2,369.34	\$0.00	\$0.00	\$0.00
221	5/2/2009	Intertie	No LRA	\$0.00	\$1,200.00	\$0.00	\$0.00
222	5/2/2009	Intertie	No LRA	\$0.00	\$1,200.00	\$0.00	\$0.00
223	5/2/2009	SCE	LA Basin	-\$121.84	\$0.00	\$0.00	\$0.00
224	5/2/2009	PGAE	Humboldt	-\$173.19	\$0.00	-\$162.23	\$0.00
225	5/2/2009	SCE	BC/Ventura	-\$15,097.86	\$0.00	\$0.00	\$0.00
226	5/2/2009	PGAE	Fresno	\$0.00	\$0.00	\$0.00	\$0.00
227	5/2/2009	Intertie	No LRA	\$0.00	\$5,328.55	\$0.00	\$0.00
228	5/2/2009	Intertie	No LRA	\$0.00	\$900.45	\$0.00	\$0.00
229	5/2/2009	Intertie	No LRA	\$0.00	-\$43.37	-\$79.35	\$0.00

#	Date	Utility District	LCR Area	CC 6470- Inc	CC 6470- Dec	CC 6488	CC 6482
230	5/3/2009	SCE	LA Basin	-\$70.11	\$0.00	\$0.00	\$0.00
231	5/3/2009	SDGE	San Diego	-\$1,153.58	\$0.00	\$0.00	\$0.00
232	5/3/2009	SCE	LA Basin	-\$3,677.99	\$0.00	\$0.00	\$0.00
233	5/3/2009	SCE	BC/Ventura	\$0.00	\$216.22	\$0.00	\$0.00
234	5/4/2009	SCE	LA Basin	-\$2,603.36	\$0.00	\$0.00	\$0.00
235	5/4/2009	SCE	LA Basin	-\$33,019.88	\$0.00	\$0.00	\$0.00
236	5/4/2009	SDGE	San Diego	\$0.00	\$0.00	\$0.00	\$0.00
237	5/4/2009	SDGE	San Diego	-\$4,319.18	\$0.00	-\$1,605.60	\$0.00
238	5/4/2009	SCE	LA Basin	-\$2,652.47	\$0.00	\$0.00	\$0.00
239	5/4/2009	PGAE	Humboldt	\$0.00	\$0.00	\$0.00	\$0.00
240	5/4/2009	PGAE	Humboldt	-\$589.37	\$0.00	-\$2,176.20	\$0.00
241	5/4/2009	SCE	BC/Ventura	\$0.00	\$0.00	\$0.00	\$0.00
242	5/4/2009	SCE	BC/Ventura	-\$9,919.73	\$0.00	-\$10,293.47	\$0.00
243	5/4/2009	SCE	BC/Ventura	\$0.00	\$0.00	\$0.00	\$0.00
244	5/4/2009	SCE	BC/Ventura	-\$9,946.69	\$0.00	-\$9,983.25	\$0.00
245	5/4/2009	SDGE	San Diego	\$0.00	\$1,864.99	\$0.00	\$0.00
246	5/5/2009	Intertie	No LRA	\$0.00	-\$935.26	\$0.00	\$0.00
247	5/5/2009	Intertie	No LRA	\$0.00	-\$474.28	\$0.00	\$0.00
248	5/5/2009	Intertie	No LRA	\$0.00	-\$11.20	\$0.00	\$0.00
249	5/5/2009	Intertie	No LRA	\$0.00	-\$195.11	\$0.00	\$0.00
250	5/5/2009	Intertie	No LRA	\$0.00	\$0.00	\$0.00	\$0.00
251	5/5/2009	SCE	LA Basin	-\$11,299.35	\$0.00	\$0.00	\$0.00
252	5/5/2009	Intertie	No LRA	\$0.00	-\$134.08	\$0.00	\$0.00
253	5/5/2009	SCE	LA Basin	-\$4,103.30	\$0.00	\$0.00	\$0.00
254	5/5/2009	Intertie	No LRA	\$0.00	-\$1,520.82	\$0.00	\$0.00
255	5/5/2009	Intertie	No LRA	\$0.00	-\$231.10	\$0.00	\$0.00
256	5/5/2009	Intertie	No LRA	\$0.00	-\$231.10	\$0.00	\$0.00
257	5/5/2009	Intertie	No LRA	\$0.00	-\$1,667.99	\$0.00	\$0.00
258	5/5/2009	Intertie	No LRA	\$0.00	-\$294.20	\$0.00	\$0.00
259	5/5/2009	Intertie	No LRA	\$0.00	-\$41.77	\$0.00	\$0.00
260	5/5/2009	Intertie	No LRA	\$0.00	-\$4.80	\$0.00	\$0.00
261	5/6/2009	Intertie	No LRA	\$0.00	\$0.00	\$0.00	\$0.00
262	5/6/2009	Intertie	No LRA	\$0.00	\$0.00	\$0.00	\$0.00
263	5/6/2009	SDGE	San Diego	\$0.00	\$0.00	\$0.00	\$0.00
264	5/6/2009	SDGE	San Diego	-\$3,115.72	\$0.00	-\$351.01	\$0.00
265	5/6/2009	Intertie	No LRA	\$0.00	\$0.00	\$0.00	\$0.00
266	5/6/2009	Intertie	No LRA	\$0.00	\$0.00	\$0.00	\$0.00
267	5/6/2009	Intertie	No LRA	\$0.00	\$0.00	\$0.00	\$0.00
268	5/6/2009	Intertie	No LRA	\$0.00	\$0.00	\$0.00	\$0.00
269	5/6/2009	Intertie	No LRA	-\$505.34	\$0.00	-\$7,144.84	\$0.00
270	5/7/2009	SCE	LA Basin	-\$19,890.23	\$0.00	\$0.00	\$0.00
271	5/7/2009	SCE	LA Basin	-\$24.46	\$0.00	\$0.00	\$0.00
272	5/7/2009	SDGE	San Diego	\$0.00	\$0.00	\$0.00	\$0.00
273	5/7/2009	SDGE	San Diego	-\$4,327.82	\$0.00	-\$1,055.59	\$0.00
274	5/8/2009	PGAE	Sierra	\$0.00	-\$408.13	\$0.00	\$0.00
275	5/8/2009	SCE	No LRA	\$0.00	\$252.90	\$0.00	\$0.00
276	5/8/2009	Intertie	No LRA	\$0.00	\$167.57	\$0.00	\$0.00

#	Date	Utility District	LCR Area	CC 6470- Inc	CC 6470- Dec	CC 6488	CC 6482
277	5/8/2009	Intertie	No LRA	-\$14.73	\$0.00	\$0.00	\$0.00
278	5/9/2009	Intertie	No LRA	\$0.00	-\$2,167.48	\$0.00	\$0.00
279	5/9/2009	Intertie	No LRA	\$0.00	\$7,146.65	\$0.00	\$0.00
280	5/9/2009	PGAE	Sierra	\$0.00	-\$658.74	\$0.00	\$0.00
281	5/9/2009	Intertie	No LRA	\$0.00	\$0.00	\$0.00	\$0.00
282	5/9/2009	Intertie	No LRA	-\$436.81	\$0.00	\$0.00	\$0.00
283	5/9/2009	Intertie	No LRA	-\$15,435.88	\$0.00	\$0.00	\$0.00
284	5/9/2009	Intertie	No LRA	\$0.00	-\$4,334.96	\$0.00	\$0.00
285	5/9/2009	Intertie	No LRA	\$0.00	\$1,304.55	\$0.00	\$0.00
286	5/9/2009	Intertie	No LRA	-\$4,912.74	\$0.00	\$0.00	\$0.00
287	5/9/2009	Intertie	No LRA	\$0.00	\$0.00	\$0.00	\$0.00
288	5/9/2009	Intertie	No LRA	\$0.00	-\$996.82	\$0.00	\$0.00
289	5/9/2009	Intertie	No LRA	\$0.00	\$0.00	\$0.00	\$0.00
290	5/9/2009	Intertie	No LRA	-\$163.80	\$0.00	\$0.00	\$0.00
291	5/9/2009	Intertie	No LRA	\$0.00	\$0.00	\$0.00	\$0.00
292	5/10/2009	Intertie	No LRA	\$0.00	\$8,996.60	\$0.00	\$0.00
293	5/10/2009	Intertie	No LRA	\$0.00	\$9,678.68	\$0.00	\$0.00
294	5/10/2009	Intertie	No LRA	\$0.00	\$0.00	\$0.00	\$0.00
295	5/10/2009	PGAE	Sierra	\$0.00	\$0.00	\$0.00	\$0.00
296	5/10/2009	PGAE	Sierra	\$0.00	\$1,015.25	-\$1,015.06	\$0.00
297	5/10/2009	PGAE	Sierra	\$0.00	\$104.38	-\$78.56	\$0.00
298	5/10/2009	Intertie	No LRA	-\$31.74	\$0.00	\$0.00	\$0.00
299	5/10/2009	Intertie	No LRA	\$0.00	\$0.00	\$0.00	\$0.00
300	5/10/2009	PGAE	Humboldt	\$0.00	\$0.00	\$0.00	\$0.00
301	5/10/2009	PGAE	Humboldt	\$0.00	\$1,591.53	-\$1,589.78	\$0.00
302	5/10/2009	PGAE	Humboldt	\$0.00	\$0.00	\$0.00	\$0.00
303	5/10/2009	PGAE	Humboldt	\$0.00	\$1,591.54	-\$1,497.13	\$0.00
304	5/10/2009	Intertie	No LRA	\$0.00	\$0.00	\$0.00	\$0.00
305	5/10/2009	Intertie	No LRA	-\$316.98	\$0.00	\$0.00	\$0.00
306	5/10/2009	Intertie	No LRA	-\$1,260.14	\$0.00	\$0.00	\$0.00
307	5/11/2009	Intertie	No LRA	-\$9,860.01	\$0.00	\$0.00	\$166.67
308	5/11/2009	Intertie	No LRA	\$0.00	\$1,600.00	\$0.00	\$0.00
309	5/11/2009	PGAE	Sierra	\$0.00	\$0.00	\$0.00	\$0.00
310	5/11/2009	PGAE	Sierra	\$0.00	\$1,015.69	-\$1,425.58	\$0.00
311	5/11/2009	PGAE	Humboldt	\$0.00	\$0.00	\$0.00	\$0.00
312	5/11/2009	PGAE	Humboldt	\$0.00	\$819.53	-\$809.08	\$0.00
313	5/11/2009	PGAE	Humboldt	\$0.00	\$0.00	\$0.00	\$0.00
314	5/11/2009	PGAE	Humboldt	\$0.00	\$646.34	-\$609.24	\$0.00
315	5/11/2009	Intertie	No LRA	\$0.00	\$370.00	\$0.00	\$0.00
316	5/11/2009	Intertie	No LRA	\$0.00	\$1,350.00	\$0.00	\$0.00
317	5/11/2009	Intertie	No LRA	\$0.00	\$1,075.00	\$0.00	\$0.00
318	5/12/2009	PGAE	Sierra	\$0.00	\$0.00	\$0.00	\$0.00
319	5/12/2009	PGAE	Sierra	\$0.00	\$6,182.91	-\$6,584.37	\$0.00
320	5/12/2009	Intertie	No LRA	\$0.00	-\$32.10	\$0.00	\$0.00
321	5/12/2009	SCE	BC/Ventura	-\$3,229.47	\$0.00	\$0.00	\$0.00
322	5/13/2009	PGAE	No LRA	\$0.00	\$0.00	\$0.00	\$0.00
323	5/13/2009	PGAE	No LRA	\$0.00	\$5,520.38	-\$1,161.44	\$0.00

#	Date	Utility District	LCR Area	CC 6470- Inc	CC 6470- Dec	CC 6488	CC 6482
324	5/14/2009	Intertie	No LRA	\$0.00	\$0.00	\$0.00	\$0.00
325	5/14/2009	PGAE	No LRA	\$0.00	\$7,297.11	-\$1,169.18	\$0.00
326	5/15/2009	Intertie	No LRA	\$0.00	\$975.00	\$0.00	\$0.00
327	5/15/2009	Intertie	No LRA	\$0.00	\$1,900.00	\$0.00	\$0.00
328	5/15/2009	Intertie	No LRA	\$0.00	\$950.00	\$0.00	\$0.00
			Net Total	-\$486,222.16	\$164,275.50	-\$165,695.46	\$166.67



California ISO
Your Link to Power

Market Disruption Report June 16 to July 15, 2009

August 17, 2009

ISO Market Services

CAISO
151 Blue Ravine Road
Folsom, California 95630
(916) 351-4400

I. Background

A Market Disruption is an action or event that causes a failure of a CAISO Market, related to system operation issues or System Emergencies.¹ Pursuant to Section 7.7.15 of the CAISO Tariff, the ISO can take one or more of a number of specified actions in the event of a Market Disruption, to prevent a Market Disruption, or to minimize the extent of a Market Disruption. The ISO interprets this to mean that a Market Disruption occurs and the ISO is obligated to report its occurrence in any of the following circumstances:

- When any of the ISO market processes fail to publish, including the Integrated Forward Market (“IFM”), Residual Unit Commitment (“RUC”), Hour-Ahead Scheduling Process (“HASP”), Real-Time Pre-Dispatch (“RTPD”), or Real-Time Dispatch (“RTD”) processes;
- When the ISO manually overrides the closing of the Day-Ahead Market; or
- Any time that the ISO removes Bids from a CAISO Market to prevent a Market Disruption or to minimize the extent of a Market Disruption.

The Market Disruption report contains the following information:

- The frequency and types of actions taken by the ISO pursuant to Section 7.7.15;
- The nature of the Market Disruptions that caused the ISO to take action, or the Market Disruptions that were successfully prevented or minimized by the ISO as a result of taking action, and the ISO’s rationale for taking such actions pursuant to Section 7.7.15;
- Information about the Bids (including Self-Schedules) removed pursuant to Section 7.7.15 (*i.e.* megawatt quantity, point of interconnection, specification of the Day-Ahead versus Real-Time Bid, and Energy or Ancillary Services Bid); and
- The ISO’s rationale for its removal of Bids (including Self-Schedules) pursuant to Section 7.7.15.²

II. Report on Market Disruptions Occurring from June 16 through July 15, 2009

The ISO’s report on Market Disruptions that occurred during the time period from June 16 through July 15, 2009, is provided in Table 1 and Attachment A, below. As required by the March 9 Order and Section 7.7.15.4 of

¹ These system operation issues or System Emergencies are referred to in Sections 7.6 and 7.7, respectively, of the CAISO Tariff. CAISO Tariff, Appendix A, definition of Market Disruption. Capitalized terms not otherwise defined herein have the meanings set forth in the CAISO Tariff.

² *Id.* at P 29 & n.29.

the CAISO Tariff, the report details the frequency of the Market Disruptions as well as the types of actions taken by the ISO pursuant to Section 7.7.15 of the CAISO Tariff. In addition, the report catalogs the nature of the Market Disruptions and the rationale for any actions taken. The report also includes information about any Bids (including Self-Schedules) removed as a result of a Market Disruption pursuant to Section 7.7.15, and the rationale for their removal.

Attachment A includes an entry for each reportable Market Disruption event that occurred from June 16 through July 15, 2009. Each entry also indicates:

- (1) the date of the Market Disruption;
- (2) the hour and Dispatch Interval when the Market Disruption ended;
- (3) the type of CAISO Market in which the Market Disruption occurred; and
- (4) a description of the nature of the Market Disruption, the nature of any actions taken by the ISO, the rationale for such actions, and the Market Disruption prevented or minimized as a result of taking such actions.

Table 1 lists, for each type of CAISO Market, the number of Market Disruptions and the number of times that the ISO removed Bids (including Self-Schedules) during the time period covered by this report. As shown in Table 1, there were a total of 35 Market Disruptions for the reporting period, significantly lower than the 65 Market Disruptions listed in the July 2009 Report. Table 1 also indicates that the ISO did not remove any Bids (including Self-Schedules) during the reporting period.

Table 1 and Attachment A indicate that there were 28 total instances of RTPD failure, including 3 HASP failures. The count of RTPD failures decreased by nine and the count of HASP failures decreased by eleven compared with the July 2009 Report. Most of the RTPD failures were due to the software application not running or the software application timing out. The RTPD failures (including HASP failures) accounted for approximately 82 percent of all of the Market Disruptions during this reporting period.

The number of RTD failures also dropped significantly to 6 from the 28 such instances listed in the July 2009 Report. On average there was approximately one RTD failure every five days. Three out of the six RTD failures occurred in the same hour on June 22nd because RTD did not run.

On June 21, the Market Power Mitigation (MPM) run of the Day-Ahead Market failed repeatedly. Operators were able to identify two specific units that were causing the problem due to improperly modeled ramping constraints. The ramping constraints flag was not enforced for all units in MPM. In addition, in the

IFM and RUC, the IFM and RUC resource pool market setting was modified from MPM Only to ALL thereby expanding the pool of resources to those resources beyond those mitigated through the MPM. The ramping constraints flag was enforced for IFM and RUC. By taking these actions the ISO was able to avert a total failure of the IFM. The problem with the ramping constraints of these two units has since been corrected and the problem has not reoccurred.

Table 1: Summary of Market Disruption Report

Type of CAISO Market	Market Disruption or Reportable Events	Removal of Bids (including Self-Schedules)
Day-Ahead		
IFM	1	0
RUC	0	0
Real-Time		
Real-Time Pre-Dispatch Interval 1	5	0
Real-Time Pre-Dispatch Interval 2	3	0
Real-Time Pre-Dispatch Interval 3	14	0
Real-Time Pre-Dispatch Interval 4	6	0
Real-Time Dispatch	6	0

ATTACHMENT A

**California Independent System Operator Corporation
Market Disruption Report
August 17, 2009**

Table 1: Market Disruptions, Nature of Actions Taken by the California ISO, Rationale and/or Market Disruption Prevented or Minimized as a Result of such Actions

Count	Date	Hour	Interval	Market	Nature of Actions, Nature of Market Disruption, Rationale and/or Market Disruption Prevented or Minimized as a Result of such Actions
1	6/16/2009	1	3	RTPD	RTPD did not run. This interval was filled either automatically or interactively. MQS published PNode clearing and resource awards for this interval.
2	6/17/2009	11	9	RTD	RTD application timed out. Loss clearing payload and LMP filled in with last good interval.
3	6/18/2009	7	2	HASP	HASP failed due to missing bids. Market Disruption was limited to one interval. ISO issued a notice through the Market Notification System instructing resources to follow Day-Ahead Schedules and Awards for interties. This interval was filled either automatically or interactively. MQS published PNode clearing and resource awards for this interval. Any incremental or decremental Real-Time Energy at the interties beyond the Day-Ahead Schedules that was not dispatched by the ISO is treated as an Operational Adjustment (Tier 2) for Settlement purposes.
4	6/18/2009	7	3	RTPD	RTPD did not run. This interval was filled either automatically or interactively. MQS published PNode clearing and resource awards for this interval.
5	6/18/2009	7	4	RTPD	RTPD timed out. This interval was filled either automatically or interactively. MQS published PNode clearing and resource awards for this interval.
6	6/18/2009	8	1	RTPD	RTPD did not run. This interval was filled either automatically or interactively. MQS published PNode clearing and resource awards for this interval.

Count	Date	Hour	Interval	Market	Nature of Actions, Nature of Market Disruption, Rationale and/or Market Disruption Prevented or Minimized as a Result of such Actions
7	6/18/2009	8	3	RTPD	RTPD failed due to missing bids. This interval was filled either automatically or interactively. MQS published PNode clearing and resource awards for this interval.
8	6/22/2009			DAM	One June 21, the Market Power Mitigation (MPM) run of the Day-Ahead Market failed repeatedly. Operators were able to identify two specific units that were causing the problem due to improperly modeled ramping constraints. The ramping constraints flag was not enforced for all units in MPM. In addition, in the IFM and RUC, the IFM and RUC resource pool market setting was modified from MPM Only to ALL thereby expanding the pool of resources to beyond resources mitigated through the MPM. The ramping constraints flag was enforced for IFM and RUC. By taking these actions the ISO was able to avert a total failure of the IFM. The problem with the ramping constraints of these two units has since been corrected and the problem has not reoccurred.
9	6/22/2009	24	9	RTD	RTD did not run. Loss clearing payload and LMP filled from last good interval.
10	6/22/2009	24	10	RTD	RTD did not run. Loss clearing payload and LMP filled from last good interval.
11	6/22/2009	24	11	RTD	RTD did not run. Loss clearing payload and LMP filled from last good interval.
12	6/24/2009	24	4	RTPD	RTPD did not run. This interval was filled either automatically or interactively. MQS published PNode clearing and resource awards for this interval.
13	6/25/2009	1	1	RTD	RTD did not run. Loss clearing payload and LMP filled from last good interval.
14	6/25/2009	1	1	RTPD	RTPD did not run. This interval was filled either automatically or interactively. MQS published PNode clearing and resource awards for this interval.
15	6/25/2009	1	2	HASP	HASP did not run. Market Disruption was limited to one interval. ISO issued a notice through the Market Notification System instructing resources to follow Day-Ahead Schedules and Awards for interties. This interval was filled either automatically or interactively. MQS published PNode clearing and resource awards for this interval. Any incremental or decremental Real-Time Energy at the interties beyond the Day-Ahead Schedules that was not dispatched by the ISO is treated as an Operational Adjustment (Tier 2) for Settlement purposes.

Count	Date	Hour	Interval	Market	Nature of Actions, Nature of Market Disruption, Rationale and/or Market Disruption Prevented or Minimized as a Result of such Actions
16	6/25/2009	23	3	RTPD	RTPD failed. This interval was filled either automatically or interactively. MQS published PNode clearing and resource awards for this interval.
17	6/26/2009	16	3	RTPD	RTPD timed out. This interval was filled either automatically or interactively. MQS published PNode clearing and resource awards for this interval.
18	6/26/2009	19	3	RTPD	RTPD timed out. This interval was filled either automatically or interactively. MQS published PNode clearing and resource awards for this interval.
19	6/27/2009	16	3	RTPD	RTPD failed. This interval was filled either automatically or interactively. MQS published PNode clearing and resource awards for this interval.
20	6/30/2009	16	8	RTD	RTD did not run. Loss clearing payload and LMP filled from last good interval.
21	6/30/2009	19	3	RTPD	RTPD timed out. This interval was filled either automatically or interactively. MQS published PNode clearing and resource awards for this interval.
22	7/3/2009	14	4	RTPD	RTPD did not run. This interval was filled either automatically or interactively. MQS published PNode clearing and resource awards for this interval.
23	7/3/2009	15	1	RTPD	RTPD did not run. This interval was filled either automatically or interactively. MQS published PNode clearing and resource awards for this interval.
24	7/6/2009	13	4	RTPD	RTPD timed out. This interval was filled either automatically or interactively. MQS published PNode clearing and resource awards for this interval.
25	7/6/2009	17	3	RTPD	RTPD timed out. This interval was filled either automatically or interactively. MQS published PNode clearing and resource awards for this interval.
26	7/7/2009	1	4	RTPD	RTPD timed out. This interval was filled either automatically or interactively. MQS published PNode clearing and resource awards for this interval.
27	7/7/2009	13	3	RTPD	RTPD timed out. This interval was filled either automatically or interactively. MQS published PNode clearing and resource awards for this interval.
28	7/7/2009	16	1	RTPD	RTPD failed due to database permission issue. This interval was filled either automatically or interactively. MQS published PNode clearing and resource awards for this interval.

Count	Date	Hour	Interval	Market	Nature of Actions, Nature of Market Disruption, Rationale and/or Market Disruption Prevented or Minimized as a Result of such Actions
29	7/7/2009	16	2	HASP	HASP failed. ISO issued a notice through the Market Notification System instructing resources to follow Day-Ahead Schedules and Awards for interties. This interval was filled either automatically or interactively. MQS published PNode clearing and resource awards for this interval. Any incremental or decremental Real-Time Energy at the interties beyond the Day-Ahead Schedules that was not dispatched by the ISO is treated as an Operational Adjustment (Tier 2) for Settlement purposes.
30	7/7/2009	16	3	RTPD	RTPD did not run. This interval was filled either automatically or interactively. MQS published PNode clearing and resource awards for this interval.
31	7/7/2009	16	4	RTPD	RTPD application did not run due to timing issue in workflows. This interval was filled either automatically or interactively. MQS published PNode clearing and resource awards for this interval.
32	7/7/2009	17	1	RTPD	RTPD timed out due to timing issue in workflows. This interval was filled either automatically or interactively. MQS published PNode clearing and resource awards for this interval.
33	7/8/2009	7	3	RTPD	RTPD timed out. This interval was filled either automatically or interactively. MQS published PNode clearing and resource awards for this interval.
34	7/12/2009	17	3	RTPD	RTPD timed out due to solution infeasibility. This interval was filled either automatically or interactively. MQS published PNode clearing and resource awards for this interval.
35	7/15/2009	17	3	RTPD	RTPD failed. This interval was filled either automatically or interactively. MQS published PNode clearing and resource awards for this interval.

Notes:
Integrated Forward Market (IFM): The Day-Ahead Market run in which the ISO conducts the market for purchases and sales of Energy for all hours of the next Trading Day based on submitted supply and demand bids, and performs the procurement of Ancillary Services.
Residual Unit Commitment (RUC): The Day-Ahead Market run in which the ISO conducts unit commitment of additional resources based on submitted availability bids and the forecast of demand for every hour of the next Trading Day.
Real-Time Pre-Dispatch (RTPD) Interval 1: The first of a series of four market runs conducted every Trading Hour in advance of the Operating Hour. In this run the ISO conducts the Market Power Mitigation and Reliability Requirement Determination for submitted Bids, which applies to all of the Real-Time Market processes for the given Trading Hour. In this interval the ISO also conducts the procurement of incremental Ancillary Services from internal resources and dynamic external resources.
Real-Time Pre-Dispatch (RTPD) Interval 2: The second of a series of four market runs conducted every Trading Hour in advance of the Operating Hour during which the ISO conducts the HASP. In the HASP, the ISO conducts the procurement and sale of Energy and Ancillary services from non-dynamic System Resources based on submitted Bids and the CAISO Forecast of CAISO Demand. In this interval the ISO also conducts the advisory procurement of incremental Ancillary Services from internal resources and dynamic external resources from T to T+60 minutes and procurement for the given Trading Hour.
Real-Time Pre-Dispatch (RTPD) Interval 3: The third of a series of four market runs conducted every Trading Hour. During this interval the ISO conducts the commitment of internal Short-Start and Fast Start Units for the Time Horizon of T-30 minutes to T+240 minutes. In this interval the ISO also conducts the procurement of incremental Ancillary Services from internal resources and dynamic external resources for the given Trading Hour.
Real-Time Pre-Dispatch (RTPD) Interval 4: The fourth of a series of four market runs conducted every Trading Hour. This interval is for the Real-time Unit Commitment for the T-105 minutes to T+60 minutes time horizon. In this interval the ISO also conducts 15-minute Ancillary Service Awards for non-Hourly System Resources, internal resources and dynamic external resources for the given Trading Hour.
Real-Time Dispatch (RTD): The five minute interval of any given Operating Hour during which the ISO conducts the market for Energy based on submitted bids and the CAISO Forecast of CAISO Demand.

CERTIFICATE OF SERVICE

I hereby certify that I have served the foregoing document upon the parties listed on the official service list in the captioned proceedings, in accordance with the requirements of Rule 2010 of the Commission's Rules of Practice and Procedure (18 C.F.R. § 385.2010).

Dated at Folsom, California this 17th day of August, 2009.

Anna Pascuzzo
Anna Pascuzzo