



California ISO

BAAOP WebSDK Upgrade User Reference

December 2020

Balancing Authority Area Operations Portal (BAAOP) Upgrade

- BAAOP being upgraded from current version of the WebSDK platform to WebSDK Version 3.5.
 - Changes due to this upgrade are primarily aesthetic rather than functional.
- **Map Stage** changes became visible beginning Friday, December 11
- **Production** changes become visible during the week of December 14-18*
- The UI Support model is also changing in coordination with this platform upgrade

**in case of delay, ISO will provide an update*

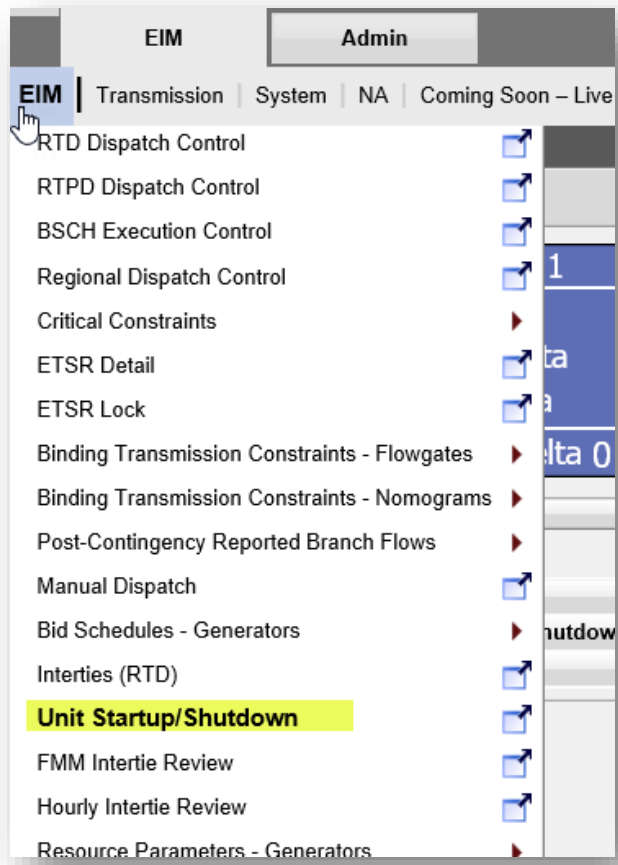
New Look – EIM Displays

Current View


New View

Most changes due to this update are aesthetic in nature and general functionality will be the same, however layout on the display will change due to table sorting updates.

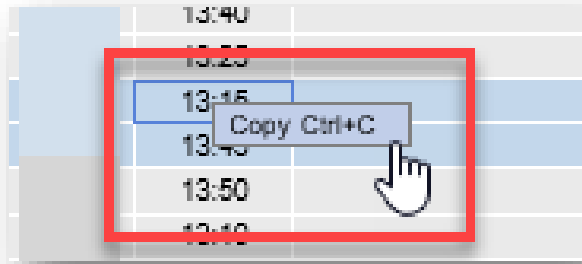
Improved UI Selection



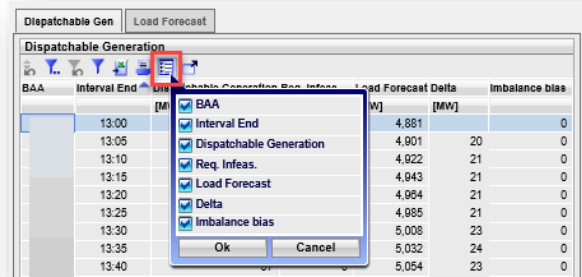
When selecting a UI from the drop down menu:

- the currently opened display is highlighted in the list
- user no longer needs to right-click on the selected display
 - Left-click on the title or, for a tiled display, click the pop-out icon 

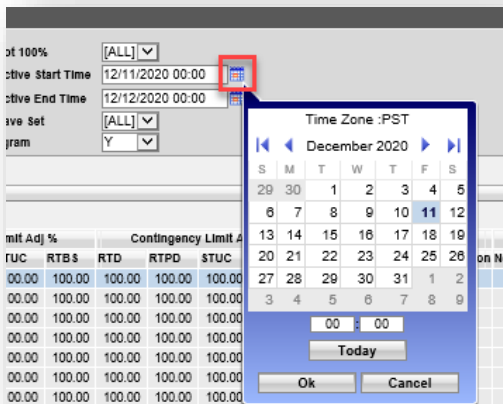
New Functionality



BAAOP now provides the ability to copy data on any display from selected fields by using right-click functionality





The new “Adjust Columns” icon provides user the ability to change the columns displayed in a given table



Displays in BAAOP that allow for date selection now have the calendar populate the same UI rather than opening a separate UI

Updated Icons

The icon for exiting the UI back to the login screen will be changing

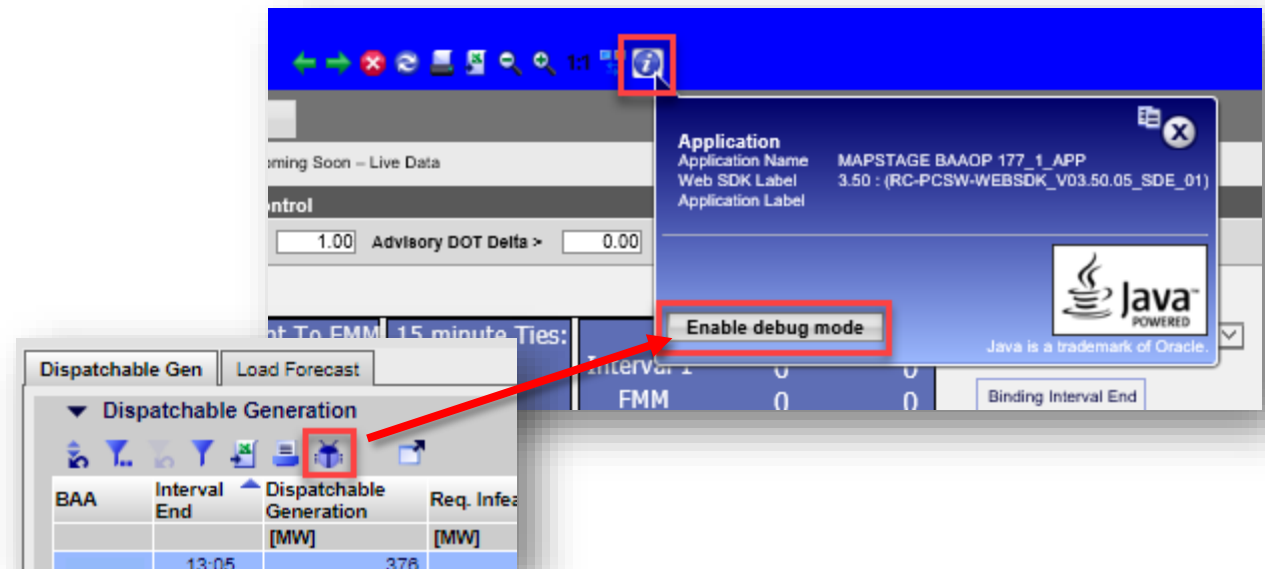
- from the “Close Application” icon 
- to the “Switch Context” icon 

The “Debug” icon will be removed from the displays and can be found by clicking on the information icon at the top of the page

Current View



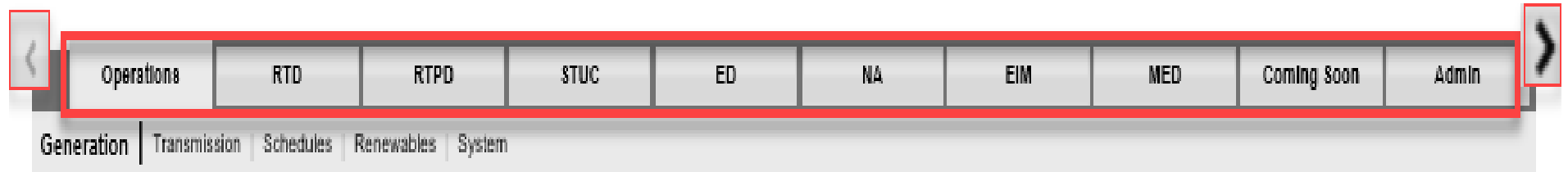
New View



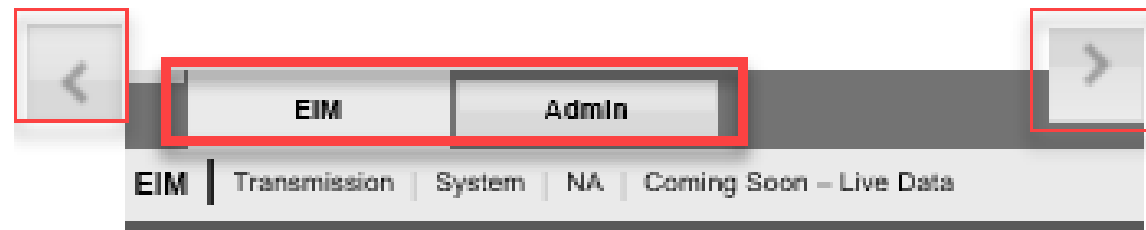
New Functionality - Currently only impacts ISO

When the PC screen size does not allow for the viewing of each of the available tabs, new icons < & > allow user to scroll to additional tabs

ISO
View →



EIM
View →



A gray arrow indicates scrolling is not available

New Support Model

Our BAAOP UI support model is changing along with this upgrade

Supported



NOT Supported

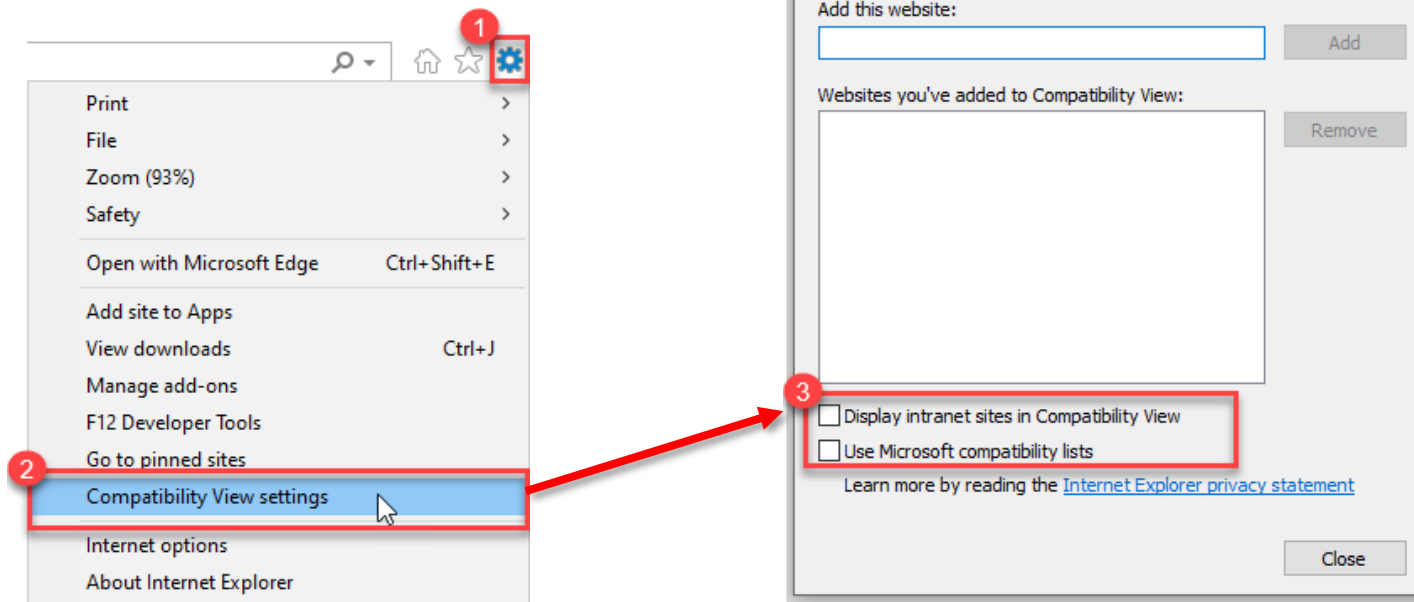


Though BAAOP may still be used in Chrome, the primary supported browser is Internet Explorer, therefore defects identified in Chrome will not be validated.

*Edge is not currently supported

Basic Display Layout

Note for IE11 Users, all compatibility features must be turned off in order for the displays to function properly.

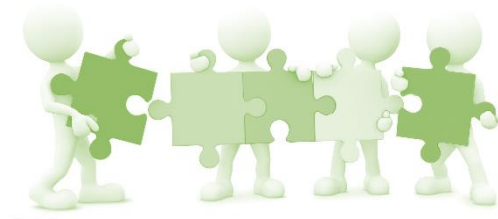


- In IE, select 'Tools' and then select 'Compatibility View Settings'
- Remove any URL and deselect all options.

Contact Us!

Your primary trainers/training contacts:

- **Heidi Carder, Senior Client Trainer**
- **Rashele Wiltzius, Customer and Readiness Manager**



For more detailed information on EIM related training please visit the Western EIM website at www.westerneim.com or our [Learning Center](#) on our CAISO website

You may also reach us at:

CustomerReadiness@caiso.com

