



CALIFORNIA ISO

# Preparatory Rerun Settlements Data Walkthrough

---

*February 5, 2004*

*ISO Settlements*

*ISO Client Relations*



# Conference Call Overview

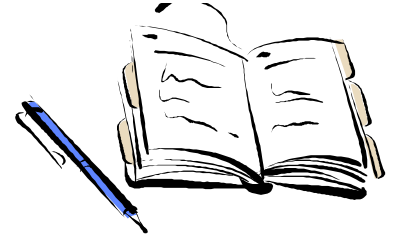
---

- Discuss data sources used to determine the Preparatory Rerun Settlements
- Examples
  - System Generated Charge Type
  - System/Manually Generated Charge Type
  - Manually Generated Charge Type



# Agenda

---



- Identify Applicable Data Sources
- Examples
  - System Generated - CT 407
  - System/Manually Generated – CT 1010
  - Manually Generated – CT 452



# Data Sources

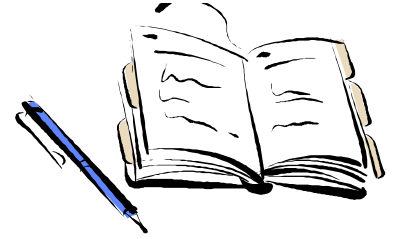
---

- *Original Settlement* –
  - System (D Records)
  - Manual Adjustments (A Records)
  - Settlements Summary (Final – includes both manual and system)
  
- *CD* –
  - Preliminary Summary (New total based on Prep Rerun)
  - Detail Summary (D Records) – details change from original
  
- *Preparatory Rerun Summary – SC Workspace*
  - Manual Adjustment (A record) – Reversal of Original Settlement
  - Manual Adjustment (A record) – New “A” Record
  - Summary File (S records)

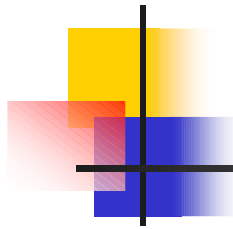


# Agenda

---



- Identify Applicable Data Sources
- **Examples**
  - **System Generated - CT 407**
  - System/Manually Generated – CT 1010
  - Manually Generated – CT 452



# CT 407 Example 1.

## Preparatory Rerun Summary - SC Workspace

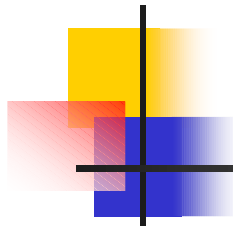
CHRG_TYPE_ID	STLMT_TYPE	TRADE_DATE	BAID	SUMM_DATE	STLMT_TOTAL	
407	S	10/2/00	1234	10/23/03	<u><u>\$ 115.79</u></u>	S record → Prep Rerun Adjustment

### Original Settlement

CHRG_TYPE_ID	STLMT_TYPE	TRADE_DATE	BAID	SUMM_DATE	STLMT_TOTAL	
407	S	10/2/00	1234	10/2/00	\$ 33,621.51	← Original Settlement D record

### CD - Preliminary Summary File

TRADE_INT	BAID	Bill_Qty	Price	CT	STLMT_AMOUNT	
10/2/00	1234	-287.54	250	407	<u><u>\$ 33,737.30</u></u>	← Prep Rerun System Calc



# CT 407 Example 2.

## System + manual adjustment from previous rerun

### Preparatory Rerun Summary - SC Workspace

CHRG_TYPE_ID	STLMT_TYPE	TRADE_DATE	BAID	SUMM_DATE	STLMT_TOTAL	
407	S	10/2/00	1234	10/23/03	<u><u>\$ 31.25</u></u>	S record → Prep Rerun Adjustment

### Validation:

			Prep Rerun System Calc	Original Settlement
The difference between Old Calc and New Calc =	\$ 115.79	A record	→	\$33,737.30 \$ 33,621.51
Reversal of the Old adjustments =	\$ (84.54)	A record	→	Reversal of Manual adjustment
Total Adjustments that should appear on the Statement =	<u>\$31.25</u>			

# CT 407 Example 2.

System + manual adjustment from previous rerun

## Original Settlement

CHRG_TYPE_ID	STLMT_TYPE	TRADE_DATE	BAID	SUMM_DATE	STLMT_TOTAL	RERUN_ADJ_FLG
407	S	10/2/00	1234	10/2/00	\$ 33,621.51	← Original Settlement D Record
407	S	10/2/00	1234	5/24/01	84.54	← Manual adjustment A Record
					<u>\$ 33,706.05</u>	

## CD - Preliminary Summary File

TRADE_INT	BAID	Bill_Qty	Price	CT	STLMT_AMOUNT	
10/2/00	1234	-287.54	250	407	<u>\$ 33,737.30</u>	← Prep Rerun System Calc

Therefore,

Prep Rerun – Original – Manual Adjust. = Prep Rerun Manual Adjustments

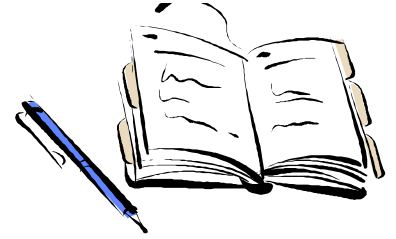
$$\$33,737.30 - \$33,621.51 - 84.54 = \$31.25$$





# Agenda

---



- Identify Applicable Data Sources
- Examples
  - System Generated - CT 407
  - System/Manually Generated – CT 1010
  - Manually Generated – CT 452

# System & Manual - CT 1010 Example

## Step 1. Original Summary

### Original Settlement

CHRG_TYPE_ID	STLMT_TYPE	TRADE_DATE	BUS_ASSOC_ID	STAT_DT	AMT
1010	S	10/5/00	1234	10/05/00	\$(42,693.04) S record
1010	S	10/5/00	1234	03/06/01	\$61.63 A record Dispute
1010	S	10/5/00	1234	05/24/01	<u>\$(11,256.95) S record</u>
1010	S	10/5/00	1234	05/24/01	<u>\$139.90 S record</u> ← Dispute Adjust.
					<b>(53,748.46)</b>

### Break down of the Original Summary

Original "D" Record	\$ (76,569.85) D record
Manual Adjustment	\$ 33,876.81 A record
Dispute Adjustment	\$ 61.63 A record
	<u><b>\$ (42,693.04)</b></u>
Reversal of Manual Adjust.	\$(33,876.81) A record
Manual Adjustment	\$22,066.51 A record
Previous rerun System Delta	\$553.35 A record
	<u><b>(11,256.95)</b></u>

# System & Manual - CT 1010 Example

## Step 2. Prep Rerun Summary

### CD - Preliminary Summary

#### New D Records

CT	TRADE_INT	BAID	AMOUNT
1010	10/5/2000	1234	\$ (75,844.03)

### Preparatory Rerun Summary - SC Workspace

CHRG_TYPE_ID	STLMT_TYPE	TRADE_DATE	BUS_ASSOC_ID	STAT_DT	STLMT_TOTAL
1010	S	10/5/00	1234	10/23/03	\$11,542.89 S record

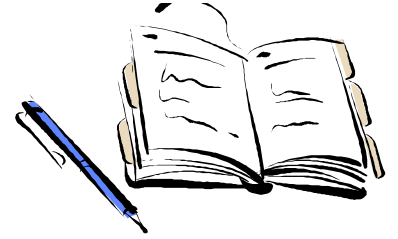
### Break down of the Rerun Summary

Reversal of Manual Adjustment	\$ (22,066.51)	→	Reference ID
New Manual Adjustment	\$33,436.93	→	R11 A record
Reversal of historical adjustments	\$ (553.35)	→	N11 A record
The difference between New "D" Record and Orig."D" Record = \$75,844.03 - \$76,569.85	\$725.82	→	R2 A record
	<u>\$ 11,542.89</u>		N2 A record



# Agenda

---



- Identify Applicable Data Sources
- Examples
  - System Generated - CT 407
  - System/Manually Generated – CT 1010
  - Manually Generated – CT 452

# Manual - CT 452

## Step 1. Original Settlement

### Original Settlement for trade day

CHRG_TYPE_ID	STLMT_TYPE	TRADE_DATE	BUS_ASSOC_ID	STLMT_SUMM_DATE	STLMT_TOTAL
452	S	11/24/00	1234	11/24/00	\$(1,498.25) A record
452	S	11/24/00	1234	06/04/01	-
452	S	11/24/00	1234	04/29/02	\$(0.04) A record
					<b>(1,498.29)</b>

### Break down of the Original Settlement

Original "A" Record	\$(1,498.25) A record
Retro Manual adjustments	\$(0.04) A record
	<b>\$(1,498.29)</b>

# Manual - CT 452

## Step 2. Prep Rerun Summary

### Preparatory Rerun Summary - SC Workspace

CHRG_TYPE_ID	STLMT_TYPE	TRADE_DATE	BUS_ASSOC_ID	STLMT_SUMM_DATE	STLMT_TOTAL
452	S	11/24/2000	1234	10/12/03	<b>\$4,608.32 S record</b>

Reversal of Old Manual Adjustments	\$ 1,498.29	→ R71 A record
New Manual Adjustments	\$ 3,110.03	→ N71 A record
	<u>\$ 4,608.32</u>	

### Original A Records

CT	TRADE_INT	BAID	AMOUNT
452	11/24/2000	1234	\$ (1,498.29)

### New A Records

CT	TRADE_INT	BAID	AMOUNT
452	11/24/00	1234	\$ 3,110.03

# Manual - CT 452

## Step 3. Validation

### Validation for HE 1, trade interval 1:

Settlements Statement:

ADJ_COMMENT	Amt	EFFECT_DT_TM	BUS_ASSOC_ID	CHRG_TYPE_ID	BILL_QTY	PRICE	REF_ID	HR	Int
Allocation of Out of Sequence dispatch to relieve Intra-zonal Congestion. Total Dollars Allocated = \$1,005.59; Total Zonal Load and Real Time Exports = 1.10 MWh.	\$356.53	11/24/2000	1234	452	0.39	914.17	N71	1	1

#### New Adjustment comment :

Allocation of Out of Sequence dispatch to relieve Intra-zonal Congestion.

**Total Dollars Allocated = \$1,005.59; Total Zonal Load and Real Time Exports = 1.10 MWh.**

**Price = Total dollars Allocated/ Total Zonal Load and RT\_Export**  
\$ 914.17

**Billable Quantity = BAID Zonal Load + RT\_Export**  
0.39 MW

Therefore for HE 1, Interval 1,

BAID	BQ	Price	Amt	CT
1234	0.39	\$ 914.17	\$ 356.53	452



# Any Questions?

---

