

## Market Highlights<sup>1</sup> (April 4–April 17)

- The average DLAP price in the integrated forward market was \$28.95. The maximum and minimum DLAP prices were \$121.78 and -\$13.07, respectively. The maximum and minimum PNode prices in the integrated forward market were \$111.63 and -\$148.95 respectively.
- The top two interties congested in the integrated forward market were MALIN500 and NOB\_ITC. Congestion rents in these two weeks totaled \$16,486,348.78.
- The average day-ahead ancillary service prices were between \$0.00 and \$108.61.
- Approximately 88.70 percent of the RUC requirements were met from RA units.
- The average real-time FMM DLAP price was \$40.16, with a maximum price of \$1,251.84 and a minimum price of -\$17.47. The maximum and minimum PNode prices in the FMM were \$1,344.27 and -\$991.46, respectively.
- Out of the total 1,344 FMM intervals, 20 intervals saw DLAP prices above \$250, and 0 intervals saw DLAP prices below -\$150.
- Out of the total 1,344 FMM intervals, 63 intervals saw ELAP prices above \$250 And 21 intervals saw ELAP prices below -\$150.
- The average real-time FMM ELAP price was \$26.01, with a maximum price of \$1,199.60 and a minimum price of -\$255.11.
- The average real-time RTD DLAP price was \$30.89, with a maximum price of \$1,142.40 and a minimum price of -\$24.46. The maximum and minimum PNode prices in the RTD were \$1,238.15 and -\$890.41, respectively.
- Out of the total 4,032 RTD intervals, 54 intervals saw DLAP prices above \$250 and 0 interval saw DLAP prices below -\$150.
- Out of the total 4,032 RTD intervals, 134 intervals saw ELAP prices above \$250 and 63 intervals saw ELAP prices below -\$150. The average real-time RTD ELAP price was \$25.76, with a maximum price of \$1,095.12 and a minimum price of -\$270.35.
- Root cause for daily high price events are noted in Tables 1 and Table 2.

Table 1 FMM Intervals	
Trade Date	Root Cause
FMM Apr 5 HE 22; Apr 6 HE 18; Apr 9 HE 19, 20;	Changes in renewable forecast and load changes.

<sup>1</sup> A description of the metrics presented in this report is available at <http://www.caiso.com/Documents/WeeklyPerformanceReportMetricsKey.pdf>

<b>Table 1 FMM Intervals</b>	
<b>Trade Date</b>	<b>Root Cause</b>
Apr 10 HE 19; Apr 11 HE 6; Apr 12 HE 6	
FMM Apr 6 HE 7; Apr 9 HE 6; Apr 9 HE 21; Apr 10 HE 21	Load changes and reduction of net imports.
FMM Apr 8 HE 20	Congestion on RM_TM21_NG.
FMM Apr 17 HE 17, 20	Load changes.
FMM Apr 11 HE 18; Apr 11 HE 21	Load changes and generator outage.
FMM Apr 11 HE 20	Load changes, generator outage, changes in renewable forecast, and re-dispatch of resources.
FMM Apr 17 HE 9	Congestion on OMS 5730606 TL50003_NG

<b>Table 1 RTD Intervals</b>	
<b>Trade Date</b>	<b>Root Cause</b>
RTD Apr 4 HE 19; Apr 5 HE 18; Apr 9 HE 1	Load changes.
RTD Apr 6 HE 1; Apr 9 HE 18, 19; Apr 11 HE 23; Apr 15 HE 16	Renewable deviation.
RTD Apr 6 HE 16; Apr 10 HE 18; Apr 11 HE 19,20; Apr 12 HE 10, 19	Load changes and renewable deviation.
RTD Apr 6 HE 22	Load changes, reduction of net imports, renewable deviation, re-dispatch of resources, and congestion on RM_TM21_NG.
RTD Apr 6 HE 23	Generator outage, reduction of net imports, re-dispatch of resources, and congestion on RM_TM21_NG.
RTD Apr 6 HE 24	Renewable deviation and reduction of net imports.
RTD Apr 7 HE 1	Load changes and re-dispatch of resources.
RTD Apr 7 HE 23; Apr 14 HE 8	Reduction of net imports.
RTD Apr 9 HE 6, 7	Load changes, renewable deviation, and re-dispatch of resources.
RTD Apr 11 HE 2	Re-dispatch of resources.
RTD Apr 11 HE 18	Load changes and generator outages.
RTD Apr 16 HE 23	Load changes, renewable deviation, and reduction of net imports.
RTD Apr 17 HE 7	Congestion on OMS 5730606 TL50003_NG
RTD Apr 17 HE 12	Congestion on MIGUEL_BKs_MXFLW_NG



Figure 1: Day-Ahead (IFM) LAP LMP and Cleared Bid-In Demand

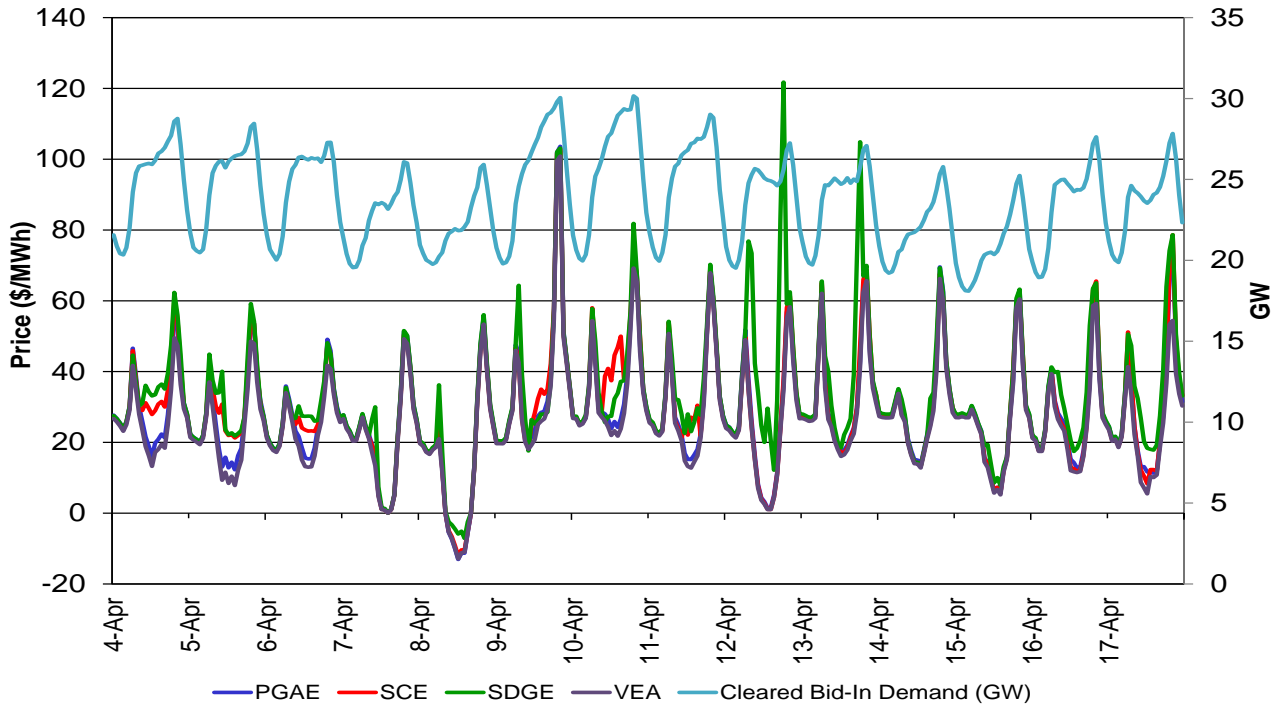
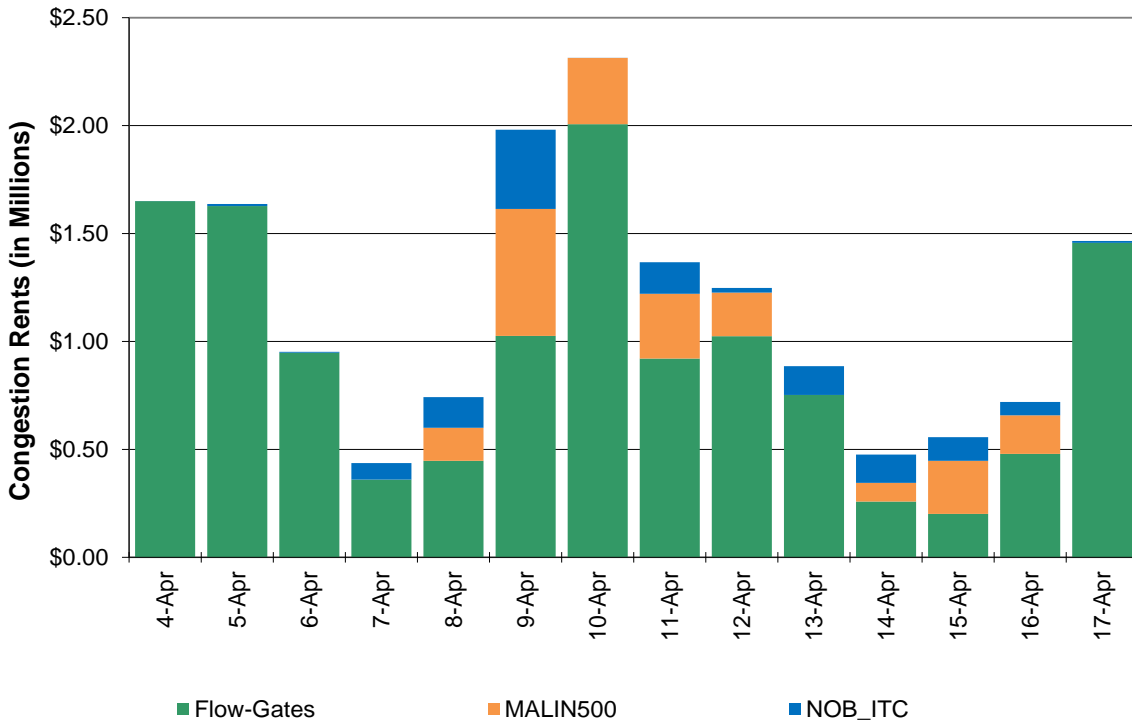


Figure 2: Day-Ahead Congestion Rents



**Figure 3: Day-Ahead Congestion Rents for Flow-Based Constraints**

<b>Transmission Constraint</b>	<b>Congestion Rent</b>
24138_SERRANO_500_24137_SERRANO_230_XF_1_P	\$ 3,170,148.39
24036_EAGLROCK_230_24059_GOULD_230_BR_1_1	\$ 2,999,191.00
22192_DOUBLTTP_138_22300_FRIARS_138_BR_1_1	\$ 1,907,067.43
35612_TRIMBLE_115_35616_SNJOSEB_115_BR_1_1	\$ 1,410,861.98
24016_BARRE_230_24154_VILLA PK_230_BR_1_1	\$ 825,429.04
24086_LUGO_500_26105_VICTORVL_500_BR_1_1	\$ 314,363.49
7820_TL_230S_OVERLOAD_NG	\$ 295,495.21
34427_ATWELL_115_34701_SMYRNA 1_115_BR_1_1	\$ 255,256.03
34548_KETTLEMN_70.0_34552_GATES_70.0_BR_1_1	\$ 240,977.99
31336_HPLND JT_60.0_31370_CLVRDLJT_60.0_BR_1_1	\$ 210,309.31
24114_PARDEE_230_24147_SYLMAR S_230_BR_2_1	\$ 171,858.89
25001_GOODRICH_230_24076_LAGUBELL_230_BR_1_1	\$ 167,929.69
31218_ER_FTNJT_115_31220_EGLE RCK_115_BR_1_1	\$ 122,992.48
33541_AEC_TP1_115_33540_TESLA_115_BR_1_1	\$ 109,821.52
34758_LAMONT_115_34805_ARVINJ1_115_BR_1_1	\$ 108,383.98
31990_DAVIS_115_31962_WDLND_BM_115_BR_1_1	\$ 105,381.43
24016_BARRE_230_25201_LEWIS_230_BR_1_1	\$ 94,276.40
30050_LOSBANOS_500_30055_GATES1_500_BR_1_1	\$ 84,381.84
34859_PRMTFMTP_70.0_34873_Q484TP_70.0_BR_1_1	\$ 81,714.95
31378_FULTON_60.0_31382_FTCHMTNP_60.0_BR_1_1	\$ 68,670.14
34112_EXCHEQUR_115_34116_LE GRAND_115_BR_1_1	\$ 56,293.04
7820_TL_230S_IV-SX-OUT_NG	\$ 47,415.55
34469_GFFNJCT_70.0_34470_GIFFEN_70.0_BR_1_1	\$ 29,033.43
34887_TAP SKRN_70.0_34882_SAN EMDO_70.0_BR_1_1	\$ 27,086.99
34418_KINGSBRG_115_34405_FRWT TAP_115_BR_1_1	\$ 25,915.03
22773_BAY BLVD_69.0_22604_OTAY_69.0_BR_1_1	\$ 22,344.16
24153_VESTAL_230_24235_RECTOR_230_BR_1_1	\$ 20,799.82
31461_JESSTAP_115_31464_COTWDPGE_115_BR_1_1	\$ 17,182.34
22604_OTAY_69.0_22616_OTAYLKTP_69.0_BR_1_1	\$ 15,799.56
30523_CC SUB_230_30525_C.COSTA_230_BR_1_1	\$ 15,431.33
34116_LE GRAND_115_34134_WILSONAB_115_BR_1_1	\$ 13,049.60
34474_HELM_70.0_34556_STRD JCT_70.0_BR_1_1	\$ 12,706.09
32218_DRUM_115_32244_BRNSWKT2_115_BR_2_1	\$ 12,369.47
32208_GLEAF TP_115_32214_RIO OSO_115_BR_1_1	\$ 11,862.67
30435_LAKEVILE_230_30460_VACA-DIX_230_BR_1_1	\$ 11,492.70
31214_GEYERS56_115_31220_EGLE RCK_115_BR_1_1	\$ 11,000.58
33360_HILLSdle_60.0_33361_HLLSDLJT_60.0_BR_1_1	\$ 7,375.95
34864_GARDNER_70.0_34867_MARICOPW_70.0_BR_1_1	\$ 6,080.18
31696_CNTRVLE_60.0_31704_CLARK RD_60.0_BR_1_1	\$ 5,388.35

**Figure 3: Day-Ahead Congestion Rents for Flow-Based Constraints (contin.)**

<b>Transmission Constraint</b>	<b>Congestion Rent</b>
30055_GATES1_500_30060_MIDWAY_500_BR_1_3	\$ 5,280.25
HUMBOLDT_IMP_NG	\$ 5,091.70
32212_E.NICOLS_115_32214_RIO_OSO_115_BR_1_1	\$ 4,752.80
36851_NORTHERN_115_36852_SCOTT_115_BR_2_1	\$ 4,643.62
31692_DE_SABLA_60.0_31696_CNTRVLE_60.0_BR_1_1	\$ 4,151.66
31464_COTWDPGE_115_30105_COTTNWD_230_XF_1	\$ 3,636.52
24092_MIRALOMA_500_24093_MIRALOM_230_XF_4_P	\$ 3,569.99
32056_CORTINA_60.0_30451_CRTNA_M_1.0_XF_1	\$ 2,232.10
32314_SMRTSVLE_60.0_32349_BEALE2J1_60.0_BR_1_1	\$ 1,364.64
31512_BIG_BEN2_115_31516_WYANDJT2_115_BR_1_2	\$ 1,209.40
31080_HUMBOLDT_60.0_31088_HMBLT_JT_60.0_BR_1_1	\$ 969.25
32326_ENCL_TAP_60.0_32332_PEASE_60.0_BR_1_1	\$ 941.88
34700_SMYRNA_2_115_34742_SEMITRPJ_115_BR_1_1	\$ 805.36
31576_WNTU_PMS_60.0_31578_LOMS_JCT_60.0_BR_1_1	\$ 785.33
33045_FIBRJCT1_115_33049_RIVERVIEW_115_BR_1_1	\$ 685.73
22480_MIRAMAR_69.0_22756_SCRIPPS_69.0_BR_1_1	\$ 583.48
31104_CARLOTTA_60.0_31105_RIODLLTP_60.0_BR_1_1	\$ 531.94
31110_BRDGVLE_60.0_31112_FRUITLND_60.0_BR_1_1	\$ 485.21
31000_HUMBOLDT_115_31452_TRINITY_115_BR_1_1	\$ 416.71
31593_COWCREEK_60.0_31597_DESCHTP1_60.0_BR_1_1	\$ 98.12
31604_COTTONWD_60.0_31611_RAWSON_60.0_BR_2_1	\$ 60.29
31566_KESWICK_60.0_31582_STLLWATR_60.0_BR_1_1	\$ 55.69
22296_FENTONTP_69.0_22292_FENTON_69.0_BR_1_1	\$ 44.93
<b>Totals</b>	<b>\$ 13,155,534.60</b>



Figure 4: Day-Ahead (IFM) Average A/S Price

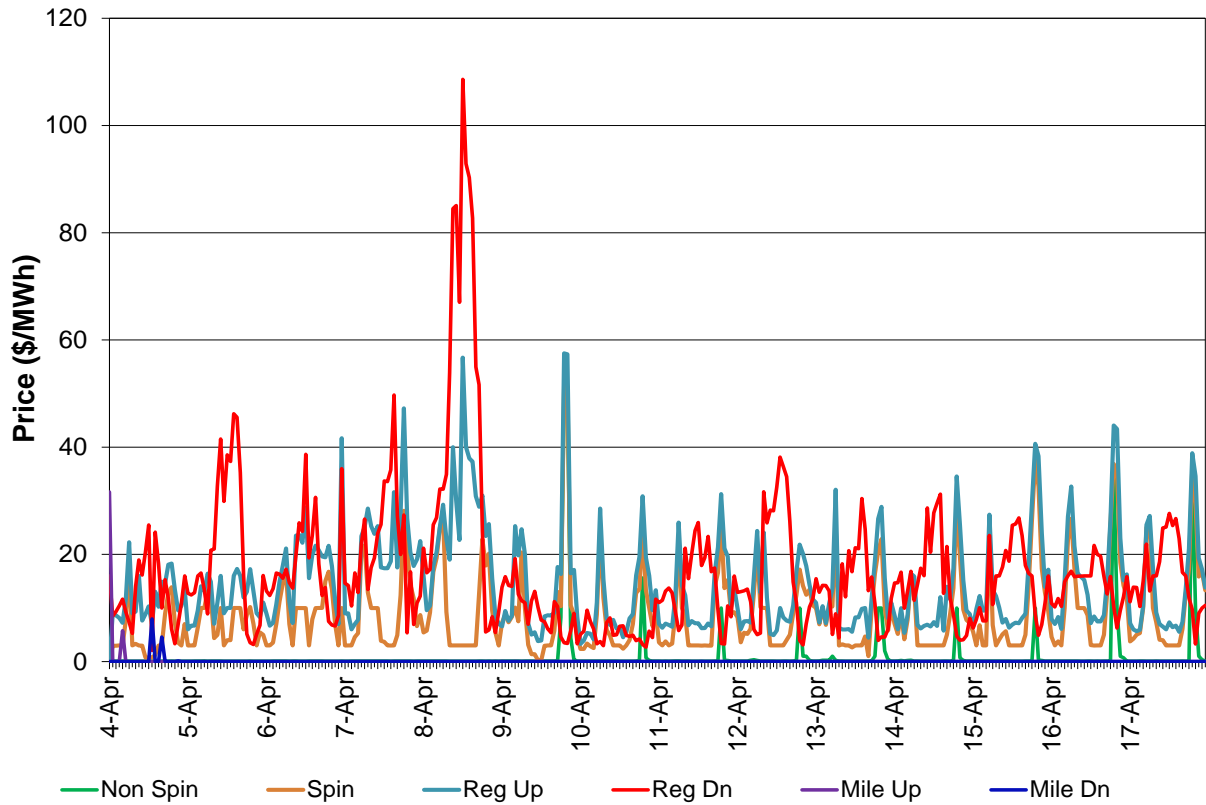


Figure 5: Day-Ahead Average RUC Price

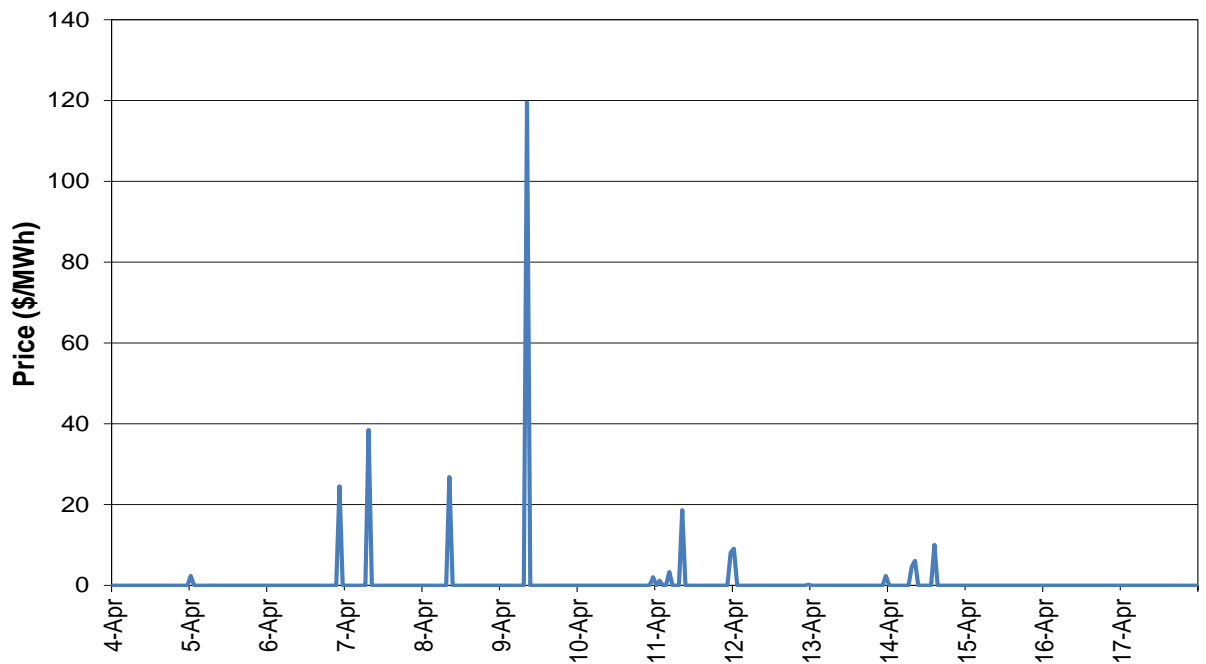




Figure 6: Real-Time FMM Average A/S Price

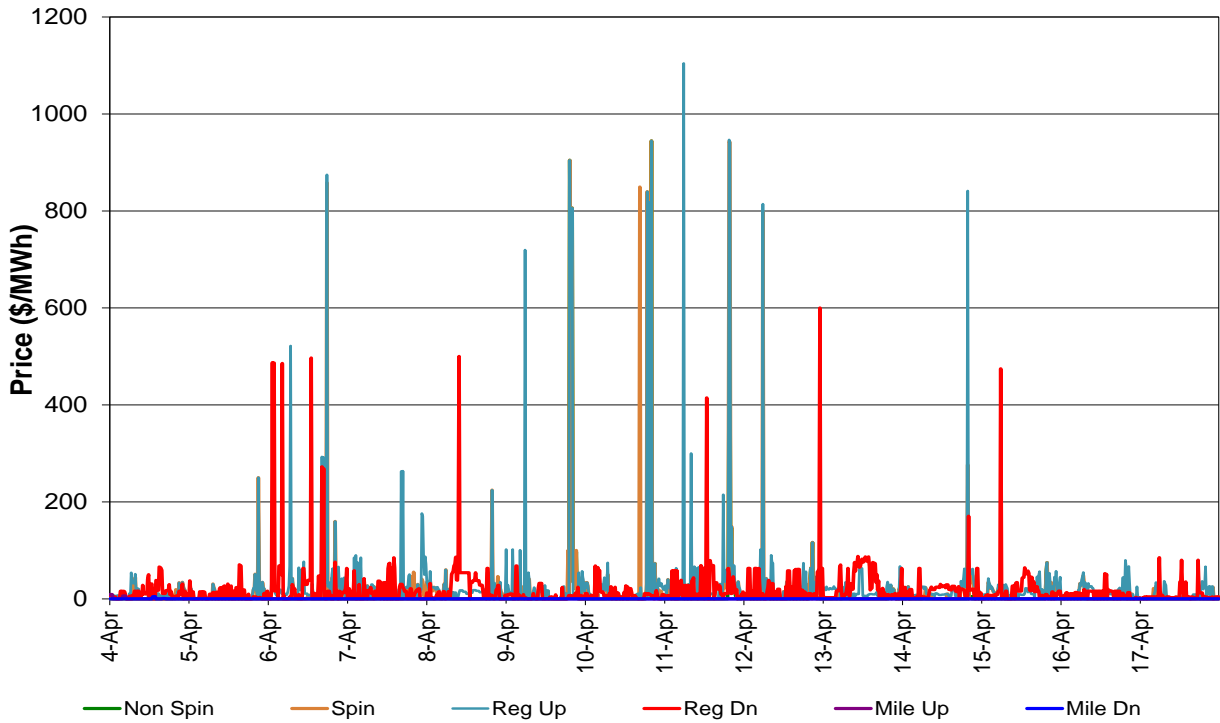
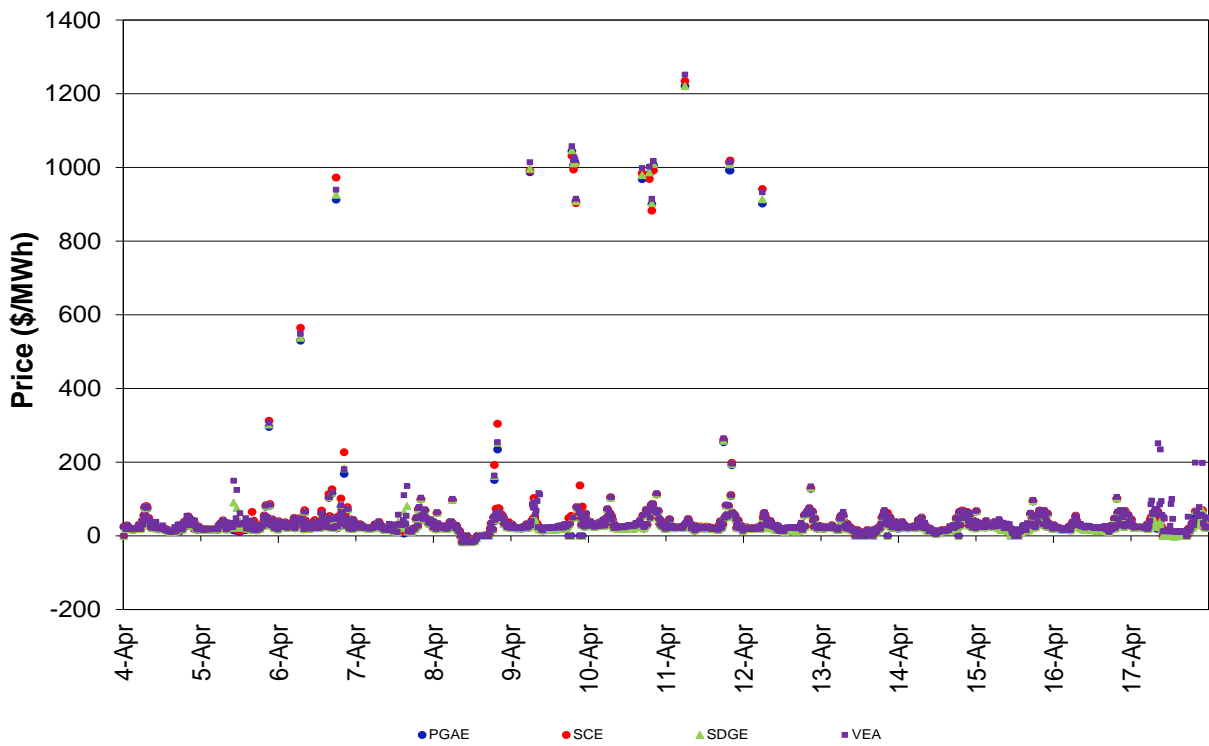
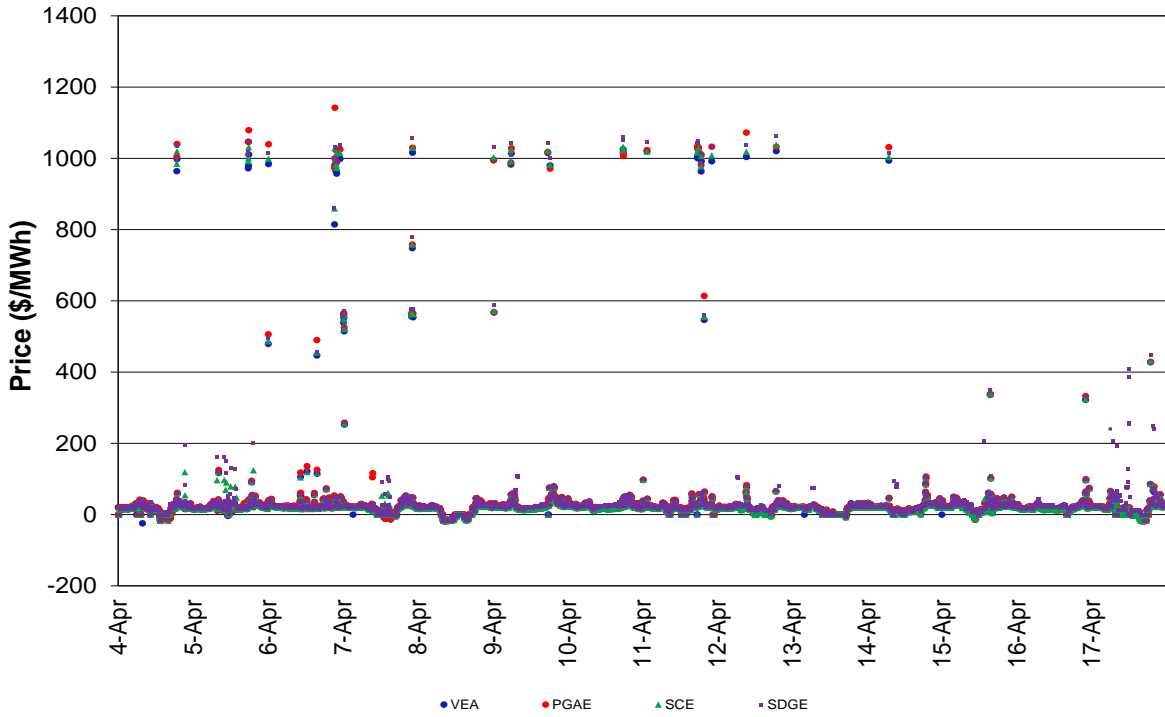


Figure 7: Real-Time FMM DLAP LMP



**Figure 8: Real-Time RTD DLAP LMP**



**Figure 9: Real-Time FMM ELAP LMP**

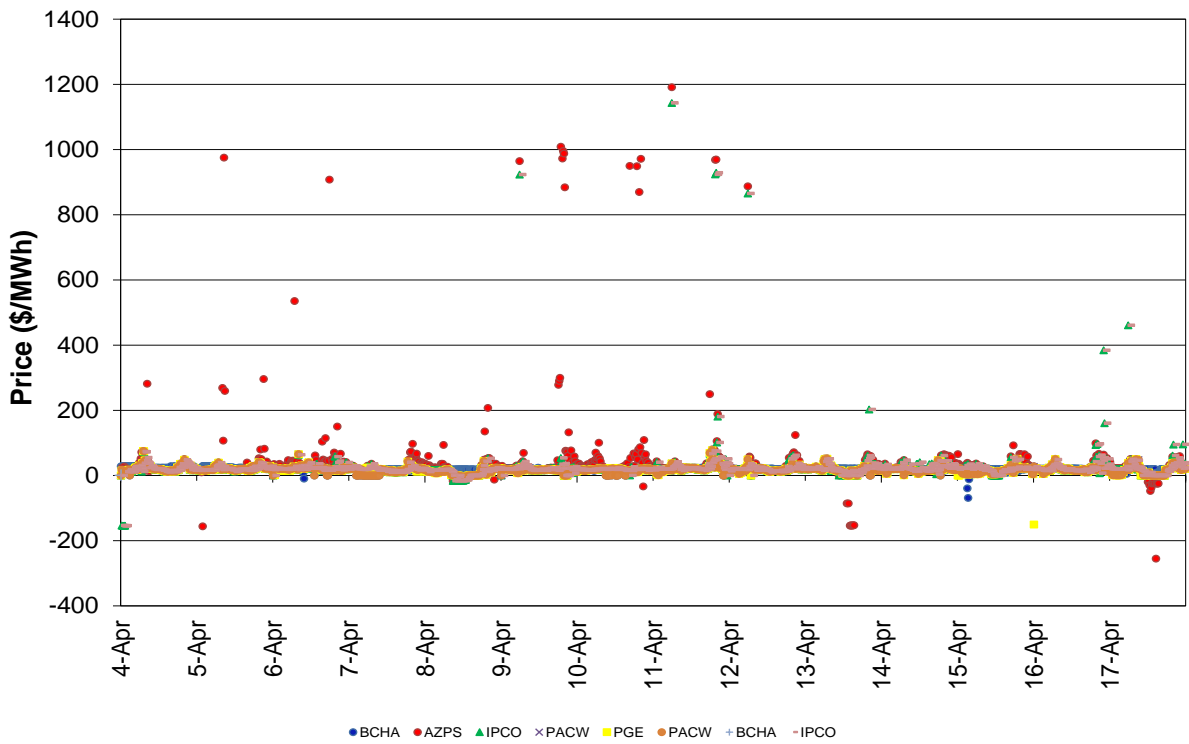






Figure 10: Real-Time RTD ELAP LMP

