

**Proposed GMC with modifications for TORs and
Phase-in of Supply into System Operations over 3 years
Comparison Period Jun-09 to May-10**



Options

Proposed GMC

The initial proposal uses gross generation, imports, load & export MWs for both market services & system operations

TOR modification

Modify TORs as follows: 100% of TOR volumes excluded from market services; minimum of TOR volumes for supply or demand are included in system operations

**Phase in of supply in
system Operations**

Volumes for supply (generation & imports) in system operations are phased in as follows: 1/3 in year 1; 2/3 in year 2; 100% in year 3 and thereafter. TORs are excluded from this mitigation and are charged the rate as if all supply is included.

CRRs

New CRR volumes have been pulled as there were errors in the prior bill comparison. The changed volumes are used in years 1, 2 and 3.

Billing Determinants

Awards

MWs of awarded bids used for market services

Flows

MWs of metered flow used for system operations

Calculation of rates

Equalizes 2010 revenue requirement to actual for the June 2009 - May 2010 period.

Allocates revenue requirement to 3 cost categories

Credits Market bid fee, Inter-SC trade fee and SCID charges to the market services cost category.

Credits CRR auction bid fee to the CRR cost category.

Excludes TORs from Market services

Excludes max of TORs for supply or demand from system operations

Transfers TORs to separate category and charges them at rate without effects of supply phase-in

Credits TORs to the system operations cost category.

Phases in supply 1/3 in system operations in year 1, 2/3 in year 2 and 100% in year 3

Divides the 3 cost categories by the billing determinants to derive the rates.

Note: Errors in CRR summary was noted and has been revised in the 3 year phase-in. No change was made to CRR volumes in the original proposed GMC comparison.

	Before			
Rates	Modification	Year 1	Year 2	Year 3
Market bid fee	\$ 0.005	\$ 0.005	\$ 0.005	\$ 0.005
Inter-SC trade Fee	\$ 1.00	\$ 1.00	\$ 1.00	\$ 1.00
CRR auction bid fee	\$ 1.00	\$ 1.00	\$ 1.00	\$ 1.00
SCID monthly fee	\$ 1,000	\$ 1,000	\$ 1,000	\$ 1,000
Market services rate per MWh	\$ 0.0897	\$ 0.0913	\$ 0.0913	\$ 0.0913
Systems Operations rate per MWh	\$ 0.2839	\$ 0.4328	\$ 0.3455	\$ 0.2875
TOR rate per MWh	\$ -	\$ 0.2875	\$ 0.2875	\$ 0.2875
CRR services rate per MWh	\$ 0.0118	\$ 0.0113	\$ 0.0113	\$ 0.0113

**Proposed GMC with modifications for TORs and
Phase-in of Supply into System Operations over 3 years
Comparison Period Jun-09 to May-10**



Index	Index to folders	
Year 1 rates	Rates based on proposed GMC after modification for TORs and phase-in of 1/3 supply in system operations	
Year 2 rates	Rates based on proposed GMC after modification for TORs and phase-in of 2/3 supply in system operations	
Year 3 rates	Rates based on proposed GMC after modification for TORs and phase-in of 100% supply in system operations	
proposed rate	Proposed GMC before modification for TORs and phase-in of supply in system operations	
graph data details	Components to GMC graphs by customer class	
gr1 comparison of gmc options	Graph of proposed GMC options by customer class	
g2 change in GMC	Graph of comparison of proposed GMC to current GMC by customer class	
Listing of Billing Determinants	(note there has been no change since the last bill comparison worksheet)	
	Market Services	
	Schedules and Awards (Absolute by RSRC)	Included
	DA Generation Schedules (including ETC TOR)	YES
	DA Import Schedules (including ETC TOR)	YES
	DA Load Schedules (including ETC TOR)	YES
	DA Export Schedules (including ETC TOR)	YES
	DA Ancillary Service Awards	YES
	DA Ancillary Service Self Provision	YES
	Convergence Bidding Schedules	YES
	MSS Gross MWh (including ETC TOR)	YES
	RUC Awards	NO
	WHEEL Quantities (One-Side)	YES
	DA Inter-SC Trade	NO
	HASP Incremental and Decremental Energy (Non Dynamic)	YES
	HASP Incremental and Decremental Ancillary Service Awards	YES
	HASP Incremental and Decremental Ancillary Service Self Provision	YES
	HASP Inter-SC Trades	NO
	HASP Incremental and Decremental Wheel (One-sided)	YES
	HASP Operational Adjustment	NO
	Real Time Optimal Energy	YES
	Residual Imbalance Energy	NO
	Real-Time Minimum Load Energy	YES
	Exceptional Dispatch Energy	NO
	Regulation Energy	NO
	Standard Ramping Energy	NO
	Ramping Energy Deviation	NO
	Derate Energy	YES
	Real-Time Self Schedule	YES
	MSS Load Following	YES
	Real Time Pumping Energy	YES
	Real Time Operational Adjustments	NO
	Real Time Incremental and Decremental Ancillary Service Awards	YES
	Real Time Incremental and Decremental Ancillary Service Self Provision	YES

**Proposed GMC with modifications for TORs and
Phase-in of Supply into System Operations over 3 years
Comparison Period Jun-09 to May-10**



System Operations

Flow (Absolute by RSRC)

	Included
Non Dynamic System Resource Deemed Deliver Energy (include ETC/TOR)	Yes
Dynamic System Resource Deemed Deliver Energy (include ETC/TOR)	Yes
Metered Generation Quantities (include ETC/TOR)	Yes
Metered Default Lap Quantities (include ETC/TOR)	Yes
Metered Custom Lap Quantities (include ETC/TOR)	Yes
Metered Pumping Energy (include ETC/TOR)	Yes
MSS Gross Metered Quantities (include ETC/TOR)	Yes
Non Dynamic System Resource Wheel Deemed Deliver Energy (one sided)	Yes

Inter-SC Trades

INTER-SC Trade (Absolute by Trade)

	Included
DAM TO-SC Inter-SC Trade Energy (Physical and Converted)	Yes
DAM FROM-SC Inter-SC Trade Energy (Physical and Converted)	Yes
DAM TO-SC Inter-SC Trade Energy (Financial)	Yes
DAM FROM-SC Inter-SC Trade Energy (Financial)	Yes
HASP TO-SC Inter-SC Trade Energy (Physical and Converted)	Yes
HASP FROM-SC Inter-SC Trade Energy (Physical and Converted)	Yes
HASP TO-SC Inter-SC Trade Energy (Financial)	Yes
HASP FROM-SC Inter-SC Trade Energy (Financial)	Yes
Ancillary Services TO-SC Inter-SC Trade Energy	Yes
Ancillary Services FROM-SC Inter-SC Trade Energy	Yes
RUC Obligation TO-SC Inter-SC Trade Energy	Yes
RUC Obligation FROM-SC Inter-SC Trade Energy	Yes

year 1 rates

Proposed GMC modified for TORs

Phase-in of supply into System Operations over 3 years: Year 1 - Include 1/3 of supply (exclude 2/3 of supply)

Comparison Period Jun-09 to May-10

Revised GMC Rates								
Units Jun-09 to May-10	Market Service rate (Award)	Systems Operations rate (Flow)	Flow TORs	CRR (revised volumes)	CRR auction bid fee	Market bids	ISC Trades	SCIDs
Gross volumes	519,946,950	475,167,832	-	591,726,863				
TOR modification	(9,276,859)	(5,967,482)	-	-				
Transfer TORs to separate category	-	(3,353,436)	3,353,436	-				
Exclude 2/3 of supply in year 1 of phase-in	-	(156,379,655)	-	-				
Additional CRR volumes	-	-	-	24,638,375				
Net volumes	510,670,092	309,467,260	3,353,436	616,365,238				
Number of CRR auction bids					480,276			
Number of market bids						26,893,996		
Number of Inter-SC trades							3,854,538	
Number of SCIDs								177
Rate per TOR (use 100% phase-in rate from year 3)			\$ 0.287497					
Fee per market bid						\$ 0.005		
Fee per CRR auction bid					\$ 1.00			
Monthly SCID fee								\$ 1,000
Annual SCID fee								\$ 12,000
Fee per Inter-SC trade							\$ 1.00	
Fee and charge revenue			\$ 964,103		\$ 480,276	\$ 134,470	\$ 3,854,538	\$ 2,124,000

Rates for Year 1	Market Service rate (Award)	Systems Operations rate (Flow)	Flow TORs	CRR	CRR auction bid fee	Market bids	ISC Trades	SCIDs	Total
Revenue Requirement 2010	\$ 52,756,000	\$ 134,883,000	\$ -	\$ 7,456,000					\$ 195,095,000
Actual GMC collected									195,110,642
Difference									(15,642)
% of revenue requirement	27%	69%	0%	4%	0%	0%	0%	0%	100%
Revenue Requirement	\$ 52,756,000	\$ 134,883,000	\$ -	\$ 7,456,000		\$ -			\$ 195,095,000
Adjust Revenue requirement to actual	\$ 4,230	\$ 10,814	\$ -	\$ 598	\$ -	\$ -	\$ -	\$ -	\$ 15,642
Adjusted revenue requirement	\$ 52,760,230	\$ 134,893,814	\$ -	\$ 7,456,598	\$ -	\$ -	\$ -	\$ -	\$ 195,110,642
Allocate TORs	\$ -	\$ (964,103)	\$ 964,103	\$ -	\$ -	\$ -	\$ -	\$ -	\$ -
Allocate market bid fees	\$ (134,470)	\$ -	\$ -	\$ -	\$ -	\$ 134,470	\$ -	\$ -	\$ -
Allocate CRR bid fees	\$ -	\$ -	\$ -	\$ (480,276)	\$ 480,276	\$ -	\$ -	\$ -	\$ -
Allocate SCID fee	\$ (3,854,538)	\$ -	\$ -	\$ -	\$ -	\$ -	\$ 3,854,538	\$ -	\$ -
Allocate inter-SC trade fee	\$ (2,124,000)	\$ -	\$ -	\$ -	\$ -	\$ -	\$ -	\$ 2,124,000	\$ -
Revenue requirement for rates	\$ 46,647,222	\$ 133,929,711	\$ 964,103	\$ 6,976,322	\$ 480,276	\$ 134,470	\$ 3,854,538	\$ 2,124,000	\$ 195,110,642
Volume Jun-09 to May-10	510,670,092	309,467,260	3,353,436	616,365,238	480,276	26,893,996	3,854,538	177	
Rates	\$ 0.091345	\$ 0.432775	\$ 0.287497	\$ 0.011318	\$ 1.00	\$ 0.005	\$ 1.00	\$12,000	

Summary of Volumes for Year 1	Generation	Imports	Load	Exports	Total Volume	Separate TOR category
Market Services - Awards						
Gross volumes	201,028,000	81,946,538	227,791,195	9,181,218	519,946,950	-
Exclude TORs	(1,180,919)	(4,569,078)	(247,263)	(3,279,599)	(9,276,859)	-
Net volumes	199,847,081	77,377,460	227,543,931	5,901,620	510,670,092	-
System Operations - Flows						
Gross volumes	170,925,422	69,416,225	226,000,481	8,825,705	475,167,832	-
Exclude TORs	(1,180,919)	(4,591,246)	(195,318)	-	(5,967,482)	-
Transfer TORs to separate category	-	-	(51,946)	(3,301,490)	(3,353,436)	3,353,436
Remove 2/3 of supply	(113,163,002)	(43,216,653)	-	-	(156,379,655)	-
Net volumes	56,581,501	21,608,326	225,753,217	5,524,215	309,467,260	3,353,436

year 2 rates

Proposed GMC modified for TORs

Phase-in of supply into System Operations over 3 years: Year 2 - Include 2/3 of supply (exclude 1/3 of supply)

Comparison Period Jun-09 to May-10

Revised GMC Rates								
Units Jun-09 to May-10	Market Service rate (Award)	Systems Operations rate	Flow TORs	CRR (revised volumes)	CRR auction bid fee	Market bids	ISC Trades	SCIDs
Gross volumes	519,946,950	475,167,832	-	591,726,863				
TOR modification	(9,276,859)	(5,967,482)	-	-				
Transfer TORs to separate category	-	(3,353,436)	3,353,436	-				
Exclude 1/3 of supply in year 2 of phase-in	-	(78,189,827)	-	-				
Additional CRR volumes	-	-	-	24,638,375				
Net volumes	510,670,092	387,657,087	3,353,436	616,365,238				
Number of CRR auction bids					480,276			
Number of market bids						26,893,996		
Number of Inter-SC trades							3,854,538	
Number of SCIDs								177
Rate per TOR (use 100% phase-in rate from year 3)			\$ 0.287497					
Fee per market bid						\$ 0.005		
Fee per CRR auction bid					\$ 1.00			
Monthly SCID fee								\$ 1,000
Annual SCID fee								\$ 12,000
Fee per Inter-SC trade							\$ 1.00	
Fee and charge revenue			\$ 964,103		\$ 480,276	\$ 134,470	\$ 3,854,538	\$ 2,124,000

Rates for Year 2	Market Service rate (Award)	Systems Operations rate	Flow TORs	CRR	CRR auction bid fee	Market bids	ISC Trades	SCIDs	Total
Revenue Requirement	\$ 52,756,000	\$ 134,883,000	\$ -	\$ 7,456,000					\$ 195,095,000
Actual									195,110,642
Difference									(15,642)
% of revenue requirement	27%	69%	0%	4%	0%	0%	0%	0%	100%
Revenue Requirement	\$ 52,756,000	\$ 134,883,000	\$ -	\$ 7,456,000		\$ -			\$ 195,095,000
Adjust Revenue requirement to actual	\$ 4,230	\$ 10,814	\$ -	\$ 598	\$ -	\$ -	\$ -	\$ -	\$ 15,642
Adjusted revenue requirement	\$ 52,760,230	\$ 134,893,814	\$ -	\$ 7,456,598	\$ -	\$ -	\$ -	\$ -	\$ 195,110,642
Allocate TORs	\$ -	\$ (964,103)	\$ 964,103	\$ -	\$ -	\$ -	\$ -	\$ -	\$ -
Allocate market bid fees	\$ (134,470)	\$ -	\$ -	\$ -	\$ -	\$ 134,470	\$ -	\$ -	\$ -
Allocate CRR bid fees	\$ -	\$ -	\$ -	\$ (480,276)	\$ 480,276	\$ -	\$ -	\$ -	\$ -
Allocate SCID fee	\$ (3,854,538)	\$ -	\$ -	\$ -	\$ -	\$ -	\$ 3,854,538	\$ -	\$ -
Allocate inter-SC trade fee	\$ (2,124,000)	\$ -	\$ -	\$ -	\$ -	\$ -	\$ -	\$ 2,124,000	\$ -
Revenue requirement for rates	\$ 46,647,222	\$ 133,929,711	\$ 964,103	\$ 6,976,322	\$ 480,276	\$ 134,470	\$ 3,854,538	\$ 2,124,000	\$ 195,110,642
Volume Jun-09 to May-10	510,670,092	387,657,087	3,353,436	616,365,238	480,276	26,893,996	3,854,538	177	
Rates	\$ 0.091345	\$ 0.345485	\$ 0.287497	\$ 0.011318	\$ 1.00	\$ 0.005	\$ 1.00	\$12,000	

Summary of Voliumes for Year 2	Generation	Imports	Load	Exports	Total Volume	Separate TOR category
Market Services - Awards						
Gross volumes	201,028,000	81,946,538	227,791,195	9,181,218	519,946,950	-
Exclude TORs	(1,180,919)	(4,569,078)	(247,263)	(3,279,599)	(9,276,859)	-
Net volumes	199,847,081	77,377,460	227,543,931	5,901,620	510,670,092	-
	-	-	-	-	-	-
System Operations - Flows						
Gross volumes	170,925,422	69,416,225	226,000,481	8,825,705	475,167,832	-
Exclude TORs	(1,180,919)	(4,591,246)	(195,318)	-	(5,967,482)	-
Transfer TORs to separate category	-	-	(51,946)	(3,301,490)	(3,353,436)	3,353,436
Remove 2/3 of supply	(56,581,501)	(21,608,326)	-	-	(78,189,827)	-
Net volumes	113,163,002	43,216,653	225,753,217	5,524,215	387,657,088	3,353,436

year 3 rates

Proposed GMC modified for TORs

Phase-in of supply into System Operations over 3 years: Year 3 - Include 100% of supply

Comparison Period Jun-09 to May-10

Revised GMC Rates							
Units Jun-09 to May-10	Market Service rate (Award)	Systems Operations rate (Flow)	CRR (revised volumes)	CRR auction bid fee	Market bids	ISC Trades	SCIDs
Gross volumes	519,946,950	475,167,832	591,726,863				
TOR modification	(9,276,859)	(5,967,482)	-				
Additional CRR volumes	-	-	24,638,375				
Net volumes	510,670,092	469,200,350	616,365,238				
Number of CRR auction bids				480,276			
Number of market bids					26,893,996		
Number of Inter-SC trades						3,854,538	
Number of SCIDs							177
Fee per market bid					\$ 0.005		
Fee per CRR auction bid				\$ 1.00			
Monthly SCID fee							\$ 1,000
Annual SCID fee							\$ 12,000
Fee per Inter-SC trade						\$ 1.00	
Fee and charge revenue				\$ 480,276	\$ 134,470	\$ 3,854,538	\$ 2,124,000

Rates	Market Service rate (Award)	Systems Operations rate (Flow)	CRR	CRR auction bid fee	Market bids	ISC Trades	SCIDs	Total
Revenue Requirement	\$ 52,756,000	\$ 134,883,000	\$ 7,456,000					\$ 195,095,000
Actual								195,110,642
Difference								(15,642)
% of revenue requirement	27%	69%	4%	0%	0%	0%	0%	100%
Revenue Requirement	\$ 52,756,000	\$ 134,883,000	\$ 7,456,000		\$ -			\$ 195,095,000
Adjust Revenue requirement to actual	\$ 4,230	\$ 10,814	\$ 598	\$ -	\$ -	\$ -	\$ -	\$ 15,642
Adjusted revenue requirement	\$ 52,760,230	\$ 134,893,814	\$ 7,456,598	\$ -	\$ -	\$ -	\$ -	\$ 195,110,642
Allocate market bid fees	\$ (134,470)	\$ -	\$ -	\$ -	\$ 134,470	\$ -	\$ -	\$ -
Allocate CRR bid fees	\$ -	\$ -	\$ (480,276)	\$ 480,276	\$ -	\$ -	\$ -	\$ -
Allocate SCID fee	\$ (3,854,538)	\$ -	\$ -	\$ -	\$ -	\$ 3,854,538	\$ -	\$ -
Allocate inter-SC trade fee	\$ (2,124,000)	\$ -	\$ -	\$ -	\$ -	\$ -	\$ 2,124,000	\$ -
Revenue requirement for rates	\$ 46,647,222	\$ 134,893,814	\$ 6,976,322	\$ 480,276	\$ 134,470	\$ 3,854,538	\$ 2,124,000	\$ 195,110,642
Volume Jun-09 to May-10	510,670,092	469,200,350	616,365,238	480,276	26,893,996	3,854,538	177	
Rates	\$ 0.091345	\$ 0.287497	\$ 0.011318	\$ 1.00	\$ 0.005	\$ 1.00	\$12,000	

Summary of Volumes for Year 3	Generation	Imports	Load	Exports	Total Volume
Market Services - Awards					
Gross volumes	201,028,000	81,946,538	227,791,195	9,181,218	519,946,950
Exclude TORs	(1,180,919)	(4,569,078)	(247,263)	(3,279,599)	(9,276,859)
Net volumes	199,847,081	77,377,460	227,543,931	5,901,620	510,670,092
	-	-	-	-	-
System Operations - Flows					
Gross volumes	170,925,422	69,416,225	226,000,481	8,825,705	475,167,832
Exclude TORs	(1,180,919)	(4,591,246)	(195,318)	-	(5,967,482)
Net volumes	169,744,503	64,824,979	225,805,163	8,825,705	469,200,350

proposed GMC rates

Proposed GMC before modification for TORs
Comparison Period Jun-09 to May-10

Revised GMC Rates							
Units Jun-09 to May-10	market service rate (Award)	Systems Operations rate (Flow)	CRR	CRR auction bid fee	Market bids	ISC Trades	SCIDs
Gross volumes	519,946,950	475,167,832	591,726,863				
Number of CRR auction bids				480,276			
Number of market bids					26,893,996		
Number of Inter-SC trades						3,854,538	
Number of SCIDs							177
Fee per market bid					\$ 0.005		
Fee per CRR auction bid				\$ 1.00			
Monthly SCID fee							\$ 1,000
Annual SCID fee							\$ 12,000
Fee per Inter-SC trade						\$ 1.00	
Fee and charge revenue				\$ 480,276	\$ 134,470	\$ 3,854,538	\$ 2,124,000

Rates	market service rate (Award)	Systems Operations rate (Flow)	CRR	CRR auction bid fee	Market bids	ISC Trades	SCIDs	Total
Revenue Requirement	\$ 52,756,000	\$ 134,883,000	\$ 7,456,000					\$ 195,095,000
Actual								195,110,642
Difference								(15,642)
% of revenue requirement	27%	69%	4%	0%	0%	0%	0%	100%
Revenue Requirement	\$ 52,756,000	\$ 134,883,000	\$ 7,456,000		\$ -			\$ 195,095,000
Adjust Revenue requirement to actual	\$ 4,230	\$ 10,814	\$ 598	\$ -	\$ -	\$ -	\$ -	\$ 15,642
Adjusted revenue requirement	\$ 52,760,230	\$ 134,893,814	\$ 7,456,598	\$ -	\$ -	\$ -	\$ -	\$ 195,110,642
Allocate market bid fees	\$ (134,470)	\$ -	\$ -	\$ -	\$ 134,470	\$ -	\$ -	\$ -
Allocate CRR bid fees	\$ -	\$ -	\$ (480,276)	\$ 480,276	\$ -	\$ -	\$ -	\$ -
Allocate SCID fees	\$ (3,854,538)	\$ -	\$ -	\$ -	\$ -	\$ 3,854,538	\$ -	\$ -
Allocate inter-SC trade fees	\$ (2,124,000)	\$ -	\$ -	\$ -	\$ -	\$ -	\$ 2,124,000	\$ -
Revenue requirement for rates	\$ 46,647,222	\$ 134,893,814	\$ 6,976,322	\$ 480,276	\$ 134,470	\$ 3,854,538	\$ 2,124,000	\$ 195,110,642
Volume Jun-09 to May-10	519,946,950	475,167,832	591,726,863	480,276	26,893,996	3,854,538	177	
Rates	\$ 0.089715	\$ 0.283887	\$ 0.011790	\$ 1.00	\$ 0.005	\$ 1.00	\$12,000	

Proposed GMC with adjustment for TORs and phase-in of supply into System operations over 3 years**Comparison of \$ amounts**

Customer Class	Existing GMC	Proposed GMC before TORs	Year 1 - Proposed GMC w/ TOR mod & 1/3 of supply	Year 2 - Proposed GMC w/ TORs & 2/3 of supply	Year 3 - Proposed GMC w/ TOR mod & 100% of supply
----------------	--------------	--------------------------	--	---	---

CRR	\$ 329,611	\$ 4,064,083	\$ 4,401,010	\$ 4,416,924	\$ 4,427,496
marketer / importer	\$ 30,984,042	\$ 20,615,828	\$ 18,460,414	\$ 19,822,224	\$ 20,726,877
muni	\$ 19,931,172	\$ 18,210,667	\$ 18,403,829	\$ 17,813,400	\$ 17,421,160
Other	\$ 5,112,170	\$ 4,244,727	\$ 3,908,184	\$ 4,137,424	\$ 4,289,708
supplier	\$ 17,199,407	\$ 21,098,206	\$ 15,007,468	\$ 18,793,002	\$ 21,307,760
IOU	\$ 121,554,240	\$ 126,877,244	\$ 134,929,356	\$ 130,127,303	\$ 126,937,158
Total	\$ 195,110,642	\$ 195,110,755	\$ 195,110,261	\$ 195,110,277	\$ 195,110,158

Customer Class	Market Services	System Operations	CRRs	Fees & charges	Total
----------------	-----------------	-------------------	------	----------------	-------

Components of Charges - Year 1

CRR	\$ 23,236	\$ 46,113	\$ 3,880,718	\$ 450,943	\$ 4,401,010
marketer / importer	\$ 5,093,613	\$ 10,823,969	\$ 441,302	\$ 2,101,530	\$ 18,460,414
muni	\$ 4,147,104	\$ 12,873,969	\$ 224,557	\$ 1,158,199	\$ 18,403,829
Other	\$ 883,258	\$ 2,303,455	\$ 67,889	\$ 653,582	\$ 3,908,184
supplier	\$ 5,154,197	\$ 8,401,430	\$ 51,388	\$ 1,400,452	\$ 15,007,468
IOU	\$ 31,345,751	\$ 100,444,860	\$ 2,310,168	\$ 828,576	\$ 134,929,356
Total	\$ 46,647,160	\$ 134,893,796	\$ 6,976,022	\$ 6,593,284	\$ 195,110,261

Components of Charges - Year 2

CRR	\$ 23,236	\$ 62,027	\$ 3,880,718	\$ 450,943	\$ 4,416,924
marketer / importer	\$ 5,093,613	\$ 12,185,779	\$ 441,302	\$ 2,101,530	\$ 19,822,224
muni	\$ 4,147,104	\$ 12,283,539	\$ 224,557	\$ 1,158,199	\$ 17,813,400
Other	\$ 883,258	\$ 2,532,695	\$ 67,889	\$ 653,582	\$ 4,137,424
supplier	\$ 5,154,197	\$ 12,186,964	\$ 51,388	\$ 1,400,452	\$ 18,793,002
IOU	\$ 31,345,751	\$ 95,642,807	\$ 2,310,168	\$ 828,576	\$ 130,127,303
Total	\$ 46,647,160	\$ 134,893,811	\$ 6,976,022	\$ 6,593,284	\$ 195,110,277

Components of Charges - Year 3

CRR	\$ 23,236	\$ 72,599	\$ 3,880,718	\$ 450,943	\$ 4,427,496
marketer / importer	\$ 5,093,613	\$ 13,090,432	\$ 441,302	\$ 2,101,530	\$ 20,726,877
muni	\$ 4,147,104	\$ 11,891,299	\$ 224,557	\$ 1,158,199	\$ 17,421,160
Other	\$ 883,258	\$ 2,684,979	\$ 67,889	\$ 653,582	\$ 4,289,708
supplier	\$ 5,154,197	\$ 14,701,722	\$ 51,388	\$ 1,400,452	\$ 21,307,760
IOU	\$ 31,345,751	\$ 92,452,662	\$ 2,310,168	\$ 828,576	\$ 126,937,158
Total	\$ 46,647,160	\$ 134,893,693	\$ 6,976,022	\$ 6,593,284	\$ 195,110,158

Proposed GMC with adjustment for TORs and phase-in of supply into System operations over 3 years

Original proposal - Year 1

CRR	\$ 22,822	\$ 71,687	\$ 3,518,631	\$ 450,943	\$ 4,064,083
marketer / importer	\$ 5,047,522	\$ 12,996,716	\$ 470,059	\$ 2,101,530	\$ 20,615,828
muni	\$ 4,356,987	\$ 12,416,322	\$ 279,159	\$ 1,158,199	\$ 18,210,667
Other	\$ 867,497	\$ 2,651,265	\$ 72,384	\$ 653,582	\$ 4,244,727
supplier	\$ 5,062,224	\$ 14,517,118	\$ 118,412	\$ 1,400,452	\$ 21,098,206
IOU	\$ 31,289,990	\$ 92,240,863	\$ 2,517,815	\$ 828,576	\$ 126,877,244
Total	\$ 46,647,041	\$ 134,893,970	\$ 6,976,460	\$ 6,593,284	\$ 195,110,755

Comparison of Volumes

Customer Class	Awards	Flows Year 1	Flows Year 2	Flows Year 3	CRRs	CRR auction bids	Market bids	ISC Trades
CRR	254,379	106,552	179,536	252,520	342,880,161	231,258	1,038	3,680
marketer / importer	55,762,359	25,094,165	35,313,289	45,532,413	38,991,167	70,927	7,215,076	1,358,528
muni	45,400,450	30,011,530	35,686,500	41,361,471	19,840,719	95,754	1,528,685	610,802
Other	9,669,470	5,322,523	7,330,839	9,339,155	5,998,298	20,908	432,471	318,512
supplier	56,425,611	19,412,928	35,274,944	51,136,959	4,540,371	15,454	10,181,255	974,092
IOU	343,157,822	232,872,997	277,225,414	321,577,832	204,114,522	45,975	7,535,471	588,924
Total	510,670,092	312,820,695	391,010,523	469,200,350	616,365,238	480,276	26,893,996	3,854,538

Comparison of \$ rates

Awards	Flows Year 1	Flows Year 2	Flows Year 3	CRRs	CRR auction bids	Market bids	ISC Trades	Monthly SCID Fee
\$ 0.091345	\$ 0.432775	\$ 0.345485	\$ 0.287497	\$ 0.011318	\$ 1.00	\$ 0.005	\$ 1.00	\$ 1,000

Customer Class	Existing GMC	Proposed GMC before TORs	Year 1 - Proposed GMC w/ TOR mod & 1/3 of supply	Year 2 - Proposed GMC w/ TOR mod & 2/3 of supply	Year 3 - Proposed GMC w/ TOR mod & 100% of supply
----------------	--------------	--------------------------	--	--	---

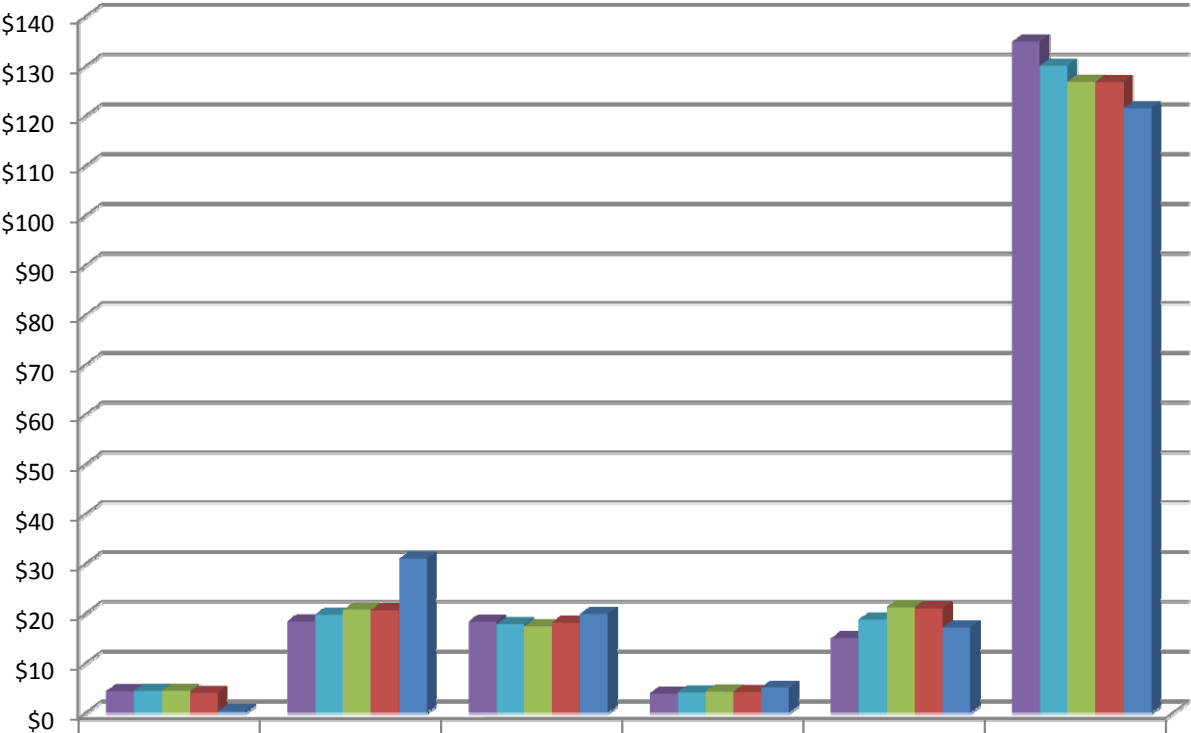
In millions

CRR	\$ 0.33	\$ 4.06	\$ 4.40	\$ 4.42	\$ 4.43
marketer / importer	\$ 30.98	\$ 20.62	\$ 18.46	\$ 19.82	\$ 20.73
muni	\$ 19.93	\$ 18.21	\$ 18.40	\$ 17.81	\$ 17.42
Other	\$ 5.11	\$ 4.24	\$ 3.91	\$ 4.14	\$ 4.29
supplier	\$ 17.20	\$ 21.10	\$ 15.01	\$ 18.79	\$ 21.31
IOU	\$ 121.55	\$ 126.88	\$ 134.93	\$ 130.13	\$ 126.94
Total	\$ 195.11	\$ 195.11	\$ 195.11	\$ 195.11	\$ 195.11

Year 3 Increase
(Decrease) from
existing GMC

\$ 4.10
\$ (10.25)
\$ (2.51)
\$ (0.82)
\$ 4.11
\$ 5.39
\$ 0.02

Comparison of GMC options - (\$ in millions)



Year 1 - Proposed GMC w/ TOR mod & 1/3 of supply	\$4.40	\$18.46	\$18.40	\$3.91	\$15.01	\$134.93
Year 2 - Proposed GMC w/ TOR mod & 2/3 of supply	\$4.42	\$19.82	\$17.81	\$4.14	\$18.79	\$130.13
Year 3 - Proposed GMC w/ TOR mod & 100% of supply	\$4.43	\$20.73	\$17.42	\$4.29	\$21.31	\$126.94
Proposed GMC before TORs	\$4.06	\$20.62	\$18.21	\$4.24	\$21.10	\$126.88
Existing GMC	\$0.33	\$30.98	\$19.93	\$5.11	\$17.20	\$121.55

Comparison of Proposed GMC modified for TORs and phase-in of 100% of supply in year 3 vs. Existing GMC - (\$ in millions)

