

The information contained in this report is preliminary and subject to change without notice. Any questions regarding this report should be directed to CAISO MarketAnalysis@caiso.com.

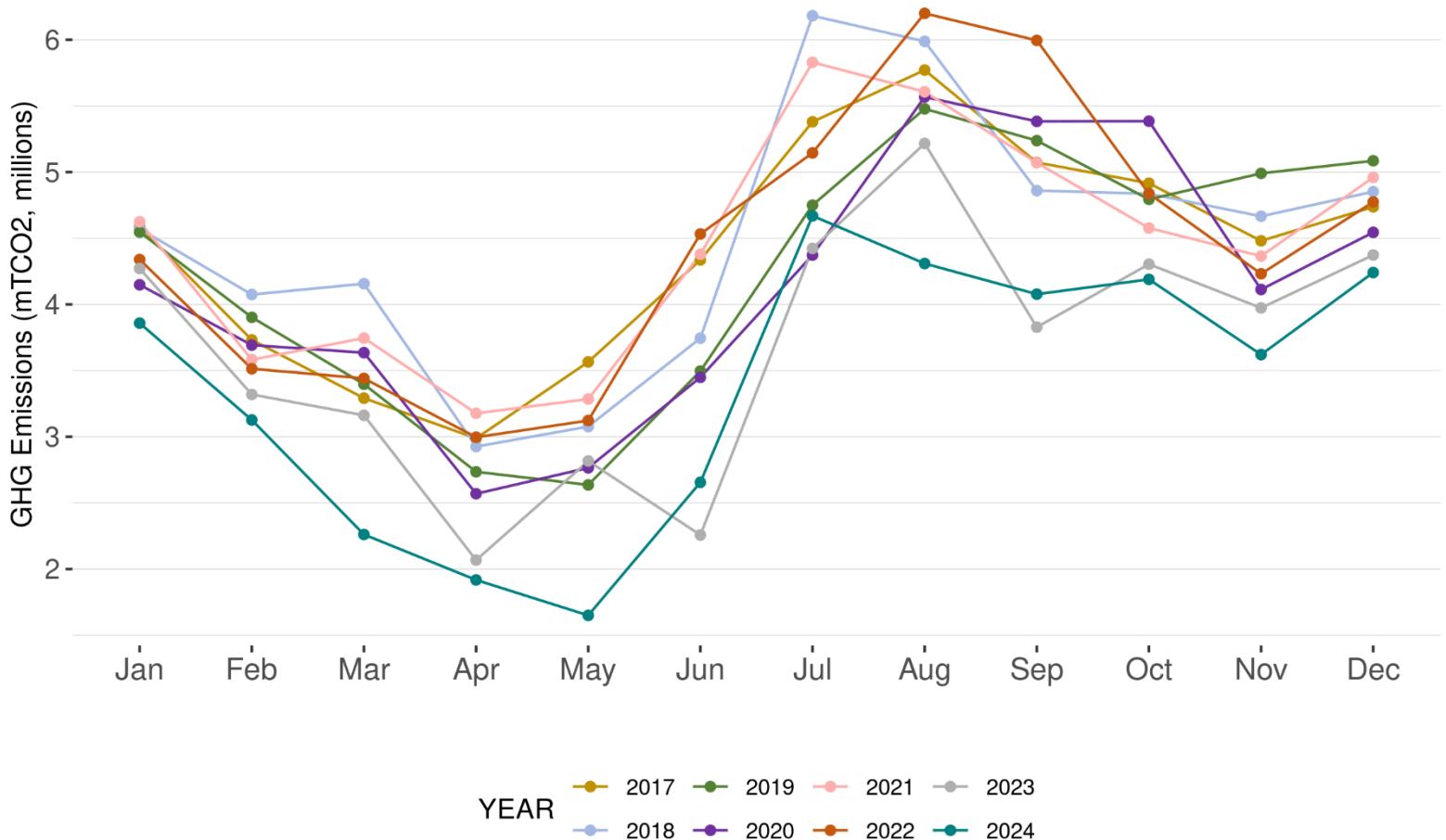
This report depicts greenhouse gas (GHG) emissions for the California Independent System Operator's (ISO) balancing authority area as a direct result of the dispatch of ISO internal resources and imports, including dynamic resources, serving ISO load.

The report reflects total GHG emissions to serve ISO loads.

FIGURE 1 and 2 – Total GHG emissions to serve ISO load. The table reflects the sum of GHG emissions from internal ISO dispatches and GHG emissions from imports serving ISO load through December 31, 2024.

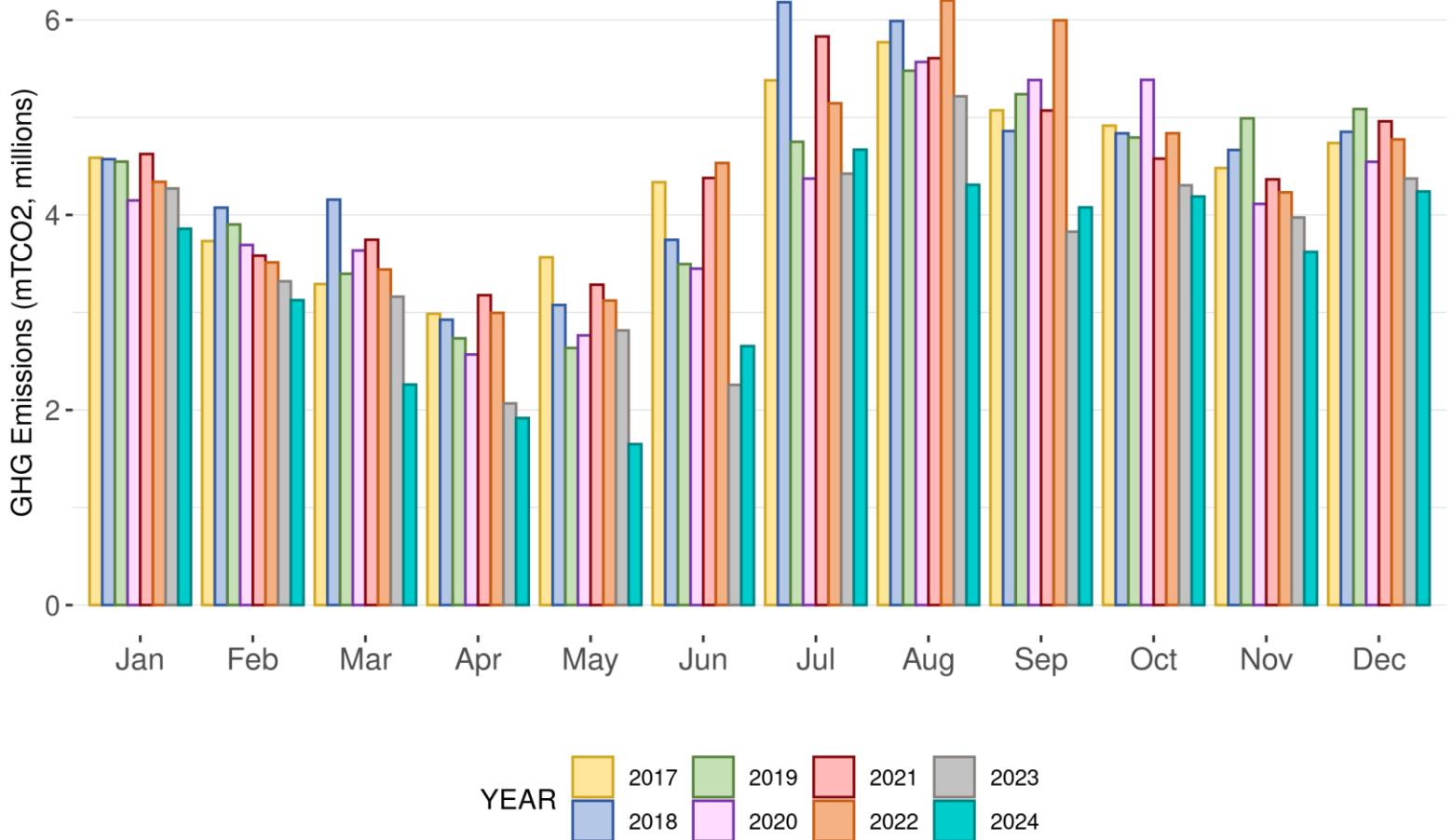
YTD (Jan - Dec) million mTCO ₂	2017	2018	2019	2020	2021	2022	2023	2024
GHG Emissions to serve ISO load	52.86	53.94	51.05	49.63	53.2	53.13	44.01	40.58

Figure 1 Total GHG emissions to serve ISO load



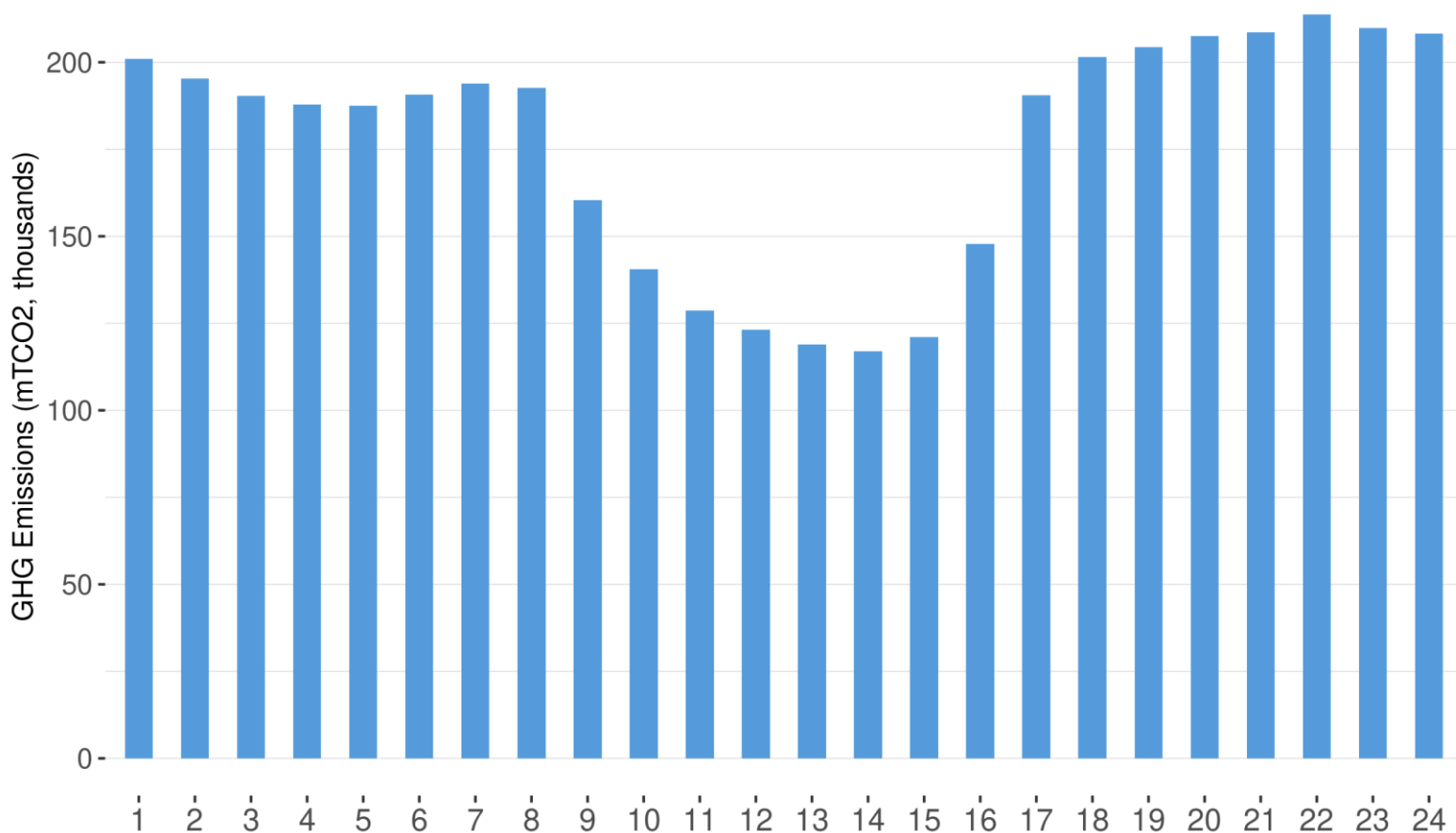
The information contained in this report is preliminary and subject to change without notice. Any questions regarding this report should be directed to CAISO MarketAnalysis@caiso.com.

Figure 2 Total GHG emissions to serve ISO load



The information contained in this report is preliminary and subject to change without notice. Any questions regarding this report should be directed to CAISO MarketAnalysis@caiso.com.

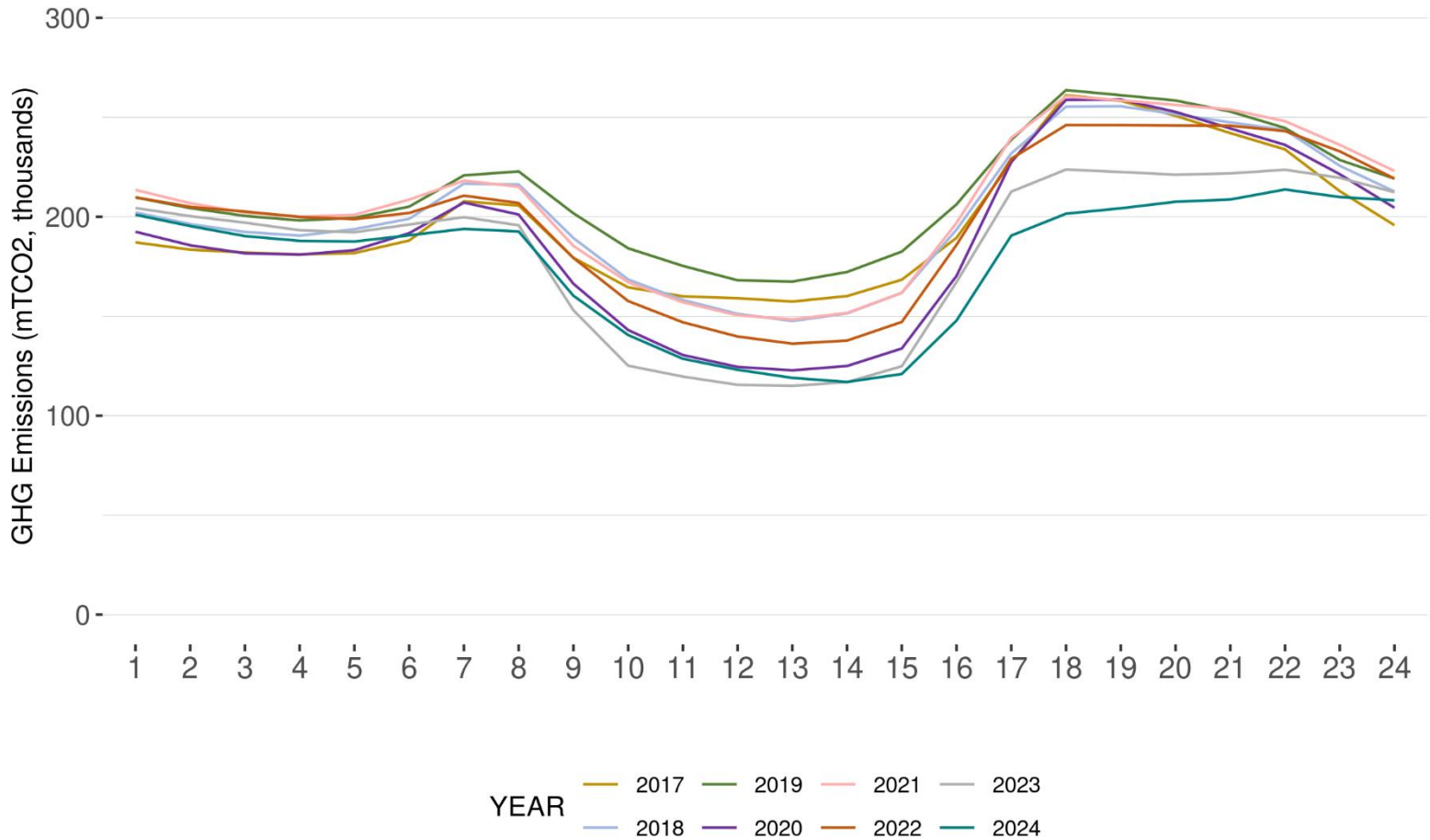
Figure 3 Hourly GHG emissions to serve ISO load for the month of December 2024



The above figure reflects the hourly sum of GHG emissions from internal ISO dispatches and GHG emissions from imports serving ISO load for the month of December 2024.

The information contained in this report is preliminary and subject to change without notice. Any questions regarding this report should be directed to CAISO MarketAnalysis@caiso.com.

Figure 4 Comparison of hourly GHG emissions to serve ISO for the month of December



The above figure reflects the hourly sum of GHG emissions from internal ISO dispatches and GHG emissions from imports serving ISO load for the month of December across the years from 2017 - 2024.