

The information contained in this report is preliminary and subject to change without notice. Any questions regarding this report should be directed to CAISO MarketAnalysis@caiso.com

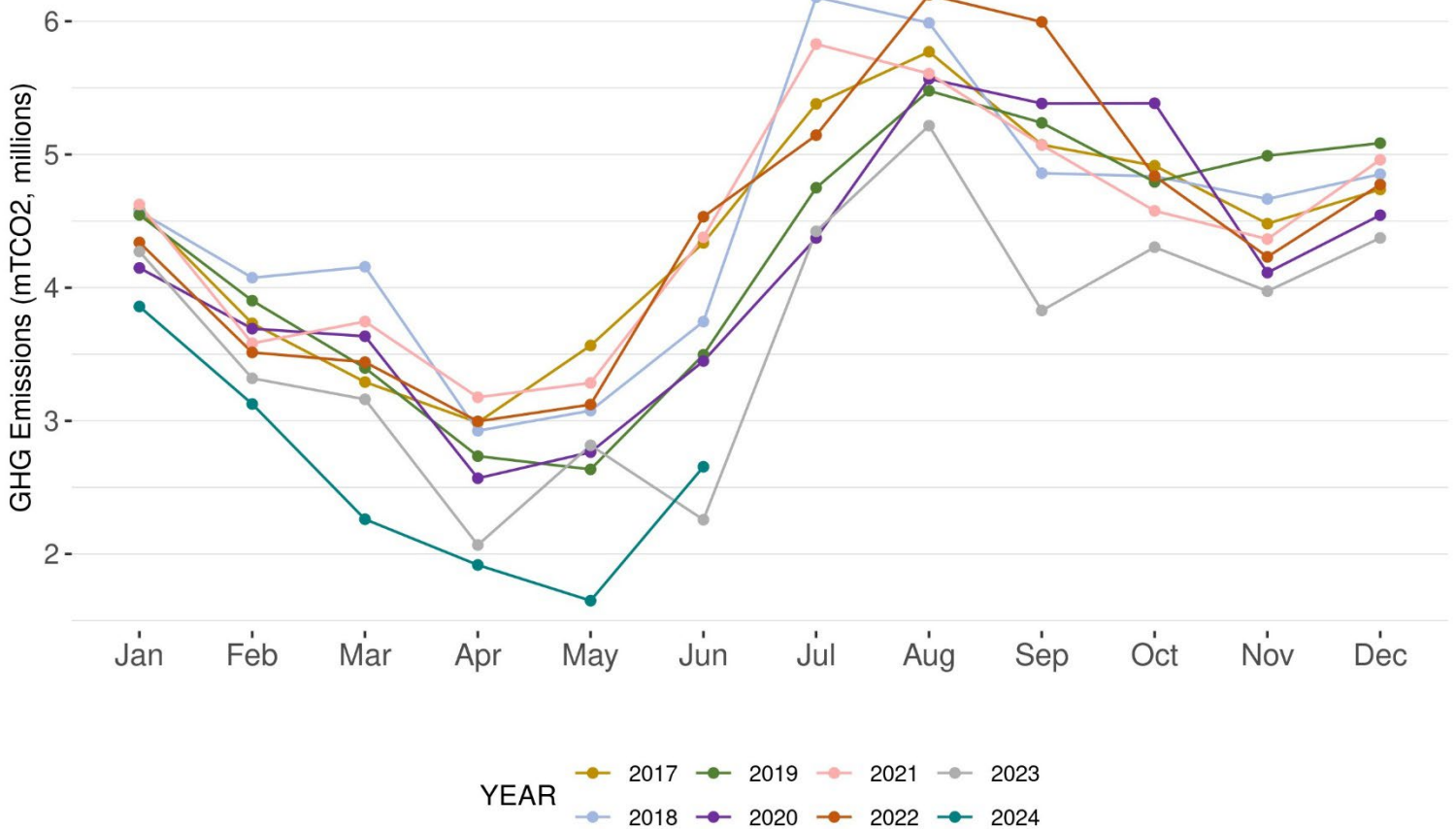
This report depicts greenhouse gas (GHG) emissions for the California Independent System Operator’s (ISO) balancing authority area as a direct result of the dispatch of ISO internal resources and imports, including dynamic resources, serving ISO load.

The report reflects total GHG emissions to serve ISO loads.

FIGURE 1 and 2 – Total GHG emissions to serve ISO load. This figure reflects the sum of GHG emissions from internal ISO dispatches and GHG emissions from imports serving ISO load through June 30, 2024.

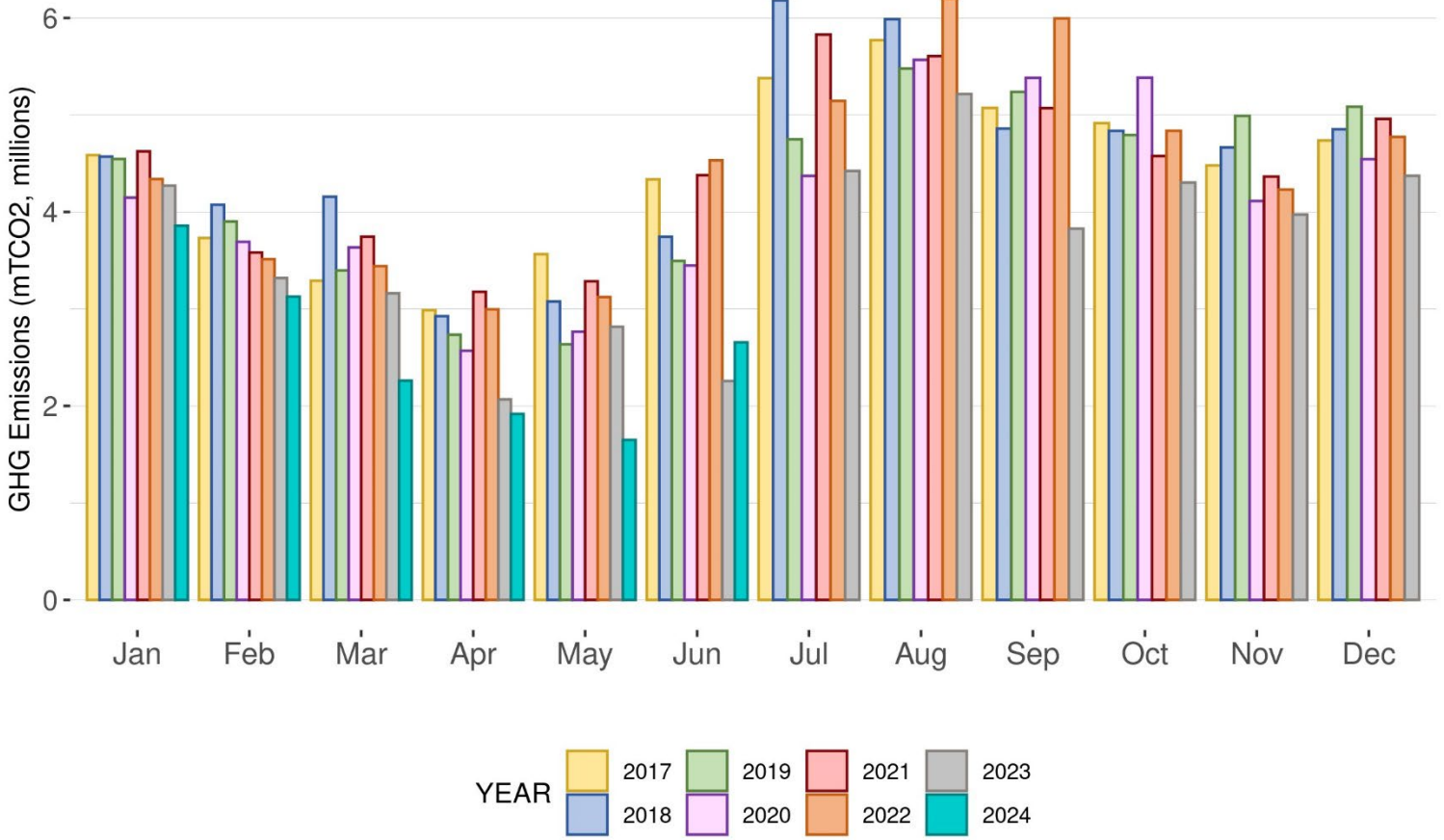
YTD (Jan - Jun) million mTCO2	2017	2018	2019	2020	2021	2022	2023	2024
GHG Emissions to serve ISO load	22.5	22.55	20.71	20.26	22.79	21.95	17.89	15.47

Figure 1 Total GHG emissions to serve ISO load



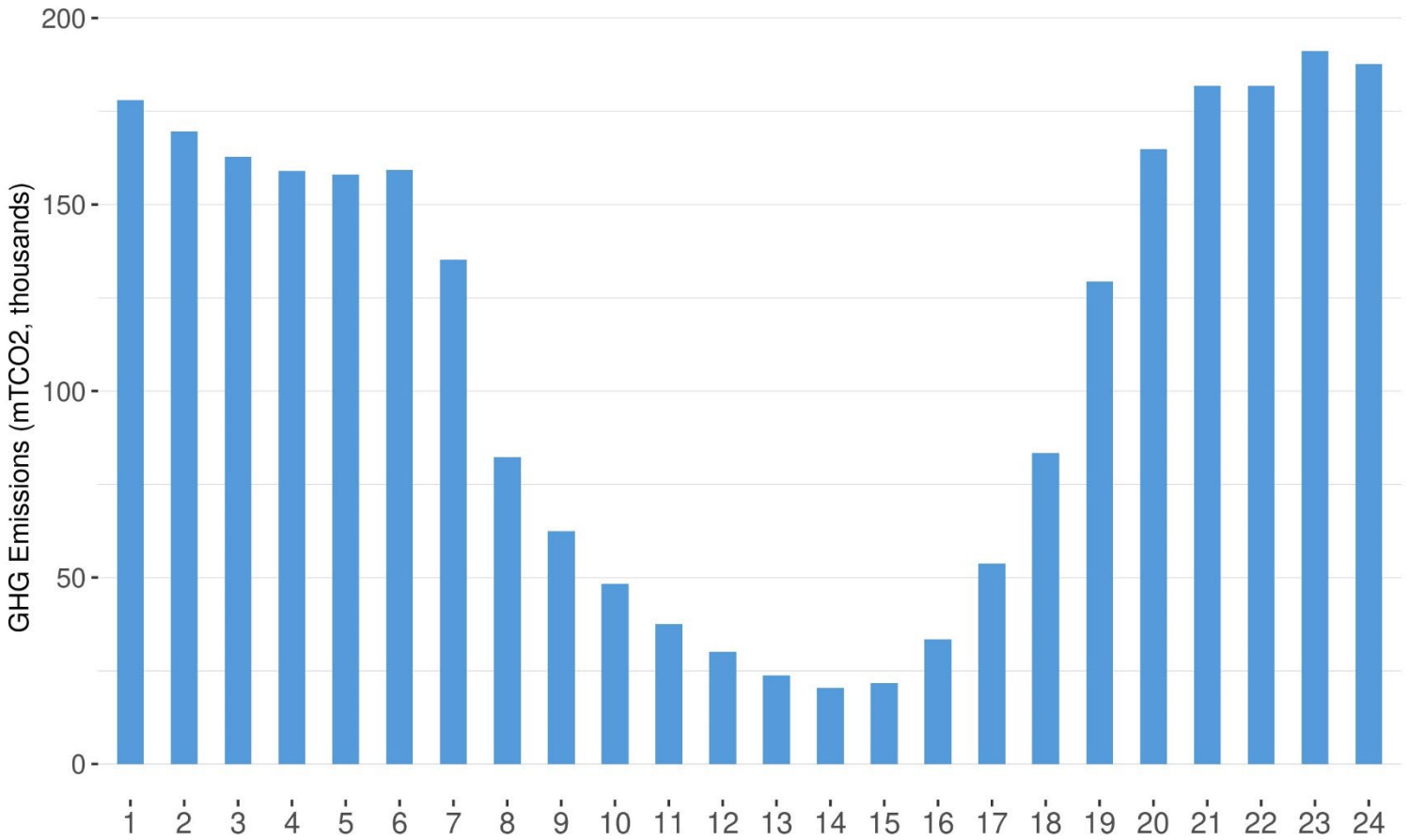
The information contained in this report is preliminary and subject to change without notice. Any questions regarding this report should be directed to CAISO MarketAnalysis@caiso.com

Figure 2 Total GHG emissions to serve ISO load



The information contained in this report is preliminary and subject to change without notice. Any questions regarding this report should be directed to CAISO MarketAnalysis@caiso.com

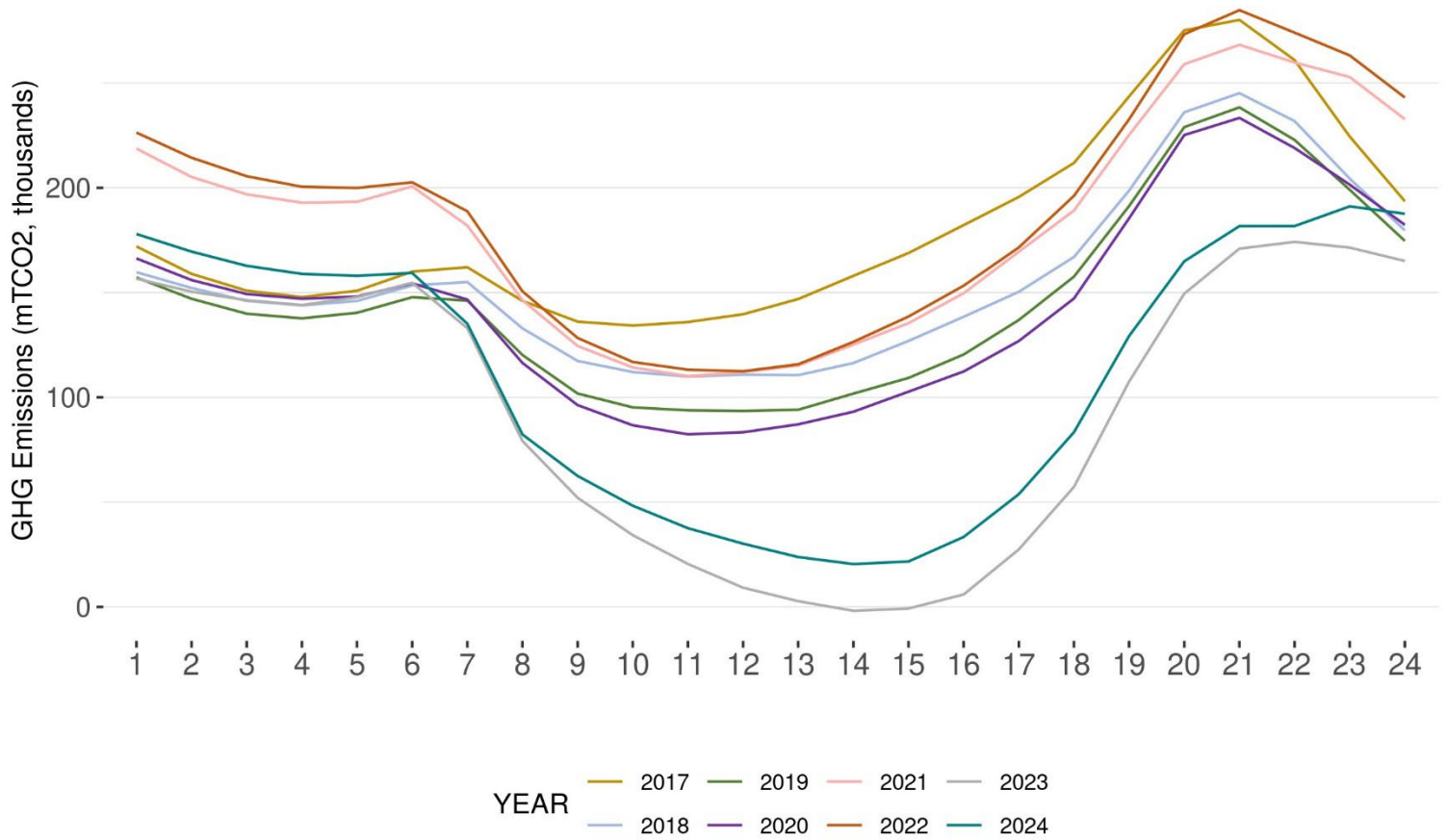
Figure 3 Hourly GHG emissions to serve ISO load for the month of June 2024



The above figure reflects the hourly sum of GHG emissions from internal ISO dispatches and GHG emissions from imports serving ISO load for the month of June 2024.

The information contained in this report is preliminary and subject to change without notice. Any questions regarding this report should be directed to CAISO MarketAnalysis@caiso.com

Figure 4 Comparison of hourly GHG emissions to serve ISO for the month of June



The above figure reflects the hourly sum of GHG emissions from internal ISO dispatches and GHG emissions from imports serving ISO load for the month of June across the years from 2017 - 2024.