

The information contained in this report is preliminary and subject to change without notice. Any questions regarding this report should be directed to CAISO [MarketAnalysis@caiso.com](mailto:MarketAnalysis@caiso.com).

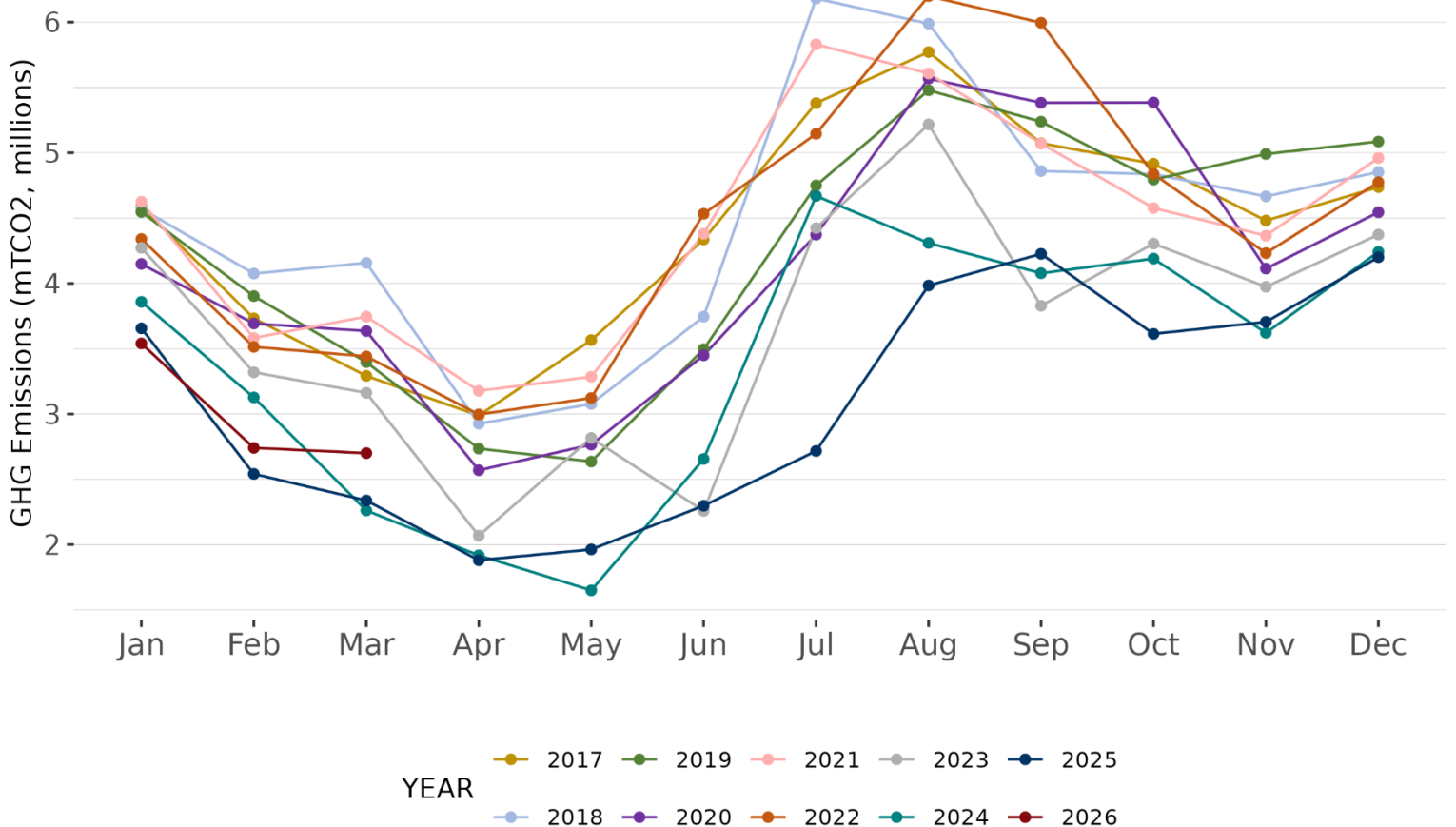
This report depicts greenhouse gas (GHG) emissions for the California Independent System Operator’s (ISO) balancing authority area as a direct result of the dispatch of ISO internal resources and imports, including dynamic resources, serving ISO load.

The report reflects total GHG emissions to serve ISO loads.

FIGURE 1 and 2 – Total GHG emissions to serve ISO load. The table reflects the sum of GHG emissions from internal ISO dispatches and GHG emissions from imports serving ISO load through March 31<sup>st</sup>, 2026.

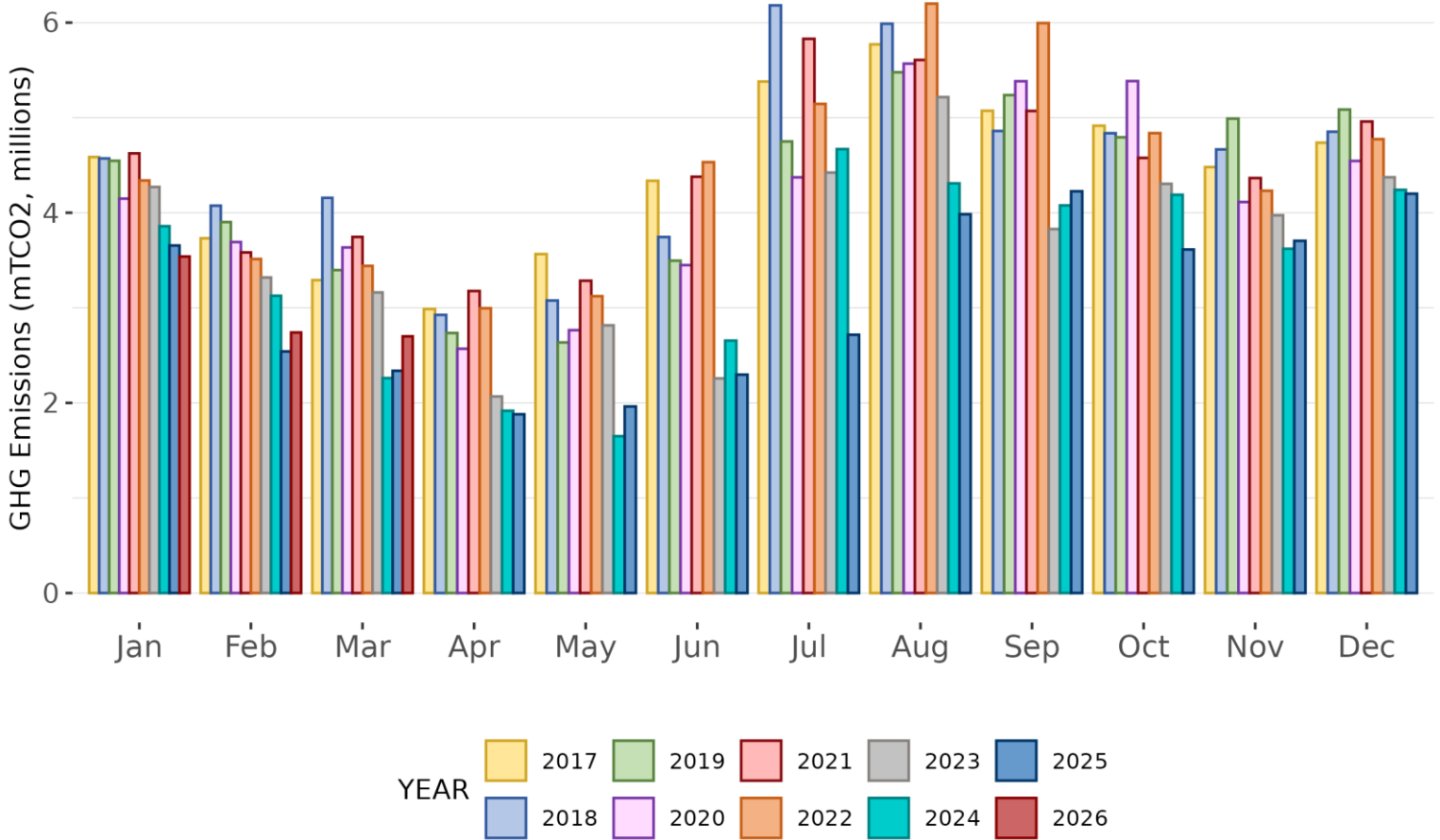
| YTD (Jan - Mar) million mTCO2   | 2017  | 2018 | 2019  | 2020  | 2021  | 2022  | 2023  | 2024 | 2025 | 2026 |
|---------------------------------|-------|------|-------|-------|-------|-------|-------|------|------|------|
| GHG Emissions to serve ISO load | 11.61 | 12.8 | 11.85 | 11.48 | 11.95 | 11.29 | 10.75 | 9.25 | 8.53 | 8.98 |

*Figure 1 Total GHG emissions to serve ISO load*



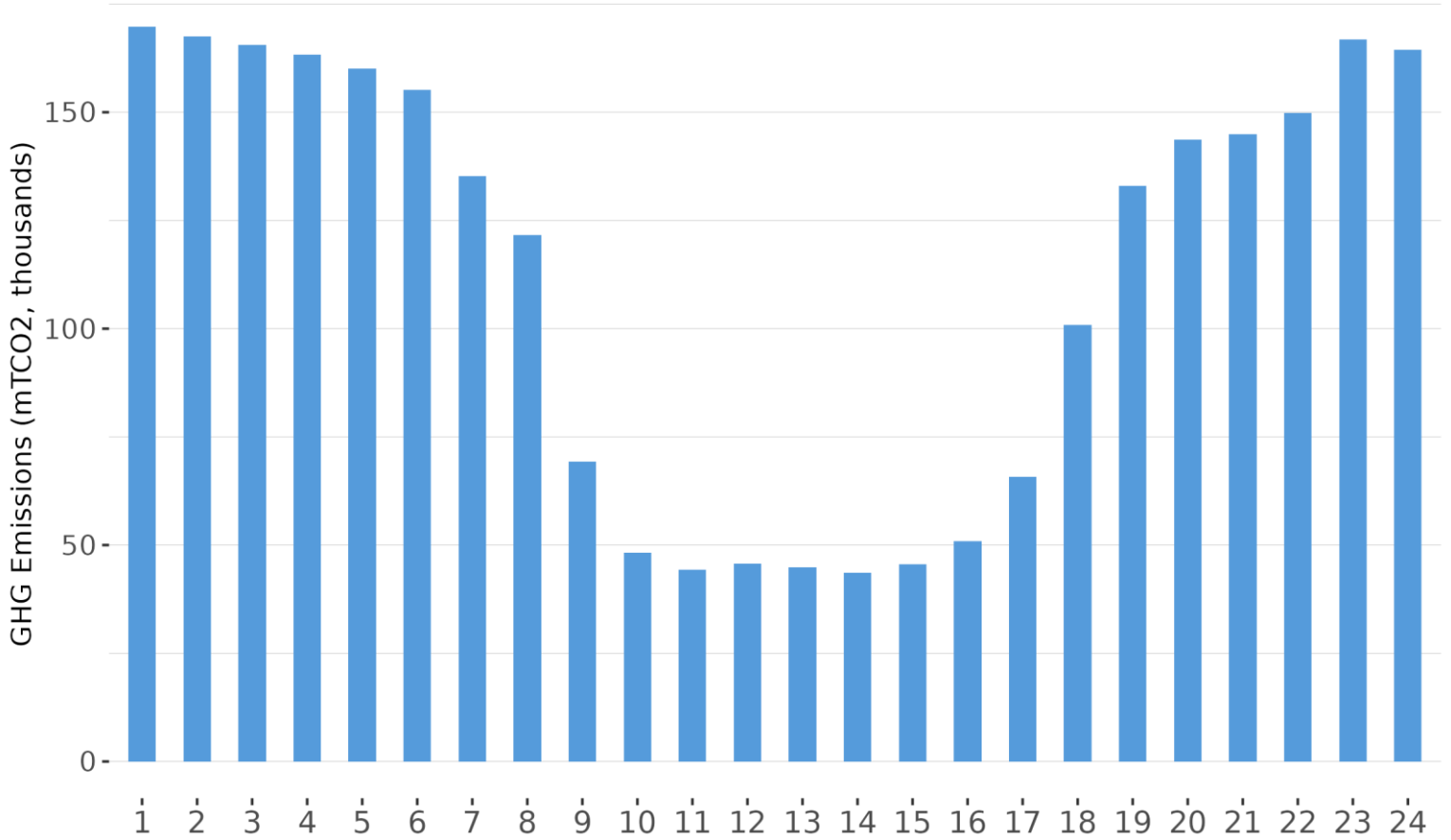
The information contained in this report is preliminary and subject to change without notice. Any questions regarding this report should be directed to CAISO [MarketAnalysis@caiso.com](mailto:MarketAnalysis@caiso.com).

Figure 2 Total GHG emissions to serve ISO load



The information contained in this report is preliminary and subject to change without notice. Any questions regarding this report should be directed to CAISO [MarketAnalysis@caiso.com](mailto:MarketAnalysis@caiso.com).

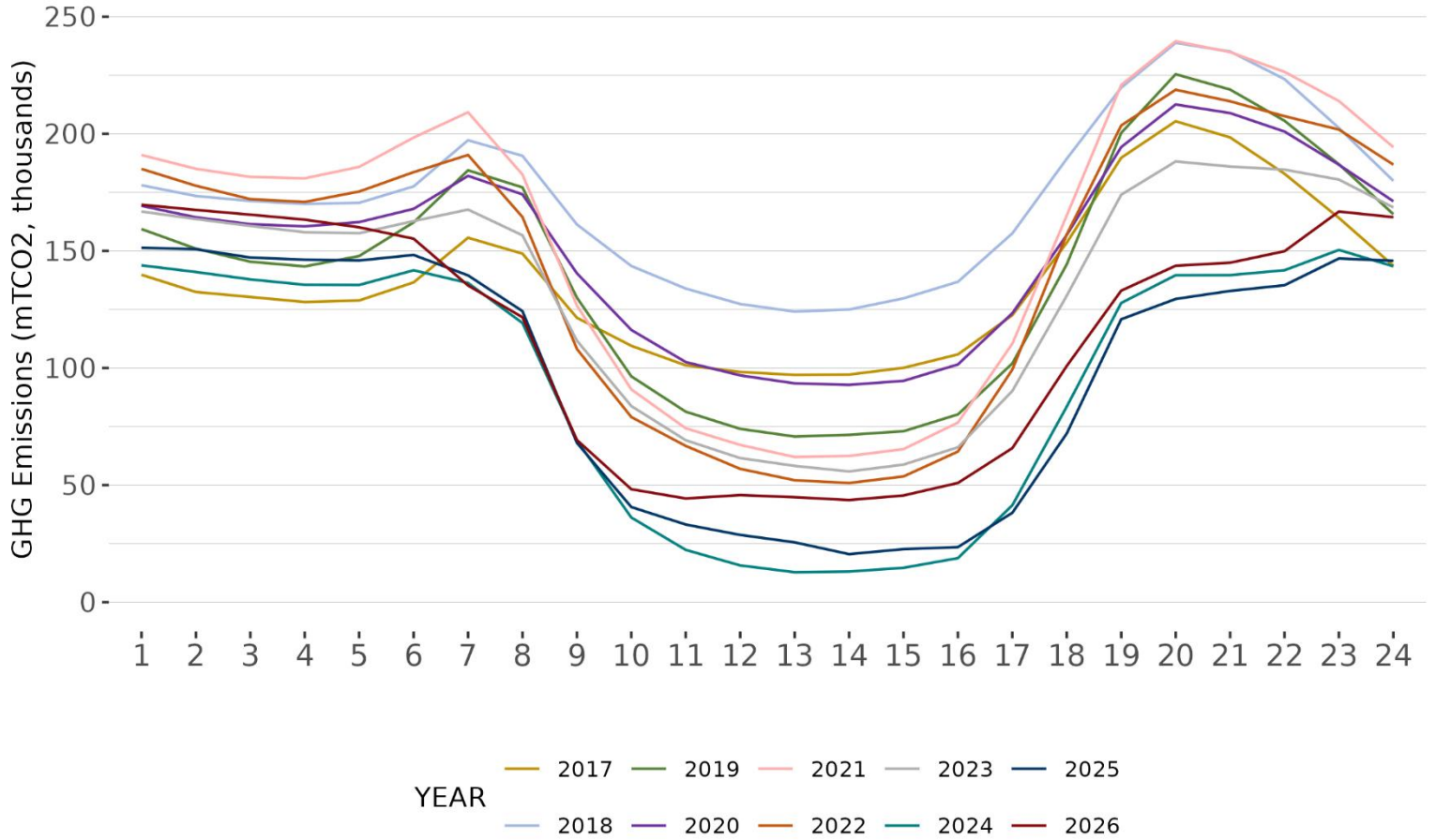
Figure 3 Hourly GHG emissions to serve ISO load for the month of March 2026



The above figure reflects the hourly sum of GHG emissions from internal ISO dispatches and GHG emissions from imports serving ISO load for the month of March 2026.

The information contained in this report is preliminary and subject to change without notice. Any questions regarding this report should be directed to CAISO [MarketAnalysis@caiso.com](mailto:MarketAnalysis@caiso.com).

Figure 4 Comparison of hourly GHG emissions to serve ISO for the month of March



The above figure reflects the hourly sum of GHG emissions from internal ISO dispatches and GHG emissions from imports serving ISO load for the month of March across the years from 2017 - 2026.