

The information contained in this report is preliminary and subject to change without notice. Any questions regarding this report should be directed to CAISO MarketAnalysis@caiso.com.

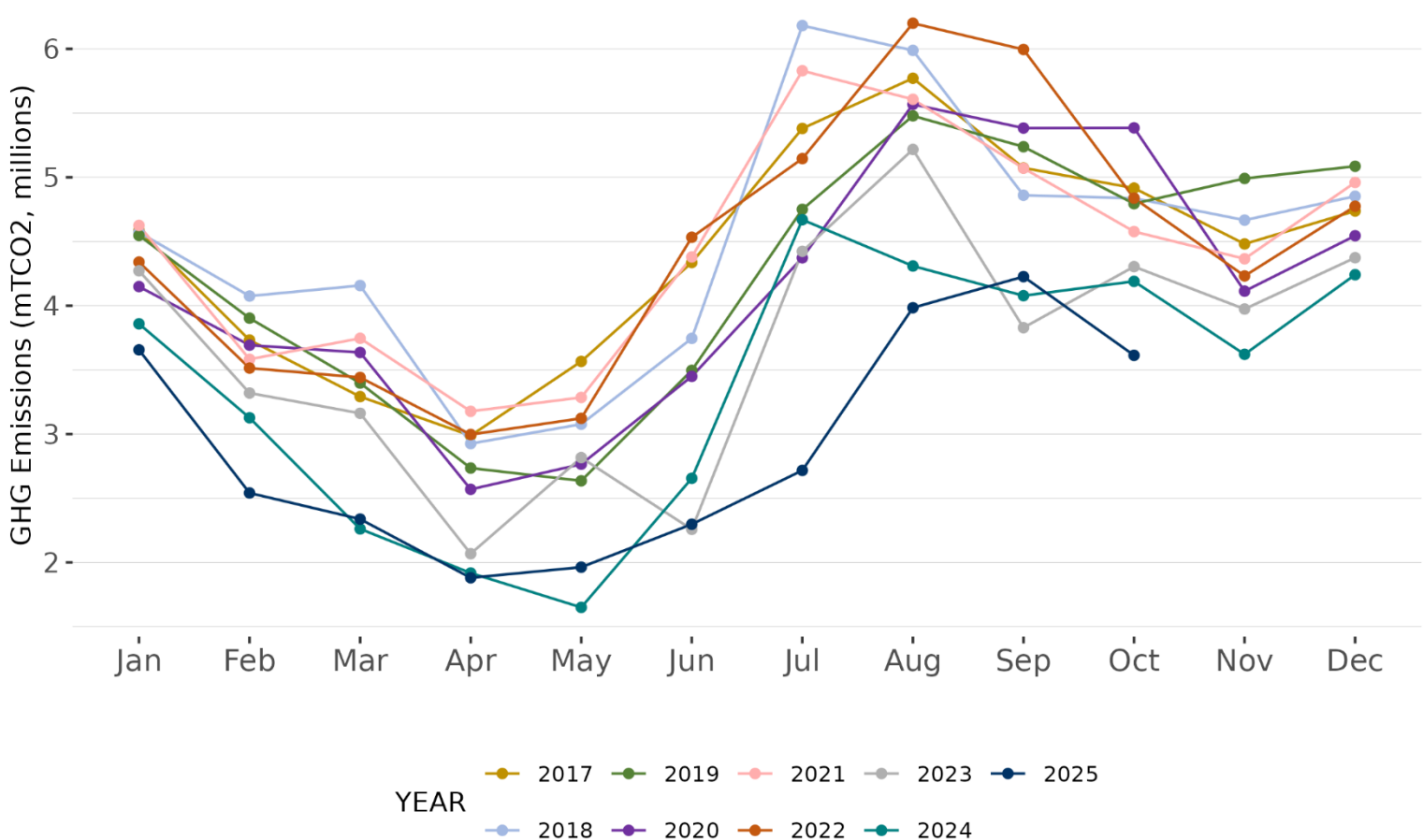
This report depicts greenhouse gas (GHG) emissions for the California Independent System Operator’s (ISO) balancing authority area as a direct result of the dispatch of ISO internal resources and imports, including dynamic resources, serving ISO load.

The report reflects total GHG emissions to serve ISO loads.

FIGURE 1 and 2 – Total GHG emissions to serve ISO load. The table reflects the sum of GHG emissions from internal ISO dispatches and GHG emissions from imports serving ISO load through October 31st, 2025.

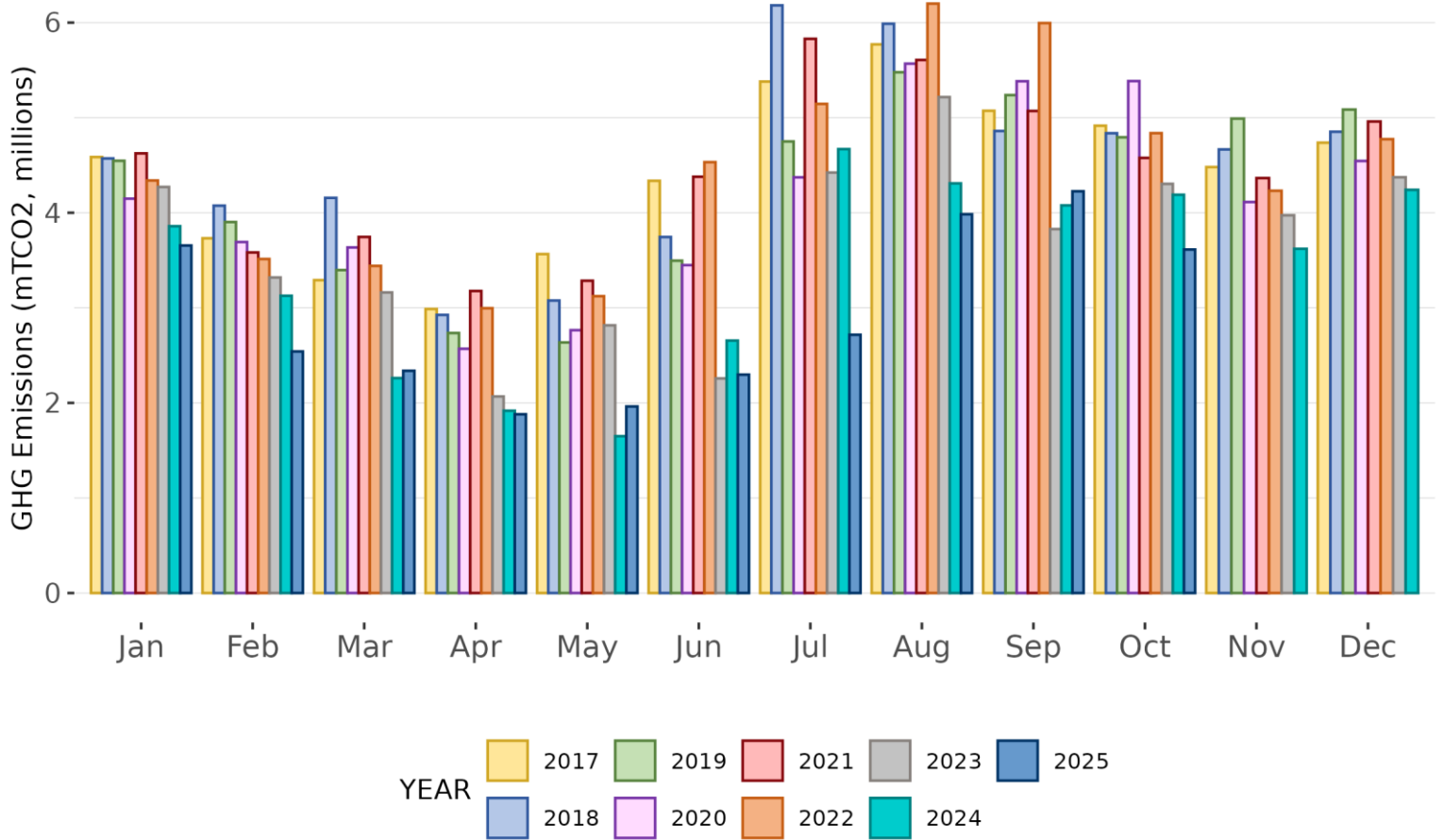
YTD (Jan - Oct) million mTCO2	2017	2018	2019	2020	2021	2022	2023	2024	2025
GHG Emissions to serve ISO load	43.64	44.42	40.97	40.97	43.88	44.12	35.67	32.71	29.22

Figure 1 Total GHG emissions to serve ISO load



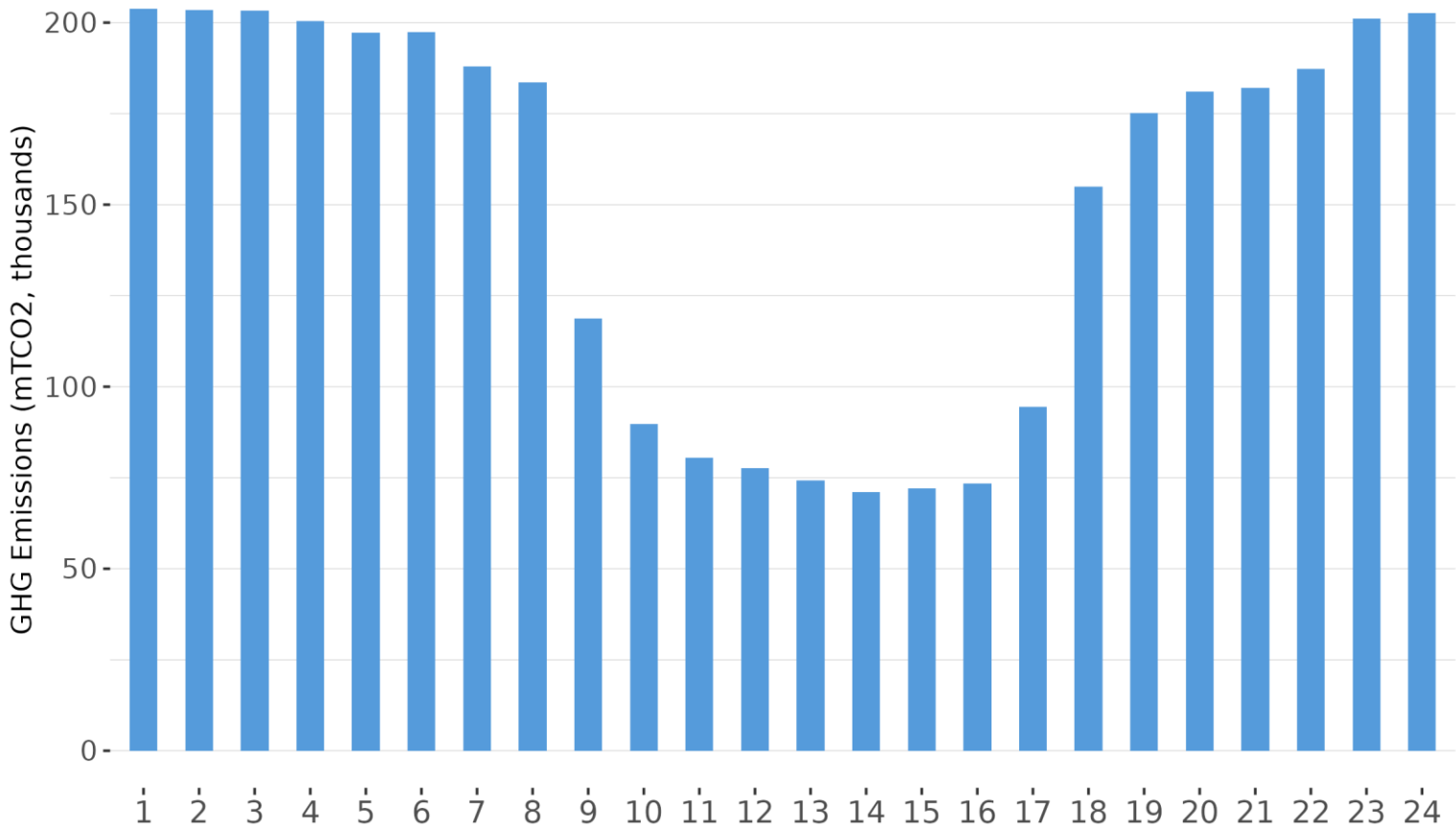
The information contained in this report is preliminary and subject to change without notice. Any questions regarding this report should be directed to CAISO MarketAnalysis@caiso.com.

Figure 2 Total GHG emissions to serve ISO load



The information contained in this report is preliminary and subject to change without notice. Any questions regarding this report should be directed to CAISO MarketAnalysis@caiso.com.

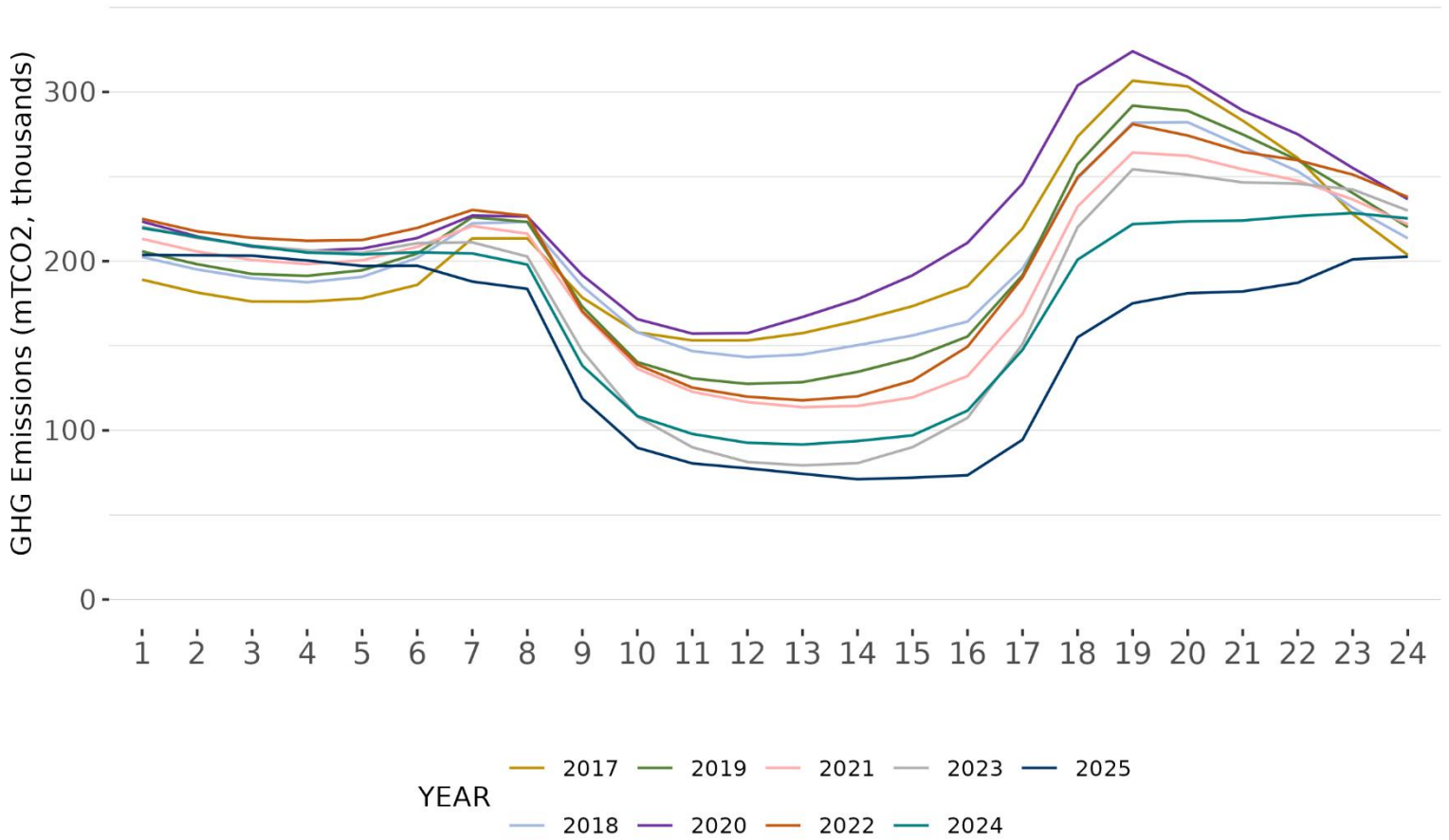
Figure 3 Hourly GHG emissions to serve ISO load for the month of October 2025



The above figure reflects the hourly sum of GHG emissions from internal ISO dispatches and GHG emissions from imports serving ISO load for the month of October 2025.

The information contained in this report is preliminary and subject to change without notice. Any questions regarding this report should be directed to CAISO MarketAnalysis@caiso.com.

Figure 4 Comparison of hourly GHG emissions to serve ISO for the month of October



The above figure reflects the hourly sum of GHG emissions from internal ISO dispatches and GHG emissions from imports serving ISO load for the month of October across the years from 2017 - 2025.