

EDAM Activation & Market Update

MAY 7, 2026

Important Reminders & Items being monitored

- GHG Price no longer reflected at resource node, but in OASIS: Prices > Shadow Prices > Green House Gas (GHG) Shadow Prices report (*see reference slide*)
- GHG Area in SIBR
 - WEIM Entities experienced issues due to not providing value in GHG Area for RT Bid submission; resulting in Rejected bids
- CRN Transactions
 - CRN transactions in Day-Ahead do not roll over as CRN into Real-Time, must be resubmitted
- IR and RC eligibility
- Tagging / Denied Tags
 - New transient TSR or not tagged correctly
 - CMRI Report: Day-Ahead > Day-Ahead Market Transfer System Resource Definition
- SIBR RT Bid Submission Validation Rules
 - Interplay with DAME products and AS products awards with SIBR RT validation rules
 - **Still under investigation**, community is encouraged to submit CIDI Tickets

Production Support

Customer Inquiry & Dispute System

Updates: Beginning 4/27/26, customers submitting production-related EDAM/DAME questions in CIDI should open an Inquiry case.

When opening, select the **Production** Functional Area and choose the **EDAM/DAME Inquiry** Submission Type to ensure proper routing.

Be sure to include key details (e.g., screenshots, certificate name) to help CAISO resolve issues efficiently.

CONTACT CUSTOMER SUPPORT
TELL US HOW WE CAN HELP

* SCID

* Functional Area
Production

Submission Type guidance for Production:

- Inquiry for Customer Service: General support inquiry
- Review for Price Correction: Specific Requests to review prices posted within last five days.
- Assistance Energy Designation Request: Process to opt in for AET for WEIM/EDAM Entities
- Manual Reference Level Change: Request for change of fuel costs
- Metering Inquiry: Meter Data Issues or Questions
- EDAM/DAME Inquiry: Questions related to the EDAM/DAME program, including go live and ongoing operations.

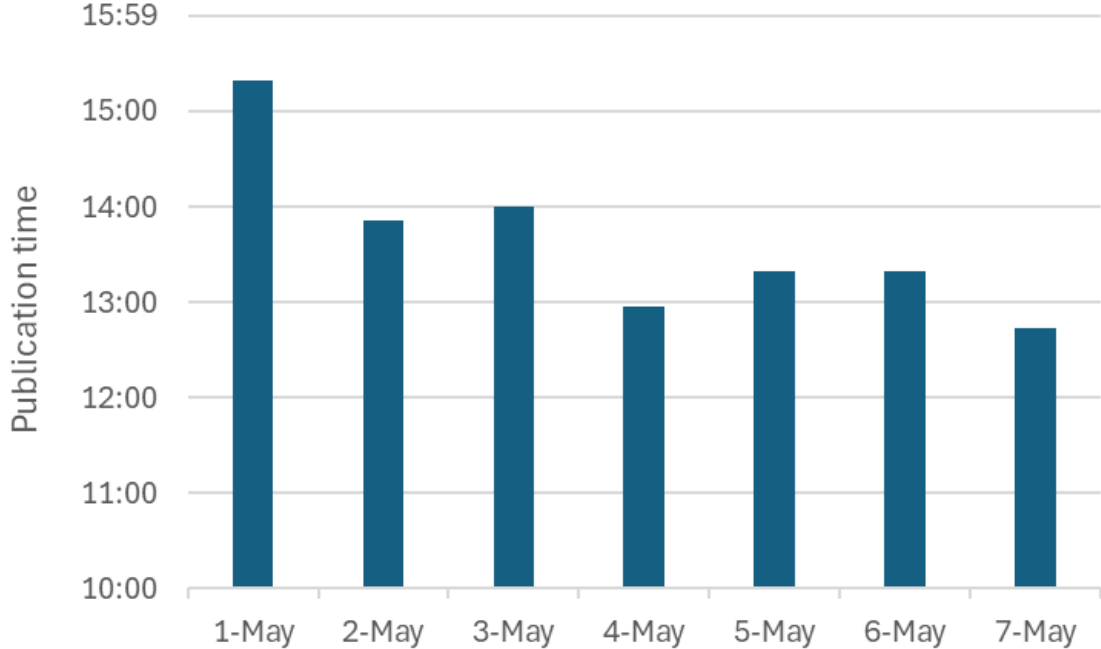
* Submission Type
--None--

--None--
Inquiry for Customer Service
Review for Price Correction
Assistance Energy Designation Request
Manual Reference Level Change Request
Metering Inquiry
EDAM / DAME Inquiry

01
02

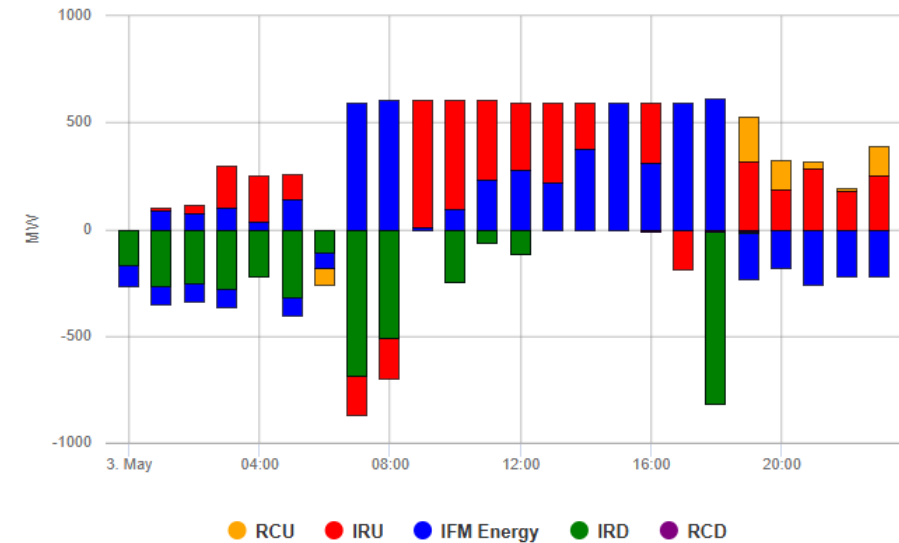
Proactive review and validation of the day-ahead market have produced robust results

- The ISO has proactively taken additional time to validate the day-ahead market in the first days of operation
- The ISO will continue to closely reviewing and validating results with the goal to publish by the 1pm deadline

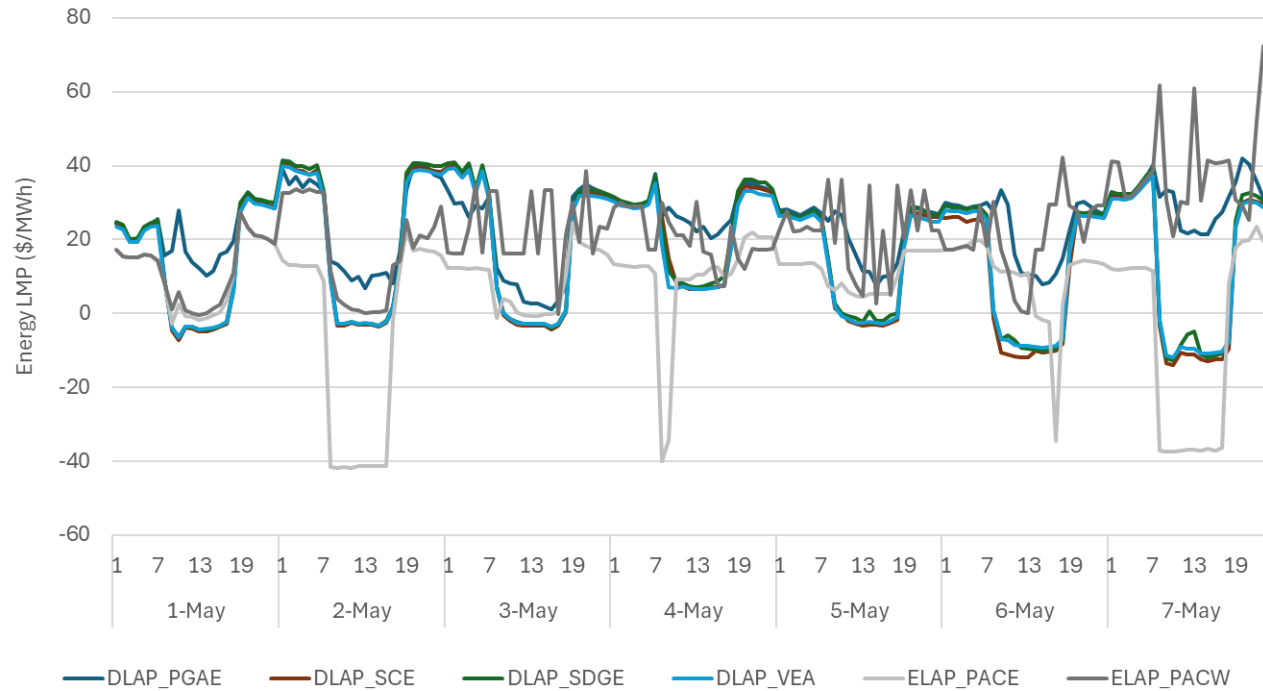


Economic diversity is being enabled by transfers, allowing to meet areas' needs at the lowest cost

- Up to 600MW of total transfers have been optimized through the day-ahead market
- Transfers allow not only energy but also imbalance reserves and reliability capacity to be met at the lowest cost
- The CAISO and PACE areas passed 100 percent of the time the resource sufficiency evaluation while PACW passed over 97 percent of the time



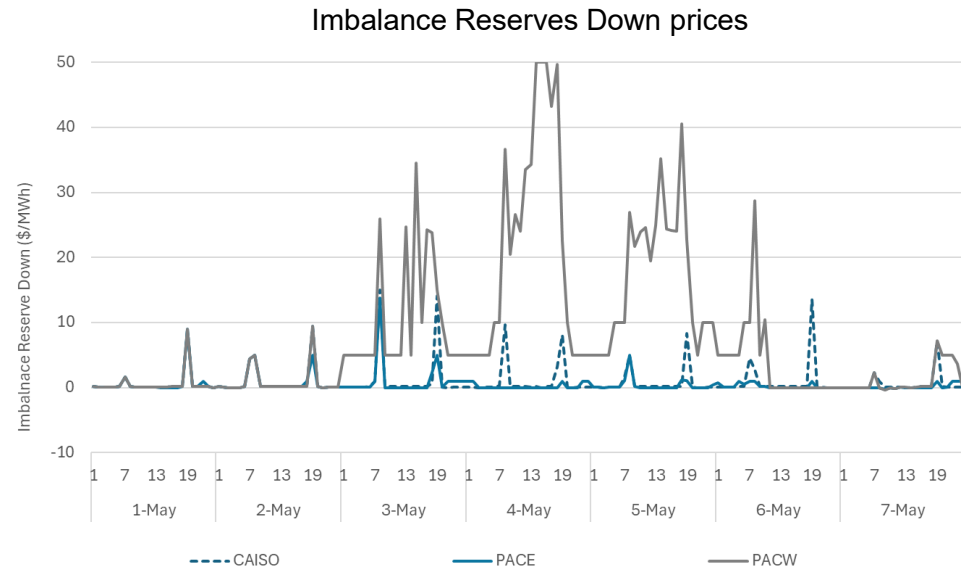
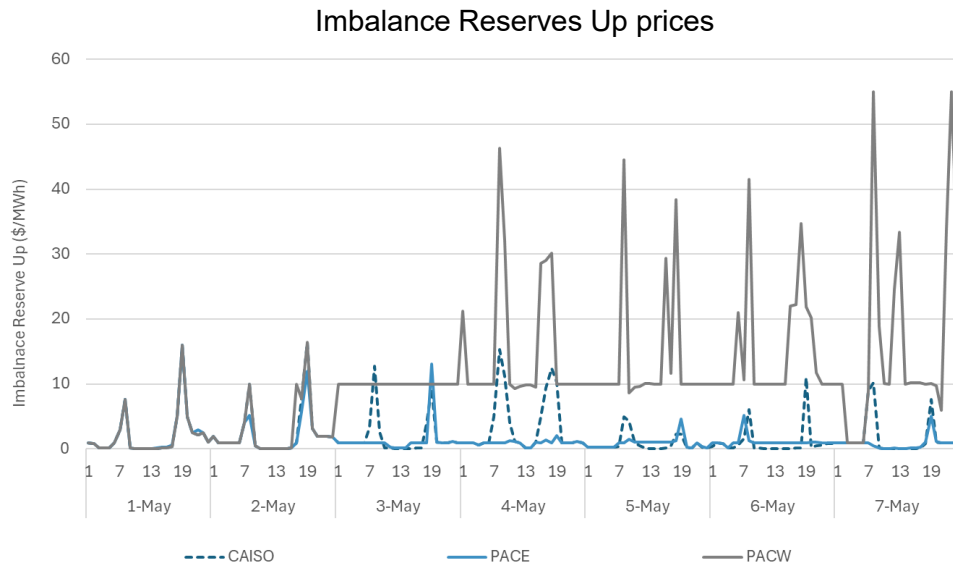
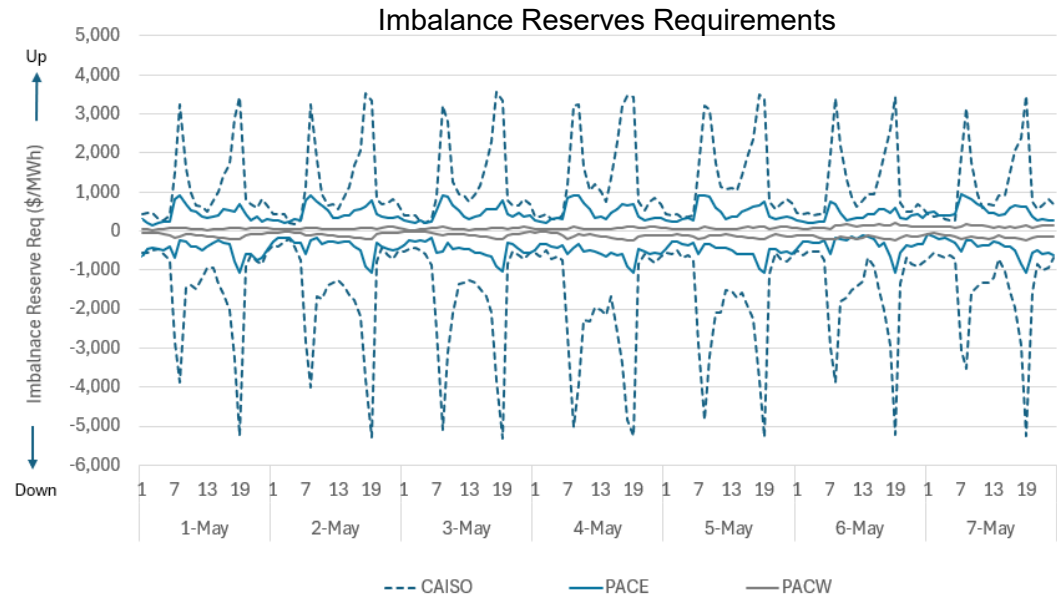
Energy prices are within typical economic range for the season of the year



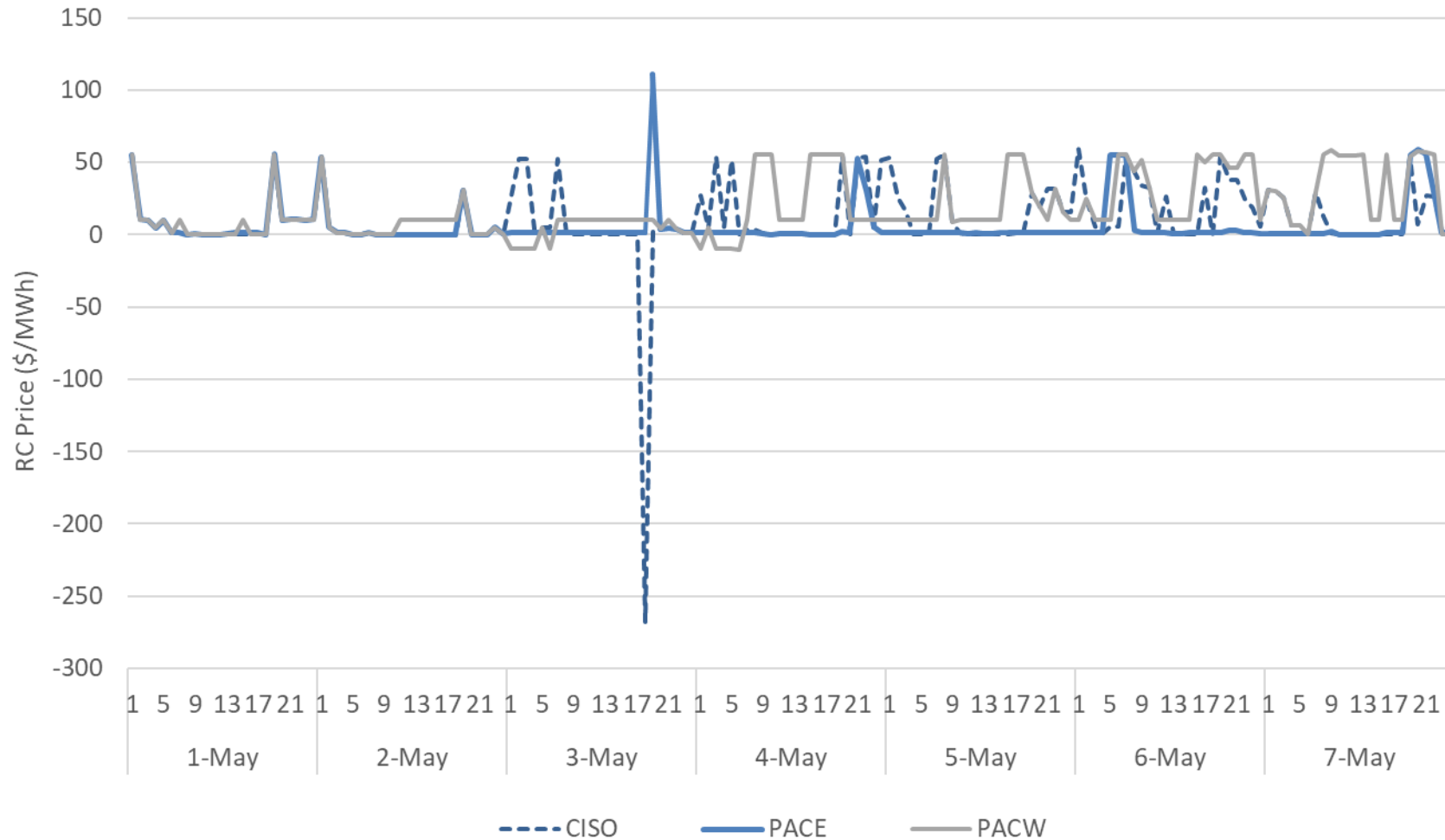
- Lower prices in midday hours and higher prices in morning and evening peaks
- Energy prices reflect the economics of the areas in wider market footprint
- Imbalance reserve prices exhibit a morning and evening peak

Imbalance reserve requirements are within expected ranges

Imbalance reserve prices are separated among areas

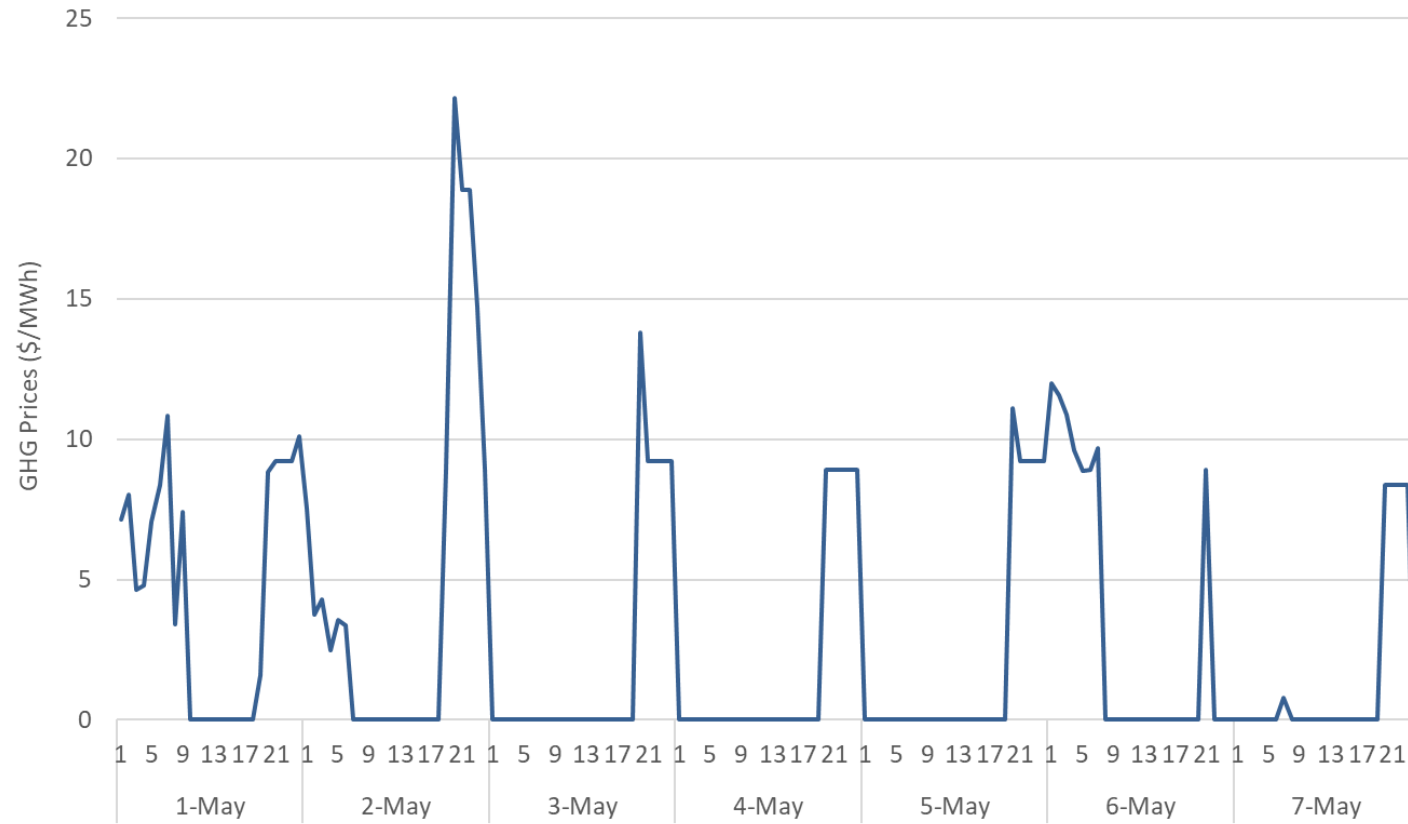


Area-level reliability capacity prices trending up to \$55



Location-specific prices can vary from the area-level due to congestion pricing

GHG prices have been under \$10 for most of the time



Questions?

References

- Green House Gas:
 - <https://stakeholdercenter.caiso.com/InitiativeDocuments/Presentation-Greenhouse-Gas-Coordination-Working-Group-Price-Formation-Sep-19-2024.pdf>
 - July 29, 2024 GHG WG [Presentation](#) (slides 18-27)
- Known Issues document posted on Release Planning page under Spring 2026 section:
<https://www.caiso.com/systems-applications/release-planning>
- The ISO continues to perform price validation and correction within standard 10 business days for day-ahead during the transitional period
- Daily report for EDAM is available at caiso.com
[Library | Daily Extended Day-Ahead Market \(EDAM\) reports | California ISO](#)
- Market Update call 5/14
- The ISO will provide monthly performance reports for EDAM followed by a public meeting
 - May results will be reported in the second half of June