

Scheduling Infrastructure & Business Rules (SIBR) Overview for DAME & EDAM – Part 1

February 2026

Today's Trainer:

Heidi Carder, Lead Customer Education Trainer

Rev. 2/5/26

What you will learn

By completing this training, you will gain essential skills and knowledge to prepare for EDAM participation. You will be able to:

- Describe the basic use and process flows of the SIBR User Interface.
- Explain the process for gaining access to SIBR.
- Locate useful SIBR reference resources.



This is step 1 in a 3-part SIBR training series

1

Introduction to SIBR –
Basic Concepts
Part 1
Part 2

2

SIBR Fundamentals –
General Bidding

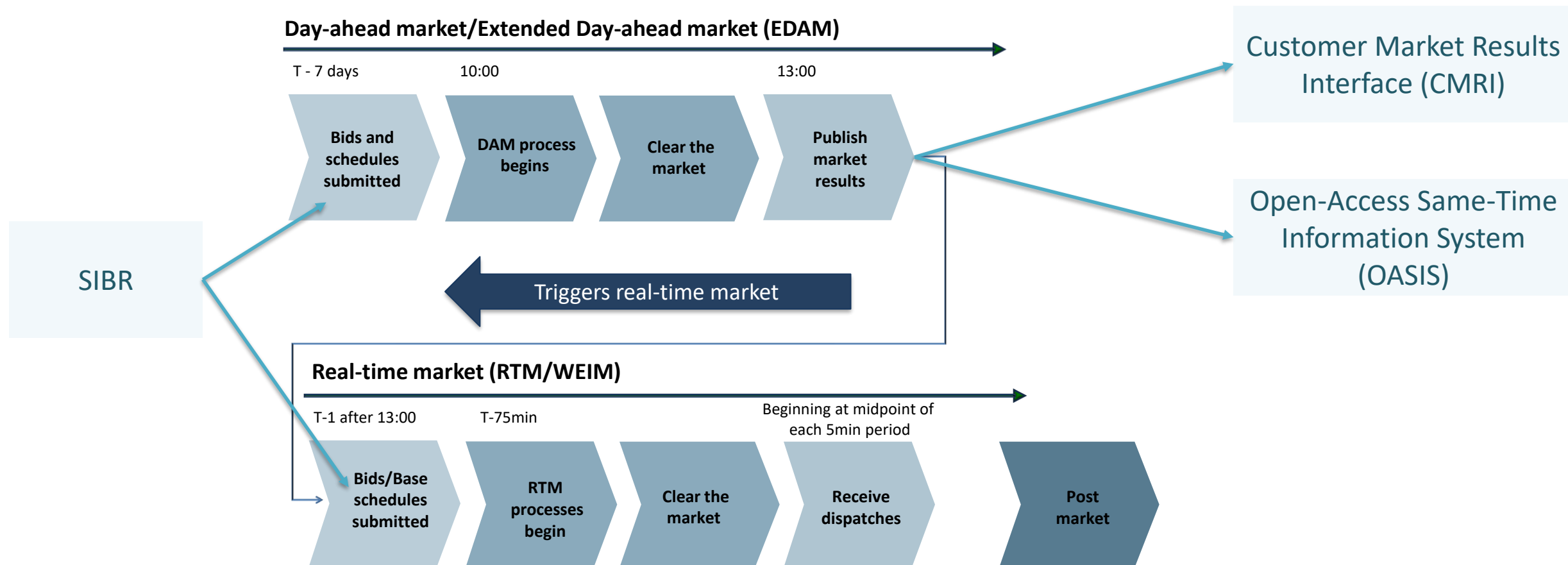
3

Advance SIBR Bidding
Concepts for EDAM –
Transfer System
Resources

SIBR OVERVIEW



Market Timeline



Scheduling Infrastructure and Business Rules (SIBR)

User interface (UI) provided by the California ISO that:

- Accepts bids and trades for energy and energy-related commodities from Scheduling Coordinators that are certified to interact with CAISO
- Ensures that those bids and trades are valid and modifies bids for correctness when necessary
- Enters those bids and trades into a database for processing by other components of CAISO's management systems
- Provides required feedback in the form of messages displayed to SCs concerning bids and trades that have been submitted

[illegible]

Scheduling Infrastructure and Business Rules (SIBR)

[illegible]

Section 2 of the SIBR User Guide provides a thorough explanation of each tab, common features and how to navigate

ACCESS



Application Access

- Certificate provisioning is required to access SIBR and all other ISO applications.
- Access the Market Participant Portal (MPP) to locate the link to SIBR.
- If you do not have access to the MPP or any other ISO applications or portals, contact your organization's User Access Administrator (UAA) for assistance.



Applications

- AIM Access and Identity Management
- ADS Automated Dispatch System
- HC Help Center
- CIDI Customer Inquiry Dispute and Information
- CIRA Customer Interface for Resource Adequacy
- CMRI Customer Market Results Interface
- CRR Congestion Revenue Rights
- DRRS Demand Response Registration System
- MF Master File
- MRI-S Market Results Interface - Settlements
- OASIS Open Access Same-Time Information System
- OMS Outage Management System
- RIMS Resource Interconnection Management System
- SIBR Scheduling Infrastructure & Business Rules
- SIBR Reports Scheduling Infrastructure & Business Rules Reports
- TR Transmission Registry

Welcome to the California ISO Market Participant Portal,
the centralized access point for secure applications and business critical information..

Market Operations

Market Status Market Event Log System Operating Messages

Day Ahead Market
Select Trade Date: 01/17/2026

Hour Ahead and Real Time Market
Select Trade Date: 01/16/2026 View All 24 Hours

Bids & Schedules	Inter SC Trades	Hour Ending	Bids & Schedules	Inter SC Trades
PUBLISHED	PUBLISHED	15	PUBLISHED	PUBLISHED
		16	CLOSE	CLOSE
		17	OPEN	PRE_CLOSE

Calendar and notices

View calendar View daily briefing

Information Security

✓	Name	Modified	Modified By
	ISO B2B Security Specification	March 19, 2019	smunusamy

To learn more about how to access ISO applications view the [How to Gain Access to the ISO Applications](#) computer-based training course

REFERENCE MATERIALS




SIBR documentation is posted to caiso.com

- Existing business rules are posted, along with upcoming changes based on EDAM implementation.
- Release notes capture changes made to business rules.
- Additional technical information is posted to the ISO's Developer Portal (account required).

[Systems and applications](#) / [Portals and applications](#) / [Scheduling Infrastructure Business Rules \(SIBR\) - Bidding](#)

Scheduling Infrastructure Business Rules (SIBR) - Bidding

The Scheduling Infrastructure Business Rules (SIBR) – Bidding application provides market participants with the ability to submit bids for energy and energy-related commodities and services.




[Access the application through the MPP*](#) 

*Certificate required

Technical documentation, including technical specifications and artifacts (WSDL, XSD), are available on the Developer Portal (developer account required).

[View all previous release notes and business rules for SIBR.](#)

Production

- [SIBR Scheduling Coordinator User Guide](#)  08/23/2023, 9:44 AM
- [SIBR Business Rules for Bidding v1 1.7.4](#)  08/02/2023, 11:51 AM
- [SIBR Reports Self Schedule Contracts Report](#)  07/16/2009, 12:59 PM

Upcoming

- [SIBR Business Rules for DAME and EDAM](#)  05/28/2025, 10:28 AM
- [SIBR Release Notes for Extended Day-Ahead Market and Enhancements \(EDAM/DAME\)](#)  05/28/2025, 10:28 AM
- [SIBR Release Notes Rules for Price Formation Enhancement \(PFE\)](#)  06/28/2024, 10:22 AM
- [SIBR Business Rules for Bidding v 1 1.8.3](#)  06/28/2024, 10:22 AM
Scheduling Infrastructure Business Rules for Price Formation Enhancement
- [SIBR Scheduling Coordinator User Guide for DAME](#)  03/05/2024, 11:06 AM
- [SIBR Business Rules for Bidding v1 1.8](#)  12/01/2023, 10:09 AM

Developer Portal



Developer resources

Welcome to the ISO's site for developers to interface with our technical systems and services. This site provides detailed descriptions of current and emerging Application Programming Interfaces (APIs), acceptable use, connectivity, sample code, and frequently asked questions.

[Sign up](#)[Log in](#)

<https://developer.caiso.com/>

Documentation Types:

- Technical Specs
- Services
- Resources:
 - User Guides
 - Release Notes
 - FAQs & Forums

Enhance your programs using our APIs

This is the main source for technical programming information for California ISO. Find services, sites, and documentation for each ISO app.

Don't know where to start?

[View our Getting Started Guide](#)

Have questions?

[View our Developer Forum](#)

News

CAISO will be retiring
<https://wsstas.caiso.com:4445 6/23>

CAISO Python B2B SOAP Utility
Available for Download

Accessing applications and services



Sites

ISO URLs and end point information



Release planning

Technical specifications and project information



Frequently asked questions

Answers to common questions



Rate Limit and Acceptable Use Policy

Regulates web service consumption by users



Access and Identity Management (AIM)

Request, obtain, update and maintain user access to ISO applications



B2B Security Specification

Provides definition of the syntax and semantics of security tokens that California ISO exchanges with external entities



API Terms of Use

License and restriction information for use of California ISO APIs



Supported browsers

List of applications and sites with supported browsers



Truststore Root Certificate Integration

Truststore Root Certificate Integration FAQ

Apps

ADS Automated Dispatch System	ALFS Advanced Load Forecasting System	BAAOP Balancing Area Authority Operator Portal	BSAP Base Schedule Aggregation Portal
CIRA Customer Interface for Resource Adequacy	CMRI Customer Market Results Interface	CRR Congestion Revenue Rights	DRRS Demand Response Registration System
ETCC Existing Transmission Contracts Calculator	FDR Forecast Data Repository	HANA Hosted Advanced Network Applications	MFRD MasterFile
MNS Market Notification Service	MRI-S Market Results Interface - Settlements	OASIS Open Access Same-time Information System	OMS Outage Management System
RCBSAP Reliability Coordinator Base Schedule Aggregation Portal Interface	RCEIDE RC Electric Industry Data Exchange	RTSI Real Time Scheduling Interface	SIBR Scheduling Infrastructure Business Rules
webLineR Transmission Line Ratings Management System			

Developer Portal – SIBR Page

California ISO

Developer

Carder, Heidi

Apps

Releases

Resources

Support

Contact

SIBR Scheduling Infrastructure Business Rules

HOME / APPS / SIBR

Overview


The SIBR application:


- Accepts bids and trades for energy and energy-related commodities from SCs that are certified to interact with ISO
- Ensures that those bids and trades are valid and modifies bids for correctness when necessary;
- Enters those bids and trades into a database for processing by other components of the ISO's management systems;
- Provides required feedback to SCs concerning bids and trades that have been submitted.

Resources

- SIBR Bidding
- SIBR Inter-SC Trades
- SIBR UI screenshot
- HTTP Error Codes
- Connectivity Test
- SIBR FAQ
- .NET Sample

Web Services Environments

**MAP Stage**
<https://mapstage-ws.caiso.com/sst/sibr>
IP addresses to whitelist:
45.42.16.0/21
Ports 80 & 443

**Production**
<https://ws.prod.caiso.com/sst/sibr>
IP addresses to whitelist:
45.42.16.0/21 network on ports 80 & 443

View UI Environments

Tech Specs

About status

NAME	STATUS	RELEASE	LAST UPDATED
SIBR Interface Spec for Inter SC Trade Services_v2.2 REDLINE.pdf	LEGACY	NA	3/21/2024

California ISO

Systems and applications Library Meetings and events Daily Briefing

About Stakeholder center Generation and transmission Market and operations Legal and regulatory Search...

Library

Scheduling Infrastructure Business Rules (SIBR) - Bidding

Technical documentation, including technical specifications and artifacts (WSDL, XSD), are available on the ISO Developer site at <https://developer.caiso.com>.

Topics / Systems and applications / Applications and sites / Scheduling Infrastructure Business Rules (SIBR) - Bidding

2 topics

Previous release notes and business rules
21 documents

Business user documentation
6 documents

California ISO

Systems and applications Library Meetings and events Daily Briefing

About Stakeholder center Generation and transmission Market and operations Legal and regulatory Search...

Library

Business user documentation

Topics / Systems and applications / Applications and sites / Scheduling Infrastructure Business Rules (SIBR) - Bidding / Business user documentation

2 topics

Production
1 documents

Upcoming future
5 documents


Developer Portal – SIBR Page

 Library






Upcoming future


[Topics](#) / [Systems and applications](#) / [Applications and sites](#) / [Scheduling Infrastructure Business Rules \(SIBR\) - Bidding](#) / [Business user documentation](#) / Upcoming future

5 documents

Filter table contents by title... 

5 of 5 results

TITLE	TYPE	POSTED
SIBR Business Rules for DAME and EDAM Update v 12.3.4  6.32 MB		01/12/2026, 5:16 PM
SIBR Release Notes for Extended Day-Ahead Market and Enhancements (EDAM/DAME)  2.44 MB	Release Notes	01/12/2026, 5:16 PM
Updated with 12.3.1 changes		
SIBR Release Notes Rules for Price Formation Enhancement (PFE)  757.95 KB		06/28/2024, 10:22 AM
SIBR Scheduling Coordinator User Guide for DAME  8.45 MB	Guide	03/05/2024, 11:06 AM
SIBR Release Notes Rules for Post Fall 2023 v1 1.8 (PWT Base)  833.78 KB	Release Notes	12/01/2023, 10:09 AM

 California ISO

California ISO
SIBR - Scheduling Coordinator Users Guide
January 26, 2024

Revision History

Date	Version	By	Description
1/26/2024	8.0	WT	Added Mock screen for DAME IR/IRD/RCU/RCD products (pg 61-62)
8/21/2023	7.3	WT	Update for new Hourly component for Off Grid Charge. (pg 55-56)
2/23/2023	7.2	WT	Update for browser support Edge Chrome
12/20/2022	7.1	WT	Update UI Transaction Wheel Counter Resource reference.
6/8/2022	7.0	WT	New UI tabs added for Messages (FERC 831), Ancillary Service Resource

Version: 8.0
Release Date: 1/26/2024

Scheduling Infrastructure Business Rules (SIBR)

A	B	C	D	E	F	G	H	
SIBR Business Rules for Spring 2026 DAME, EDAM Version 12.3.4 1/9/2026 CAISO Public								
Market	Business Rule ID	Business Rule Numbering					Description	Comments
		1					General	Constants, configurable parameters and general system
ALL	10001	1	0	0	0	1	The configurable Time Precision must be initialized to one minute.	
ALL	10002	1	0	0	0	2	The configurable Quantity Precision must be initialized to 0.01 MW, MWh, or MW/min.	
ALL	10003	1	0	0	0	3	The configurable Price Precision must be initialized to one cent of a US Dollar.	
ALL	10020	1	0	0	0	4	The configurable Distribution Factor Precision must be initialized to 0.0001.	
ALL	10029	1	0	0	0	5	The configurable Balancing Tolerance must be initialized to 0.1 MW.	
ALL	10004	1	0	0	0	6	All Submitted Bids and Submitted Trades must adhere to the following numerical precision rules: a) all time quantities must have a precision no finer than the configurable Time Precision, b) all Energy, Capacity, and Ramp Rate quantities must have a precision no finer than the configurable Quantity Precision, and c) all prices must have a precision no finer than the configurable Price Precision.	
ALL	10005	1	0	0	0	7	The configurable Maximum Start-Up Time/Cost Curve Segment Number for Submitted Bids must be initialized to 3.	
ALL	10006	1	0	0	0	8	The configurable Maximum Energy Curve Segment Number for Submitted Bids must be initialized to 10.	
ALL	10007	1	0	0	0	9	The configurable Maximum Ramp Rate Curve Segment Number for Submitted Bids must be initialized to 4.	
ALL	10048	1	0	0	0	10	The configurable NGR Maximum Ramp Rate Curve Segment Number for Submitted Bids must be initialized to 2.	
ALL	10021	1	0	0	0	11	The configurable Energy Bid Floor must be initialized to -\$150/MWh.	
ALL	10022	1	0	0	0	12	The configurable Energy Bid Ceiling must be initialized to \$2000/MWh.	
ALL	10074	1	0	0	0	13	The configurable Energy Bid Soft Cap must be initialized to \$1000/MWh.	
DAM	10076	1	0	0	0	14	The configurable Day-Ahead Inter-Tie Virtual and Non Participating Load Energy Bid Ceiling must be initialized to the Energy Bid Soft Cap for each Trading Hour.	
RTM	10077	1	0	0	0	15	The configurable Real-Time Inter-Tie Energy Bid Ceiling must be initialized to the Energy Bid Ceiling for each Trading Hour in which the Energy Bid Ceiling High Limit Flag is set to Yes, otherwise it must be initialized to the Energy Bid Soft Cap, and all Scheduling Coordinators must be notified of Trading Hours in which the Energy Bid Ceiling was initialized to the Energy Bid Ceiling.	
Business Rules		Figures		Terms				

Business Rules

Bidding rules for bid submission

Figures

Business Rules

Terms

Definitions of the business rules

SIBR Business Rules for DAME and EDAM Update v12.3.4

BID CREATION & SUBMISSION PROCESSES



Products and services

Financial and physical resource capabilities determine how customers can participate in the Extended Day-Ahead Market.

Energy

- Physical supply and demand
- Virtual supply and demand (optional feature of EDAM)

Transmission

- Transfer Capacity Limit
 - For Transfer System Resources

Capacity

- Ancillary Services (self-provided)
 - Regulation up & down
 - Spin & non-spin operating reserves
- Imbalance Reserves
- Reliability Capacity
- Flexible ramping product (Real-Time Market)

Awarded from
Energy bids

Scheduling Infrastructure and Business Rules (SIBR)

California ISO
SIEMENS MAPSTAGE SIBR 177:1 3.8.44-20240829120

Bids | Trades | Convergence Bids | Energy Forecast | Export Priority Report | Ind Viewer | OTC Viewer | Messages | Dynamic Limit | Ancillary Service Requirement | Admin

Market: Day Ahead Date: 01/28/2026 Coordinator: CISO Apply Reset

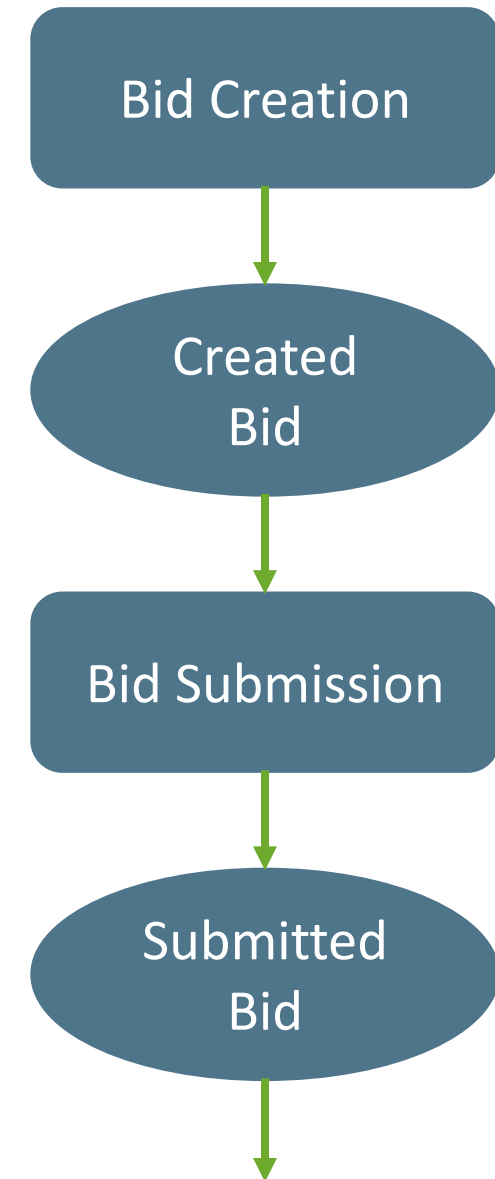
Bid summary

1 - 24 of 33

Status	Resource type	Resource ID	State	Daily	Hourly	Energy	Energy Adj	STD	ETP	TOR	TOP	RMT	BAS	LOF	LPT	LSG	OATT1	OATT2	Gen	Load	RU	RD	SR	NR	LFD	LFU	IRU	IRD	RCU	RCD	Down Up	TCL	Submitted	Market status
[check]	Transient TSR	CISO-CISO_PACW_MALIN500_I_1-PAC1-EDAM02				N/A	N/A	[check]			N/A	N/A	N/A	N/A	N/A	N/A	N/A	N/A	N/A	N/A	N/A	N/A			N/A	N/A	N/A	N/A	N/A	N/A	N/A	N/A	01/27/2026 03:10	Open
[check]	Transient TSR	CISO-CISO_PACW_MALIN500_I_1-BPAC-EDAM06				N/A	N/A	[check]			N/A	N/A	N/A	N/A	N/A	N/A	N/A	N/A	N/A	N/A	N/A	N/A			N/A	N/A	N/A	N/A	N/A	N/A	N/A	N/A	01/27/2026 03:10	Open
[check]	Inter-Tie	CISO_CISO_PACW_TRCYCOTP_E_1_RT			[check]		N/A				N/A	N/A	N/A	N/A	N/A	N/A	N/A	N/A	N/A	N/A	N/A			N/A	N/A	N/A	N/A	N/A	N/A	N/A	N/A	N/A	01/24/2026 05:24	Open
[check]	Inter-Tie	CISO_CISO_PACW_MALIN500_I_1_RT			[check]		N/A				N/A	N/A	N/A	N/A	N/A	N/A	N/A	N/A	N/A	N/A	N/A			N/A	N/A	N/A	N/A	N/A	N/A	N/A	N/A	N/A	01/24/2026 05:24	Open
[check]	Inter-Tie	CISO_CISO_PACW_MALIN500_E_1_RT			[check]		N/A				N/A	N/A	N/A	N/A	N/A	N/A	N/A	N/A	N/A	N/A	N/A			N/A	N/A	N/A	N/A	N/A	N/A	N/A	N/A	N/A	01/24/2026 05:24	Open
[check]	Inter-Tie	CISO_CISO_PACW_TRCYCOTP_I_1_RT			[check]		N/A				N/A	N/A	N/A	N/A	N/A	N/A	N/A	N/A	N/A	N/A	N/A			N/A	N/A	N/A	N/A	N/A	N/A	N/A	N/A	N/A	01/24/2026 05:24	Open
[check]	Inter-Tie	CISO_CISO_PGE_MALIN500_I_4_EE					N/A				N/A	N/A	N/A	N/A	N/A	N/A	N/A	N/A	N/A	N/A	N/A					N/A	N/A					01/27/2026 03:13	Open	
[check]	Inter-Tie	CISO_CISO_PGE_MALIN500_E_1_RT					N/A				N/A	N/A	N/A	N/A	N/A	N/A	N/A	N/A	N/A	N/A	N/A					N/A	N/A					01/27/2026 03:24	Open	
[check]	Inter-Tie	CISO_CISO_PGE_MALIN500_I_1_RT					N/A				N/A	N/A	N/A	N/A	N/A	N/A	N/A	N/A	N/A	N/A	N/A					N/A	N/A					01/27/2026 03:24	Open	
[check]	Transient TSR	CISO-CISO_PACW_MALIN500_I_2-PAC1-1				N/A	N/A				N/A	N/A	N/A	N/A	N/A	N/A	N/A	N/A	N/A	N/A	N/A					N/A	N/A					01/27/2026 09:05	Open	
[check]	Transient TSR	CISO-CISO_PACW_MALIN500_I_2-PAC1-2				N/A	N/A				N/A	N/A	N/A	N/A	N/A	N/A	N/A	N/A	N/A	N/A	N/A					N/A	N/A					01/27/2026 09:05	Open	
[check]	Transient TSR	CISO-CISO_PACW_MALIN500_I_2-PAC1-3				N/A	N/A				N/A	N/A	N/A	N/A	N/A	N/A	N/A	N/A	N/A	N/A	N/A					N/A	N/A					01/27/2026 09:05	Open	
[check]	Transient TSR	CISO-CISO_PACW_MALIN500_I_2-PAC1-4				N/A	N/A				N/A	N/A	N/A	N/A	N/A	N/A	N/A	N/A	N/A	N/A	N/A					N/A	N/A					01/27/2026 09:05	Open	
[check]	Transient TSR	CISO-CISO_PACW_MALIN500_I_2-PAC1-5				N/A																												

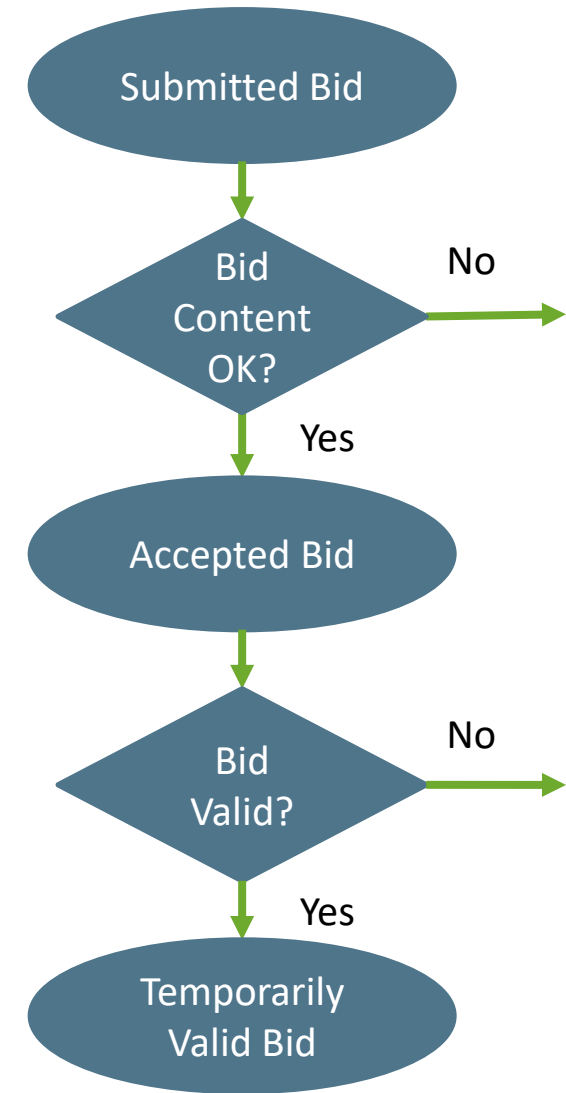
Process Flows – Day-Ahead Bid Creation & Submission

- Bid created in SIBR
- Results in “Created Bid” that is saved in the system’s database
- When bid creation is complete submit the bid
- Results in “submitted bid” that can be used by the system



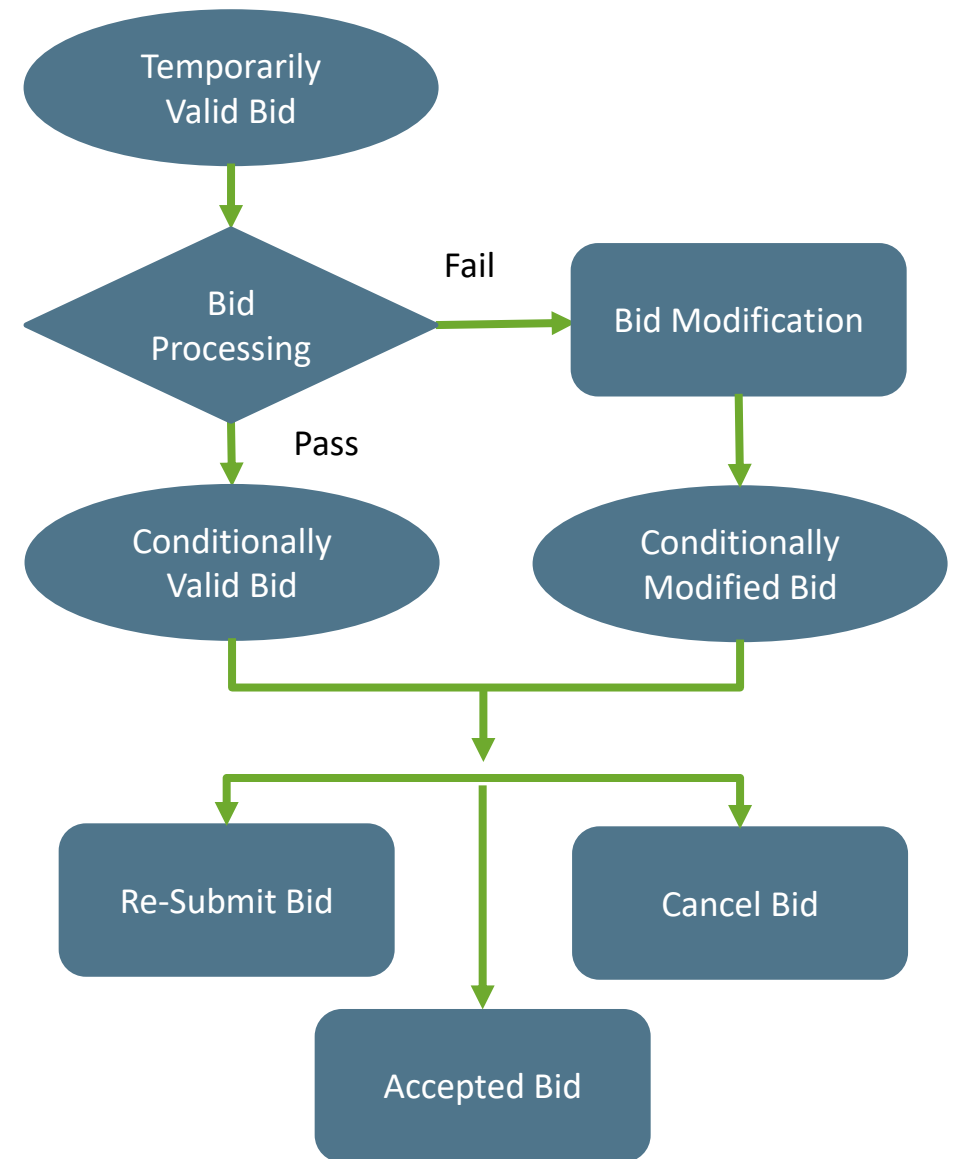
Process Flows – Day-Ahead Bid Validation

- Rules Engine performs a “bid content” validation on submitted bid
- Bids that are structurally complete and correct produces “Accepted Bid”
- Further processing by Rules Engine to ensure it complies with applicable market rules
- Results in “Temporarily Valid” bid



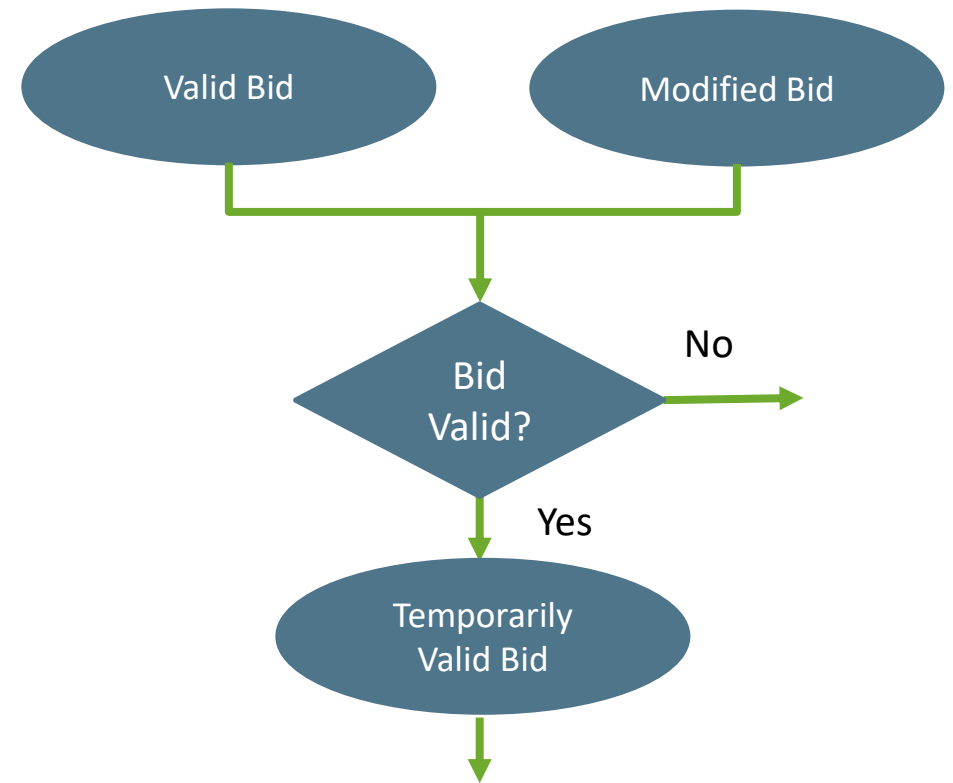
Process Flows – Day-Ahead Bid Processing

- Starts with a bid that has passed previous validation steps
- Bid may be modified by the system
- Produces a “Conditionally Valid” or “Conditionally Modified” bid
- Bidder may choose to accept, cancel or resubmit bid



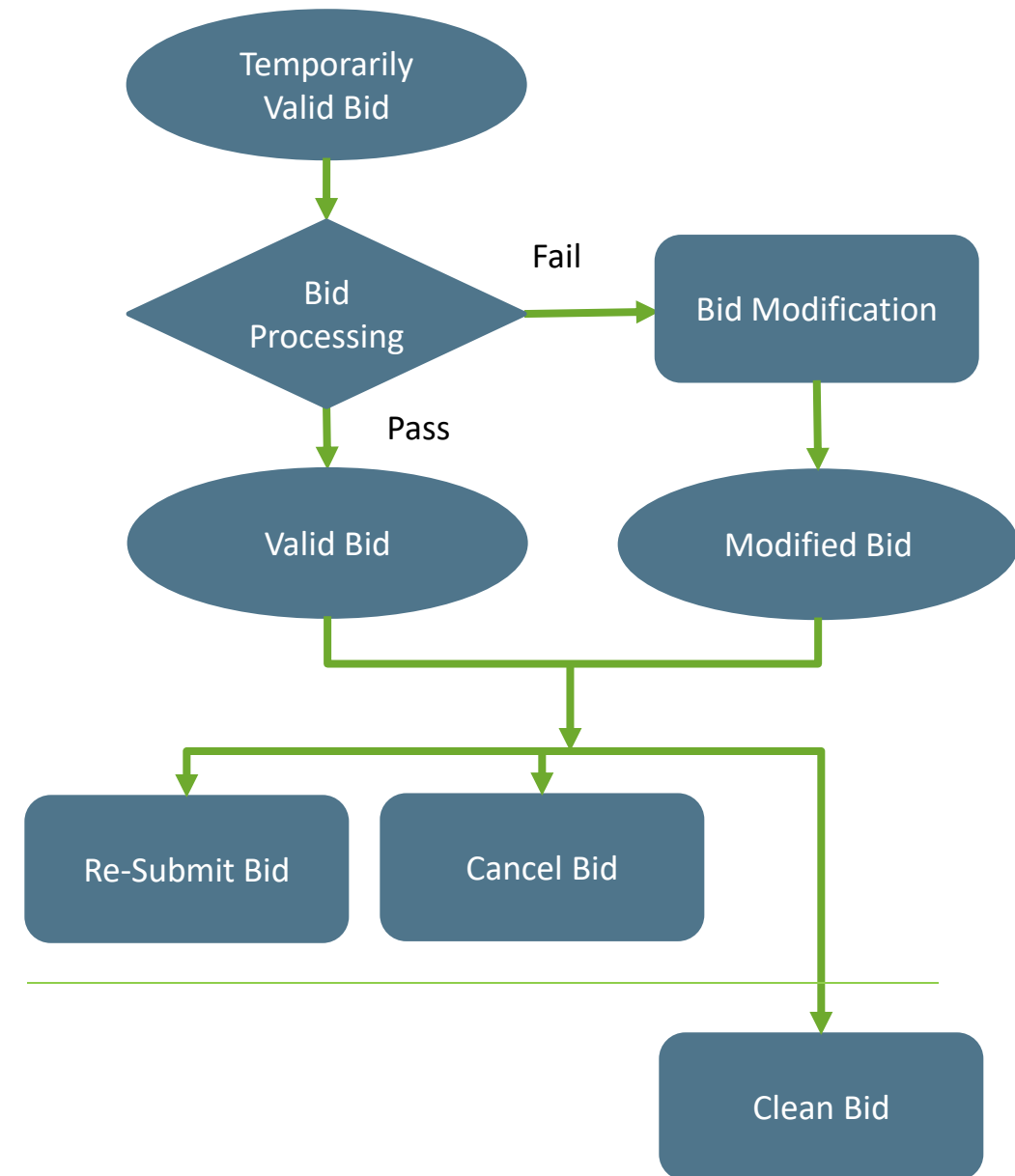
Process Flows – Bid Validation After Master File Update

- “Conditional” since bid was adjudged valid prior to Master File update
- Must be revalidated
- Produces a “Temporarily Valid” bid



Process Flows – Day-Ahead Processing After Master File Update

- Starts with a bid that has passed previous validation steps
- Bid may be modified by the system
- Produces a “Valid” or “Modified” bid



Status Icons provide a visual indicator of your bid status



California ISO

SIEMENS MAPSTAGE SIBR 177:1 3.8.44-20240829120

BidsTradesConvergence BidsEnergy ForecastExport Priority ReportInd ViewerOTC ViewerMessagesDynamic LimitAncillary Service RequirementAdmin

Market: Day AheadDate: 01/28/2026Coordinator: CISOApplyReset

Bid summary

Status	Resource type	Resource ID	State	Daily	Hourly	Energy	Energy Adj	STD	ETC	ETP	TOR	TOP	RMT	BAS	LOF	LPT	LSG	OATT1	OATT2	Gen	Load	RU	RD	SR	NR	LFD	LFU	IRU	IRD	RCU	RCD	Down	Up	TCL	Submitted	Market status	
[ALL]	[ALL]	[ALL]	[I]	[A]	[AI]	[AI]	[ALL]	[AI]	[AI]	[A]	[A]	[A]	[A]	[A]	[A]	[A]	[A]	[AI]	[AI]	[A]	[A]	[A]	[A]	[A]	[A]	[A]	[A]	[ALL]	[ALL]	[ALL]	[ALL]	[A]	[A]	[A]		[ALL]	
✓	Transient TSR	CISO-CISO_PACIW_MALIN500_I-1-PAC1-EDAM02				N/A	N/A	✓		N/A											N/A	N/A						N/A	N/A	N/A	N/A	N/A	N/A		01/27/2026 03:10	Open	
✓	Transient TSR	CISO-CISO_PACIW_MALIN500_I-1-BPAC-EDAM06				N/A	N/A	✓		N/A											N/A	N/A						N/A	N/A	N/A	N/A	N/A	N/A		01/27/2026 03:10	Open	
✓	Inter-Tie	CISO_CISO_PACIW_TRCYCOTP_E_1_RT			✓					N/A											N/A	N/A						N/A	N/A	N/A	N/A	N/A	N/A		01/24/2026 05:24	Open	
✓	Inter-Tie	CISO_CISO_PACIW_MALIN500_I_1_RT			✓					N/A											N/A	N/A						N/A	N/A	N/A	N/A	N/A	N/A		01/24/2026 05:24	Open	
✓	Inter-Tie	CISO_CISO_PACIW_MALIN500_E_1_RT			✓					N/A											N/A	N/A						N/A	N/A	N/A	N/A	N/A	N/A		01/24/2026 05:24	Open	
✓	Inter-Tie	CISO_CISO_PACIW_TRCYCOTP_I_1_RT			✓					N/A											N/A	N/A						N/A	N/A	N/A	N/A	N/A	N/A		01/24/2026 05:24	Open	
✓	Inter-Tie	CISO_CISO_PGE_MALIN500_I_4_EE								N/A											N/A	N/A						N/A	N/A	N/A	N/A	N/A	✓		01/27/2026 03:13	Open	
✓	Inter-Tie	CISO_CISO_PGE_MALIN500_E_1_RT								N/A											N/A	N/A						N/A	N/A	N/A	N/A	N/A			01/27/2026 03:24	Open	
✓	Inter-Tie	CISO_CISO_PGE_MALIN500_I_1_RT								N/A											N/A	N/A						N/A	N/A	N/A	N/A	N/A			01/27/2026 03:24	Open	
✓	Transient TSR	CISO-CISO_PACIW_MALIN500_I-2-PAC1-1				N/A	N/A			N/A											N/A	N/A						N/A	N/A	N/A	N/A	N/A	N/A	✓		01/27/2026 09:05	Open
✓	Transient TSR	CISO-CISO_PACIW_MALIN500_I-2-PAC1-2				N/A	N/A			N/A											N/A	N/A						N/A	N/A	N/A	N/A	N/A	N/A	✓		01/27/2026 09:05	Open
✓	Transient TSR	CISO-CISO_PACIW_MALIN500_I-2-PAC1-3				N/A	N/A			N/A											N/A	N/A						N/A	N/A	N/A	N/A	N/A	N/A	✓		01/27/2026 09:05	Open
✓	Transient TSR	CISO-CISO_PACIW_MALIN500_I-2-PAC1-4				N/A	N/A			N/A											N/A	N/A						N/A	N/A	N/A	N/A	N/A	N/A	✓		01/27/2026 09:05	Open
✓	Transient TSR	CISO-CISO_PACIW_MALIN500_I-2-PAC1-5				N/A	N/A			N/A											N/A	N/A						N/A	N/A	N/A	N/A	N/A	N/A	✓		01/27/2026 09:05	Open
✓	Transient TSR	CISO-CISO_PACIW_MALIN500_I-2-PAC1-6				N/A	N/A			N/A											N/A	N/A						N/A	N/A	N/A	N/A	N/A	N/A	✓		01/27/2026 09:05	Open
✓	Transient TSR	CISO-CISO_PACIW_MALIN500_I-2-PAC1-7				N/A	N/A			N/A											N/A	N/A						N/A	N/A	N/A	N/A	N/A	N/A	✓		01/27/2026 09:05	Open
✓	Transient TSR	CISO-CISO_PACIW_MALIN500_I-2-PAC1-8				N/A	N/A			N/A											N/A	N/A						N/A	N/A	N/A	N/A	N/A	N/A	✓		01/27/2026 09:05	Open
✓	Transient TSR	CISO-CISO_PACIW_MALIN500_I-2-PAC1-9				N/A	N/A			N/A											N/A	N/A						N/A	N/A	N/A	N/A	N/A	N/A	✓		01/27/2026 09:05	Open
✓	Transient TSR	CISO-CISO_PACIW_MALIN500_I-2-PAC1-10				N/A	N/A			N/A											N/A	N/A						N/A	N/A	N/A	N/A	N/A	N/A	✓		01/27/2026 09:05	Open
✓	Transient TSR	CISO-CISO_PACIW_MALIN500_I-2-PAC1-11				N/A	N/A			N/A											N/A	N/A						N/A	N/A	N/A	N/A	N/A	N/A	✓		01/27/2026 09:05	Open
✓	Transient TSR	CISO-CISO_PACIW_MALIN500_I-2-PAC1-12				N/A	N/A			N/A											N/A	N/A						N/A	N/A	N/A	N/A	N/A	N/A	✓		01/27/2026 09:05	Open
✓	Transient TSR	CISO-CISO_PACIW_MALIN500_I-2-PAC1-13				N/A	N/A			N/A											N/A	N/A						N/A	N/A	N/A	N/A	N/A	N/A	✓		01/27/2026 09:05	Open
✓	Transient TSR	CISO-CISO_PACIW_MALIN500_I-2-PAC1-14				N/A	N/A			N/A											N/A	N/A						N/A	N/A	N/A	N/A	N/A	N/A	✓		01/27/2026 09:05	Open
✓	Transient TSR	CISO-CISO_PACIW_MALIN500_I-2-PAC1-15				N/A	N/A			N/A											N/A	N/A						N/A	N/A	N/A	N/A	N/A	N/A	✓		01/27/2026 09:05	Open

Energy detailsPrice curve(s)

Hour Price curve(s) Price Quantity Block bid hours

QuantityPrice [\$]

Section 2.2.2 of the SIBR User Guide provides more status icons and their definitions

Clicking on the bid provides the business rules that explain the status

Bids **Trades** **Convergence Bids** **Energy Forecast** **Export Priority Report** **Ind Viewer** **OTC Viewer** **Messages** **Dynamic Limit** **Ancillary Service Requirement** **Admin**

Market: Day Ahead Date: 01/31/2026 Coordinator: OPGE Apply Reset

Bid summary

Status	Resource type	Resource ID
	Transient TSR	OPGE-PACE_PACW_HMWYP_E-1-OPGE-26HC

Bid Messages for market plan: 26013100 and resource: OPGE-PACE_PACW_HMWYP_E-1-OPGE-26HC

Status: Invalid

Bid Messages

Product	Rule#	Level	Message
Self Schedule - ETC	33204	0	Bid did not pass validation rules, please check rule messages for details
Self Schedule - ETC	33206	0	Bid is Invalid - The ETC Contract is NOT registered

SIBR Business Rules for Spring 2026 DAME, EDAM
Version 12.3.4 19/02/2026 CASO Public

Mark	Busine Rule Lu	Business Ru Numbering	Description	Comments
ALL	10001	1	The configurable Time Precision must be initialized to one minute.	Constants, configurable parameters and general system
ALL	10002	2	The configurable Quantity Precision must be initialized to 0.01 MW, MWh, or MWh/min	
ALL	10003	3	The configurable Price Precision must be initialized to one cent of a US Dollar.	
ALL	10004	4	The configurable Distribution Factor Precision must be initialized to 0.0001.	
ALL	10005	5	The configurable Balancing Tolerance must be initialized to 0.1 MW.	
ALL	10006	6	All Submitted Bids and Submitted Traders must adhere to the following numerical precision rules: a) all time quantities must have a precision no finer than the configurable Time Precision, b) all Energy, Capacity, and Ramp Rate quantities must have a precision no finer than the configurable Quantity Precision, and c) all prices must have a precision no finer than the configurable Price Precision.	
ALL	10007	7	The configurable Maximum Start-Up Time/Cost Curve Segment Number for Submitted bids must be initialized to 3.	
ALL	10008	8	The configurable Maximum Energy Curve Segment Number for Submitted bids must be initialized to 10.	
ALL	10009	9	The configurable Maximum Ramp Rate Curve Segment Number for Submitted bids must be initialized to 4.	
ALL	10010	10	The configurable NGR Maximum Ramp Rate Curve Segment Number for Submitted bids must be initialized to 2.	
ALL	10011	11	The configurable Energy Bid Floor must be initialized to -\$150/MWh.	
ALL	10012	12	The configurable Energy Bid Ceiling must be initialized to \$2000/MWh.	
ALL	10013	13	The configurable Day-Ahead Inter-Tie Virtual and Non-Participating Load Energy Bid Ceiling must be initialized to the Energy Bid Soft Cap.	
DAME	10014	14	The configurable Real-Time Inter-Tie Energy Bid Ceiling must be initialized to the Energy Bid Ceiling for each Trading Hour in which the Energy Bid Ceiling High Limit Flag is set to Yes, otherwise it must be initialized to the Energy Bid Soft Cap, and all Scheduling Coordinators must be notified of Trading Hours in which the Day-Time Inter-Tie Energy Bid Ceiling was initialized to the Energy Bid Ceiling.	
RITM	10015	15	The configurable Real-Time Inter-Tie Energy Bid Ceiling must be initialized to the Energy Bid Ceiling for each Trading Hour in which the Energy Bid Ceiling High Limit Flag is set to Yes, otherwise it must be initialized to the Energy Bid Soft Cap, and all Scheduling Coordinators must be notified of Trading Hours in which the Day-Time Inter-Tie Energy Bid Ceiling was initialized to the Energy Bid Ceiling.	

Data from SIBR Business Rules for DAME and EDAM
Update v 12.3.4 spreadsheet populates these fields

REFERENCES



These resources provide more information about bidding and validation

Title	Link
Business Practice Manual (BPM) for Market Instruments	https://bpmcm.caiso.com/Pages/BPMDetails.aspx?BPM=Market%20Instruments
Business Practice Manual (BPM) for Market Operations section 2.5.2 Bids	https://bpmcm.caiso.com/Pages/BPMDetails.aspx?BPM=Market%20Operations
Knowledge Article: Reasons Day-Ahead Market Results May Not Seem Economic	https://caiso.my.site.com/custsvccomm/s/article/Reasons-Day-Ahead-Market-Results-May-Not-Seem-Economic
Resource Performance Expectations of Dispatch and Operating Instructions (CBT)	https://www.caiso.com/content/cbt/resource-performance-expectations-dispatch-operating-instructions/story.html
SIBR Business Rules for Bidding webpage	https://www.caiso.com/systems-applications/portals-applications/scheduling-infrastructure-business-rules-sibr-bidding
Tariff: Section 30 – Bid and Self-Schedule Submission for all CAISO Markets	https://www.caiso.com/legal-regulatory/tariff



Reference Material (cont.)

Title	Link
Market Participant Portal	https://portal.caiso.com/
Developer Portal	https://developer.caiso.com/
SIBR – Scheduling Coordinator Users Guide for DAME	https://www.caiso.com/documents/sibr_scuserguide_80.pdf
SIBR Business Rules for DAME and EDAM Update v12.3.4	https://www.caiso.com/documents/sibr-business-rules-for-dame-and-edam-update.xlsx

To find basic training information on bids and base schedules, and gaining access to applications view the following resources:

- Computer-based training courses:
 - [Economic Bids and Self Schedules](#)
 - [EDAM Bidding Basic Concepts](#)
 - [How to Gain Access to the ISO Applications](#)
- Instructor led training presentations and recordings:
 - [EDAM Bidding Intermediate – presentation](#)
 - [EDAM Scheduling Coordinator Training Day 2, September 11th, 2025 – recording](#)



Find helpful training resources on the ISO Training Center

California ISO

Systems and applications ▾ Library ▾ Meetings and events ▾ Daily Briefing

About ▾ **Stakeholder center ▾** Generation and transmission ▾ Market and operations ▾ Legal and regulatory ▾ Search...

[Stakeholder center](#) / [Training center](#)

Training center

The California ISO is committed to providing our customers with a broad menu of high-quality training courses on the ISO market functionality, as well as individual market applications. These self-paced courses are organized into training topics that are designed to be an industry resource for market participants and the general public to learn about electric grids and markets, and the ISO's role in the electricity system.

On this page

- [Upcoming meetings](#)
- [Topics](#)
- [Recent materials](#)

Upcoming meetings

ONLINE

Session 2 - New CAISO Website Overview Webinar Training

05/29/2024 10:00 AM - 11:00 AM

Training topics

Click on a training topic to view the available courses. Our courses are intended for market participants and the general public. Please note, course content is subject to change based on the implementation of new market functionality, rules, or processes.

- Releases, initiatives and readiness notes
- Markets and operations
- Settlements and metering
- Computer-based training library
- Scheduling coordinator
- Western Energy Imbalance Market**
- Congestion revenue rights
- Reference

Recent materials

Search by title

TITLE	TYPE	POSTED	
Presentation - Resource Operations Readiness Training Batteries May 13, 2024	Presentation	05/16/2024, 2:09 PM	Back to top
Presentation - Resource Operations - Readiness Training	Presentation	05/07/2024, 3:37 PM	On this page

Computer-Based Training Courses:

- EDAM Overview Video
- EDAM Processes & Timelines
- EDAM Pricing Model
- EDAM GHG Regulation Obligations
- EDAM Bidding: Basic Concepts
- EDAM Integration with WEIM

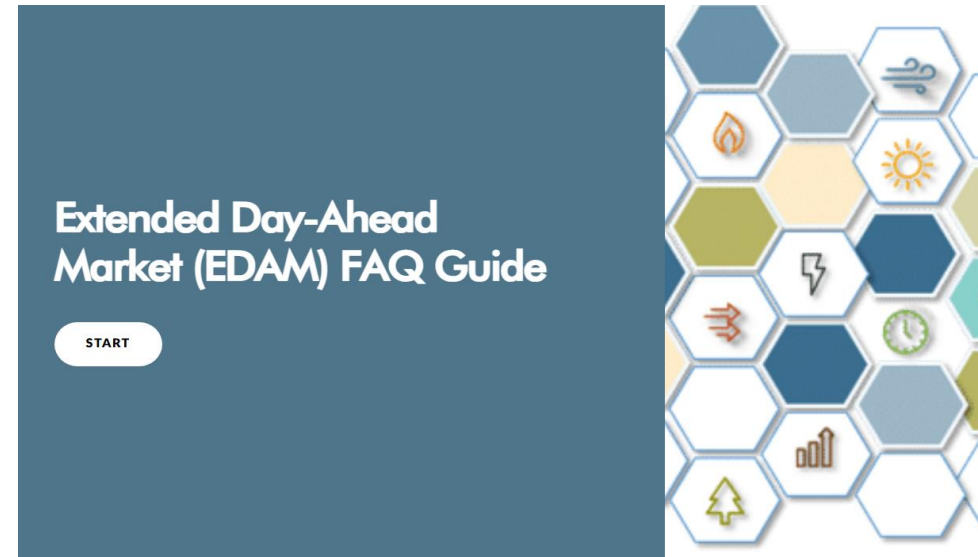
EDAM Frequently Asked Questions Guide

The [EDAM FAQ Guide](#) is a web-based resource designed to address general EDAM-related “how-to” questions.

Guide will continue to be updated based on Q&A from CIDI inquiries, training, etc.

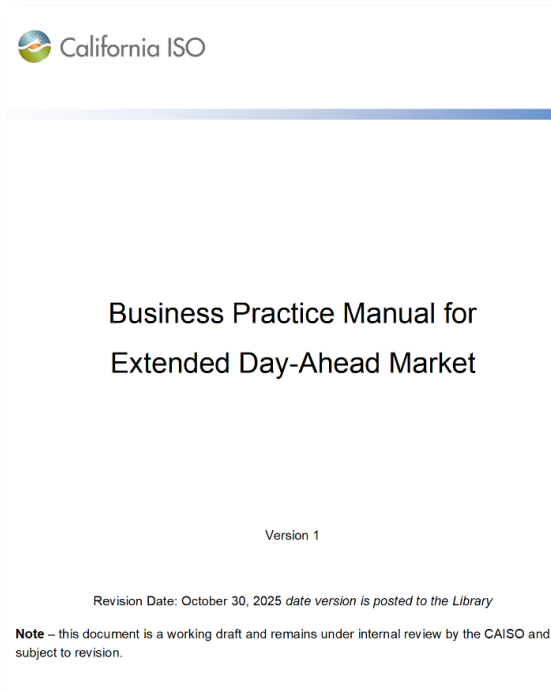
You can find this guide along with other helpful training resources on:

- [ISO Training Center](#)
- [EDAM Stakeholder page](#)
- [WEM Webpage](#)
- [WEIM Portal](#) (certificate required)
- [CIDI Knowledge Article](#)

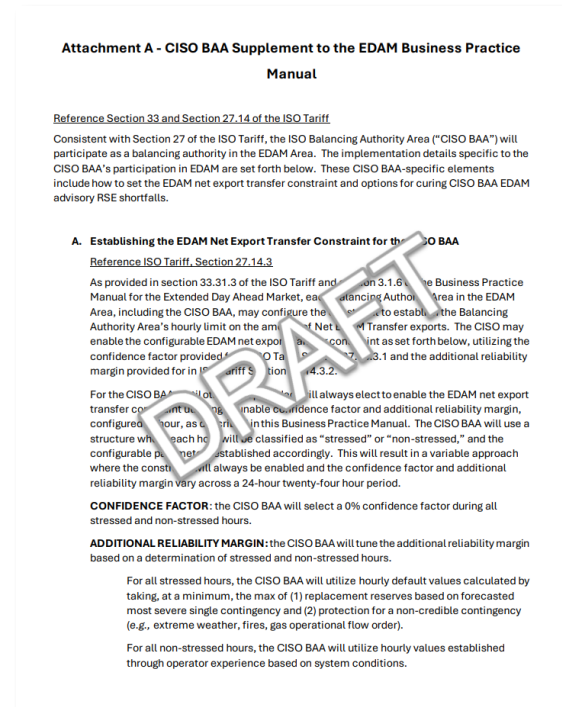


Questions about where to find the guide? Email: CustomerReadiness@caiso.com

Early drafts of the EDAM BPM documents and Business Requirement Specifications (BRS) with detailed changes are now available on the [Release Planning](#) page.



Extended day-ahead market (EDAM) header



EDAM ISO balancing authority area participation rules track a header

Day-ahead market enhancements (DAME)

- [Business Requirements Specification v1.6 Redline - Day-Ahead Market Enhancements](#) 09/04/2025, 9:59 AM
- [Business Requirements Specification v1.6 - Day-Ahead Market Enhancements](#) 09/04/2025, 9:59 AM
- [Business Practice Summary v1.1 - Day-Ahead Market Enhancements](#) 04/16/2025, 10:21 AM
- [Market Simulation Structured Scenarios - Day-Ahead Market Enhancements v1.3](#) 08/22/2025, 8:28 AM
- [Submit Business Requirements Specification v1.5 - Day-Ahead Market Enhancements](#) 09/18/2025, 11:23 AM
Due: Oct 06, 05:00 pm

DAME Business practice manuals (BPMs)

- [Business Practice Manual Market Instruments v91.2 DAME](#) 10/23/2025, 12:06 PM
- [Business Practice Manual for Reliability Requirements Version 78.1 -DAME](#) 07/02/2025, 4:53 PM
- [Appendices Market Operations v62.1 DAME](#) 07/02/2025, 4:32 PM
- [Business Practice Manual Market Operations v101.1 DAME](#) 07/02/2025, 4:32 PM

Extended day-ahead market (EDAM)

- [Extended Day-Ahead Market Business Practice Manual Draft](#) 10/31/2025, 10:34 AM
Extended Day-Ahead Market Business Practice Manual Draft posted for initial review.
- [Business Requirements Specification v1.6 Redline - Extended Day-Ahead Market](#) 01/28/2026, 4:07 PM
- [Business Requirements Specification v1.6 - Extended Day-Ahead Market](#) 01/28/2026, 4:07 PM
- [Business Practice Summary - Extended Day-Ahead Market](#) 07/10/2024, 9:10 AM
- [Market Simulation Structured Scenarios v1.6 Redline - Extended Day-Ahead Market](#) 09/30/2025, 11:41 AM
- [Market Simulation Structured Scenarios v1.6 - Extended Day-Ahead Market](#) 09/30/2025, 11:52 AM
- [Submit Business Requirements Specification Comments - Extended Day-Ahead Market Business Requirements Specification v 1.6](#) 01/29/2026, 1:08 PM
Comments due 2/26/25 at 5 pm
- [Presentation - Settlements Business Practice Manual Walkthrough EDAM Access Charge](#) 08/19/2025, 12:59 PM

ENVIRONMENTS & SUPPORT



Environments

CAISO uses multiple application environments so teams can develop, test, and validate changes without disrupting real-time grid operations.

Color coded bands at the top of ISO UIs let you know the which environment you are working in:

 California ISO		SIEMENS	PROD SIBR 1354:2 3.8.44-202408291203
 California ISO		SIEMENS	STAGING SIBR 1347:2 3.8.44-202408291203
 California ISO		SIEMENS	MAPSTAGE SIBR 177:1 3.8.44-202408291203

Each environment has a distinct purpose

PROD

- Live environment running the actual CAISO grid and markets
- Handles all real submissions, settlements, and telemetry
- Updated only after thorough testing to protect reliability

STAGE

- Full-scale test environment mirroring Production
- Used to validate releases, rule changes, and integrations
- Ensures participant systems work with upcoming updates

MAPSTAGE

- Environment dedicated to Market Participant testing
- Supports connectivity checks and early API/interface validation
- Less strict than Stage but designed to catch issues early

Submitting Questions in Customer Inquiry, Dispute and Information (CIDI) system

CONTACT CUSTOMER SUPPORT
TELL US HOW WE CAN HELP

* SCID

* Functional Environment

☐ Review for Price Correction ☐ Metering Inquiry

☐ Manual Reference Level Change Request ☐ Assistance Energy Designation Request

* Subject

* Description

Trade Date

Trade Hours

Resource ID

Market

☐ Email Recipients - Add up to 5 comma-separated addresses

Submit

- CIDI is the ISO's central platform for submitting questions, issues, and requests.
- Ticket submissions should clearly state the environment (e.g., Prod, Market Simulation).
- Include screenshots, timestamps, and steps taken.
- You must be a Scheduling Coordinator to enter information into CIDI
 - If you are not the SC contact your SC to request to submit on your behalf


WHAT'S NEXT?



This is step 1 in a 3-part SIBR training series

1

Introduction to SIBR –
Basic Concepts

Part 1 

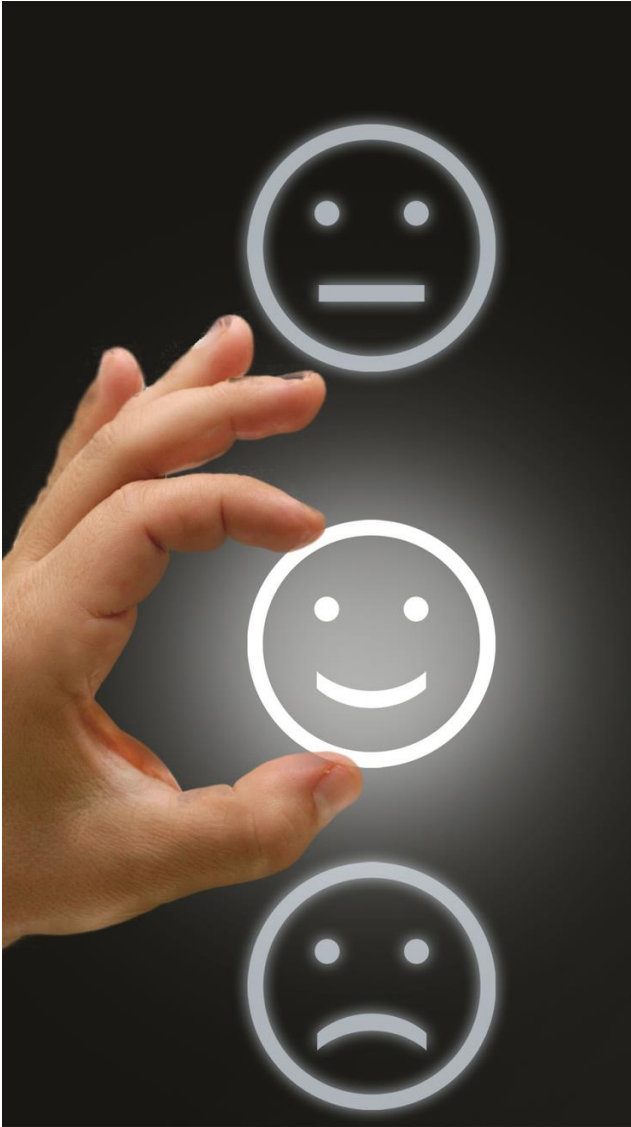
Part 2

2

SIBR Fundamentals –
General Bidding

3

Advance SIBR Bidding
Concepts for EDAM –
Transfer System
Resources



Tell us how we're doing

Takes 3-5 minutes to complete

Helps us improve future training

Link: <https://www.surveymonkey.com/r/caisocoursesurvey>

Thank you for your participation!



For clarification on anything presented in this training, send an email to: CustomerReadiness@caiso.com

For other questions or stakeholder specific questions or concerns use one of these methods:

- Submit a [CIDI ticket](#)
- Contact your Scheduling Coordinator
- Use the “[Contact us](#)” page on caiso.com to submit questions